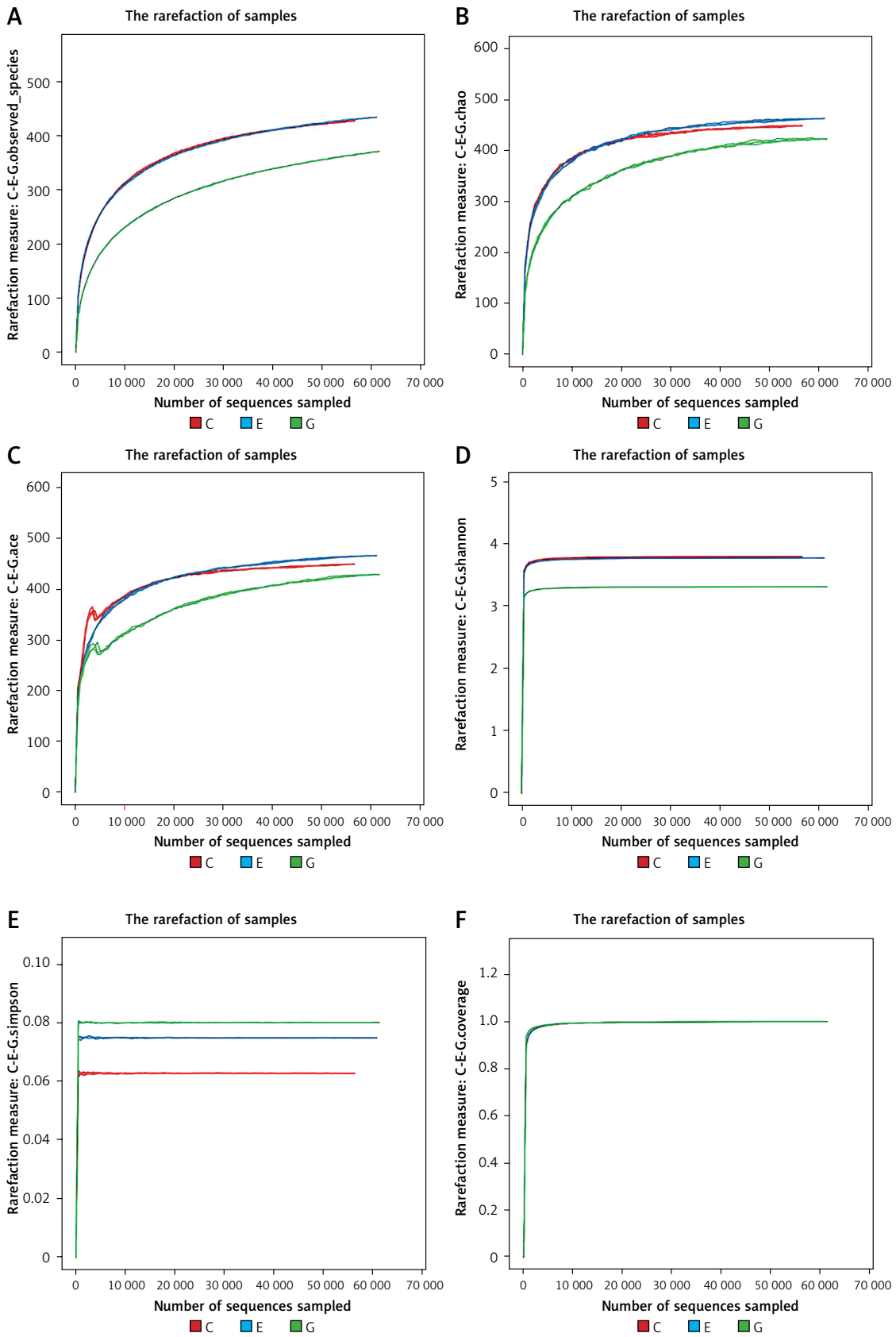


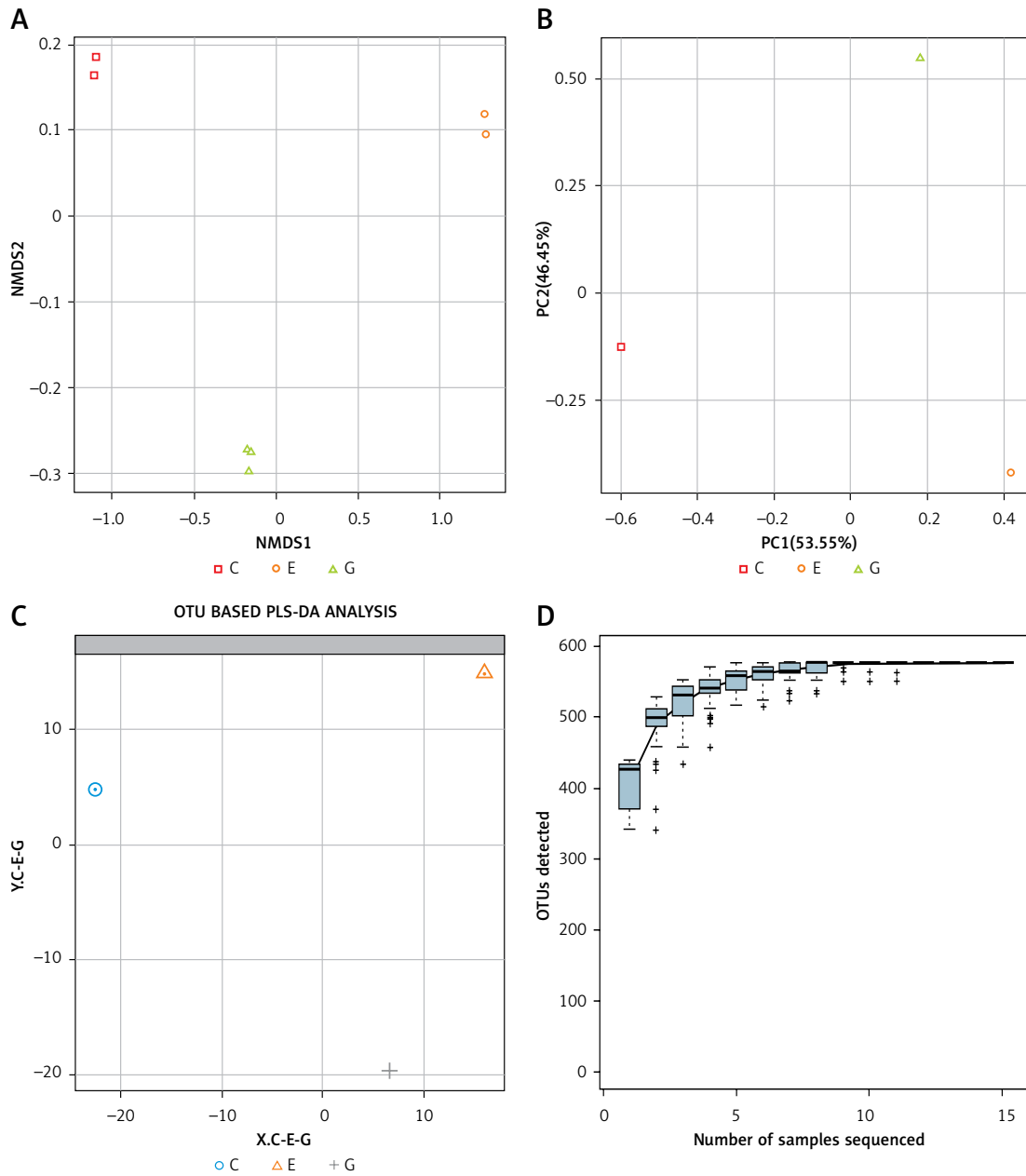
Supplementary Table S1. Demographic and clinical characteristics of participants

Data	Healthy controls (HC)	GBS patients
Number	20	30
Age	37.5 ±8.8	39.1 ±6.7
Gender (M/F)	10/10	19/21
WBC in CSF (10 ⁶ /l)	0.63 ±0.33	0.67 ±0.41
WBC in plasma (10 ⁹ /l)	5.02 ±0.98	6.33 ±1.56
Albumin in CSF (g/l)	0.22 ±0.07	0.714 ±0.16**
Albumin in plasma (g/l)	39.65 ±5.37	40.66 ±5.13

***p* < 0.01 vs. HC.



Supplementary Figure S1. The end of the α curve of species diversity in each group tended to be flat, showing that this sequencing was sufficient to reflect community diversity



Supplementary Figure S2. The diversity within the three groups was similar and there was a significant difference in species diversity among groups.