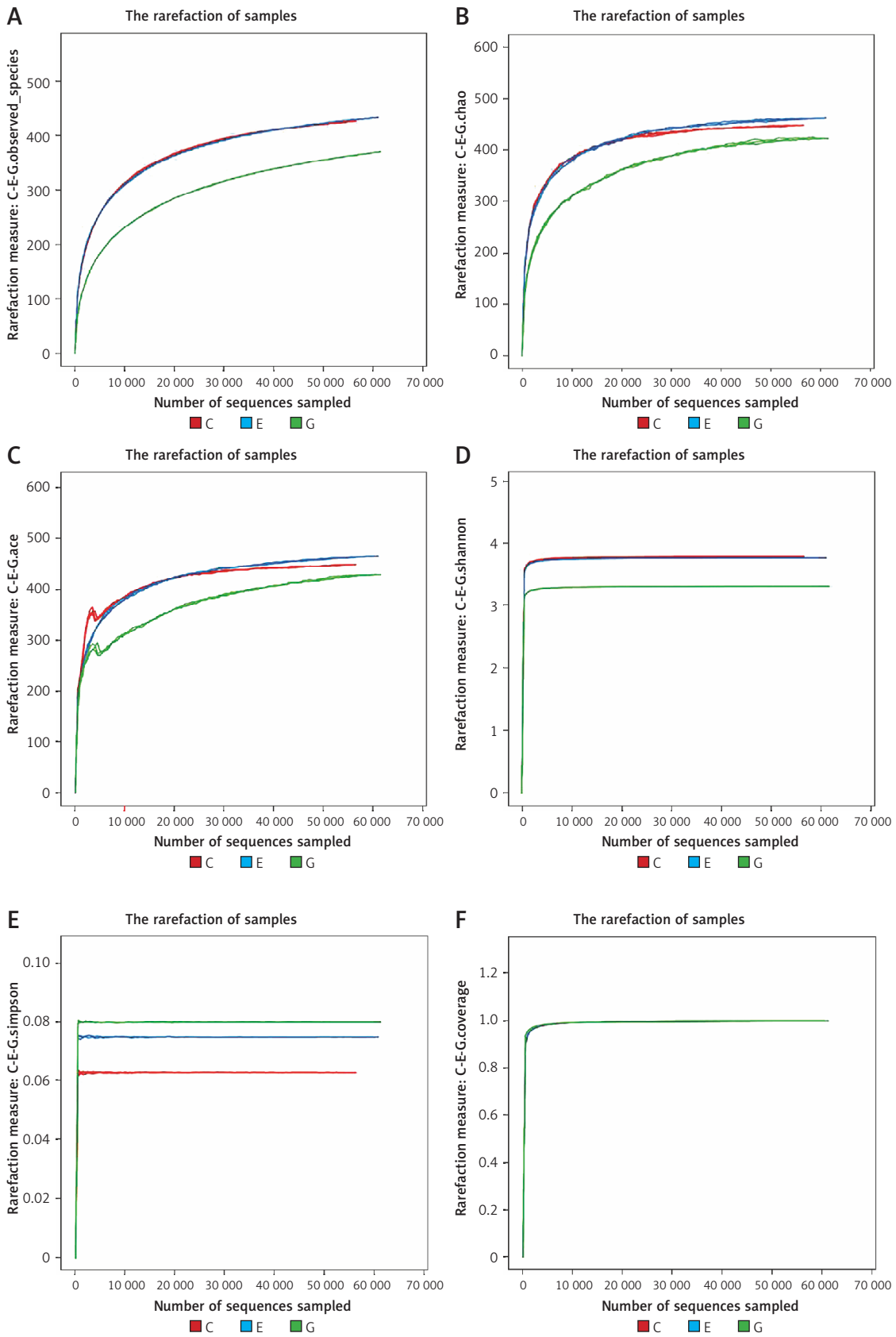


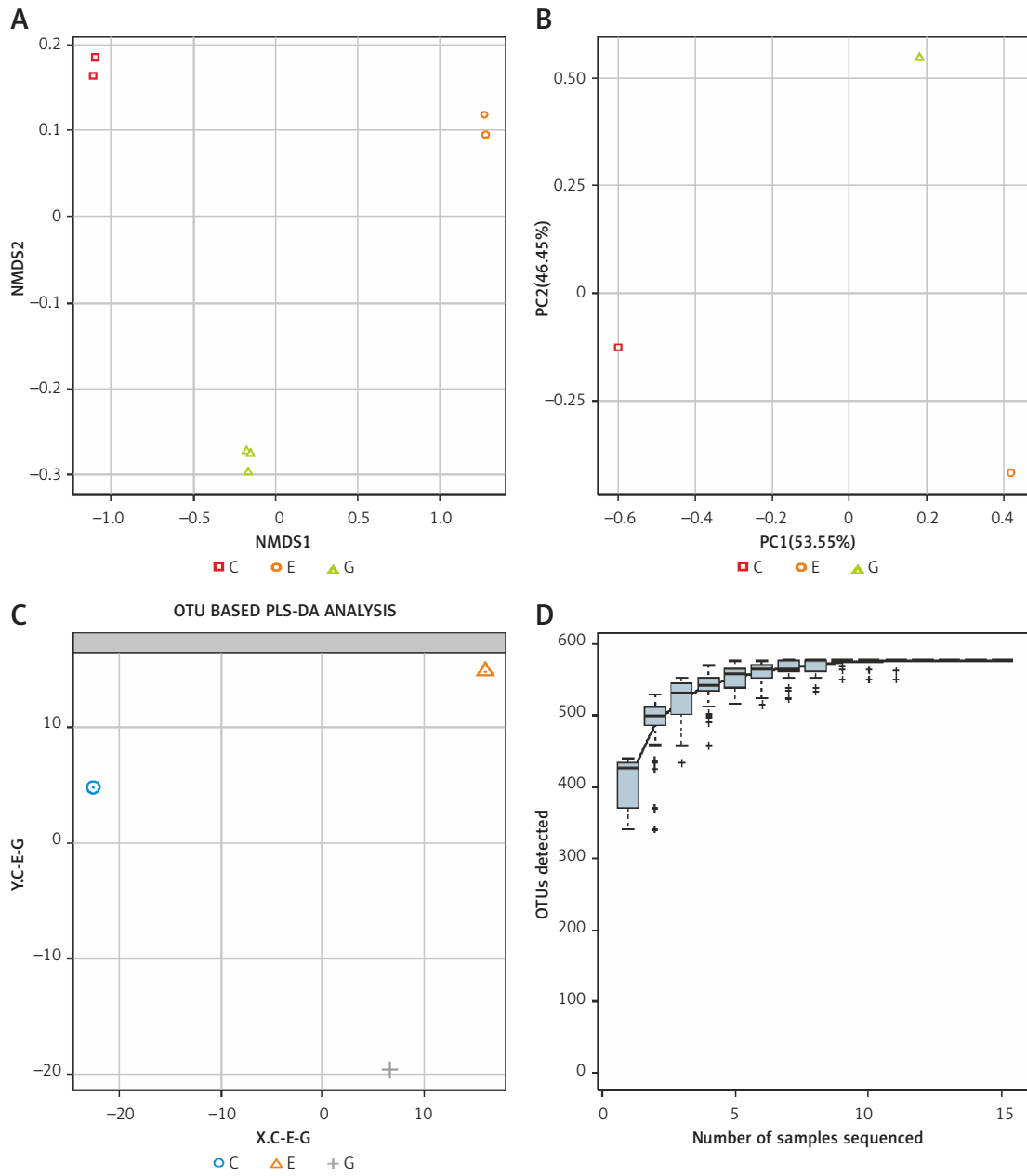
**Supplementary Table S1.** Demographic and clinical characteristics of participants

Data	Healthy controls (HC)	GBS patients
Number	20	30
Age	37.5 ±8.8	39.1 ±6.7
Gender (M/F)	10/10	19/21
WBC in CSF (10 <sup>6</sup> /l)	0.63 ±0.33	0.67 ±0.41
WBC in plasma (10 <sup>9</sup> /l)	5.02 ±0.98	6.33 ±1.56
Albumin in CSF (g/l)	0.22 ±0.07	0.714 ±0.16**
Albumin in plasma (g/l)	39.65 ±5.37	40.66 ±5.13

\*\**p* < 0.01 vs. HC.



**Supplementary Figure S1.** The end of the  $\alpha$  curve of species diversity in each group tended to be flat, showing that this sequencing was sufficient to reflect community diversity



**Supplementary Figure S2.** The diversity within the three groups was similar and there was a significant difference in species diversity among groups.