

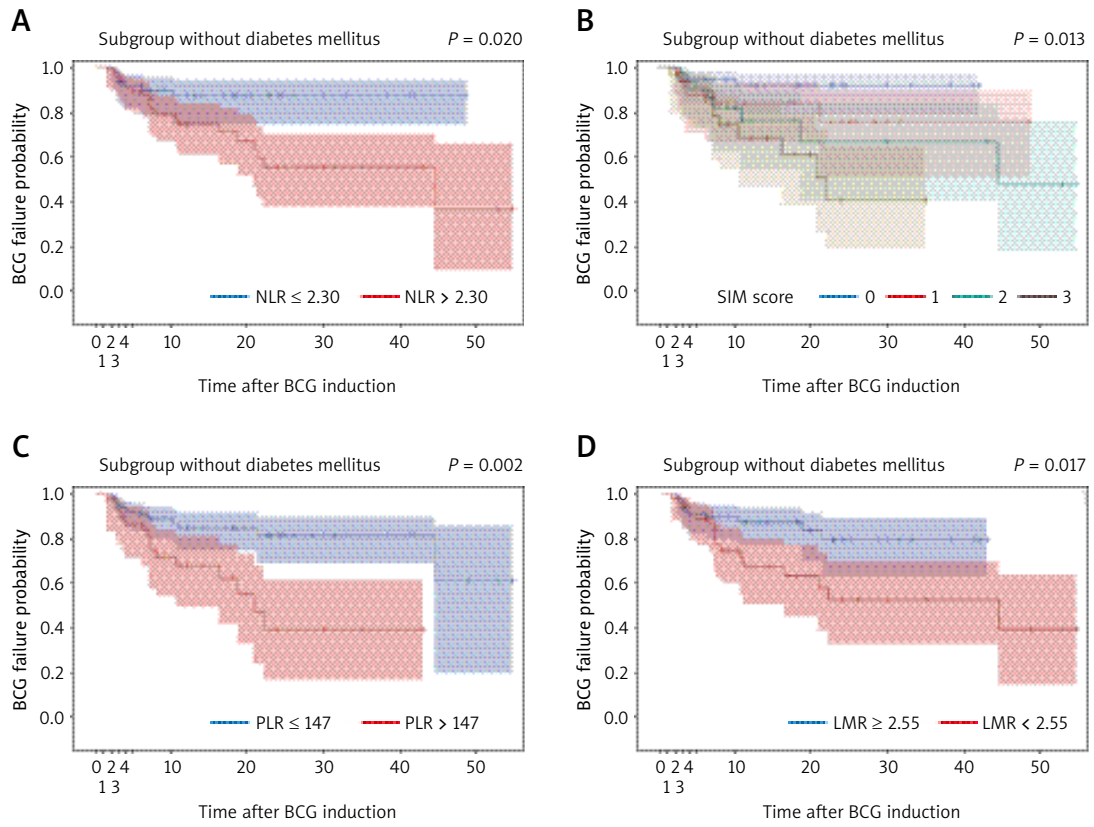
Supplementary Table I. Predictors of BCG failure. Multivariate analysis in the subgroup of patients without diabetes mellitus or metabolic syndrome – logistic regression

Variable	OR (95% CI)	P-value
NLR-based model		
CUETO recurrence risk score	1.20 (1.03–1.41)	0.020
NLR > 2.3	3.23 (1.26–8.30)	0.006
PLR-based model		
CUETO recurrence risk score	1.21 (1.03–1.42)	0.016
PLR > 147	3.57 (1.49–8.56)	0.002
NER-based model		
CUETO recurrence risk score	1.20 (1.03–1.40)	0.009
NER > 0.93	2.96 (1.15–7.62)	0.021
LMR-based model		
CUETO recurrence risk score	1.22 (1.04–1.43)	0.009
LMR < 2.55	2.93 (1.23–6.97)	0.013
SIM score-based model		
CUETO recurrence risk score	1.21 (1.03–1.43)	0.020
SIM score		
1	2.81 (0.71–11.18)	0.007
2	5.12 (1.35–19.41)	
3	6.91 (1.90–25.06)	
0	1	

NLR – neutrophil count/lymphocyte count, NER – neutrophil count* 10⁹/red blood cell count, PLR – platelet count/lymphocyte count, LMR – lymphocyte count/monocyte count, SIM score = NLR + PLR + LMR

Supplementary Table II. Clinicopathologic features based on NLR value

Parameter	Association of clinicopathologic features based on NLR value				P-value
	Number of patients (%) ≤ 2.30	Median (range)	Number of patients (%) > 2.30	Median (range)	
Gender					
Male	64 (79)	–	76 (75)	–	NS
Female	17 (21)	–	26 (25)	–	
Age	–	70 (63–79)	–	72 (64–79)	NS
Tumour category					
T1	51 (63)	–	70 (69)	–	NS
Ta	17 (21)	–	17 (17)	–	
CIS	13 (16)	–	15 (15)	–	
Grade					
Low	7 (9)	–	4 (4)	–	NS
High	74 (91)	–	98 (96)	–	
Concomitant CIS					
No	65 (80)	–	83 (81)	–	NS
Yes	16 (20)	–	19 (19)	–	
Recurrence rate					
Primary	51 (63)	–	76 (75)	–	0.11
Recurrent	30 (37)	–	26 (25)	–	
Multiplicity					
Solitary	59 (73)	–	67 (66)	–	NS
Multiple	22 (27)	–	35 (34)	–	
Size					
< 3 cm	63 (78)	–	71 (70)	–	NS
≥ 3 cm	18 (22)	–	31 (30)	–	
Re-TURBT status					
No re-TURBT	27 (33)	–	39 (38)	–	NS
No tumour	27 (33)	–	25 (25)	–	
Residual tumour	27 (33)	–	38 (37)	–	
Muscle in TURBT					
Yes	65 (80)	–	83 (81)	–	NS
No	16 (20)	–	19 (19)	–	
Diabetes mellitus					
Yes	15 (19)	–	27 (26)	–	NS
No	66 (81)	–	75 (74)	–	
CUETO recurrence risk score	–	6 (4–8)	–	7 (5–9)	NS
CUETO progression risk score	–	8 (8–10)	–	10 (8–10)	0.006
RBC [$10^6/ml$]	–	4.57 (4.06–5.01)	–	4.46 (4.11–4.84)	NS
Haemoglobin [g/l]	–	139 (125–150)	–	135 (122–144)	0.096
Platelet count [$10^3/ml$]	–	220 (184–263)	–	216 (176–260)	NS



Supplementary Figure 1. BCG failure-free survival stratified by NLR – subgroup of patients without diabetes mellitus or metabolic syndrome ($N = 141$)