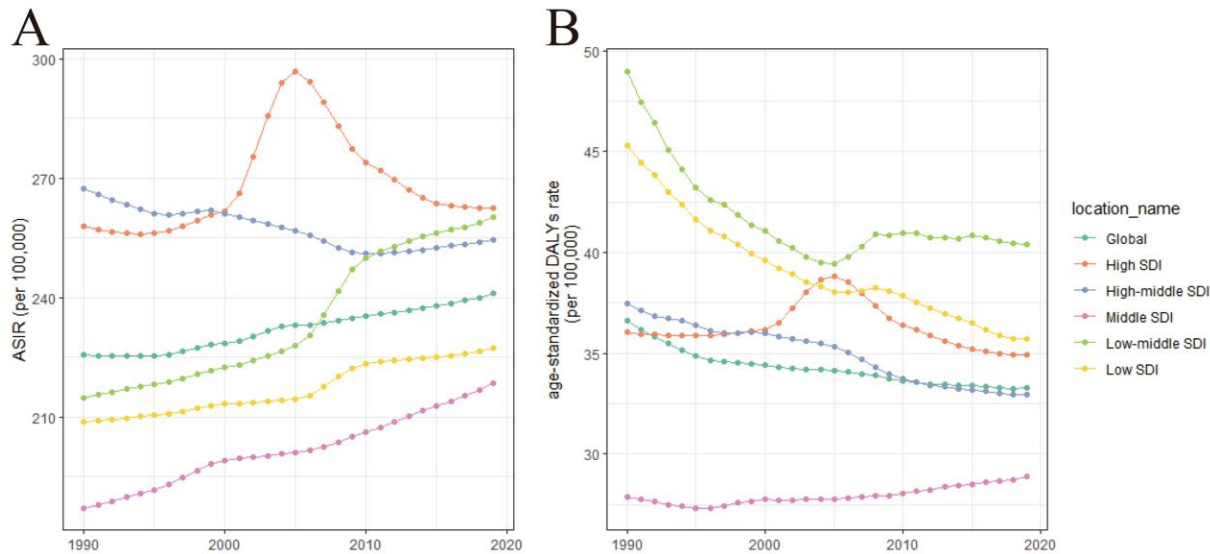
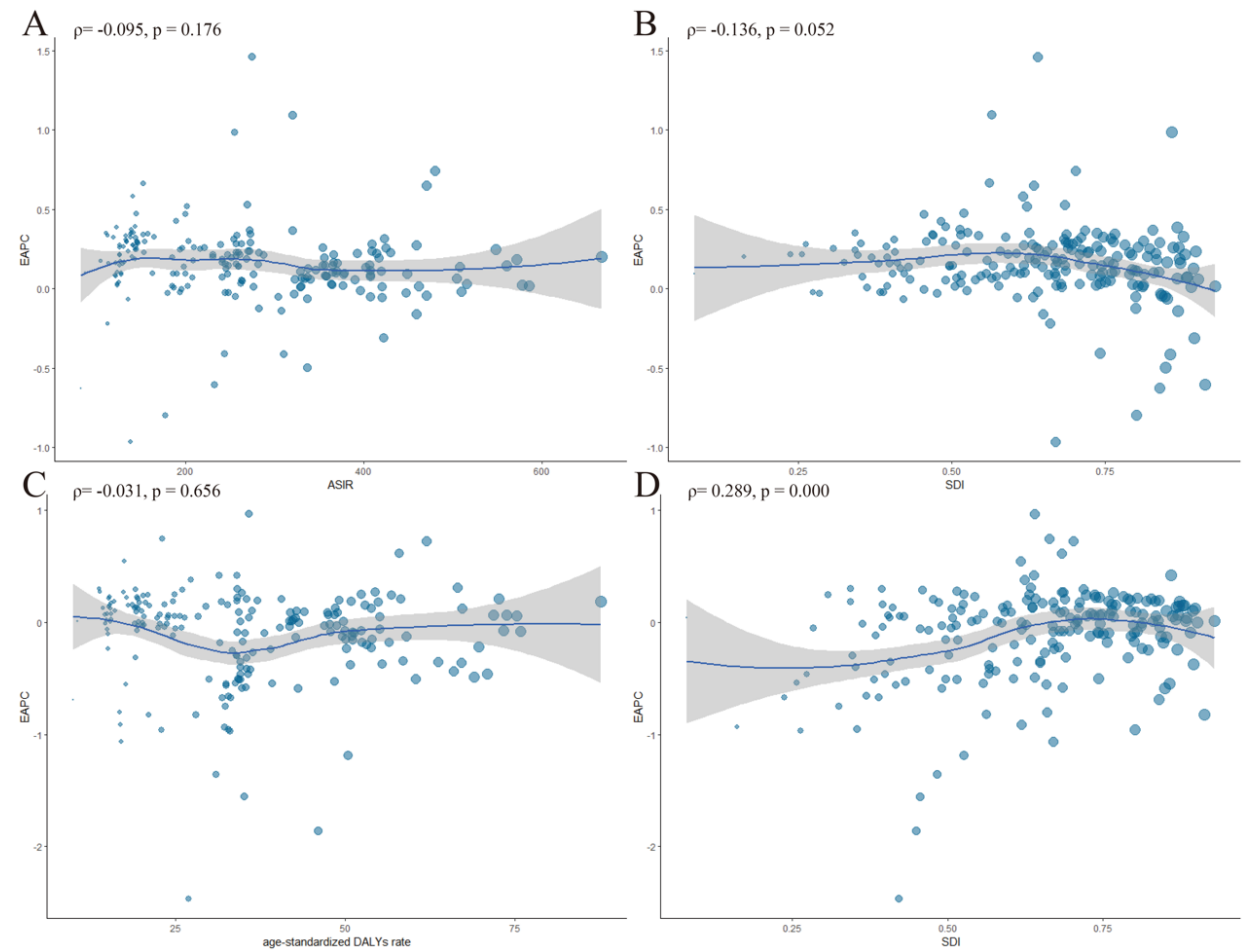


**Supplemental Figure S1.** The change trends of age-standardized uterine fibroids incidence, and DALY rate among different SDI quintiles and gender from 1990 to 2019. **A** – ASIR, age standardized incidence rate. **B** – age-standardized DALY rate  
DALY – disability adjusted life-year.



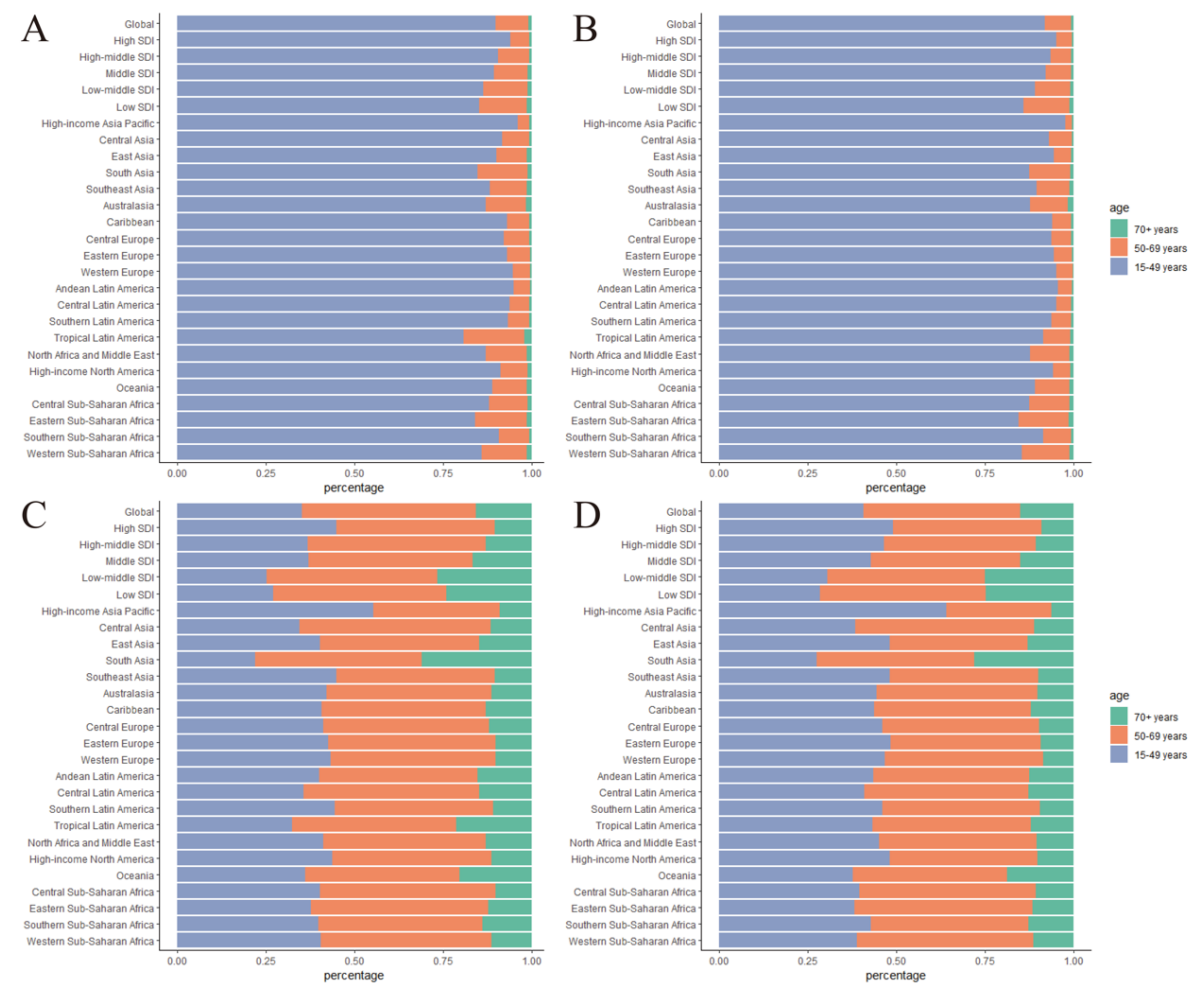
**Supplemental Figure S2.** The correlation between EAPC and uterine fibroids age-standardized rates in 1990 and SDI in 2019. The circles represent countries that were available on SDI data. The size of circle is increased with the cases of uterine fibroids. The  $\rho$  indices Pearson's correlation coefficient and p values were derived from Pearson's correlation analysis. **A** – EAPC and ASIR. **B** – EAPC and SDI in incidence. **C** – EAPC and age-standardized DALY rate. **D** – EAPC and SDI in DALYs

EAPC – estimated annual percentage change, SDI – socio-demographic index, ASIR – age standardized incidence rate, DALY – disability adjusted life-year.

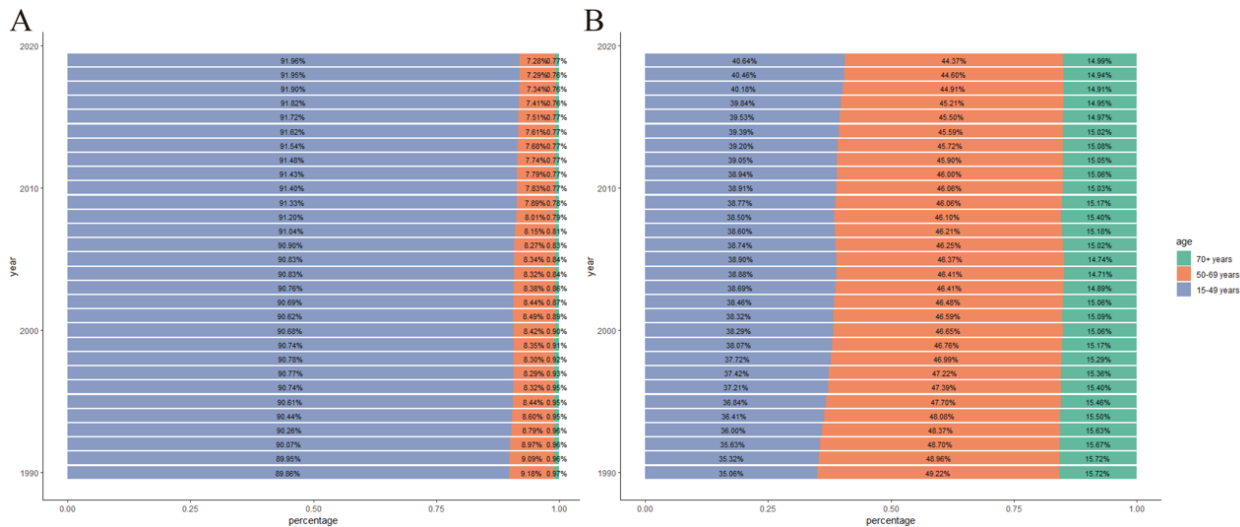


**Supplemental Figure S3.** The incidence and DALY rates of uterine fibroids in different age groups. **A** – incidence in 1990. **B** – incidence in 2019. **C** – DALY rate in 1990. **D** – DALY rate in 2019

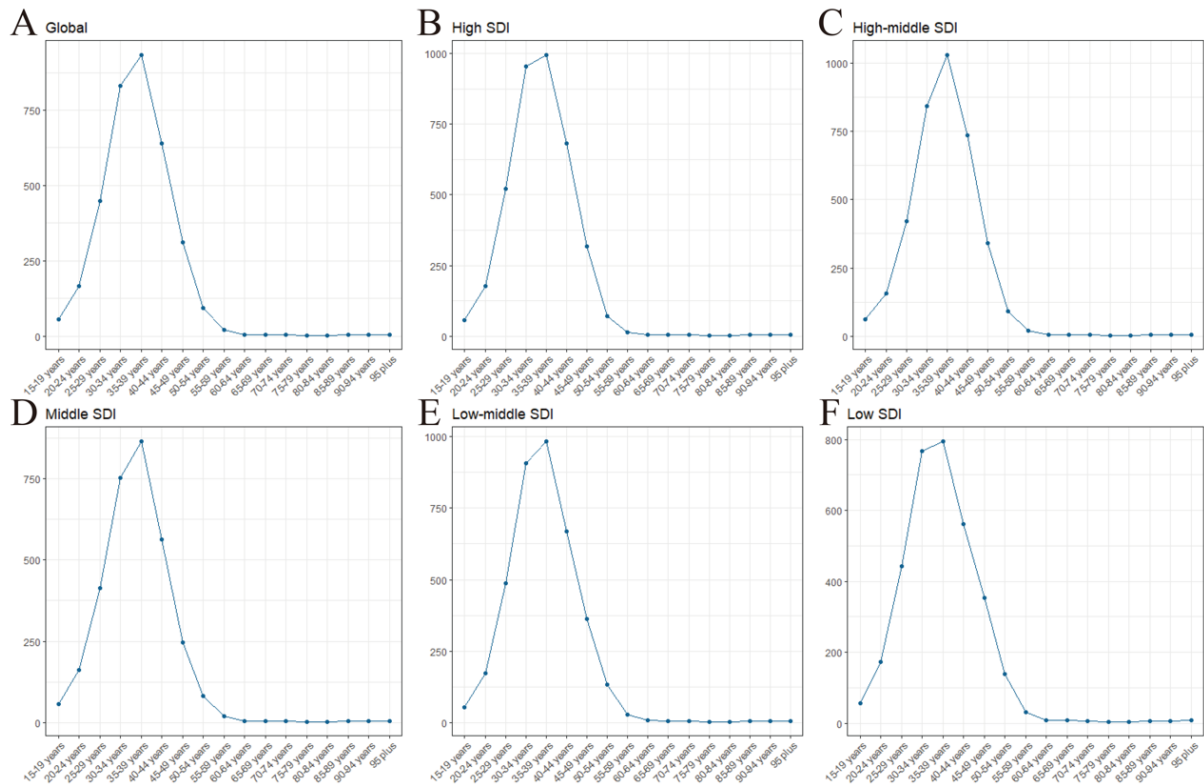
DALY – disability adjusted life-year.



**Supplemental Figure S4.** The proportion of different ages in uterine fibroids incidence (A) and age-standardized DALY (B) by years  
DALY = disability adjusted life-year.



**Supplemental Figure S5.** Distribution of different ages in uterine fibroids incidence in global (A), high SDI (B), high-middle SDI (C), middle SDI (D), middle-low SDI (E), low SDI (F)  
SDI – socio-demographic index.



**Supplemental Figure S6.** Distribution of different ages in uterine fibroids DALYs in global (A), high SDI (B), high-middle SDI (C), middle SDI (D), middle-low SDI (E), low SDI (F) SDI – socio-demographic index.

