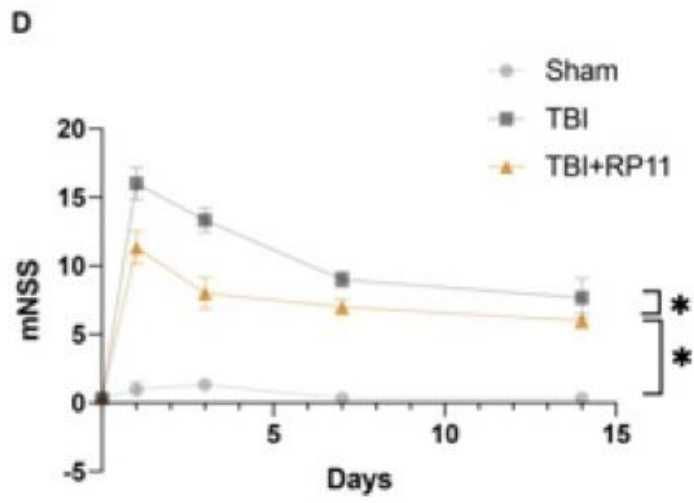
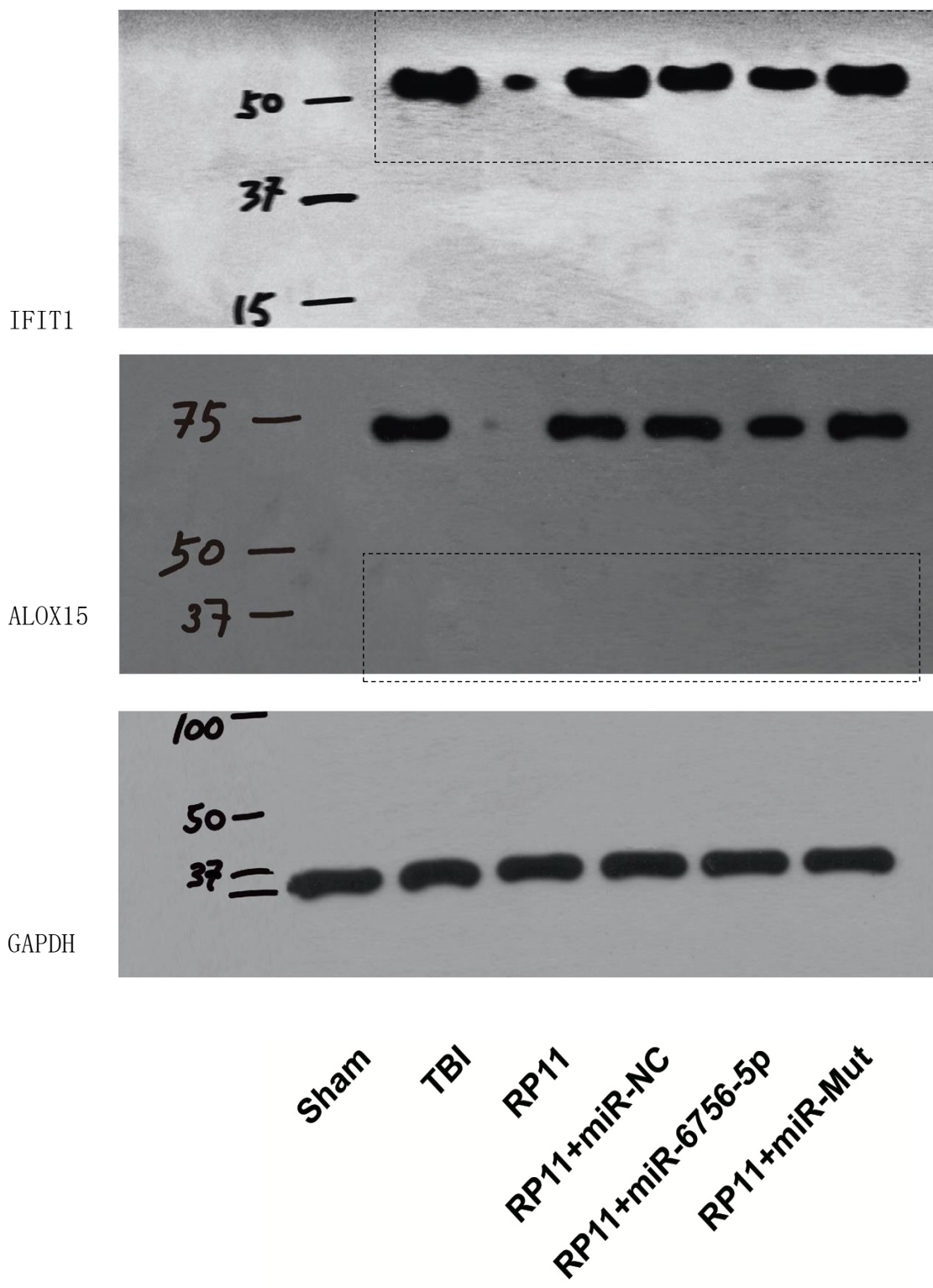




Supplementary Figure S1. The intersected genes between sc-RNA seq data and ceRNA chipset data. Ifit-1 coexpressed lncRNAs (A) and intersected with top 10 changed lncRNAs in TBI (B)



Supplementary Figure S2. RP11-704M14.1 reduces the motor deficits in TBI mice reflected by reduced mNSS



Supplementary Figure S4. Raw gel images for WB: IFIT1, ALOX15, GAPDH

Supplementary Table SI. Clinical characteristics of patients with traumatic brain injury

Patient	Severity	Age (years)	Sex	Brain injury	GCS	GCS (EVM)
1. Mi 1	Mild	48	F	Laceration	14	E3V5M6
2. Mi 2	Mild	28	M	Contusion	15	E4V5M6
3. Mi3	Mild	41	M	SAH	15	E4V5M6
4. Mi4	Mild	47	F	SDH	15	E4V5M6
5. Mo1	Moderate	29	F	Laceration	12	E3V4M5
6. Mo2	Moderate	49	F	SDH	12	E3V3M6
7. Mo3	Moderate	29	M	SAH	12	E3V4M5
8. Mo4	Moderate	50	M	SAH	12	E2V4M6
9. Se1	Severe	23	M	Brain stem injury	3	E1V1M1
10. Se2	Severe	43	F	Contusion	8	E2V2M4
11. Se3	Severe	44	F	SDH	6	E1V1M4
12. Se4	Severe	60	M	SDH	6	E1V1M4
13. Co1	Control	40	M			
14. Co2	Control	46	F			
15. Co3	Control	50	F			
16. Co4	Control	45	M			

SAH – subarachnoid hemorrhage, SDH – subdural hemorrhage.

Supplementary Table SII. Primer sequences for quantitative real-time polymerase chain reaction analysis

Gene	Sequence (5'-3')
Alox15	Up-stream: GACTTGGTGGCTGAGGTCTT
	Down-stream: TCTCTGAGATCAGGTCGCTCCT
Ifit1	Up-stream: TACAGGCTGGAGTGTGCTGAGA
	Down-stream: CTCCACTTTCAGAGCCTTCGCA
ENST00000505646.1	Up-stream: GATACAAAGACTGTATTTTCATCGGCCACAC
	Down-stream: CAGCACATTCTCGCAGGATTCAGGGCTAAA
MALAT1	Up-stream: ACCTCCCAGTTTTGTAAGACG
	Down-stream: CCAATTACCTCCCCTACACAG
U6	Up-stream: CTCGCTTCGGCAGCACA
	Down-stream: AACGCTTACGAATTTGCGT
β -Actin	Up-stream: CATTGCTGACAGGATGCAGAAGG
	Down-stream: TGCTGGAAGGTGGACAGTGAGG