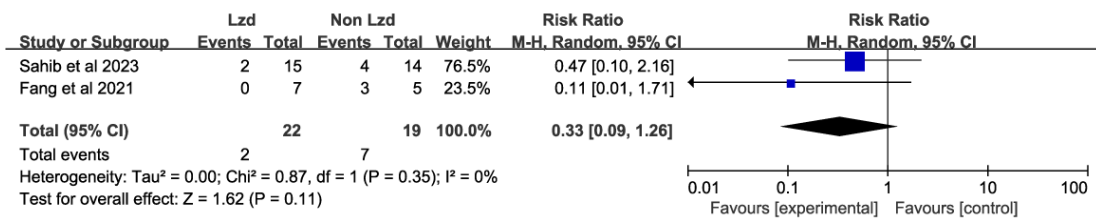


Supplementary Figure S1. Funnel plot assessing publication bias in studies of LZD/NLZD for TBM



Supplementary Figure S2. Forest plot of linezolid vs non-linezolid showing the overall effect on the fatality rate

Supplementary Table SI. Search strategy

Database	Search strategy
Medline	<ol style="list-style-type: none"> 1. „Tuberculosis, Meningeal”[Mesh] 2. TBM ab,ti. 3. Linezolid ab,ti. 4. “Linezolid”[Mesh] 5. 1 OR 2 6. 3 OR 4 7. 5 AND 6
Web of Science	<ol style="list-style-type: none"> 1. TS =(tuberculosis meningitis) OR (TB meningitis) OR TBM OR (Tuberculosis, Meningeal) 2. TI=(Tuberculosis, Meningeal OR tuberculosis meningitis OR TB meningitis OR TBM) OR AB =(Tuberculosis, Meningeal OR tuberculosis meningitis OR TB meningitis OR TBM) OR AK =(Tuberculosis, Meningeal OR tuberculosis meningitis OR TB meningitis OR TBM) 3. TS=(linezolid) OR TI=(linezolid) OR AB=(linezolid) OR AK=(linezolid) 4. 1 OR 2 5. 3 AND 4
Embase	<ol style="list-style-type: none"> 1. “tuberculosis meningitis” [Emtree] 2. TBM ab,kw,ti. 3. “Linezolid”[Emtree] 4. Linezolid ab,kw,ti. 5. 1 OR 2 6. 3 OR 4 7. 5 AND 6
Cochrane Library	<ol style="list-style-type: none"> 1. „Tuberculosis, Meningeal”[Mesh] 2. TBM ab,kw,ti. 3. Linezolid ab,kw,ti. 4. “Linezolid”[Mesh] 5. 1 OR 2 6. 3 OR 4 7. 5 AND 6

Supplementary Table SII. The Jadad scale for reporting randomized controlled trials

Item	Maximum points	Description	Examples
Randomization	2	1 point if randomization is mentioned	“The patients were randomly assigned to two groups”
		1 additional point if the method of randomization is appropriate	The randomization was accomplished using a computer generated random number list, coin toss or well-shuffled envelopes
		Deduct 1 point if the method of randomization is inappropriate (minimum 0)	The group assignment was accomplished by alternate assignment, by birthday, hospital number or day of the week
Blinding	2	1 point if blinding is mentioned	“The trial was conducted in a double-blind fashion”
		1 additional point if the method of blinding is appropriate	Use of identical tablets or injectables, identical vials Use of tablets with similar looks but different taste
		Deduct 1 point if the method of blinding is inappropriate (minimum 0)	Incomplete masking
An account of all patients	1	The fate of all patients in the trial is known. If there are no data the reason is stated	“There were 40 patients randomized but the data from 1 patient in the treatment group and 2 in the control were eliminated because of a break in the protocol”

Supplementary Table SIII. The Newcastle-Ottawa quality assessment scale of cohort studies.

Study	Selection			Comparability			Assessment of outcome			Total
	Representativeness of the exposed cohort	Selection of the non-exposed cohort	Ascertainment of exposure	Outcome not present at start of study	Study controls for the most important factor, DST	Studies controlling for the other main factor, age	Assessment of outcome with independence	Adequacy of follow-up length	Lost to follow-up acceptable (less than 20%)	
Fang 2021	*	*	*	*	*	*	*	*	*	8
Li 2016	*	*	*	*	*	*	*	*	*	9
Sun 2014	*	*	*	*	*	*	*	*	*	9

*This literature meets the corresponding conditions.

Supplementary Table SIV. Characteristics of the included studies

References	Country	Year	Participates	Males	HIV	Cortico-steroids	Linezolid regimen	Linezolid dose	Duration [months]	Background regimen	Outcome measurement
Fang <i>et al.</i>	China	2021	12	11	2	ALL	HCycZAmPthLzd	1200 mg/day	3-10	HRZEAmPthCycLfx	Survival
Li <i>et al.</i>	China	2016	86	51	0	ALL	HRZ/HRZE + LZD	10 mg/kg/8 h (0-12 years old); 600 mg/12 h (for over 12 years old)	2.8	2-4HRZ/10HR 2-4HRZE/10HR	Survival; Temperature recovery; Adverse events
Sun <i>et al.</i>	China	2014	33	16	NR	ALL	HRZELZD	1200 mg/day	1	HRZE	Survival; Temperature recovery; Adverse events
Sahib <i>et al.</i>	India	2023	29	14	NR	ALL	HRZE/S + LZD	600 mg/day	3	HRZE/S	Survival; Temperature recovery; Adverse events