

Supplementary Table SI. Datasets used for analysis

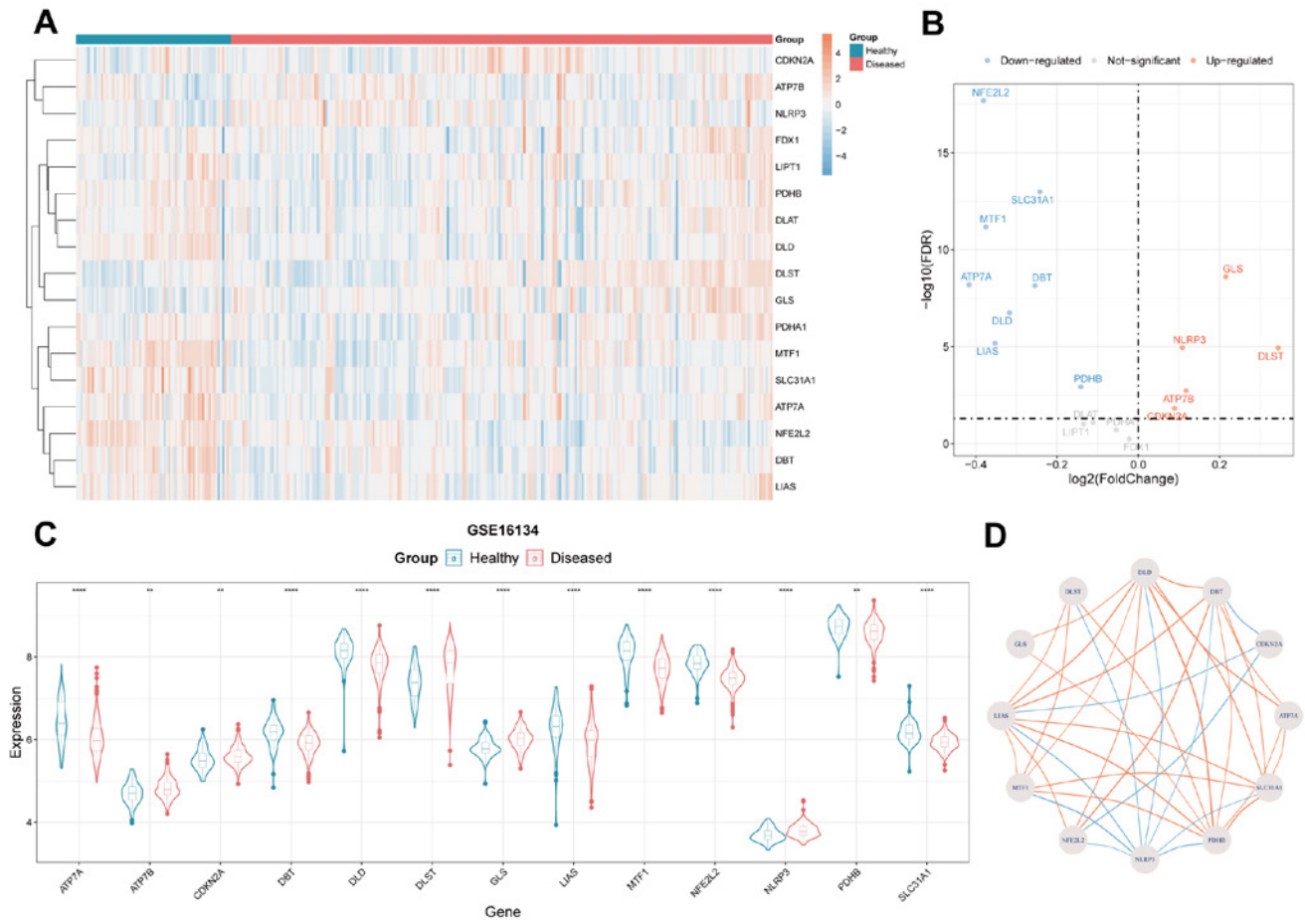
Datasets	Platform	Analysis	Case (sample/cell)	Control (sample/cell)	Total
GSE16134	GPL570	mRNA	241	69	310
GSE10334	GPL570	mRNA	183	64	247
GSE54710	GPL15159	miRNA	159	41	200
GSE171213	GPL24676	scRNA	19799	14434	34233

Supplementary Table SII. Primers used in real-time PCR assays

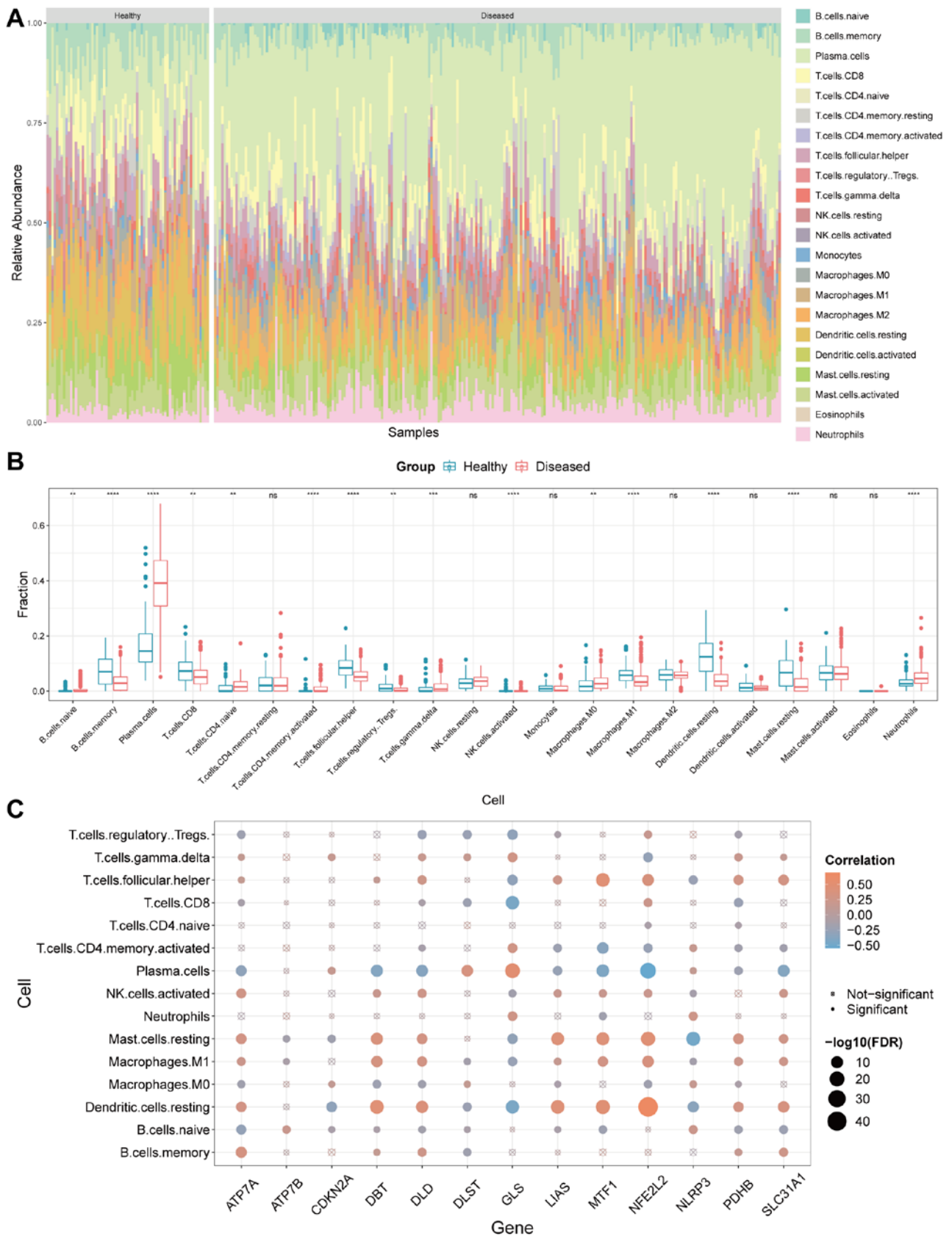
Name	Primer (5' to 3')
MTF1-MOUSE-F MTF1-MOUSE-R	GGCTGTGAGAAGGCGTTCAACA ATGTGCTCCGCAGTCACTGA
SLC31A1-MOUSE-F SLC31A1-MOUSE-R	GACAACATTACCATGCCACCTCACCA GTAAAAACACTGCCACACGAAGGCTCCA
NFE2L2-MOUSE-F NFE2L2-MOUSE-R	AGCACATCCAGACAGACACCA TATCCAGGGCAAGCGACTC
DLST-MOUSE-F DLST-MOUSE-R	GGTAGCGTCTTCAGGGTTTCG GAGGGCACTGGTGCCATCT
DBT-MOUSE-F DBT-MOUSE-R	CAGGCAAAGACCGAACAGA GGAGGCATTGAGGATAGGAA

Supplementary Table SIII. Cuproptosis-related genes

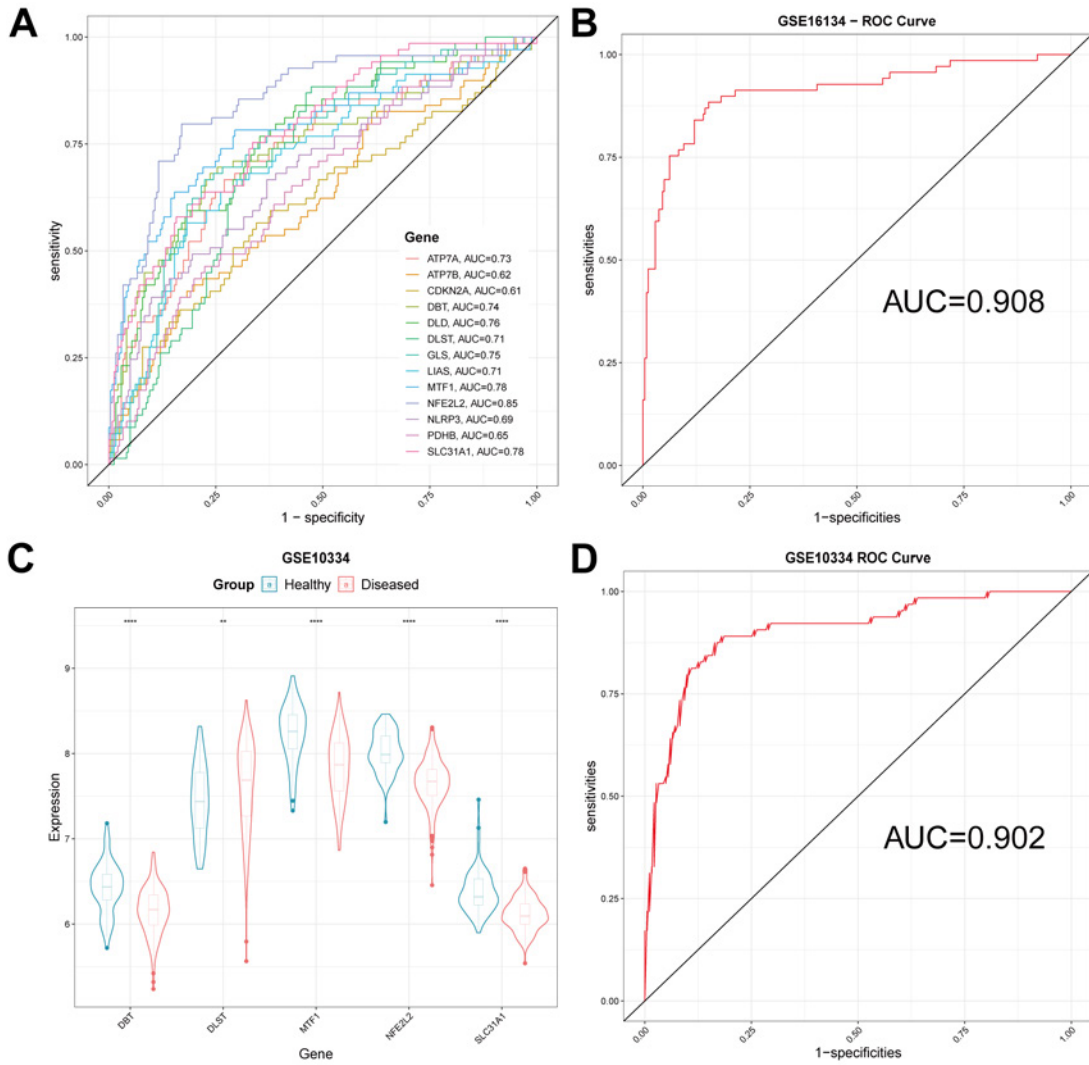
1	ATP7B
2	ATP7A
3	FDX1
4	LIAS
5	LIPT1
6	DLD
7	PDHA1
8	PDHB
9	MTF1
10	GLS
11	DBT
12	CDKN2A
13	DLST
14	NLRP3
15	SLC31A1
16	NFE2L2
17	DLAT



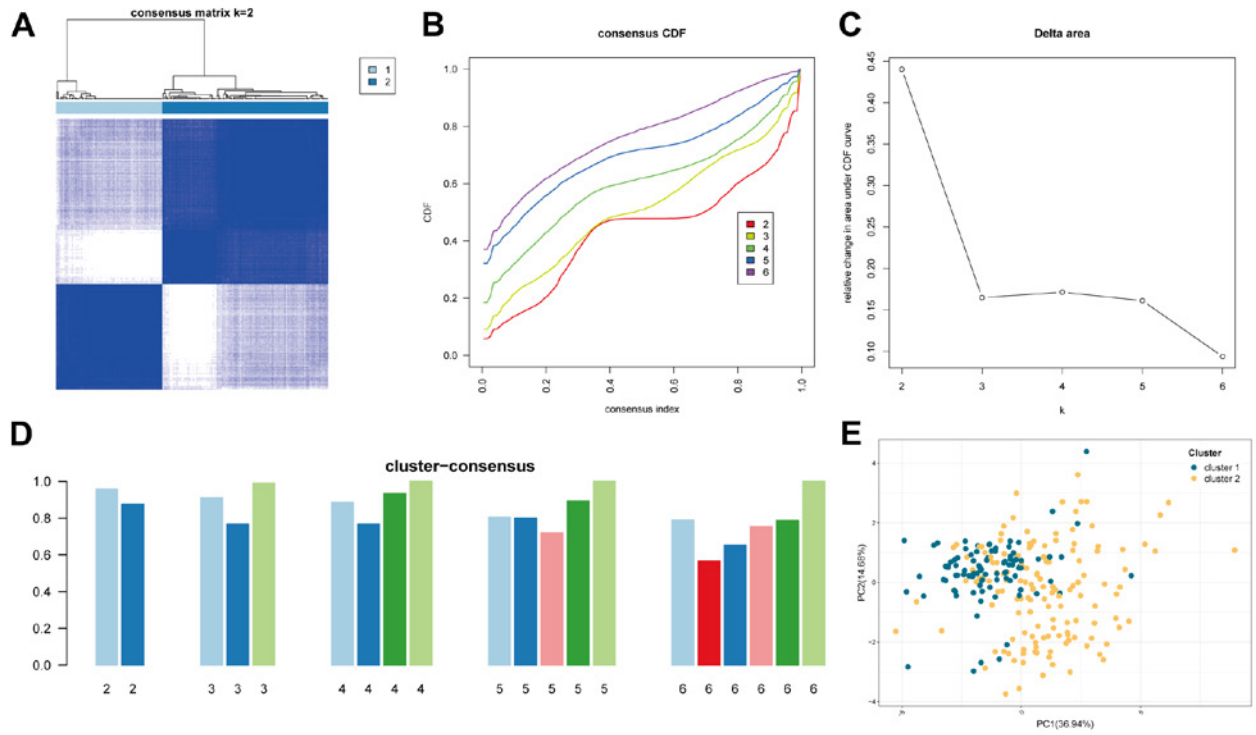
Supplementary Figure S1. The analysis of cuproptosis-related genes expression in periodontitis



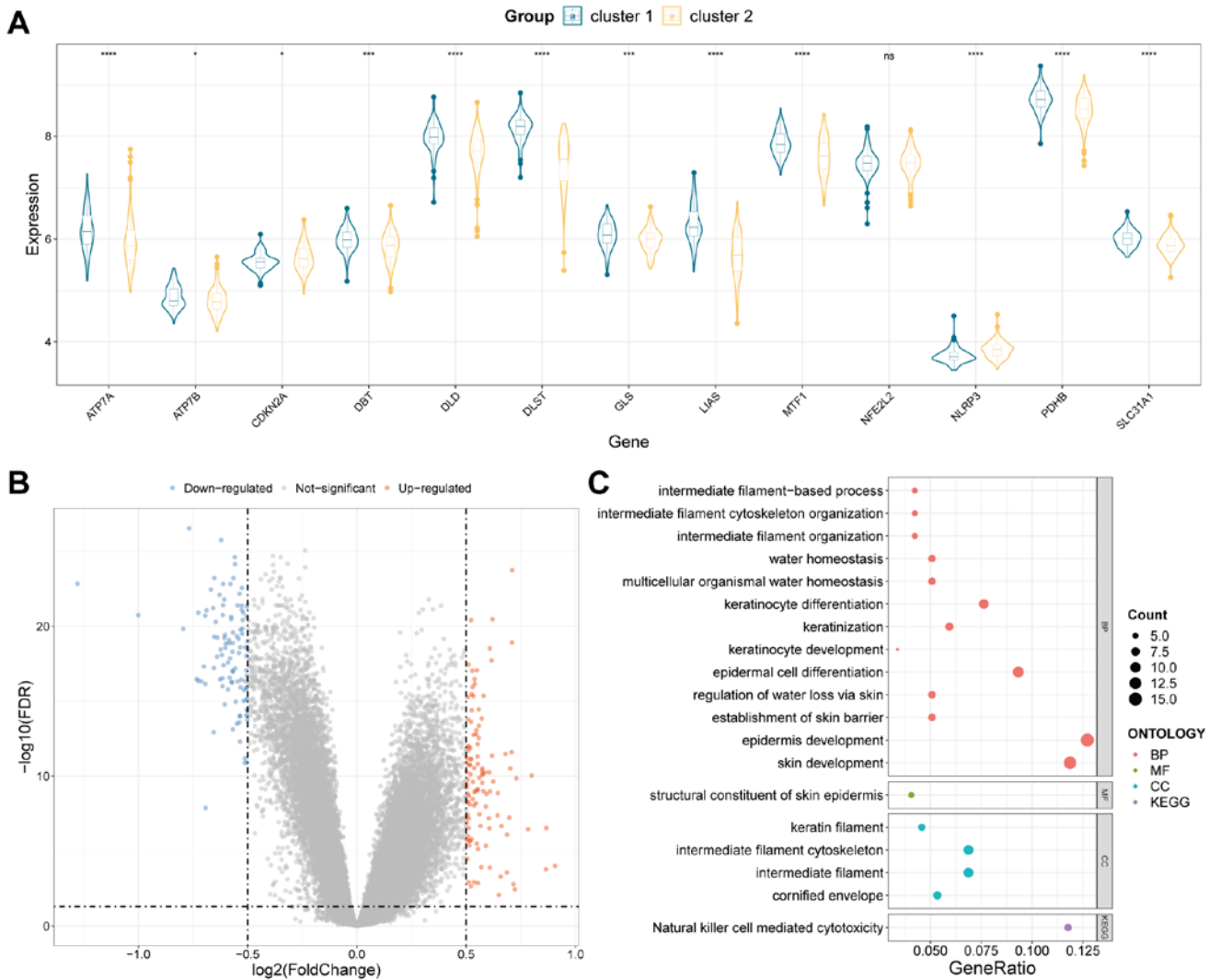
Supplementary Figure S2. Infiltration of 22 immune cells in periodontitis and normal tissues



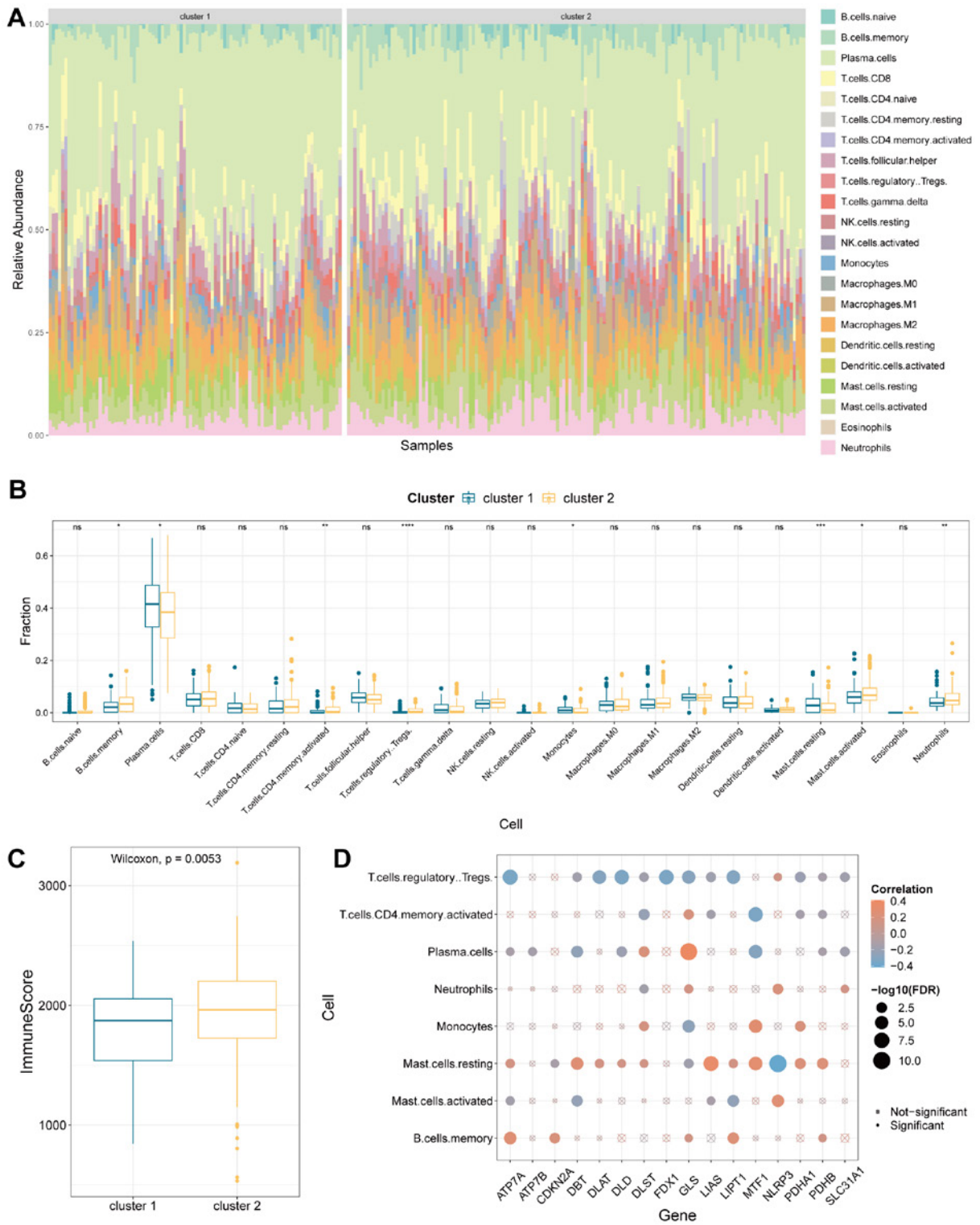
Supplementary Figure S3. Analysis of the diagnostic abilities of the CRGs



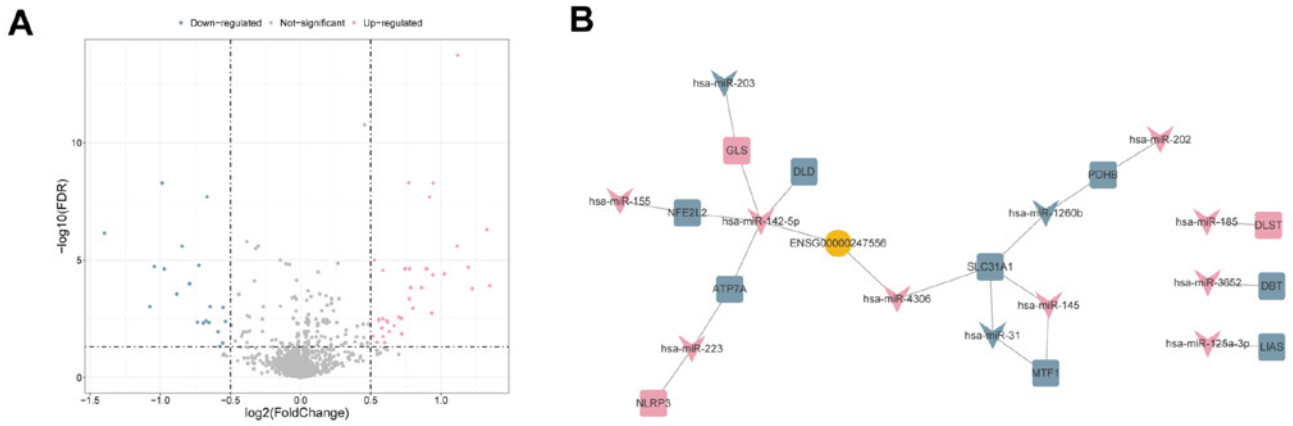
Supplementary Figure S4. Identification of cuproptosis-related molecular subtypes



Supplementary Figure S5. Cluster-specific genes detection and analysis



Supplementary Figure S6. The characteristics of immune of cuproptosis-related subtypes



Supplementary Figure S7. ceRNA network construction and validation of the key genes