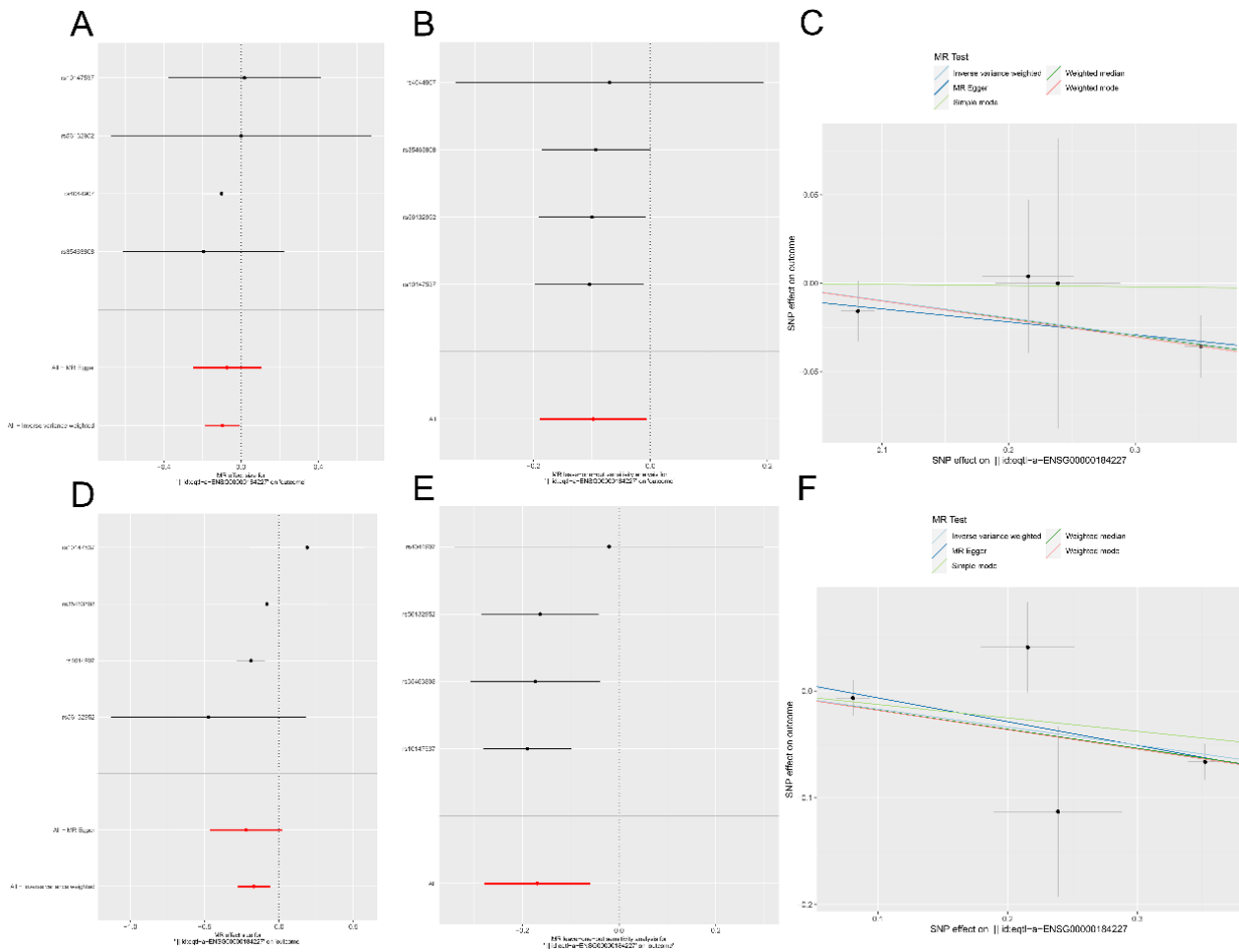
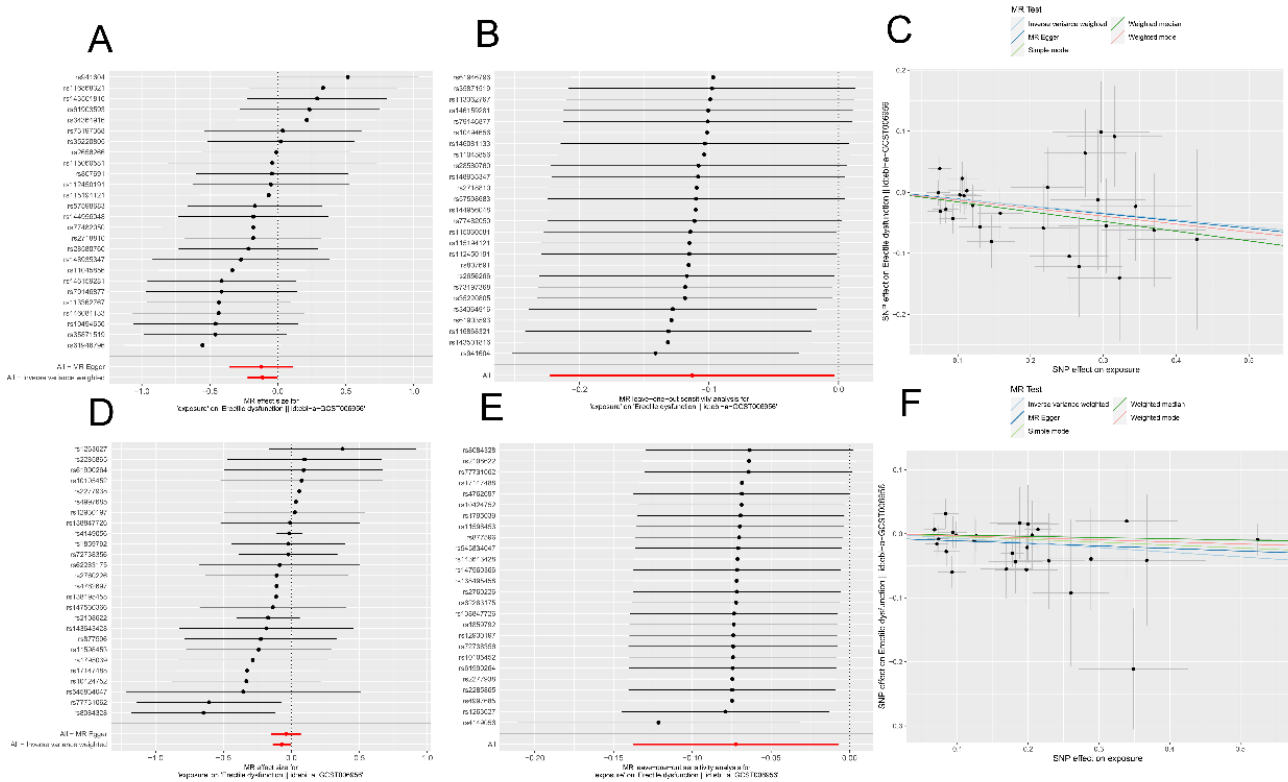


Supplementary Figure S1. Forest plot, scatter plot, and leave-one-out analysis of the results with ACOT1 eQTL as the exposure and ED as the outcome employing MR analysis. **A** – Forest plot; **B** – Leave-one-out analysis; **C** – Scatter plot



Supplementary Figure S2. Forest plots, scatter plots, and leave-one-out analyses of the results with ACOT1 eQTL as the exposure and metabolites docosadioate (C22-DC) and octadecanedioylcarnitine (C18-DC) as the outcome utilizing MR analysis. **A** – Forest plot for the causal associations between ACOT1 eQTL and docosadioate (C22-DC); **B** – Leave-one-out analysis for the causal associations between ACOT1 eQTL and docosadioate (C22-DC); **C** – Scatter plot for the causal associations between ACOT1 eQTL and docosadioate (C22-DC); **D** – Forest plot for the causal associations between ACOT1 eQTL and octadecanedioylcarnitine (C18-DC); **E** – Leave-one-out analysis for the causal associations between ACOT1 eQTL and octadecanedioylcarnitine (C18-DC); **F** – Scatter plot for the causal associations between ACOT1 eQTL and octadecanedioylcarnitine (C18-DC)



Supplementary Figure S3. Forest plots, scatter plots, and leave-one-out analyses of the results with metabolites docosadioate (C22-DC) and octadecanedioylcarnitine (C18-DC) as the exposure and ED as the outcome employing using MR analysis. **A** – Forest plot for the causal associations between docosadioate (C22-DC) and ED; **B** – Leave-one-out analysis for the causal associations between docosadioate (C22-DC) and ED; **C** – Scatter plot for the causal associations between docosadioate (C22-DC) and ED; **D** – Forest plot for the causal associations between octadecanedioylcarnitine (C18-DC) and ED; **E** – Leave-one-out analysis for the causal associations between octadecanedioylcarnitine (C18-DC) and ED; **F** – Scatter plot for the causal associations between octadecanedioylcarnitine (C18-DC) and ED