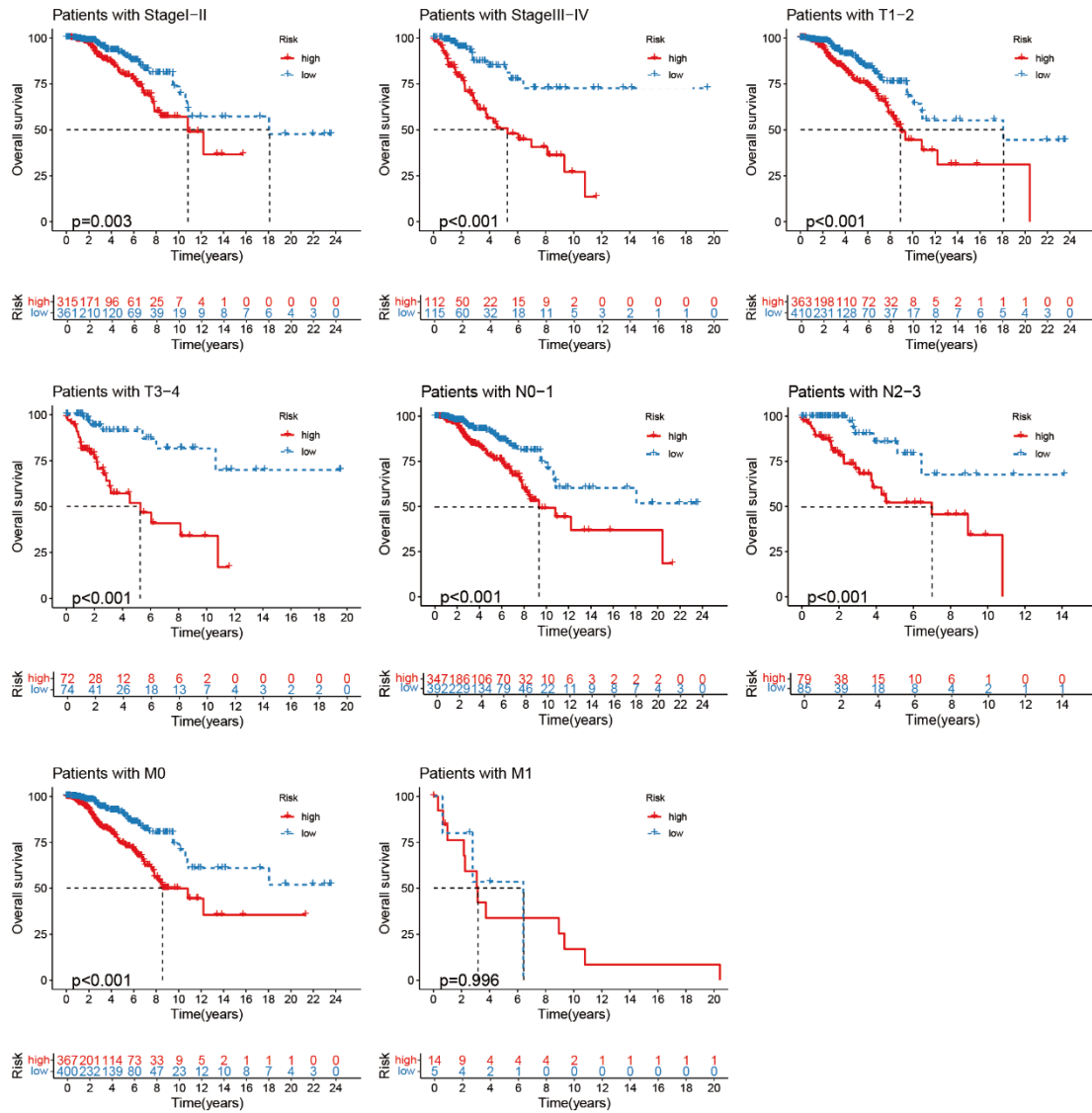


Supplementary Figure S 1. The flow chart of the study design



Supplementary Figure S2. K-M curves of overall survival for various clinicopathologic factors

Supplementary Table SI. Comparison of the predictive performance of different prognostic models

Article	Year	Model Characteristics	Model Gene	AUC	C-index
Our model	2024	disulfidptosis-related lncRNA in BRCA	<i>AC007996.1, AC004816.2, MIR200CHG, and AL354920.1</i>	0.714 (1-year), 0.655 (3-year), 0.641 (5-year)	0.70
Jingsong Wang et al	2024	disulfidptosis-related lncRNA in BRCA	<i>AP003419.3, AL161891.1, AC234917.3, LINC00536, AL021707.6, AL445649.1, AC104785.1</i>	0.64 (1-year), 0.68 (3-year), 0.70 (5-year)	0.63
Yifan Zheng et al	2024	disulfidptosis-related lncRNA in BRCA	<i>LINC01589, LINC01087, AL137847.1, ELOVL2-AS1, AL137856.1, LINC01948, AP003031.1, AP001922.3, MAPT-IT1, AC004967.2</i>	0.74 (1-year), 0.72 (3-year), 0.68 (5-year)	0.67
Xi Chen et al	2024	Disulfidptosis-related lncRNAs in BRCA	<i>YTHDF3-AS1, AC002398.1, AL451085.2, AC092718.4, AC097662.1, AC053503.5</i>	0.66 (1-year), 0.70(3-year), 0.68 (5-year)	
Shuyan Liu1 et al	2023	disulfidptosis-related genes in BRCA	<i>AC009097.2, AC133552.5, YTHDF3-AS1, AC084824.5</i>	0.72 (1-year), 0.69 (3-year), 0.69 (5-year)	0.64
Jie Wu et al	2024	disulfidptosis-related genes in TNBC	<i>HLA-DQA2, CCL13, GBP1, LAMP3, SLC7A11</i>	0.79 (1-year), 0.74 (3-year), 0.71 (5-year)	

Supplementary Table SII. Drug sensitivity results

drug	IC50 vaule	low-risk group	high-risk group	p value
JAK1_8709	IC50 mean vaule	5.914	6.139	4.90E-07
	Lower 95%IC of mean	5.853	6.066	
	Upper 95%IC of mean	5.975	6.212	
KRAS (G12C)	IC50 mean vaule	6.186	6.566	1.40E-07
	Lower 95%IC of mean	6.093	6.468	
	Upper 95%IC of mean	6.28	6.664	
Buparlisib	IC50 mean vaule	1.839	1.979	9.10E-05
	Lower 95%IC of mean	1.792	1.925	
	Upper 95%IC of mean	1.887	2.032	
Wee1 Inhibitor	IC50 mean vaule	3.131	3.266	7.20E-04
	Lower 95%IC of mean	3.043	3.17	
	Upper 95%IC of mean	3.219	3.361	
Leflunomide	IC50 mean vaule	7.123	7.31	1.40E-07
	Lower 95%IC of mean	7.069	7.247	
	Upper 95%IC of mean	7.177	7.372	
Afuresertib	IC50 mean vaule	3.663	3.91	8.70E-05
	Lower 95%IC of mean	3.562	3.802	
	Upper 95%IC of mean	3.763	4.019	
CDK9_5576	IC50 mean vaule	0.8014	0.9938	1.40E-05
	Lower 95%IC of mean	0.754	0.9186	
	Upper 95%IC of mean	0.8488	1.069	
Oxaliplatin	IC50 mean vaule	5.221	5.654	3.40E-10
	Lower 95%IC of mean	5.128	5.547	
	Upper 95%IC of mean	5.314	5.762	