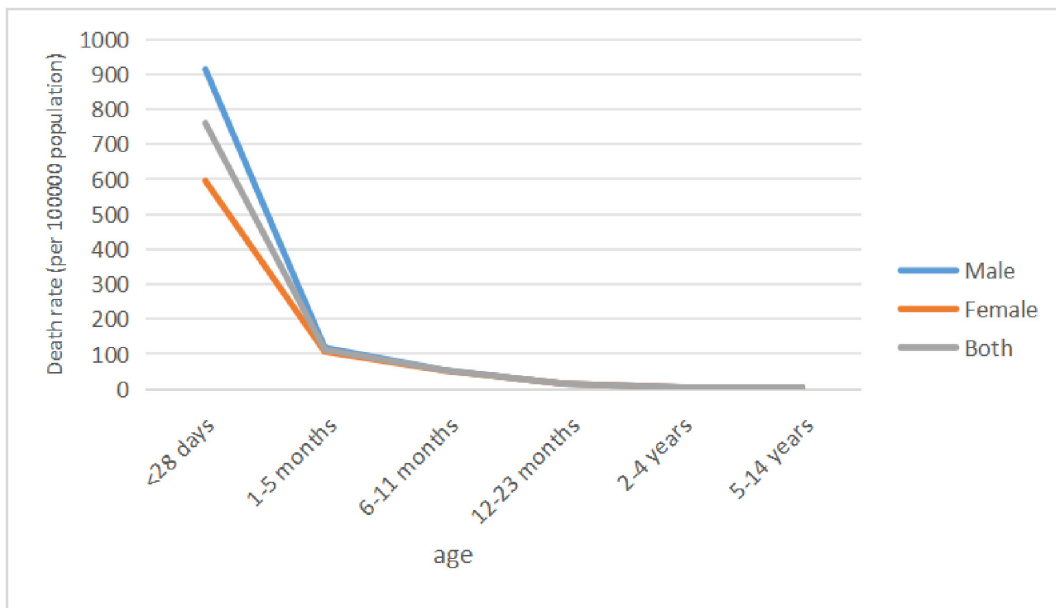
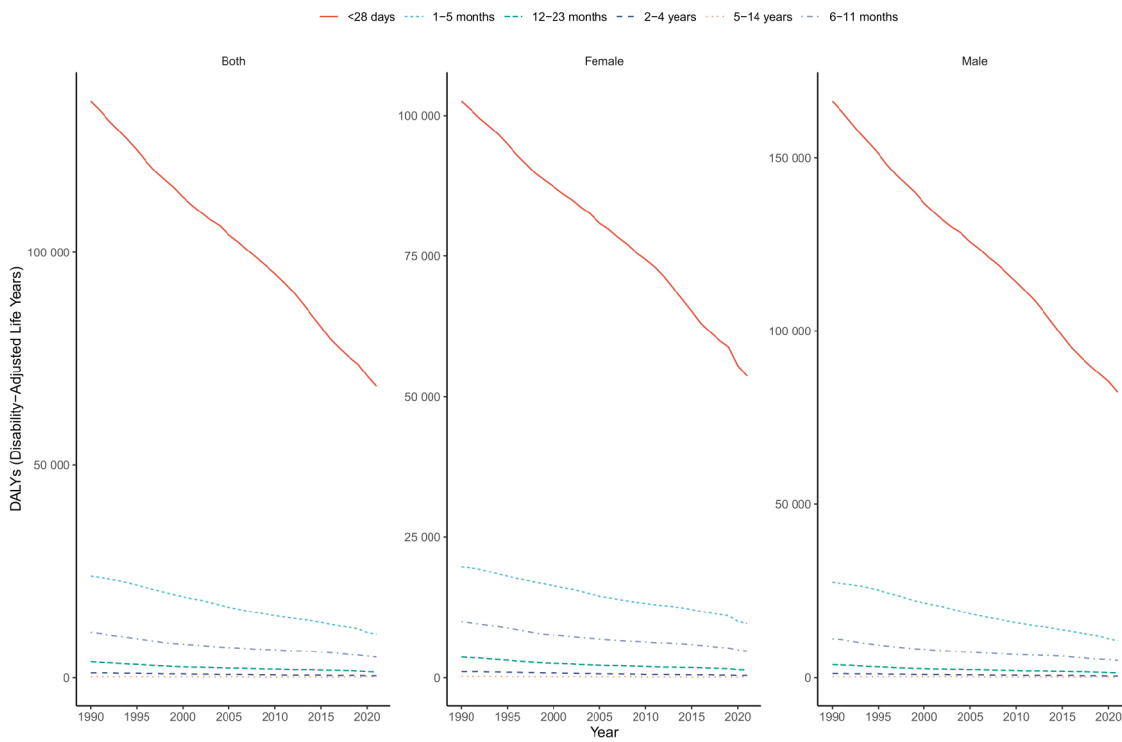
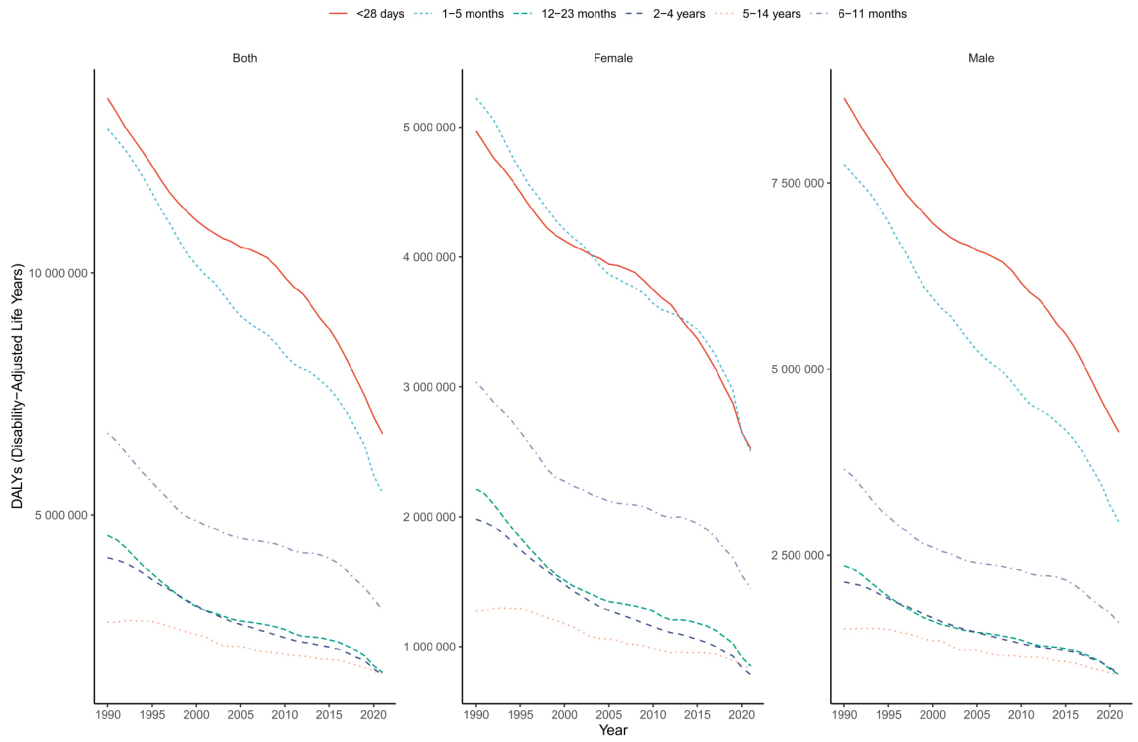


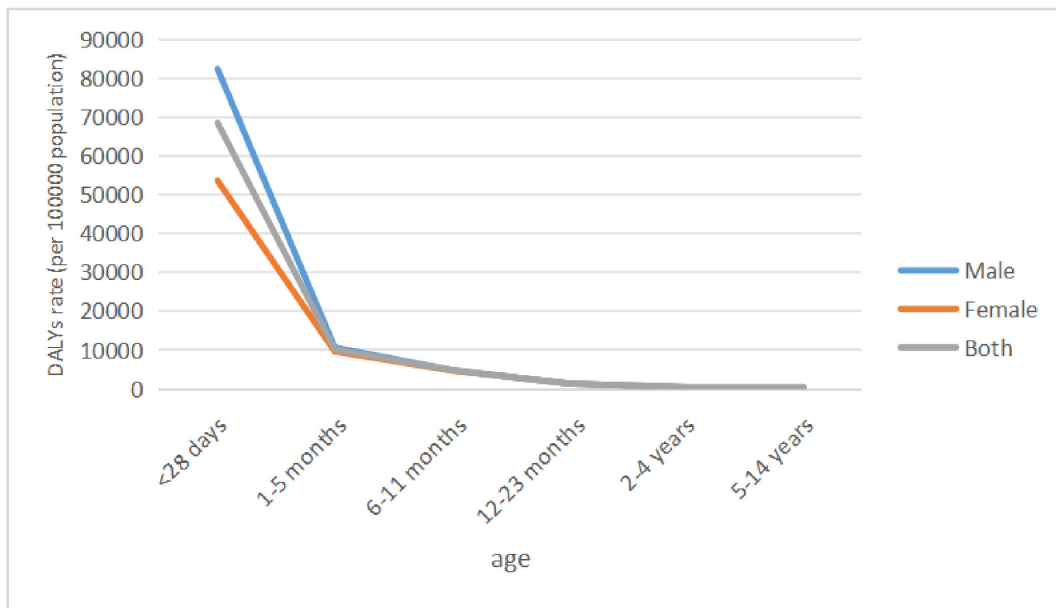
Supplementary Figure S1. Trends in number of deaths and death rate for childhood CHAs from 1990 to 2021



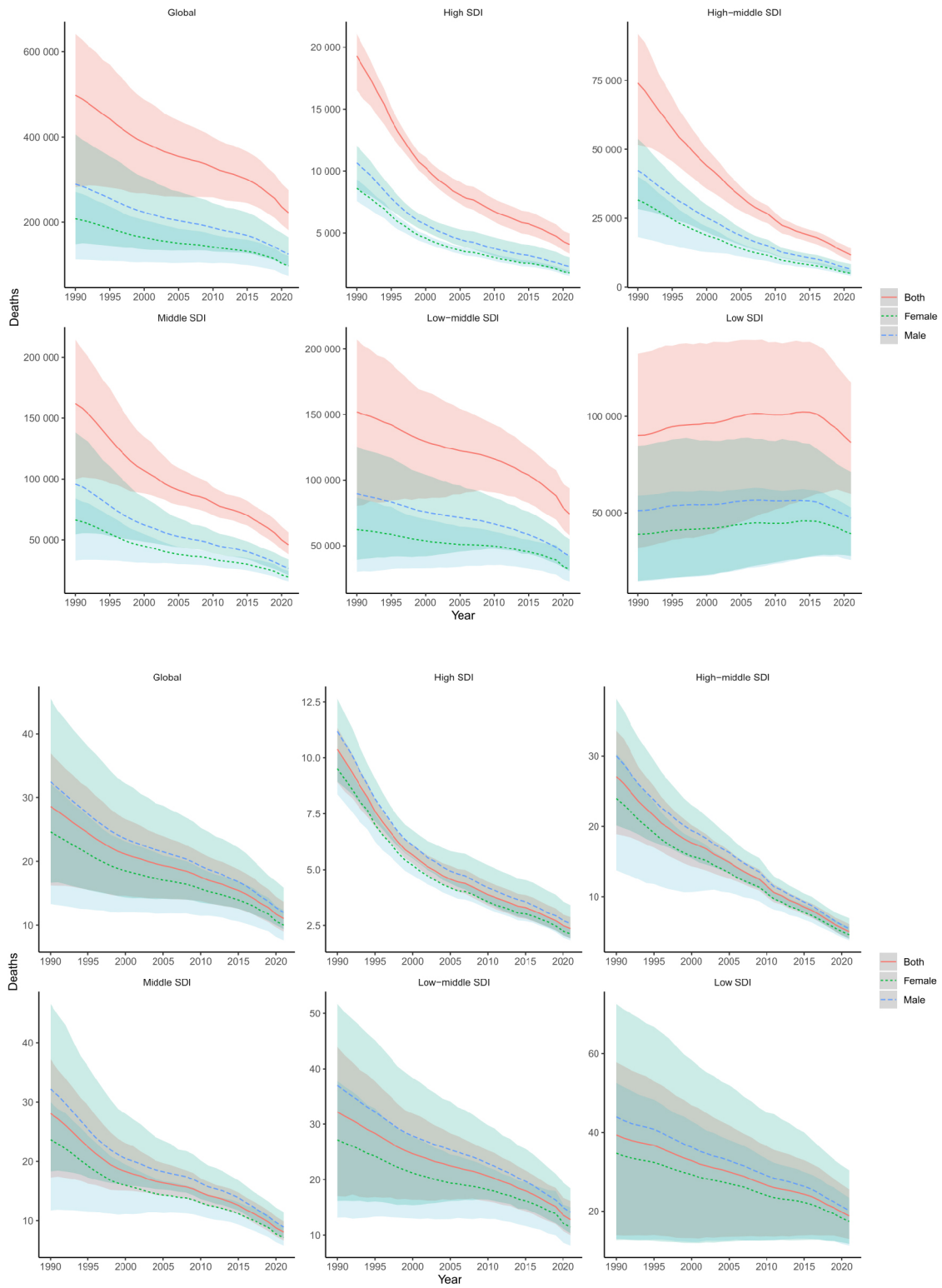
Supplementary Figure S1. Cont.



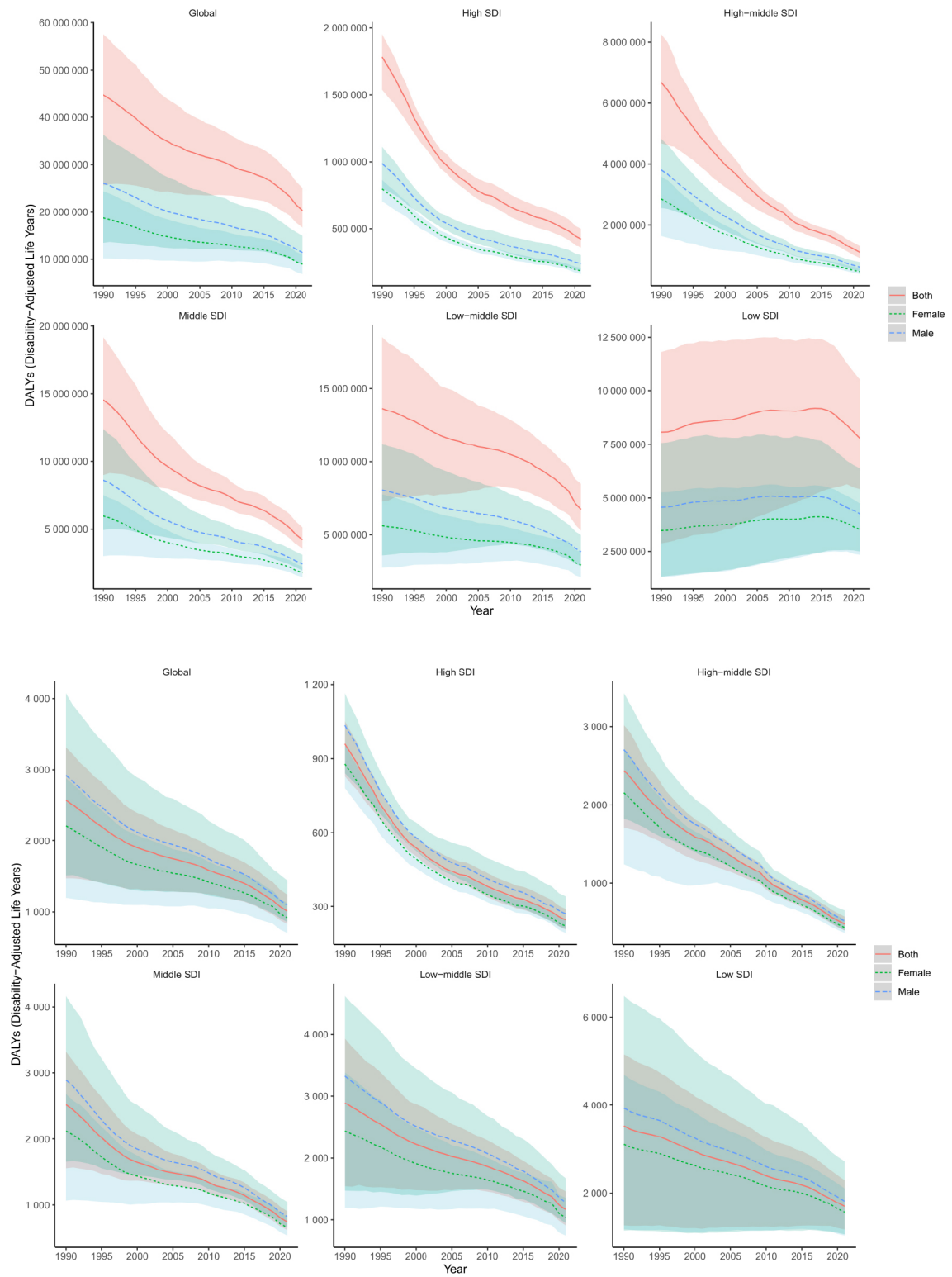
Supplementary Figure S2. Trends in number and rate of disability-adjusted life years (DALYs) for childhood CHAs from 1990 to 2021



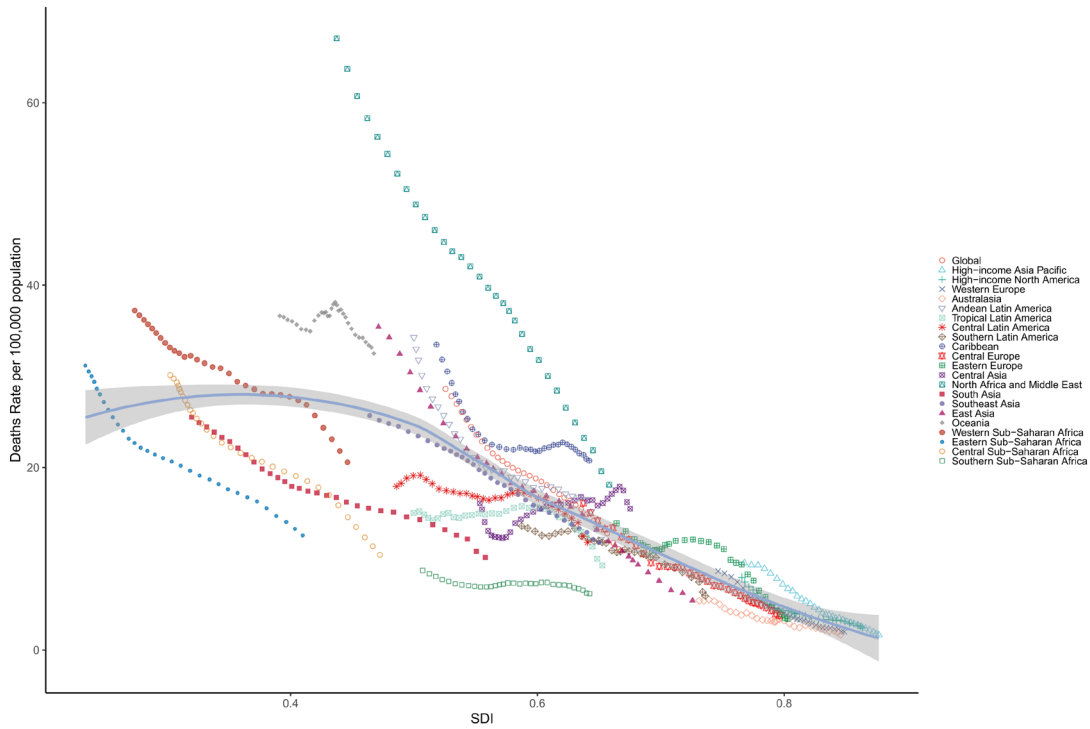
Supplementary Figure S2. Cont.



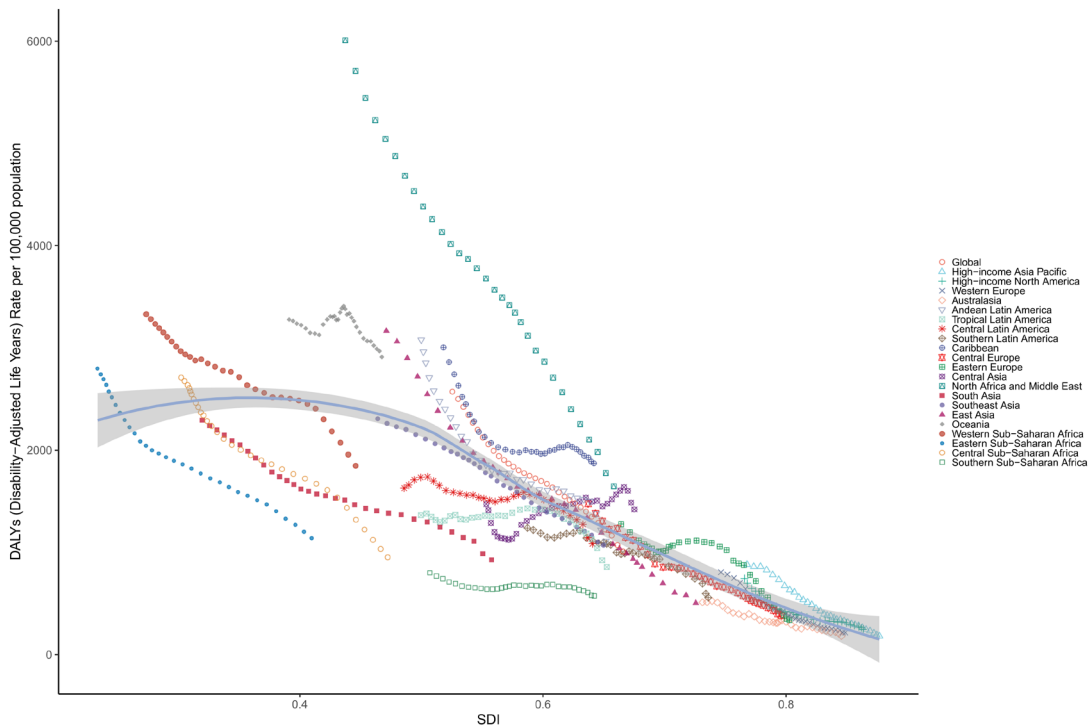
Supplementary Figure S3. Epidemiological trends in number of deaths and death rate due to childhood CHAs from 1990 to 2021 in five sociodemographic index (SDI) regions



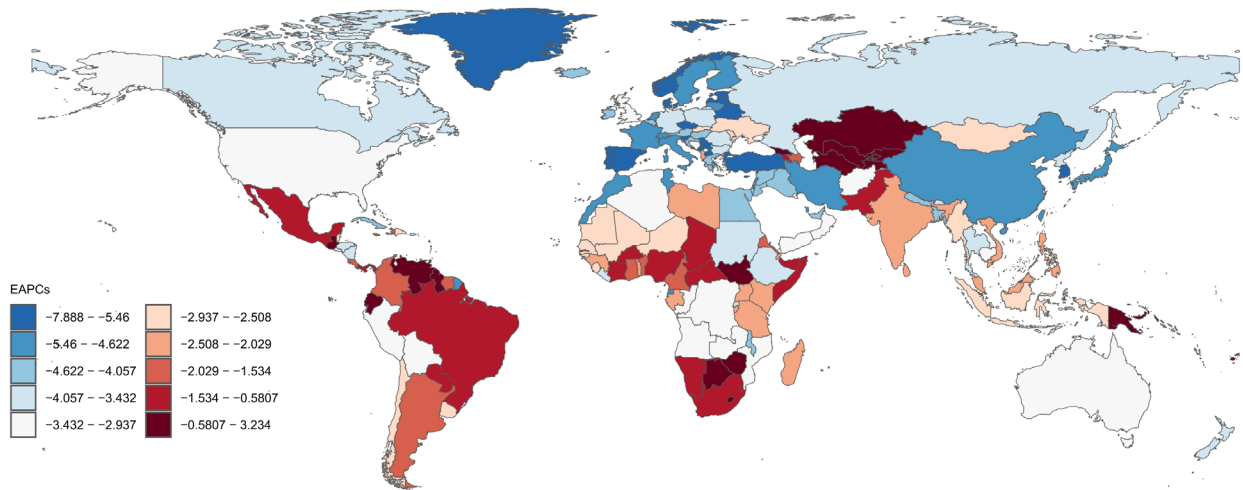
Supplementary Figure S4. Epidemiological trends in number of DALYs and DALY rate for childhood CHAs from 1990 to 2021 in five sociodemographic index (SDI) regions



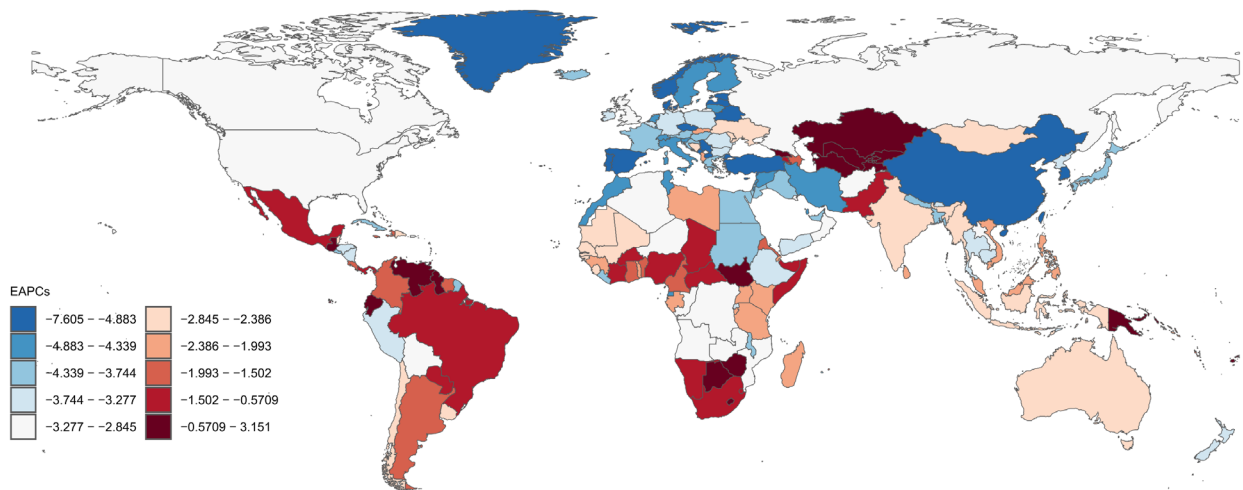
Supplementary Figure S5. Correlation analysis of childhood CHAs death rate with socio-demographic index (SDI) across 21 regions from 1990 to 2021



Supplementary Figure S6. Correlation analysis of childhood CHA DALY rate with socio-demographic index (SDI) across 21 regions from 1990 to 2021



Supplementary Figure S7. Changes in EAPC (estimated annual percentage change) for deaths due to CHA in children across 204 countries and territories



Supplementary Figure S8. Changes in EAPC (estimated annual percentage change) for DALYs due to CHA in children across 204 countries and territories