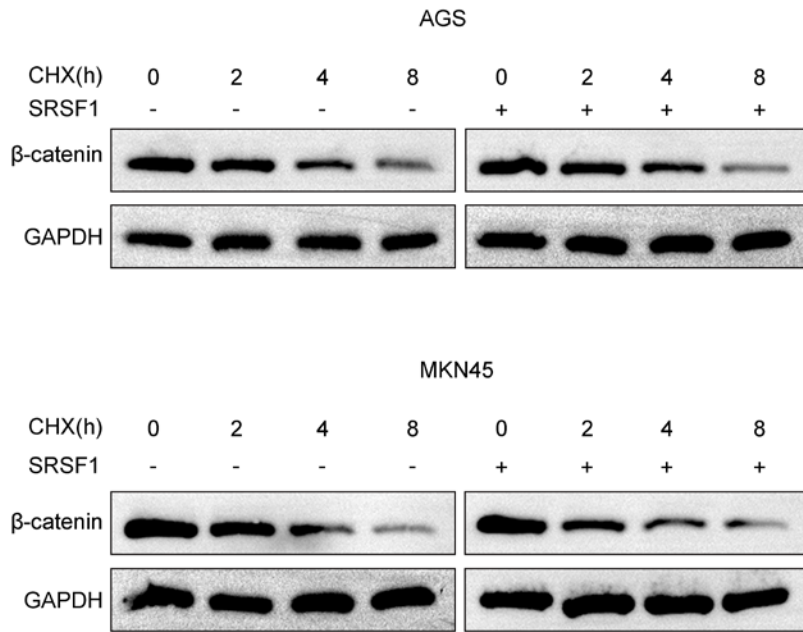
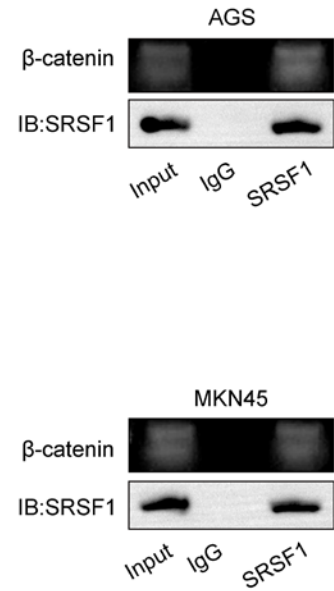


Supplementary Figure S1. Rescue experiments confirmed that ENTPD1-AS1 promotes GC cell proliferation, migration, and invasion through WIF1. **A**, **B** – CCK8 assay and colony formation assay were used to analyze the effect of simultaneous knockdown of ENTPD1-AS1 and WIF1 on the proliferation of GC cells, revealing that WIF1 knockdown restored the reduced proliferation of GC cells caused by ENTPD1-AS1 knockdown. **C** – Wound healing assay was performed to assess the effect of simultaneous knockdown of ENTPD1-AS1 and WIF1 on the migration of GC cells, indicating that WIF1 knockdown restored the decreased migration of GC cells induced by ENTPD1-AS1 knockdown. **D** – Transwell assay was conducted to evaluate the effect of simultaneous knockdown of ENTPD1-AS1 and WIF1 on the invasion of GC cells, demonstrating that WIF1 knockdown restored the reduced invasion of GC cells caused by ENTPD1-AS1 knockdown. * $p < 0.05$, ** $p < 0.01$

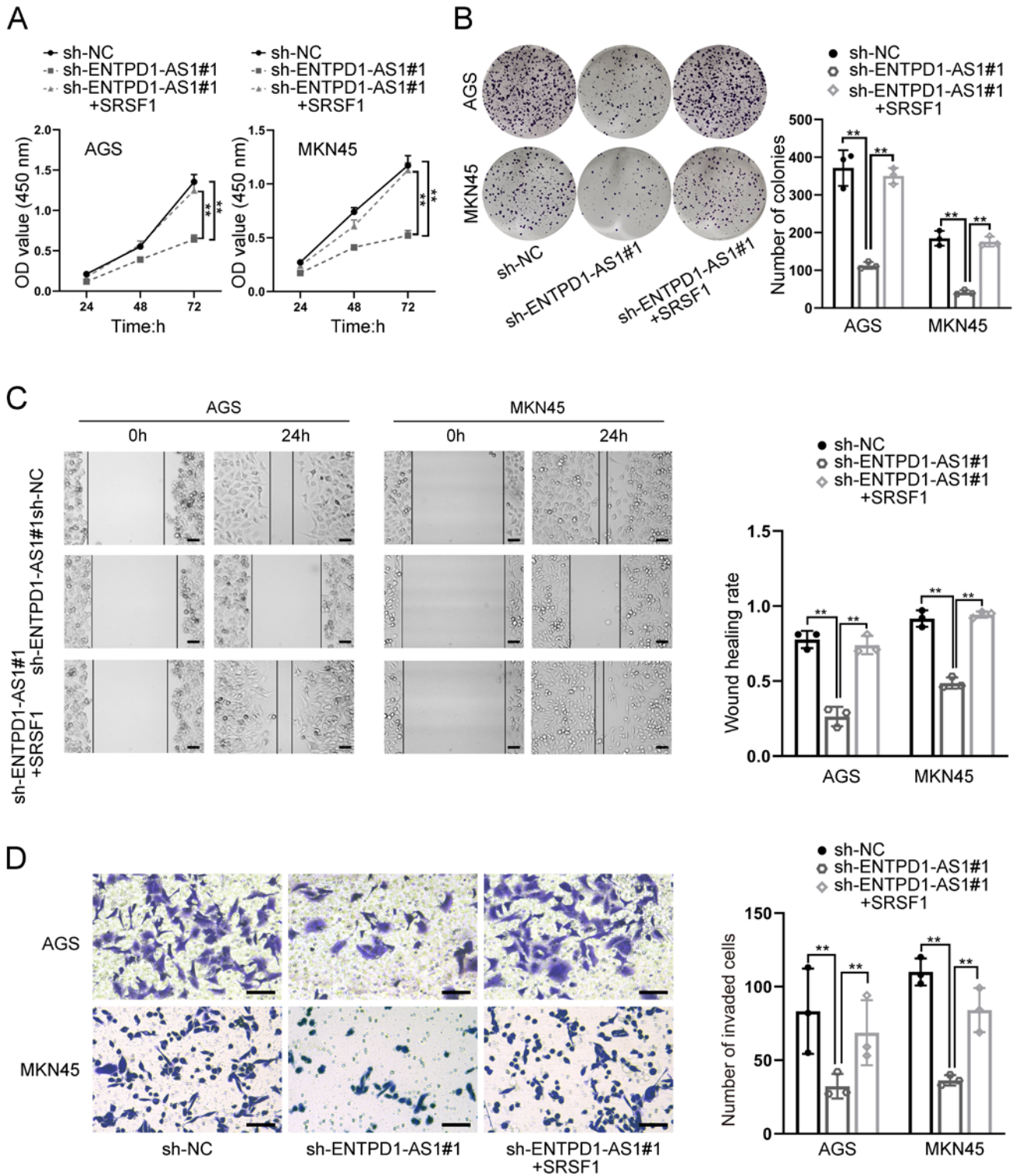
A



B



Supplementary Figure S2. SRSF1 does not affect β -catenin degradation but binds to β -catenin. **A** – CHX chase assay was performed to analyze the effect of SRSF1 on β -catenin protein degradation, showing that changes in SRSF1 expression did not affect β -catenin degradation. **B** – RIP analysis indicated the binding of SRSF1 to β -catenin mRNA



Supplementary Figure S3. Rescue experiments confirmed that ENTDP1-AS1 promotes proliferation, migration, and invasion of GC cells through SRSF1. **A, B** – CCK8 assay and colony formation assay were used to analyze the effect of ENTDP1-AS1 knockdown and SRSF1 overexpression on the proliferation of GC cells, demonstrating that SRSF1 overexpression restored the decreased proliferation of GC cells caused by ENTDP1-AS1 knockdown. **C** – Wound healing assay was performed to assess the effect of ENTDP1-AS1 knockdown and SRSF1 overexpression on the migration of GC cells, indicating that SRSF1 overexpression restored the decreased migration of GC cells induced by ENTDP1-AS1 knockdown. **D** – Transwell assay was conducted to evaluate the effect of ENTDP1-AS1 knockdown and SRSF1 overexpression on the invasion of GC cells, showing that SRSF1 overexpression restored the reduced invasion of GC cells caused by ENTDP1-AS1 knockdown. $**p < 0.01$