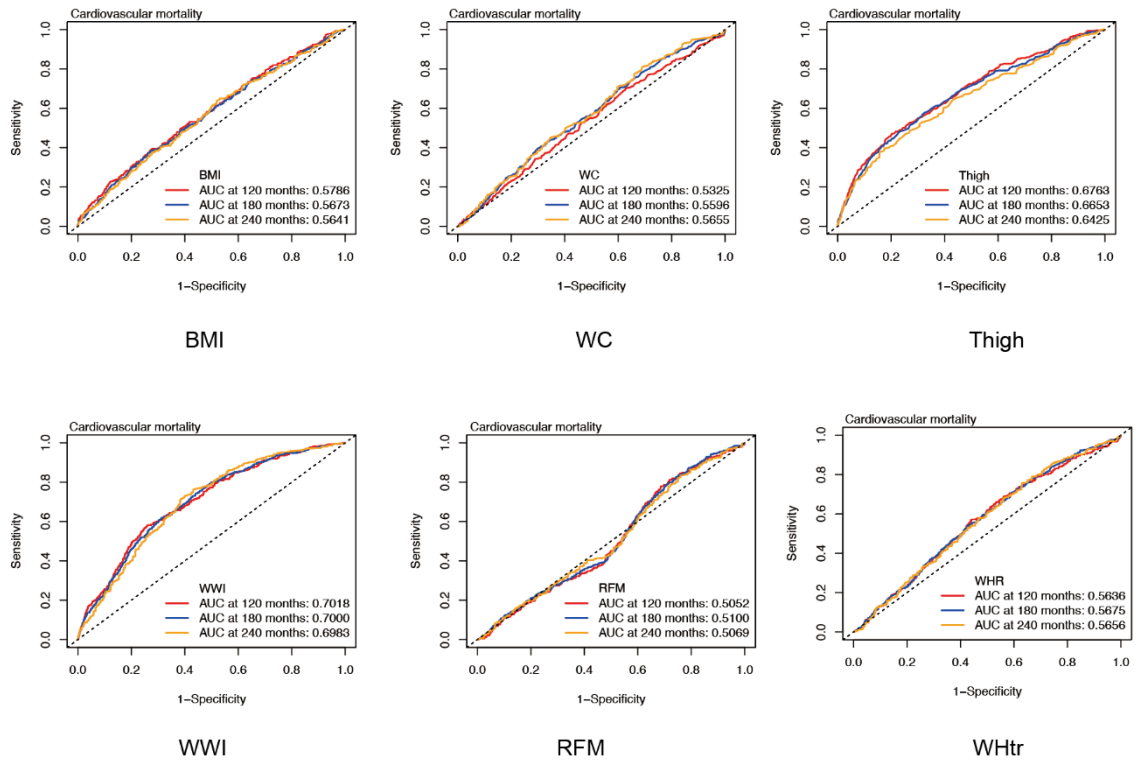


**Supplementary Figure S1.** Time-dependent ROC curves for BMI, WC, thigh circumference, WHtR, WWI, and RFM predicting all-cause mortality



**Supplementary Figure S2.** Time-dependent ROC curves for BMI, WC, thigh circumference, WHtR, WWI, and RFM predicting cardiovascular mortality

**Supplementary Table SI.** Association between apVAT and mortality in NAFLD participants with USFLI  $\geq 30$

apVAT	Number of deaths	Model 1	Model 2	Model 3	Model 4
		HR (95%CI) <i>P</i> -value			
All-cause mortality					
Per SD increase	771/2211	1.62 (1.52, 1.73) < 0.001	1.28 (1.18, 1.40) < 0.001	1.25 (1.14, 1.37) < 0.001	1.93 (1.62, 2.29) < 0.001
Quantiles					
Q1	96/553	Ref.	Ref.	Ref.	Ref.
Q2	148/552	1.63 (1.26, 2.11) < 0.001	0.87 (0.67, 1.14) 0.320	0.90 (0.68, 1.20) 0.465	1.12 (0.80, 1.57) 0.499
Q3	235/553	2.92 (2.31, 3.71) < 0.001	1.24 (0.96, 1.59) 0.100	1.22 (0.92, 1.60) 0.162	1.72 (1.21, 2.46) 0.003
Q4	292/553	4.19 (3.33, 5.28) < 0.001	1.51 (1.16, 1.96) 0.002	1.42 (1.07, 1.88) 0.016	2.50 (1.63, 3.83) < 0.001
<i>P</i> for trend		< 0.001	< 0.001	< 0.001	< 0.001
Cardiovascular mortality					
Per SD increase	216/2211	1.74 (1.55, 1.97) < 0.001	1.38 (1.16, 1.63) < 0.001	1.36 (1.14, 1.62) < 0.001	1.90 (1.38, 2.62) < 0.001
Quantiles					
Q1	24/553	Ref.	Ref.	Ref.	Ref.

Q2	36/552	1.59 (0.95, 2.67) 0.078	0.83 (0.49, 1.40) 0.477	0.87 (0.48, 1.57) 0.645	1.02 (0.51, 2.03) 0.959
Q3	62/553	3.09 (1.93, 4.95) < 0.001	1.21 (0.73, 1.99) 0.461	1.38 (0.79, 2.39) 0.255	1.84 (0.91, 3.71) 0.088
Q4	94/553	5.41 (3.45, 8.48) < 0.001	1.78 (1.07, 2.94) 0.026	1.78 (1.02, 3.12) 0.043	2.72 (1.19, 6.22) 0.018
<i>P</i> for trend		< 0.001	0.001	0.003	0.003

HR – hazard ratio, 95% CI – 95% confidence interval, SD – standard deviation, apVAT – anthropometrically predicted visceral adipose tissue, NAFLD – non-alcoholic fatty liver disease. Model 1: non-adjusted. Model 2: adjusted for age, sex, and ethnicity. Model 3: adjusted for age, sex, ethnicity, marital status, education level, PIR, and smoking history. Model 4: adjusted for age, sex, ethnicity, marital status, education level, PIR, smoking history, diabetes, hypertension, HbA1c, ALT/AST, TG, HDL-c, LDL-c, SCr, and SUA.

**Supplementary Table SII.** Association between apVAT and mortality in NAFLD participants with FLI  $\geq 60$

apVAT	Number of deaths	Model 1	Model 2	Model 3	Model 4
		HR (95% CI) <i>P</i> -value			
All-cause mortality					
Per SD increase	1733/5873	1.80 (1.73, 1.87) < 0.001	1.41 (1.34, 1.49) < 0.001	1.37 (1.29, 1.45) < 0.001	2.16 (1.86, 2.50) < 0.001
Quantiles					
Q1	122/1468	Ref.	Ref.	Ref.	Ref.
Q2	298/1468	2.61 (2.11, 3.22) < 0.001	1.40 (1.13, 1.75) 0.002	1.44 (1.14, 1.82) 0.002	1.17 (0.80, 1.70) 0.416
Q3	545/1468	5.38 (4.42, 6.54) < 0.001	2.11 (1.71, 2.61) < 0.001	2.07 (1.65, 2.59) < 0.001	2.28 (1.57, 3.32) < 0.001
Q4	768/1469	8.97 (7.40, 10.86) < 0.001	2.98 (2.40, 3.70) < 0.001	2.85 (2.26, 3.59) < 0.001	3.87 (2.53, 5.92) < 0.001
<i>P</i> for trend		< 0.001	< 0.001	< 0.001	< 0.001
Cardiovascular mortality					
Per SD increase	474/5873	1.88 (1.75, 2.03) < 0.001	1.46 (1.31, 1.62) < 0.001	1.40 (1.25, 1.57) < 0.001	2.18 (1.67, 2.86) < 0.001
Quantiles					
Q1	22/1468	Ref.	Ref.	Ref.	Ref.

Q2	80/1468	3.87 (2.41, 6.20) < 0.001	1.90 (1.17, 3.08) 0.010	2.23 (1.29, 3.85) 0.004	1.51 (0.65, 3.51) 0.335
Q3	149/1468	8.10 (5.18, 12.67) < 0.001	2.79 (1.74, 4.48) < 0.001	3.25 (1.90, 5.54) < 0.001	3.58 (1.57, 8.15) 0.002
Q4	223/1469	14.27 (9.20, 22.12) < 0.001	4.08 (2.53, 6.61) < 0.001	4.41 (2.57, 7.57) < 0.001	6.05 (2.46, 14.86) < 0.001
<i>P</i> for trend		< 0.001	< 0.001	< 0.001	< 0.001

HR – hazard ratio, 95% CI – 95% confidence interval, SD – standard deviation, apVAT – anthropometrically predicted visceral adipose tissue, NAFLD – non-alcoholic fatty liver disease. Model 1: non-adjusted. Model 2: adjusted for age, sex, and ethnicity. Model 3: adjusted for age, sex, ethnicity, marital status, education level, PIR, and smoking history. Model 4: adjusted for age, sex, ethnicity, marital status, education level, PIR, smoking history, diabetes, hypertension, HbA1c, ALT/AST, TG, HDL-c, LDL-c, SCr, and SUA.