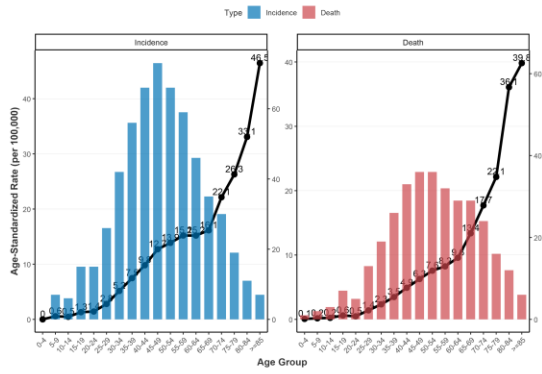
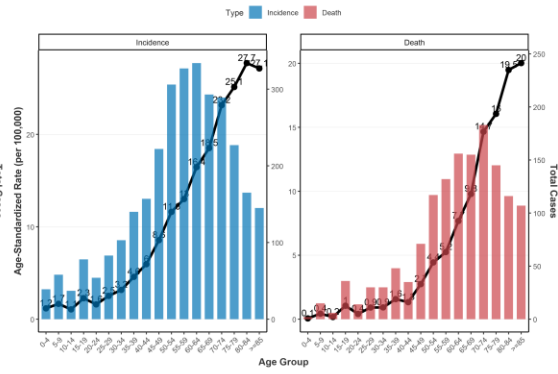


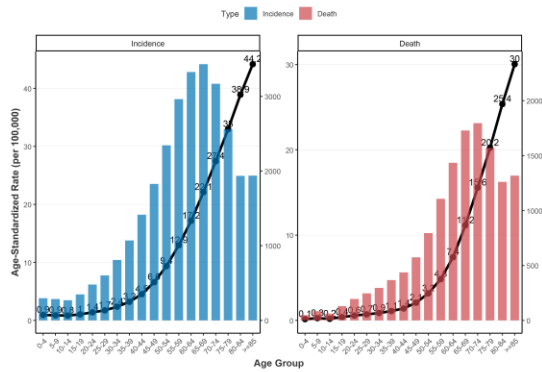
Age-Specific Burden of NHL (2022) - Melanesia



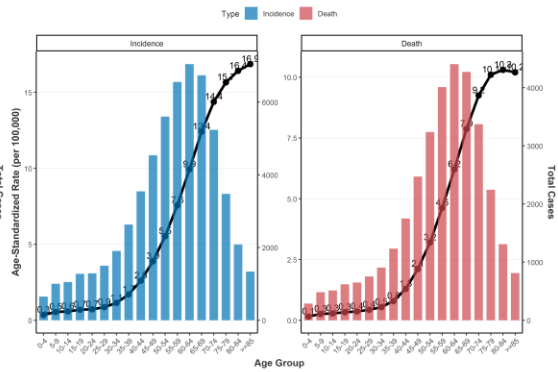
Age-Specific Burden of NHL (2022) - Caribbean



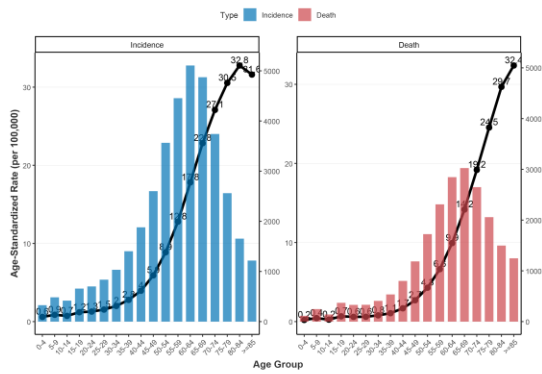
Age-Specific Burden of NHL (2022) - South America



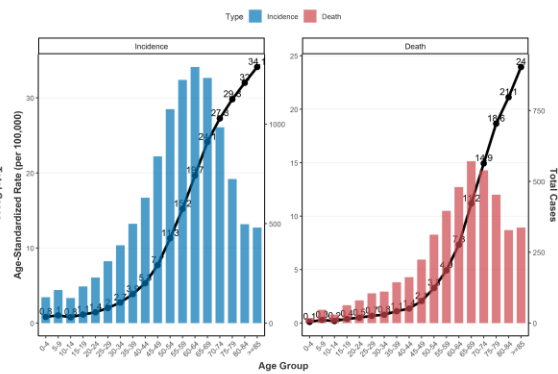
Age-Specific Burden of NHL (2022) - South Central Asia



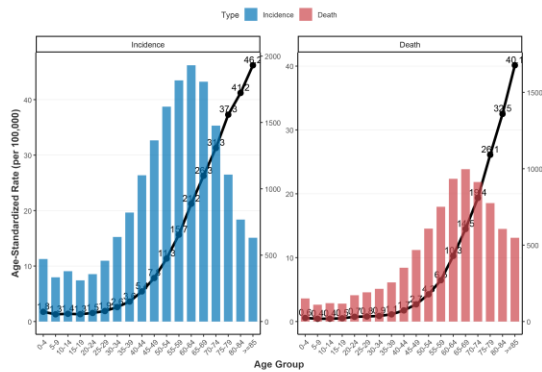
Age-Specific Burden of NHL (2022) - South-Eastern Asia



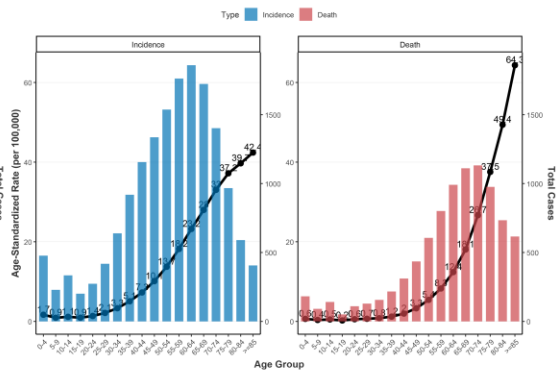
Age-Specific Burden of NHL (2022) - Central America



Age-Specific Burden of NHL (2022) - Western Asia

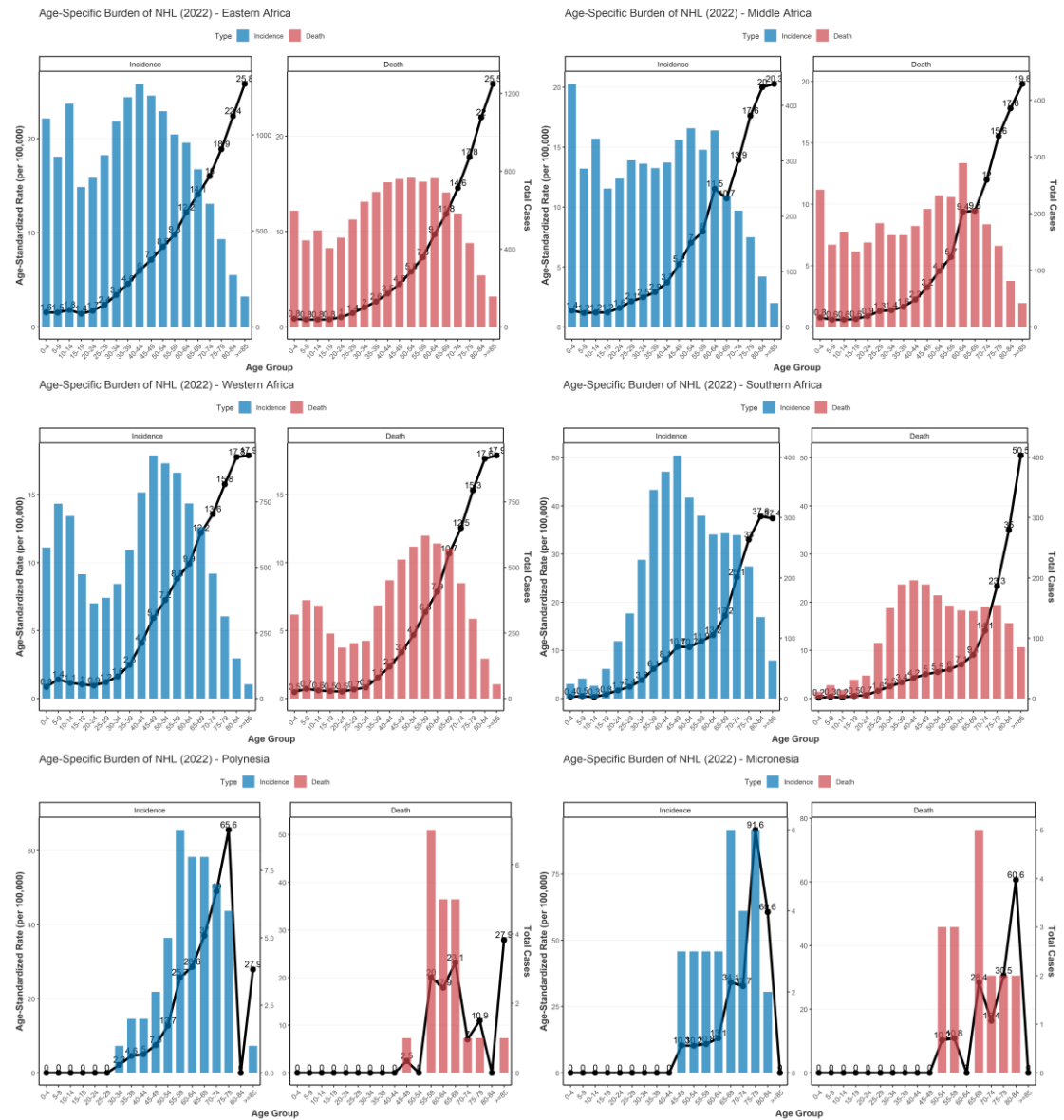


Age-Specific Burden of NHL (2022) - Northern Africa



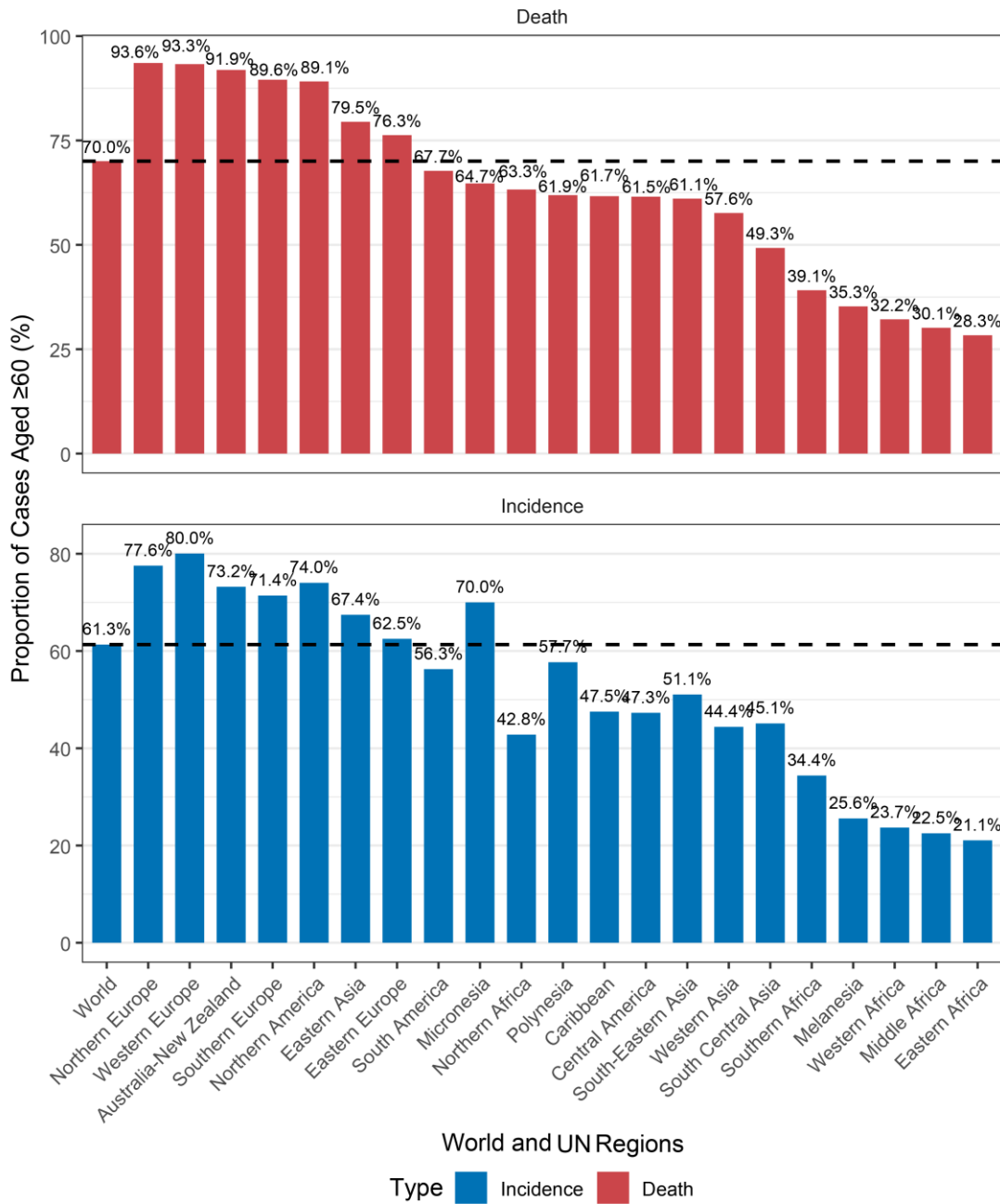
(Fig S1 continues on next

page)

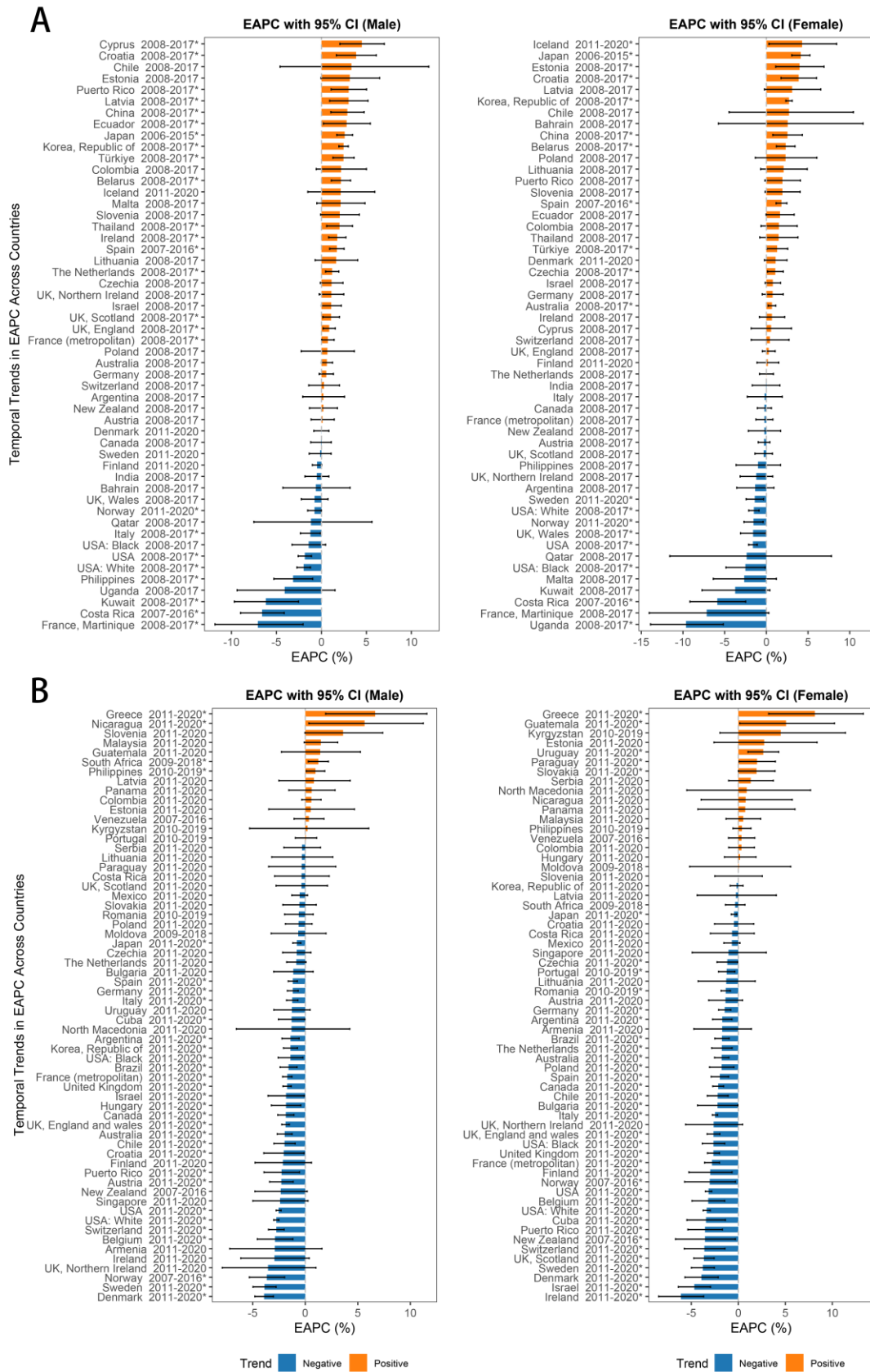


Supplementary Figure S1. Age-standardized rates (per 100,000) of non-Hodgkin lymphoma, by age group and UN region, 2022

Proportion of Non-Hodgkin Lymphoma Cases in Elderly (≥60 years)

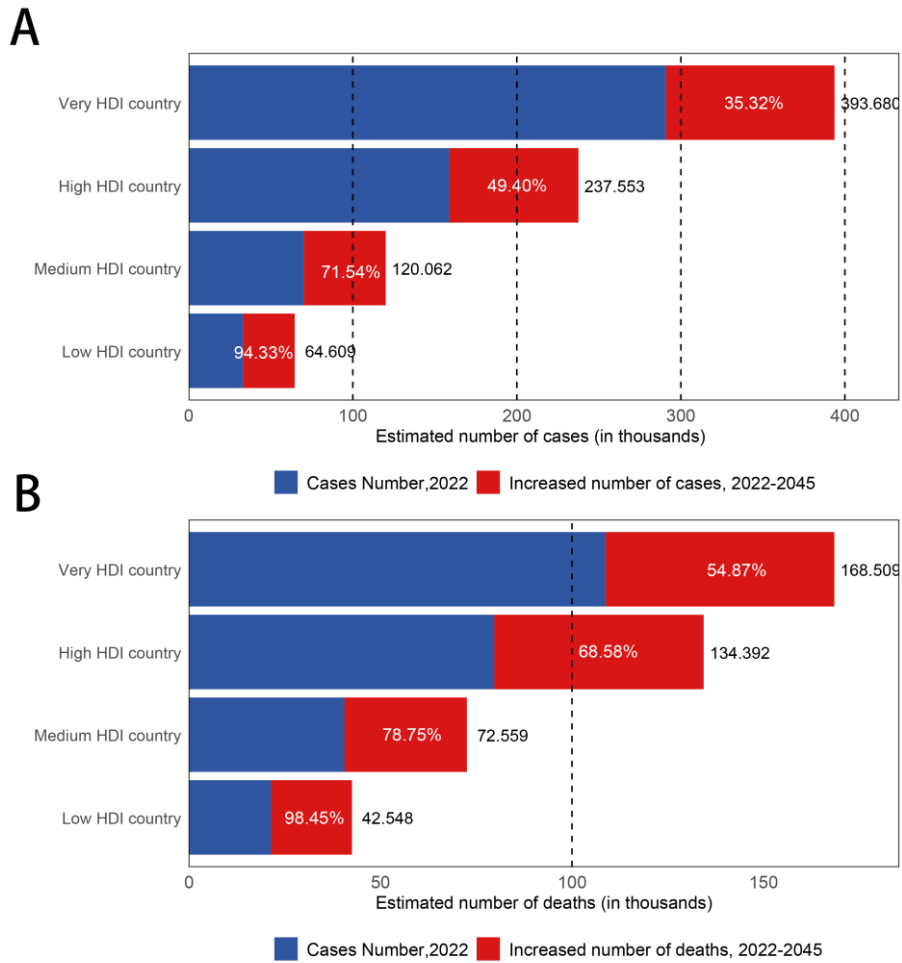


Supplementary Figure S2. Proportion of non-Hodgkin lymphoma cases and deaths in individuals aged 60+ years among all cases, by UN region, 2022

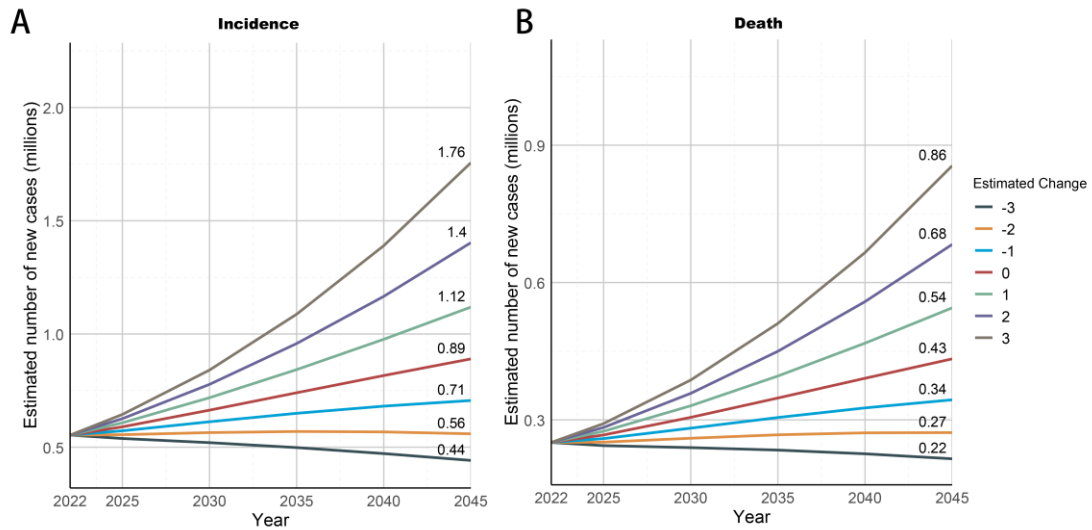


Supplementary Figure S3. Estimated annual percentage change (EAPC) in age-standardized incidence rate (ASIR) and age-standardized mortality rate (ASMR) of non-Hodgkin lymphoma (NHL) by sex and

country/region, 1971–2020. (A) ASIR; (B) ASMR. Note: An asterisk (*) following the country name and time period denotes a statistically significant trend ($p < 0.05$)



Supplementary Figure S4. Estimated number of incidence and deaths of NHL from 2022 to 2045, by HDI group, both sexes, and age group [0-85+]



Supplementary Figure S5. Predicted number of new cases and deaths from NHL assuming seven scenarios of annual change in global rates from 2022 to 2045

Supplementary Table SI. New incidence and mortality, and age-standardized rates (per 100,000 person-years) of non-Hodgkin lymphoma (NHL) by country, 2022

Country	Region	Incidence		Mortality	
		ASIR	cases	ASMR	cases
Australia	Australia/New Zealand	12.38	5906	2.77	1875
New Zealand	Australia/New Zealand	10.32	951	3.14	383
Puerto Rico	Caribbean	9.35	546	2.75	199
Barbados	Caribbean	7.64	36	3.32	19
Saint Lucia	Caribbean	7.26	17	3.43	8
Trinidad and Tobago	Caribbean	7.14	128	2.97	59
Jamaica	Caribbean	6.89	238	3.94	142
Cuba	Caribbean	6.35	1152	2.55	522
Bahamas	Caribbean	6.19	30	3.16	16
France, Guadeloupe	Caribbean	5.65	43	2.1	20
France, Martinique	Caribbean	4.38	38	2.87	27
Haiti	Caribbean	4.37	449	1.85	183
Dominican Republic	Caribbean	2.55	295	1.35	165
Mexico	Central America	6.23	9000	2.15	3223
Honduras	Central America	6.06	514	4.37	359
Costa Rica	Central America	5.72	411	2.88	226
Nicaragua	Central America	4.64	296	2.59	163
Panama	Central America	4.46	231	2.19	122

El Salvador	Central America	2.5	184	1.25	96
Guatemala	Central America	2.48	361	1.46	209
Belize	Central America	2.24	8	0.63	2
Zimbabwe	Eastern Africa	10.26	1070	7.38	724
Uganda	Eastern Africa	7.36	2269	5.5	1492
Malawi	Eastern Africa	6.51	1306	4.08	724
France, La Réunion	Eastern Africa	5.58	81	1.94	34
Mozambique	Eastern Africa	5.56	1367	4.26	990
Djibouti	Eastern Africa	5.04	45	3.75	32
Eritrea	Eastern Africa	4.94	131	3.68	95
Kenya	Eastern Africa	4.78	1680	3.46	1089
Burundi	Eastern Africa	4.53	378	3.51	265
Somalia	Eastern Africa	4.27	465	3.22	322
Comoros	Eastern Africa	4.24	31	3.02	23
Ethiopia	Eastern Africa	4.11	3568	2.83	2343
Madagascar	Eastern Africa	4.05	905	2.38	474
South Sudan	Eastern Africa	3.49	278	2.66	197
Zambia	Eastern Africa	3.49	407	2.56	260
Tanzania, United Republic of	Eastern Africa	3.26	1339	2.45	898
Rwanda	Eastern Africa	3.01	317	2.12	206
Mauritius	Eastern Africa	2.52	47	1.15	23
Japan	Eastern Asia	9.44	36179	2.57	15408
Republic of Korea	Eastern Asia	5.74	5325	2.1	2544
China	Eastern Asia	3.53	80829	1.56	39700
Korea (Democratic People Republic of)	Eastern Asia	2.01	700	1.21	425
Mongolia	Eastern Asia	1.53	45	1.07	32
Czechia	Eastern Europe	7.86	1765	2.24	648
Hungary	Eastern Europe	7.28	1316	2.2	507
Belarus	Eastern Europe	6.4	1023	2.63	476
Slovakia	Eastern Europe	6.29	683	2.48	309
Moldova	Eastern Europe	5.81	310	2.74	165
Poland	Eastern Europe	5.59	4169	2.62	2374
Romania	Eastern Europe	5.56	1754	1.97	749
Russian Federation	Eastern Europe	5.23	12070	2.33	6338
Bulgaria	Eastern Europe	3.97	492	2.06	319
Ukraine	Eastern Europe	3.88	2636	1.88	1410
New Caledonia	Melanesia	7.96	32	2.33	10
Papua New Guinea	Melanesia	6.59	474	4.2	279
Fiji	Melanesia	5.26	51	2.63	24
Vanuatu	Melanesia	3.62	11	2.43	7
Solomon Islands	Melanesia	1.66	11	1.38	9
Guam	Micronesia	4.74	12	2.7	7

Cameroon	Middle Africa	7.8	1480	4.75	834
Equatorial Guinea	Middle Africa	5.08	56	3.58	36
Central African Republic	Middle Africa	4.63	135	3.77	102
Gabon	Middle Africa	3.92	77	2.68	47
Congo, Democratic Republic of	Middle Africa	3.13	1939	2.41	1387
Angola	Middle Africa	2.8	792	1.83	466
Chad	Middle Africa	2.54	349	1.83	234
Congo, Republic of	Middle Africa	1.2	50	0.82	30
Sao Tome and Principe	Middle Africa	0	0	0	0
Egypt	Northern Africa	9.57	8861	5.16	4593
Tunisia	Northern Africa	5.8	863	2.79	447
Morocco	Northern Africa	5.67	2381	3.06	1323
Libya	Northern Africa	5.28	333	3.85	222
Sudan	Northern Africa	4.9	1529	3.49	1004
Algeria	Northern Africa	4.86	2226	2.54	1187
United States of America	Northern America	12.54	77956	2.55	20827
Canada	Northern America	12.11	9481	3.47	3879
Denmark	Northern Europe	14	1758	2.3	404
Ireland	Northern Europe	11.6	1028	2.74	328
Finland	Northern Europe	11.37	1502	2.85	576
United Kingdom	Northern Europe	11.16	16047	2.83	5671
Norway	Northern Europe	10.89	1198	2.33	392
Sweden	Northern Europe	10.7	2375	2.46	866
Iceland	Northern Europe	10.18	66	2.01	17
Estonia	Northern Europe	9.43	255	2.91	114
Latvia	Northern Europe	7.65	253	2.94	136
Lithuania	Northern Europe	5.8	306	2.1	161
Samoa	Polynesia	8.4	14	4.92	8
French Polynesia	Polynesia	6.89	26	2.28	9
Peru	South America	9.58	3897	4.07	1731
Uruguay	South America	8.74	487	3.47	234
French Guyana	South America	7.68	23	2.36	7
Ecuador	South America	7.43	1463	3.62	740
Argentina	South America	6.55	3838	2.48	1605
Venezuela	South America	6.2	2041	2.38	805
Colombia	South America	6.02	3864	2.81	1873
Guyana	South America	5.89	47	2.52	21
Paraguay	South America	5.79	412	2.2	162
Suriname	South America	5.63	37	2.19	14
Chile	South America	5.33	1569	2.3	753
Brazil	South America	3.97	11093	1.82	5372
Bolivia	South America	2.5	295	1.17	134
Maldives	South Central Asia	4.62	21	1.93	8

Pakistan	South Central Asia	4.07	7296	2.48	4344
Iran (Islamic Republic of)	South Central Asia	3.98	3655	2.01	1837
Sri Lanka	South Central Asia	3.32	1022	1.72	547
India	South Central Asia	2.78	39736	1.61	22972
Tajikistan	South Central Asia	2.27	189	1.57	129
Afghanistan	South Central Asia	2.24	618	1.73	452
Kazakhstan	South Central Asia	2.21	476	1.41	312
Nepal	South Central Asia	2.11	565	1.4	375
Bangladesh	South Central Asia	1.96	3096	1.2	1876
Uzbekistan	South Central Asia	1.78	605	1.08	354
Kyrgyzstan	South Central Asia	1.6	97	1	59
Bhutan	South Central Asia	1.4	9	1.22	8
Turkmenistan	South Central Asia	1.3	76	0.8	44
Singapore	South-Eastern Asia	11.27	1150	3.47	410
Brunei Darussalam	South-Eastern Asia	9.2	44	5.09	22
Malaysia	South-Eastern Asia	5.95	2144	3.56	1302
Thailand	South-Eastern Asia	5.85	6594	3.02	3747
Indonesia	South-Eastern Asia	5.49	16175	3.26	9440
Philippines	South-Eastern Asia	4.85	4989	2.84	2876
Cambodia	South-Eastern Asia	4.29	638	2.79	401
Lao People's Democratic Republic	South-Eastern Asia	4.27	267	2.63	158
Timor-Leste	South-Eastern Asia	3.65	38	2.12	20
Myanmar	South-Eastern Asia	3.42	1959	2.16	1229
Viet Nam	South-Eastern Asia	3.04	3516	1.89	2211
Namibia	Southern Africa	7.35	151	4.92	92
South Africa	Southern Africa	5.6	3259	3.25	1867
Botswana	Southern Africa	4.29	99	2.75	58
Eswatini	Southern Africa	3.12	29	2.02	15
Lesotho	Southern Africa	2.57	50	1.73	33
Malta	Southern Europe	14.58	131	2.82	37
Italy	Southern Europe	11.63	15576	2.89	5879
Cyprus	Southern Europe	11.34	218	3.55	101
Portugal	Southern Europe	10.82	2437	3.25	1052
Slovenia	Southern Europe	10.28	478	3.81	247
Croatia	Southern Europe	10.18	846	2.74	335
Spain	Southern Europe	9.63	9070	2.23	3131
Greece	Southern Europe	7.42	1663	1.99	666
Serbia	Southern Europe	6.12	956	2.31	433
Montenegro	Southern Europe	5.58	57	2.69	31
Bosnia Herzegovina	Southern Europe	3.64	213	1.56	116
Albania	Southern Europe	2.3	99	0.86	49
North Macedonia	Southern Europe	2.29	82	1.3	50
Ghana	Western Africa	5.01	1374	3.21	813

Cote d'Ivoire	Western Africa	4.77	958	3.39	608
Nigeria	Western Africa	3.96	5194	2.84	3414
Togo	Western Africa	3.77	245	2.8	165
Liberia	Western Africa	3.57	149	2.57	100
Guinea-Bissau	Western Africa	2.76	42	2.08	29
Guinea	Western Africa	2.61	277	1.84	177
Mauritania	Western Africa	2.61	99	1.82	65
Mali	Western Africa	2.59	410	1.91	279
Senegal	Western Africa	2.4	325	1.7	210
Burkina Faso	Western Africa	2.33	380	1.72	253
Cape Verde	Western Africa	2.31	12	1.51	7
Benin	Western Africa	2.08	175	1.52	120
Niger	Western Africa	1.76	361	1.36	260
The Republic of the Gambia	Western Africa	1.67	38	1.34	28
Sierra Leone	Western Africa	0.64	67	0.41	43
Israel	Western Asia	13.89	1680	3.39	544
Lebanon	Western Asia	8.4	644	4.38	347
Bahrain	Western Asia	7.15	91	2.52	26
Gaza Strip and West Bank	Western Asia	6.73	238	4.17	133
Iraq	Western Asia	6.59	1930	3.78	1013
Türkiye	Western Asia	6.58	6801	2.78	3050
Jordan	Western Asia	6.52	542	3.66	286
Oman	Western Asia	6.33	265	3.87	136
Kuwait	Western Asia	6.2	258	2.81	92
Saudi Arabia	Western Asia	5.95	1909	3.29	908
Syrian Arab Republic	Western Asia	5.51	914	3.39	545
Georgia	Western Asia	5	297	2.33	160
United Arab Emirates	Western Asia	4.01	211	2.01	76
Qatar	Western Asia	3.91	96	1.88	41
Azerbaijan	Western Asia	3.63	424	1.84	223
Yemen	Western Asia	3.61	851	2.67	585
Armenia	Western Asia	3.01	120	1.15	54
The Netherlands	Western Europe	11.98	4381	3.11	1584
France (metropolitan)	Western Europe	11.3	16972	2.79	6073
Belgium	Western Europe	10.74	2653	2.25	826
Switzerland	Western Europe	9.79	1904	2.26	648
Germany	Western Europe	8.95	18980	2.71	7879
Luxembourg	Western Europe	8.87	93	1.79	28
Austria	Western Europe	8.53	1600	2.53	703

