

**Supplementary Table SI.** The number of DALYs cases and age-standardized DALY rates of aortic aneurysm attributable to high BMI in adults aged  $\geq 60$  years, 1990 and 2021, with temporal trends in global and 21 GBD regions from 1990 to 2021

Location	1990			2021			1990–2021	
	Number of cases (95%UI)	Age-standardized rate/100000(95% UI)	DALYs	Number of cases (95%UI)	Age-standardized /100000(95% UI)	DALYs	rate	AAPC (95%CI)
Global	100417 (53138, 169589)	21.72 (11.45, 36.73)		164396 (86431, 277024)	15.33 (8.04, 25.86)			-1.13 (-1.23, -1.03)
Andean America	Latin 117 (55, 214)	5.00 (2.37, 9.15)		566 (276, 1028)	7.92 (3.86, 14.40)			1.58 (1.21, 1.96)
Australasia	2415 (1234, 4345)	77.55 (39.50, 139.50)		2033 (1010, 3625)	27.68 (13.80, 49.25)			-3.29 (-3.61, -2.96)
Caribbean	648 (343, 1084)	20.39 (10.76, 34.09)		1474 (755, 2562)	21.87 (11.20, 37.99)			0.29 (0.00, 0.57)
Central Asia	508 (255, 884)	8.90 (4.47, 15.53)		2213 (1168, 3788)	23.38 (12.29, 40.14)			3.21 (2.92, 3.52)
Central Europe	6834 (3552, 11770)	35.33 (18.31, 60.91)		11819 (6037, 20248)	39.03 (19.95, 66.83)			0.32 (0.03, 0.62)
Central America	Latin 1149 (594, 2018)	12.13 (6.25, 21.29)		5015 (2482, 8584)	16.45 (8.13, 28.19)			0.96 (0.69, 1.23)
Central Africa	Sub-Saharan 239 (105, 476)	9.81 (4.26, 19.52)		845 (363, 1723)	15.09 (6.41, 30.85)			1.41 (1.33, 1.50)
East Asia	890 (419, 1624)	0.89 (0.42, 1.63)		6998 (3480, 12570)	2.55 (1.26, 4.57)			3.45 (3.25, 3.65)
Eastern Europe	8872 (4732, 14853)	24.19 (12.87, 40.58)		23695 (12113, 40697)	49.31 (25.18, 84.65)			2.45 (1.45, 3.45)

Eastern Sub-Saharan Africa	374 (164, 731)	4.63 (2.02, 9.06)	1531 (656, 3008)	8.54 (3.67, 16.80)	1.98 (1.91, 2.06)
High-income Asia Pacific	3231 (1703, 5384)	12.97 (6.81, 21.62)	13840 (6696, 23982)	20.66 (10.20, 35.56)	1.48 (1.25, 1.71)
High-income America	26484 (13728, 46008)	56.08 (29.05, 97.27)	19893 (10061, 34968)	22.20 (11.26, 38.97)	-3.02 (-3.24, -2.80)
North Africa and Middle East	1027 (455, 1923)	5.23 (2.31, 9.76)	5698 (2904, 10317)	11.11 (5.65, 20.16)	2.46 (2.31, 2.61)
Oceania	34 (17, 64)	11.70 (5.59, 21.75)	106 (54, 185)	14.10 (7.06, 24.82)	0.58 (0.45, 0.72)
South Asia	898 (363, 1770)	1.45 (0.58, 2.85)	7952 (3876, 14329)	4.56 (2.22, 8.22)	3.82 (3.56, 4.09)
Southeast Asia	645 (320, 1098)	2.42 (1.19, 4.12)	4302 (2227, 7213)	5.95 (3.06, 10.01)	2.95 (2.80, 3.10)
Southern America	2323 (1188, 4129)	39.48 (20.14, 70.19)	3826 (1902, 6843)	33.80 (16.83, 60.40)	-0.38 (-0.64, -0.12)
Southern Saharan Africa	699 (341, 1228)	23.53 (11.42, 41.33)	1792 (902, 3134)	27.95 (13.98, 49.10)	0.55 (0.32, 0.78)
Tropical America	2636 (1373, 4499)	24.29 (12.65, 41.53)	13945 (7107, 24426)	43.46 (22.13, 76.21)	1.88 (1.60, 2.16)
Western Europe	39411 (20977, 66322)	50.75 (26.99, 85.39)	33332 (16897, 58263)	26.25 (13.41, 45.75)	-2.12 (-2.24, -2.00)
Western Sub-Saharan Africa	983 (403, 2028)	10.22 (4.20, 21.05)	3521 (1389, 7367)	17.67 (6.97, 36.93)	1.80 (1.74, 1.87)

Note: Abbreviations: BMI, body mass index; DALYs, Disability-Adjusted Life Years; AAPC, average annual percentage change.

**Supplementary Table SII.** The number of death/DALYs cases and age-standardized death/DALYs rates of aortic aneurysm attributable to high BMI in adults aged  $\geq 60$  years, 1990 and 2021, with temporal trends in 204 countries and territories from 1990 to 2021

Countries	Number of death cases (95%UI)	ASDR/100000(9 5% UI)	AAPC	Number of DALYs cases (95%UI)	Age-standardized rate/100000(95% UI)	DALYs AAPC
Afghanistan	1 (0, 2)	0.11 (0.04, 0.21)	5.67 (5.51, 5.83)	18 (7, 34)	2.15 (0.87, 4.23)	5.64 (5.47, 5.81)
Albania	4 (2, 9)	0.78 (0.31, 1.61)	1.17 (0.82, 1.52)	79 (31, 165)	13.45 (5.25, 28.06)	1.01 (0.71, 1.31)
Algeria	8 (3, 16)	0.23 (0.09, 0.47)	5.20 (4.94, 5.47)	146 (62, 289)	3.76 (1.56, 7.52)	5.00 (4.80, 5.20)
American Samoa	0 (0, 0)	2.02 (0.89, 3.91)	0.31 (-0.07, 0.69)	2 (1, 4)	35.39 (15.98, 67.53)	0.18 (-0.21, 0.56)
Andorra	0 (0, 1)	2.22 (0.89, 4.72)	-1.51 (-1.97, -1.06)	7 (3, 15)	36.61 (14.63, 78.23)	-1.61 (-2.09, -1.14)
Angola	9 (4, 18)	0.81 (0.33, 1.74)	2.16 (2.04, 2.27)	189 (79, 401)	15.59 (6.40, 33.23)	2.08 (1.96, 2.20)
Antigua and Barbuda	0 (0, 0)	1.11 (0.53, 2.07)	-0.44 (-1.51, 0.63)	3 (1, 5)	19.91 (9.55, 37.17)	-0.40 (-1.62, 0.81)
Argentina	133 (64, 250)	1.81 (0.87, 3.39)	-0.47 (-0.82, -0.11)	2448 (1197, 4524)	33.70 (16.49, 62.16)	-0.49 (-0.86, -0.12)
Armenia	33 (16, 61)	5.84 (2.75, 10.77)	3.12 (2.68, 3.55)	628 (303, 1136)	107.17 (51.57, 195.13)	2.87 (2.46, 3.28)
Australia	101 (49, 184)	1.56 (0.75, 2.83)	-3.09 (-3.44, -2.74)	1551 (758, 2798)	24.96 (12.23, 44.92)	-3.35 (-3.72, -2.97)
Austria	28 (13, 53)	1.10 (0.51, 2.05)	-1.30 (-1.67, -0.93)	455 (211, 845)	18.98 (8.90, 35.10)	-1.36 (-1.70, -1.02)

Azerbaijan	10 (4, 20)	0.88 1.83)	(0.37, 3.28 3.55)	(3.00, 213 (88, 447)	17.35 (7.23, 36.03)	3.20 (2.93, 3.46)
Bahamas	1 (0, 2)	1.82 3.45)	(0.85, 0.33 0.78)	(-0.12, 16 (7, 29)	32.94 (15.52, 62.00)	0.15 (-0.35, 0.66)
Bahrain	0 (0, 1)	0.54 1.08)	(0.24, 1.93 2.81)	(1.05, 8 (4, 16)	9.74 (4.39, 19.26)	1.68 (0.62, 2.74)
Bangladesh	27 (11, 57)	0.18 0.37)	(0.07, 3.52 3.86)	(3.18, 512 (202, 1074)	3.12 (1.22, 6.56)	3.56 (3.25, 3.87)
Barbados	1 (0, 2)	1.53 2.79)	(0.70, 1.08 1.43)	(0.73, 18 (8, 33)	26.00 (12.00, 47.18)	0.95 (0.59, 1.31)
Belarus	53 (25, 101)	2.47 4.67)	(1.14, 2.42 2.92)	(1.93, 1091 (512, 2051)	49.46 (23.09, 93.25)	2.32 (1.81, 2.83)
Belgium	45 (21, 82)	1.30 2.37)	(0.62, -1.42 (-1.75, - 1.10)	697 (333, 1267)	21.92 (10.55, 39.80)	-1.63 (-1.94, - 1.32)
Belize	0 (0, 0)	0.60 1.11)	(0.28, 0.82 1.51)	(0.14, 4 (2, 6)	10.72 (5.06, 19.52)	0.76 (0.04, 1.47)
Benin	3 (1, 6)	0.54 1.27)	(0.18, 1.31 1.43)	(1.20, 55 (18, 127)	9.95 (3.28, 23.07)	1.23 (1.10, 1.36)
Bermuda	1 (0, 1)	3.09 5.67)	(1.43, -2.09 (-2.51, - 1.68)	10 (4, 18)	51.43 (24.02, 94.19)	-2.46 (-2.94, - 1.97)
Bhutan	0 (0, 1)	0.48 0.96)	(0.20, 3.24 3.31)	(3.17, 6 (3, 13)	8.91 (3.73, 17.70)	3.09 (3.01, 3.16)
Bolivia (Plurinational State of)	6 (2, 12)	0.58 1.21)	(0.23, 2.11 2.21)	(2.00, 112 (45, 231)	10.39 (4.16, 21.51)	1.97 (1.88, 2.06)
Bosnia and Herzegovina	16 (7, 32)	1.97 3.82)	(0.83, 1.99 2.23)	(1.75, 319 (136, 620)	37.77 (16.11, 73.33)	1.92 (1.68, 2.15)

Botswana	1 (1, 3)	1.18 2.55)	(0.45, 1.88 2.25)	(1.51, 27 (11, 58)	19.10 (7.51, 40.52)	1.73 (1.14, 2.32)
Brazil	719 (364, 1267)	2.34 4.13)	(1.18, 2.10 2.36)	(1.84, 13711 (6997, 23999)	43.69 (22.27, 76.56)	1.87 (1.63, 2.11)
Brunei Darussalam	0 (0, 1)	1.36 2.67)	(0.61, 0.63 0.86)	(0.40, 10 (5, 20)	25.97 (11.85, 50.33)	0.75 (0.54, 0.96)
Bulgaria	33 (16, 63)	1.70 3.23)	(0.82, 1.37 1.95)	(0.78, 645 (311, 1222)	33.65 (16.25, 63.70)	1.72 (1.16, 2.27)
Burkina Faso	3 (1, 8)	0.36 0.83)	(0.12, 1.76 2.05)	(1.46, 66 (22, 153)	6.50 (2.15, 15.11)	1.72 (1.48, 1.96)
Burundi	1 (0, 2)	0.23 0.56)	(0.08, -0.27 (-0.40, - 0.14)	21 (7, 49)	4.16 (1.41, 9.92)	-0.40 (-0.53, - 0.27)
Cabo Verde	1 (0, 1)	1.07 2.49)	(0.37, 3.06 3.51)	(2.62, 10 (3, 22)	18.71 (6.54, 43.40)	2.94 (2.48, 3.41)
Cambodia	1 (0, 3)	0.10 0.22)	(0.03, 2.01 2.07)	(1.95, 23 (8, 50)	1.70 (0.61, 3.75)	1.86 (1.81, 1.92)
Cameroon	18 (7, 38)	1.53 3.26)	(0.59, 2.10 2.18)	(2.02, 359 (140, 773)	27.63 (10.78, 59.30)	2.08 (1.92, 2.24)
Canada	138 (64, 259)	1.33 2.49)	(0.62, -3.19 (-3.44, - 2.94)	2108 (994, 3893)	21.06 (9.97, 38.78)	-3.50 (-3.78, - 3.21)
Central African Republic	1 (0, 2)	0.50 1.15)	(0.18, 0.98 1.06)	(0.90, 22 (8, 49)	9.78 (3.68, 22.41)	1.00 (0.92, 1.08)
Chad	2 (1, 5)	0.35 0.86)	(0.11, 0.92 0.97)	(0.88, 40 (13, 95)	6.52 (2.10, 15.67)	0.92 (0.87, 0.97)
Chile	59 (28, 105)	1.76 3.15)	(0.83, 0.51 0.92)	(0.09, 1019 (491, 1827)	30.72 (14.80, 55.08)	0.40 (0.01, 0.79)

China	319 (154, 576)	0.13 (0.23)	(0.06, 3.47 3.58)	(3.36, 6132 (3003, 11154)	2.30 (1.12, 4.18)	3.50 (3.37, 3.64)
Colombia	132 (63, 238)	1.92 3.45)	(0.91, 1.35 1.89)	(0.81, 2402 (1149, 4259)	34.87 (16.69, 61.82)	1.15 (0.57, 1.73)
Comoros	0 (0, 1)	0.68 1.56)	(0.21, 1.70 1.80)	(1.60, 7 (2, 15)	12.32 (3.73, 28.17)	1.61 (1.50, 1.72)
Congo	3 (1, 7)	1.24 2.63)	(0.50, 1.30 1.39)	(1.22, 68 (28, 140)	24.21 (9.99, 50.68)	1.21 (1.11, 1.30)
Cook Islands	0 (0, 0)	2.10 4.93)	(0.71, 0.92 0.97)	(0.87, 1 (0, 3)	36.67 (12.36, 85.16)	0.77 (0.71, 0.84)
Costa Rica	10 (5, 19)	1.51 2.73)	(0.72, 1.14 1.62)	(0.65, 191 (91, 345)	27.59 (13.19, 49.71)	1.08 (0.59, 1.57)
Croatia	33 (15, 61)	2.66 4.91)	(1.22, 1.23 1.71)	(0.75, 588 (272, 1084)	48.48 (22.46, 89.43)	1.29 (0.59, 2.00)
Cuba	44 (21, 78)	1.70 3.02)	(0.84, 0.39 0.84)	(-0.06, 749 (370, 1329)	30.08 (14.89, 53.37)	0.36 (-0.10, 0.82)
Cyprus	6 (3, 12)	2.32 4.63)	(1.00, -0.77 (-1.13, - 0.40)	104 (46, 205)	38.50 (16.79, 76.37)	-0.75 (-1.07, - 0.44)
Czechia	65 (30, 121)	2.17 4.04)	(1.00, 0.28 0.84)	(-0.27, 1162 (543, 2148)	39.90 (18.60, 73.87)	-0.08 (-0.84, 0.68)
Côte d'Ivoire	10 (3, 23)	0.96 2.35)	(0.32, 1.44 1.55)	(1.34, 197 (66, 475)	17.54 (5.85, 42.51)	1.49 (1.38, 1.61)
Democratic People's Republic of Korea	4 (2, 9)	0.12 0.26)	(0.05, 1.85 1.89)	(1.80, 82 (34, 170)	2.10 (0.86, 4.41)	1.72 (1.67, 1.76)
Democratic Republic of the Congo	24 (8, 53)	0.72 1.60)	(0.25, 1.34 1.43)	(1.25, 504 (179, 1111)	13.52 (4.78, 29.94)	1.30 (1.21, 1.40)

Denmark	46 (21, 86)	2.67 4.97)	(1.25, -0.68 (-1.00, -0.36)	714 (338, 1320)	43.15 (20.51, 79.57)	-1.10 (-1.43, -0.77)
Djibouti	0 (0, 0)	0.35 0.79)	(0.12, 1.20 (1.14, 1.27)	4 (1, 9)	6.39 (2.17, 14.40)	1.17 (1.10, 1.24)
Dominica	0 (0, 1)	3.09 6.06)	(1.33, 1.24 (1.06, 1.41)	6 (2, 11)	53.87 (23.69, 104.32)	1.26 (1.08, 1.44)
Dominican Republic	9 (4, 17)	0.72 1.42)	(0.31, 2.02 (1.64, 2.40)	164 (70, 320)	13.59 (5.78, 26.48)	2.28 (1.85, 2.70)
Ecuador	13 (6, 25)	0.69 1.30)	(0.32, 1.57 (0.82, 2.33)	234 (110, 438)	11.74 (5.54, 22.03)	1.35 (0.61, 2.10)
Egypt	22 (10, 42)	0.35 0.68)	(0.16, 2.77 (2.48, 3.06)	477 (223, 921)	6.68 (3.09, 12.91)	2.82 (2.63, 3.00)
El Salvador	3 (1, 5)	0.34 0.68)	(0.15, 1.25 (0.77, 1.74)	50 (22, 98)	6.48 (2.83, 12.75)	1.42 (0.93, 1.92)
Equatorial Guinea	1 (0, 2)	1.77 3.99)	(0.63, 3.60 (3.44, 3.76)	17 (6, 37)	32.65 (11.57, 73.79)	3.33 (3.18, 3.48)
Eritrea	1 (0, 1)	0.27 0.65)	(0.08, 2.31 (2.23, 2.38)	13 (4, 31)	4.86 (1.52, 11.78)	2.00 (1.92, 2.09)
Estonia	10 (4, 18)	2.49 4.54)	(1.14, 1.25 (0.53, 1.97)	165 (76, 298)	45.59 (21.27, 82.30)	1.01 (0.29, 1.74)
Eswatini	1 (0, 2)	1.76 3.70)	(0.67, 1.26 (1.09, 1.44)	17 (7, 34)	29.94 (11.64, 62.18)	1.40 (1.25, 1.54)
Ethiopia	8 (3, 17)	0.19 0.38)	(0.08, 1.81 (1.72, 1.89)	167 (70, 333)	3.52 (1.45, 7.04)	1.74 (1.66, 1.81)
Fiji	2 (1, 4)	2.75 5.34)	(1.16, 2.21 (1.95, 2.47)	38 (17, 72)	46.39 (20.17, 88.77)	2.04 (1.79, 2.28)

Finland	44 (20, 82)	2.30 4.32)	(1.07, -2.28 (-2.59, - 1.96)	695 (324, 1299)	39.18 (18.40, 72.97)	-2.58 (-2.92, - 2.23)
France	233 (107, 437)	1.08 2.01)	(0.50, -1.09 (-1.31, - 0.87)	3538 (1630, 6567)	18.28 (8.47, 33.79)	-1.17 (-1.42, - 0.92)
Gabon	2 (1, 5)	2.17 4.69)	(0.88, 1.40 (1.31, 1.48)	46 (19, 97)	40.09 (16.55, 85.92)	1.37 (1.24, 1.51)
Gambia	1 (0, 2)	0.92 2.12)	(0.31, 1.74 (1.53, 1.96)	18 (6, 42)	17.28 (5.92, 39.21)	1.69 (1.43, 1.94)
Georgia	14 (6, 25)	1.70 3.11)	(0.80, 6.20 (4.82, 7.58)	273 (129, 495)	33.78 (16.01, 61.26)	6.08 (4.76, 7.41)
Germany	408 (185, 751)	1.45 2.64)	(0.66, -1.36 (-1.57, - 1.15)	6539 (3036, 11890)	25.29 (11.92, 45.61)	-1.32 (-1.53, - 1.12)
Ghana	19 (7, 41)	1.17 2.61)	(0.41, 2.17 (2.10, 2.24)	370 (133, 800)	20.90 (7.43, 45.76)	2.04 (1.97, 2.12)
Greece	78 (37, 143)	2.25 4.17)	(1.08, 0.88 (0.62, 1.14)	1274 (612, 2358)	41.57 (20.03, 76.89)	0.97 (0.65, 1.30)
Greenland	0 (0, 0)	1.06 2.11)	(0.45, -2.42 (-2.75, - 2.10)	2 (1, 3)	18.70 (8.03, 36.53)	-2.45 (-2.76, - 2.13)
Grenada	0 (0, 1)	2.21 4.14)	(1.04, 1.63 (0.78, 2.49)	6 (3, 10)	41.05 (19.71, 75.71)	1.46 (0.84, 2.08)
Guam	0 (0, 0)	0.89 1.75)	(0.38, -3.67 (-4.40, - 2.94)	5 (2, 9)	17.47 (7.69, 33.99)	-3.28 (-3.88, - 2.67)
Guatemala	3 (1, 5)	0.22 0.40)	(0.10, 0.50 (-0.43, 1.44)	53 (25, 99)	4.03 (1.89, 7.49)	0.63 (-0.47, 1.73)
Guinea	3 (1, 7)	0.49 1.20)	(0.15, 1.35 (1.29, 1.41)	58 (18, 138)	9.14 (2.79, 22.04)	1.32 (1.26, 1.38)

Guinea-Bissau	0 (0, 1)	0.70 1.58)	(0.26, 1.20 1.26)	(1.15, 1.20 1.26)	10 (4, 21)	13.16 (4.87, 29.15)	1.13 (1.07, 1.19)
Guyana	1 (1, 2)	1.68 3.21)	(0.75, 3.69 4.97)	(2.42, 3.69 4.97)	25 (11, 47)	32.17 (14.42, 61.00)	3.71 (2.46, 4.96)
Haiti	4 (2, 9)	0.56 1.21)	(0.21, 1.87 1.98)	(1.75, 1.87 1.98)	85 (33, 185)	10.71 (4.14, 23.28)	1.95 (1.87, 2.04)
Honduras	5 (2, 9)	0.67 1.36)	(0.27, 2.67 2.86)	(2.49, 2.67 2.86)	91 (37, 182)	12.29 (4.95, 24.69)	2.60 (2.44, 2.77)
Hungary	70 (33, 122)	2.58 4.49)	(1.22, 0.21 0.60)	(-0.17, 0.21 0.60)	1312 (624, 2276)	49.58 (23.58, 85.98)	0.40 (-0.04, 0.83)
Iceland	1 (1, 3)	1.67 3.11)	(0.74, -1.07 0.81)	(-1.33, -1.07 0.81)	21 (9, 39)	26.75 (12.06, 49.60)	-1.37 (-1.64, - 1.09)
India	316 (148, 580)	0.24 0.44)	(0.11, 4.23 4.52)	(3.94, 4.23 4.52)	6178 (2924, 11360)	4.36 (2.05, 8.01)	4.29 (3.94, 4.63)
Indonesia	55 (26, 98)	0.26 0.46)	(0.12, 3.50 3.56)	(3.45, 3.50 3.56)	1075 (508, 1906)	4.35 (2.01, 7.73)	3.41 (3.37, 3.46)
Iran (Islamic Republic of)	25 (13, 45)	0.30 0.54)	(0.15, 4.11 4.37)	(3.85, 4.11 4.37)	484 (244, 854)	5.44 (2.73, 9.63)	4.04 (3.79, 4.29)
Iraq	6 (3, 13)	0.27 0.52)	(0.12, 1.98 2.14)	(1.83, 1.98 2.14)	137 (60, 264)	5.21 (2.27, 10.08)	1.79 (1.64, 1.94)
Ireland	20 (9, 38)	1.88 3.51)	(0.86, -2.00 1.59)	(-2.41, -2.00 1.59)	309 (143, 573)	29.02 (13.50, 53.78)	-2.32 (-2.80, - 1.84)
Israel	14 (6, 26)	0.82 1.51)	(0.38, -1.34 1.02)	(-1.66, -1.34 1.02)	220 (103, 404)	13.28 (6.20, 24.43)	-1.39 (-1.85, - 0.93)
Italy	252 (119, 463)	1.16 2.12)	(0.55, -1.27 0.96)	(-1.58, -1.27 0.96)	3863 (1856, 7097)	19.59 (9.53, 35.98)	-1.49 (-1.79, - 1.18)

Jamaica	4 (2, 8)	1.02 1.89)	(0.46, 1.76 3.20)	(0.32, 73 (33, 135)	18.81 (8.49, 34.72)	1.87 (0.40, 3.33)
Japan	915 (425, 1620)	1.49 2.61)	(0.71, 1.92 2.23)	(1.60, 12776 (6115, 22367)	24.63 (12.11, 42.79)	1.82 (1.56, 2.08)
Jordan	5 (2, 10)	0.74 1.41)	(0.34, 0.79 1.11)	(0.47, 112 (52, 210)	14.02 (6.47, 26.50)	0.65 (0.44, 0.86)
Kazakhstan	29 (14, 52)	1.48 2.64)	(0.71, 2.54 2.85)	(2.23, 600 (292, 1073)	27.53 (13.33, 49.32)	2.38 (2.04, 2.72)
Kenya	13 (6, 25)	0.59 1.14)	(0.25, 2.54 2.59)	(2.49, 264 (114, 499)	10.74 (4.62, 20.44)	2.59 (2.52, 2.65)
Kiribati	0 (0, 0)	0.21 0.43)	(0.09, 1.89 1.94)	(1.84, 0 (0, 1)	3.89 (1.67, 7.79)	1.70 (1.65, 1.75)
Kuwait	2 (1, 4)	0.76 1.43)	(0.37, 1.80 5.91)	(-2.31, 36 (18, 68)	13.56 (6.63, 25.35)	1.45 (-2.74, 5.64)
Kyrgyzstan	2 (1, 4)	0.46 0.86)	(0.21, 4.43 6.94)	(1.92, 49 (22, 92)	8.76 (4.01, 16.49)	4.90 (1.27, 8.52)
Lao People's Democratic Republic	1 (0, 1)	0.17 0.35)	(0.07, 2.05 2.09)	(2.01, 14 (6, 29)	3.00 (1.27, 5.97)	1.95 (1.91, 1.99)
Latvia	12 (6, 23)	2.23 4.12)	(1.04, 1.84 2.70)	(0.97, 223 (105, 411)	42.46 (20.13, 78.02)	1.96 (1.08, 2.84)
Lebanon	12 (5, 23)	1.52 2.86)	(0.68, 0.77 0.90)	(0.64, 206 (93, 387)	27.37 (12.41, 51.20)	0.45 (0.31, 0.59)
Lesotho	1 (0, 2)	1.02 2.44)	(0.34, 1.83 2.19)	(1.48, 20 (7, 47)	17.31 (5.76, 41.19)	1.93 (1.67, 2.19)
Liberia	2 (1, 4)	0.97 2.33)	(0.31, 1.12 1.34)	(0.90, 38 (12, 90)	18.11 (5.81, 43.10)	1.01 (0.83, 1.20)

Libya	1 (0, 3)	0.26 0.55)	(0.09, 5.71 6.00)	(5.42, 26 (10, 56)	4.85 (1.78, 10.38)	5.70 (5.41, 5.98)
Lithuania	19 (9, 34)	2.35 4.26)	(1.10, 2.23 3.00)	(1.46, 338 (160, 612)	44.70 (21.16, 80.64)	2.17 (1.11, 3.23)
Luxembourg	2 (1, 4)	1.50 2.81)	(0.69, -1.39 (-1.83, - 0.95)	35 (16, 65)	25.32 (11.71, 47.12)	-1.59 (-2.04, - 1.15)
Madagascar	5 (2, 11)	0.54 1.23)	(0.19, 1.56 1.73)	(1.39, 108 (38, 240)	9.95 (3.47, 22.26)	1.49 (1.32, 1.65)
Malawi	4 (1, 9)	0.57 1.30)	(0.19, 2.92 3.02)	(2.82, 82 (28, 184)	10.40 (3.48, 23.50)	2.89 (2.79, 2.98)
Malaysia	51 (24, 95)	1.68 3.15)	(0.77, 2.60 3.27)	(1.92, 939 (445, 1744)	28.45 (13.33, 52.98)	2.26 (1.82, 2.70)
Maldives	0 (0, 0)	0.15 0.33)	(0.05, 1.62 1.85)	(1.39, 1 (0, 2)	2.74 (0.93, 6.30)	1.31 (1.10, 1.53)
Mali	3 (1, 6)	0.30 0.71)	(0.10, 0.51 0.58)	(0.44, 50 (17, 118)	5.35 (1.80, 12.68)	0.42 (0.33, 0.50)
Malta	1 (0, 2)	0.72 1.36)	(0.33, -1.41 (-1.82, - 1.01)	17 (8, 33)	12.63 (5.79, 23.94)	-1.52 (-1.96, - 1.08)
Marshall Islands	0 (0, 0)	1.62 3.50)	(0.62, 1.01 1.09)	(0.94, 1 (0, 2)	28.04 (10.93, 59.73)	0.96 (0.84, 1.08)
Mauritania	3 (1, 8)	1.51 3.66)	(0.47, 1.07 1.19)	(0.94, 60 (19, 147)	25.34 (7.94, 61.69)	0.85 (0.72, 0.97)
Mauritius	1 (0, 1)	0.36 0.67)	(0.17, 0.05 1.00)	(-0.90, 15 (7, 27)	6.23 (3.00, 11.43)	-0.20 (-1.28, 0.88)
Mexico	60 (29, 107)	0.41 0.73)	(0.20, 0.84 1.37)	(0.31, 1122 (549, 1992)	7.37 (3.60, 13.08)	0.88 (0.40, 1.36)

Micronesia (Federated States of)	0 (0, 0)	1.78 3.65)	(0.73, 0.66 0.71)	(0.61, 3 (1, 5)	31.44 (13.19, 63.39)	0.63 (0.59, 0.66)
Monaco	1 (0, 1)	3.43 6.93)	(1.44, -0.03 0.03)	(-0.10, 8 (3, 15)	55.42 (23.76, 111.34)	-0.20 (-0.26, - 0.13)
Mongolia	1 (0, 1)	0.35 0.69)	(0.17, 3.42 3.82)	(3.01, 16 (8, 31)	6.69 (3.22, 12.84)	3.18 (2.85, 3.52)
Montenegro	9 (4, 18)	7.54 14.70)	(3.23, 1.43 1.81)	(1.06, 177 (76, 341)	135.21 (58.34, 261.54)	1.35 (1.06, 1.65)
Morocco	9 (4, 17)	0.23 0.45)	(0.10, 5.73 5.88)	(5.58, 177 (78, 351)	4.30 (1.89, 8.50)	5.69 (5.53, 5.86)
Mozambique	6 (2, 15)	0.56 1.33)	(0.18, 2.62 2.74)	(2.50, 133 (43, 313)	10.92 (3.51, 25.94)	2.66 (2.54, 2.79)
Myanmar	8 (4, 17)	0.16 0.33)	(0.07, 1.74 1.77)	(1.70, 164 (75, 326)	2.91 (1.31, 5.82)	1.62 (1.58, 1.66)
Namibia	2 (1, 4)	1.35 2.89)	(0.54, 2.19 2.29)	(2.09, 31 (12, 65)	22.09 (8.90, 46.93)	2.08 (1.98, 2.19)
Nauru	0 (0, 0)	4.09 9.08)	(1.46, 1.78 1.86)	(1.69, 0 (0, 1)	72.64 (27.76, 155.26)	1.30 (1.23, 1.38)
Nepal	4 (2, 8)	0.15 0.32)	(0.06, 3.92 4.02)	(3.81, 84 (35, 172)	2.93 (1.23, 6.05)	3.86 (3.75, 3.96)
Netherlands	107 (48, 196)	2.11 3.89)	(0.96, -1.30 (-1.57, - 1.03)	1598 (733, 2924)	32.64 (15.02, 59.68)	-1.75 (-2.02, - 1.47)
New Zealand	30 (15, 53)	2.58 4.55)	(1.25, -2.83 (-3.25, - 2.41)	482 (236, 844)	42.31 (20.77, 74.05)	-3.11 (-3.54, - 2.68)
Nicaragua	1 (1, 3)	0.23 0.46)	(0.10, 1.27 1.63)	(0.92, 25 (11, 50)	4.35 (1.89, 8.69)	1.20 (0.91, 1.48)

Niger	2 (1, 6)	0.29 (0.78)	(0.08, 0.30 0.41)	(0.18, 45 (13, 123)	5.16 (1.43, 14.01)	0.28 (0.16, 0.39)
Nigeria	104 (37, 227)	1.27 (2.77)	(0.46, 2.12 2.23)	(2.02, 1908 (667, 4199)	21.27 (7.52, 46.69)	2.08 (1.97, 2.18)
Niue	0 (0, 0)	2.19 (4.37)	(0.91, 1.11 1.16)	(1.06, 0 (0, 0)	37.68 (15.73, 74.60)	1.05 (1.00, 1.11)
North Macedonia	7 (3, 15)	1.89 (3.81)	(0.78, 1.62 1.89)	(1.36, 144 (59, 295)	33.52 (13.79, 68.31)	1.56 (1.30, 1.82)
Northern Mariana Islands	0 (0, 0)	2.36 (4.96)	(0.94, -0.08 0.45)	(-0.61, 2 (1, 5)	39.92 (16.15, 82.22)	-0.07 (-0.28, 0.15)
Norway	39 (19, 69)	2.68 (4.79)	(1.30, -1.33 1.05)	(-1.61, - 594 (291, 1065)	43.22 (21.20, 77.50)	-1.69 (-1.99, - 1.39)
Oman	1 (0, 2)	0.40 (0.93)	(0.14, 7.68 8.04)	(7.32, 16 (5, 40)	8.19 (2.81, 19.36)	7.63 (7.25, 8.00)
Pakistan	58 (27, 110)	0.49 (0.93)	(0.22, 3.63 3.72)	(3.55, 1172 (541, 2223)	9.05 (4.16, 17.15)	3.65 (3.58, 3.72)
Palau	0 (0, 0)	1.96 (4.05)	(0.83, 1.01 1.10)	(0.92, 1 (0, 2)	32.70 (14.12, 66.54)	0.81 (0.74, 0.89)
Palestine	1 (1, 2)	0.52 (1.02)	(0.24, 2.06 2.33)	(1.80, 26 (12, 51)	9.63 (4.45, 18.81)	1.98 (1.80, 2.17)
Panama	8 (4, 15)	1.46 (2.71)	(0.65, 0.48 0.83)	(0.12, 145 (65, 268)	26.49 (11.79, 48.88)	0.39 (-0.04, 0.83)
Papua New Guinea	1 (1, 3)	0.31 (0.63)	(0.12, 0.81 0.90)	(0.73, 31 (13, 64)	5.99 (2.38, 12.15)	0.86 (0.77, 0.95)
Paraguay	12 (5, 23)	1.73 (3.37)	(0.74, 2.52 2.85)	(2.19, 234 (101, 456)	33.07 (14.22, 64.42)	2.49 (2.25, 2.74)

Peru	12 (5, 24)	0.30 (0.60)	(0.13, 1.39 1.90)	(0.87, 2.21)	(94, 427)	5.43 (2.31, 10.52)	1.17 (0.58, 1.75)
Philippines	28 (14, 49)	0.33 (0.59)	(0.16, 1.82 1.95)	(1.69, 2.21)	(272, 958)	5.94 (2.96, 10.50)	1.99 (1.86, 2.12)
Poland	220 (106, 394)	2.21 (3.97)	(1.07, -0.59 0.10)	(-1.07, -0.10)	3973 (1934, 7084)	40.22 (19.61, 71.73)	-0.70 (-1.14, -0.27)
Portugal	28 (14, 51)	0.80 (1.45)	(0.39, 0.43 0.90)	(-0.04, 0.43)	472 (231, 856)	14.71 (7.23, 26.68)	0.55 (0.08, 1.01)
Puerto Rico	7 (3, 13)	0.66 (1.21)	(0.31, -1.87 1.23)	(-2.51, -1.23)	115 (54, 209)	11.52 (5.49, 20.87)	-1.85 (-2.47, -1.24)
Qatar	1 (0, 1)	0.88 (1.93)	(0.35, 0.00 1.08)	(-1.08, 0.00)	12 (4, 27)	16.42 (6.39, 36.92)	-0.00 (-1.11, 1.10)
Republic of Korea	59 (26, 112)	0.50 (0.95)	(0.22, 0.86 1.05)	(0.67, 0.86)	931 (414, 1755)	7.68 (3.40, 14.50)	0.55 (0.38, 0.71)
Republic of Moldova	10 (5, 17)	1.25 (2.20)	(0.59, 2.94 3.66)	(2.21, 2.94)	203 (97, 355)	25.14 (11.94, 43.93)	3.13 (2.17, 4.11)
Romania	68 (32, 123)	1.32 (2.40)	(0.63, 1.77 2.20)	(1.34, 1.77)	1301 (620, 2336)	25.95 (12.45, 46.52)	1.97 (1.45, 2.49)
Russian Federation	964 (482, 1668)	3.03 (5.23)	(1.51, 2.66 3.91)	(1.41, 2.66)	18401 (9261, 31782)	56.33 (28.33, 97.21)	3.01 (1.76, 4.27)
Rwanda	2 (1, 5)	0.39 (0.85)	(0.15, 0.42 0.62)	(0.21, 0.42)	47 (18, 101)	6.97 (2.66, 15.06)	0.26 (0.04, 0.49)
Saint Kitts and Nevis	0 (0, 0)	1.50 (2.83)	(0.69, 0.58 1.20)	(-0.03, 0.58)	2 (1, 4)	27.05 (12.49, 50.55)	0.33 (-0.49, 1.16)
Saint Lucia	1 (0, 1)	2.40 (4.60)	(1.10, -1.52 0.78)	(-2.25, -0.78)	12 (5, 22)	39.88 (18.34, 75.51)	-1.54 (-2.23, -0.85)

Saint Vincent and the Grenadines	0 (0, 0)	0.83 1.52)	(0.39, 0.83 1.21)	(0.44, 0.83 1.21)	3 (1, 5)	14.49 (6.81, 26.39)	0.75 (0.39, 1.12)
Samoa	0 (0, 1)	1.80 3.81)	(0.74, 0.57 0.62)	(0.51, 0.57 0.62)	5 (2, 11)	32.55 (13.84, 66.86)	0.52 (0.43, 0.61)
San Marino	0 (0, 0)	1.09 2.37)	(0.41, -1.48 (-1.98, - 0.97)	(-1.98, -0.97)	2 (1, 4)	18.80 (6.98, 41.17)	-1.49 (-1.94, - 1.04)
Sao Tome and Principe	0 (0, 0)	1.16 2.74)	(0.38, 2.25 2.38)	(2.13, 2.25 2.38)	2 (1, 5)	20.49 (6.95, 47.55)	2.27 (2.16, 2.38)
Saudi Arabia	2 (1, 5)	0.16 0.33)	(0.07, 5.09 5.29)	(4.89, 5.09 5.29)	50 (23, 97)	3.02 (1.36, 5.91)	5.05 (4.81, 5.30)
Senegal	6 (2, 15)	0.82 1.92)	(0.27, 1.07 1.34)	(0.81, 1.07 1.34)	122 (41, 286)	14.40 (4.79, 33.70)	0.93 (0.66, 1.19)
Serbia	71 (33, 130)	3.10 5.70)	(1.45, 0.81 1.04)	(0.59, 0.81 1.04)	1321 (624, 2411)	58.10 (27.47, 106.09)	0.89 (0.61, 1.16)
Seychelles	0 (0, 0)	0.53 1.11)	(0.22, 1.66 2.23)	(1.08, 1.66 2.23)	1 (1, 3)	9.23 (3.81, 19.20)	1.41 (0.92, 1.90)
Sierra Leone	3 (1, 6)	0.67 1.59)	(0.23, 0.51 0.58)	(0.43, 0.51 0.58)	50 (17, 118)	12.26 (4.17, 29.05)	0.55 (0.48, 0.63)
Singapore	7 (3, 13)	0.67 1.21)	(0.31, 0.44 1.08)	(-0.20, 0.44 1.08)	123 (59, 219)	11.32 (5.38, 20.20)	-0.02 (-0.73, 0.69)
Slovakia	22 (10, 42)	1.74 3.31)	(0.77, 0.25 0.42)	(0.08, 0.25 0.42)	434 (192, 822)	33.54 (14.82, 63.63)	0.24 (0.04, 0.44)
Slovenia	11 (5, 22)	1.80 3.41)	(0.82, -0.32 (-0.83, 0.19)	(-0.83, 0.19)	192 (88, 361)	32.05 (14.72, 60.14)	-0.28 (-0.91, 0.35)
Solomon Islands	0 (0, 0)	0.62 1.33)	(0.25, 1.61 1.73)	(1.49, 1.61 1.73)	3 (1, 7)	10.60 (4.26, 22.21)	1.50 (1.35, 1.64)

Somalia	1 (0, 2)	0.17 0.46)	(0.05, 0.40 0.48)	(0.32, 20 (6, 54)	3.17 (0.97, 8.66)	0.43 (0.35, 0.51)
South Africa	78 (39, 140)	1.63 2.92)	(0.79, 0.09 0.36)	(-0.19, 1453 (721, 2582)	27.72 (13.67, 49.41)	0.10 (-0.15, 0.35)
South Sudan	1 (0, 2)	0.20 0.46)	(0.07, 0.20 0.27)	(0.12, 14 (5, 33)	3.73 (1.26, 8.68)	0.20 (0.11, 0.29)
Spain	191 (89, 350)	1.39 2.55)	(0.65, 0.09 0.33)	(-0.17, 3176 (1494, 5836)	25.41 (11.99, 46.72)	0.15 (-0.13, 0.44)
Sri Lanka	3 (1, 6)	0.10 0.21)	(0.04, 2.36 2.72)	(2.00, 56 (24, 116)	1.66 (0.70, 3.42)	2.33 (1.95, 2.71)
Sudan	4 (2, 8)	0.20 0.40)	(0.08, 6.20 6.36)	(6.04, 78 (31, 159)	3.73 (1.48, 7.60)	6.10 (5.94, 6.26)
Suriname	1 (0, 1)	0.75 1.52)	(0.32, 0.72 1.17)	(0.28, 11 (5, 22)	14.29 (6.06, 28.81)	0.56 (0.11, 1.00)
Sweden	74 (34, 137)	2.26 4.17)	(1.05, -1.81 (-2.13, - 1.50)	1105 (519, 2036)	35.97 (17.00, 66.22)	-2.08 (-2.41, - 1.74)
Switzerland	31 (14, 58)	1.13 2.12)	(0.53, -2.03 (-2.51, - 1.55)	450 (213, 843)	17.91 (8.54, 33.46)	-2.47 (-2.89, - 2.04)
Syrian Arab Republic	5 (2, 9)	0.33 0.66)	(0.14, 2.52 2.66)	(2.38, 99 (43, 195)	6.25 (2.70, 12.49)	2.45 (2.31, 2.60)
Taiwan	44 (21, 79)	0.78 1.42)	(0.38, 3.45 4.04)	(2.85, 785 (385, 1424)	13.92 (6.84, 25.26)	3.22 (2.65, 3.79)
Tajikistan	1 (0, 1)	0.13 0.25)	(0.06, 0.50 0.85)	(0.15, 15 (7, 30)	2.44 (1.11, 4.76)	0.47 (0.17, 0.77)
Thailand	71 (31, 137)	0.52 1.00)	(0.22, 2.43 2.66)	(2.20, 1173 (510, 2223)	8.48 (3.68, 16.08)	2.52 (2.29, 2.76)

Timor-Leste	0 (0, 0)	0.08 0.18)	(0.03, 2.24 2.32)	(2.17, 2 (1, 3)	1.48 (0.61, 3.13)	2.29 (2.20, 2.37)
Togo	3 (1, 7)	0.93 2.22)	(0.31, 1.55 1.62)	(1.47, 64 (21, 150)	16.74 (5.59, 39.59)	1.48 (1.40, 1.55)
Tokelau	0 (0, 0)	2.09 4.47)	(0.78, 1.82 1.94)	(1.71, 0 (0, 0)	35.49 (13.58, 74.02)	1.52 (1.34, 1.71)
Tonga	0 (0, 0)	2.33 4.72)	(0.96, 1.90 2.08)	(1.72, 4 (2, 8)	42.71 (17.93, 85.62)	1.77 (1.57, 1.96)
Trinidad and Tobago	6 (3, 12)	2.60 4.91)	(1.16, 0.29 0.73)	(-0.16, 120 (54, 224)	47.17 (21.18, 88.32)	0.27 (-0.17, 0.72)
Tunisia	3 (1, 7)	0.23 0.46)	(0.09, 5.55 5.70)	(5.41, 65 (26, 132)	3.96 (1.60, 8.09)	5.30 (5.17, 5.43)
Turkmenistan	4 (2, 9)	1.04 2.00)	(0.47, 2.69 3.14)	(2.24, 97 (44, 188)	20.60 (9.39, 39.82)	2.60 (2.14, 3.07)
Tuvalu	0 (0, 0)	1.68 3.52)	(0.70, 1.82 1.86)	(1.78, 0 (0, 1)	29.39 (12.43, 60.82)	1.66 (1.63, 1.70)
Türkiye	170 (81, 322)	1.49 2.82)	(0.70, 1.85 2.13)	(1.56, 3421 (1627, 6473)	28.85 (13.70, 54.59)	1.66 (1.46, 1.87)
Uganda	5 (2, 11)	0.35 0.75)	(0.14, 1.15 1.26)	(1.04, 100 (39, 213)	6.46 (2.53, 13.82)	1.14 (1.02, 1.25)
Ukraine	160 (72, 302)	1.52 2.87)	(0.69, 1.20 1.86)	(0.55, 3274 (1484, 6188)	30.91 (14.03, 58.35)	1.22 (0.75, 1.69)
United Arab Emirates	3 (1, 5)	1.33 2.55)	(0.56, 2.70 3.97)	(1.43, 60 (27, 112)	24.84 (10.72, 47.07)	2.67 (1.50, 3.85)
United Kingdom	505 (252, 890)	2.63 4.62)	(1.32, -3.36 (-3.53, - 3.19)	7409 (3759, 12956)	40.78 (20.80, 71.08)	-3.72 (-3.91, - 3.52)

United Republic of Tanzania	21 (8, 48)	0.83 1.87)	(0.30, 2.27 2.33)	(2.22, 418 (153, 946)	15.26 (5.59, 34.46)	2.29 (2.24, 2.35)
United States Virgin Islands	0 (0, 1)	1.36 2.70)	(0.57, -1.08 (-1.57, - 0.60)	6 (2, 11)	22.57 (9.63, 44.93)	-1.21 (-1.87, - 0.55)
United States of America	1067 (515, 1904)	1.32 2.35)	(0.64, -2.77 (-2.99, - 2.55)	17783 (8910, 31319)	22.33 (11.22, 39.26)	-2.97 (-3.21, - 2.73)
Uruguay	20 (9, 38)	2.66 4.93)	(1.24, -0.10 (-0.46, 0.26)	358 (168, 659)	49.61 (23.50, 91.07)	-0.21 (-0.63, 0.20)
Uzbekistan	16 (8, 30)	0.61 1.17)	(0.29, 6.65 (6.04, 7.27)	322 (158, 609)	11.20 (5.41, 21.21)	6.42 (5.68, 7.15)
Vanuatu	0 (0, 0)	1.00 2.14)	(0.38, 1.04 (0.95, 1.14)	3 (1, 6)	17.22 (6.70, 36.40)	1.02 (0.89, 1.16)
Venezuela (Bolivarian Republic of)	50 (22, 96)	1.43 2.73)	(0.62, 0.49 (-0.14, 1.12)	936 (416, 1773)	25.41 (11.26, 48.27)	0.27 (-0.27, 0.80)
Viet Nam	16 (6, 33)	0.16 0.32)	(0.06, 3.79 (3.74, 3.85)	291 (118, 595)	2.63 (1.05, 5.36)	3.84 (3.77, 3.90)
Yemen	2 (1, 4)	0.12 0.26)	(0.04, 6.58 (6.36, 6.80)	37 (13, 77)	2.35 (0.83, 4.96)	6.53 (6.31, 6.75)
Zambia	6 (2, 14)	0.92 2.13)	(0.30, 3.49 (3.31, 3.68)	132 (41, 310)	18.20 (5.74, 42.45)	3.71 (3.51, 3.91)
Zimbabwe	12 (5, 25)	1.84 3.91)	(0.74, 3.33 (3.13, 3.53)	245 (102, 519)	33.52 (13.75, 71.21)	3.42 (3.24, 3.61)

Note: Abbreviations: BMI, body mass index; DALYs, Disability-Adjusted Life Years; AAPC, average annual percentage change.

**Supplementary Table SIII.** The number of death cases and the ASDR of aortic aneurysm attributable to high SBP in adults aged  $\geq 60$  years, 1990 and 2021, with temporal trends in global and 21 GBD regions from 1990 to 2021

Location	1990		2021		1990–2021
	Number of cases (95%UI)	ASDR/100000(95% UI)	Number of cases (95%UI)	ASDR/100000(95% UI)	AAPC (95%CI)
Global	15909 (11956, 20023)	3.77 (2.82, 4.76)	23131 (16746, 30145)	2.24 (1.61, 2.92)	-1.67 (-1.80, -1.54)
Andean Latin America	13 (7, 21)	0.59 (0.31, 0.95)	59 (35, 93)	0.85 (0.51, 1.32)	1.28 (1.00, 1.55)
Australasia	365 (260, 482)	12.06 (8.54, 15.99)	219 (138, 317)	2.84 (1.80, 4.10)	-4.59 (-4.89, -4.29)
Caribbean	122 (80, 170)	4.01 (2.63, 5.62)	194 (125, 281)	2.86 (1.85, 4.13)	-1.13 (-1.41, -0.86)
Central Asia	61 (41, 87)	1.13 (0.76, 1.62)	235 (166, 314)	2.78 (1.95, 3.73)	3.01 (2.68, 3.34)
Central Europe	840 (610, 1090)	4.65 (3.36, 6.06)	1210 (871, 1602)	3.94 (2.84, 5.21)	-0.69 (-1.11, -0.27)
Central Latin America	162 (111, 225)	1.84 (1.25, 2.55)	559 (388, 774)	1.89 (1.31, 2.62)	0.07 (-0.27, 0.41)
Central Sub-Saharan Africa	72 (35, 136)	3.65 (1.72, 6.88)	140 (67, 252)	2.97 (1.41, 5.37)	-0.66 (-0.76, -0.56)
East Asia	224 (120, 364)	0.27 (0.15, 0.45)	1157 (626, 1857)	0.45 (0.24, 0.72)	1.58 (1.36, 1.79)
Eastern Europe	1096 (820, 1386)	3.16 (2.35, 4.00)	2293 (1682, 2948)	4.87 (3.57, 6.26)	1.54 (0.27, 2.82)
Eastern Sub-Saharan Africa	114 (63, 203)	1.65 (0.92, 2.92)	317 (160, 543)	2.00 (1.01, 3.44)	0.62 (0.56, 0.69)
High-income Asia Pacific	1052 (787, 1320)	4.44 (3.30, 5.58)	4040 (2319, 6294)	5.21 (3.07, 7.92)	0.46 (0.25, 0.67)
High-income North America	3486 (2541, 4505)	7.28 (5.30, 9.42)	1812 (1073, 2741)	1.97 (1.17, 2.97)	-4.18 (-4.42, -3.95)
North Africa and Middle East	112 (66, 178)	0.64 (0.38, 1.02)	450 (293, 653)	0.96 (0.62, 1.40)	1.32 (1.03, 1.61)

Oceania	4 (2, 5)	1.57 (0.93, 2.46)	10 (6, 16)	1.65 (0.98, 2.58)	0.19 (0.06, 0.31)
South Asia	411 (221, 701)	0.75 (0.41, 1.28)	2162 (1385, 3300)	1.38 (0.88, 2.10)	2.02 (1.68, 2.36)
Southeast Asia	285 (188, 404)	1.23 (0.81, 1.77)	1224 (859, 1666)	1.92 (1.34, 2.63)	1.41 (1.32, 1.50)
Southern Latin America	251 (143, 382)	4.52 (2.59, 6.87)	382 (248, 543)	3.32 (2.15, 4.71)	-0.87 (-1.15, -0.59)
Southern Africa	Sub-Saharan 119 (75, 175)	4.41 (2.76, 6.52)	198 (132, 279)	3.44 (2.28, 4.90)	-0.70 (-0.92, -0.48)
Tropical Latin America	359 (251, 479)	3.63 (2.53, 4.85)	1427 (1017, 1873)	4.58 (3.25, 6.01)	0.81 (0.56, 1.06)
Western Europe	6538 (4939, 8191)	8.29 (6.25, 10.39)	4464 (3183, 5876)	3.18 (2.28, 4.17)	-3.05 (-3.18, -2.92)
Western Sub-Saharan Africa	223 (109, 418)	2.61 (1.28, 4.88)	578 (268, 1068)	3.26 (1.51, 6.02)	0.79 (0.63, 0.95)

Note: Abbreviations: SBP, systolic blood pressure; ASDR, age-standardized death rate; AAPC, average annual percentage change.

**Supplementary Table SIV.** The number of DALYs cases and age-standardized DALY rates of aortic aneurysm attributable to high SBP in adults aged  $\geq$  60 years, 1990 and 2021, with temporal trends in global and 21 GBD regions from 1990 to 2021

Location	1990		2021		AAPC (95%CI)
	Number of cases (95%UI)	Age-standardized DALYs rate/100000(95% UI)	Number of cases (95%UI)	Age-standardized DALYs rate /100000(95% UI)	
Global	280119 (211044, 351617)	61.56 (46.25, 77.46)	385281 (281872, 495327)	36.17 (26.41, 46.61)	-1.70 (-1.85, - 1.55)
Andean America	Latin 231 (122, 374)	10.04 (5.31, 16.29)	980 (581, 1533)	13.83 (8.21, 21.62)	1.05 (0.78, 1.32)
Australasia	6350 (4566, 8310)	204.45 (146.60, 268.26)	3274 (2098, 4695)	44.18 (28.40, 63.20)	-4.84 (-5.14, - 4.53)
Caribbean	2135 (1417, 2970)	67.62 (44.81, 94.20)	3309 (2167, 4738)	49.04 (32.16, 70.19)	-0.97 (-1.29, - 0.66)
Central Asia	1235 (844, 1748)	21.90 (14.91, 31.04)	4574 (3255, 6038)	49.55 (35.07, 65.82)	2.73 (2.41, 3.06)
Central Europe	15963 (11669, 20573)	83.44 (60.81, 107.87)	21757 (15775, 28642)	71.68 (52.01, 94.27)	-0.49 (-0.81, - 0.17)
Central America	Latin 3059 (2088, 4227)	32.82 (22.37, 45.41)	9899 (6911, 13672)	32.72 (22.84, 45.21)	-0.05 (-0.38, 0.29)
Central Africa	Sub-Saharan 1519 (730, 2863)	65.98 (31.43, 124.38)	2853 (1376, 5151)	53.54 (25.66, 96.80)	-0.67 (-0.77, - 0.57)
East Asia	4438 (2373, 7218)	4.67 (2.49, 7.61)	21182 (11377, 34048)	7.78 (4.19, 12.52)	1.62 (1.42, 1.82)

Eastern Europe	22151 27919)	(16584,	60.53 (45.22, 76.49)	43461 55728)	(31923,	90.61 (66.52, 116.14)	1.44 2.42)	(0.47,
Eastern Sub-Saharan Africa	2275 (1251, 4068)		29.08 (16.06, 51.71)	6243 10699)	(3135,	35.80 (18.01, 61.42)	0.66 0.73)	(0.59,
High-income Pacific	18186 22748)	(13694,	73.54 (55.20, 92.11)	55361 83817)	(32779,	80.42 (48.66, 119.42)	0.23 0.44)	(0.02,
High-income America	59027 75756)	(43314,	123.97 (90.89, 159.19)	27459 40795)	(16606,	30.47 (18.48, 45.14)	-4.47 4.24)	(-4.70, -
North Africa and Middle East	2323 (1372, 3735)		12.14 (7.19, 19.42)	8796 12752)	(5749,	17.43 (11.36, 25.28)	1.22 1.43)	(1.02,
Oceania	71 (42, 112)		25.83 (15.37, 40.52)	200 (120, 311)		27.94 (16.65, 43.52)	0.24 0.36)	(0.12,
South Asia	8175 14059)	(4374,	13.50 (7.26, 23.08)	40429 61806)	(25840,	23.79 (15.22, 36.34)	1.98 2.31)	(1.65,
Southeast Asia	5085 (3385, 7182)		19.83 (13.12, 28.16)	21156 28640)	(14945,	30.28 (21.30, 41.14)	1.35 1.44)	(1.26,
Southern America	4542 (2567, 6992)		78.43 (44.41, 120.44)	6541 (4251, 9224)		57.48 (37.36, 81.06)	-0.88 0.58)	(-1.18, -
Southern Saharan Africa	2075 (1330, 3027)		70.98 (45.13, 104.03)	3646 (2441, 5100)		57.64 (38.43, 81.16)	-0.66 0.47)	(-0.86, -
Tropical America	7221 (5033, 9628)		67.97 (47.39, 90.70)	26371 34384)	(18992,	82.65 (59.44, 107.86)	0.70 0.95)	(0.46,
Western Europe	109894 136983)	(83413,	140.56 (106.57, 175.26)	67084 87765)	(48194,	51.94 (37.45, 67.76)	-3.16 3.02)	(-3.30, -
Western Sub-Saharan Africa	4165 (2027, 7813)		44.25 (21.57, 82.81)	10708 19832)	(4927,	54.77 (25.28, 101.30)	0.76 0.91)	(0.61,

Note: Abbreviations: SBP, systolic blood pressure; DALYs, disability-adjusted life-years; AAPC, average annual percentage change.

**Supplementary Table SV.** The number of death/DALYs cases and age-standardized death/DALYs rates of aortic aneurysm attributable to high SBP in adults aged  $\geq 60$  years, 1990 and 2021, with temporal trends in 204 countries and territories from 1990 to 2021.

Countries	Number of death cases (95%UI)	ASDR/100000(95% UI)	AAPC	Number of DALYs cases (95%UI)	Age-standardized rate/100000(95% UI)	DALYs AAPC
Afghanistan	2 (1, 4)	0.27 (0.11, 0.53)	4.36 (4.16, 4.57)	43 (18, 84)	5.25 (2.12, 10.19)	4.37 (4.19, 4.55)
Albania	9 (4, 16)	1.60 (0.76, 2.87)	0.61 (0.25, 0.96)	160 (75, 294)	27.26 (12.78, 49.92)	0.46 (0.15, 0.77)
Algeria	15 (7, 28)	0.46 (0.21, 0.85)	3.08 (2.84, 3.31)	267 (122, 482)	7.09 (3.21, 12.91)	2.88 (2.73, 3.03)
American Samoa	0 (0, 0)	3.24 (1.45, 5.85)	0.13 (-0.30, 0.55)	3 (1, 5)	52.89 (24.75, 93.60)	-0.05 (-0.45, 0.35)
Andorra	1 (0, 2)	5.35 (2.29, 10.46)	-2.21 (-2.66, -1.75)	17 (7, 33)	84.95 (36.18, 166.81)	-2.31 (-2.78, -1.83)
Angola	38 (16, 74)	3.85 (1.57, 7.53)	0.45 (0.30, 0.59)	783 (324, 1516)	69.31 (28.57, 134.92)	0.35 (0.21, 0.50)
Antigua and Barbuda	0 (0, 0)	2.38 (1.20, 3.94)	-1.06 (-2.14, 0.02)	5 (3, 9)	40.76 (20.57, 67.49)	-1.40 (-2.43, -0.37)
Argentina	234 (131, 366)	3.17 (1.77, 4.96)	-0.91 (-1.41, -0.40)	4107 (2319, 6369)	56.23 (31.76, 87.24)	-0.95 (-1.49, -0.40)
Armenia	70 (40, 108)	12.39 (6.97, 19.40)	2.98 (2.44, 3.52)	1278 (763, 1922)	220.15 (129.06, 334.44)	2.76 (2.27, 3.24)
Australia	166 (99, 251)	2.55 (1.53, 3.83)	-4.78 (-5.09, -4.46)	2483 (1502, 3715)	39.62 (24.03, 59.09)	-5.03 (-5.36, -4.69)
Austria	63 (32, 104)	2.42 (1.22, 3.95)	-1.95 (-2.31, -1.59)	992 (504, 1612)	40.81 (20.87, 65.93)	-2.04 (-2.44, -1.65)

Azerbaijan	19 (8, 35)	1.78 3.27)	(0.81, 2.80 (2.53, 3.07)	385 (167, 735)	33.03 (14.82, 61.49)	2.70 (2.44, 2.97)
Bahamas	1 (1, 2)	3.34 5.65)	(1.65, -0.76 (-1.27, -0.24)	27 (13, 45)	57.55 (28.66, 97.13)	-0.90 (-1.43, -0.37)
Bahrain	1 (0, 1)	0.86 1.56)	(0.40, 0.37 (-0.51, 1.25)	12 (5, 22)	14.77 (6.80, 27.18)	0.19 (-0.79, 1.16)
Bangladesh	217 (100, 425)	1.44 2.84)	(0.66, 2.18 (1.84, 2.52)	3795 (1749, 7420)	23.64 (10.85, 46.36)	2.01 (1.74, 2.28)
Barbados	2 (1, 3)	3.06 4.76)	(1.80, 0.36 (0.00, 0.72)	34 (20, 53)	49.72 (28.99, 77.73)	0.25 (-0.11, 0.60)
Belarus	105 (61, 160)	4.86 7.47)	(2.82, 1.44 (0.95, 1.93)	2090 (1252, 3141)	95.24 (56.76, 143.72)	1.36 (0.83, 1.89)
Belgium	109 (66, 160)	3.12 4.58)	(1.91, -2.33 (-2.59, -2.07)	1645 (1011, 2409)	51.10 (31.53, 74.61)	-2.42 (-2.71, -2.12)
Belize	0 (0, 1)	1.02 1.64)	(0.54, -0.03 (-0.72, 0.65)	6 (3, 9)	17.45 (9.27, 27.95)	0.12 (-0.57, 0.81)
Benin	10 (3, 23)	2.14 4.68)	(0.70, 0.46 (0.35, 0.56)	193 (66, 415)	36.39 (12.24, 78.78)	0.42 (0.32, 0.52)
Bermuda	1 (1, 2)	5.03 8.13)	(2.62, -3.20 (-3.61, -2.79)	15 (8, 25)	81.12 (42.26, 130.90)	-3.32 (-3.77, -2.86)
Bhutan	1 (0, 2)	1.65 3.16)	(0.70, 2.23 (2.16, 2.31)	19 (9, 37)	27.51 (12.06, 52.06)	2.08 (1.99, 2.16)
Bolivia (Plurinational State of)	11 (4, 23)	1.21 2.42)	(0.47, 1.35 (1.17, 1.54)	201 (75, 408)	19.62 (7.41, 39.55)	1.18 (1.05, 1.31)
Bosnia and Herzegovina	36 (18, 61)	4.30 7.31)	(2.13, 1.06 (0.82, 1.29)	672 (334, 1133)	79.80 (39.73, 134.66)	1.09 (0.87, 1.31)

Botswana	4 (2, 7)	3.03 5.57)	(1.36, -0.25 (-0.53, 0.02)	72 (35, 124)	49.55 (23.33, 88.12)	-0.34 (-0.59, -0.09)
Brazil	1405 (1000, 1846)	4.60 6.05)	(3.27, 0.76 (0.47, 1.05)	25941 (18659, 33865)	83.11 (59.70, 108.61)	0.69 (0.47, 0.91)
Brunei Darussalam	2 (1, 3)	5.24 9.33)	(2.36, -1.26 (-1.55, -0.97)	30 (15, 51)	86.46 (40.96, 149.96)	-1.22 (-1.46, -0.99)
Bulgaria	64 (35, 102)	3.30 5.21)	(1.79, 0.73 (0.14, 1.32)	1232 (672, 1940)	63.74 (34.89, 100.11)	1.01 (0.32, 1.70)
Burkina Faso	24 (9, 52)	2.67 5.93)	(0.98, 1.04 (0.80, 1.28)	425 (154, 950)	44.15 (16.07, 98.52)	0.88 (0.66, 1.11)
Burundi	8 (3, 17)	1.80 4.01)	(0.60, -0.68 (-0.78, -0.58)	147 (51, 323)	30.95 (10.53, 68.30)	-0.80 (-0.92, -0.68)
Cabo Verde	2 (1, 4)	3.62 7.73)	(1.37, 1.59 (1.03, 2.14)	31 (12, 65)	61.61 (23.26, 130.17)	1.74 (1.15, 2.32)
Cambodia	8 (3, 17)	0.78 1.63)	(0.29, 0.97 (0.88, 1.07)	147 (54, 298)	12.04 (4.44, 24.74)	0.62 (0.54, 0.71)
Cameroon	41 (19, 78)	3.55 6.78)	(1.63, 1.83 (1.73, 1.93)	792 (361, 1520)	62.40 (28.54, 119.45)	1.84 (1.75, 1.94)
Canada	244 (117, 412)	2.32 3.92)	(1.11, -4.17 (-4.45, -3.88)	3443 (1642, 5835)	33.93 (16.21, 57.53)	-4.64 (-4.92, -4.36)
Central African Republic	5 (2, 10)	2.65 5.76)	(0.91, -0.79 (-0.89, -0.70)	97 (34, 209)	48.43 (16.79, 104.59)	-0.82 (-0.92, -0.71)
Chad	9 (3, 22)	1.74 4.17)	(0.54, 0.36 (0.30, 0.42)	179 (56, 414)	30.42 (9.50, 71.19)	0.40 (0.33, 0.47)
Chile	109 (65, 161)	3.26 4.84)	(1.95, -0.41 (-0.84, 0.02)	1781 (1064, 2638)	53.65 (32.07, 79.44)	-0.52 (-0.92, -0.12)

China	1029 (521, 1706)	0.41 0.68)	(0.21, 1.66 (1.52, 1.80)	18907 (9504, 31384)	7.18 (3.60, 11.94)	1.76 (1.61, 1.90)
Colombia	302 (189, 454)	4.39 6.60)	(2.77, 0.21 (-0.38, 0.81)	5300 (3328, 7950)	77.20 (48.62, 115.71)	0.09 (-0.52, 0.70)
Comoros	1 (0, 3)	2.47 5.59)	(0.74, 0.26 (0.15, 0.36)	22 (7, 50)	42.26 (12.65, 94.98)	0.04 (-0.08, 0.17)
Congo	11 (5, 21)	4.63 9.16)	(1.97, -0.41 (-0.50, -0.33)	215 (93, 421)	82.78 (35.65, 162.86)	-0.49 (-0.57, -0.41)
Cook Islands	0 (0, 0)	3.44 7.49)	(1.24, 0.96 (0.87, 1.06)	2 (1, 4)	55.48 (20.05, 121.35)	0.81 (0.70, 0.93)
Costa Rica	22 (13, 33)	3.16 4.80)	(1.88, -0.11 (-0.64, 0.42)	382 (227, 578)	55.37 (32.95, 83.81)	-0.05 (-0.51, 0.41)
Croatia	63 (35, 99)	5.00 7.91)	(2.74, 0.10 (-0.38, 0.58)	1086 (596, 1709)	88.74 (48.55, 139.79)	0.19 (-0.35, 0.72)
Cuba	98 (49, 161)	3.76 6.16)	(1.88, -1.32 (-1.77, -0.88)	1582 (807, 2574)	62.70 (32.15, 101.84)	-1.35 (-1.79, -0.91)
Cyprus	14 (7, 25)	5.42 9.81)	(2.56, -2.30 (-2.73, -1.86)	235 (114, 418)	86.77 (41.51, 155.55)	-2.04 (-2.38, -1.71)
Czechia	114 (62, 186)	3.81 6.15)	(2.05, -0.14 (-0.77, 0.48)	1980 (1085, 3171)	67.48 (37.12, 107.45)	-0.37 (-1.22, 0.48)
Côte d'Ivoire	33 (11, 71)	3.43 7.40)	(1.19, 0.36 (0.25, 0.46)	653 (222, 1383)	60.27 (20.66, 128.63)	0.36 (0.25, 0.47)
Democratic People's Republic of Korea	16 (7, 31)	0.42 0.82)	(0.18, -0.13 (-0.18, -0.08)	312 (139, 584)	7.92 (3.48, 15.00)	-0.18 (-0.23, -0.13)
Democratic Republic of the Congo	79 (30, 163)	2.49 5.16)	(0.96, -1.09 (-1.20, -0.99)	1617 (619, 3323)	45.07 (17.29, 92.99)	-1.09 (-1.20, -0.98)

Denmark	119 (64, 189)	6.84 (3.71, 10.90)	-1.48 (-1.82, -1.13)	1792 (981, 2834)	106.78 (58.59, 168.99)	-1.90 (-2.23, -1.55)
Djibouti	1 (0, 3)	2.53 (0.87, 5.20)	0.61 (0.56, 0.67)	26 (9, 53)	43.91 (15.18, 89.77)	0.55 (0.47, 0.62)
Dominica	0 (0, 1)	4.75 (2.04, 8.77)	0.32 (-0.30, 0.94)	8 (4, 15)	79.88 (35.95, 144.38)	0.33 (0.20, 0.47)
Dominican Republic	22 (9, 39)	1.81 (0.79, 3.28)	0.62 (0.33, 0.92)	379 (167, 682)	31.50 (13.87, 56.69)	0.80 (0.48, 1.12)
Ecuador	20 (9, 37)	1.08 (0.46, 1.94)	0.60 (-0.02, 1.22)	326 (135, 598)	16.66 (6.92, 30.42)	0.33 (-0.35, 1.02)
Egypt	30 (15, 49)	0.48 (0.24, 0.82)	1.80 (1.59, 2.02)	649 (343, 1067)	9.12 (4.69, 15.25)	1.90 (1.74, 2.07)
El Salvador	5 (2, 9)	0.62 (0.30, 1.08)	0.27 (-0.23, 0.77)	87 (42, 152)	11.26 (5.47, 19.60)	0.36 (-0.13, 0.85)
Equatorial Guinea	2 (1, 4)	4.76 (1.81, 9.99)	1.14 (0.95, 1.32)	42 (16, 88)	84.79 (31.86, 178.75)	1.06 (0.87, 1.25)
Eritrea	5 (1, 11)	2.20 (0.69, 5.11)	1.28 (1.21, 1.36)	89 (28, 206)	36.87 (11.52, 85.35)	0.92 (0.84, 0.99)
Estonia	19 (11, 31)	4.97 (2.77, 7.74)	0.59 (-0.22, 1.39)	324 (183, 500)	88.72 (50.59, 135.70)	0.40 (-0.35, 1.15)
Eswatini	1 (1, 3)	2.87 (1.25, 5.37)	-0.07 (-0.17, 0.03)	28 (13, 51)	50.00 (22.57, 91.32)	0.10 (-0.03, 0.23)
Ethiopia	41 (16, 80)	0.95 (0.35, 1.85)	1.83 (1.75, 1.92)	785 (311, 1498)	16.87 (6.54, 32.45)	1.78 (1.70, 1.86)
Fiji	3 (1, 5)	4.52 (2.01, 8.19)	1.78 (1.56, 2.00)	61 (31, 103)	74.91 (35.61, 131.60)	1.58 (1.30, 1.87)

Finland	95 (51, 149)	4.96 7.74)	(2.73, -3.34 (-3.60, -3.09)	1481 (827, 2281)	82.84 (46.74, 126.40)	-3.60 (-3.90, -3.29)
France	538 (283, 874)	2.44 3.94)	(1.29, -2.28 (-2.50, -2.07)	7915 (4206, 12737)	40.16 (21.43, 64.39)	-2.40 (-2.73, -2.08)
Gabon	5 (2, 10)	5.14 9.94)	(2.14, -0.26 (-0.36, -0.17)	100 (42, 189)	90.77 (38.27, 173.12)	-0.24 (-0.39, -0.09)
Gambia	3 (1, 7)	3.52 7.45)	(1.21, 0.78 (0.59, 0.96)	64 (22, 133)	61.49 (21.31, 128.88)	0.76 (0.54, 0.97)
Georgia	34 (19, 51)	4.15 6.33)	(2.33, 5.85 (4.50, 7.20)	637 (361, 960)	79.16 (44.87, 119.24)	5.68 (4.38, 6.99)
Germany	891 (500, 1378)	3.07 4.74)	(1.73, -2.07 (-2.39, -1.75)	13741 (7783, 21055)	51.82 (29.39, 79.18)	-2.00 (-2.28, -1.72)
Ghana	63 (25, 123)	4.07 8.07)	(1.60, 0.05 (-0.07, 0.16)	1206 (476, 2359)	70.09 (27.63, 137.96)	-0.02 (-0.13, 0.09)
Greece	140 (76, 219)	3.95 6.21)	(2.14, -0.64 (-0.96, -0.31)	2216 (1202, 3484)	70.34 (37.96, 110.72)	-0.50 (-0.85, -0.16)
Greenland	0 (0, 0)	1.84 3.45)	(0.73, -3.18 (-3.62, -2.75)	2 (1, 4)	30.25 (12.08, 56.57)	-3.30 (-3.80, -2.81)
Grenada	1 (0, 1)	5.42 9.26)	(2.53, 0.42 (-0.13, 0.97)	13 (6, 22)	95.65 (45.81, 160.25)	0.30 (-0.23, 0.84)
Guam	0 (0, 1)	1.67 3.03)	(0.78, -3.56 (-4.38, -2.73)	9 (4, 15)	31.75 (14.86, 56.59)	-3.22 (-3.80, -2.64)
Guatemala	5 (3, 9)	0.43 0.69)	(0.23, -0.48 (-1.40, 0.45)	105 (60, 163)	7.95 (4.48, 12.40)	-0.32 (-1.32, 0.67)
Guinea	12 (4, 28)	2.14 4.96)	(0.62, 0.67 (0.61, 0.72)	233 (68, 535)	37.81 (10.99, 87.19)	0.72 (0.67, 0.78)

Guinea-Bissau	2 (1, 4)	2.99 6.23)	(1.17, 0.23 0.35)	(0.12, 37 (15, 76)	53.01 (21.00, 110.03)	0.15 (0.07, 0.24)
Guyana	3 (1, 5)	3.89 6.74)	(1.80, 2.15 3.66)	(0.63, 53 (25, 92)	71.31 (33.21, 122.98)	2.29 (1.36, 3.22)
Haiti	20 (9, 39)	2.95 5.77)	(1.23, 0.46 0.61)	(0.31, 415 (185, 795)	54.18 (23.49, 104.76)	0.57 (0.46, 0.68)
Honduras	10 (5, 18)	1.47 2.67)	(0.67, 1.71 1.89)	(1.53, 187 (85, 338)	25.75 (11.75, 46.64)	1.67 (1.51, 1.83)
Hungary	135 (81, 206)	4.93 7.48)	(2.94, -0.54 -0.15)	(-0.93, 2419 (1462, 3630)	90.48 (54.70, 135.24)	-0.35 (-0.76, 0.07)
Iceland	3 (1, 4)	3.30 5.20)	(1.76, -1.56 -1.29)	(-1.82, 41 (22, 64)	51.47 (27.66, 80.47)	-1.81 (-2.07, -1.55)
India	1712 (1068, 2618)	1.33 2.03)	(0.84, 2.10 2.43)	(1.78, 32154 (19955, 49301)	23.19 (14.43, 35.50)	1.95 (1.66, 2.24)
Indonesia	389 (235, 579)	1.98 2.99)	(1.20, 1.94 1.98)	(1.89, 7081 (4241, 10475)	30.89 (18.59, 46.12)	1.77 (1.73, 1.81)
Iran (Islamic Republic of)	44 (30, 61)	0.53 0.73)	(0.35, 2.28 2.70)	(1.86, 834 (565, 1140)	9.44 (6.36, 12.94)	2.00 (1.71, 2.31)
Iraq	12 (7, 18)	0.48 0.77)	(0.28, 1.44 1.63)	(1.24, 242 (139, 386)	9.26 (5.34, 14.79)	1.25 (1.09, 1.39)
Ireland	44 (25, 69)	4.05 6.35)	(2.30, -3.00 -2.62)	(-3.38, 643 (369, 991)	60.01 (34.44, 92.37)	-3.50 (-3.90, -3.09)
Israel	31 (18, 48)	1.82 2.79)	(1.06, -1.98 -1.63)	(-2.32, 473 (272, 724)	28.38 (16.35, 43.39)	-2.17 (-2.51, -1.82)
Italy	511 (277, 800)	2.32 3.62)	(1.27, -2.82 -2.47)	(-3.18, 7733 (4261, 12026)	38.82 (21.60, 60.19)	-2.99 (-3.32, -2.66)

Jamaica	8 (4, 14)	2.02 3.39)	(1.02, 0.79 (-1.06, 2.63)	139 (71, 232)	35.78 (18.48, 59.70)	0.94 (-1.55, 3.43)
Japan	3830 (2144, 6063)	6.10 9.39)	(3.53, 0.84 (0.61, 1.07)	52175 (30196, 80352)	97.23 (57.92, 146.44)	0.64 (0.42, 0.87)
Jordan	7 (4, 12)	0.99 1.69)	(0.51, -0.30 (-0.62, 0.01)	144 (74, 246)	18.36 (9.40, 31.29)	-0.42 (-0.63, -0.21)
Kazakhstan	65 (40, 95)	3.38 4.98)	(2.08, 1.86 (1.49, 2.23)	1309 (816, 1900)	61.26 (38.10, 89.35)	1.70 (1.34, 2.05)
Kenya	49 (25, 81)	2.40 3.99)	(1.18, 0.98 (0.90, 1.06)	956 (479, 1542)	40.88 (20.30, 66.92)	0.99 (0.93, 1.05)
Kiribati	0 (0, 0)	0.39 0.78)	(0.15, 1.28 (1.24, 1.33)	0 (0, 1)	6.62 (2.57, 12.99)	1.03 (0.96, 1.09)
Kuwait	2 (1, 4)	0.95 1.47)	(0.55, 1.07 (-2.05, 4.20)	43 (25, 66)	16.31 (9.55, 25.27)	0.73 (-2.43, 3.89)
Kyrgyzstan	4 (2, 8)	0.92 1.55)	(0.46, 3.85 (1.89, 5.81)	87 (42, 149)	16.57 (8.14, 28.02)	4.25 (1.23, 7.26)
Lao People's Democratic Republic	5 (2, 9)	1.13 2.10)	(0.50, 0.80 (0.76, 0.84)	84 (38, 156)	18.37 (8.15, 33.97)	0.61 (0.57, 0.65)
Latvia	24 (13, 38)	4.31 6.73)	(2.41, 1.52 (0.63, 2.42)	429 (242, 662)	80.79 (45.79, 123.86)	1.42 (0.57, 2.27)
Lebanon	19 (10, 31)	2.34 3.85)	(1.28, -0.25 (-0.39, -0.12)	315 (174, 516)	41.58 (23.12, 67.98)	-0.50 (-0.64, -0.36)
Lesotho	2 (1, 5)	2.27 4.72)	(0.77, 0.81 (0.47, 1.14)	43 (15, 89)	37.92 (13.07, 78.47)	0.77 (0.43, 1.11)
Liberia	5 (2, 12)	2.79 6.44)	(0.90, -0.01 (-0.24, 0.23)	95 (31, 218)	47.82 (15.53, 109.90)	-0.05 (-0.23, 0.13)

Libya	2 (1, 4)	0.39 0.75)	(0.17, 3.71 3.99)	(3.42, 39 (16, 75)	7.18 (3.08, 13.94)	3.74 (3.47, 4.02)
Lithuania	36 (20, 55)	4.45 6.79)	(2.54, 1.35 2.12)	(0.58, 637 (370, 961)	83.75 (48.78, 125.82)	1.30 (0.21, 2.39)
Luxembourg	5 (3, 7)	3.22 5.11)	(1.76, -2.27 -1.87)	(-2.68, 74 (41, 116)	53.49 (29.86, 83.75)	-2.43 (-3.09, -1.77)
Madagascar	26 (9, 54)	2.89 6.06)	(1.01, 0.50 0.61)	(0.39, 538 (192, 1109)	51.19 (18.10, 106.21)	0.38 (0.26, 0.49)
Malawi	18 (7, 36)	2.50 5.11)	(0.95, 1.51 1.61)	(1.42, 359 (141, 714)	45.46 (17.65, 91.61)	1.39 (1.30, 1.48)
Malaysia	203 (119, 319)	6.88 10.86)	(4.00, 1.38 2.05)	(0.72, 3577 (2110, 5590)	111.33 (65.34, 174.50)	1.16 (0.44, 1.88)
Maldives	0 (0, 1)	0.79 1.62)	(0.30, 0.14 0.38)	(-0.10, 4 (1, 9)	12.42 (4.55, 26.02)	-0.26 (-0.47, -0.04)
Mali	12 (4, 28)	1.61 3.67)	(0.52, 0.30 0.40)	(0.20, 230 (75, 522)	26.43 (8.57, 60.01)	0.22 (0.12, 0.31)
Malta	2 (1, 4)	1.66 2.75)	(0.84, -2.83 -2.42)	(-3.23, 39 (20, 64)	28.21 (14.33, 46.69)	-2.94 (-3.38, -2.50)
Marshall Islands	0 (0, 0)	2.70 5.49)	(1.01, 0.74 0.84)	(0.63, 1 (0, 3)	42.83 (16.03, 86.62)	0.59 (0.47, 0.71)
Mauritania	8 (2, 17)	3.42 7.68)	(1.05, 0.11 0.24)	(-0.03, 136 (42, 303)	57.38 (17.60, 128.04)	-0.05 (-0.17, 0.08)
Mauritius	2 (1, 4)	1.16 1.85)	(0.62, -1.07 -0.14)	(-2.00, 43 (23, 68)	18.85 (10.06, 29.87)	-1.17 (-2.13, -0.21)
Mexico	106 (64, 158)	0.73 1.09)	(0.44, -0.12 0.31)	(-0.55, 1892 (1148, 2807)	12.55 (7.60, 18.64)	-0.10 (-0.73, 0.53)

Micronesia (Federated States of)	0 (0, 0)	2.81 (0.97, 5.82)	-0.29 (-0.37, -0.21)	3 (1, 6)	43.83 (16.05, 88.57)	-0.31 (-0.37, -0.26)
Monaco	1 (0, 2)	6.72 (2.96, 12.11)	-0.73 (-0.80, -0.66)	15 (7, 26)	105.42 (47.34, 188.42)	-0.87 (-0.94, -0.80)
Mongolia	2 (1, 3)	0.92 (0.48, 1.55)	2.90 (2.56, 3.24)	40 (22, 65)	16.84 (9.00, 27.90)	2.84 (2.48, 3.19)
Montenegro	16 (8, 27)	12.68 (6.26, 21.77)	0.69 (0.37, 1.02)	287 (143, 494)	221.22 (109.75, 380.00)	0.59 (0.27, 0.91)
Morocco	21 (11, 37)	0.57 (0.29, 0.98)	4.18 (4.07, 4.29)	411 (207, 706)	10.17 (5.13, 17.48)	4.17 (4.04, 4.30)
Mozambique	32 (10, 70)	3.08 (1.00, 6.83)	1.69 (1.61, 1.78)	659 (216, 1459)	56.85 (18.61, 126.00)	1.62 (1.55, 1.69)
Myanmar	61 (31, 104)	1.25 (0.63, 2.18)	0.71 (0.66, 0.75)	1070 (550, 1822)	20.34 (10.39, 34.93)	0.53 (0.48, 0.57)
Namibia	4 (2, 7)	3.07 (1.37, 5.77)	-0.04 (-0.14, 0.06)	69 (32, 128)	50.10 (22.77, 92.89)	-0.04 (-0.14, 0.06)
Nauru	0 (0, 0)	7.25 (2.59, 15.83)	0.88 (0.79, 0.96)	1 (0, 1)	120.55 (47.43, 247.09)	0.56 (0.48, 0.63)
Nepal	21 (9, 42)	0.86 (0.36, 1.71)	1.58 (1.36, 1.81)	404 (173, 789)	14.92 (6.34, 29.36)	1.61 (1.42, 1.79)
Netherlands	262 (137, 419)	5.15 (2.70, 8.25)	-1.86 (-2.14, -1.57)	3804 (2005, 6057)	77.00 (40.61, 122.55)	-2.29 (-2.62, -1.96)
New Zealand	53 (32, 77)	4.48 (2.77, 6.58)	-4.04 (-4.87, -3.20)	791 (496, 1150)	68.94 (43.28, 100.16)	-4.45 (-4.96, -3.93)
Nicaragua	2 (1, 4)	0.43 (0.21, 0.75)	0.33 (-0.08, 0.74)	45 (22, 77)	7.89 (3.86, 13.63)	0.28 (-0.32, 0.88)

Niger	12 (3, 31)	1.61 4.28)	(0.45,	0.05 (-0.06, 0.17)	221 (61, 587)	26.85 (7.49, 71.40)	0.02 (-0.08, 0.12)
Nigeria	293 (118, 595)	3.62 7.29)	(1.47,	1.12 (0.78, 1.47)	5298 (2095, 10871)	59.77 (23.90, 121.68)	1.13 (0.77, 1.48)
Niue	0 (0, 0)	4.14 6.91)	(2.21,	0.23 (0.17, 0.29)	0 (0, 0)	66.42 (35.97, 109.70)	0.27 (0.21, 0.33)
North Macedonia	15 (7, 28)	3.86 7.21)	(1.74,	0.72 (0.45, 1.00)	286 (127, 544)	66.98 (29.92, 126.83)	0.66 (0.35, 0.96)
Northern Mariana Islands	0 (0, 0)	3.98 7.91)	(1.53,	-0.39 (-1.00, 0.22)	3 (1, 6)	62.85 (24.73, 122.29)	-0.34 (-0.58, -0.10)
Norway	100 (59, 150)	6.89 10.27)	(4.09,	-2.06 (-2.35, -1.76)	1497 (897, 2214)	107.89 (64.88, 159.04)	-2.44 (-2.76, -2.13)
Oman	1 (0, 3)	0.65 1.38)	(0.26,	6.11 (5.76, 6.47)	25 (9, 57)	12.79 (5.00, 28.05)	6.10 (5.72, 6.47)
Pakistan	210 (118, 342)	1.85 3.04)	(1.03,	2.04 (1.97, 2.12)	4057 (2302, 6593)	32.41 (18.21, 52.81)	2.02 (1.95, 2.08)
Palau	0 (0, 0)	3.30 6.34)	(1.36,	1.01 (0.92, 1.11)	1 (1, 2)	51.66 (22.00, 97.45)	0.83 (0.75, 0.90)
Palestine	2 (1, 3)	0.74 1.31)	(0.36,	0.81 (0.57, 1.06)	36 (18, 62)	13.39 (6.64, 23.44)	0.78 (0.55, 1.00)
Panama	13 (7, 21)	2.33 3.81)	(1.19,	-0.62 (-1.24, 0.01)	226 (115, 370)	41.19 (20.90, 67.34)	-0.56 (-0.97, -0.15)
Papua New Guinea	4 (1, 8)	0.92 2.01)	(0.27,	0.40 (0.30, 0.50)	78 (26, 162)	16.15 (5.05, 34.49)	0.42 (0.31, 0.52)
Paraguay	23 (11, 39)	3.35 5.78)	(1.58,	1.38 (1.13, 1.63)	430 (204, 742)	61.51 (29.17, 106.03)	1.38 (1.17, 1.59)

Peru	28 (15, 47)	0.68 1.16)	(0.36, 1.83 2.21)	(1.44, 452 (238, 779)	11.14 (5.88, 19.18)	1.59 (1.21, 1.98)
Philippines	110 (62, 172)	1.37 2.15)	(0.77, 0.35 0.58)	(0.12, 2041 (1158, 3190)	23.18 (13.11, 36.25)	0.47 (0.33, 0.62)
Poland	402 (244, 597)	4.06 6.02)	(2.47, -1.53 -1.03)	(-2.04, 7153 (4409, 10514)	72.64 (44.91, 106.65)	-1.63 (-2.06, -1.20)
Portugal	58 (33, 87)	1.64 2.46)	(0.95, -0.85 -0.42)	(-1.29, 970 (564, 1445)	30.00 (17.52, 44.49)	-0.70 (-1.13, -0.27)
Puerto Rico	12 (6, 21)	1.13 1.88)	(0.58, -2.73 -2.12)	(-3.33, 191 (98, 317)	18.77 (9.61, 31.03)	-2.67 (-3.23, -2.10)
Qatar	1 (0, 2)	1.23 2.53)	(0.53, -1.32 -0.18)	(-2.45, 15 (6, 35)	22.44 (9.34, 47.81)	-1.31 (-2.43, -0.19)
Republic of Korea	191 (87, 338)	1.61 2.87)	(0.73, -0.95 -0.78)	(-1.12, 2871 (1333, 5035)	23.78 (10.97, 41.82)	-1.27 (-1.45, -1.09)
Republic of Moldova	18 (11, 27)	2.30 3.38)	(1.39, 2.17 2.87)	(1.47, 368 (230, 528)	45.65 (28.39, 65.78)	2.40 (1.54, 3.27)
Romania	137 (88, 194)	2.64 3.74)	(1.69, 0.70 1.18)	(0.22, 2530 (1633, 3564)	50.13 (32.36, 70.53)	0.90 (0.34, 1.47)
Russian Federation	1782 (1296, 2296)	5.61 7.24)	(4.08, 1.59 2.82)	(0.35, 33383 (24310, 42912)	102.51 (74.66, 131.90)	1.40 (-0.07, 2.86)
Rwanda	12 (5, 24)	2.08 4.29)	(0.82, -0.34 -0.20)	(-0.49, 224 (91, 454)	35.02 (14.07, 71.74)	-0.57 (-0.75, -0.39)
Saint Kitts and Nevis	0 (0, 0)	3.08 5.22)	(1.51, -0.68 -0.07)	(-1.30, 4 (2, 7)	53.56 (26.49, 90.43)	-0.87 (-1.67, -0.06)
Saint Lucia	2 (1, 3)	6.04 10.18)	(2.86, -2.81 -2.17)	(-3.44, 27 (13, 46)	93.64 (45.45, 155.84)	-2.79 (-3.38, -2.20)

Saint Vincent and the Grenadines	0 (0, 1)	2.29 3.70)	(1.19, -0.43 (-0.80, -0.05)	7 (4, 11)	38.14 (20.48, 60.44)	-0.48 (-0.86, -0.10)
Samoa	0 (0, 1)	2.91 5.71)	(1.19, 0.03 (-0.02, 0.08)	8 (3, 14)	47.82 (20.11, 91.16)	0.00 (-0.11, 0.12)
San Marino	0 (0, 1)	2.22 4.55)	(0.89, -2.30 (-2.82, -1.78)	4 (1, 8)	37.21 (14.71, 77.24)	-2.31 (-2.77, -1.84)
Sao Tome and Principe	0 (0, 1)	3.47 7.64)	(1.27, 1.24 (1.04, 1.44)	7 (3, 14)	59.72 (22.52, 128.26)	1.42 (1.30, 1.55)
Saudi Arabia	3 (2, 5)	0.22 0.38)	(0.11, 3.29 (3.03, 3.55)	62 (33, 108)	3.86 (2.04, 6.79)	3.26 (2.95, 3.56)
Senegal	25 (9, 53)	3.31 6.95)	(1.18, 0.07 (-0.12, 0.28)	458 (164, 962)	55.47 (19.86, 116.55)	-0.12 (-0.35, 0.12)
Serbia	140 (86, 216)	6.13 9.49)	(3.75, -0.52 (-0.74, -0.31)	2538 (1562, 3914)	111.45 (68.45, 172.09)	-0.38 (-0.65, -0.11)
Seychelles	0 (0, 0)	1.44 2.76)	(0.59, -0.03 (-0.66, 0.61)	3 (1, 6)	23.32 (9.58, 44.85)	0.09 (-0.61, 0.79)
Sierra Leone	12 (4, 26)	3.18 7.00)	(1.10, -0.63 (-0.71, -0.55)	221 (76, 492)	55.45 (19.15, 122.82)	-0.56 (-0.62, -0.49)
Singapore	18 (8, 31)	1.73 2.98)	(0.77, -2.12 (-2.72, -1.51)	285 (133, 478)	26.82 (12.50, 45.21)	-2.69 (-3.21, -2.18)
Slovakia	40 (21, 68)	3.14 5.33)	(1.63, -0.35 (-0.49, -0.22)	755 (391, 1281)	58.44 (30.20, 99.45)	-0.33 (-0.50, -0.17)
Slovenia	21 (11, 34)	3.26 5.27)	(1.74, -0.78 (-1.29, -0.27)	342 (184, 549)	56.71 (30.70, 90.74)	-1.19 (-1.64, -0.75)
Solomon Islands	0 (0, 1)	1.74 3.72)	(0.57, 1.44 (1.32, 1.55)	7 (3, 15)	25.56 (8.67, 53.86)	1.10 (0.95, 1.24)

Somalia	5 (1, 12)	0.97 2.62)	(0.29, -0.10 (-0.20, -0.00)	99 (31, 263)	17.35 (5.22, 46.38)	-0.14 (-0.24, -0.04)
South Africa	151 (96, 222)	3.18 4.70)	(2.01, -1.07 (-1.33, -0.81)	2725 (1740, 3983)	52.71 (33.54, 77.30)	-0.98 (-1.27, -0.69)
South Sudan	5 (2, 11)	1.57 3.47)	(0.51, 0.02 (-0.03, 0.07)	102 (33, 229)	27.95 (9.06, 61.97)	-0.04 (-0.09, 0.01)
Spain	341 (189, 531)	2.45 3.80)	(1.35, -1.33 (-1.56, -1.11)	5555 (3066, 8622)	43.84 (24.16, 68.00)	-1.21 (-1.45, -0.97)
Sri Lanka	15 (7, 26)	0.49 0.86)	(0.24, 0.74 (0.34, 1.13)	255 (121, 453)	7.73 (3.68, 13.69)	0.85 (0.46, 1.24)
Sudan	8 (4, 15)	0.43 0.76)	(0.22, 4.62 (4.46, 4.79)	165 (82, 292)	8.00 (4.00, 14.14)	4.53 (4.36, 4.69)
Suriname	1 (1, 3)	1.88 3.55)	(0.79, -0.56 (-0.98, -0.13)	25 (11, 47)	33.46 (14.46, 62.41)	-0.47 (-1.03, 0.09)
Sweden	179 (98, 288)	5.34 8.56)	(2.92, -2.56 (-2.82, -2.30)	2554 (1415, 4056)	80.61 (44.55, 127.97)	-3.00 (-3.29, -2.72)
Switzerland	72 (34, 118)	2.60 4.25)	(1.26, -2.55 (-2.84, -2.26)	1017 (496, 1662)	39.90 (19.62, 64.97)	-3.00 (-3.32, -2.68)
Syrian Arab Republic	6 (3, 11)	0.45 0.83)	(0.20, 0.71 (0.54, 0.88)	129 (58, 236)	8.32 (3.77, 15.28)	0.69 (0.55, 0.83)
Taiwan	112 (53, 189)	2.02 3.39)	(0.95, 1.50 (0.83, 2.18)	1963 (921, 3299)	35.00 (16.48, 58.70)	1.30 (0.60, 2.00)
Tajikistan	2 (1, 3)	0.31 0.55)	(0.14, 0.04 (-0.29, 0.38)	33 (15, 59)	5.61 (2.59, 9.99)	-0.03 (-0.30, 0.25)
Thailand	263 (129, 460)	1.93 3.38)	(0.95, 0.48 (0.23, 0.73)	3993 (1949, 6937)	29.17 (14.29, 50.60)	0.49 (0.24, 0.75)

Timor-Leste	1 (0, 2)	0.99 1.90)	(0.43, 1.49 1.57)	(1.41, 1.49)	16 (8, 31)	16.24 (7.35, 30.87)	1.42 (1.34, 1.49)
Togo	12 (4, 25)	3.57 7.61)	(1.27, 0.14 0.22)	(0.05, 0.14)	230 (82, 484)	62.13 (22.14, 131.43)	0.10 (0.01, 0.20)
Tokelau	0 (0, 0)	3.89 8.12)	(1.45, 1.54 1.66)	(1.42, 1.54)	0 (0, 0)	61.14 (23.45, 126.06)	1.30 (1.17, 1.44)
Tonga	0 (0, 1)	3.52 6.78)	(1.52, 1.48 1.74)	(1.22, 1.48)	6 (3, 11)	59.75 (26.62, 112.60)	1.39 (1.07, 1.71)
Trinidad and Tobago	14 (8, 23)	5.90 9.44)	(3.22, -0.77 -0.35)	(-1.19, -0.77)	256 (143, 403)	102.12 (56.68, 161.37)	-0.77 (-1.27, -0.27)
Tunisia	6 (3, 12)	0.40 0.78)	(0.18, 3.60 3.73)	(3.47, 3.60)	112 (51, 214)	6.90 (3.13, 13.25)	3.42 (3.30, 3.53)
Turkmenistan	10 (5, 17)	2.41 4.04)	(1.23, 2.52 2.93)	(2.12, 2.52)	205 (103, 342)	45.40 (23.15, 75.71)	2.43 (1.95, 2.91)
Tuvalu	0 (0, 0)	3.23 6.13)	(1.28, 1.43 1.49)	(1.37, 1.43)	1 (0, 1)	51.24 (21.31, 94.38)	1.29 (1.24, 1.34)
Türkiye	260 (141, 435)	2.30 3.85)	(1.24, 0.51 0.75)	(0.26, 0.51)	5085 (2766, 8490)	43.26 (23.47, 72.23)	0.32 (0.11, 0.53)
Uganda	26 (11, 50)	1.93 3.75)	(0.81, -0.33 -0.25)	(-0.42, -0.33)	491 (203, 942)	33.32 (13.88, 64.26)	-0.38 (-0.46, -0.29)
Ukraine	309 (162, 516)	2.94 4.90)	(1.54, 0.38 0.82)	(-0.06, 0.38)	6230 (3279, 10462)	58.79 (30.90, 98.63)	0.44 (-0.45, 1.33)
United Arab Emirates	3 (2, 6)	1.79 3.16)	(0.89, 0.28 1.67)	(-1.12, 0.28)	75 (38, 130)	32.83 (16.51, 57.54)	0.35 (-0.87, 1.57)
United Kingdom	882 (619, 1172)	4.55 6.02)	(3.20, -4.74 -4.54)	(-4.93, -4.74)	12572 (8894, 16593)	68.32 (48.53, 89.98)	-5.04 (-5.25, -4.84)

United Republic of Tanzania	68 (24, 153)	2.70 6.04)	(0.95, 0.78 (0.72, 0.83)	1334 (476, 2967)	49.02 (17.38, 109.30)	0.86 (0.81, 0.91)
United States Virgin Islands	1 (0, 1)	2.29 4.23)	(1.00, -1.51 (-2.16, -0.86)	9 (4, 17)	36.97 (16.23, 67.53)	-1.62 (-2.18, -1.06)
United States of America	1568 (882, 2455)	1.93 3.00)	(1.09, -4.24 (-4.49, -3.99)	24013 (13911, 36722)	30.01 (17.45, 45.72)	-4.40 (-4.68, -4.11)
Uruguay	40 (21, 64)	5.02 8.02)	(2.65, -0.91 (-1.25, -0.57)	653 (348, 1036)	88.41 (47.34, 139.44)	-0.99 (-1.36, -0.62)
Uzbekistan	30 (16, 49)	1.19 1.97)	(0.61, 6.42 (5.83, 7.02)	600 (331, 958)	21.26 (11.35, 34.55)	6.29 (5.59, 6.99)
Vanuatu	0 (0, 1)	3.20 5.97)	(1.45, 0.21 (0.12, 0.30)	8 (4, 15)	51.13 (24.13, 92.70)	0.12 (0.01, 0.23)
Venezuela (Bolivarian Republic of)	94 (52, 153)	2.70 4.42)	(1.49, -0.61 (-1.21, -0.02)	1675 (922, 2730)	46.23 (25.50, 75.39)	-0.87 (-1.41, -0.34)
Viet Nam	165 (82, 287)	1.65 2.88)	(0.82, 2.48 (2.40, 2.56)	2812 (1411, 4897)	26.34 (13.23, 45.74)	2.50 (2.43, 2.58)
Yemen	4 (2, 8)	0.31 0.58)	(0.12, 4.29 (4.07, 4.51)	86 (35, 164)	5.66 (2.28, 10.81)	4.21 (4.01, 4.41)
Zambia	20 (7, 43)	3.14 6.69)	(1.06, 1.99 (1.82, 2.16)	407 (138, 872)	58.37 (19.74, 124.70)	2.18 (2.00, 2.36)
Zimbabwe	36 (19, 61)	6.12 10.58)	(3.17, 1.23 (1.00, 1.47)	708 (369, 1201)	104.14 (54.17, 178.21)	1.34 (1.16, 1.52)

Note: Abbreviations: SBP, systolic blood pressure; DALYs, disability-adjusted life-years; AAPC, average annual percentage change.

**Supplementary Table SVI.** Decomposition method on aortic aneurysm caused by high BMI from 1990 to 2021

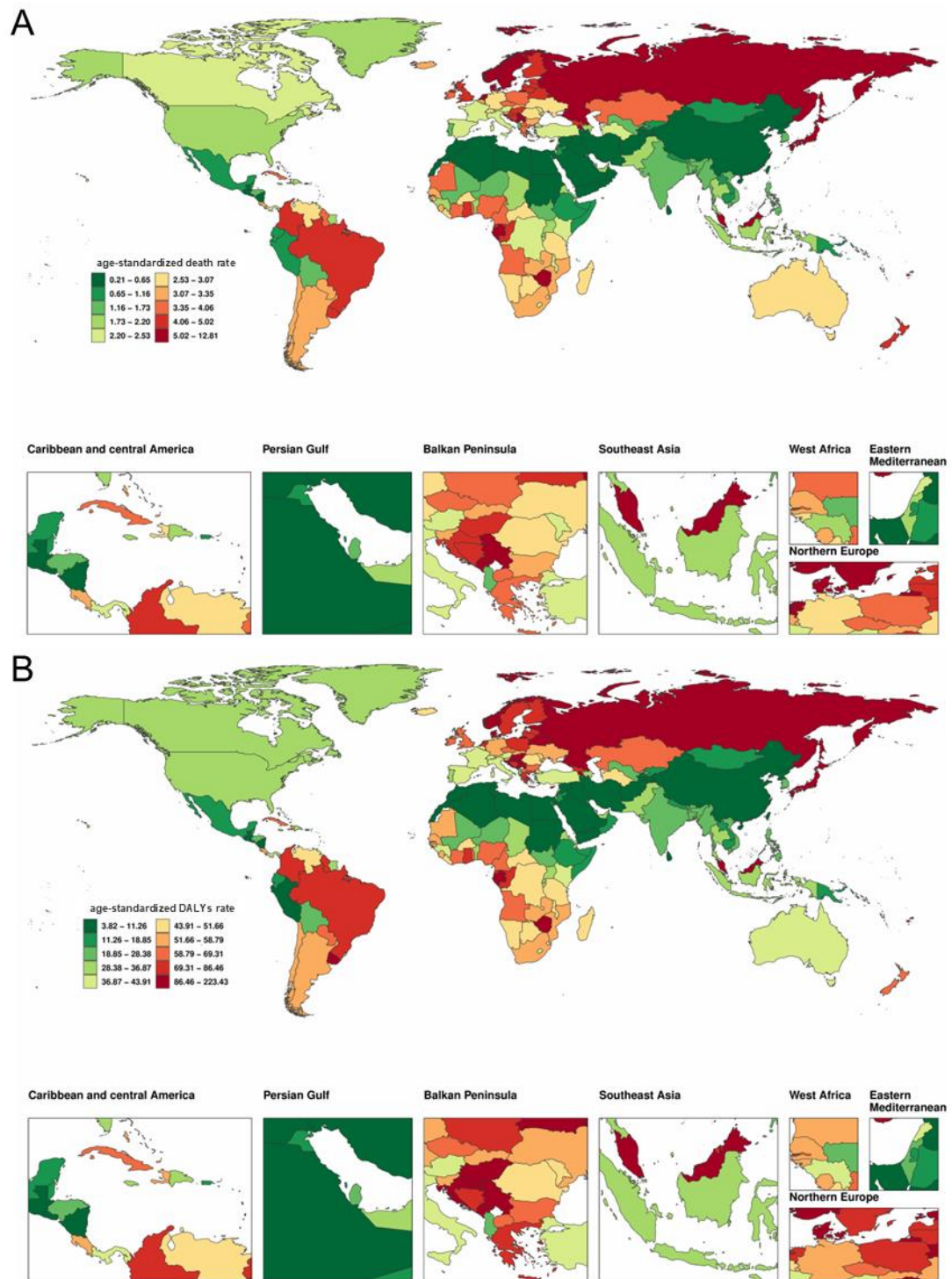
Location	Sex	Cause	Measure	Overall difference	Aging	Population	Epidemiological change
Global	Both	high BMI	Deaths	3972.83	688.59 (17.33%)	6061.81 (152.58%)	-2777.58 (-69.91%)
Global	Both	high BMI	DALYs	63979.27	5167.04 (8.08%)	108091.18 (168.95%)	-49278.96 (-77.02%)
High SDI	Both	high BMI	Deaths	429.98	414.73 (96.45%)	2785.18 (647.75%)	-2769.94 (-644.21%)
High SDI	Both	high BMI	DALYs	-1254.57	2649.81 (-211.21%)	46991.08 (-3745.6%)	-50895.46 (4056.81%)
High-middle SDI	Both	high BMI	Deaths	1630.61	142.61 (8.75%)	1282.2 (78.63%)	205.8 (12.62%)
High-middle SDI	Both	high BMI	DALYs	29067.43	764.29 (2.63%)	24424.56 (84.03%)	3878.59 (13.34%)
Middle SDI	Both	high BMI	Deaths	1242.76	72.76 (5.85%)	734.87 (59.13%)	435.13 (35.01%)
Middle SDI	Both	high BMI	DALYs	23126.96	480.88 (2.08%)	14171.4 (61.28%)	8474.68 (36.64%)
Low-middle SDI	Both	high BMI	Deaths	535.37	15.64 (2.92%)	266.9 (49.85%)	252.82 (47.22%)
Low-middle SDI	Both	high BMI	DALYs	10369.33	115.76 (1.12%)	5260.79 (50.73%)	4992.79 (48.15%)
Low SDI	Both	high BMI	Deaths	128	3.47 (2.71%)	76.4 (59.68%)	48.13 (37.6%)
Low SDI	Both	high BMI	DALYs	2569.22	19.29 (0.75%)	1561.98 (60.8%)	987.94 (38.45%)

Note: Abbreviations: BMI, body-mass index; DALYs, Disability-Adjusted Life Years.

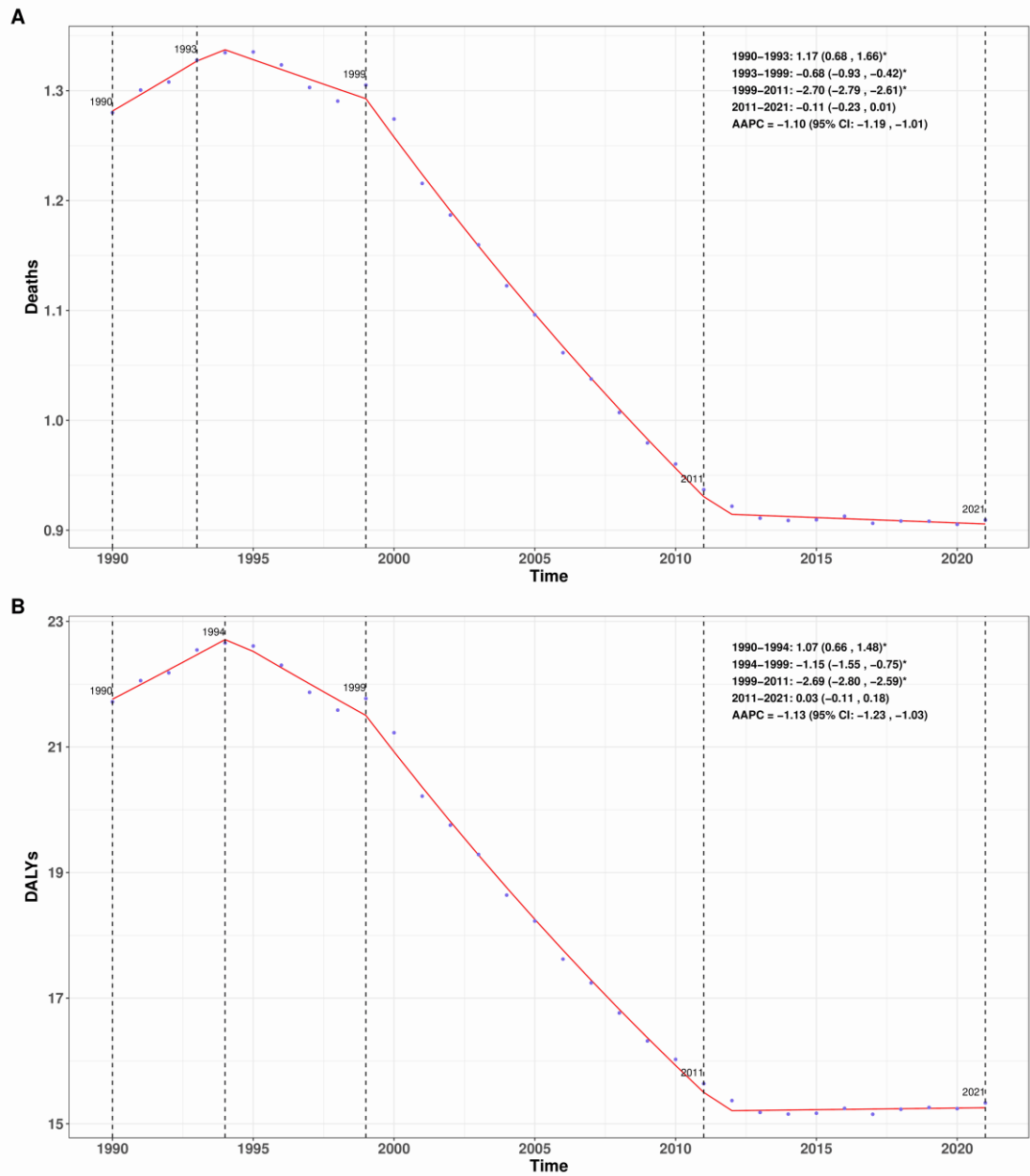
**Supplementary Table SVII.** Decomposition method on aortic aneurysm caused by high SBP from 1990 to 2021

Location	Sex	Cause	Measure	Overall difference	Aging	Population	Epidemiological change
Global	Both	high SBP	Deaths	7222.13	2078.2 (28.78%)	16392.51 (226.98%)	-11248.58 (-155.75%)
Global	Both	high SBP	DALYs	105161.91	16946.72 (16.11%)	281654.63 (267.83%)	-193439.44 (-183.94%)
High SDI	Both	high SBP	Deaths	-547.32	1262.75 (-230.72%)	7323.04 (-1337.99%)	-9133.1 (1668.7%)
High SDI	Both	high SBP	DALYs	-32689.48	9156.99 (-28.01%)	118061.58 (-361.16%)	-159908.05 (489.17%)
High-middle SDI	Both	high SBP	Deaths	2435.32	369.78 (15.18%)	3001.2 (123.24%)	-935.66 (-38.42%)
High-middle SDI	Both	high SBP	DALYs	41310.8	2358.63 (5.71%)	55458.3 (134.25%)	-16506.14 (-39.96%)
Middle SDI	Both	high SBP	Deaths	3008.37	265.69 (8.83%)	2227.46 (74.04%)	515.22 (17.13%)
Middle SDI	Both	high SBP	DALYs	53416.26	2159.73 (4.04%)	41162.17 (77.06%)	10094.36 (18.9%)
Low-middle SDI	Both	high SBP	Deaths	1811.31	76.77 (4.24%)	1116.61 (61.65%)	617.94 (34.12%)
Low-middle SDI	Both	high SBP	DALYs	33372.02	694.45 (2.08%)	21200.41 (63.53%)	11477.16 (34.39%)
Low SDI	Both	high SBP	Deaths	507.21	24.36 (4.8%)	409.9 (80.81%)	72.96 (14.38%)
Low SDI	Both	high SBP	DALYs	9645.94	193.14 (2%)	8051.96 (83.48%)	1400.84 (14.52%)

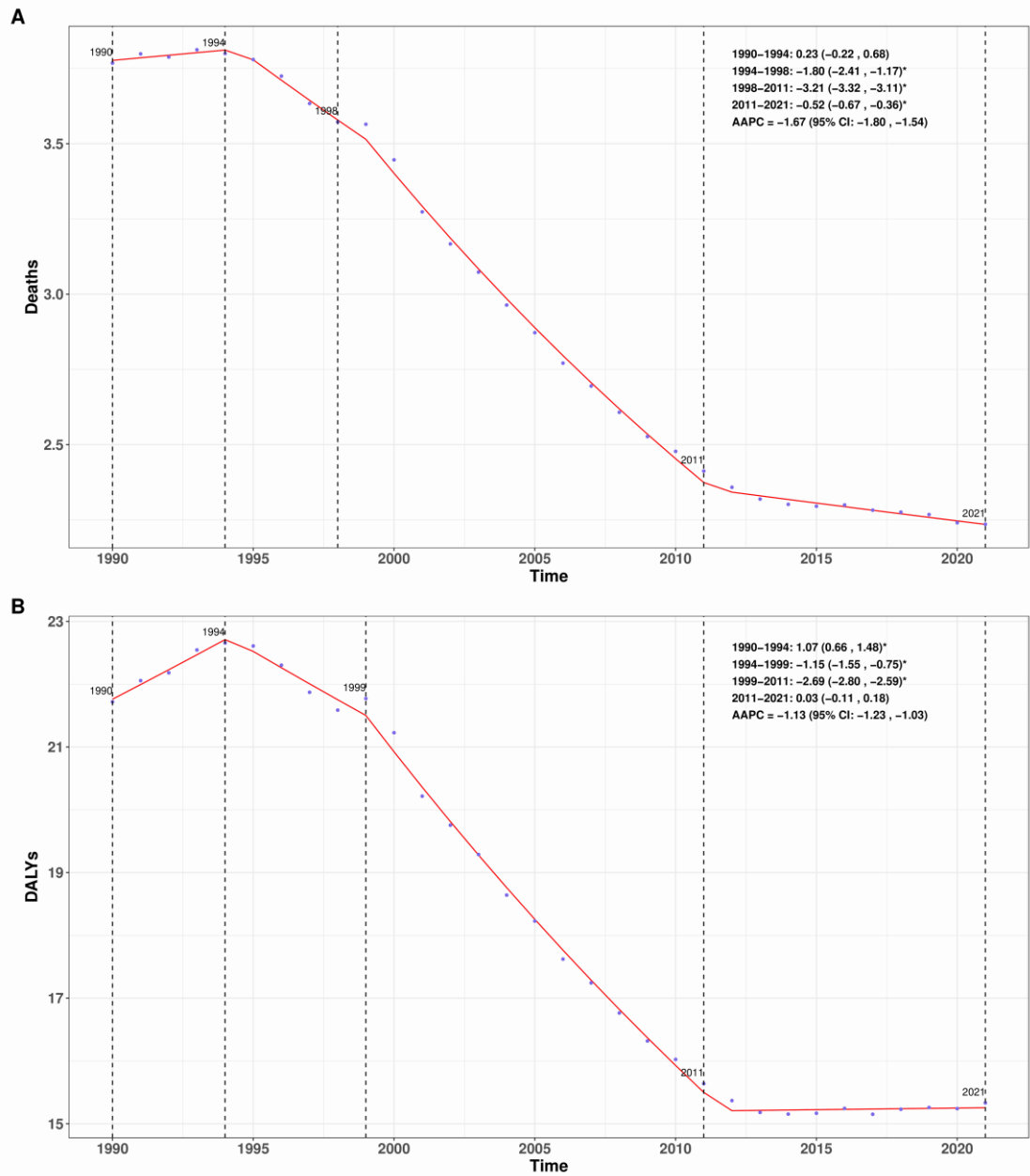
Note: Abbreviations: SBP, systolic blood pressure; DALYs, Disability-Adjusted Life Years.



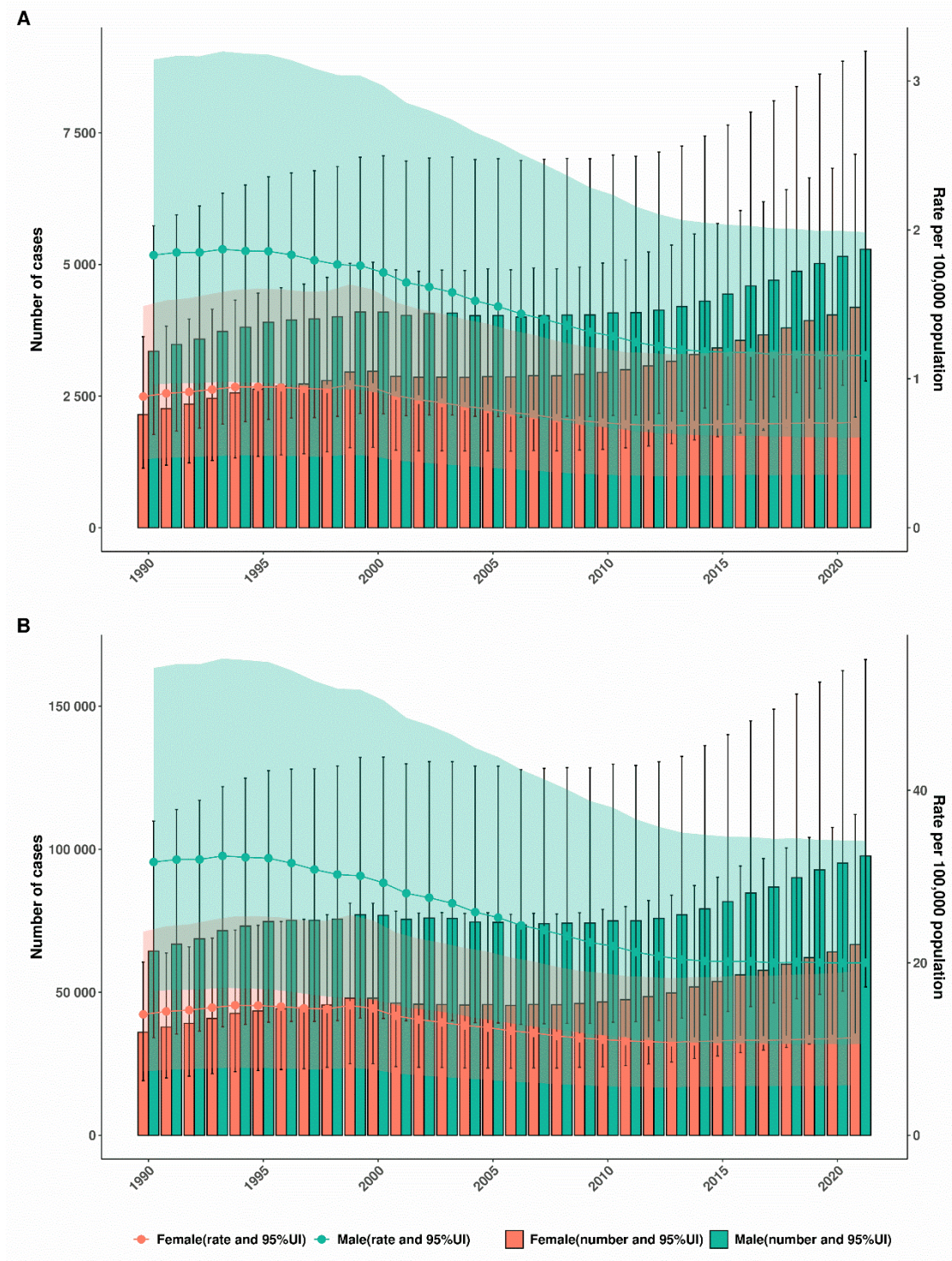
**Supplementary Figure S1.** Global aortic aneurysm burden attributable to high SBP among 204 countries in 2021. (A)Deaths; (B)DALYs. Abbreviations: SBP, systolic blood pressure; DALYs, Disability-Adjusted Life Years.



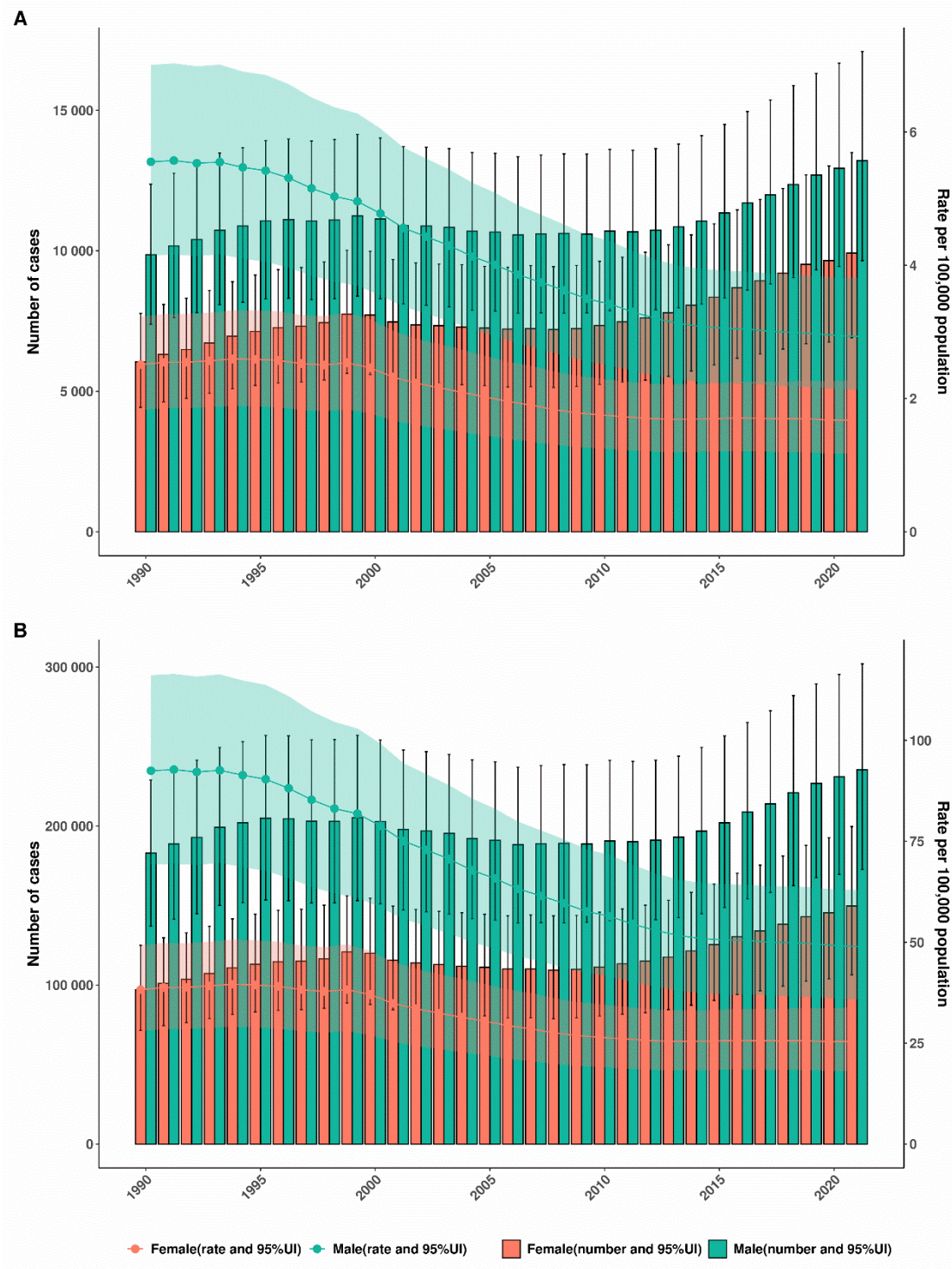
**Supplementary Figure S2.** Global annual percentage change and average annual percentage change in aortic aneurysm burden attributable to high BMI, 1990–2021. (A)Deaths; (B)DALYs. Abbreviations: BMI, body mass index; DALYs, Disability-Adjusted Life Years.



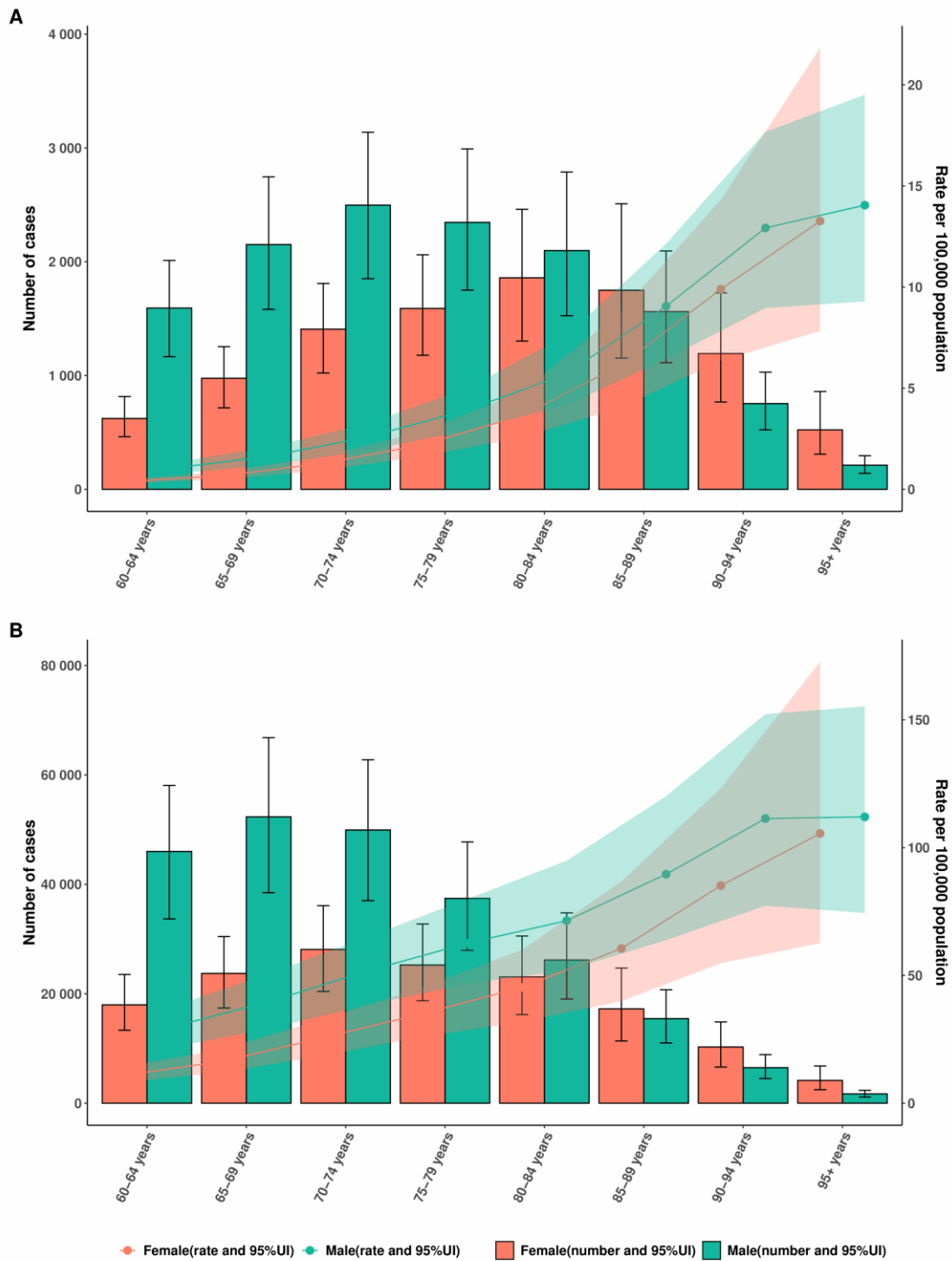
**Supplementary Figure S3.** Global annual percentage change and average annual percentage change in aortic aneurysm burden attributable to high SBP, 1990–2021. (A)Deaths; (B)DALYs. Abbreviations: SBP, systolic blood pressure; DALYs, Disability-Adjusted Life Years.



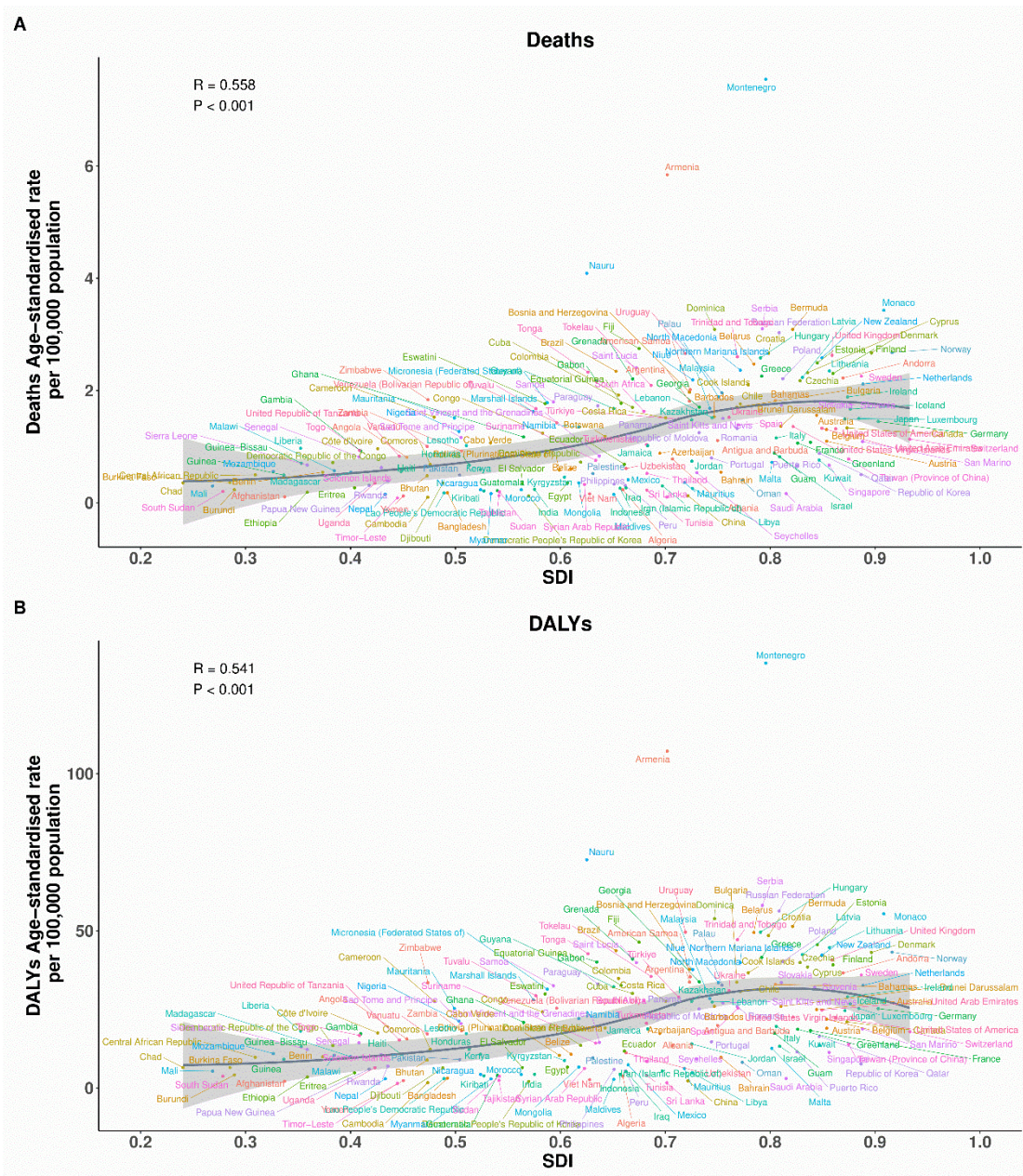
**Supplementary Figure S4.** Global trends in the burden of aortic aneurysm attributable to high BMI by sex. (A)Deaths; (B)DALYs. Abbreviations: BMI, body mass index; DALYs, Disability-Adjusted Life Years.



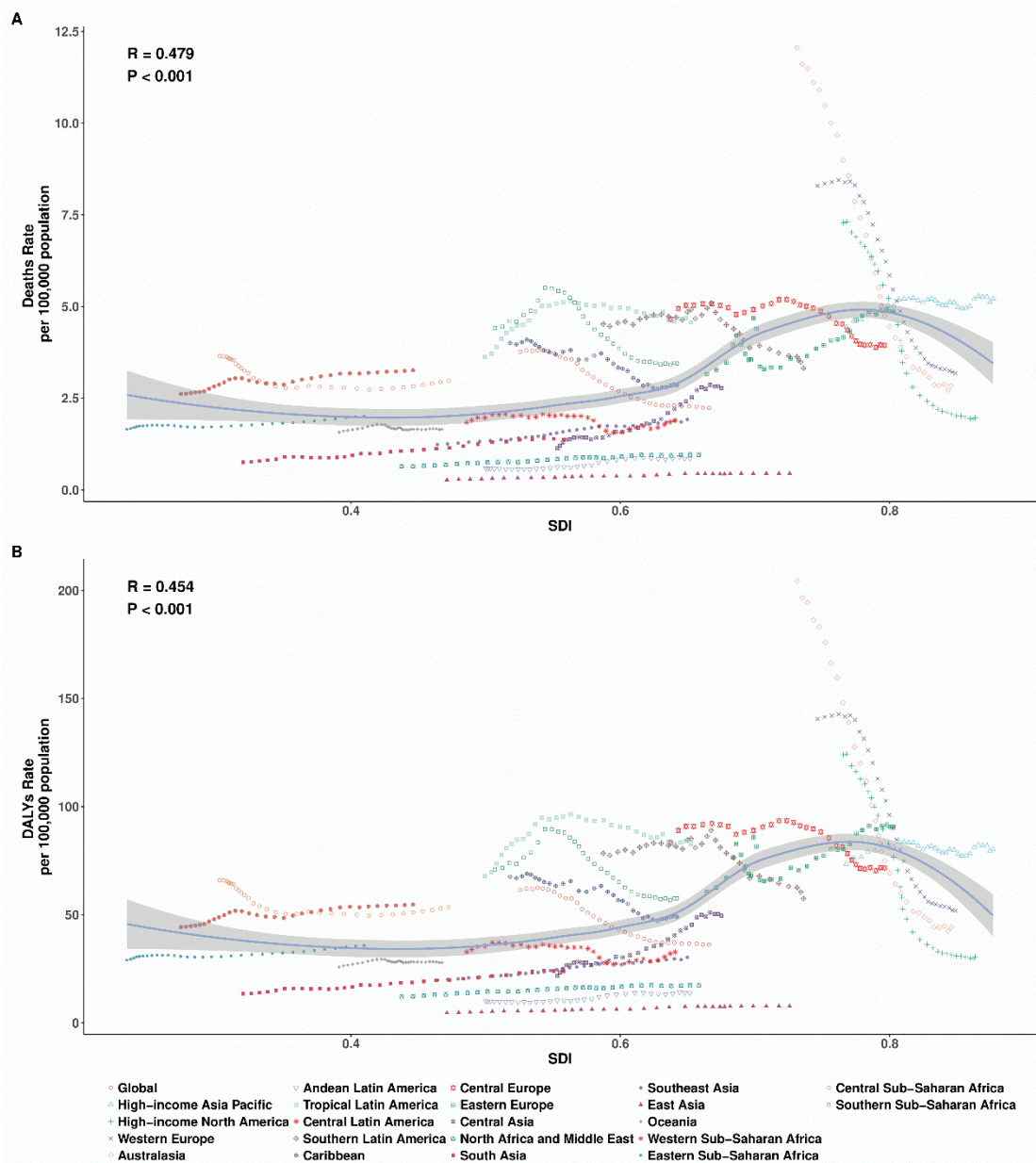
**Supplementary Figure S5.** Global trends in the burden of aortic aneurysm attributable to high SBP by sex. (A)Deaths; (B)DALYs. Abbreviations: SBP, systolic blood pressure; DALYs, Disability-Adjusted Life Years.



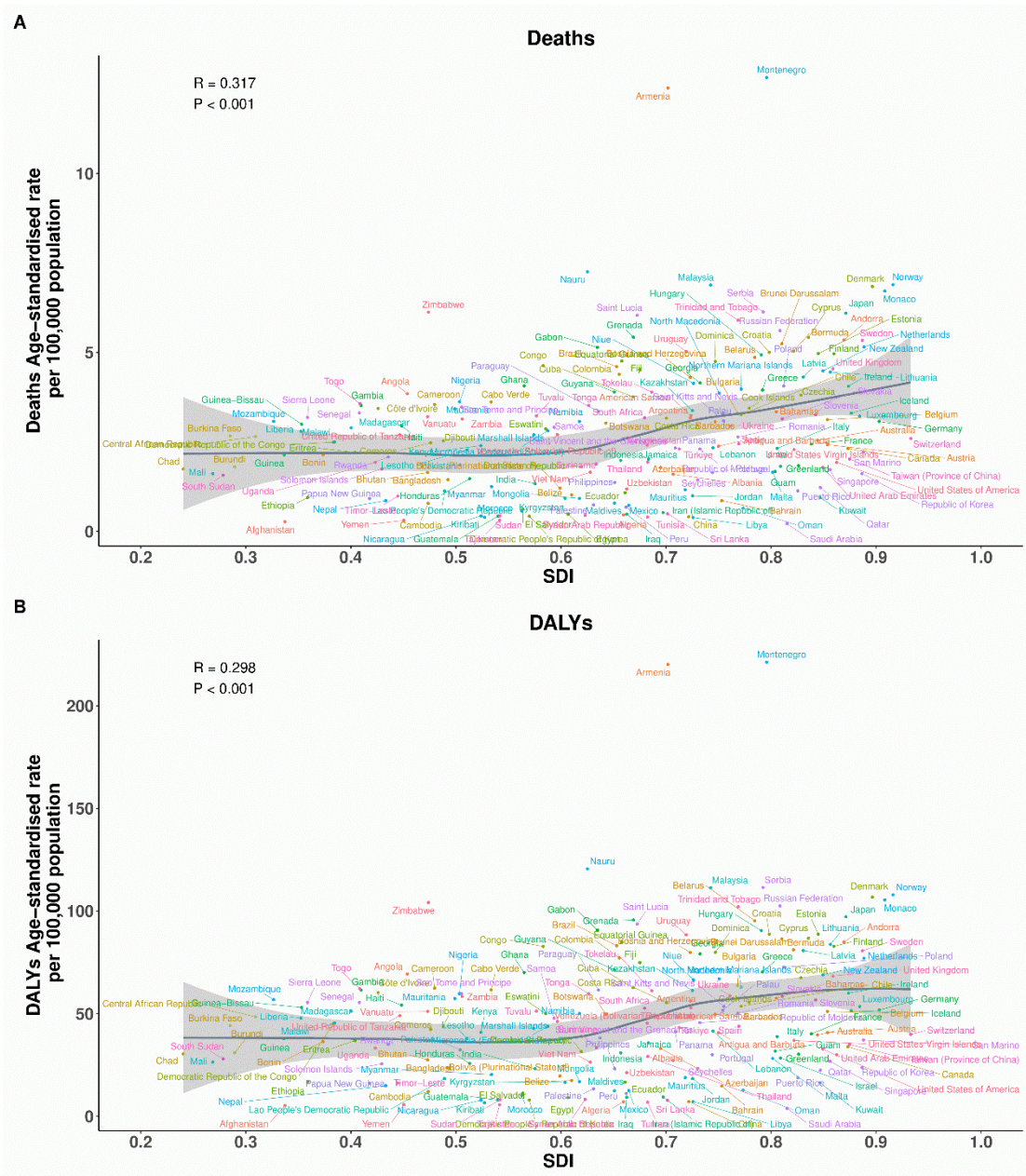
**Supplementary Figure S6.** Global burden of aortic aneurysm attributable to high SBP by age and sex. (A)Deaths; (B)DALYs. Abbreviations: SBP, systolic blood pressure; DALYs, Disability-Adjusted Life Years.



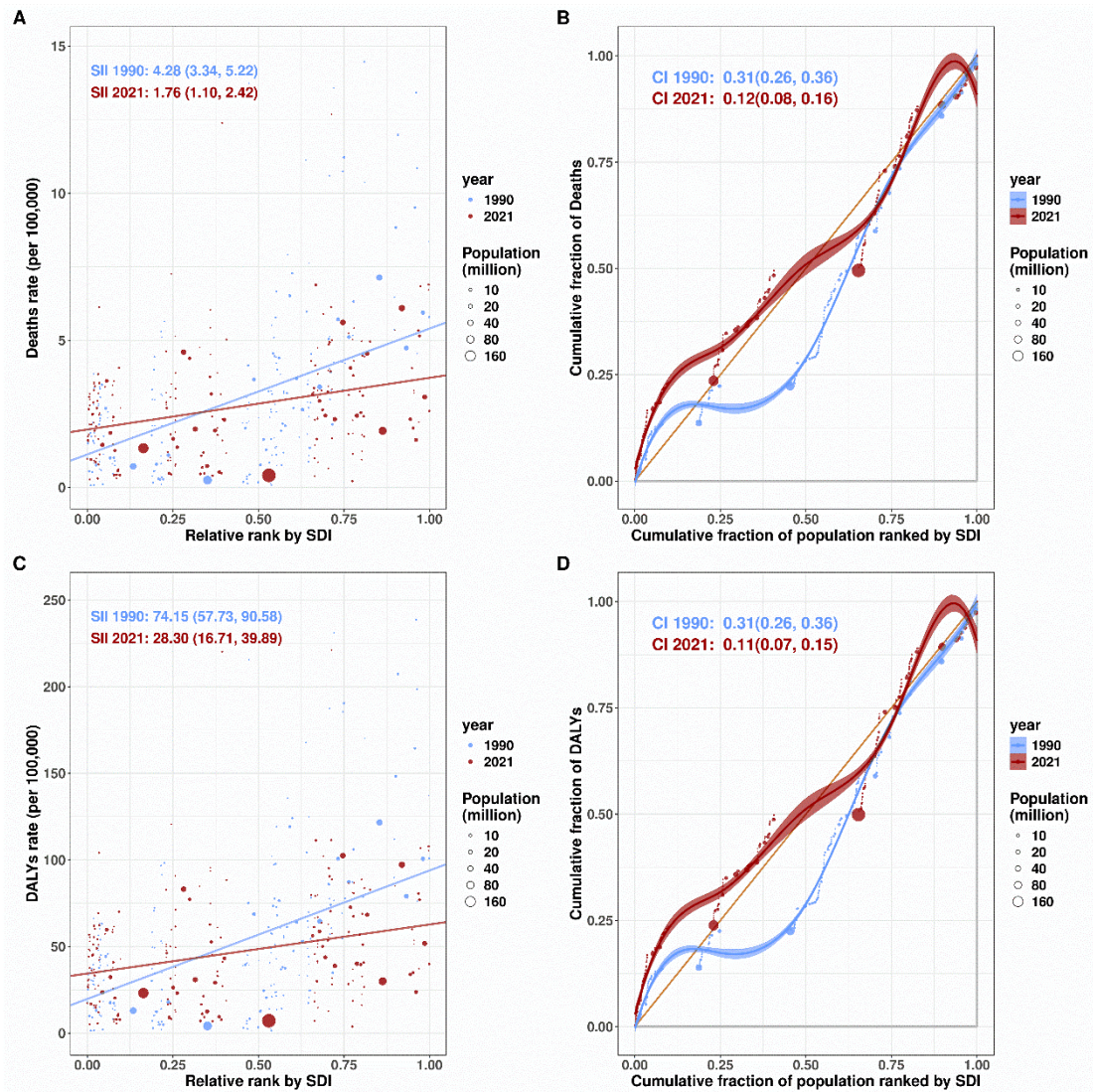
**Supplementary Figure S7.** Correlation of age-standardized rates with SDI across 204 countries for aortic aneurysm attributable to high BMI. (A)Deaths; (B)DALYs. Abbreviations: BMI, body mass index; SDI, sociodemographic index.



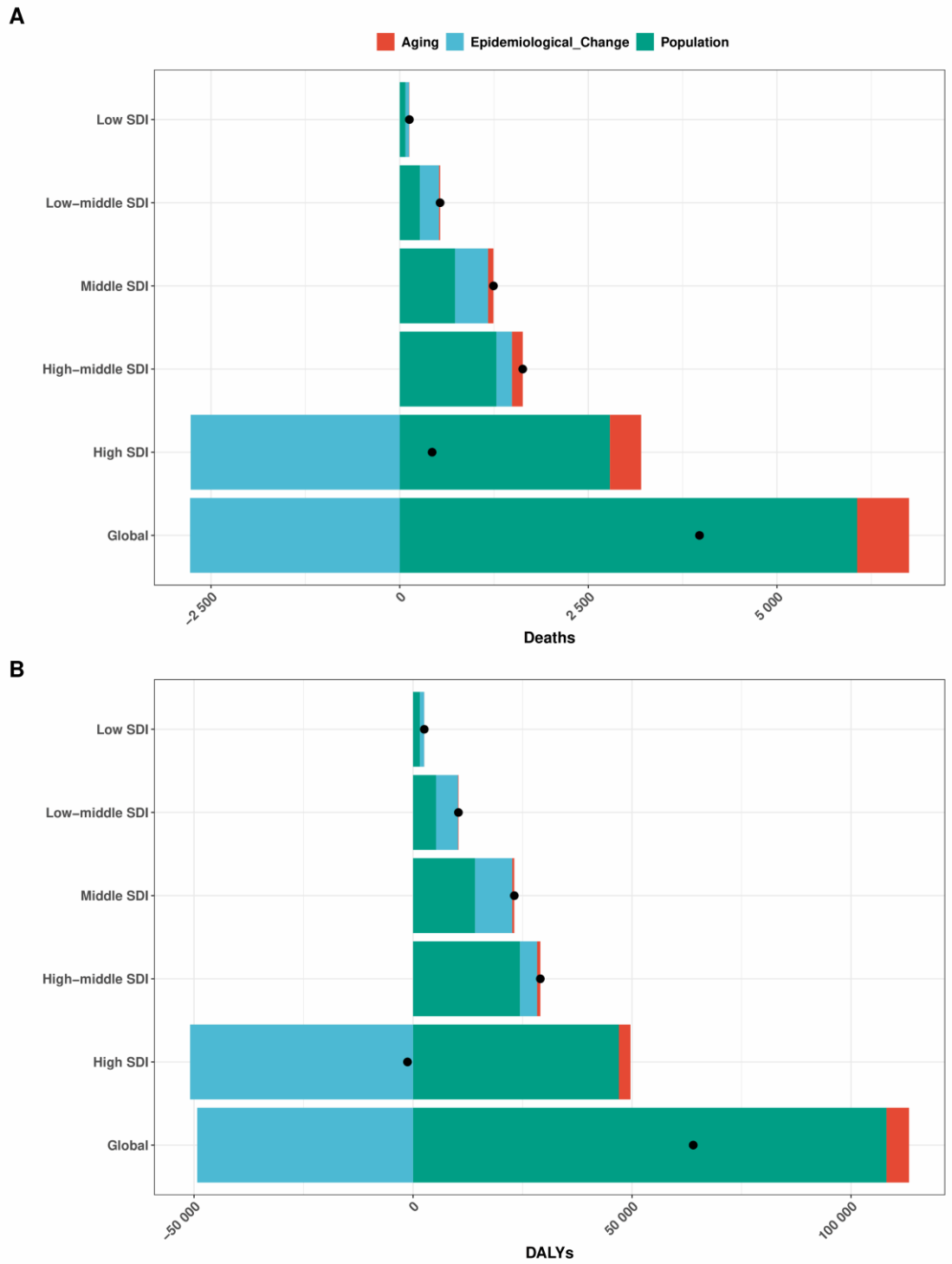
**Supplementary Figure S8.** Correlation of age-standardized rates with SDI across 21 GBD regions for aortic aneurysm attributable to high SBP. (A)Deaths; (B)DALYs. Abbreviations: SBP, systolic blood pressure; SDI, sociodemographic index; GBD, Global Burden of Disease.



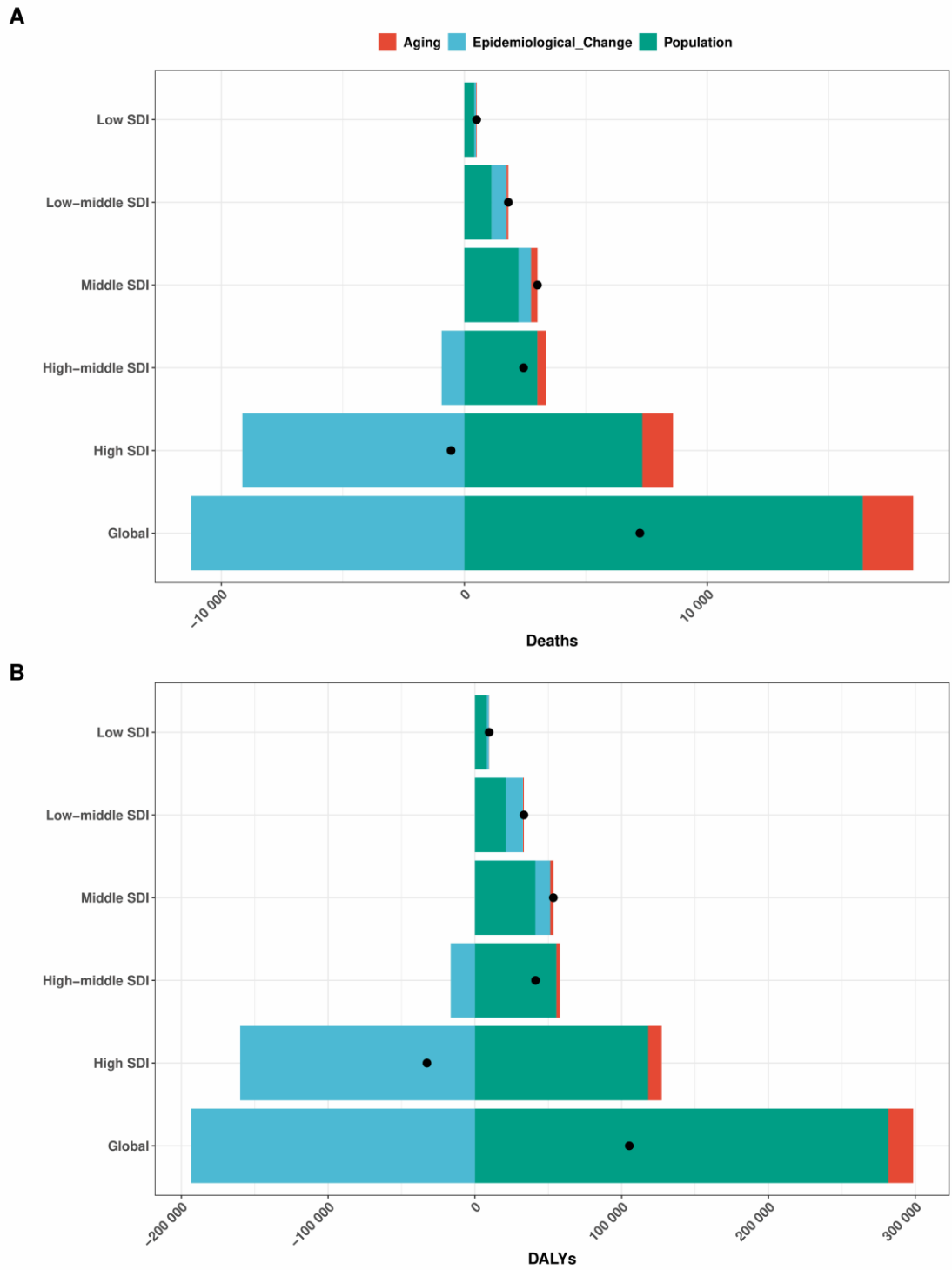
**Supplementary Figure S9.** Correlation of age-standardized rates with SDI across 204 countries for aortic aneurysm attributable to high SBP. (A)Deaths; (B)DALYs. Abbreviations: SBP, systolic blood pressure; SDI, sociodemographic index.



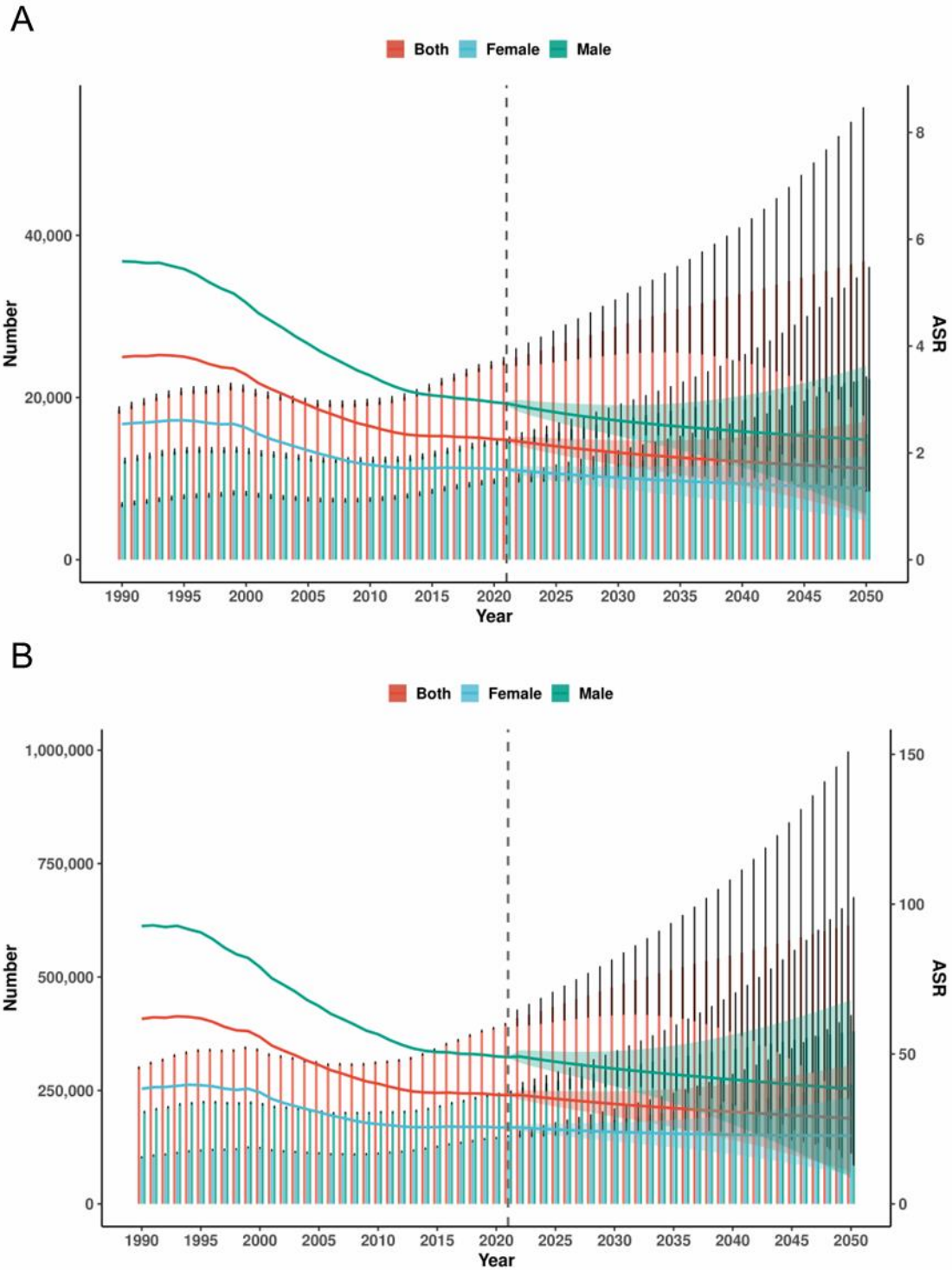
**Supplementary Figure S10.** Slope Index of Inequality in aortic aneurysm deaths and DALYs attributable to high SBP across 204 countries, 1990 and 2021. (A)Deaths; (B)DALYs. Abbreviations: SII, slope index of inequality; SBP, systolic blood pressure; DALYs, Disability-Adjusted Life Years.



**Supplementary Figure S11.** Decomposition analysis of changes in aortic aneurysm deaths and DALYs attributable to high BMI, 1990–2021. (A)Deaths; (B)DALYs. Abbreviations: BMI, body mass index; DALYs, Disability-Adjusted Life Years.



**Supplementary Figure S12.** Decomposition analysis of changes in aortic aneurysm deaths and DALYs attributable to high SBP, 1990–2021. (A)Deaths; (B)DALYs. Abbreviations: SBP, systolic blood pressure; DALYs, Disability-Adjusted Life Years.



**Supplementary Figure S13.** Predicted global aortic aneurysm counts and age-standardized rates attributable to high SBP by sex, 2022–2050. (A)Deaths; (B)DALYs. Abbreviations: SBP, systolic blood pressure; DALYs, Disability-Adjusted Life Years.