

Prognostic value of a comprehensive geriatric assessment for predicting one-year mortality in presumably frail patients with symptomatic aortic stenosis

Audrey Camarzana¹, Cédric Annweiler², Frédéric Pinaud³, Wissam Abi-Khalil⁴, Frédéric Rouleau⁴, Guillaume Duval², Fabrice Prunier⁴, Alain Furber⁴, Loïc Biere⁴

¹Institut Mitovasc, University of Angers, Angers, France

²Department of Geriatric Medicine, University Memory Center, Research Center on Autonomy and Longevity, University Hospital, Angers, France; UPRES EA 4638, University of Angers, Angers, France

³Department of Cardiac Surgery, University Hospital of Angers, Angers, France

⁴Institut Mitovasc, University of Angers, UMR CNRS 6015-INSERMU1083, Angers, France

Corresponding author:

Loïc Biere MD, PhD
Institut Mitovasc
University of Angers
UMR CNRS
6015-INSERMU1083
Angers 49000, France
E-mail: loic.biere@gmail.com

Submitted: 3 December 2018; **Accepted:** 16 May 2019

Online publication: 24 March 2021

Arch Med Sci 2022; 18 (6): 1446–1452

DOI: <https://doi.org/10.5114/aoms/109391>

Copyright © 2021 Termedia & Banach

Abstract

Introduction: Despite suffering a severe aortic stenosis, some patients are denied either surgical or transcatheter aortic valve implantation (TAVI) therapy because of a frail condition. We aimed to identify whether a comprehensive geriatric assessment (CGA) might be useful to predict the prognosis of presumably frail patients with severe aortic stenosis.

Material and methods: Between March 2011 and July 2016, 818 patients were consecutively and prospectively enrolled. 161 had a CGA and were considered for analysis. Considering combined CGA and heart team recommendations, 102 TAVI procedures were performed (TAVI group) and 59 patients constituted the no-TAVI group. The primary endpoint was all-cause mortality at 1 year.

Results: There was no difference between the TAVI and the no-TAVI groups considering morphometric data, cardiovascular risk factors or symptoms. The no-TAVI group had higher surgical risk (logistic EuroSCORE1 33.4 ±17.8 vs. 22.7 ±14.9; $p < 0.001$) and more moderate renal insufficiency (82% vs. 57%; $p = 0.001$). One-year mortality was 16% in the TAVI group and 46% in the no-TAVI group ($p < 0.001$). Multivariate analysis revealed that history of pulmonary edema, moderate renal failure, and not having a TAVI were associated with 1-year mortality. There was an interaction between the Five-Times-Sit-to-Stand-Test (FTSST) and the effect of TAVI on mortality ($p = 0.049$), as FTSST was the only predictor for 1-year mortality in the no-TAVI group (HR = 0.18, 95% CI: 0.04–0.76; $p = 0.019$).

Conclusions: One-year mortality was higher in geriatric-assessed frail patients who did not undergo TAVI. FTSST, which assesses patients' mobility, was the only prognostic marker for 1-year mortality, on top of the usual medical parameters.

Key words: aortic stenosis, transcatheter aortic valve implantation, comprehensive geriatric assessment, frailty.

Introduction

In developed western countries, aortic stenosis is the most common valvular heart disease in individuals over 65 years of age [1]. Surgical aortic valve replacement (SAVR) is the first-line therapy for symptomatic patients, improving prognosis and quality of life [2, 3].

Transcatheter aortic valve implantation (TAVI) may be performed among patients according to either a high surgical risk, a technical contraindication to surgery or a general poor condition named frailty [4, 5].

Frailty is a clinical syndrome combining decrease in physiological reserve and stress tolerance [6, 7] that can be assessed implicitly, while a comprehensive geriatric assessment (CGA) helps to globally assess medical and social issues of older adults based on a set of clinical scores, questionnaires and biological tests [8].

Heart team and geriatric evaluation units will assess every patient denied surgical therapy because of frailty to determine whether TAVI remains appropriate [9, 10].

The aim of the study was to identify whether CGA might be useful to improve the precision of the 1-year prognosis of presumably frail patients, whatever the management of aortic stenosis.

Material and methods

Study population

A total of eight hundred eighteen patients considered for TAVI were prospectively and consecutively enrolled between March 2011 and July 2016.

Inclusion criteria were a symptomatic severe aortic stenosis and being denied a SAVR by a heart team because of either a technical barrier (for instance porcelain aorta, chest deformation, or history of chest radiotherapy), a high preoperative risk as assessed by the EuroSCORE (a risk model for the prediction of mortality after heart surgery), or because of a heart team-assessed general poor condition to undergo thoracic surgery named frailty.

One hundred sixty-one patients presenting a general frail condition raised concerns about the direct individual benefits of undergoing TAVI; they necessitated a CGA before the final decision from the heart team and constituted the study population. The heart team included an interventional cardiologist, a non-interventional cardiologist, a heart surgeon and an anesthesiologist. The team took all CGA data into account to determine the most appropriate care.

The local ethical committee approved the research protocol (#2017/45) and the study was conducted in accordance with the Declaration of Helsinki and local regulatory requirements.

Data collection

All data related to demographic, morphometric, and echocardiographic parameters, and medical history were prospectively collected. Pulmonary hypertension was defined as a systolic pulmonary artery pressure of more than 35 mm Hg, moderate renal insufficiency by a creatinine clearance of less than 60 ml/min, respiratory insufficiency by the daily use of bronchodilator or inhaled corticosteroid, and history of pulmonary edema by at least two acute episodes during the last 12 months [11].

The CGA was performed by the geriatric evaluation unit during hospitalization to appreciate medical and social issues related to older adults. The main items were: an evaluation of polypharmacy based on the number of therapeutic classes used per day and the use of psychoactive drugs, memory by the learning and recall categories of the Mini-Mental State Examination (Short MMSE) [12] and the clock-drawing test (CDT) score [13], pain assessed by the verbal rating scale [14], nutrition by the short form of the Mini Nutritional Assessment (MNA) [15] and by the body mass index (BMI), independency by iso-resource group (GIR) [16] and Instrumental Activities of Daily Living (IADL) [17]), and mobility by the Five-Times-Sit-to-Stand Test (FTSST), which was considered as positive if accomplished without assistance and/or without use of upper extremity support [18].

Follow-up and outcomes

Follow-up was completed for all patients for at least 1 year with a median of 456 [153; 815] days. It involved immediate feedback provided by consultants and phone interview with a general practitioner. The primary endpoint was all-cause mortality at 1 year.

Statistical analysis

All statistical tests were performed using SPSS 20.0 software (IBM, Chicago, Illinois). Quantitative variables were expressed as mean \pm standard deviations, unless stated otherwise, and qualitative variables as numbers and percentages. Comparisons of quantitative variables were conducted by means of unpaired Student's *t*-test. Comparisons of qualitative variables were performed using the χ^2 or Fisher's test, as appropriate.

Cox regression models were applied to explain 1-year all-cause mortality. Multivariate analysis included common medical data, aortic stenosis parameters, and CGA results. Only significant univariate correlates ($p < 0.05$) were included into the multivariate Cox models. Specific interactions were tested between TAVI and NYHA score, FTSST,

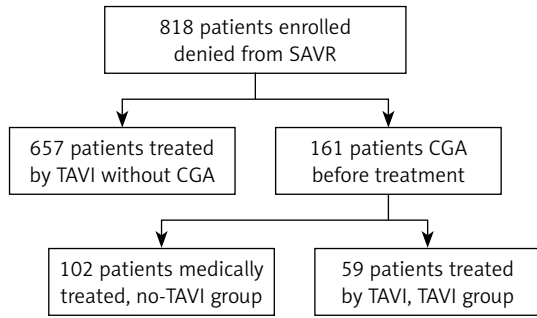


Figure 1. Flow chart

moderate renal failure and respiratory failure. Then, multivariate Cox regression models were performed separately on the TAVI and the no-TAVI groups.

Proportional-hazard assumptions were tested by analysis of the Schoenfeld residuals. Statistical significance was set at $p < 0.05$.

Results

Baseline characteristics

Study population

CGA patients were older (85.9 ± 4.6 vs. 82.8 ± 7.1 years old, $p < 0.001$), with higher logistic EuroSCORE (29.5 ± 17.5 vs. 19.5 ± 12.6 , $p < 0.001$), and lower LV ejection fraction (53.5 ± 13.7 vs. $58.7 \pm 12.2\%$, $p < 0.001$) compared to patients who did not require CGA prior to TAVI. CGA patients presented more history of atrial fibrillation (51% vs. 32%, $p < 0.001$), but similar rates of history of diabetes, peripheral artery disease, stroke, renal failure, coronary artery disease, and symptoms related to aortic stenosis.

Out of 161 CGA patients, 102 patients did not undergo a TAVI (no-TAVI group) and 59 patients underwent a TAVI (TAVI group) (Figure 1). In the TAVI group, 14 patients had a CoreValve (Medtron-

Table I. Patient characteristics at baseline, cardiovascular data

Parameter	Total	TAVI	No-TAVI	P-value
Morphometric characteristics:				
Age [years]	85.9 ±4.6	85.5 ±5.1	86.1 ±4.3	0.4
Weight [kg]	67.4 ±14.4	69.5 ±14.7	66.2 ±14.3	0.17
Height [cm]	160.8 ±8.4	161.6 ±7.6	160.3 ±8.8	0.34
Body mass index [kg/cm ²]	26 ±5	26.5 ±5	25.7 ±5.1	0.36
Surgical risk scores:				
Logistic EuroSCORE 1, %	29.5 ±17.5	22.7 ±14.9	33.4 ±17.8	< 0.001
STS, %	8.8 ±6	6.7 ±4.7	9.8 ±6.3	0.003
Medical history, n (%):				
Ischemic cardiomyopathy	67 (42)	22 (38)	45 (44)	0.49
Pacemaker	34 (21)	16 (28)	18 (17)	0.12
Atrial fibrillation	82 (51)	30 (52)	52 (50)	0.84
Anticoagulation therapy	76 (47)	29 (50)	47 (46)	0.56
Balloon aortic valvuloplasty after CGA	13 (8)	0 (0)	13 (12)	–
Respiratory insufficiency	25 (15)	6 (10)	19 (18)	0.17
Stroke	31 (19)	12 (21)	19 (18)	0.71
Moderate renal insufficiency	117 (73)	33 (57)	84 (82)	< 0.001
Cardiovascular risks factors, n (%):				
Hypertension	134 (84)	45 (78)	89 (87)	0.17
Hypercholesterolemia	72 (45)	26 (45)	46 (45)	0.95
Smoking	12 (7)	4 (7)	8 (7)	0.85
Diabetes	42 (26)	18 (31)	24 (23)	0.27
Aortic stenosis parameters:				
NYHA > 2, n (%)	99 (62)	41 (71)	58 (56)	0.06
History of pulmonary edema, n (%)	57 (35)	20 (35)	37 (36)	0.88
Left ventricular ejection fraction, %	53.5 ±13.7	54 ±13.3	53.2 ±13.9	0.73
Mean pressure gradient [mm Hg]	48.6 ±15.2	49.2 ±13.9	48.3 ±15.9	0.72
Pulmonary hypertension, n (%)	83 (53)	33 (61)	50 (50)	0.013

CGA – comprehensive geriatric assessment, NYHA – New York Heart Association, STS – Society of Thoracic Surgeons, TAVI – transcatheter aortic valve implantation.

ic, Santa Ana, CA, USA) prosthesis and 45 had an Edwards Sapien, Sapien 3 or Sapien XT prosthesis (Edwards Lifesciences, Irvine, CA, USA). Forty-four (74%) patients had a transfemoral, 6 (10%) a transapical and 9 (16%) another approach. The TAVI was a success in 57 cases (96.6%) with no relevant procedural complications.

Mean age was 85.9 ±4.6 years (85.5 ±5.1 vs. 86.1 ±4.3; $p=0.40$) and mean BMI was 26 ±5 kg/cm² (26.5 ±5 vs. 25.7 ±5.1; $p = 0.36$).

The no-TAVI group had a higher surgical risk score (logistic EuroSCORE 1: 33.4 ±17.8 vs. 22.7 ±14.9; $p < 0.001$) and higher rates of moderate renal insufficiency (82% vs. 57%; $p = 0.001$).

No-TAVI and TAVI patients presented similar rates of New York Heart Association (NYHA) functional class III or IV (71% in TAVI group vs. 56% in no-TAVI group; $p = 0.06$), history of pulmonary edema (35% vs. 36%; $p = 0.88$), and similar left ventricular ejection fraction and transvalvular mean pressure gradient. However, there was more pulmonary hypertension in the TAVI group (61% vs. 50%; $p = 0.013$) (Table I).

Geriatric characteristics

There was no difference regarding history of falls, number of therapeutic classes used per day, use of psychoactive drugs, social isolation and needs for home care worker support.

The no-TAVI group presented more memory impairment with a lower short MMSE and CDT score (respectively 36% of MMSE3 > 5 vs. 57%; $p = 0.013$ and 1.4 ±2.1 points vs. 2.7 ±2.4; $p = 0.025$).

Moreover, the no-TAVI group was more dependent with a significantly lower GIR score than the TAVI group (3.6 ±0.9 vs. 4.2 ±0.9; $p < 0.001$) (Table II). FTSST was achieved in 18% of the cohort (respectively 15% vs. 25% for no-TAVI and TAVI group, $p = 0.20$).

One-year mortality

One-year mortality was 16% ($n = 16$) in the TAVI group and 46% ($n = 27$) in the no-TAVI group ($p < 0.001$) (Figure 2).

Independent 1-year mortality correlates were: not having a TAVI performed (HR = 76.92 95% CI: 3.47–1707; $p = 0.006$), moderate renal insufficiency (HR = 3.67, 95% CI: 1.29–10.44; $p = 0.015$) and a history of pulmonary edema (HR = 2.15, 95% CI: 1.15–3.99; $p = 0.016$). We found an interaction for the effect of TAVI on 1-year mortality according to FTSST ($p = 0.049$) (Table III).

In the no-TAVI group, the multivariate Cox regression model performed revealed a success in FTSST to be the best predictor for 1-year mortality (HR = 0.18, 95% CI: 0.04–0.76; $p = 0.019$). There was also a trend towards history of pulmonary edema (HR = 1.81, 95% CI: 0.97–3.37; $p = 0.06$) and respiratory insufficiency (HR = 0.36, 95% CI: 0.12–1.03; $p = 0.06$) (Table IV, Figure 3).

In the TAVI group, multivariate Cox analysis did not reveal any CGA parameter to be related to 1-year prognosis. Respiratory insufficiency (HR = 40.9, 95% CI: 6.52–257; $p < 0.001$) and moderate renal insufficiency (HR = 11.95, 95% CI: 1.57–90.90; $p = 0.017$) were the predictors of 1-year mortality.

Table II. Patient characteristics at baseline, geriatrics data

Parameter	Total	TAVI	No-TAVI	P-value
General characteristics:				
History of falls, n (%)	65 (43)	21 (38)	44 (45)	0.41
Number of therapeutic classes	7.5 ±2.8	7.3 ±2.7	7.7 ±2.8	0.45
Psychotropic drug therapy, n (%)	79 (51)	23 (42)	56 (56)	0.11
Exhaustion, n (%)	58 (45)	19 (42)	39 (46)	0.61
Isolation, n (%)	56 (39)	22 (41)	34 (37)	0.66
Homecare workers, n (%)	120 (75)	38 (67)	82 (80)	0.08
Comprehensive geriatric assessment:				
Simple verbal scale (SVC)	0.6 ±1	0.4 ±0.8	0.8 ±1	0.07
Five-Times-Sit-To-Stand-Test (FTSST), n (%)	24 (18)	11 (25)	13 (15)	0.20
Geriatric Depression Scale (GDS) > 4	0.8 ±1	0.6 ±0.8	0.9 ±1.1	0.11
Instrumental Activities of Daily Living Scale (IADL)	1.5 ±1.2	1.7 ±1.1	1.4 ±1.2	0.17
Short Mini Mental State Examination (short MMSE) > 5, n (%)	66 (44)	31 (57)	35 (36)	0.013
Mini Nutritional Assessment (MNA)	8 ±2.2	8.2 ±2.1	7.9 ±2.3	0.36
Iso-resource group (GIR)	3.8 ±0.9	4.2 ±0.9	3.6 ±0.9	< 0.001
Clock drawing test, au	1.8 ±2.3	2.7 ±2.4	1.4 ±2.1	0.025

TAVI – transcatheter aortic valve implantation.

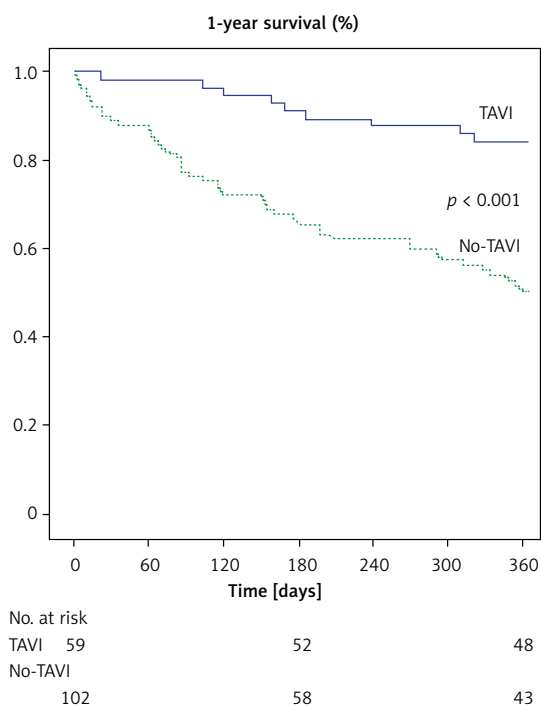


Figure 2. Time-to-event curves for the primary end-point

Discussion

The main results of our study are: (1) TAVI was effectively associated with reduced 1-year all-cause mortality in presumably frail older patients suffering from severe aortic stenosis, and (2) FTSST was the best mortality predictor among the patients who did not undergo TAVI.

In the no-TAVI group, 1-year mortality was very high, which is consistent with previous literature [19, 20]. Only a few recent studies have reported

long-term survival of untreated severe aortic stenosis, as the last dated palliative therapy was balloon aortic valvuloplasty (BAV) in the 1990s, when 1-year mortality was around 43% without [21] and 36% with [22] BAV. On the other hand, 1-year mortality in the TAVI group was 16%. Considering that our patients underwent CGA because they were presumed frail and unsuitable for TAVI, it is noticeable that this 16% 1-year mortality remains comparable with the 21.4–24% reported by the largest national TAVI registries [11, 23]. Beyond the TAVI procedure by itself, 1-year mortality predictors were history of pulmonary edema or moderate renal failure, as previously reported by others [24, 25], but none of the CGA parameters (Table III).

In the no-TAVI group, the FTSST was the best predictor for 1-year mortality. Poor mobility was already identified as a good predictor of poor outcomes and mortality in heart disease. For instance, the Gait Speed test – another measure of functional capacity – [26] is associated with both morbidity and mortality in older patients undergoing cardiac surgery [27]. In the TAVI population, the slowest walker and those unable to walk also presented higher mortality [28]. While loss of mobility may be inherent to the cardiac condition itself, our analysis showed the mobility assessment alone and not the usual cardiac markers to relate to mortality in the no-TAVI group. This result suggests that frail patients suffer more from a poor general mobility condition rather than a cardiac condition. We should acknowledge that every single patient from our cohort presented surgical aortic stenosis with severe symptoms (Table I), potentially explaining the fact that usual cardiac markers were not discriminant – and FTSST might relate to a worse prognosis in the general subset

Table III. One-year all-cause mortality, multivariate analysis

Parameter	HR	95% CI	P-value
No TAVI	76.92	3.47–1707	0.006
History of pulmonary edema	2.15	1.15–3.99	0.016
Moderate renal insufficiency	3.67	1.29–10.44	0.015
FTSST success	25.72	0.53–1248	0.10
Mini nutritional assessment	0.94	0.81–1.09	0.42
Interaction between FTSST and no-TAVI	0.01	0.01–0.1	0.049

CI – confidence interval, FTSST – Five-Time-Sit-to-Stand test, HR – hazard ratio, TAVI – transcatheter aortic valve implantation.

Table IV. One-year mortality in no-TAVI group, multivariate analysis

Variable	HR	95% CI	P-value
History of pulmonary edema	1.81	0.97–3.37	0.06
Moderate renal insufficiency	2.24	0.77–6.54	0.14
FTSST success	0.18	0.04–0.76	0.019
Respiratory insufficiency	0.36	0.12–1.03	0.06

CI – confidence interval, FTSST – Five-Time-Sit-to-Stand test, HR – hazard ratio, TAVI – transcatheter aortic valve implantation.

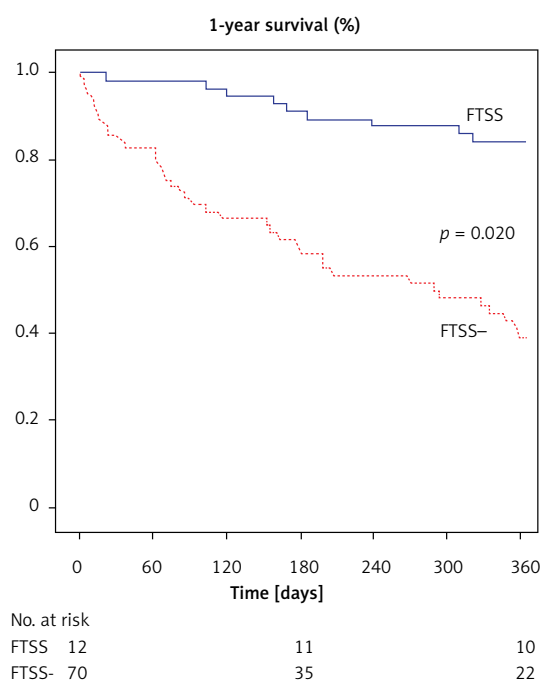


Figure 3. Time-to-event curves for the primary end-point according to the FTSST results among the no-TAVI patients

FTSST – Five-Time-Sit-to-Stand Test, FTSS – Success without assistance or with upper extremity support.

of older patients. The loss of mobility is also often related to weight loss and/or cachexia in older adults, yet mean BMI and MNA values were normal ($25.7 \pm 5.1 \text{ kg/m}^2$ and 7.9 ± 2.3 , respectively), and did not relate to prognosis.

Our patients are representative of patients from the beginnings of the TAVI procedure, and therefore very high-risk patients. In the new ESC recommendations [29], TAVI takes a greater part of the invasive treatment for symptomatic aortic stenosis. Indeed, TAVI will now be recommended from the age of 75, for patients with lowest surgical risk represented by a STS score $\geq 4\%$ and a logistic EuroSCORE $\geq 10\%$ (compared to 10% and 20% in 2012, respectively) [29]. Consequently, as TAVI will be considered in a larger number of lower risk patients, common medical comorbidities will become less prevalent and might lack accuracy in assessing long-term benefits, providing room for objective geriatric criteria.

The clinical interest of our results stems from showing evidence that TAVI improved overall survival in presumably frail patients, provided that the individual decision was approved by the CGA and heart team. Moreover, even though the present method was not meant to better identify patients who will benefit from TAVI, we highlight the possibility that investigating patients' mobility might be a cornerstone in assessing further prognosis. Whether or not physical training should be

encouraged in patients with loss of mobility remains to be investigated among patients with severe aortic stenosis.

Several limitations should be considered, the first being inherent bias due to it being a retrospective and observational non-randomized study, with a limited sample size. Secondly, our study assessed a very high-risk population, with severe symptomatic aortic stenosis, which was representative of the beginning of the TAVI procedure. Third, while there is evidence that frail older patients with TAVI exhibit higher mortality [30, 31], the proportion of TAVI patients was too low to allow us to study the impact of CGA parameters on prognosis. Finally, other prognostic markers might be investigated. The Charlson comorbidity index is a validated measure of 1-year mortality risk and disease burden [32]. A low serum vitamin D level in older adults has been demonstrated to be associated with cardiovascular risk [32], dementia [33] and all-cause mortality [34].

In conclusion, aortic valve replacement by a TAVI was associated with reduced 1-year mortality among presumed frail older patients with severe aortic stenosis. FTSST was an independent predictor of 1-year mortality in patients with severe aortic stenosis who did not undergo valve replacement.

Conflict of interest

The authors declare no conflict of interest.

References

1. Iung B, Baron G, Butchart EG, et al. A prospective survey of patients with valvular heart disease in Europe: the Euro Heart Survey on Valvular Heart Disease. *Eur Heart J* 2003; 24: 1231-43.
2. Schwarz F, Baumann P, Manthey J, et al. The effect of aortic valve replacement on survival. *Circulation* 1982; 66: 1105-10.
3. Lindman BR, Bonow RO, Otto CM. Current management of calcific aortic stenosis. *Circ Res* 2013; 113: 223-37.
4. Iung B. Decision-making in elderly patients with severe aortic stenosis: why are so many denied surgery? *Eur Heart J* 2005; 26: 2714-20.
5. Carabello BA. Transcatheter aortic-valve implantation for aortic stenosis in patients who cannot undergo surgery. *Curr Cardiol Rep* 2011; 13: 173-4.
6. Bergman H, Ferrucci L, Guralnik J, et al. Frailty: an emerging research and clinical paradigm: issues and controversies. *J Gerontol A Biol Sci Med Sci* 2007; 62: 731-7.
7. Pel-Littel RE, Schuurmans MJ, Emmelot-Vonk MH, Verhaar HJJ. Frailty: defining and measuring of a concept. *J Nutr Health Aging* 2009; 13: 390-4.
8. Wieland D, Hirth V. Comprehensive geriatric assessment. *Cancer Control J Moffitt Cancer Cent* 2003; 10: 454-62.
9. Coylewright M, Mack MJ, Holmes DR, O'Gara PT. A call for an evidence-based approach to the Heart Team for patients with severe aortic stenosis. *J Am Coll Cardiol* 2015; 65: 1472-80.

10. Sintek M, Zajarias A. Patient evaluation and selection for transcatheter aortic valve replacement: the heart team approach. *Prog Cardiovasc Dis* 2014; 56: 572-82.
11. Gilard M, Eltchaninoff H, Lung B, et al.; FRANCE 2 Investigators. Registry of transcatheter aortic-valve implantation in high-risk patients. *N Engl J Med* 2012; 366: 1705-15.
12. Haubois G, de Decker L, Annweiler C, et al. Derivation and validation of a Short Form of the Mini-Mental State Examination for the screening of dementia in older adults with a memory complaint. *Eur J Neurol* 2013; 20: 588-90.
13. Gagliese L, Weizblit N, Ellis W, Chan VWS. The measurement of postoperative pain: a comparison of intensity scales in younger and older surgical patients. *Pain* 2005; 117: 412-20.
14. Kaiser MJ, Bauer JM, Ramsch C, et al. Validation of the Mini Nutritional Assessment short-form (MNA-SF): a practical tool for identification of nutritional status. *J Nutr Health Aging* 2009; 13: 782-8.
15. Vetel JM, Leroux R, Ducoudray JM. AGGIR. Practical use. *Geriatric Autonomy Group Resources Needs. Soins Gerontol* 1998; 13: 23-7.
16. Barberger-Gateau P, Commenges D, Gagnon M, Letenneur L, Sauvel C, Dartigues JF. Instrumental activities of daily living as a screening tool for cognitive impairment and dementia in elderly community dwellers. *J Am Geriatr Soc* 1992; 40: 1129-34.
17. Buatois S, Miljkovic D, Manckoundia P, et al. Five times sit to stand test is a predictor of recurrent falls in healthy community-living subjects aged 65 and older. *J Am Geriatr Soc* 2008; 56: 1575-7.
18. Braunwald's Heart Disease. 10th ed. Mann DL, Braunwald E (eds.) Elsevier, Saunders, Philadelphia, Pa 2015.
19. Chizner MA, Pearle DL, deLeon AC. The natural history of aortic stenosis in adults. *Am Heart J* 1980; 99: 419-24.
20. O'Keefe JH, Vlietstra RE, Bailey KR, Holmes DR. Natural history of candidates for balloon aortic valvuloplasty. *Mayo Clin Proc* 1987; 62: 986-91.
21. Lieberman EB, Bashore TM, Hermiller JB, et al. Balloon aortic valvuloplasty in adults: failure of procedure to improve long-term survival. *J Am Coll Cardiol* 1995; 26: 1522-8.
22. Moat NE, Ludman P, de Belder MA, et al. Long-term outcomes after transcatheter aortic valve implantation in high-risk patients with severe aortic stenosis: the U.K. TAVI (United Kingdom Transcatheter Aortic Valve Implantation) Registry. *J Am Coll Cardiol* 2011; 58: 2130-8.
23. Oguri A, Yamamoto M, Mouillet G, et al. Impact of chronic kidney disease on the outcomes of transcatheter aortic valve implantation: results from the FRANCE 2 registry. *EuroIntervention J Eur Collab Work Group Interv Cardiol Eur Soc Cardiol* 2015; 10: e1-9.
24. Furuta A, Lellouche N, Mouillet G, et al. Impact of previous acute pulmonary oedema after transcatheter aortic valve implantation: insight from French Aortic National CoreValve and Edwards 2 [FRANCE 2] registry. *Int J Cardiol* 2015; 183: 98-104.
25. Montero-Odasso M, Schapira M, Soriano ER, et al. Gait velocity as a single predictor of adverse events in healthy seniors aged 75 years and older. *J Gerontol A Biol Sci Med Sci* 2005; 60: 1304-9.
26. Afilalo J, Eisenberg MJ, Morin JF, et al. Gait speed as an incremental predictor of mortality and major morbidity in elderly patients undergoing cardiac surgery. *J Am Coll Cardiol* 2010; 56: 1668-76.
27. Kano S, Yamamoto M, Shimura T, et al. Gait speed can predict advanced clinical outcomes in patients who undergo transcatheter aortic valve replacement: insights from a Japanese Multicenter Registry. *Circ Cardiovasc Interv* 2017; 10: e005088.
28. Baumgartner H, Falk V, Bax JJ, et al. 2017 ESC/EACTS Guidelines for the management of valvular heart disease. *Eur Heart J* 2017; 38: 2739-91.
29. Anand A, Harley C, Visvanathan A, et al. The relationship between preoperative frailty and outcomes following transcatheter aortic valve implantation: a systematic review and meta-analysis. *Eur Heart J Qual Care Clin Outcomes* 2017; 3: 123-32.
30. Zahn R, Werner N, Gerckens U, et al. Five-year follow-up after transcatheter aortic valve implantation for symptomatic aortic stenosis. *Heart Br Card Soc* 2017; 103: 1970-6.
31. Roffman CE, Buchanan J, Allison GT. Charlson Comorbidities Index. *J Physiother* 2016; 62: 171.
32. Brondum-Jacobsen P, Benn M, Jensen GB, Nordestgaard BG. 25-Hydroxyvitamin D levels and risk of ischemic heart disease, myocardial infarction, and early death: population-based study and meta-analyses of 18 and 17 studies. *Arterioscler Thromb Vasc Biol* 2012; 32: 2794-802.
33. Littlejohns TJ, Henley WE, Lang IA, et al. Vitamin D and the risk of dementia and Alzheimer disease. *Neurology* 2014; 83: 920-8.
34. Pludowski P, Holick MF, Pilz S, et al. Vitamin D effects on musculoskeletal health, immunity, autoimmunity, cardiovascular disease, cancer, fertility, pregnancy, dementia and mortality – a review of recent evidence. *Autoimmun Rev* 2013; 12: 976-89.