

What is the right moment for noninvasive ventilation in amyotrophic lateral sclerosis?

Jovana Maskovic¹, Aleksandra Ilic^{1,2}, Vladimir Zugic^{1,2}, Zorica Stevic^{2,3}, Mihailo I. Stjepanovic^{1,2}

¹Clinic of Pulmonology, Clinical Center of Serbia, Belgrade, Serbia

²Medical Faculty, University of Belgrade, Belgrade, Serbia

³Clinic of Neurology, Clinical Center of Serbia, Belgrade, Serbia

Submitted: 5 April 2019

Accepted: 8 September 2019

Arch Med Sci

DOI: <https://doi.org/10.5114/aoms.2019.90465>

Copyright © 2019 Termedia & Banach

Corresponding author:

Mihailo I. Stjepanovic
Clinic of Pulmonology
Clinical Center of Serbia
Koste Todorovica 26
11000, Belegrade, Serbia
E-mail:
mihailostjepanovic@gmail.com

Abstract

Introduction: The most common cause of death in patients with amyotrophic lateral sclerosis (ALS) is respiratory failure, often in the period of 2–5 years, with a small percentage of patients surviving up to ten years or more. The aim of the study was to evaluate the significance of pulmonary function tests in prediction of mortality and definition of indications for noninvasive mechanical ventilation (NIMV).

Material and methods: This retrospective-prospective study was performed at the Clinic of Pulmonology, Clinical Centre of Serbia in the period from January 2015 to December 2017. Patients with diagnosis of ALS established according to El Escorial criteria were included.

Results: The study included 76 patients with ALS, 50 (65.85%) with spinal and 26 (34.2%) with bulbar form of disease. Forced vital capacity (FVC) and forced expiratory volume in one second (FEV₁) were higher in spinal form of ALS, and the difference was statistically significant when compared to bulbar form. Form of disease, FVC < 70%, maximum inspiratory pressure (PI_{max}) < 50 and maximum expiratory pressure (PE_{max}) < 50 were significant factors for survival. The patients with bulbar form of disease had 2.174 (95.0% CI: 1.261–3.747) higher risk for death.

Conclusions: Our study points to the significance of timely application and early start of NIMV in patients with ALS as an important approach to defer functional impairment, which would mean that the criteria, in our country, for application of these devices must be changed, not only regarding the value of current functional diagnostic tests used in everyday practice in patients with ALS but also in regard to the introduction of new diagnostic tests, such as sniff nasal inspiratory pressure and/or polysomnographic testing.

Key words: pulmonary function, amyotrophic lateral sclerosis, noninvasive ventilation.

Introduction

Amyotrophic lateral sclerosis (ALS) is a progressive neuromuscular disease that causes skeletal muscle weakness, including muscles involved with respiration. Amyotrophic lateral sclerosis belongs to a group of neurological diseases, and affects the upper and lower motor neurons. It is one of the most common motor neuron diseases, and can occur indi-

vidually or as a hereditary family illness. The most common cause of death in these patients is respiratory failure, often in the period of 2–5 years, with a small percentage of patients surviving up to ten years and more. Accordingly, monitoring respiratory status is critical to ALS management. Pulmonary function tests (PFTs) are used for evaluation of respiratory impairment and decision-making including the timing of noninvasive ventilation. Recognizing different respiratory tests in relation to disease progression and survival may help determine which tests are most suitable [1].

Poor prognosis and decreased survival time of patients with ALS correlate with their nutritional status. Various studies have evaluated weight, body mass index (BMI), survival time and ALS Functional Rating Scale-Revised (ALSFRS-R) in order to determine the best nutrition management methods for this patient population [2].

The aim of the study was to determine the significance of pulmonary function tests in prediction of mortality and define indications for noninvasive mechanical ventilation (NIMV).

Material and methods

This cross-sectional retrospective study was performed at the Clinic of Pulmonology, Clinical Centre of Serbia in the period from January 2015 to December 2017. Approval granted by the local ethics committee was not required. Patients with a diagnosis of ALS established according to El Escorial criteria were included [3]. The diagnosis of disease was made at the Clinic of Neurology, Clinical Centre of Serbia.

The following PFTs were performed in all patients: spirometry, impulse oscillometry, maximal inspiratory and expiratory mouth pressures, and arterial blood gases analysis. Spirometry was performed by means of a Lilly's pneumotachometer (MasterScreen Pneumo, Viasys Healthcare, Germany), impulse oscillometry and maximal inspiratory and expiratory pressures (PI_{max} and PE_{max}) at the mouth during occlusion were performed using commercial systems (MasterScreen IOS, Viasys Healthcare, Germany, and MasterScreen Body, Viasys Healthcare, Germany, respectively). The analysis of the arterial blood gasses was also performed on a commercial analyzer (ABL5, Radiometer, Denmark). All PFTs were performed according to European Respiratory Society/American Thoracic Society joint recommendations [4–8].

Informed consent was not obtained because all study procedures were routinely performed in all patients with ALS at our clinic.

The current criteria for assigning the noninvasive mechanical ventilation (NIMV) in our country are forced vital capacity (FVC) less than 50% of the predicted, and global respiratory failure or elevated

bicarbonate levels (more than 27–28 mmol/l) in arterial blood gases analyses. The criteria were determined by the Republic Fund of Health Insurance, which has been providing non-invasive mechanical ventilation devices for home treatment to insured persons since 2007. Since that time, these criteria have been widely accepted as indications for home ventilation in our country.

Blood samples were collected from patients for laboratory analysis (urea [normal values 2.5–7.5 mmol/l], creatinine [normal values 45–84 μ mol/l], creatine kinase (CK) [normal values 0–150 U/l], CK-MB [normal values < 25 U/l]); all tests were performed in an Accredited Medical Laboratory, ATC03-001, SRPS EN 150 15189-2014.

Primary outcome was the time from diagnosis to the establishment of indications for NIMV, as well as the secondary outcome – the time from diagnosis to death.

The outcome was determined by direct contact with patients or their families during regular clinical visits or by telephone contact or with family members when returning the NIMV device.

Results

Descriptive statistics was calculated for the baseline demographic and clinical features. Normality of distribution was tested using graphical and mathematical methods. Continuous variables were presented as means with standard deviations or median with 25th–75th percentile, if required. Categorical variables were reported in numbers and percentages. Differences between groups were analyzed using Student's *t*-test for normally distributed continuous variables or the Mann-Whitney test for non-normally distributed continuous variables and Pearson's χ^2 test for categorical variables.

Survival was computed by means of Kaplan-Meier survival analysis, and two groups were compared using the log-rank test. Cox-regression analysis was used to determine factors influencing survival. The level of significance was set at 0.05. Statistical analysis was performed using the IBM SPSS 21 (Chicago, IL, 2012) package.

The clinical characteristics of patients are presented in Table I. The study included 76 patients with ALS, 50 (65.8%) with spinal and 26 (34.2%) with bulbar form of disease. There was no difference in age, gender or body mass index (BMI) between these two groups. Forced vital capacity and forced expiratory volume in one second (FEV_1) were higher in spinal form of ALS, and the difference was statistically significant when compared to bulbar form. There was no difference in R5HZ, R20HZ, PI_{max} or PE_{max} between the groups. Laboratory parameters – urea, creatinine and creatine kinase (CK) – did not differ between the groups.

Table I. Clinical characteristics of amyotrophic lateral sclerosis patients

Factor	Spinal n = 50 Mean ±SD	Bulbar n = 26 Mean ±SD	P
Age	54.3 ±8.3	53.9 ±10.2	0.870
Sex (male)*	26 (52.0%)	10 (38.5%)	0.262
BMI	25.7 ±6.6	27 ±8.5	0.484
FVC	93.8 ±31.2	78.7 ±26.7	0.039
FEV ₁	94.6 ±32.2	77.4 ±27.9	0.024
R5HZ	83.4 ±41.8	93.3 ±43	0.336
R20HZ	73.4 ±34.6	73.7 ±28.4	0.976
PI _{max}	37.3 ±17.4	32.6 ±12.1	0.173
PE _{max}	39.7 ±25.2	42 ±25.5	0.707
Urea	5.1 ±1.5	5 ±1.4	0.832
Creatinine	58.6 ±15.9	58.6 ±19.7	0.997
CK	153.5 ±60.4	131.8 ±55.8	0.131
CK-MB	4.6 ±1.3	4 ±1.3	0.047

*Data are presented as n (%).

BMI – body mass index, FVC – forced vital capacity, FEV₁ – forced expiratory volume in one second, PI_{max} – maximum inspiratory pressure, PE_{max} – maximum expiratory pressure, CK – creatine kinase

Table II. Factors influencing survival at the time of amyotrophic lateral sclerosis diagnosis

Variable	HR	95% CI for HR		P
		Lower	Upper	
Bulbar form	2.174	1.261	3.747	0.005
FVC < 70%	1.945	1.019	3.713	0.044
R20HZ < 120	0.739	0.315	1.736	0.488
R5HZ < 120	0.669	0.371	1.206	0.181
PI _{max} < 50	1.957	1.014	3.775	0.045
PE _{max} < 50	2.156	1.117	4.162	0.022

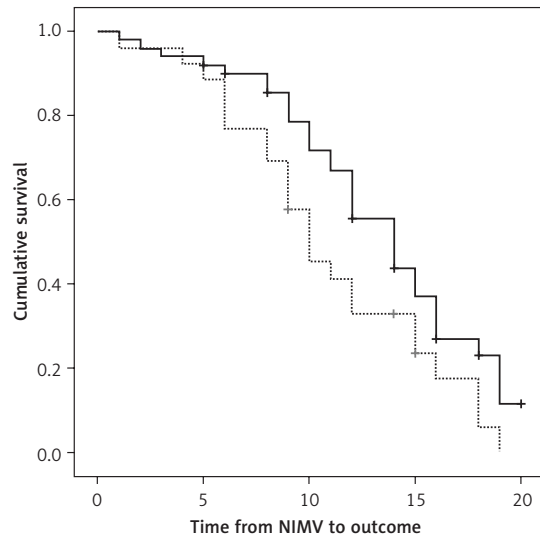
FVC – forced vital capacity, PI_{max} – maximum inspiratory pressure, PE_{max} – maximum expiratory pressure

CK-MB was higher in spinal form, and the difference was statistically significant in comparison with bulbar form.

Mean follow-up time was 31.1 (minimum–maximum 2.0–81.0) months. Overall median survival was 32.0 (95% CI: 28.1–35.9) months from ALS diagnosis to outcome.

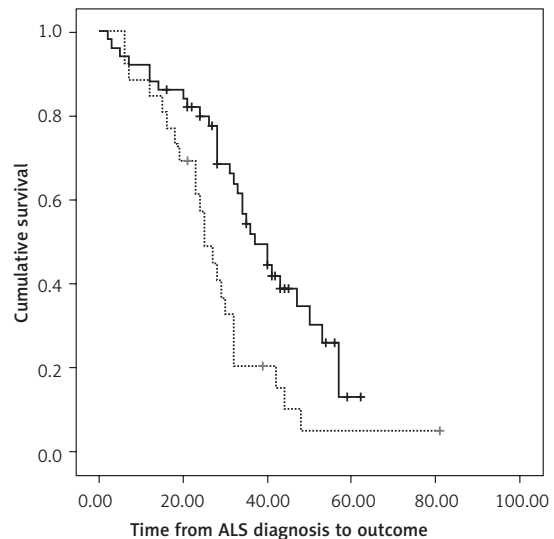
A non-invasive ventilation machine (NIMV) was introduced after a median of 23.0 (12.0–31.0) months in spinal and 13.5 (8.0–23.0) months in bulbar form of disease ($p < 0.05$).

Median survival from NIMV introduction to outcome was 12.0 (95% CI: 9.98–14.03) months. Median survival from NIMV introduction to final outcome (death) in patients with spinal form was



Disease: — Spinal ... Bulbar
+ Spinal – censored + Bulbar – censored

Figure 1. Survival from noninvasive mechanical ventilation (NIMV) between the spinal and bulbar form



Disease: — Spinal ... Bulbar
+ Spinal – censored + Bulbar – censored

Figure 2. Survival from amyotrophic lateral sclerosis (ALS) diagnosis between the spinal and bulbar form

14.0 (95% CI: 11.36–16.64), and 10.0 (95% CI: 7.64–12.35) months in patients with bulbar form of disease (Figure 1). According to the log-rank test, this difference was statistically significant ($p < 0.05$).

Median survival from diagnosis to final outcome (death) in patients with spinal form was 37.0 (95% CI: 29.74–44.26) months, and 25.0 (95% CI: 20.20–29.80) months in patients with bulbar form of disease (Figure 2). According to the log-rank test, this difference was statistically significant ($p < 0.05$).

Cox-regression analysis was performed to determine the effect of pulmonary function parameter values recorded at the time of making the ALS diagnosis to survival, the results being presented in Table II.

Form of disease, $FVC < 70\%$, $PI_{max} < 50$ and $PE_{max} < 50$ were significant factors for survival. $R20HZ < 120$ and $R5HZ < 120$ were not significant factors for survival in patients with ALS. The patients with bulbar form of disease had 2.17 (95% CI: 1.26–3.75) higher risk for death. The patients with $FVC < 70\%$ of disease had 1.94 (95% CI: 1.02–3.71), $PI_{max} < 50$ and $PE_{max} < 50$ 1.96 (95% CI: 1.01–3.77) higher risk.

Discussion

Our study showed that the patients with FVC less than 70% at the time of making their diagnosis as compared to the expected values carried two times higher risk of a lethal outcome. In addition, it was noted that the values of PI_{max} and PE_{max} lower than 80% in relation to the expected values represented a twice-higher risk of lethal outcome. On the other hand, impulse oscillometry parameters did not show any significant association with the length of survival of these patients.

A large number of former cross-section studies have pointed to FVC limitations in detecting an early respiratory dysfunction. It is questionable whether the employment of the FVC value is a relevant criterion as well as whether its value should be confined to the decision on timely application of NIMV [9–11]. In the study by Gordon *et al.*, 50 patients having required tracheotomy underwent spirometry tests and their FVC values were recorded 30 days prior to the aforesaid event; FVC was 50% of the expected value or higher in 11 patients, 60% of the expected value or higher in 7 patients and 70% of the expected value or higher in 5 patients. All the aforementioned data indicate a possible disadvantage of FVC as a tool for evaluation of patient survival [12].

Longitudinal follow-up of ALS patients by Polkey *et al.* confirmed that the differences in FVC values showed low amplitudes either until death occurred or need for NIMV appeared, while the values of respiratory muscle tests manifested significant amplitudes; accordingly, it directly suggested that the measurement of respiratory muscle strength could be a more beneficial marker for assessing the most optimal timing of NIMV application [13, 14].

Forced vital capacity values during the maneuver of spirometry testing with the patient assuming a recumbent position designated the preservation of diaphragmal musculature strength. Lechtzin *et al.* recommended applying NIMV in all patients with $FVC < 70\%$ recorded during spirome-

try in a lying position [12]. Polkey *et al.* underlined the inferiority of the FVC value in ALS patients. This study pointed to worse prognosis in patients whose value of this parameter was even higher than 80% and in whom the NIMV was not started yet [14–16].

Measurement of the maximum static inspiratory pressure that a subject can generate at the mouth (PI_{max}) or the maximum static expiratory pressure (PE_{max}) is a simple way to gauge inspiratory and expiratory muscle strength. The pressure measured during these maneuvers reflects the pressure developed by the respiratory muscles (P_{mus}), plus the passive elastic recoil pressure of the respiratory system including the lung and the chest wall (P_{rs}) [17–21].

When respiratory muscle weakness occurs, PI_{max} can be more sensitive than VC because the relationship between VC and PI_{max} is curvilinear, so that decreases in respiratory muscle strength which develop before decreases in lung volume can be identified [22, 23].

Different studies have confirmed that the strength of respiratory muscles is one of the more significant prognostic markers in ALS patients; a recent study has underscored the need for adequate physical rehabilitation for musculature strengthening. The research studies suggest that this program of respiratory physical rehabilitation is well tolerated and leads to improvement of respiratory and bulbar functions [16].

During routine pulmonary function testing of ALS patients, it has been noted that some of them have elevated R20 and R5. Our study, however, did not find any correlation between the values of impulse oscillometry and time of survival of ALS patients ($p = 0.488$ for R20Hz and $p = 0.181$ for R5Hz), in spite of our high expectations that the patients with higher values of extrathoracic and intrathoracic airways resistance would have shorter time of survival. It is particularly true if we inspect the results suggesting that the time of survival in patients with bulbar disease is significantly shorter than in patients with the spinal form of the condition. Anyway, these results call for additional research in future as well as an analysis of the potential prognostic significance of airway resistance.

Presently recommended Medicare criteria (a federal government website managed and paid for by the U.S. Centers for Medicare & Medicaid Services) for NIMV application in ALS patients include any of the following: $FVC < 50\%$ of the expected, $SAT O_2 < 88\%$ during at least 5 min, and $PaCO_2 > 44$ mm Hg. Upon updating the American Academy of Neurology Database, two additional criteria were added, sniff nasal inspiratory pressure (SNIP) < 40 cm H_2O and orthopnea, which may justify

the introduction of noninvasive ventilation. In our country, the criteria of providing home care NIMV are FVC < 50% of the expected, and global respiratory insufficiency with $\text{HCO}_3^- > 28$ mmol/l obtained from arterial blood gas analysis. The study by Vita-*et al.* revealed that the NIMV, in the Italian pulmonological units, was introduced in patients with neuromuscular conditions in case of diurnal hypercapnia, nocturnal desaturation and FVC < 50% of expected. Nevertheless, a large number of centers take the position that mere presence of symptoms such as dyspnea or orthopnea are adequate criteria for starting the ventilation [24].

The above result is immensely significant given that, in our country, the indication for NIMV application is FVC below 50%. But, our results demonstrate that FVC is a powerful predictive factor.

Our study has several limitations. First of all, measurement of maximal SNIP was not performed in our patients due to lack of equipment. SNIP has been shown to be strongly correlated with maximal sniff oesophageal pressure [25], is well established as a non-invasive method for assessing inspiratory muscle strength [26], and its values better correlate with onset of respiratory failure than FVC [27]. Next, SVC measurement was also not performed in our patients, despite the fact that change in SVC predicts respiratory failure or death in patients with ALS [28]. Similarly, nocturnal hypoventilation, known to be associated with poor prognosis, has not been studied in this analysis, in spite of the fact that an increasing number of experts nowadays believe that nocturnal hypoventilation is an indication of NIMV [18]. Finally, other prognostic factors in ALS, such as delay from symptom onset to diagnosis [29], progression rate of revised ALS Functional Rating Scale (ALSFRS-R) score [30], psychological distress [31], and frontotemporal lobar dementia [32], were not taken into account. All these factors, and several more, strongly affect quality of life and have an influence on survival of patients with ALS. A couple of prognostic scores based on mentioned and other parameters were developed for patients with ALS [33, 34]. Excluding these factors from our analysis could potentially have an influence on the results of this study, despite the fact that decline in lung function, measured primarily by FVC [35–37], is a strong independent prognostic factor in ALS.

The increasing number of clinicians and the authors of scientific and research papers agree on the fact that the sequential diagnostic procedures, especially if used in combination with sophisticated techniques as described by Carreiro *et al.*, could offer an alternative predictive strategy [17].

In conclusion, our study points to the significance of timely application and early start of NIMV in patients with ALS as an important approach to

defer functional impairment, which would mean that the criteria, in our country, for application of these devices must be changed, not only regarding the value of current functional diagnostic tests used in everyday practice in patients with ALS but also in regard to the introduction of new diagnostic tests, such as SNIP and/or polysomnographic testing.

Conflict of interest

The authors declare no conflict of interest.

References

1. Lechtzin N, Cudkowicz ME, de Carvalho M, Genge A, Hardiman O, Mitsumoto H. Respiratory measures in amyotrophic lateral sclerosis. *Amyotroph Lateral Scler Frontotemporal Degener* 2018; 19: 321-30.
2. Kellogg J, Bottman L, Arra EJ, Selkirk SM, Kozlowski F. Nutrition management methods effective in increasing weight, survival time and functional status in ALS patients: a systematic review. *Amyotroph Lateral Scler Frontotemporal Degener* 2018; 19: 7-11.
3. Brooks BR, Miller RG, Swash M, Munsat TL, World Federation of Neurology Research Group on Motor Neuron Diseases. El Escorial revised: world Federation of Neurology Criteria for the diagnosis of amyotrophic lateral sclerosis. *Amiotroph Lateral Scler Other Motor Criteria for the diagnosis of amyotrophic lateral sclerosis. Amyotroph Lateral Scler Other Motor Neuron Disord* 2000; 1: 293-9.
4. Miller MR, Hankinson J, Brusasco V, et al. Standardisation of spirometry. *Eur Respir J* 2005; 26: 319-38.
5. Smith HJ, Reinhold P, Goldman MD. Forced oscillation technique and impulse oscillometry. *Eur Respir Mon* 2005; 31: 72-105.
6. Troosters T, Gosselink R, Decramer M. Respiratory muscle assessment. *Eur Respir Mon* 2005; 31: 57-71.
7. Roca J, Rabinovich R. Clinical exercise testing. *Eur Respir Mon* 2005; 31: 146-65.
8. Hughes JMB. Pulmonary gas exchange. *Eur Respir Mon* 2005; 31: 106-26.
9. Raaphorst J, Tuijp J, Verweij L, et al. Treatment of respiratory impairment in patients with motor neuron disease in the Netherlands: patient preference and timing of referral. *Eur J Neurol* 2013; 20: 1524-30.
10. Capozzo R, Quaranta VN, Pellegrini F, et al. Sniff nasal Inspiratory pressure as a prognostic factor of tracheostomy or death in amyotrophic lateral sclerosis. *J Neurol* 2015; 262: 593-603.
11. Morgan RK, McNally S, Alexander M, Conroy R, Hardiman O, Costello RW. Use of sniff nasal Inspiratory force to predict survival in ALS. *Am J Respir Crit Care Med* 2005; 171: 269-74.
12. Lechtzin N, Wiener CM, Shade DM, Clawson L, Diette GB. Spirometry in the supine position improves the detection of diaphragmatic weakness in patients with amyotrophic lateral sclerosis. *Chest* 2002; 121: 436-42.
13. Gordon PH, Corcia P, Lacomblez L, et al. Defining survival as an outcome measure in amyotrophic lateral sclerosis. *Arch Neurol* 2009; 66: 758-61.
14. Polkey M, Lyall R, Yang K, Johnson E, Leigh N, Moxham J. Respiratory muscle strength as a predictive biomarker for survival in amyotrophic lateral sclerosis. *Am J Respir Crit Care Med* 2017; 195: 86-95.

15. Wijesekera LC, Leigh PN. Amyotrophic lateral sclerosis. *Orphanet J Rare Dis* 2009; 4: 3.
16. Hamnegård CH, Wragg SD, Mills GH, et al. Clinical assessment of diaphragm strength by cervical magnetic stimulation of the phrenic nerves. *Thorax* 1996; 51: 1239-42.
17. Carreiro AV, Amaral PM, Pinto S, Tomás P, de Carvalho M, Madeira SC. Prognostic models based on patient snapshots and time windows: predicting disease progression to assisted ventilation in amyotrophic lateral sclerosis. *J Biomed Inform* 2015; 58: 133-44.
18. Vrijsen B, Buyse B, Belge C, et al. Noninvasive ventilation improves sleep in amyotrophic lateral sclerosis: a prospective polysomnographic study. *J Clin Sleep Med* 2015; 11: 559-66.
19. Calverley PMA. Control of breathing. In: *Lung Function Testing: European Respiratory Monograph*. Gosselink R, Stam H (eds.). European Respiratory Society 2005.
20. Troosters T, Gosselink R, Decramer M. Respiratory muscle assessment. *Eur Respir Mon* 2005; 31: 57-71.
21. Stanojevic S, Hall GL. Reference values for spirometry: the way forward for our patients. *Respirology* 2011; 16: 869.
22. Stanojevic S, Wade A, Stocks J. Reference values for lung function: past, present and future. *Eur Respir J* 2010; 36: 12-9.
23. Evans JA, Whitelaw WA. The assessment of maximal respiratory mouth pressures in adults. *Respir Care* 2009; 54: 1348-59.
24. Aboussouan LS, Mireles-Cabodevila E. Respiratory support in patients with amyotrophic lateral sclerosis. *Respir Care* 2013; 58: 1555-8.
25. Heritier F, Rahm F, Pasche P, Fitting JW. Sniff nasal inspiratory pressure. A non-invasive assessment of inspiratory muscle strength. *Am J Respir Crit Care Med* 1994; 150: 1678-83.
26. Uldry C, Fitting JW. Maximal values of sniff nasal inspiratory pressure in healthy subjects. *Thorax* 1995; 50: 371-5.
27. Lyall RA, Donaldson N, Polkey MI, Leigh PN, Moxham J. Respiratory muscle strength and ventilatory failure in ALS. *Brain* 2001; 124: 200-13.
28. Andrews JA, Meng L, Kulke SF, et al. Association between decline in slow vital capacity and respiratory insufficiency, use of assisted ventilation, tracheostomy, or death in patients with amyotrophic lateral sclerosis. *JAMA Neurol* 2018; 75: 58-64.
29. Testa D, Lovati R, Ferrarini M, Salmoiraghi F, Filippini G. Survival of 793 patients with amyotrophic lateral sclerosis diagnosed over a 28-year period. *Amyotroph Lateral Scler* 2004; 5: 208-12.
30. Kimura F, Fujimura C, Ishida S, et al. Progression rate of ALSFRS-R at time of diagnosis predicts survival time in ALS. *Neurology* 2006; 66: 265-7.
31. McDonald E, Wiedenfeld SA, Hillel A, Carpenter CL, Walter RA. Survival in amyotrophic lateral sclerosis. The role of psychological factors. *Arch Neurol* 1994; 51: 17-23.
32. Armon C, Brandstater ME. Motor unit number estimate based rates of progression of ALS predict patient survival. *Muscle Nerve* 1999; 22: 1571-5.
33. Elamin M, Bede P, Montuschi A, Pender N, Chio A, Hardiman O. Predicting prognosis in amyotrophic lateral sclerosis: a simple algorithm. *J Neurol* 2015; 262: 1447-54.
34. Westeneng HJ, Debray TPA, Visser AE, et al. Prognosis for patients with amyotrophic lateral sclerosis: development and validation of a personalised prediction model. *Lancet Neurol* 2018; 17: 423-33.
35. Chiò A, Mora G, Leone M, et al. for the Piemonte and Valle d'Aosta Register for ALS. Early symptom progression rate is related to ALS outcome: a prospective population-based study. *Neurology* 2002; 59: 99-103.
36. Armon C, Moses D. Linear estimates of rates of disease progression as predictors of survival in patients with ALS entering clinical trials. *J Neurol Sci* 1998; 160 (Suppl 1): S37-41.
37. Magnus T, Beck M, Giess R, Naumann M, Toyka KV. Disease progression in amyotrophic lateral sclerosis: predictors of survival. *Muscle Nerve* 2002; 25: 709-14.