

Protective mechanism of kaempferol against $A\beta_{25-35}$ -mediated apoptosis of pheochromocytoma (PC-12) cells through the ER/ERK/MAPK signalling pathway

Ning Zhang^{1,2,3}, Hongdan Xu¹, Yueying Wang², Yuan Yao¹, Guoliang Liu¹, Xia Lei¹, Huifeng Sun², Xiuhong Wu², Jianmin Li⁴

¹Jiamusi College, Heilongjiang University of Chinese Medicine, Harbin, China

²College of Pharmacy, Heilongjiang University of Chinese Medicine, Harbin, China

³Key Laboratory of Chinese Materia Medica (Ministry of Education), Heilongjiang University of Chinese Medicine, Harbin, China

⁴First Affiliated Hospital, Heilongjiang University of Chinese Medicine, Harbin, China

Submitted: 24 July 2019; **Accepted:** 21 November 2019;

Online publication: 25 August 2020

Arch Med Sci 2021; 17 (2): 406–416

DOI: <https://doi.org/10.5114/aoms.2020.98199>

Copyright © 2020 Termedia & Banach

Corresponding authors:

Dr Xiuhong Wu
College of Pharmacy
Heilongjiang University
of Chinese Medicine
Harbin, China
E-mail: wxh8088@163.com

Dr Jianmin Li
First Affiliated Hospital
Heilongjiang University
of Chinese Medicine
Harbin, China
E-mail: ljm_1030@126.com.

Abstract

Introduction: Progressive accumulation of amyloid- β ($A\beta$) is a pathological trait of Alzheimer's disease (AD). Amyloid- β increases free radical production in neuronal cells, leading to neuronal cell death. Hormone replacement therapy can reduce the incidence of AD, and oestrogen significantly improves the clinical signs in patients with AD. However, the long-term use of oestrogen causes a variety of diseases. Phytoestrogens have been reported to bind and activate oestrogen receptors in mammals and humans to produce oestrogen-like or anti-oestrogen-like effects. Kaempferol is a flavonoid phytoestrogen that can produce a certain protective effect in neurons. However, the molecular mechanism of kaempferol in AD is unclear.

Material and methods: This study used pheochromocytoma (PC-12) cells that were damaged by $A\beta_{25-35}$ as an *in vitro* model of AD, and oestradiol was a positive control. The cells were incubated with kaempferol alone or in combination with fulvestrant (an antagonist of ER) and U0126 (an inhibitor of ERK) in $A\beta_{25-35}$ culture. Cell activity was measured by the MTT method. Cell apoptosis was evaluated by flow cytometry. Gene and protein expression levels were tested by qRT-PCR and Western blotting.

Results: This study demonstrated that kaempferol protected PC-12 cells from $A\beta_{25-35}$ -induced cell death and apoptosis in a dose-dependent manner. Treatment with fulvestrant (an antagonist of ER) and U0126 (an inhibitor of ERK) significantly increased the apoptosis of PC-12 cells. Moreover, kaempferol promoted the expression of anti-apoptotic molecules and inhibited the expression of pro-apoptotic molecules, which were blocked by fulvestrant and U0126.

Conclusions: Kaempferol protected PC-12 cells against $A\beta_{25-35}$ -induced cell apoptosis through the ER/ERK/MAPK signalling pathway.

Key words: Alzheimer's disease, kaempferol, pheochromocytoma, oestrogen receptors, MAPK signalling pathway.

Introduction

Alzheimer's disease (AD) is a common neurodegenerative disease [1]. Studies have shown that AD accounts for more than half of all patients

whose main clinical symptoms are progressive cognitive decline [2, 3]. The pathology of AD is defined as extracellular aged pigment deposition and intracellular tangled neurofibrils and selective loss of synapses and neurons [4]. A common characteristic of AD is amyloid- β (A β) accumulation [5]. Amyloid- β , a 39–43 amino acid peptide, is produced by amyloid precursor protein cleavage [6]. Between the two A β s, A β_{25-35} exerts neurotoxic effects such as learning and memory impairment, neuronal apoptosis, and oxidative stress. Therefore, A β_{25-35} is used to establish AD models for studying the neurotoxic properties of A β and for drug screening [7].

Studies have shown that the generation of AD is closely related to cell apoptosis [8–10]. Cell apoptosis occurs in primary neurons and neuronal cells when exposed to A β [6, 11]. Researchers found that a large number of apoptotic neurons existed in the brains of AD patients and that programmed cell death played an important role in central nervous development and the adult central nervous system [12]. Regarding cell apoptosis, previous studies demonstrated that the mitogen-activated protein kinase (MAPK) signalling pathway was of vital importance [13, 14]. MAPK is an intracellular serine/threonine protein kinase, which mainly consists of extracellular signal-regulated kinase 1/2 (ERK1/2), Jun N-terminal kinase (JNK) and p38-MAPK signal transduction pathways [14]. The MAPK/ERK cascade plays a very key role in cell growth, development, differentiation and apoptosis [15]. Runden *et al.* believed that brain injury activates ERK1/2 and increases p-ERK1/2 to mediate the death of neurons [16].

The occurrence of AD is associated with sex, and hormone replacement therapy reduces the incidence of AD for perimenopausal and postmenopausal women [17–19]. However, the long-term use of oestrogen increases breast cancer, endometrial cancer, stroke, and the risk of heart disease and other diseases [20]. Phytoestrogens have been reported as a safe choice to replace oestrogen, which could counter the toxic effect of A β_{25-35} and protect nerve cells treated with A β [21–23]. Kaempferol, a type of phytoestrogen, is a flavonoid that can prevent cancer, antagonize inflammation and microorganisms, and produce a certain protective effect on neurons [24–26]. Previous studies have confirmed that kaempferol could be used as a possible therapeutic agent against the progression of AD [27, 28]. However, the molecular mechanism involved is unclear, and further studies are needed to clarify this issue.

In this study, we explored the underlying molecular mechanisms of kaempferol against the progression of AD. The results showed that kaempferol protected pheochromocytoma (PC-12) cells from A β_{25-35} -induced cell death, promoted

the expression of anti-apoptotic molecules and inhibited the expression of pro-apoptotic molecules. Our results suggest that the inhibition of apoptosis by kaempferol is mediated, at least in part, through the ER/ERK/MAPK signalling pathway.

Material and methods

Cell culture and experimental design

PC-12 cells were purchased from the cell bank of the Chinese Academy of Sciences and cultured in DMEM complete medium under standard conditions (37°C, 21% O₂ and 5% CO₂). DMEM basic culture medium, foetal bovine serum and dual antibodies were evenly mixed at a ratio of 89 : 10 : 1, and then DMEM complete culture medium was prepared and stored at 4°C for later use. After adding the appropriate complete culture solution, the resuscitated cells were inoculated in culture bottles at 37°C and 5% CO₂. The solution was changed every 24 h. When the cells grew to approximately 80% confluence, 0.25% (w/v) trypsin solution was used to digest the cells for passage.

The PC-12 cells at the logarithmic growth stage were cultured in culture bottles and placed in incubators at 37°C and 5% CO₂. After 24 h, the cells were divided into the following groups: the blank group was cultured in DMEM only; the control group was cultured in DMEM with DMSO; the A β_{25-35} group was cultured in DMEM for 4 h, and A β_{25-35} (20 μ M) was added for another 24 h; the oestradiol group was cultured in different concentrations (10⁻², 10⁻³, 10⁻⁴, 10⁻⁵, and 10⁻⁶ μ M) of oestradiol for 4 h, and A β_{25-35} (20 μ M) was added for another 24 h; the kaempferol group was cultured in different concentrations (10⁻², 10⁻³, 10⁻⁴, 10⁻⁵, and 10⁻⁶ μ M) of kaempferol for 4 h, and A β_{25-35} (20 μ M) was added for another 24 h; the kaempferol + fulvestrant group was pretreated with 1 μ M fulvestrant for 1 h, cultured in 10⁻³ μ M kaempferol for 4 h, and A β_{25-35} (20 μ M) was added for another 24 h; and the kaempferol + U0126 group was pretreated with 10 μ M U0126 culture for 20 min, cultured in 10⁻³ μ M kaempferol for 4 h, and A β_{25-35} (20 μ M) was added for another 24 h. The cell vitality, apoptosis rate and the expression of proteins and genes were detected under the same experimental conditions.

MTT assay

The MTT assay measures cell proliferation rate and cell viability by chromogenic changes in MTT dye. The cells were seeded in a flat-bottomed 96-well microplate in quintuplicate, and 20 μ l of MTT (5 mg/ml) was added to each well. After incubation for 4 h at 37°C, 200 μ l of DMSO was added. The absorbance at 570 nm was determined using a microplate reader (MK3, Thermolectric, China).

Detection of apoptosis by flow cytometric analysis

Cell apoptosis was quantitatively detected by flow cytometry using an HPC-150 (HPC-150, Handyem, Canada) apoptosis detection kit (BD Pharmingen, USA). Briefly, PC-12 cells were collected by centrifugation (1000 rpm, 15 min) after trypsinization with trypsin (SH30042.01, HyClone, USA). Subsequently, the cells were resuspended in phosphate buffered solution (PBS) and counted. $4-12 \times 10^4$ cells were added per group and stained with 195 μ l of Annexin V-FITC solution according to the manufacturer's instructions. Then, 5 μ l of Annexin V-FITC and 10 μ l of PI were added. Finally, the PC-12 cells were analysed for the apoptotic cell ratio.

Quantitative real-time PCR

Quantitative real-time PCR (qRT-PCR) was used to detect the mRNA expression levels of Bcl-2, Bax and caspase-3. Total RNA was extracted using TRIzol reagent (Invitrogen, USA) and then reverse-transcribed into cDNA using an AMV first strand cDNA synthesis kit (B532445, Sangon, China) according to the manufacturer's instructions. The concentration of RNA was measured using a Nano-100 micro spectrophotometer. The ratio of nucleic acids at 260 nm and 280 nm was used to evaluate the purity of the RNA (nucleic acid has strong absorption near 260 nm and protein has strong absorption near 280 nm). The closer the ratio of nucleic acids at 260 nm and 280 nm is to 2.0, the higher the RNA purity. The RNA obtained in this experiment had

a high concentration and purity, as shown in Table I. Primers designed by Primer Premier Version 5.0 software are shown in Table II. The amplification and melting curves of Bcl-2, Bax, Caspase-3 and β -actin are also shown (Figure 1). To investigate the expression of mRNA, cDNA was amplified using a SGExcel UltraSYBR Mixture (B532956, Sangon, China) in a standard volume of 20 μ l, which included 10 μ l of master mix, 0.4 μ l of forward primer, 0.4 μ l of reverse primer, 0.8 μ l of cDNA, and 8.4 μ l of nuclease-free water. PCR amplification was performed using the following protocol: 95°C for 3 min and then 40 cycles of 95°C for 20 s, and 60°C for 30 s. Standard curves were run in each assay, which produced a linear plot of the cycle threshold (*Ct*) against log (dilution). The expression levels of the target gene were quantified based on the concentration of the standard curve and are presented as relative *Ct* values. The transcription level of β -actin served as a loading control.

Western blot analysis

Protein levels were detected by Western blotting, with β -actin as an internal reference protein. PC-12 cells were homogenized using RIPA lysis buffer (Invitrogen, USA). The protein concentration was quantified with a BCA protein kit (P0012S, Beyotime), and the absorbance values were measured at 562 nm. Equal amounts of protein samples were separated by 10% sodium dodecyl sulfate polyacrylamide gel electrophoresis (SDS-PAGE) and transferred to PVDF membranes (MAB1532, Merck Millipore, Billerica, MA, USA). Subsequently, the transferred PVDF membranes

Table I. Quality and quantity of RNA

Groups	Mass concentration [mg/l]	Absorbance (OD)
Blank	160.372 \pm 6.619	1.8995 \pm 0.0487
A β_{25-35}	156.779 \pm 9.276*	1.8991 \pm 0.0275**
Kaempferol	155.915 \pm 3.242**#	1.8979 \pm 0.0219***##
Oestradiol	178.660 \pm 11.353**#	1.8966 \pm 0.0323***##
Kaempferol + fulvestrant	183.216 \pm 7.628**#&	1.8995 \pm 0.0437***##&
Kaempferol + U0126	173.273 \pm 8.536**#&	1.8991 \pm 0.0298***##&

Compared with blank group, **p* < 0.05 and ***p* < 0.01; compared with A β_{25-35} group, **p* < 0.05 and ***p* < 0.01; compared with kaempferol group, #*p* < 0.05 and &*p* < 0.01.

Table II. Primers used for real-time PCR

Gene	Forward (5'-3')	Reverse (3'-5')
β -actin	TGTCACCAACTGGGACGATA	GGGGTGTGAAGGTCTCAA
Caspase-3	TGACTGGAAAGCCGAACT	GGGTGCGGTAGAGTAAGCAT
Bcl-2	AGCCTGAGAGCAACCGAAC	AGCGACGAGAGAAGTCATCC
Bax	TGCTACAGGGTTTCATCCAG	ATGTTGTTGTCCAGTTCATCG

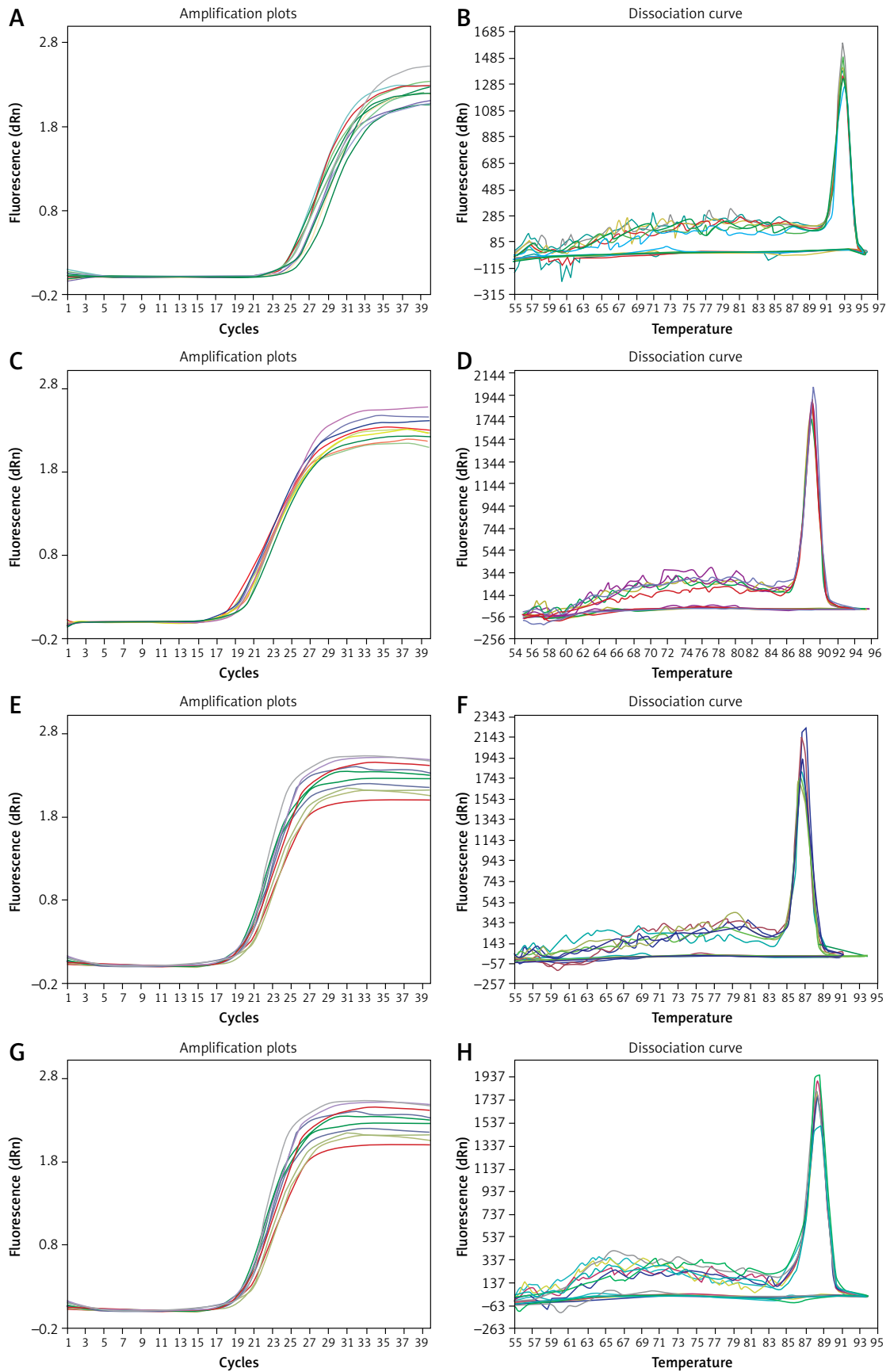


Figure 1. Amplification and melting curves of Bcl-2, Bax, caspase-3 and β -actin. **A** – amplification curve of Bcl-2, **B** – melting curve of Bcl-2, **C** – amplification curve of Bax, **D** – melting curve of Bax, **E** – amplification curve of caspase-3, **F** – melting curve of caspase-3, **G** – amplification curve of β -actin, **H** – melting curve of β -actin

were blocked with 5% non-fat milk in TBST for 1 h at room temperature and then incubated with the appropriate concentration of primary antibodies (Bcl-2, PR-0257, Bax, PR-0258, Caspase-3, ZS-71408, Zsbio Commerce Store, China; ER β , bs-0116R, p-ERK1/2, bs-3292R, BOSTER, Wuhan, China) at 4°C overnight. On the second day, after washing three times in TBST, the PVDF membranes were incubated with HRP-conjugated goat anti-rabbit IgG (H+L) secondary antibodies (BA1054, BOSTER, Wuhan, China) for 2 h at 37°C. The immunoreactive bands were visualized with an enhanced chemiluminescence (ECL) kit (P0018S, Beyotime, Shanghai, China), and grey values were analysed using a Lane ID gel analysis system.

Statistical analysis

Statistical analyses were completed using SPSS 18.0 software. All data are presented as the mean \pm SD (standard deviation) from the results of at least three independent experiments. Statistical analysis among multiple groups was analysed by one-way analysis of variance (ANOVA), and comparisons among groups were performed using Tukey's test. A value of $p < 0.05$ was considered statistically significant.

Results

Kaempferol rescued PC-12 cell viability

The cytotoxicity of A β_{25-35} at different concentrations (0.1, 1, 10, and 20 μ M) was examined by MTT assay. According to the results, the proliferation rate of the control group had no clear change, and the A β_{25-35} group had significantly reduced viability in a dose-dependent manner compared with that of the blank group ($p < 0.01$). Then, 20 μ M

A β_{25-35} was selected as the final concentration because of its apparent effect on cell damage. Compared with the proliferation rate in the A β_{25-35} group, the cell proliferation rate in the oestradiol group was significantly higher ($p < 0.01$) at different concentrations (10^{-2} , 10^{-3} , 10^{-4} , 10^{-5} , and 10^{-6} μ M). Treatment with 10^{-3} μ M oestradiol induced a clear protective effect on PC-12 cells against damage by A β_{25-35} , and so this concentration was used for subsequent studies (Table III).

To investigate the possible protective effects of kaempferol, we evaluated PC-12 cell viability in the presence of A β_{25-35} at different concentrations. Approximately 78% of PC-12 cells survived after treatment with 20 μ M A β_{25-35} , and PC-12 cell viability increased to 97%, 94%, 89%, 81% and 80% when pretreated with 10^{-2} , 10^{-3} , 10^{-4} , 10^{-5} and 10^{-6} μ M kaempferol, respectively (Table IV). Therefore, these results showed that kaempferol could protect PC-12 cells from A β_{25-35} -induced cell death and apoptosis in a dose-dependent manner. Subsequently, 10^{-3} μ M kaempferol was used for further studies.

We further tested the effects of fulvestrant (an ER antagonist) and U0126 (an ERK inhibitor) on PC-12 cell activity. The results showed that different concentrations of fulvestrant (0, 10^{-2} , 10^{-1} , 1, 10, 10^2 and 10^3 M) and U0126 (0, 10^{-3} , 10^{-2} , 10^{-1} , 1, 10 and 10^2 M) had no significant effect on the proliferation of PC-12 cells (Tables V and VI). The final concentrations of fulvestrant and U0126 were 1 mol/l and 10 mol/l, respectively, and the proliferation rates were nearly 100.

Kaempferol inhibits PC-12 cell death through ER and ERK

PC-12 cell death was analysed by Hoechst/PI staining. The results showed that A β_{25-35} markedly

Table III. Effects of oestradiol on activity of PC-12 cells damaged by A β_{25-35} (\pm S, $n = 6$)

Groups	Concentration [μ mol/l]	Absorbance (OD)	Cell proliferation rate (%)
Blank	–	0.609 \pm 0.003	100
Control	–	0.609 \pm 0.005**	100**
A β_{25-35}	20	0.448 \pm 0.009**	74**
Oestradiol + A β_{25-35}	10	0.409 \pm 0.004****	67****
	1	0.480 \pm 0.003****	79****
	10^{-1}	0.520 \pm 0.005****	85****
	10^{-2}	0.572 \pm 0.005****	94****
	10^{-3}	0.609 \pm 0.005##	100##
	10^{-4}	0.603 \pm 0.003##	99##
	10^{-5}	0.598 \pm 0.004##	98##
	10^{-6}	0.580 \pm 0.005****	95****

Compared with blank group, * $p < 0.05$ and ** $p < 0.01$; compared with A β_{25-35} group, ## $p < 0.01$.

Table IV. Effects of kaempferol on activity of PC-12 cells damaged by A β_{25-35} (\pm SD, $n = 6$)

Groups	Concentration [μ mol/l]	Absorbance (OD)	Cell proliferation rate (%)
Blank	–	0.614 \pm 0.009	100
Control	–	0.613 \pm 0.004**	100**
A β_{25-35}	20	0.481 \pm 0.011**	78**
Kaempferol + A β_{25-35}	10	0.465 \pm 0.012**	76**
	1	0.477 \pm 0.008**	78**
	10 ⁻¹	0.568 \pm 0.007***	93***
	10 ⁻²	0.598 \pm 0.008##	97##
	10 ⁻³	0.577 \pm 0.008***	94***
	10 ⁻⁴	0.547 \pm 0.006***	89***
	10 ⁻⁵	0.495 \pm 0.027**	81**
	10 ⁻⁶	0.491 \pm 0.027**	80**

Compared with blank group, * $p < 0.05$ and ** $p < 0.01$; compared with A β_{25-35} group, ## $p < 0.01$.

Table V. Effects of fulvestrant on PC-12 cells' activity (\pm SD, $n = 6$, time = 24 h)

Concentration [mol/l]	Absorbance (OD)	Cell proliferation rate (%)
0	0.382 \pm 0.039	100
10 ⁻²	0.375 \pm 0.020	98
10 ⁻¹	0.401 \pm 0.067	105
1	0.377 \pm 0.027	99
10 ¹	0.415 \pm 0.042	109
10 ²	0.414 \pm 0.042	108
10 ³	0.408 \pm 0.031	107

Table VI. Effects of U0126 on PC-12 cells' activity (\pm SD, $n = 6$, time = 24 h)

Concentration [mol/l]	Absorbance (OD)	Cell proliferation rate (%)
0	0.400 \pm 0.039	100
10 ⁻³	0.421 \pm 0.036	105
10 ⁻²	0.391 \pm 0.049	98
10 ⁻¹	0.384 \pm 0.041	96
1	0.386 \pm 0.038	97
10	0.396 \pm 0.039	99
10 ²	0.385 \pm 0.051	96

increased the percentage of apoptosis compared with that of the blank group ($p < 0.01$). The addition of oestradiol and kaempferol markedly attenuated PC-12 cell apoptosis compared with that of the A β_{25-35} group ($p < 0.01$). However, with the addition of fulvestrant and U0126, the apoptotic rate of PC-12 cells was significantly increased ($p < 0.01$). This indicated that kaempferol might inhibit PC-12 A β_{25-35} -mediated cell death through the ER and ERK signalling pathways (Figure 2).

Kaempferol regulates mRNA levels of genes related to apoptosis in PC-12 cells through ER and ERK

To further test our results, we measured the mRNA levels of genes related to cell apoptosis. The results showed that the expression of pro-apoptotic genes (Bax and caspase-3) was upregulated and that the anti-apoptotic molecule (Bcl-2) was downregulated in the A β_{25-35} group compared with those of the blank group ($p < 0.01$). Oestradiol and kaempferol significantly decreased the expression of

the pro-apoptotic molecules (Bax and caspase-3) and increased the expression of the anti-apoptotic molecule (Bcl-2), whereas the antagonist fulvestrant and inhibitor U0126 partially reversed these effects of kaempferol ($p < 0.01$) (Figure 3).

Kaempferol regulates protein levels of genes related to apoptosis in PC-12 cells through ER and ERK

We further investigated the expression of related proteins. The results showed that the expression of pro-apoptotic genes (Bax and caspase-3) was upregulated and that the anti-apoptotic molecules (Bcl-2, ER β and p-ERK1/2) were downregulated in the A β_{25-35} group compared with those of the blank group ($p < 0.01$). Oestradiol and kaempferol significantly decreased the expression of the pro-apoptotic molecules (Bax and caspase-3) and increased the expression of the anti-apoptotic molecules (Bcl-2, ER β and p-ERK1/2) (Figure 4). The addition of the antagonist fulvestrant and inhibitor U0126 partly reversed the effects

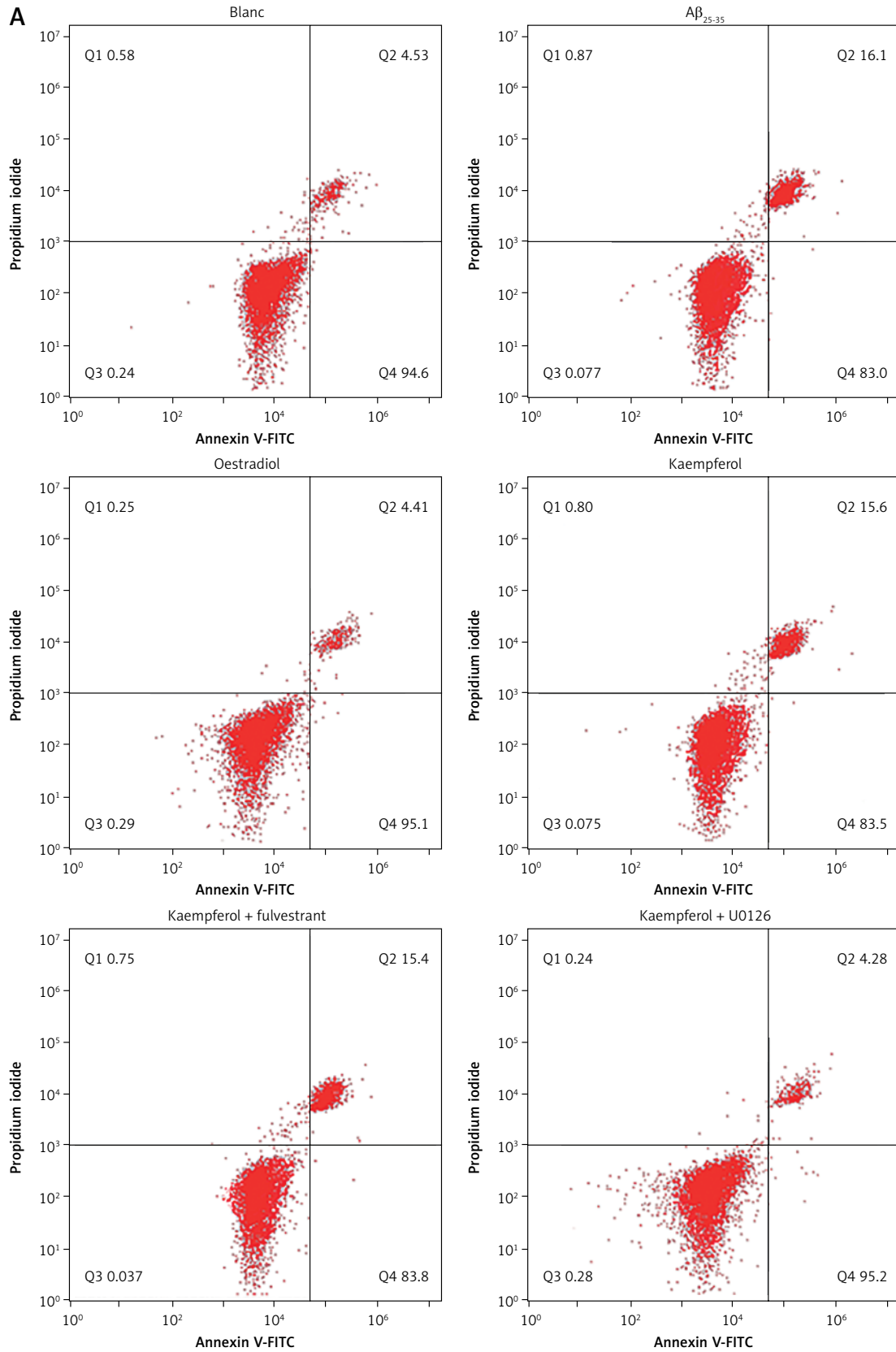


Figure 2. PC-12 cell apoptotic ratio. Apoptotic PC-12 cells were detected by Annexin V/PI staining (A)

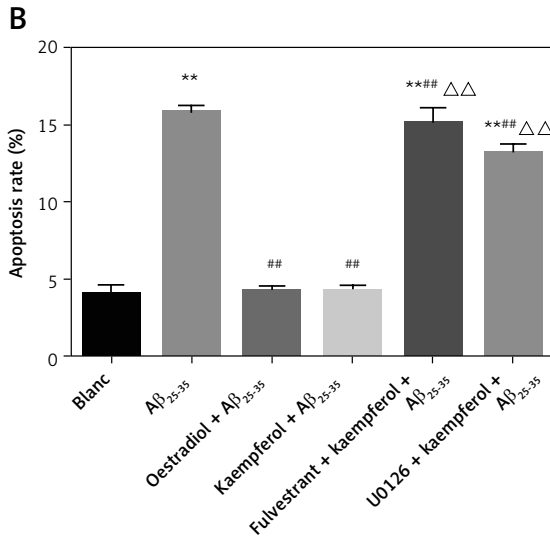


Figure 2. Cont. PC-12 cell apoptotic ratio. Compared with blank group (B) ** $p < 0.01$; compared with A β_{25-35} group, ## $p < 0.01$, compared with kaempferol group, $\Delta\Delta p < 0.01$

of kaempferol on Bax, caspase-3 and Bcl-2 ($p < 0.01$) (Figure 5 A). The PC-12 cells in the kaempferol group could still produce a certain amount of p-ERK1/2 when treated with A β_{25-35} only, while the addition of fulvestrant blocked p-ERK1/2 expression. The results suggest that kaempferol regulates apoptosis genes through the ER and ERK signalling pathways.

Discussion

In the present study, we explored the effects of kaempferol on PC-12 cell apoptosis induced by A β_{25-35} , using oestradiol as a positive control, and the underlying molecular mechanisms involved. Our results suggest that the inhibition of apoptosis by kaempferol is mediated, at least in part, through the ER/ERK/MAPK signalling pathway.

Alzheimer's disease is a disease caused by the degeneration of the central nervous system [1, 29]. Many theories have been proposed regarding the pathogenesis of senile dementia, such as the amyloid theory, apoptosis theory, oxidative stress theory, calcium overload theory, and cholinergic theory [30–33]. Studies have shown that the development of AD is closely related to apoptosis [34]. Researchers have found that a large number of apoptotic neurons exist in the brains of AD patients and that programmed cell death plays an important role in central nervous development and the adult central nervous system [35]. Therefore, regulating apoptosis to prevent the occurrence of AD has received increasing attention.

Apoptosis is an important biological process that involves many aspects of biological growth and development. Apoptosis may be initiated by Bcl-2 family proteins, which consist of anti-apop-

totic molecules (e.g., Bcl-2) and pro-apoptotic molecules (e.g., Bax), and involves mitochondrial release of cytochrome. This pathway may activate one or more of the initiator caspases. Kaempferol is a flavonoid found in many edible plants. Numerous preclinical studies have shown that kaempferol has a wide range of pharmacological activities, including antioxidant, anti-inflammatory, neuroprotective, oestrogenic/antiestrogenic, and analgesic activities. Nevertheless, little is known about the role of kaempferol in AD.

In our study, we chose different concentrations of kaempferol and oestradiol as a positive control. A β_{25-35} was used to establish AD models. The results showed that 10^{-3} μ M oestradiol induced a clear protective effect on PC-12 cells against A β_{25-35} damage, and so this concentration was used for subsequent studies. Different concen-

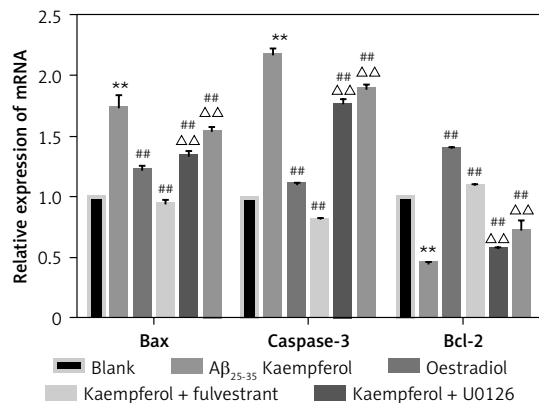


Figure 3. Expression of genes related to apoptosis. Expression of apoptosis-related mRNA for Bcl-2, Bax and caspase-3 (active) was determined by RT-PCR. Data are presented as the mean \pm SD ($n = 3$). Compared with blank group ** $p < 0.01$; compared with A β_{25-35} group, ## $p < 0.01$; compared with kaempferol group, $\Delta\Delta p < 0.01$

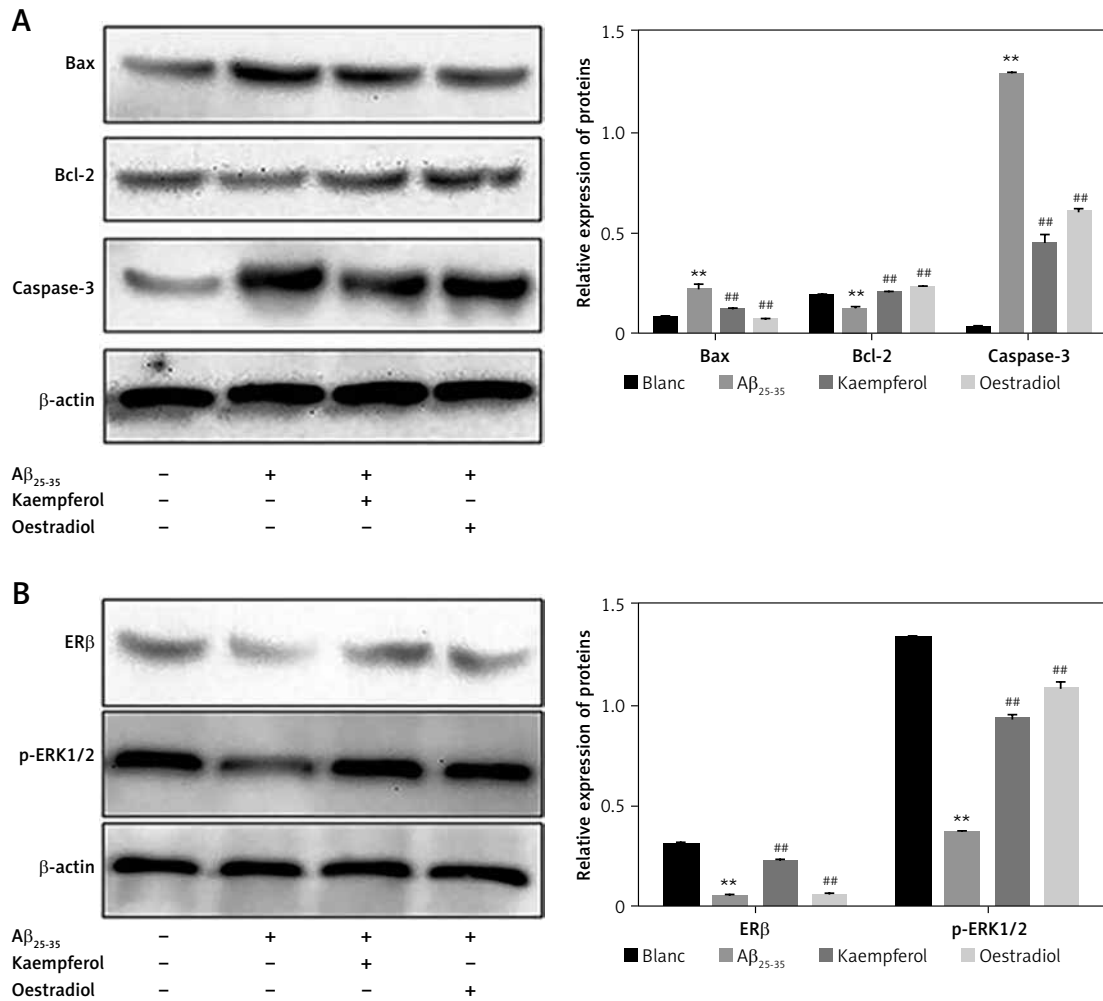


Figure 4. Expression of proteins related to apoptosis. Expression of the apoptosis-related proteins Bcl-2, Bax, caspase-3 (active) (A) and ERβ and p-ERK1/2 (B) was determined by Western blotting. Data are presented as the mean ± SD (n = 3). Compared with blank group, *p < 0.01; compared with Aβ₂₅₋₃₅ group, ##p < 0.01

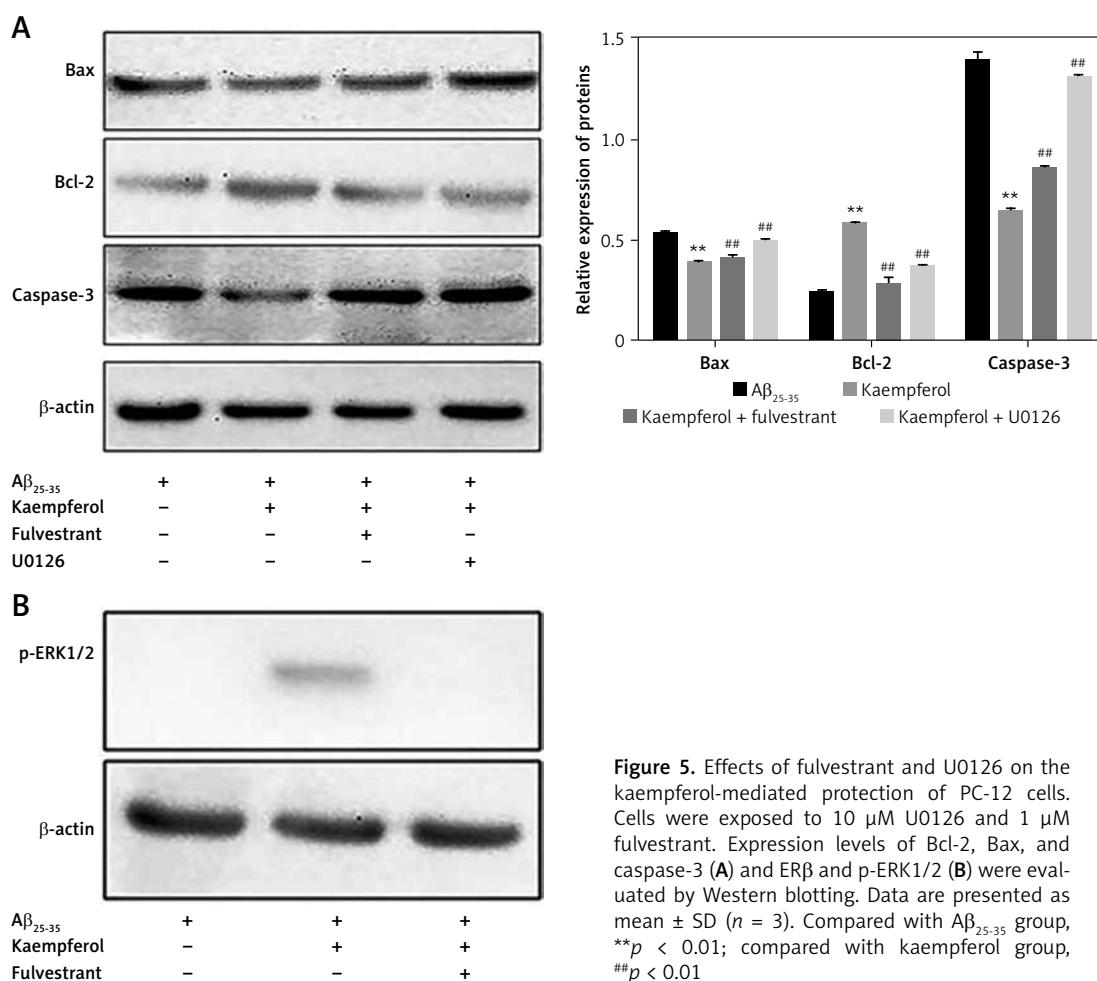
trations of kaempferol markedly decreased the percentage of apoptotic cells and regulated the expression of genes and proteins related to apoptosis, upregulating the levels of anti-apoptotic molecules (Bcl-2, ERβ and p-ERK1/2) and down-regulating the levels of pro-apoptotic molecules (Bax, caspase-3).

We further explored the signal transduction pathway involved in the protective effects of kaempferol against Aβ₂₅₋₃₅-induced PC-12 cell apoptosis. Kaempferol can bind to both subtypes of the oestrogen receptor (ER), ER-α and ER-β. Among them, the affinity of kaempferol for the ER-β receptor is higher than for the ER-α receptor [36, 37]. Our data showed that the addition of the ER antagonist fulvestrant largely increased the apoptosis of PC-12 cells (which was inhibited by kaempferol). Moreover, fulvestrant decreased the expression levels of Bcl-2, ERβ and p-ERK1/2, which were increased by kaempferol and increased the levels of Bax and caspase-3, which were de-

creased by kaempferol. MAPK/ERK is one of the most important MAPK transduction pathways and plays a role in cell growth, development, differentiation and apoptosis [15].

Brain injury activates ERK1/2 and increases p-ERK1/2 to mediate the death of neurons. U0126, an ERK inhibitor, blocks the ERK/MAPK signalling pathway. Treatment with U0126 significantly increased the apoptosis of PC-12 cells and decreased the expression levels of anti-apoptotic molecules and increased the levels of pro-apoptotic molecules that were mediated by kaempferol. Therefore, we hypothesized that the ER/ERK/MAPK signalling pathway is involved in the protective role of kaempferol against Aβ₂₅₋₃₅-induced PC-12 cell apoptosis.

In conclusion, the study suggests that kaempferol attenuates Aβ₂₅₋₃₅-induced PC-12 cell apoptosis and that the ER/ERK/MAPK signalling pathway might be responsible for its protective effects. This study provides a theoretical basis for the treatment of AD, which still requires further clarification.



Acknowledgments

Ning Zhang and Hongdan Xu equally contributed to this paper and thus shared the co-first authorship.

Xiuhong Wu and Jianmin Li equally contributed to this paper and thus shared the co-corresponding authorship.

This study was supported by the National Natural Science Fund (General Program, No. 81673581), Provincial Universities Technological Achievements Research and Cultivation Fund (TSTAU-C2018020), Heilongjiang University of Chinese Medicine Excellent Innovation Talents (2018RCD19) and Heilongjiang University of Chinese Medicine Scientific Research Fund (2018jkcy05, 2015xy04).

Conflict of interest

The authors declare no conflict of interest.

References

- Lane CA, Hardy J, Schott JM. Alzheimer's disease. *Eur J Neurol* 2018; 25: 59-70.
- Luigi P, Tanzi RE, Kovacs DM. Alzheimer's disease: the cholesterol connection. *Nat Neurosci* 2003; 6: 345-51.

- Alzheimer's Association. 2016 Alzheimer's disease facts and figures. *Alzheimers Dement* 2016; 12: 459-509.
- Hardy J. Amyloid, the presenilins and Alzheimer's disease. *Trends Neurosci* 1997; 20: 154-9.
- Mattson MP. Pathways towards and away from Alzheimer's disease. *Nature* 2004; 430: 631-9.
- Shoji M, Golde TE, Ghiso J, et al. Production of the Alzheimer amyloid beta protein by normal proteolytic processing. *Science* 1992; 258:126-9.
- Sultana R, Boyd-Kimball D, Poon HF, et al. Butterfield DA. Redox proteomics identification of oxidized proteins in Alzheimer's disease hippocampus and cerebellum: an approach to understand pathological and biochemical alterations in AD. *Neurobiol Aging* 2006; 27: 1564-76.
- Ma X, Liu L, Meng J. MicroRNA-125b promotes neurons cell apoptosis and Tau phosphorylation in Alzheimer's disease. *Neurosci Lett* 2017; 661: 57-62.
- Wu BW, Wu MS. Effects of microRNA-10a on synapse remodeling in hippocampal neurons and neuronal cell proliferation and apoptosis through the BDNF-TrkB signaling pathway in a rat model of Alzheimer's disease. *J Cell Physiol* 2018; 233: 5281-92.
- Liu SL, Wang C, Jiang T, Tan L, Xing A, Yu JT. The role of Cdk5 in Alzheimer's disease. *Mol Neurobiol* 2016; 53: 4328-42.
- Young-Jung L, Bae HS, Sang-Yoon N, Ki-Wan O, Tae HJ. Inflammation and Alzheimer's disease. *Arch Pharm Res* 2010; 33: 1539-56.
- George C, Gontier G, Lacube P, Francois JC, Holzenberger M, Aid S. The Alzheimer's disease transcriptome mimics

- the neuroprotective signature of IGF-1 receptor-deficient neurons. *Brain* 2017; 140: 2012-27.
13. Low HB, Zhang Y. Regulatory roles of MAPK phosphatases in cancer. *Immune Netw* 2016; 16: 85-98.
 14. Kyriakis JM, Avruch J. Mammalian MAPK signal transduction pathways activated by stress and inflammation: a 10-year update. *Physiol Rev* 2012; 92: 689-737.
 15. Sun Y, Liu WZ, Liu T, Feng X, Yang N, Zhou HF. Signaling pathway of MAPK/ERK in cell proliferation, differentiation, migration, senescence and apoptosis. *J Recept Signal Transduct Res* 2015; 35: 600-4.
 16. Dohi K, Mizushima H, Nakajo S, et al. Pituitary adenylate cyclase-activating polypeptide (PACAP) prevents hippocampal neurons from apoptosis by inhibiting JNK/SAPK and p38 signal transduction pathways. *Regul Pept* 2002; 109: 83-8.
 17. Pike CJ. Sex and the development of Alzheimer's disease. *J Neurosci Res* 2017; 95: 671-80.
 18. Henderson VW, Paganini-Hill A, Miller BL, et al. Estrogen for Alzheimer's disease in women: randomized, double-blind, placebo-controlled trial. *Neurology* 2000; 54: 295-301.
 19. Dhandapani KM, Brann DW. Protective effects of estrogen and selective estrogen receptor modulators in the brain. *Biol Reprod* 2002; 67: 1379-85.
 20. Chattopadhyaya AB, Kapur K. Risks and benefits of estrogen plus progestin in healthy postmenopausal women. Principal results from the Women's Health Initiative randomized controlled trial, 321-333. *Med J Armed Forces India* 2003; 59: 271.
 21. Rietjens I, Louisse J, Beekmann K. The potential health effects of dietary phytoestrogens. *Br J Pharmacol* 2017; 174: 1263-80.
 22. Meng X, Wang M, Sun G, et al. Attenuation of Abeta25-35-induced parallel autophagic and apoptotic cell death by gypenoside XVII through the estrogen receptor-dependent activation of Nrf2/ARE pathways. *Toxicol Appl Pharmacol* 2014; 279: 63-75.
 23. Nikov GN, Hopkins NE, Boue S, Alworth WL. Interactions of dietary estrogens with human estrogen receptors and the effect on estrogen receptor-estrogen response element complex formation. *Environ Health Perspect* 2000; 108: 867-72.
 24. Devi KP, Malar DS, Nabavi SF, et al. Kaempferol and inflammation: from chemistry to medicine. *Pharmacol Res* 2015; 99: 1-10.
 25. Duan L, Ding W, Liu X, et al. Biosynthesis and engineering of kaempferol in *Saccharomyces cerevisiae*. *Microb Cell Fact* 2017; 16: 165.
 26. Chen AY, Chen YC. A review of the dietary flavonoid, kaempferol on human health and cancer chemoprevention. *Food Chem* 2013; 138: 2099-107.
 27. Garcia-Mediavilla V, Crespo I, Collado PS, et al. The anti-inflammatory flavones quercetin and kaempferol cause inhibition of inducible nitric oxide synthase, cyclooxygenase-2 and reactive C-protein, and down-regulation of the nuclear factor kappaB pathway in Chang Liver cells. *Eur J Pharmacol* 2007; 557: 221-9.
 28. Beg T, Jyoti S, Naz F, et al. Protective effect of kaempferol on the transgenic drosophila model of Alzheimer's disease. *CNS Neurol Disord Drug Targets* 2018; 17: 421-9.
 29. delEtoile J, Adeli H. Graph theory and brain connectivity in Alzheimer's disease. *Neuroscientist* 2017; 23: 616-26.
 30. Kozlov S, Afonin A, Evsyukov I, Bondarenko A. Alzheimer's disease: as it was in the beginning. *Rev Neurosci* 2017; 28: 825-43.
 31. Nazem A, Sankowski R, Bacher M, Al-Abed Y. Rodent models of neuroinflammation for Alzheimer's disease. *J Neuroinflammation* 2015; 12: 74.
 32. Barage SH, Sonawane KD. Amyloid cascade hypothesis: pathogenesis and therapeutic strategies in Alzheimer's disease. *Neuropeptides* 2015; 52: 1-18.
 33. Area-Gomez E, Schon EA. On the pathogenesis of Alzheimer's disease: the MAM hypothesis. *FASEB J* 2017; 31: 864-7.
 34. Kenney K, Iacono D, Edlow BL, et al. Dementia after moderate-severe traumatic brain injury: coexistence of multiple proteinopathies. *J Neuropathol Exp Neurol* 2018; 77: 50-63.
 35. Raff MC, Barres BA, Burne JF, Coles HS, Ishizaki Y, Jacobson MD. Programmed cell death and the control of cell survival: lessons from the nervous system. *Science* 1993; 262: 695-700.
 36. Tang X, Zhu X, Liu S, Nicholson RC, Ni X. Phytoestrogens induce differential estrogen receptor beta-mediated responses in transfected MG-63 cells. *Endocrine* 2008; 34: 29-35.
 37. Harris DM, Besselink E, Henning SM, Go VL, Heber D. Phytoestrogens induce differential estrogen receptor alpha or Beta-mediated responses in transfected breast cancer cells. *Exp Biol Med (Maywood)* 2005; 230: 558-68.