

# Variation in the gene encoding the co-inhibitory molecule BTLA is associated with survival in patients treated for clear cell renal carcinoma – results of a prospective cohort study

Krzysztof Tupikowski<sup>1</sup>, Anna Partyka<sup>2</sup>, Edyta A. Pawlak<sup>2</sup>, Kuba Ptaszkowski<sup>3</sup>, Romuald Zdrojowy<sup>4</sup>, Irena Frydecka<sup>2</sup>, Agnieszka Hałoń<sup>5,6</sup>, Lidia Karabon<sup>2,4</sup>

<sup>1</sup>Subdivision of Urology, Wrocław Comprehensive Cancer Centre, Wrocław, Poland

<sup>2</sup>Department of Experimental Therapy, L. Hirszfeld Institute of Immunology and Experimental Therapy, Wrocław, Poland

<sup>3</sup>Department of Clinical Biomechanics and Physiotherapy in Motor System Disorders, Wrocław Medical University, Wrocław, Poland

<sup>4</sup>Department of Urology and Oncological Urology, Wrocław Medical University, Wrocław, Poland

<sup>5</sup>Department of Pathomorphology, Wrocław Comprehensive Cancer Center, Wrocław, Poland

<sup>6</sup>Department of Pathomorphology and Oncological Cytology, Wrocław Medical University, Wrocław, Poland

## Corresponding author:

Krzysztof Tupikowski MD, PhD  
Subdivision of Urology  
Wrocław Comprehensive Cancer Centre  
Wrocław, Poland  
E-mail:  
tupikowski.k@dco.com.pl

**Submitted:** 20 December 2020, **Accepted:** 19 September 2021

**Online publication:** 19 September 2021

Arch Med Sci

DOI: <https://doi.org/10.5114/aoms/142407>

Copyright © 2021 Termedia & Banach

## Abstract

**Introduction:** The successful introduction of immune checkpoint blockade approaches to renal-cell carcinoma (RCC) treatment indicates the importance of molecules regulating the T cell response to RCC risk and progression.

**Material and methods:** In this study, we evaluate the association of variations in the *CTLA-4*, *BTLA* and *CD28* genes with overall survival (OS) of RCC patients and specifically clear cell RCC (ccRCC) patients. The following single nucleotide polymorphisms (SNPs) previously genotyped using the RFLP method or TaqMan SNP Genotyping Assays were analyzed: *CTLA-4* gene: c.49A>G (rs231775), g.319C>T (rs5742909), g.\*6230G>A (CT60; rs3087243), g.\*10223G>T (Jo31; rs11571302); *CD28* gene: c.17+3T>C (rs3116496), c.-1042G>A (rs3181098); *BTLA* gene: rs2705511, rs1982809, rs9288952, rs9288953, rs2705535 and rs1844089.

**Results:** During long term observation (6.5 years) we discovered that possessing the A allele at BTLA rs1844089 SNP, together with advanced disease (stage  $\geq 3$ , tumor grade  $> 3$ , tumor diameter  $\geq 70$  mm), is an independent risk factor of death which increases the hazard ratio (HR) of death by more than two-fold (HR = 2.21, 95% CI: 1.28–3.83). Furthermore, the OS of patients bearing this allele is 6 months shorter than for homozygous (GG) patients (42.5 vs. 48.2 months).

**Conclusions:** Our results indicate for the first time that genetic variation within the gene encoding BTLA is significantly associated with overall survival in clear cell renal cell carcinoma patients.

**Key words:** ccRCC, BTLA, CTLA-4, single nucleotide polymorphism, survival, cancer susceptibility gene.

## Introduction

In the complicated process of renal cell carcinoma (RCC) carcinogenesis, along with the vascular endothelial growth factor (VEGF)-tyrosine kinases-m-TOR pathway, host immunosurveillance plays a pivotal role. Different therapies targeting the VEGF pathway have proven but limited efficacy and multiple drugs modulating the immunological system have been introduced [1–3]. In general, the immunologic system should be able to eliminate neoplastically changed cells, but cancer cells have evolved many mechanisms to evade the immunological response, and therefore, in many patients, immunosurveillance is ineffective. In the immunological response, T cell activation plays a key role. This process is controlled by a complicated network of interactions of positive and negative regulators including CD28, which is the primary co-stimulatory molecule, and a variety of co-inhibitory molecules, among others: cytotoxic T-lymphocyte-associated antigen 4 (CTLA-4), B- and T-lymphocyte attenuator (BTLA) and programmed cell death protein 1 (PD-1). Under normal conditions, down-regulatory proteins act to limit T-cell responses to chronic antigen exposure, but in cancer patients their function might be altered, which could cause impaired elimination of cancer cells [4, 5].

CD28 is co-stimulatory molecule expressed in CD3+ thymocytes, 95% of CD4+ T cells,  $\gamma/\delta$  T cells and approximately 50% of CD8+ T cells. The co-stimulatory signal provided by this receptor after binding with its ligand B7-1 (CD80) or B7-2 (CD86) presented on antigen presenting cells (APCs) is critical for allowing full T cell activation, sustaining cell proliferation, preventing anergy and/or apoptosis and inducing differentiation to effector and memory status [6]. CTLA-4 is only minimally expressed in resting T cells, and is transiently up-regulated following stimulation [7]. The binding of CTLA-4 with its ligands (which are common to CD28) causes inhibition of downstream T-cell receptor (TCR) signaling by SH<sub>2</sub> domain-containing phosphatases, inhibition of lipid-raft and microcluster formation, and negative regulation of the immune response via extrinsic components, such as transforming growth factor- $\beta$  (TGF- $\beta$ ) and the tryptophan-degrading enzyme indoleamine 2,3-dioxygenase (IDO) [8]. Moreover, CTLA-4 competes with costimulatory CD28 molecules, having more effective ligation to their common B7 ligands. It has been shown in animal models that CTLA-4 blockade leads to enhancement of the immune response rejection of tumors [9, 10]. BTLA is expressed in a broad range of cells responsible for immunosurveillance, including CD4+ and CD8+ T cells, B cells, natural killer (NK) T cells, macrophages and dendritic cells (DCs) [11]. Its activation is triggered through binding to the herpes virus entry media-

tor (HVEM), a member of the tumor necrosis factor receptor family, and phosphorylation of either Src homology 2 domain-containing protein tyrosine phosphatase (SHP)-1 or SHP-2, which are responsible for inhibitory signaling [12]. Currently, molecules targeting inhibitory proteins such as CTLA-4 (ipilimumab) or PD-1 (nivolumab, pembrolizumab, etc.) have been introduced into treatment of patients with various tumor types, including kidney cancer [13, 14]. BTLA is seen as the next potential target for anticancer intervention [15].

SNPs are substitutions of single nucleotides at specific locations in the DNA strand. This might result in aberrant protein expression and function causing dysregulation of processes for which it is responsible. We have hypothesized that SNPs occurring within genes encoding immune checkpoint molecules might influence the immune system response to cancer cells. This in turn might lead to diminished patients survival due to cancer. We have previously demonstrated that SNPs in the *CTLA-4*, *BTLA* and *CD28* genes are associated with the advanced stages of clear cell renal carcinoma (ccRCC) and with more aggressive forms of tumor [16, 17].

Herein, we tested the hypothesis that these polymorphisms also influence survival in ccRCC patients, as has been demonstrated for *CTLA-4* gene variations in patients with other cancers [18–22]. For this purpose, we analyzed overall survival in ccRCC patients in relation to the following polymorphisms: in the *CTLA-4* gene: c.49A>G (rs231775), g.319C>T (rs5742909), g.\*6230G>A (CT60; rs3087243), g.\*10223G>T (Jo31; rs11571302); in the *CD28* gene: c.17+3T>C (rs3116496), and CD28c.-1042G>A (rs3181098); and in the *BTLA* gene: rs2705511, rs1982809, rs9288952, rs9288953, rs2705535, rs1844089.

## Material and methods

### Patients

This study was approved by Wrocław Medical University Bioethics Committee (KB 55/2010). All patients gave informed written consent before study commencement. A total of 282 patients with kidney cancer were prospectively recruited by the Department of Urology and Oncologic Urology at Wrocław Medical University, a tertiary urologic cancer center. The analysis was performed on 214 clear cell renal carcinoma patients with full data regarding genetic and clinical variables, who had completed follow-up. 56 patients were excluded due to non-clear cell histopathology and 11 due to lack of survival data, one for incomplete genotyping data. All patients were followed up every three months, either in person or by teleconsultation, to determine their OS.

## Genotyping

DNA from each individual was isolated from venous blood using the QIAamp DNA Blood Mini Kit (Qiagen, Germany) according to the manufacturer's protocol. The following SNPs were genotyped as described previously [14]: g.319C>T in the promoter region, c.49A>G in exon 1, CT60 and Jo31 in the 3' untranslated region (UTR) of the *CTLA-4* gene, c.17+3T>C in the third intron and c.-1042G>A in the upstream region of the *CD28* gene. SNPs in the *BTLA* gene – rs1844089, rs2705535 and rs9288953 (located in intron 1); rs9288952 (located in exon 4), rs1982809 (located in 3'-UTR) and rs2705511 (located in the intragenic region) – were genotyped using the TaqMan SNP Genotyping Assay as described previously [16].

## Statistical analysis

Statistical analysis was performed using Statistica, version 13 (Data Analysis Software System, USA). For all quantitative variables, median, minimum and maximum values were calculated. Qualitative variables were analyzed with descriptive statistics, using absolute and percentage frequency distribution. Overall survival with different clinicopathological variables was calculated using Kaplan-Meier analysis. A log-rank test was used to assess the association between predictor variables and patient survival. A Cox proportional hazards model was used to assess the impact of a range of qualitative and continuous variables on survival. The model building process was carried out using a forward/backward stepwise method, and standard measures of goodness-of-fit (AIC, BIC, R2) were used to evaluate the model. Results were considered statistically significant based on a threshold of  $p < 0.05$ .

## Results

Patient characteristics are described in Table I.

### Influence of clinicopathological factors on overall survival of clear cell renal carcinoma patients

As the first step to test our group we analyzed the influence of established survival prognostic factors. A univariate analysis confirmed that known clinicopathological factors – clinical stage, grade of tumor, presence of necrosis on histopathology, presence of venous thrombus and diameter of the tumor of  $\geq 70$  mm – were significantly associated with overall survival. The presence of sarcomatoid differentiation in kidney tissue was the only clinicopathological parameter not associated with OS in our analysis (Table II).

### Influence of genetic variations in CTLA-4, CD28 and BTLA genes on overall survival of clear cell renal carcinoma patients

We analyzed the OS in relation to previously genotyped polymorphisms in genes encoding co-signaling molecules CTLA-4, CD28 and BTLA. The analysis of overall survival in relation to the investigated polymorphisms showed that in long term observation the presence of the A allele at the BTLA rs1844089 SNP [AG+AA genotypes] is the only genetic factor significantly negatively correlated with survival in comparison with the GG homozygote (42.5 m-o vs. 48.2 m-o, Table III; Figure 1). For the other SNPs there were no statistically significant associations with OS (Table III).

### Multivariate analysis of the influence of clinicopathological factors and genetic variations in CTLA-4, CD28 and BTLA genes on overall survival of clear cell renal carcinoma patients

Various Cox models were created and a retrograde Cox regression model including significant

**Table I.** Patient and disease characteristics

Parameter	Results
N	214
Male	137 (64.0%)
Female	77 (36.0%)
Median age [years]	62 (range: 25–85)
Stage at presentation:	
I	100
II	25
III	25
IV	64
Grade:	
I	104
II	65
III	35
IV	10
Presence of necrosis in histopathology	76 (35.3%)
Presence of venous thrombus	15 (7%)
Presence of sarcomatoid component	9 (4.2%)
Tumor diameter:	
< 70 mm	137 (64.0%)
$\geq 70$ mm	77 (36.0%)
Aggressive phenotype	81 (37.8%)
Survival status:	
Dead	76 (35.5%)
Alive	138 (64.5%)

**Table II.** Associations between overall survival (OS) and clinicopathological variables

Variable	Median OS [mo]	P-value (log-rank test)
Stage:		
1	52.4	<b>&lt; 0.001</b>
2	51.8	
3	45.5	
4	29.1	
1–2	52.1	<b>&lt; 0.001</b>
3–4	39.2	
Grade:		
G1	53.3	<b>&lt; 0.001</b>
G2	42.6	
G3	40.6	
G4	29.3	
G1–3	50.7	<b>&lt; 0.001</b>
G4	29.3	
Necrosis:		
No	52.6	<b>&lt; 0.001</b>
Yes	40.7	
Sarcomatoid differentiation:		
No	46.3	0.09
Yes	49.1	
Presence of venous thrombus:		
No	49.0	<b>0.004</b>
Yes	24.8	
Tumor dimension:		
< 70	51.6	<b>&lt; 0.001</b>
≥ 70	40.1	
Aggressive phenotype in histopathology:		
No	52.9	<b>&lt; 0.001</b>

clinical parameters and investigated polymorphisms was selected on the basis of AIC, BIC and R2. We confirmed the results obtained in univariate analysis that the BTLA rs1844089 SNP, and also tumor stage  $\geq 3$ , tumor grade 4 and tumor diameter  $\geq 70$  mm, were all significantly negatively associated with overall survival (Table IV). In particular, the presence of the A allele at the BTLA rs1844089 SNP [AG+AA genotypes] increased the hazard ratio (HR) of death by more than two-fold. Other parameters – necrosis, presence of venous thrombus, aggressive phenotype – were not significantly associated in multiparametric analysis.

### In silico analysis of functional role of rs1844089 polymorphism

In order to evaluate the potential biological relevance of rs1844089 we performed an in silico analysis with application of publicly available tools. According to the Encyclopedia of DNA Elements (ENCODE) this genetic variant is located in close proximity (565 kb) to the candidate cis-regulatory element (cCRE) EH38E2227319, which has been predicted to have a promoter-like signature in B cells, and as well as GM12878 and OCI-LYF (human B cell non-Hodgkin lymphoma) cell lines.

Moreover, on the basis on in silico analysis using ENCODE and RegulomeDB (Figure 2) it can be predicted that metastasis-associated protein 3 (MTA3) interacts with the BTLA gene within the region where the rs1844089 SNP is situated (Figure 2).

### Discussion

The CTLA-4, BTLA and CD28 molecules are pivotal co-signaling proteins regulating lymphocyte activation. Therefore, SNPs in genes encoding these receptors have previously been investigated as potential risk factors in both oncological and non-oncological disease [16–18, 23–28]. Our previous study showed that polymorphisms in the *CTLA-4*, *CD28* and *BTLA* genes confer susceptibility to RCC. In particular, we found that the presence of a G allele at SNPs CT60 and Jo31 was associated with a higher risk of advanced stage and necrosis of tumor in ccRCC patients [16, 17], particularly in patients heterozygous at both CT60AG and Jo31GT [17]. Women carrying the CD28c.-1042G>A[GG] genotype were more prone to ccRCC [17]. Additionally, we found that the presence of the BTLA rs1982809[GG] genotype was associated with increased risk of RCC and with high grade tumors in ccRCC patients [16].

In this study, we investigated an unselected population of ccRCC patients treated in a tertiary cancer center. This approach allows our results to be generalized for all patients treated due to ccRCC. We analyzed SNPs in the co-signaling molecule genes *CTLA-4*, *BTLA* and *CD28* as possible factors associated with overall survival in ccRCC patients. Firstly, we investigated whether our population was representative of a typical kidney cancer population. We observed that all classical factors commonly associated with poor prognosis [29] are also present in our study population (Table II), the only exception being sarcomatoid differentiation in cancer tissue, which in our group was not significantly associated with poor prognosis. The potential reason for this observation is the low number of patients with sarcomatoid differentiation ( $n = 9$ ). We also checked whether

**Table III.** Analysis of survival by polymorphism (SNPs in the CTLA-4, CD28 and BTLA genes)

SNP	Genotype	N	Median OS [months]	P-value*
CTLA-4c.49A>G (rs231775)	AA	66	43.1	0.26
	AG	110	48.1	
	GG	38	49.1	
	AA	66	43.1	0.30
	AG+GG	148	48.2	
CTLA-4g.319C>T (rs5742909)	CC	168	46.6	0.69
	CT	46	48.5	
CT60G>A (CTLA-4g.*6230G>A; rs3087243)	AA	23	54.4	0.18
	AG	115	44.5	
	GG	76	48.2	
	GG	76	48.2	0.30
	AG+AA	138	45.1	
Jo31G>T (CTLA-4g.*10223G>T ; rs11571302)	GG	76	51.4	0.32
	GT	113	44.7	
	TT	25	45.9	
	GT+TT	138	45.1	0.15
	GG	76	51.4	
CD28c.17+3T>C (rs3116496)	CC	2	42.8	0.73
	CT	55	42.4	
	TT	157	49.0	
	CC+CT	57	42.4	0.44
	TT	157	49.0	
CD28c.-1042G>A (rs3181098)	AA	16	45.3	0.36
	AG	93	50.9	
	GG	105	45.7	
	GG	105	45.7	0.52
	AA+AG	109	50.0	
BTLA rs1844089	AA	3	42.5	0.12
	AG	32	42.5	
	GG	179	48.2	
	AA+AG	35	42.5	0.045
	GG	179	48.2	
BTLA rs2705535	CC	206	46.1	0.99
	CT	7	51.6	
BTLA rs9288952	AA	184	47.3	0.18
	AG	28	43.5	
BTLA rs9288953	CC	81	51.6	0.29
	CT	102	47.3	
	TT	31	41.8	
	CC+CT	183	50.0	0.23
	TT	31	41.8	
BTLA rs1982809	AA	112	47.3	0.17
	AG	87	46.3	
	GG	15	40.0	
	AA+AG	199	46.6	0.18
	GG	15	40.0	

Table III. Cont.

SNP	Genotype	N	Median OS [months]	P-value*
BTLA rs2705511	AA	110	45.3	0.16
	AC	90	49.0	
	CC	14	43.6	
	AA	110	45.3	0.09
	AC+CC	104	46.9	

\*Log-rank test.

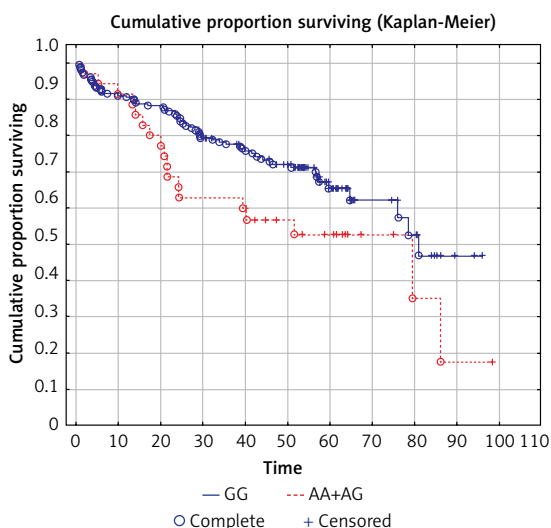


Figure 1. Kaplan-Meier overall survival curves for GG and AG+GG genotypes of BTLA rs1844089  $p = 0.045$

commonly accepted tumor aggressive phenotype features (presence of at least one of the following: sarcomatoid differentiation, presence of necrosis, grade 3 or 4, presence of venous invasion) are associated with survival, and the same for tumor diameter in a dichotomous model (< 70 mm or  $\geq 70$  mm).

Then, we analyzed the associations between polymorphisms in co-signaling molecule genes and prognosis in ccRCC patients. Herein, for the first time, we observed that variation within the *BTLA* gene influences overall survival in ccRCC patients. We found that the presence of the A allele at the BTLA rs1844089 SNP (AG + AA genotypes) was independently associated with risk of

death in a multivariate Cox model. Moreover, we found that presence of the A allele at the BTLA rs1844089 SNP (AG + AA genotypes) was associated with decreased OS in our group by nearly 6 months.

SNPs situated in regulatory regions such as promoters, introns and 3' UTR regions can play an important role in phenotype. For example, SNPs located in promoter regions may influence promoter activity and mRNA expression level of a gene, and polymorphisms located in the 3' UTR region might be situated within transcriptional enhancer or microRNA binding sites. It has been reported that the first intron within most genes is important for the splicing process and may regulate gene expression more efficiently than other introns [30].

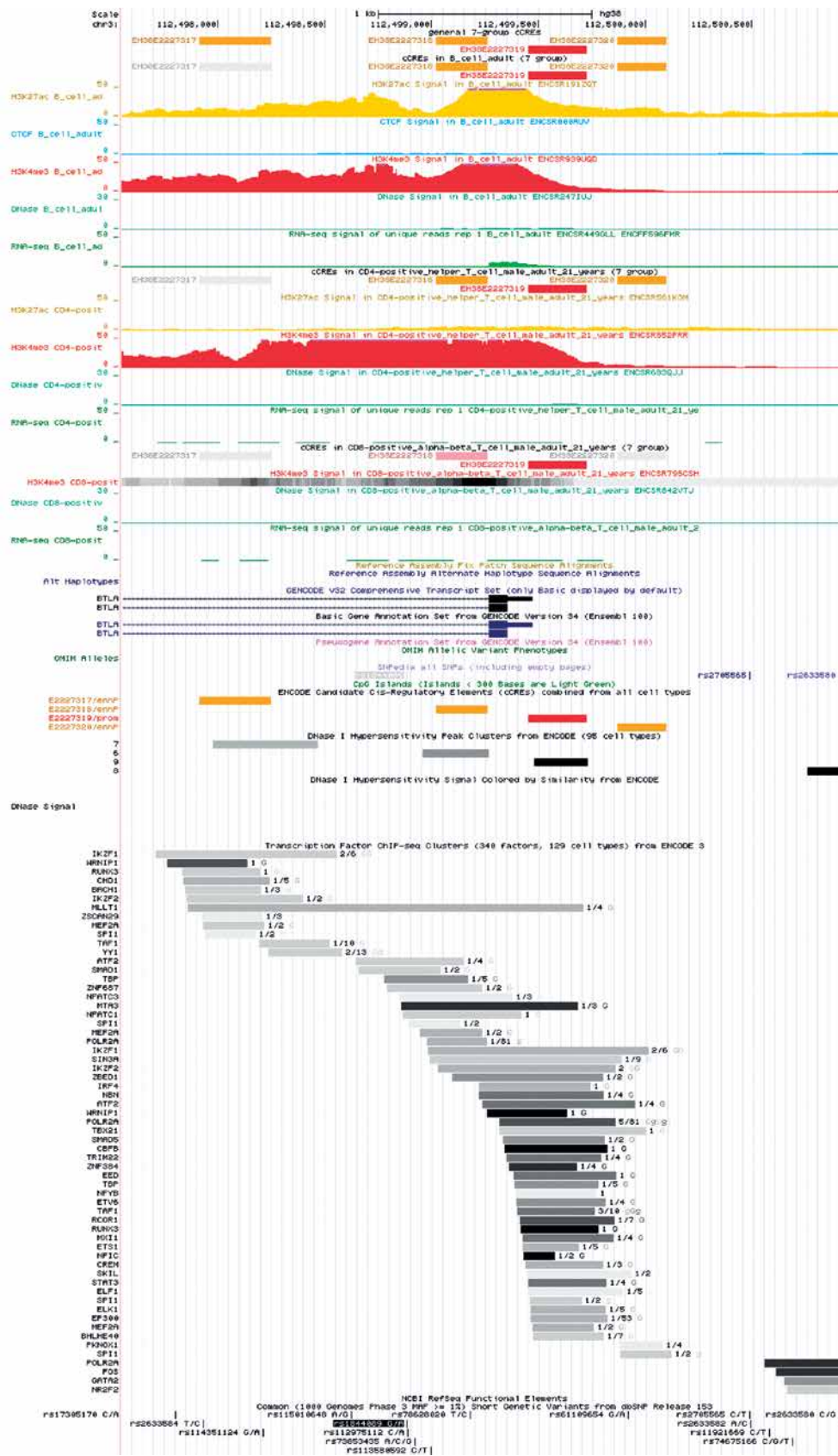
The BTLA SNP rs1844089 is located in intron 1 of the *BTLA* gene, and it is postulated that this SNP might be associated with aberrant splicing, which could influence the function of the BTLA protein [31]. This SNP has also been associated with disease risk, tumor size, estrogen and progesterone receptor expression, and C-erbB and P53 status in breast cancer patients [32]. Ge *et al.* also reported that this SNP was associated with colon cancer risk in Chinese patients, but that the influence of this polymorphism was modified by pork consumption [24]. We investigated BTLA rs1844089 as a risk factor for RCC and ccRCC development, but did not find a statistically significant correlation [16].

As we concluded on the basis of *in silico* analysis, it can be postulated that this polymorphism is situated in close proximity to cCRE, which may

Table IV. Results of retrograde Cox regression analysis of the influence of variables on probability of death

Variable		P-value	HR (95% CI)
BTLA rs1844089 [AA+AG] vs [GG]	GG		Ref.
	AA+AG	0.005	2.21 (1.28–3.83)
Tumor grade (1–3 vs. 4)	1–3		Ref.
	4	0.013	1.90 (1.15–3.14)
Tumor stage (1–2 vs. 3–4)	1–2		Ref.
	3–4	< 0.001	3.35 (1.96–5.73)
Tumor diameter (< 70 vs. $\geq 70$ mm)	< 70		Ref.
	$\geq 70$	0.014	1.86 (1.13–3.05)

Variation in the gene encoding the co-inhibitory molecule *BTLA* is associated with survival in patients treated for clear cell renal carcinoma – results of a prospective cohort study



**Figure 2.** Location of rs1844089 of *BTLA* gene in relation to data from ENCODE project showing potential regulatory element-binding sites upstream and downstream of rs1844089 in B cells, CD4+, and CD8+ cells. The figure was downloaded from the UCSC genome browser (<http://genome.ucsc.edu>). A view of the region surrounding the rs1844089 also includes the representation of the ChIP-seq data from the ENCODE project

have promoter activity in B cells, where the *BTLA* expression level is highest. Moreover, it can be predicted that metastasis-associated protein 3 (MTA3) interacts with the *BTLA* gene within the region where the rs1844089 SNP is situated.

MTA3 belongs to the metastasis-associated protein (MTA) family, all members of which serve as subunits of nucleosome remodeling and the deacetylase (NuRD) protein complex. MTAs play a role in chromatin remodeling and modifying gene expression through interactions with histone- or non-histone proteins and modified nucleosomes while recognizing specific post-translational modification. Although the MTA proteins do not directly bind with DNA, they interact with a variety of chromatin remodeling factors and complexes with enzymatic activities and thereby lead to the repression or derepression of target genes [33].

An emerging body of evidence indicates that MTA3 could regulate cell proliferation and differentiation in various cancers. However, it can act differently in various cancers. It acts as an oncogene in breast cancer and non-small cell lung cancer (NSCLC), and its level is increased in the progression of the above-mentioned tumors [34, 35], while MTA3 expression was significantly reduced in both tumor tissues and cell lines in gastroesophageal junction adenocarcinoma [36] as well as in patients with endometrioid adenocarcinoma [37]. In the study by Ding *et al.* [38] significantly lower expression of MTA3 in tumor ccRCC tissues compared to normal tissue was noted. What is more, the authors reported that overexpression of MTA3 suppressed the proliferation and migration of ccRCC, indicating that MTA3 played a key role in the pathophysiologic process of ccRCC. One can speculate that low expression of MTA3 in ccRCC influences MTA3 interaction with the *BTLA* gene, which in turns disturbs gene translation. The allelic variation within the rs1844089 SNP could influence the strength of MTA3 interaction.

The functional role of this polymorphism requires further elucidation, and exploration as a possible marker for increased risk of shortened survival, which could warrant a personalized approach to treatment. Furthermore, it might differentiate patient responses to future *BTLA* directed therapy approaches.

On the other hand, in our previous study we found a strong association between *rs1982809A>G* and ccRCC risk, whereas this SNP was not associated with disease survival. *Rs1982809A>G* is situated in the 3'UTR nearby gene region of *BTLA* (73 bp). A search in SNPinfo and FastSNP databases did not provide data regarding potential biological implication of this SNP. However, we speculate that since the 3'UTR region of the gene is the

place where epigenetic regulation by microRNA binding takes place, presence of allele variants in this region can modulate miR binding. In fact, the miR511-3p potentially binds to the region where *rs1982809* is situated (based on the TargetScan analysis). This hypothesis needs to be verified in an experimental study.

Since these two SNPs regulate gene and protein expression by different mechanisms, they might influence different stages of immune surveillance, and therefore have different impacts on disease risk and clinical outcome.

For the other SNPs included in our analysis, we detected no statistically significant associations with OS. Despite that, it is noteworthy that patients with heterozygous CT60[AG] or Jo31[GT] genotypes lived approximately 10 months shorter than those with CT60[GG] or Jo31[GG] genotypes.

Our study is limited by being single-centered, and as such our treatment results are representative of those of a tertiary cancer center. In our population, there is overrepresentation of stage IV patients, which is also characteristic of tertiary cancer centers. From the initial pool of 282 recruited patients, 67 (23.8%) were excluded as a result of the prospective nature of the study (the histopathology is usually unknown before surgery) and/or a lack of adequate data (3.9%). This leads to the study group being smaller, although the prospective nature of the study allows for the elimination of retrospective study biases. The elimination of even small numbers of patients with inadequate survival data, which is the primary end measure, gives the calculations more credibility than attempts to fill these data gaps with statistical approximations.

In conclusion, our prospective cohort provides a unique opportunity to study the influence of SNPs of three genes responsible for lymphocyte activation in a kidney cancer population. The obtained observations give new insights into the influence of the immunological system on the survival of cancer patients and might be of importance in personalizing patient approaches and designing new drugs. Our results require confirmation in larger studies and in different populations across the globe.

### Conflict of interest

The authors declare no conflict of interest.

### References

1. Banyra O, Tarchynets M, Shulyak A. Renal cell carcinoma: how to hit the targets? *Cent European J Urol* 2014; 66: 394-404.
2. Kamli H, Li L, Gobe GC. Limitations to the therapeutic potential of tyrosine kinase inhibitors and alternative therapies for kidney cancer. *Ochsner J* 2019; 19: 138-51.



3. Sharma R, Kadife E, Myers M, Kannourakis G, Prithviraj P, Ahmed N. Determinants of resistance to VEGF-TKI and immune checkpoint inhibitors in metastatic renal cell carcinoma. *J Exp Clin Cancer Res* 2021; 40: 186.
4. Hanahan D, Weinberg RA. Hallmarks of cancer: the next generation. *Cell* 2011; 144: 646-74.
5. Peggs KS, Quezada SA, Chambers CA, Korman AJ, Allison JP. Blockade of CTLA-4 on both effector and regulatory T cell compartments contributes to the antitumor activity of anti-CTLA-4 antibodies. *J Exp Med* 2009; 206: 1717-25.
6. Frauwirth KA, Thompson CB. Activation and inhibition of lymphocytes by costimulation. *J Clin Invest* 2002; 109: 295-9.
7. Walunas TL, Lenschow DJ, Bakker CY et al. CTLA-4 can function as a negative regulator of T cell activation. *Immunity* 1994; 1: 405-13.
8. Valk E, Rudd CE, Schneider H. CTLA-4 trafficking and surface expression. *Trends Immunol* 2008; 29: 272-9.
9. Leach DR, Krummel MF, Allison JP. Enhancement of antitumor immunity by CTLA-4 blockade. *Science* 1996; 271: 1734-6.
10. Hurwitz AA, Foster BA, Kwon ED, et al. Combination immunotherapy of primary prostate cancer in a transgenic mouse model using CTLA-4 blockade. *Cancer Res* 2000; 60: 2444-8.
11. Wang XF, Chen YJ, Wang Q, et al. Distinct expression and inhibitory function of B and T lymphocyte attenuator on human T cells. *Tissue Antigens* 2007; 69: 145-53.
12. Kobayashi Y, Iwata A, Suzuki K, et al. B and T lymphocyte attenuator inhibits LPS-induced endotoxic shock by suppressing Toll-like receptor 4 signaling in innate immune cells. *Proc Natl Acad Sci USA* 2013; 110: 5121-6.
13. Zhu N, Weng S, Wang J, et al. Preclinical rationale and clinical efficacy of antiangiogenic therapy and immune checkpoint blockade combination therapy in urogenital tumors. *J Cancer Res Clin Oncol* 2019; 145: 3021-36.
14. Christofi T, Baritaki S, Falzone L, Libra M, Zaravinos A. Current perspectives in cancer immunotherapy. *Cancers* 2019; 11: 1472.
15. Torphy RJ, Schulick RD, Zhu Y. Newly emerging immune checkpoints. Promises for future cancer therapy. *Int J Mol Sci* 2017; 18: 2642.
16. Partyka A, Tupikowski K, Kolodziej A, et al. Association of 3' nearby gene BTLA polymorphisms with the risk of renal cell carcinoma in the Polish population. *Urol Oncol* 2016; 34: 419.e13-9.
17. Tupikowski K, Partyka A, Kolodziej A, et al. CTLA-4 and CD28 genes' polymorphisms and renal cell carcinoma susceptibility in the Polish population – a prospective study. *Tissue Antigens* 2015; 86: 353-61.
18. Pawlak E, Karabon L, Wlodarska-Polinska I, et al. Influence of CTLA-4/CD28/ICOS gene polymorphisms on the susceptibility to cervical squamous cell carcinoma and stage of differentiation in the Polish population. *Hum Immunol* 2010; 71: 195-200.
19. Suwalska K, Pawlak E, Karabon L, et al. Association studies of CTLA-4, CD28, and ICOS gene polymorphisms with B-cell chronic lymphocytic leukemia in the Polish population. *Hum Immunol* 2008; 69: 193-201.
20. Karabon L, Pawlak E, Tomkiewicz A, et al. CTLA-4, CD28, and ICOS gene polymorphism associations with non-small-cell lung cancer. *Hum Immunol* 2011; 72: 947-54.
21. Sun T, Zhou Y, Yang M, et al. Functional genetic variations in cytotoxic T-lymphocyte antigen 4 and susceptibility to multiple types of cancer. *Cancer Res* 2008; 68: 7025-34.
22. Zhang Y, Zhang J, Deng Y, et al. Polymorphisms in the cytotoxic T-lymphocyte antigen 4 gene and cancer risk: a meta-analysis. *Cancer* 2011; 117: 4312-24.
23. Yang J, Liu J, Chen Y, et al. Association of CTLA-4 tagging polymorphisms and haplotypes with hepatocellular carcinoma risk: a case-control study. *Medicine* 2019; 98: e16266.
24. Ge J, Zhu L, Zhou J, et al. Association between co-inhibitory molecule gene tagging single nucleotide polymorphisms and the risk of colorectal cancer in Chinese. *J Cancer Res Clin Oncol* 2015; 141: 1533-44.
25. Tang W, Chen S, Kang M, Liu J, Liu C. Investigation of BTLA tagging variants with risk of esophagogastric junction adenocarcinoma. *Biosci Rep* 2019; 39: BSR20191770.
26. Karabon L, Markiewicz M, Kosmaczewska A, et al. Pretransplant donor and recipient CTLA-4 mRNA and protein levels as a prognostic marker for aGvHD in allogeneic hematopoietic stem cell transplantation. *Immunol Lett* 2015; 165: 52-9.
27. Wagner M, Sobczynski M, Karabon L, et al. Polymorphisms in CD28, CTLA-4, CD80 and CD86 genes may influence the risk of multiple sclerosis and its age of onset. *J Neuroimmunol* 2015; 288: 79-86.
28. Marron-Linares GM, Nunez L, Hermida-Prieto M. LIGHT/BTLA polymorphisms and antibody-mediated-rejection after heart transplantation. *Oncotarget* 2018; 9: 35799-800.
29. Hancock SB, Georgiades CS. Kidney cancer. *Cancer J* 2016; 22: 387-92.
30. Majewski J, Ott J. Distribution and characterization of regulatory elements in the human genome. *Genome Res* 2002; 12: 1827-36.
31. Baralle D, Baralle M. Splicing in action: assessing disease causing sequence changes. *J Med Genet* 2005; 42: 737-48.
32. Fu Z, Li D, Jiang W, et al. Association of BTLA gene polymorphisms with the risk of malignant breast cancer in Chinese women of Heilongjiang Province. *Breast Cancer Res Treat* 2010; 120: 195-202.
33. Kumar R, Wang R. Structure, expression and functions of MTA genes. *Gene* 2016; 582: 112-21.
34. Li H, Sun L, Xu Y, et al. Overexpression of MTA3 correlates with tumor progression in non-small cell lung cancer. *PLoS One* 2013; 8: e66679.
35. Si W, Huang W, Zheng Y, et al. Dysfunction of the reciprocal feedback loop between GATA3- and ZEB2-nucleated repression programs contributes to breast cancer metastasis. *Cancer Cell* 2015; 27: 822-36.
36. Dong H, Guo H, Xie L, et al. The metastasis-associated gene MTA3, a component of the Mi-2/NuRD transcriptional repression complex, predicts prognosis of gastroesophageal junction adenocarcinoma. *PLoS One* 2013; 8: e62986.
37. Bruning A, Juckstock J, Blankenstein T, Makovitzky J, Kunze S, Mylonas I. The metastasis-associated gene MTA3 is downregulated in advanced endometrioid adenocarcinomas. *Histol Histopathol* 2010; 25: 1447-56.
38. Ding D, Zhang Y, Wen L, et al. MiR-367 regulates cell proliferation and metastasis by targeting metastasis-associated protein 3 (MTA3) in clear-cell renal cell carcinoma. *Oncotarget* 2017; 8: 63084-95.