

A study on the global burden of non-melanoma skin cancer from 1990 to 2019

Keywords

Global burden of disease, Non-melanoma skin cancer, Changing trends

Abstract

Introduction

This study aims to provide an overview and analysis of the global disease burden of non-melanoma skin cancer using data from the GBD 2019 database.

Material and methods

This study utilized the global GBD 2019 disease data. The data was categorized into various subgroups based on region, socio-demographic index (SDI), country, gender, and age. We analyzed Incidence Cases, Incidence Rate, disability-adjusted life years (DALYs), DALY Rate, as well as age-standardized indicators and their annualized percent change (EAPC).

Results

The global burden of non-melanoma skin cancer exhibited an increasing trend from 1990 to 2019. The EAPC for age-standardized incidence rate (ASIR) was 1.13, and the EAPC for age-standardized DALY rate was 0.20. Geographic variations were observed, with the most substantial increase in ASIR observed in High-income North America (EAPC: 2.20), and a significant increase in age-standardized DALY rate in Central Asia (EAPC: 2.32). Countries with high SDI had the highest ASIR and showed the most significant increasing trend (EAPC: 1.97). Overall, the burden of disease for non-melanoma skin cancer increased in all countries globally from 1990 to 2019. The EAPC for incidence cases, DALYs, and ASIR was greater than 0 in almost all countries worldwide, indicating an overall increasing trend.

Conclusions

The global disease burden of non-melanoma skin cancer exhibited significant increasing changes from 1990 to 2019. Several countries in Asia, Africa, and North America experienced a severe disease burden.

A study on the global burden of non-melanoma skin cancer from 1990 to 2019

Abstract

Introduction: This study aims to provide an overview and analysis of the global disease burden of non-melanoma skin cancer using data from the GBD 2019 database.

Material and methods: This study utilized the global GBD 2019 disease data. The data was categorized into various subgroups based on region, socio-demographic index (SDI), country, gender, and age. We analyzed Incidence Cases, Incidence Rate, disability-adjusted life years (DALYs), DALY Rate, as well as age-standardized indicators and their annualized percent change (EAPC).

Results: The global burden of non-melanoma skin cancer exhibited an increasing trend from 1990 to 2019. The EAPC for age-standardized incidence rate (ASIR) was 1.13, and the EAPC for age-standardized DALY rate was 0.20. Geographic variations were observed, with the most substantial increase in ASIR observed in High-income North America (EAPC: 2.20), and a significant increase in age-standardized DALY rate in Central Asia (EAPC: 2.32). Countries with high SDI had the highest ASIR and showed the most significant increasing trend (EAPC: 1.97). Overall, the burden of disease for non-melanoma skin cancer increased in all countries globally from 1990 to 2019. The EAPC for incidence cases, DALYs, and ASIR was greater than 0 in almost all countries worldwide, indicating an overall increasing trend.

Conclusions: The global disease burden of non-melanoma skin cancer exhibited

significant increasing changes from 1990 to 2019. Several countries in Asia, Africa, and North America experienced a severe disease burden.

Keywords: Global burden of disease; Non-melanoma skin cancer; Changing trends

Preprint

Introduction

Non-melanoma skin cancer encompasses a range of skin tumors, with the most prevalent being basal cell carcinoma and squamous cell carcinoma. Squamous cell carcinoma is a malignant tumor derived from keratinocytes in the epidermis, typically presenting as rough keratinizing papules, verrucous hyperplasia, or rapidly growing tender protrusions, often containing a central keratinous core. This condition poses a significant threat to the health and quality of life of affected individuals [1]. The main risk factors for cutaneous squamous cell carcinoma include exposure to ultraviolet radiation, ionizing radiation, HPV virus, chemical agents, immunosuppression, and chronic skin injury or inflammation [2]. In the United States alone, over 1 million cases of squamous cell carcinoma are diagnosed annually [3]. Moreover, studies have consistently demonstrated a global increase in the incidence of non-melanoma skin cancer [4, 5]. The substantial prevalence and large number of affected individuals undoubtedly contribute to a significant burden of disease, imposing substantial economic losses and placing immense pressure on healthcare systems. Consequently, an important undertaking is to analyze the global burden of non-melanoma skin cancer and develop pertinent strategies for public health prevention and control.

The Global Burden of Disease 2019 (GBD 2019) is a global health statistics database created by the Global Health and Disease Burden Collaboration, led by **Institute for Health Metrics and Evaluation (IHME)**. The primary objective of this

database is to quantify the global burden of various diseases on human health by utilizing disease burden indicators. Numerous studies have been conducted based on this database, offering a more comprehensive perspective on the global health status of different diseases.

Limited research has been conducted on the global disease burden of non-melanoma skin cancer. In this study, we examined the data on non-melanoma skin cancer from the GBD 2019 database, which provides information from 1990 to 2019. Indicators such as Incidence Cases, Incidence Rate, DALYs, and DALY Rate were used to assess the risk associated with this disease. We evaluated the disease burden and its changing patterns in various subgroups, including regions, countries, and age groups. Analyzing the GBD 2019 data can provide insights into the global burden of non-melanoma skin cancer and its temporal trends. This information can contribute to the development of effective health policies and prevention strategies aimed at reducing the burden of this disease.

Materials (or Subjects) and Methods

Data sources

The data utilized in this study are derived from GBD 2019, a comprehensive and ongoing research initiative led by the Global Collaboration on Health and the Burden of Disease. GBD 2019 encompasses an extensive range of disease-related data,

encompassing burden assessment, risk factor analysis, age and sex stratification information, geographical distribution, and temporal trends, among others. The objective of this study is to quantitatively assess the global impacts of various diseases, injuries, and health risk factors on human health. Numerous investigations [6, 7] have extensively cited the burden of disease data contained within the GBD 2019 database, facilitating a systematic assessment of the worldwide distribution and trends in disease burden. These findings not only serve as a reliable foundation for global health research but also aid in policy development. This study is based on a publicly available database and does not require ethical approval.

Diagnostic criteria for diseases

Non-melanoma skin cancer is a malignancy that originates from squamous cells in the epithelium of the skin. Typically, it presents as a mass or ulcer on the skin, characterized by irregular margins and changes in color. The diagnosis is established through a pathologic examination of the tissue from the lesion. In the International Classification of Diseases (ICD-10), non-melanoma skin cancer is assigned the codes C44-C44.9, D04-D04.9, and D49.2. In the previous version, the ICD-9, the codes were 173-173.9, 222.4, 232-232.9, and 238.2.

Burden of disease data

The GBD 2019 database encompassed disease burden data from 204 countries and 21 world regions. In 2019, these countries were categorized into five groups based on their socio-demographic index (SDI): High SDI, high-middle SDI, middle SDI, low-middle SDI, and Low SDI. SDI serves as a measure of overall socio-economic development and comprises three indicators: per capita income, average years of education, and fertility rate of the population under 25 years old. The index value ranges from 0 to 1, with higher values indicating greater levels of socio-economic and demographic advancement.

A range of disease burden indicators from the GBD 2019 database were chosen for analysis. These indicators include: Incidence Cases, Incidence Rate, DALYs, and DALY Rate.

Incident cases pertain to the initial and inaugural manifestation of a disease within a designated timeframe. This encompasses instances where individuals had not previously experienced the aforementioned condition, but have now exhibited symptoms for the first time during the period of inquiry, **the same person being examined will only use data from their first medical examination.** The Incidence Rate denotes the proportion of newly incurred cases in relation to either the overall population or the duration of exposure of a specific populace within a specified time frame. Typically, this rate is expressed in units of 1000 or 100,000 individuals.

DALYs represent a combined measure of Years of Life Lost (YLL) and Years

Lived with Disability (YLD). This metric offers a comprehensive assessment of the impact that diseases have on both the duration and quality of individuals' lives. To calculate DALYs, the following formula is employed:

$$DALYs = YLL + YLD$$

The DALY Rate is used to standardize the total number of DALYs in a specific population, this metric offers a relative measure of how a disease impacts the overall health of a population, regardless of its size.

The age-standardized rate (ASR) is a useful tool for standardizing the measurement of disease burden, typically expressed per 100,000 individuals. It enables comparisons of disease measures across areas with varying population structures or within the same area over different time periods. The calculation of ASR is as follows:

$$ASR = \frac{\sum_{i=1}^A a_i w_i}{\sum_{i=1}^A w_i} \times 100,000$$

Where a_i denotes the index of disease burden in the i th age group, and w_i denotes the corresponding standard population weight.

The Estimated Annual Percentage Change (EAPC) is a statistical indicator commonly employed in the domains of epidemiology and health research to depict time trends. The EAPC is determined by fitting the natural logarithm of age-standardized rates to best represent the change trend. The calculation of EAPC is done through the following formula:

$$y = \alpha + \beta x + \varepsilon, \quad y = \ln(\gamma)$$

$$EAPC = 100 \times (\exp(\beta) - 1)$$

Where x represents the year, γ represents the standardized rate, and ε represents the residual. An EAPC greater than 0 indicates an upward trend in the index. The magnitude of the absolute value of EAPC corresponds to the significance of the upward trend.

Conversely, an EAPC less than 0 indicates a downward trend in the indicators, with the magnitude of the absolute value of EAPC reflecting the significance of the downward trend. An EAPC equal to 0 signifies that the indicator remained relatively unchanged during the observation period.

Results

Trends in disease burden of non-melanoma skin cancer in different regions of the world from 1990 to 2019

Overall, these results suggest that from 1990 to 2019, there was an increase in the global age-standardized incidence rate (ASIR) for non-melanoma skin cancer, rising from 22.27 in 1990 to 30.30 in 2019. However, the age-standardized DALY rate remained relatively stable over the same time period. This indicates that while the incidence of non-melanoma skin cancer has been increasing globally, the overall burden of disease, as measured by DALYs, has not changed significantly. The EAPC for ASIR was 1.13 (95% CI: 0.50, 1.77), highlighting a consistent upward trend. In contrast, the EAPC for the age-standardized DALY rate was 0.20 (95% CI: 0.10, 0.30),

demonstrating a much slower rate of change. (Table 1)

Among the 21 geographic regions in the GBD 2019 database, the ASIR for Australasia increased from 202.89 (95% uncertainty interval [8]: 174.68, 233.86) in 1990 to 249.75 (95% UI: 210.03, 294.74) in a region characterized by a heavy disease burden. In High-income North America, the ASIR increased from 179.63 (95% UI: 141.66, 224.05) in 1990 to 324.18 (95% UI: 285.94, 368.52), with an EAPC of 2.20 (95% confidence interval [CI]: 1.46, 2.95), indicating a significant upward trend in disease burden. The age-standardized DALY rate for all geographic regions remained relatively stable from 1990 to 2019. Central Asia had the highest EAPC at 2.32 (95% CI: 2.05, 2.60), while Central Europe had a negative EAPC of -1.35 (95% CI: -1.50, -1.20), demonstrating a declining trend in disease burden. (Table 1; Table S1; Fig. S1)

Distribution of disease burden of non-melanoma skin cancer in different SDI regions of the world from 1990 to 2019

Countries with high SDI levels experienced higher incidence cases and DALYs compared to countries with low SDI levels. From 1990 to 2019, the incidence cases and DALYs of non-melanoma skin cancer showed a proportional increase across different SDI countries. There were no significant changes observed in ASIR and age-standardized DALY rates in these countries. However, among the countries categorized based on SDI, those with high SDI had the highest ASIR, and its growth

trend was the most significant [EAPC: 1.97, 95% confidence interval (CI): 1.30, 2.65].

On the other hand, high-middle SDI countries exhibited a downward trend in age-standardized DALY rates with an EAPC value of -0.36 (95% CI: -0.44, -0.27).

(Table2; Table S2; Fig. S2)

Distribution of disease burden of non-melanoma skin cancer in different countries in the world from 1990 to 2019

In 2019, the United States of America (262.25), Greenland (576.15), and Canada (828.11) ranked as the top three countries with the highest ASIR. Conversely, Nepal (0.34), Bhutan (0.35), and Bangladesh (0.37) had the lowest ASIR. Regarding Age-standardized DALY rates, Tonga (43.01), Greenland (49.97), and Canada (65.72) demonstrated the highest rates, while Egypt (4.48), Singapore (4.96), and the Syrian Arab Republic (5.28) exhibited the lowest rates. Between 1990 and 2019, the countries showing the most significant increases in ASIR were Canada (626.85), Greenland (137.07), and the United States of America (85.08). Likewise, Canada (40.51), Saint Kitts and Nevis (23.24), and Saint Vincent and the Grenadines (16.26) experienced the most substantial increases in Age-standardized DALY Rate. (Table S3; Fig. S3)

The countries with high incidence cases included the United States of America, Canada, and Australia, among others, while the countries with high DALYs were China, the United States of America, India, and others. Both the incidence cases and DALYs

exhibited a noticeable upward trend in countries worldwide from 1990 to 2019. Notably, countries such as the United Arab Emirates (10.67), Qatar (10.63), and Canada (9.07) experienced a higher proportion of incidence cases. Likewise, the countries with the greatest proportion of DALYs increase were the United Arab Emirates (11.1), Saint Kitts and Nevis (10.12), and Qatar (8.19). (Table S4; Fig. S4)

The EAPC for cases, DALYs, and ASIR in each country were all greater than 0, demonstrating an overall increasing trend. Among them, Qatar (EAPC: 9.20, 95%CI: 8.74, 9.67), United Arab Emirates (EAPC: 8.55, 95%CI: 8.16, 8.95), and Canada (EAPC: 7.65, 95%CI: 7.46, 7.84) showed the most significant increase in incidence cases. The United Arab Emirates (EAPC: 9.12, 95%CI: 8.69, 9.55), Qatar (EAPC: 8.19, 95%CI: 7.75, 8.64), and Saint Kitts and Nevis (EAPC: 8.16, 95%CI: 6.76, 9.58) exhibited the highest increase in DALYs. Canada (EAPC: 4.77, 95%CI: 4.60, 4.93), Portugal (EAPC: 3.45, 95%CI: 3.15, 3.75), and China (EAPC: 3.25, 95%CI: 3.07, 3.43) showed the most obvious upward trend in ASIR. The change in the age-standardized DALY rate varied among countries, with Bosnia and Herzegovina (EAPC: 7.04, 95%CI: 6.20, 7.89), Georgia (EAPC: 6.40, 95%CI: 5.53, 7.27), and Saint Kitts and Nevis (EAPC: 6.02, 95%CI: 4.50, 7.57) experiencing the greatest increase. Conversely, the Republic of Korea (EAPC: -4.03, 95%CI: -4.37, -3.69), Poland (EAPC: -3.17, 95%CI: -4.03, 95%CI: -3.33, -2.59) exhibited a downward trend in age-standardized DALY rate from 1990 to 2019. (Table S3; Fig. S5)

Comparison of disease burden of non-melanoma skin cancer between different genders in different regions of the world from 1990 to 2019

From 1990 to 2019, there was a consistent upward trend in the ASIR of non-melanoma skin cancer among both men and women in all countries across the globe. This trend was supported by the fact that the EAPC value exceeded 0. Additionally, the age-standardized DALY Rate exhibited an increasing pattern in Asia, Africa, and North America.

The disease burden of non-melanoma skin cancer was more severe in males compared to females. In 1990 and 2019, Australasia and Southern Latin America had an ASIR of less than 1. Additionally, the ASIR of women in these regions was higher than that of men. (Table S5; Fig. S6)

Age distribution of non-melanoma skin cancer in different countries in the world in 2019

The incidence rate and DALYs of non-melanoma skin cancer among individuals aged 20 years and above in various countries worldwide in 2019 are depicted in the figure and table. In individuals aged 20-49 years, the incidence rate of non-melanoma skin cancer was notably low and did not exhibit a substantial increasing trend. Additionally, DALYs were comparatively lower in individuals aged 20-39 years.

Conversely, for individuals aged 40 and above, both the incidence rate and DALYs of non-melanoma skin cancer displayed a significant increase with age. Furthermore, the disease burden associated with non-melanoma skin cancer was particularly severe among individuals aged over 80 years, as evidenced by the incidence rate and DALYs, which accounted for nearly half of the total population. (Table S6; Table S7; Fig. S7)

Discussion

This study utilizes the GBD 2019 database to classify global non-melanoma skin cancer into various subgroups, including region, SDI, country, gender, and age. A comprehensive data analysis was performed, examining Incidence Cases, Incidence Rate, DALYs, DALY Rate, age-standardized indicators, and EAPC.

The study results reveal variations in the disease burden of non-melanoma skin cancer across different regions and countries. Skin type strongly correlates with non-melanoma skin cancer, particularly in individuals with lighter skin, making it the most common malignancy. Moreover, research indicates that residents in sunny regions and countries face a significantly heightened risk of developing non-melanoma skin cancer, owing to the close link between ultraviolet radiation and its incidence and mortality. These findings suggest that lower latitude regions may bear a more severe disease burden. The global disease burden of non-melanoma skin cancer exhibits regional disparities and geographic specialization. Consequently, there is a need to

develop tailored control policies based on the distribution of this disease burden across different regions, with a particular focus on high-risk areas [8-10].

The disease burden of non-melanoma skin cancer was found to vary across different SDI regions. Previous studies have also linked this burden to social indicators, work environment, occupational class, and education level [11]. Individuals with higher socioeconomic status (SES) are at a higher risk of non-melanoma skin cancer, a finding consistent with our present study. This association may be attributed to the greater frequency of outdoor activities among individuals with high SES, leading to increased exposure to UV radiation, a known risk factor for non-melanoma skin cancer.

Additionally, higher levels of awareness of non-melanoma skin cancer in rich people, could lead to enhanced screening efforts. This, in turn, may result in more thorough documentation and reporting of cases.

Gender differences in the burden of disease are well-documented [12-14], including in non-melanoma skin cancer. Globally, men have higher incidence and mortality rates for cancer compared to women [15, 16]. Specifically, the incidence of non-melanoma skin cancer is significantly higher in men than in women [17-19], with men experiencing three times higher incidence rates than women [20]. Aggarwal et al. [21], using relevant data, further found that non-melanoma skin cancer is twice as likely to cause death in men than in women. These disparities may be attributed to differences in occupational and lifestyle factors between genders. Men are more commonly exposed

to UV light due to outdoor work, and evidence consistently links occupational UV exposure to non-melanoma skin cancer risk [22]. Moreover, men tend to use UV protective equipment less frequently than women, resulting in heightened UV radiation exposure and increased disease risk.

Other studies have demonstrated a higher disease burden of non-melanoma skin cancer among the elderly, particularly evident in the increased incidence in individuals over 80 years old [23, 24]. Furthermore, the risk of non-melanoma skin cancer is higher in individuals aged 70 years and older across all age groups, while the incidence decreases significantly in those under 40 years old [25]. These observations may be attributed to the inevitable aging process of the skin with prolonged exposure to the natural environment, rendering skin cells more susceptible to carcinogenesis. The elderly typically experience a weaker immune system, resulting in reduced clearance of abnormal cells and potentially increasing the risk of malignancies. Moreover, the evolving societal landscape has led to more diverse lifestyles, including an increase in outdoor activities, exposing individuals to higher levels of external ultraviolet radiation, a known carcinogen. **Early diagnosis of diseases, such as cardiovascular disease and cancer, can be achieved through screening, leading to improved patient prognosis.**

Clinical diagnosis of non-melanoma skin cancer is challenging and susceptible to errors and misdiagnosis. Diagnosis typically involves dermoscopy and/or confocal microscopy, considering factors like age, skin phototypes, previous diagnoses, sun exposure, and

immunosuppression, alongside a thorough physical examination. It is essential to promote skin tumor screening norms to enhance public awareness and for clinicians to actively identify skin cancer risk factors in their patients through routine skin examinations. Early detection allows for non-surgical treatments like topical creams or photodynamic therapy, resulting in better long-term cosmetic outcomes, improved quality of life, and reduced morbidity and mortality associated with non-melanoma skin cancer.

However, it is important to acknowledge the limitations of this study. One limitation is this analysis lacks consideration of the impact of the pandemic period from 2020-2022, during which delays in diagnosis and access to effective treatment may have occurred due to limited access and fear of hospitalization.. Moreover, the potential variation in burden of disease data at the country level, which can be influenced by factors such as the size of the land area. For instance, countries with large land areas may experience significant differences in burden of disease between different regions, leading to inconsistencies across the entire country. Finally, the accuracy of burden of disease analysis is contingent upon the availability and quality of health data. Some regions may lack sufficient and reliable health data, which can result in inaccuracies when estimating the burden of disease for specific areas or populations. Furthermore, there may be delays in the collection and compilation of data related to disease burden, which can lead to inaccurate assessments of the current health status. Despite these

limitations, it is essential to comprehensively understand the burden of disease to formulate effective prevention and control policies.

Conclusion

With the escalating disease burden of non-melanoma skin cancer globally, it is imperative to emphasize this matter, carry out extensive investigations, and evaluate its impact in order to provide scientific substantiation for the formulation of more efficacious intervention methodologies. Additionally, the influence of diverse factors on the disease burden of non-melanoma skin cancer necessitates further scrutiny and analysis, encompassing socio-cultural, economic, geographic, educational, and healthcare resource aspects. A more profound comprehension of the interplay among these factors can facilitate a more precise assessment and interpretation of the development and fluctuations in the disease burden of non-melanoma skin cancer.

Acknowledgments

The authors would like to thank all participants who participated in the study.

Ethical Approval

The studies involving human participants were reviewed and approved by the Global Collaboration on Health and the Burden of Disease. Informed consent was obtained from all individual participants included in the study.

Conflict of Interest

The authors declare that the research was conducted in the absence of any commercial or financial relationships that could be construed as a potential conflict of interest.

Funding

The authors declare that no funds, grants, or other support were received during the preparation of this manuscript.

Author Contributions

ZS contributed to conception and design of the study. JY and YZ organized the database and performed the statistical analysis. All authors wrote the first draft of the manuscript and wrote sections of the manuscript. All authors contributed to manuscript revision, read, and approved the submitted version.

Data availability statement

The datasets generated during and/or analyzed during the current study are available in the Global Collaboration on Health and the Burden of Disease.

Preprint

Reference

1. Khalid A, van Essen P, Crittenden TA, Dean NR. The anatomical distribution of non-melanoma skin cancer: a retrospective cohort study of 22 303 Australian cases. *ANZ journal of surgery*. 2021; 91:2750-6.
2. Hawrot A, Alam M, Dermatology DRJCPi. Squamous cell carcinoma. 2003; 15:91–133.
3. Ascierto PA, Schadendorf D. Update in the treatment of non-melanoma skin cancers: the use of PD-1 inhibitors in basal cell carcinoma and cutaneous squamous-cell carcinoma. *Journal for immunotherapy of cancer*. 2022; 10.
4. Kalailingam P, Verma A, Lee YH, Thanabalu T. Conditional Knockout of N-WASP Enhanced the Formation of Keratinizing Squamous Cell Carcinoma Induced by KRas(G12D). *Cancers*. 2023; 15.
5. Sapijaszko M, Zloty D, Bourcier M, Poulin Y, Janiszewski P, Ashkenas J. Non-melanoma Skin Cancer in Canada Chapter 5: Management of Squamous Cell Carcinoma. *Journal of cutaneous medicine and surgery*. 2015; 19:249-59.
6. Lin Y, Fang K, Zheng Y, Wang HL, Wu J. Global burden and trends of neglected tropical diseases from 1990 to 2019. *Journal of travel medicine*. 2022; 29.
7. Li Y, He T, Xie J, Lv S, Li Z, Yuan M, et al. Trend of Human Schistosomiasis Japonica Prevalence in China from 1990 to 2019. *Tropical medicine and infectious disease*. 2023; 8.

8. Salomon JA, Vos T, Hogan DR, Gagnon M, Naghavi M, Mokdad A, et al. Common values in assessing health outcomes from disease and injury: disability weights measurement study for the Global Burden of Disease Study 2010. *Lancet* (London, England). 2012; 380:2129-43.
9. Reichrath J, Reichrath S. The relevance of the vitamin D endocrine system (VDES) for tumorigenesis, prevention, and treatment of non-melanoma skin cancer (NMSC): Present concepts and future perspectives. *Dermato-endocrinology*. 2013; 5:38-50.
10. Durmishi A, Fida M, Hoxha S, Naqo X, Bardhi B, Xhelili M, et al. Are military personnel at a more risk for skin cancers? *Dermatologic therapy*. 2020; 33:e14340.
11. de Kok IM, van Lenthe FJ, Avendano M, Louwman M, Coebergh JW, Mackenbach JP. Childhood social class and cancer incidence: results of the globe study. *Social science & medicine* (1982). 2008; 66:1131-9.
12. Ren J, Ceylan-Isik AF. Diabetic cardiomyopathy: do women differ from men? *Endocrine*. 2004; 25:73-83.
13. Berger U, Maywald O, Pfirrmann M, Lahaye T, Hochhaus A, Reiter A, et al. Gender aspects in chronic myeloid leukemia: long-term results from randomized studies. *Leukemia*. 2005; 19:984-9.
14. Voskuhl RR. Gender issues and multiple sclerosis. *Current neurology and neuroscience reports*. 2002; 2:277-86.
15. Haupt S, Caramia F, Klein SL, Rubin JB, Haupt Y. Sex disparities matter in cancer

development and therapy. *Nature reviews Cancer*. 2021; 21:393-407.

16. Shi B, Li W, Song Y, Wang Z, Ju R, Ulman A, et al. UTX condensation underlies its tumour-suppressive activity. *Nature*. 2021; 597:726-31.

17. Liang J, Li X, Kang C, Wang Y, Kulikoff XR, Coates MM, et al. Maternal mortality ratios in 2852 Chinese counties, 1996-2015, and achievement of Millennium Development Goal 5 in China: a subnational analysis of the Global Burden of Disease Study 2016. *Lancet (London, England)*. 2019; 393:241-52.

18. Graells J. The risk and risk factors of a second non-melanoma skin cancer: a study in a Mediterranean population. *Journal of the European Academy of Dermatology and Venereology : JEADV*. 2004; 18:142-7.

19. Armstrong BK, Kricger A. The epidemiology of UV induced skin cancer. *Journal of photochemistry and photobiology B, Biology*. 2001; 63:8-18.

20. Siegel RL, Miller KD, Fuchs HE, Jemal A. Cancer statistics, 2022. *CA: a cancer journal for clinicians*. 2022; 72:7-33.

21. Aggarwal P, Knabel P, Fleischer AB, Jr. United States burden of melanoma and non-melanoma skin cancer from 1990 to 2019. *Journal of the American Academy of Dermatology*. 2021; 85:388-95.

22. Gawkrödger DJ. Occupational skin cancers. *Occupational medicine (Oxford, England)*. 2004; 54:458-63.

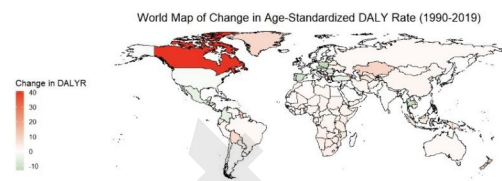
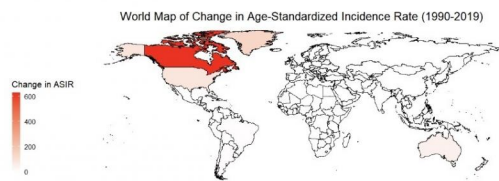
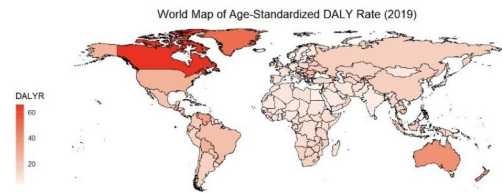
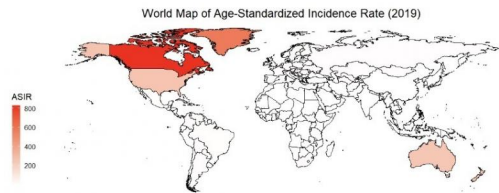
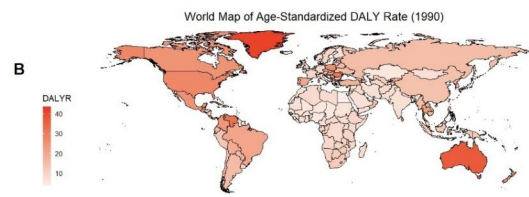
23. Oh CM, Cho H, Won YJ, Kong HJ, Roh YH, Jeong KH, et al. Nationwide Trends in

the Incidence of Melanoma and Non-melanoma Skin Cancers from 1999 to 2014 in South Korea. *Cancer research and treatment*. 2018; 50:729-37.

24. Kim HS, Cho EA, Bae JM, Yu DS, Oh ST, Kang H, et al. Recent trend in the incidence of premalignant and malignant skin lesions in Korea between 1991 and 2006. *Journal of Korean medical science*. 2010; 25:924-9.

25. Thet Z, Lam AK, Pham T, Ng SK, Steel JC, Sawhney S, et al. Clinical and economic burden of benign and malignant skin lesions in renal transplant recipients. *Internal medicine journal*. 2023; 53:2042-9.

Preprint



Preprint

Table 1. ASIR, Age-standardized DALY Rates and Trends of Non-melanoma skin cancer in Regions of the World from 1990 to 2019

Region	Age-standardized DALY Rate		EAPC (95% CI)	ASIR		EAPC (95% CI)
	1990 (95% UI)	2019 (95% UI)		1990 (95% UI)	2019 (95% UI)	
Global	14.42(13.30,15.40)	14.64(13.43,15.64)	0.20(0.10,0.30)	22.27(18.04,27.43)	30.30(26.89,34.08)	1.13(0.50,1.77)
Andean Latin America	14.84(13.10,17.17)	18.10(14.53,21.84)	0.77(0.63,0.91)	2.23(2.00,2.51)	2.65(2.31,3.00)	0.69(0.61,0.77)
Australasia	35.72(32.33,40.23)	38.68(34.11,44.15)	0.09(0.01,0.16)	202.89(174.68,233.86)	249.75(210.03,294.74)	0.58(0.43,0.73)
Caribbean	20.89(19.52,22.32)	25.72(21.65,29.74)	0.97(0.85,1.09)	2.66(2.38,2.94)	2.97(2.68,3.29)	0.41(0.34,0.47)
Central Asia	9.58(8.35,10.43)	15.57(13.31,17.14)	2.32(2.05,2.60)	2.05(1.75,2.36)	2.91(2.52,3.29)	1.40(1.17,1.64)
Central Europe	23.30(21.10,24.07)	17.01(15.00,19.15)	-1.35(-1.50,-1.20)	3.87(3.51,4.27)	4.52(4.07,4.99)	0.72(0.65,0.79)
Central Latin America	24.18(22.60,25.08)	21.46(18.44,24.75)	-0.53(-0.58,-0.49)	4.79(4.14,5.47)	5.07(4.39,5.81)	0.34(0.25,0.43)
Central sub-Saharan Africa	8.55(5.48,10.93)	10.62(6.98,13.89)	0.86(0.77,0.94)	0.77(0.67,0.88)	0.85(0.75,0.98)	0.47(0.37,0.57)
East Asia	14.64(12.90,16.45)	16.60(14.11,19.12)	1.03(0.76,1.30)	0.80(0.70,0.92)	2.08(1.76,2.42)	3.19(3.01,3.37)
Eastern Europe	15.30(14.18,16.16)	17.09(15.12,19.10)	0.10(-0.19,0.40)	2.40(2.01,2.80)	2.93(2.44,3.48)	0.97(0.84,1.11)
Eastern Sub-Saharan Africa	8.78(5.12,11.06)	11.66(6.54,14.69)	1.12(1.06,1.18)	0.78(0.68,0.89)	0.87(0.76,1.00)	0.47(0.40,0.55)
High-income Asia Pacific	7.55(7.19,7.82)	6.00(5.37,6.42)	-0.80(-0.89,-0.70)	0.78(0.67,0.91)	1.21(0.99,1.44)	1.37(1.19,1.54)
High-income North America	27.60(23.24,33.08)	30.91(25.05,38.75)	0.42(-0.02,0.87)	179.63(141.66,224.05)	324.18(285.94,368.52)	2.20(1.46,2.95)
North Africa and Middle East	9.11(7.81,10.58)	9.08(8.11,10.14)	0.01(-0.04,0.06)	1.03(0.91,1.16)	1.15(1.01,1.30)	0.45(0.26,0.64)
Oceania	13.11(10.78,16.05)	14.56(11.53,18.65)	0.41(0.35,0.48)	0.67(0.61,0.74)	0.71(0.65,0.78)	0.24(0.21,0.27)
South Asia	7.13(4.67,8.68)	6.53(5.02,7.76)	-0.44(-0.50,-0.37)	0.39(0.33,0.45)	0.38(0.33,0.44)	-0.02(-0.05,0.00)
Southeast Asia	15.74(13.65,18.02)	15.66(13.52,17.62)	-0.21(-0.33,-0.10)	0.86(0.77,0.96)	0.88(0.79,0.98)	0.10(0.04,0.16)
Southern Latin America	14.80(13.74,16.16)	16.10(14.57,17.05)	0.31(0.27,0.35)	5.98(5.20,6.80)	9.86(8.61,11.16)	1.62(1.32,1.93)
Southern sub-Saharan Africa	12.13(10.12,13.60)	15.72(14.19,17.00)	1.21(1.09,1.32)	4.21(3.44,5.05)	6.51(5.29,7.82)	1.25(0.62,1.89)
Tropical Latin America	20.68(19.56,21.60)	22.10(19.88,23.36)	0.35(0.28,0.42)	2.99(2.57,3.45)	5.07(4.29,5.91)	1.89(1.75,2.03)
Western Europe	11.29(10.62,11.61)	9.90(9.04,10.44)	-0.24(-0.38,-0.11)	5.58(4.99,6.20)	6.87(5.93,7.89)	0.89(0.80,0.99)
Western sub-Saharan Africa	5.64(4.68,6.64)	7.71(5.90,9.26)	1.30(1.18,1.41)	0.42(0.37,0.49)	0.48(0.42,0.56)	0.56(0.52,0.59)

Table 2. ASIR, Age-standardized DALY Rate and Trends of Non-melanoma skin cancer in Countries with Different SDI Levels of the World from 1990 to 2019

SDI	Age-standardized DALY Rate			ASIR		
	1990 (95% UI)	2019 (95% UI)	EAPC (95% CI)	2019 (95% UI)	2019 (95% UI)	EAPC (95% CI)
High SDI	16.03(14.38,18.06)	16.64(14.35,19.52)	0.20(-0.10,0.49)	67.94(54.74,84.13)	116.50(102.73,132.17)	1.97(1.30,2.65)
High-middle SDI	15.84(14.95,16.60)	14.12(12.96,15.12)	-0.36(-0.44,-0.27)	3.52(3.07,4.06)	4.24(3.76,4.76)	0.67(0.54,0.80)
Middle SDI	14.27(13.13,15.40)	15.38(13.80,16.79)	0.55(0.41,0.69)	1.34(1.18,1.53)	2.07(1.78,2.39)	1.43(1.34,1.51)
Low-middle SDI	11.04(8.97,12.59)	12.73(11.23,13.96)	0.68(0.58,0.78)	0.85(0.75,0.96)	1.22(1.07,1.40)	1.31(1.25,1.36)
Low SDI	7.42(4.98,8.88)	8.91(6.00,10.61)	0.70(0.66,0.73)	0.57(0.50,0.66)	0.65(0.57,0.75)	0.51(0.47,0.54)

Preprint

Table S1. DALYs, Incidence Cases and Trends of Non-melanoma skin cancer in All Countries of the World from 1990 to 2019

Region	DALYs			Incidence Cases		
	1990	2019	Growth Ratio	1990	2019	Growth Ratio
Global	561291.94	1181529.59	2.11	756481.37	2402220.86	3.18
Andean Latin America	3155.95	10191.43	3.23	419.85	1436.33	3.42
Australasia	8221.32	19247.38	2.34	46825.44	126453.86	2.7
Caribbean	5425.17	13294.7	2.45	653.87	1540.54	2.36
Central Asia	4566.57	11287.33	2.47	895.55	1851.23	2.07
Central Europe	31598.71	35219.28	1.11	5194.06	9874.97	1.9
Central Latin America	21063.93	50565.23	2.4	3657.65	11593.97	3.17
Central Sub-Saharan Africa	1874.92	5710.79	3.05	139.27	378.77	2.72
East Asia	133981.66	332830.58	2.48	5722.51	41696.02	7.29
Eastern Europe	40503.48	55357.49	1.37	6066.89	10100.7	1.66
Eastern Sub-Saharan Africa	6416.89	18836.08	2.94	476.64	1205.08	2.53
High-income Asia Pacific	14506.97	26707.45	1.84	1355.34	6863.63	5.06
High-income North America	94768.62	193953.94	2.05	641232.27	2085596.77	3.25
North Africa and Middle East	15482.96	38525.52	2.49	1503.45	4347.28	2.89
Oceania	389.9	1043.77	2.68	14.31	37.63	2.63
South Asia	38950.4	90033.37	2.31	1621.66	4507.15	2.78
Southeast Asia	43606.98	97002.04	2.22	1870.61	4717.66	2.52
Southern Latin America	6628.21	13296.74	2.01	2593.43	8334.75	3.21
Southern Sub-Saharan Africa	3365.02	8691.52	2.58	1103.28	3514.14	3.19
Tropical Latin America	19448.64	53224.82	2.74	2560.46	12085.06	4.72
Western Europe	62067.54	89530.11	1.44	32239.94	65275.45	2.02
Western Sub-Saharan Africa	5268.1	16980.02	3.22	334.88	809.87	2.42

Table S2. DALYs, Incidence Cases and Trends of Non-melanoma skin cancer in Countries with Different SDI Levels of the World from 1990 to 2019\

SDI	DALYs			Incidence Cases		
	1990	2019	Growth Ratio	1990	2019	Growth Ratio
High SDI	163230.82	311830.33	1.91	706825.52	2252560.56	3.19
High-middle SDI	162609.92	278962.66	1.72	33081.09	84862.35	2.57
Middle SDI	151250.99	371725.68	2.46	11347.94	46954.83	4.14
Low-middle SDI	66518.71	171270.17	2.57	4046.56	14814.18	3.66
Low SDI	17351.96	46977.77	2.71	1112.3	2872.95	2.58

Preprint

Table S3. Incidence Cases, DALYs and Trends of Non-melanoma skin cancer in All Countries of the World from 1990 to 2019

Country	Incidence Cases			DALYs		
	1990	2019	Growth Ratio	1990	2019	Growth Ratio
Afghanistan	40.14	76.48	1.91	575.68	1375.93	2.39
Albania	67.53	166.90	2.47	464.78	732.64	1.58
Algeria	91.67	300.13	3.27	968.02	2920.10	3.02
American Samoa	0.14	0.42	3.00	3.70	8.72	2.36
Andorra	3.82	11.32	2.96	8.79	20.53	2.34
Angola	26.30	85.09	3.23	357.07	1334.59	3.74
Antigua and Barbuda	0.74	2.10	2.85	2.28	17.17	7.52
Argentina	1514.33	3895.03	2.57	4942.56	8371.80	1.69
Armenia	50.57	132.85	2.63	199.66	654.70	3.28
Australia	39293.69	106660.85	2.71	7139.09	16109.00	2.26
Austria	398.53	841.38	2.11	1551.12	1792.19	1.16
Azerbaijan	103.31	218.36	2.11	746.57	1398.41	1.87
Bahrain	1.20	5.83	4.87	20.58	84.06	4.08
Bangladesh	161.32	422.91	2.62	3632.48	8880.41	2.44
Barbados	3.85	7.50	1.95	21.47	40.01	1.86
Belarus	313.13	503.62	1.61	2013.07	2823.52	1.40
Belgium	664.20	1344.68	2.02	1470.77	2519.40	1.71
Belize	1.56	5.36	3.44	14.64	56.21	3.84
Benin	8.27	20.88	2.53	133.04	445.32	3.35
Bermuda	1.40	4.13	2.95	7.43	17.39	2.34
Bhutan	0.57	1.75	3.05	13.03	37.30	2.86
Bolivia (Plurinational State of)	60.61	204.72	3.38	620.04	2255.60	3.64
Bosnia and Herzegovina	81.28	227.97	2.80	173.82	1038.90	5.98
Botswana	13.05	36.61	2.81	65.93	215.05	3.26
Brazil	2539.06	12018.76	4.73	19070.31	52120.38	2.73

Brunei Darussalam	1.45	3.48	2.41	18.53	29.68	1.60
Bulgaria	339.54	596.41	1.76	1690.98	2570.96	1.52
Burkina Faso	14.82	34.93	2.36	260.18	795.40	3.06
Burundi	13.87	29.37	2.12	195.51	487.99	2.50
Cambodia	28.55	86.43	3.03	762.06	2342.02	3.07
Cameroon	18.54	54.36	2.93	324.54	1330.59	4.10
Canada	64385.13	584155.61	9.07	8087.19	46478.89	5.75
Cabo Verde	0.91	1.89	2.08	10.17	29.58	2.91
Central African Republic	6.52	13.10	2.01	109.13	234.10	2.15
Chad	10.35	24.23	2.34	161.76	543.23	3.36
Chile	892.69	4034.60	4.52	1322.57	4323.94	3.27
China	5541.63	41082.68	7.41	128968.51	324237.15	2.51
Colombia	706.01	2501.79	3.54	4313.59	10005.86	2.32
Comoros	1.53	3.85	2.51	18.04	55.05	3.05
Congo	6.86	20.27	2.95	108.01	323.97	3.00
Costa Rica	93.24	244.86	2.63	361.64	896.97	2.48
Côte d'Ivoire	13.20	39.04	2.96	305.33	1102.75	3.61
Croatia	239.42	417.23	1.74	1246.45	1349.92	1.08
Cuba	417.25	857.25	2.05	3238.74	6467.86	2.00
Cyprus	34.96	113.90	3.26	128.28	242.75	1.89
Czechia	840.96	2105.82	2.50	2511.02	2449.87	0.98
Democratic Republic of the Congo	94.23	247.13	2.62	1233.78	3633.56	2.95
Denmark	594.45	889.78	1.50	513.97	1160.70	2.26
Djibouti	0.93	4.55	4.91	13.36	84.40	6.32
Dominica	0.99	1.54	1.56	7.48	10.88	1.46
Dominican Republic	61.22	251.42	4.11	800.65	3403.41	4.25
Ecuador	148.56	532.07	3.58	874.57	3105.67	3.55
Egypt	154.47	360.01	2.33	1135.32	2868.63	2.53

El Salvador	77.37	200.24	2.59	200.49	751.27	3.75
Equatorial Guinea	1.21	3.90	3.23	15.59	53.80	3.45
Eritrea	5.12	16.66	3.25	71.24	295.68	4.15
Estonia	57.96	93.74	1.62	312.99	372.57	1.19
Ethiopia	111.90	297.74	2.66	1785.28	4621.32	2.59
Micronesia (Federated States of)	0.27	0.44	1.64	8.29	13.24	1.60
Fiji	1.66	3.27	1.97	46.34	73.25	1.58
Finland	395.65	761.89	1.93	511.05	918.85	1.80
France	6039.13	11707.67	1.94	7916.85	13940.96	1.76
Gabon	4.14	9.29	2.24	51.33	130.77	2.55
Georgia	109.18	210.72	1.93	373.60	1294.79	3.47
Germany	3746.46	8899.81	2.38	10401.19	13976.90	1.34
Ghana	24.05	69.79	2.90	588.31	1804.55	3.07
Greece	1065.22	1858.17	1.74	1946.46	2868.51	1.47
Greenland	127.02	368.59	2.90	12.50	32.19	2.58
Grenada	0.97	1.96	2.03	3.23	15.02	4.65
Guam	0.28	1.18	4.18	5.33	19.12	3.59
Guatemala	131.56	506.63	3.85	901.73	3388.84	3.76
Guinea	10.71	21.46	2.00	203.41	553.09	2.72
Guinea-Bissau	1.53	2.83	1.85	30.58	79.54	2.60
Guyana	4.25	9.25	2.18	20.27	98.86	4.88
Haiti	38.22	103.53	2.71	431.41	1180.95	2.74
Honduras	53.78	172.05	3.20	267.28	912.73	3.41
Hungary	573.44	823.43	1.44	2857.07	3291.36	1.15
Iceland	14.53	33.64	2.31	15.15	31.54	2.08
India	1231.44	3685.64	2.99	30268.86	71171.79	2.35
Indonesia	640.08	1699.93	2.66	14070.67	39433.45	2.80
Iran (Islamic Republic of)	262.13	876.29	3.34	1845.92	6426.93	3.48

Iraq	42.20	126.83	3.01	743.87	2210.17	2.97
Ireland	492.02	935.77	1.90	1057.87	1325.01	1.25
Israel	341.92	1095.69	3.20	474.00	1932.75	4.08
Italy	4664.95	10106.18	2.17	9825.12	13288.11	1.35
Jamaica	18.54	37.19	2.01	106.59	245.51	2.30
Japan	993.34	5678.30	5.72	8687.94	19933.67	2.29
Jordan	16.65	70.75	4.25	194.66	678.05	3.48
Kazakhstan	213.34	471.11	2.21	721.79	2489.87	3.45
Kenya	53.75	152.44	2.84	671.93	2634.09	3.92
Kiribati	0.12	0.21	1.79	3.73	5.75	1.54
Kuwait	3.67	19.19	5.22	47.83	197.13	4.12
Kyrgyzstan	78.59	120.27	1.53	594.96	923.59	1.55
Lao People's Democratic Republic	12.22	28.54	2.34	346.77	755.92	2.18
Latvia	81.86	153.22	1.87	400.26	746.46	1.86
Lebanon	23.44	69.72	2.97	160.35	416.05	2.59
Lesotho	20.05	29.33	1.46	92.09	202.73	2.20
Liberia	4.31	8.60	2.00	71.51	191.52	2.68
Libya	12.57	38.71	3.08	155.76	514.40	3.30
Lithuania	130.40	187.04	1.43	550.06	745.68	1.36
Luxembourg	34.27	72.84	2.13	60.18	86.39	1.44
North Macedonia	53.18	123.56	2.32	224.09	565.11	2.52
Madagascar	32.33	70.68	2.19	426.88	1061.31	2.49
Malawi	19.26	42.42	2.20	324.78	844.49	2.60
Malaysia	62.04	202.29	3.26	964.61	3267.03	3.39
Maldives	0.47	1.77	3.79	8.02	23.54	2.93
Mali	37.90	89.46	2.36	245.47	798.67	3.25
Malta	25.90	66.99	2.59	45.29	77.24	1.71
Marshall Islands	0.09	0.21	2.33	2.91	6.46	2.22

Mauritania	3.95	9.72	2.46	71.19	188.08	2.64
Mauritius	3.29	9.24	2.81	46.83	113.49	2.42
Mexico	2052.55	6142.59	2.99	11422.03	23841.82	2.09
Republic of Moldova	117.52	145.00	1.23	848.96	902.89	1.06
Mongolia	17.73	45.64	2.57	75.83	193.31	2.55
Montenegro	16.58	29.99	1.81	53.30	88.44	1.66
Morocco	53.99	151.10	2.80	840.55	2568.73	3.06
Mozambique	36.83	81.48	2.21	490.48	1477.44	3.01
Myanmar	156.39	342.30	2.19	3782.67	6889.72	1.82
Namibia	14.33	42.02	2.93	73.89	192.41	2.60
Nepal	24.45	62.21	2.54	585.50	1483.04	2.53
Netherlands	1463.54	3073.12	2.10	1579.56	2528.76	1.60
New Zealand	7531.76	19793.01	2.63	1082.23	3138.38	2.90
Nicaragua	40.47	133.07	3.29	196.01	823.85	4.20
Niger	10.02	29.36	2.93	166.34	653.62	3.93
Nigeria	146.81	329.19	2.24	2224.97	6901.00	3.10
Democratic People's Republic of Korea	82.37	240.82	2.92	2531.97	5467.71	2.16
Northern Mariana Islands	0.14	0.40	2.79	5.54	8.88	1.60
Norway	399.53	701.95	1.76	513.77	806.48	1.57
Oman	6.10	17.80	2.92	104.06	272.32	2.62
Pakistan	203.88	334.65	1.64	4450.55	8460.82	1.90
Palestine	5.65	16.92	2.99	106.95	312.58	2.92
Panama	42.72	131.85	3.09	147.85	420.74	2.85
Papua New Guinea	7.98	23.70	2.97	210.60	686.46	3.26
Paraguay	21.41	66.30	3.10	378.33	1104.43	2.92
Peru	210.68	699.54	3.32	1661.34	4830.15	2.91
Philippines	186.60	530.57	2.84	5501.89	10713.88	1.95

Poland	1307.43	2406.20	1.84	10764.14	9492.86	0.88
Portugal	742.46	3319.93	4.47	2511.15	3431.58	1.37
Puerto Rico	67.30	162.60	2.42	461.86	949.75	2.06
Qatar	0.58	6.14	10.63	10.94	89.60	8.19
Romania	1001.09	1711.96	1.71	8206.38	8746.59	1.07
Russian Federation	3750.61	7107.81	1.90	26131.13	37216.61	1.42
Rwanda	17.94	42.38	2.36	264.74	707.97	2.67
Saint Lucia	1.07	3.35	3.15	6.11	19.09	3.12
Saint Vincent and the Grenadines	0.99	2.97	3.00	3.88	28.06	7.24
Samoa	0.58	1.11	1.92	15.81	26.68	1.69
Sao Tome and Principe	0.22	0.41	1.86	2.66	6.18	2.32
Saudi Arabia	30.12	98.09	3.26	422.10	1399.39	3.32
Senegal	14.88	37.74	2.54	230.61	752.30	3.26
Serbia	327.91	637.06	1.94	2215.03	3458.11	1.56
Seychelles	0.38	0.75	1.97	4.16	11.14	2.68
Sierra Leone	7.45	15.12	2.03	119.98	350.03	2.92
Singapore	25.34	102.88	4.06	193.64	381.63	1.97
Slovakia	266.68	338.86	1.27	1016.06	963.81	0.95
Slovenia	79.01	289.57	3.66	175.60	470.69	2.68
Solomon Islands	0.76	1.91	2.51	26.69	71.15	2.67
Somalia	13.37	36.38	2.72	199.88	663.00	3.32
South Africa	982.30	3287.59	3.35	2639.73	6934.18	2.63
Republic of Korea	335.21	1078.96	3.22	5606.86	6362.46	1.13
South Sudan	16.82	29.66	1.76	186.46	370.32	1.99
Spain	3679.01	6772.25	1.84	10077.39	10288.33	1.02
Sri Lanka	127.22	225.53	1.77	3195.89	4697.36	1.47
Sudan	52.47	128.65	2.45	605.49	1668.28	2.76
Suriname	3.16	8.92	2.82	19.13	59.21	3.09

Eswatini	6.51	14.14	2.17	29.65	79.32	2.68
Sweden	833.69	1348.36	1.62	1336.60	1604.02	1.20
Switzerland	1029.58	1678.59	1.63	639.85	1743.96	2.73
Syrian Arab Republic	28.21	70.24	2.49	272.30	616.84	2.27
Taiwan (Province of China)	98.51	372.52	3.78	2481.17	3125.72	1.26
Tajikistan	61.05	109.33	1.79	324.00	610.39	1.88
United Republic of Tanzania	68.98	185.56	2.69	1019.80	3154.10	3.09
Thailand	404.47	908.74	2.25	8860.50	12366.61	1.40
Bahamas	2.30	6.53	2.84	22.73	56.01	2.46
Gambia	2.06	6.36	3.10	23.71	100.14	4.22
Timor-Leste	1.68	5.91	3.51	44.95	143.79	3.20
Togo	4.88	14.47	2.96	94.17	354.19	3.76
Tonga	0.90	1.42	1.58	23.15	34.35	1.48
Trinidad and Tobago	6.66	18.13	2.72	69.67	141.85	2.04
Tunisia	35.30	103.79	2.94	349.44	963.71	2.76
Turkey	612.65	1679.92	2.74	6499.97	10843.83	1.67
Turkmenistan	32.64	87.22	2.67	192.75	642.68	3.33
Uganda	63.83	160.26	2.51	457.54	1432.89	3.13
Ukraine	1615.41	1910.26	1.18	10247.01	12549.77	1.22
United Arab Emirates	3.87	41.26	10.67	72.10	800.31	11.10
United Kingdom	5543.21	9573.45	1.73	9426.00	14855.50	1.58
United States of America	576705.47	1501039.44	2.60	86666.77	147439.77	1.70
Uruguay	186.31	404.70	2.17	362.81	600.33	1.65
Uzbekistan	229.13	455.73	1.99	1337.42	3079.59	2.30
Vanuatu	0.38	1.13	2.96	9.66	29.89	3.09
Venezuela (Bolivarian Republic of)	459.94	1560.90	3.39	3253.31	9523.16	2.93
Viet nam	244.75	669.48	2.74	5960.00	16117.02	2.70
United States Virgin Islands	1.07	2.98	2.80	5.04	18.63	3.70

Yemen	25.35	85.01	3.35	340.68	1259.32	3.70
Zambia	19.83	50.69	2.56	286.26	930.99	3.25
Zimbabwe	67.05	104.44	1.56	463.72	1067.83	2.30
Monaco	4.17	6.70	1.60	3.23	5.82	1.80
San Marino	1.98	4.50	2.27	2.33	5.78	2.48
Saint Kitts and Nevis	0.57	1.63	2.87	1.83	18.48	10.12
Cook Islands	0.06	0.15	2.45	1.49	2.22	1.50
Nauru	0.02	0.02	1.10	0.78	0.92	1.17
Niue	0.02	0.02	1.06	0.36	0.36	0.98
Palau	0.08	0.19	2.25	2.57	5.09	1.98
Tokelau	0.01	0.01	1.16	0.19	0.20	1.03
Tuvalu	0.03	0.06	2.03	1.19	1.73	1.46

Preprint

Table S4. ASIR, Age-standardized DALY Rate and Trends of Non-melanoma skin cancer in All Countries of the World from 1990 to 2019

Country	ASIR per 100000 (95% UI)			Age-standardized DALY Rate per 100000 (95% UI)		
	1990	2019	1990-2019 EAPC (95%CI)	1990	2019	1990-2019 EAPC (95%CI)
Afghanistan	0.67(0.58,0.77)	0.74(0.65,0.85)	0.47(0.38,0.56)	8.40(6.44,11.69)	10.11(7.59,13.89)	0.77(0.71,0.83)
Albania	3.56(3.02,4.19)	3.96(3.36,4.67)	0.48(0.33,0.63)	22.69(20.71,24.60)	18.02(13.55,23.50)	-0.31(-0.61,0.00)
Algeria	0.92(0.80,1.05)	1.02(0.88,1.19)	0.36(0.27,0.45)	8.63(6.30,11.02)	9.21(6.58,12.09)	0.30(0.21,0.39)
American Samoa	0.82(0.75,0.89)	1.04(0.95,1.12)	0.86(0.75,0.97)	16.34(13.78,18.82)	18.59(15.44,22.21)	0.88(0.42,1.34)
Andorra	7.53(6.25,8.90)	7.86(6.50,9.57)	0.16(0.08,0.24)	16.89(12.98,22.32)	14.42(11.11,18.45)	-0.64(-0.72,-0.56)
Angola	0.83(0.72,0.95)	0.93(0.81,1.08)	0.55(0.48,0.62)	9.00(5.58,11.91)	11.81(7.55,15.60)	1.03(0.97,1.09)
Antigua and Barbuda	1.36(1.16,1.58)	2.24(1.95,2.54)	1.92(1.80,2.03)	4.27(3.75,7.40)	17.63(10.68,20.75)	5.26(4.16,6.37)
Argentina	4.96(4.30,5.71)	7.13(5.92,8.27)	1.19(0.90,1.47)	15.76(14.42,17.37)	15.73(14.43,16.80)	-0.04(-0.09,0.02)
Armenia	2.05(1.74,2.40)	3.31(2.81,3.81)	2.11(1.74,2.50)	7.51(6.57,10.03)	16.54(13.21,19.47)	3.58(2.83,4.35)
Australia	204.32(174.85,238.79)	250.40(207.82,298.24)	0.52(0.37,0.67)	37.28(33.78,41.93)	38.62(33.92,44.32)	-0.12(-0.24,0.00)
Austria	3.34(3.00,3.72)	4.51(3.81,5.27)	0.86(0.69,1.03)	14.08(10.19,15.02)	10.06(9.09,11.00)	-0.67(-1.35,0.01)
Azerbaijan	2.15(1.82,2.52)	2.63(2.19,3.16)	0.93(0.61,1.25)	13.56(11.74,15.52)	14.11(11.75,17.01)	0.06(-0.02,0.13)
Bahamas	1.58(1.36,1.83)	1.78(1.52,2.01)	0.51(0.44,0.59)	13.64(12.09,15.58)	14.18(11.58,17.26)	0.21(0.13,0.29)
Bahrain	0.96(0.89,1.05)	0.81(0.73,0.91)	-0.57(-0.62,-0.51)	11.85(10.17,13.67)	8.77(6.80,10.92)	-2.09(-2.48,-1.70)
Bangladesh	0.42(0.37,0.47)	0.37(0.33,0.42)	-0.44(-0.51,-0.38)	7.62(4.46,10.07)	6.87(3.39,9.48)	-0.38(-0.46,-0.31)
Barbados	1.35(1.15,1.57)	1.56(1.34,1.80)	0.61(0.52,0.71)	7.61(6.94,8.44)	8.53(7.07,10.10)	0.39(0.29,0.48)
Belarus	2.52(2.33,2.74)	3.14(2.68,3.62)	1.06(0.95,1.17)	16.08(13.24,18.70)	18.62(14.30,23.64)	0.61(0.47,0.75)
Belgium	4.36(3.79,4.93)	5.69(4.85,6.60)	0.88(0.80,0.96)	10.20(9.59,10.87)	11.65(10.26,12.68)	0.75(0.53,0.98)
Belize	1.72(1.48,1.93)	2.06(1.79,2.35)	0.68(0.64,0.73)	14.90(11.57,17.70)	18.96(16.35,21.94)	0.77(0.56,0.98)
Benin	0.45(0.39,0.51)	0.47(0.41,0.54)	0.28(0.25,0.31)	6.34(4.79,7.87)	7.69(5.39,10.29)	0.68(0.55,0.82)
Bermuda	2.34(2.00,2.70)	3.16(2.75,3.63)	1.12(1.07,1.18)	12.11(10.05,15.48)	13.76(11.46,16.70)	0.80(0.49,1.11)
Bhutan	0.29(0.26,0.33)	0.35(0.31,0.40)	0.69(0.62,0.76)	5.25(3.05,7.40)	6.81(4.02,9.33)	0.98(0.93,1.04)
Bolivia (Plurinational State of)	2.23(1.90,2.60)	2.64(2.26,3.03)	0.68(0.62,0.73)	19.33(15.55,24.95)	27.02(20.36,34.55)	1.10(0.98,1.22)
Bosnia and Herzegovina	2.11(1.74,2.51)	4.04(3.42,4.70)	2.41(2.32,2.51)	4.27(3.91,4.67)	19.77(14.94,24.35)	7.04(6.20,7.89)
Botswana	2.44(2.02,2.88)	2.90(2.40,3.48)	0.71(0.56,0.87)	11.60(9.08,14.57)	15.14(11.34,19.97)	0.63(0.31,0.96)

Brazil	3.04(2.60,3.51)	5.16(4.36,6.02)	1.89(1.75,2.04)	20.77(19.68,21.74)	22.16(19.95,23.49)	0.34(0.27,0.41)
Brunei Darussalam	2.73(2.39,3.06)	2.17(1.92,2.46)	-0.77(-0.91,-0.62)	18.99(16.36,21.77)	11.54(10.03,13.29)	-2.10(-2.33,-1.87)
Bulgaria	3.21(2.75,3.74)	3.99(3.68,4.31)	0.66(0.57,0.75)	15.88(14.75,17.21)	19.53(15.46,23.90)	1.03(0.78,1.29)
Burkina Faso	0.40(0.35,0.46)	0.43(0.37,0.50)	0.36(0.32,0.41)	5.89(4.37,7.53)	7.43(5.13,9.50)	0.85(0.78,0.93)
Burundi	0.71(0.62,0.81)	0.80(0.70,0.92)	0.50(0.42,0.58)	8.43(5.35,11.29)	10.78(5.55,15.11)	0.94(0.86,1.03)
Cabo Verde	0.39(0.34,0.46)	0.44(0.37,0.51)	0.44(0.37,0.52)	4.37(3.84,4.98)	6.67(5.32,8.89)	0.73(0.40,1.05)
Cambodia	0.77(0.69,0.84)	0.85(0.78,0.94)	0.40(0.38,0.42)	15.51(11.72,21.48)	19.11(13.80,23.92)	0.68(0.62,0.74)
Cameroon	0.48(0.43,0.54)	0.52(0.46,0.59)	0.39(0.35,0.42)	6.88(5.65,8.26)	9.05(6.83,11.75)	1.01(0.89,1.13)
Canada	201.26(166.90,241.25)	828.11(662.34,1019.38)	4.77(4.60,4.93)	25.21(19.31,32.92)	65.72(44.85,93.96)	3.23(3.00,3.45)
Central African Republic	0.70(0.60,0.82)	0.76(0.66,0.87)	0.40(0.35,0.45)	9.37(6.20,12.35)	10.67(7.16,14.72)	0.58(0.51,0.64)
Chad	0.40(0.35,0.46)	0.49(0.43,0.56)	0.78(0.73,0.82)	5.52(3.62,7.16)	8.32(5.10,11.07)	1.59(1.41,1.76)
Chile	10.00(8.21,11.82)	16.95(14.52,19.64)	1.75(1.43,2.08)	14.10(12.89,15.41)	18.30(15.89,19.87)	0.99(0.82,1.15)
China	0.80(0.69,0.92)	2.12(1.79,2.48)	3.25(3.07,3.43)	14.60(12.82,16.48)	16.76(14.17,19.37)	1.09(0.81,1.37)
Colombia	4.42(3.65,5.13)	4.63(3.94,5.39)	0.17(0.10,0.25)	23.93(21.73,25.29)	18.68(14.51,23.92)	-0.84(-0.99,-0.68)
Comoros	0.80(0.70,0.92)	0.89(0.77,1.01)	0.46(0.39,0.52)	8.42(4.44,11.97)	11.50(6.37,15.66)	1.14(1.05,1.23)
Congo	0.79(0.69,0.90)	0.94(0.82,1.07)	0.72(0.65,0.80)	10.41(7.95,12.83)	12.44(9.38,15.77)	0.74(0.60,0.87)
Cook Islands	0.59(0.53,0.65)	0.66(0.60,0.73)	0.38(0.33,0.44)	12.04(10.26,14.33)	9.55(7.70,11.64)	-0.61(-0.88,-0.34)
Costa Rica	5.61(5.20,6.02)	4.76(4.10,5.59)	-0.40(-0.50,-0.29)	21.06(16.96,23.42)	17.39(13.33,21.67)	-1.16(-1.49,-0.82)
Croatia	4.19(3.60,4.84)	4.71(4.03,5.33)	0.45(0.21,0.70)	22.14(18.74,24.07)	15.05(11.68,18.55)	-0.42(-1.15,0.31)
Cuba	4.20(3.68,4.67)	4.33(3.88,4.87)	0.08(-0.01,0.16)	31.94(29.24,34.66)	34.40(27.43,42.48)	0.37(0.31,0.43)
Cyprus	5.08(4.39,5.94)	6.20(5.40,7.02)	0.67(0.56,0.78)	19.18(16.54,22.56)	13.81(11.99,15.63)	-1.72(-1.92,-1.52)
Czechia	6.23(5.82,6.62)	9.67(8.37,10.97)	1.72(1.39,2.05)	19.37(17.33,20.74)	11.98(9.87,14.63)	-1.44(-1.60,-1.27)
Côte d'Ivoire	0.41(0.36,0.46)	0.44(0.40,0.50)	0.40(0.37,0.44)	6.77(5.48,8.33)	8.23(6.12,10.66)	0.74(0.62,0.86)
Democratic People's Republic of Korea	0.62(0.55,0.69)	0.81(0.73,0.90)	1.04(1.00,1.08)	15.01(11.31,19.47)	17.24(13.25,22.03)	0.59(0.46,0.73)
Democratic Republic of the Congo	0.76(0.66,0.87)	0.82(0.72,0.95)	0.38(0.27,0.50)	8.25(4.99,10.91)	10.06(6.26,13.67)	0.80(0.69,0.90)
Denmark	7.21(6.63,7.86)	7.58(6.35,9.02)	0.05(-0.07,0.16)	6.57(6.11,7.22)	10.18(8.31,11.10)	1.37(0.99,1.76)

Djibouti	0.83(0.72,0.95)	0.95(0.83,1.09)	0.58(0.52,0.64)	9.23(4.12,13.75)	14.27(6.57,21.58)	1.72(1.61,1.83)
Dominica	1.41(1.22,1.62)	1.71(1.46,1.97)	0.78(0.69,0.88)	10.81(9.09,12.57)	12.39(9.97,15.39)	0.56(0.51,0.62)
Dominican Republic	1.76(1.53,2.00)	2.80(2.46,3.13)	1.74(1.68,1.81)	19.15(16.39,22.46)	35.31(26.43,45.92)	2.90(2.46,3.34)
Ecuador	3.08(2.73,3.47)	3.91(3.43,4.41)	0.92(0.79,1.05)	16.33(14.88,17.95)	21.94(17.53,27.65)	1.57(1.26,1.88)
Egypt	0.59(0.50,0.69)	0.64(0.55,0.76)	0.39(0.32,0.47)	3.81(3.35,4.30)	4.48(3.25,6.09)	0.60(0.52,0.68)
El Salvador	2.66(2.18,3.21)	3.29(2.74,3.92)	0.76(0.63,0.89)	6.59(6.06,7.13)	12.45(9.25,16.05)	2.51(2.23,2.80)
Equatorial Guinea	0.74(0.64,0.85)	0.94(0.81,1.09)	1.09(1.00,1.19)	7.98(4.87,10.99)	11.04(7.25,15.46)	1.34(1.21,1.46)
Eritrea	0.67(0.58,0.77)	0.78(0.69,0.90)	0.63(0.58,0.67)	6.96(4.20,10.18)	10.75(6.60,15.30)	1.49(1.31,1.68)
Estonia	2.96(2.66,3.26)	3.28(2.86,3.76)	0.39(0.32,0.47)	16.05(14.39,17.48)	14.10(10.82,17.56)	-0.72(-0.95,-0.50)
Eswatini	2.36(1.93,2.82)	2.63(2.19,3.10)	0.43(0.31,0.54)	10.16(8.18,12.43)	13.68(10.17,18.97)	1.33(0.97,1.68)
Ethiopia	0.70(0.59,0.82)	0.83(0.70,0.98)	0.62(0.55,0.69)	9.04(5.65,12.44)	11.37(5.31,15.15)	0.89(0.82,0.95)
Fiji	0.64(0.59,0.71)	0.59(0.53,0.64)	-0.32(-0.37,-0.27)	12.59(10.04,15.42)	10.48(8.28,12.98)	-0.68(-0.82,-0.53)
Finland	5.57(4.49,6.80)	6.16(5.02,7.44)	0.41(0.38,0.44)	7.37(6.77,7.88)	7.57(6.69,8.34)	0.04(-0.03,0.12)
France	7.19(6.43,7.96)	8.02(6.75,9.48)	0.38(0.23,0.54)	9.80(9.21,10.46)	9.96(8.93,10.92)	0.46(-0.14,1.07)
Gabon	0.85(0.74,0.99)	1.02(0.88,1.18)	0.75(0.70,0.80)	9.42(7.13,11.72)	12.52(9.40,15.69)	1.05(0.96,1.14)
Gambia	0.61(0.52,0.71)	0.69(0.59,0.79)	0.49(0.43,0.56)	6.07(4.16,8.21)	8.79(6.14,11.36)	1.23(1.01,1.45)
Georgia	1.89(1.58,2.21)	3.39(2.94,3.88)	2.22(1.99,2.45)	6.34(5.52,8.57)	22.38(14.44,26.59)	6.40(5.53,7.27)
Germany	2.97(2.71,3.23)	4.56(3.81,5.50)	2.29(1.87,2.71)	8.63(8.14,9.01)	7.57(6.93,8.11)	-0.10(-0.45,0.25)
Ghana	0.43(0.38,0.49)	0.48(0.42,0.54)	0.43(0.40,0.46)	7.45(5.97,9.18)	8.65(6.72,11.15)	0.62(0.56,0.68)
Greece	7.20(6.19,8.43)	7.44(6.30,8.68)	0.19(0.09,0.29)	13.92(12.88,14.88)	12.24(11.23,13.23)	-0.52(-0.74,-0.30)
Greenland	439.08(358.01,540.41)	576.15(461.21,702.11)	1.00(0.90,1.10)	41.48(29.41,57.66)	49.97(34.90,69.94)	0.63(0.55,0.71)
Grenada	1.30(1.10,1.53)	1.86(1.61,2.16)	1.23(1.10,1.36)	4.58(3.98,7.91)	13.48(9.48,15.27)	4.42(3.19,5.65)
Guam	0.48(0.42,0.54)	0.63(0.57,0.71)	1.05(0.98,1.12)	7.17(6.14,8.37)	10.02(8.15,12.07)	1.90(1.37,2.42)
Guatemala	4.28(3.67,4.95)	4.89(4.21,5.63)	0.61(0.55,0.67)	24.05(20.43,28.82)	29.32(22.91,36.78)	0.74(0.30,1.18)
Guinea	0.37(0.32,0.41)	0.43(0.39,0.49)	0.68(0.65,0.72)	5.96(3.99,7.73)	8.63(5.47,11.52)	1.58(1.42,1.74)
Guinea-Bissau	0.44(0.38,0.49)	0.44(0.39,0.51)	0.13(0.10,0.16)	6.98(5.07,9.79)	8.74(6.89,11.03)	0.99(0.91,1.08)
Guyana	1.18(1.01,1.37)	1.63(1.40,1.87)	1.26(1.18,1.33)	5.17(4.29,7.61)	15.24(10.50,19.41)	4.01(3.09,4.93)
Haiti	1.38(1.19,1.58)	1.76(1.54,1.99)	0.93(0.85,1.01)	13.03(9.56,16.50)	16.47(11.14,22.55)	0.92(0.81,1.03)

Honduras	2.68(2.21,3.25)	2.93(2.46,3.53)	0.38(0.27,0.50)	11.74(9.69,13.90)	14.65(11.13,20.28)	1.04(0.91,1.17)
Hungary	4.15(3.68,4.72)	4.17(3.64,4.77)	0.14(0.05,0.23)	21.34(20.06,22.53)	17.74(14.78,21.32)	-1.15(-1.43,-0.87)
Iceland	5.09(4.20,6.36)	6.04(5.02,7.20)	0.58(0.54,0.62)	5.38(4.96,5.83)	5.77(4.60,6.45)	0.40(0.29,0.50)
India	0.38(0.33,0.45)	0.38(0.32,0.44)	0.04(0.00,0.07)	7.00(4.75,8.53)	6.38(5.01,7.65)	-0.48(-0.55,-0.40)
Indonesia	0.76(0.65,0.88)	0.93(0.80,1.08)	0.73(0.69,0.76)	12.86(9.83,15.47)	17.94(13.77,21.64)	1.20(1.06,1.33)
Iran (Islamic Republic of)	1.10(0.91,1.33)	1.27(1.05,1.52)	0.57(0.52,0.61)	7.12(5.90,8.08)	8.77(8.09,9.41)	0.84(0.58,1.10)
Iraq	0.58(0.51,0.67)	0.62(0.55,0.70)	0.21(0.15,0.26)	8.66(6.58,10.67)	8.81(6.89,10.86)	0.02(-0.04,0.07)
Ireland	11.95(10.94,12.97)	12.38(10.55,14.18)	-0.01(-0.25,0.23)	26.69(23.01,28.37)	18.09(16.27,20.14)	-0.39(-0.80,0.03)
Israel	7.19(6.10,8.48)	9.17(7.88,10.44)	0.89(0.78,1.01)	10.20(9.36,11.00)	16.35(12.09,17.86)	1.83(1.40,2.26)
Italy	5.32(4.31,6.50)	6.64(5.36,8.02)	0.83(0.77,0.90)	11.82(11.08,12.20)	9.27(8.41,9.92)	-0.76(-1.01,-0.52)
Jamaica	1.05(0.88,1.23)	1.21(1.02,1.42)	0.51(0.40,0.62)	5.98(5.33,6.71)	8.09(6.38,10.13)	1.09(0.84,1.35)
Japan	0.66(0.55,0.78)	1.20(0.96,1.45)	1.87(1.71,2.03)	5.42(5.14,5.62)	5.81(5.16,6.19)	0.44(0.37,0.52)
Jordan	1.33(1.13,1.54)	1.16(1.00,1.36)	-0.32(-0.41,-0.23)	12.87(10.77,15.44)	9.55(7.99,11.52)	-1.36(-1.51,-1.20)
Kazakhstan	1.79(1.50,2.12)	3.12(2.69,3.58)	2.20(2.05,2.35)	5.57(4.69,6.61)	14.72(11.35,17.22)	5.31(4.25,6.39)
Kenya	0.76(0.65,0.90)	0.82(0.70,0.98)	0.32(0.25,0.39)	8.24(4.48,10.49)	12.11(7.67,15.31)	1.54(1.43,1.66)
Kiribati	0.41(0.36,0.46)	0.41(0.36,0.46)	-0.02(-0.04,0.00)	9.85(8.02,11.95)	8.23(6.52,10.15)	-0.83(-0.91,-0.75)
Kuwait	0.59(0.50,0.69)	0.73(0.63,0.86)	0.83(0.76,0.90)	6.06(5.25,6.84)	7.12(5.69,8.77)	1.00(0.74,1.25)
Kyrgyzstan	2.69(2.37,3.06)	2.85(2.45,3.38)	0.22(-0.02,0.46)	19.46(16.83,22.00)	20.09(16.81,23.41)	0.00(-0.13,0.14)
Lao People's Democratic Republic	0.71(0.64,0.78)	0.78(0.70,0.86)	0.32(0.31,0.34)	15.31(11.46,21.14)	15.96(11.93,20.09)	-0.01(-0.08,0.06)
Latvia	2.36(2.11,2.62)	3.54(3.12,4.00)	1.71(1.59,1.82)	11.69(10.44,13.60)	19.08(15.34,22.84)	2.51(1.97,3.05)
Lebanon	1.12(0.92,1.33)	1.35(1.10,1.61)	1.20(0.75,1.66)	7.22(5.68,9.03)	8.00(6.38,10.79)	0.48(0.40,0.56)
Lesotho	2.14(1.79,2.57)	2.49(2.09,2.94)	0.64(0.50,0.77)	9.47(7.40,11.92)	16.16(12.21,21.21)	2.34(2.10,2.59)
Liberia	0.44(0.38,0.50)	0.47(0.41,0.53)	0.31(0.25,0.38)	6.40(4.73,8.04)	7.77(4.81,10.56)	0.85(0.76,0.95)
Libya	0.74(0.65,0.85)	0.84(0.73,0.95)	0.59(0.52,0.66)	8.09(5.56,10.59)	9.72(7.52,12.42)	0.79(0.71,0.87)
Lithuania	2.93(2.61,3.22)	3.10(2.64,3.68)	0.33(0.21,0.46)	12.38(11.13,13.57)	13.36(10.61,16.38)	0.29(0.13,0.45)
Luxembourg	6.37(5.41,7.45)	7.12(5.90,8.52)	0.40(0.32,0.48)	11.61(10.71,12.39)	8.56(7.49,10.06)	-0.86(-0.97,-0.76)
Madagascar	0.74(0.64,0.84)	0.80(0.69,0.91)	0.36(0.29,0.43)	8.28(4.56,10.72)	9.58(5.53,13.23)	0.54(0.50,0.57)

Malawi	0.64(0.57,0.73)	0.70(0.62,0.79)	0.38(0.34,0.41)	8.86(4.59,11.76)	11.61(6.14,15.88)	1.08(1.03,1.14)
Malaysia	0.75(0.67,0.85)	0.85(0.75,0.95)	0.35(0.30,0.41)	10.12(8.60,11.55)	12.32(9.70,15.45)	0.87(0.75,0.99)
Maldives	0.68(0.60,0.76)	0.62(0.54,0.70)	-0.42(-0.52,-0.32)	8.91(7.13,11.19)	7.11(5.86,8.60)	-1.13(-1.27,-0.98)
Mali	0.94(0.79,1.11)	1.04(0.87,1.22)	0.43(0.27,0.58)	5.69(4.14,7.25)	8.11(4.51,11.19)	1.36(1.28,1.44)
Malta	6.17(5.50,6.91)	7.11(5.99,8.43)	0.56(0.47,0.65)	10.99(10.13,11.82)	8.76(7.73,9.78)	-0.48(-0.61,-0.35)
Marshall Islands	0.74(0.68,0.82)	0.94(0.87,1.03)	0.90(0.81,0.98)	17.39(13.91,21.14)	18.82(13.45,26.09)	0.37(0.25,0.49)
Mauritania	0.43(0.38,0.50)	0.51(0.44,0.58)	0.64(0.61,0.67)	6.76(5.43,8.12)	8.11(4.65,11.47)	0.97(0.80,1.14)
Mauritius	0.49(0.43,0.55)	0.56(0.50,0.64)	0.51(0.41,0.61)	5.95(5.54,6.42)	6.72(5.42,8.22)	0.13(-0.03,0.30)
Mexico	5.31(4.40,6.39)	5.56(4.57,6.72)	0.35(0.17,0.53)	25.49(23.82,26.19)	20.65(17.65,23.94)	-0.92(-0.99,-0.84)
Micronesia (Federated States of)	0.77(0.70,0.84)	0.85(0.78,0.93)	0.40(0.33,0.46)	18.14(13.98,22.97)	19.31(13.60,27.42)	0.23(0.20,0.26)
Monaco	5.85(4.74,7.08)	6.89(5.64,8.34)	0.55(0.54,0.57)	5.06(4.07,6.12)	6.65(5.00,8.18)	1.19(0.87,1.51)
Mongolia	1.87(1.58,2.22)	2.28(1.91,2.66)	0.87(0.57,1.17)	7.41(6.00,8.99)	8.70(6.53,10.96)	0.59(0.42,0.76)
Montenegro	2.82(2.39,3.31)	3.19(2.65,3.76)	0.61(0.47,0.76)	8.81(7.67,10.01)	9.67(8.05,11.39)	0.42(0.30,0.54)
Morocco	0.46(0.41,0.52)	0.57(0.50,0.64)	0.89(0.82,0.95)	6.22(4.51,7.63)	8.68(6.61,10.63)	1.20(1.02,1.38)
Mozambique	0.77(0.67,0.89)	0.90(0.79,1.03)	0.66(0.61,0.70)	8.66(4.34,11.74)	13.54(7.81,18.75)	1.87(1.76,1.98)
Myanmar	0.80(0.73,0.88)	0.85(0.77,0.92)	0.22(0.19,0.25)	14.84(11.31,20.07)	14.41(11.72,17.85)	-0.18(-0.30,-0.07)
Namibia	2.12(1.80,2.49)	3.13(2.63,3.66)	1.59(1.38,1.80)	10.55(8.41,12.60)	13.78(10.79,17.45)	0.87(0.66,1.08)
Nauru	0.76(0.69,0.84)	0.85(0.78,0.93)	0.36(0.32,0.41)	19.13(14.59,25.86)	19.92(14.25,29.69)	0.09(-0.21,0.38)
Nepal	0.34(0.30,0.38)	0.34(0.30,0.38)	0.02(0.01,0.04)	6.45(3.06,9.16)	7.01(3.90,9.43)	0.26(0.13,0.40)
Netherlands	7.36(6.19,8.55)	9.05(7.68,10.78)	0.40(0.21,0.60)	8.08(7.48,8.63)	7.59(6.82,8.21)	-0.13(-0.22,-0.03)
New Zealand	195.22(149.25,248.04)	246.78(190.99,309.05)	0.91(0.71,1.11)	27.86(24.02,32.94)	39.00(31.80,45.37)	1.31(1.00,1.63)
Nicaragua	2.70(2.20,3.25)	3.10(2.52,3.71)	0.52(0.42,0.62)	11.98(10.57,13.48)	18.83(15.09,22.87)	1.79(1.17,2.40)
Niger	0.41(0.35,0.47)	0.45(0.38,0.51)	0.34(0.32,0.36)	5.51(3.74,7.16)	7.36(3.83,10.32)	1.07(0.94,1.20)
Nigeria	0.37(0.31,0.45)	0.44(0.37,0.52)	0.66(0.61,0.71)	4.87(3.80,6.08)	7.06(5.09,9.46)	1.63(1.46,1.79)
Niue	0.67(0.61,0.74)	0.79(0.72,0.87)	0.65(0.56,0.74)	16.61(13.30,20.70)	16.91(12.67,22.27)	0.04(-0.03,0.11)
North Macedonia	3.21(2.74,3.80)	4.51(3.91,5.12)	1.35(1.22,1.49)	13.36(11.72,14.92)	20.88(16.92,25.41)	2.24(1.78,2.71)
Northern Mariana Islands	1.21(1.11,1.32)	1.06(0.98,1.16)	-0.44(-0.51,-0.36)	27.41(21.12,33.98)	18.05(15.25,21.12)	-1.56(-1.80,-1.32)
Norway	5.87(4.76,7.13)	7.10(5.75,8.64)	0.75(0.62,0.89)	7.82(7.44,8.14)	8.29(7.48,8.88)	0.40(0.30,0.50)

Oman	1.16(1.02,1.29)	1.32(1.18,1.47)	0.58(0.54,0.61)	15.32(9.59,20.99)	15.12(12.91,17.59)	0.20(0.07,0.33)
Pakistan	0.40(0.34,0.47)	0.37(0.32,0.44)	-0.26(-0.33,-0.19)	7.88(4.30,10.72)	7.65(5.68,9.87)	-0.22(-0.31,-0.14)
Palau	1.13(1.04,1.22)	1.16(1.07,1.26)	0.14(0.02,0.25)	26.87(20.35,35.21)	24.46(18.90,31.03)	-0.30(-0.35,-0.25)
Palestine	0.72(0.63,0.81)	0.82(0.73,0.94)	0.56(0.49,0.63)	11.46(8.48,14.98)	11.87(9.89,14.26)	0.01(-0.18,0.21)
Panama	2.93(2.73,3.17)	3.16(2.59,3.80)	0.29(0.18,0.41)	9.39(8.53,10.56)	10.05(7.74,12.83)	0.33(0.20,0.46)
Papua New Guinea	0.59(0.53,0.66)	0.66(0.60,0.73)	0.45(0.43,0.48)	11.05(8.27,14.61)	13.94(10.37,18.83)	0.86(0.77,0.95)
Paraguay	1.08(1.01,1.15)	1.28(1.20,1.36)	0.63(0.57,0.69)	16.54(13.38,19.21)	19.74(15.01,25.09)	0.69(0.54,0.84)
Peru	1.90(1.69,2.15)	2.17(1.86,2.53)	0.60(0.52,0.69)	13.20(10.93,16.15)	14.69(10.75,19.43)	0.29(0.01,0.58)
Philippines	0.72(0.62,0.84)	0.76(0.65,0.89)	0.17(0.13,0.22)	15.89(13.37,17.83)	12.65(10.40,15.38)	-1.00(-1.21,-0.79)
Poland	3.36(2.86,3.97)	3.28(2.71,3.92)	0.28(0.09,0.47)	26.47(22.34,27.56)	13.41(11.43,15.85)	-3.17(-3.62,-2.72)
Portugal	5.68(4.99,6.53)	12.86(10.61,15.61)	3.45(3.15,3.75)	19.99(17.55,21.10)	14.57(13.21,16.00)	-1.12(-1.39,-0.85)
Puerto Rico	1.93(1.65,2.27)	2.15(1.86,2.48)	0.43(0.39,0.46)	13.15(11.96,14.43)	13.85(10.67,17.71)	0.34(0.23,0.45)
Qatar	0.58(0.52,0.66)	0.97(0.87,1.09)	2.03(1.93,2.13)	7.66(5.92,9.50)	10.41(7.65,13.60)	1.24(1.01,1.47)
Republic of Korea	1.81(1.64,2.00)	1.33(1.20,1.47)	-1.12(-1.30,-0.94)	20.28(18.80,21.64)	7.73(6.84,8.60)	-4.03(-4.37,-3.69)
Republic of Moldova	3.04(2.56,3.49)	2.53(2.16,3.02)	-0.63(-0.78,-0.48)	20.10(18.12,21.60)	16.21(13.69,18.88)	-0.80(-1.16,-0.45)
Romania	3.92(3.47,4.64)	4.51(3.95,5.34)	0.54(0.50,0.58)	31.27(29.06,32.72)	25.20(20.71,30.40)	-1.10(-1.27,-0.92)
Russian Federation	2.38(1.98,2.81)	3.02(2.48,3.63)	1.18(0.97,1.38)	15.37(14.55,16.26)	16.71(14.26,19.46)	-0.11(-0.53,0.31)
Rwanda	0.77(0.67,0.88)	0.86(0.75,0.98)	0.50(0.41,0.59)	9.36(6.34,12.23)	12.04(6.08,16.62)	0.66(0.48,0.83)
Saint Kitts and Nevis	1.63(1.39,1.89)	2.81(2.48,3.19)	2.16(1.98,2.35)	5.10(4.45,9.02)	28.34(14.14,34.54)	6.02(4.50,7.57)
Saint Lucia	1.31(1.12,1.51)	1.60(1.38,1.85)	0.79(0.74,0.83)	7.11(6.22,8.50)	9.06(7.67,10.67)	0.89(0.68,1.10)
Saint Vincent and the Grenadines	1.45(1.25,1.67)	2.35(2.08,2.65)	1.86(1.76,1.96)	5.36(4.69,9.95)	21.62(14.93,24.95)	4.50(3.55,5.46)
Samoa	0.80(0.73,0.87)	0.89(0.81,0.98)	0.44(0.38,0.50)	18.35(14.12,23.58)	18.34(13.76,23.96)	0.07(0.02,0.12)
San Marino	6.08(5.02,7.17)	6.78(5.61,8.10)	0.45(0.39,0.51)	7.42(6.16,8.66)	8.94(6.00,12.64)	1.06(0.87,1.25)
Sao Tome and Principe	0.36(0.30,0.42)	0.40(0.34,0.48)	0.51(0.45,0.57)	4.06(3.09,5.03)	5.52(4.33,6.89)	1.10(1.03,1.17)
Saudi Arabia	0.58(0.50,0.66)	0.67(0.61,0.73)	0.58(0.47,0.68)	6.80(4.24,9.25)	6.83(5.40,8.73)	-0.24(-0.39,-0.09)
Senegal	0.51(0.44,0.58)	0.55(0.48,0.62)	0.37(0.32,0.42)	6.77(4.77,8.71)	8.85(5.50,11.70)	1.19(0.98,1.41)
Serbia	3.18(2.93,3.48)	4.21(3.67,4.82)	1.16(1.02,1.31)	21.71(18.49,24.28)	23.91(19.44,29.03)	0.48(0.31,0.65)

Seychelles	0.68(0.61,0.76)	0.74(0.66,0.82)	0.38(0.31,0.45)	7.32(6.52,8.34)	9.90(8.58,11.52)	0.33(-0.14,0.79)
Sierra Leone	0.42(0.37,0.49)	0.47(0.41,0.53)	0.42(0.35,0.49)	6.10(4.33,8.19)	8.15(4.83,11.32)	1.21(1.13,1.29)
Singapore	1.35(1.18,1.52)	1.39(1.19,1.63)	-0.07(-0.28,0.15)	8.66(7.90,9.24)	4.96(4.36,5.67)	-1.86(-2.14,-1.59)
Slovakia	4.60(4.30,4.88)	3.73(3.16,4.36)	-1.02(-1.26,-0.77)	17.96(16.24,19.36)	10.93(8.80,13.43)	-1.65(-2.36,-0.94)
Slovenia	3.34(3.05,3.67)	6.43(5.83,7.04)	2.06(1.71,2.40)	7.52(5.89,9.44)	10.35(7.89,13.08)	1.52(1.13,1.92)
Solomon Islands	0.80(0.72,0.88)	0.89(0.81,0.98)	0.44(0.36,0.52)	18.58(13.52,26.02)	21.21(15.81,30.12)	0.55(0.48,0.61)
Somalia	0.67(0.59,0.77)	0.70(0.61,0.80)	0.21(0.12,0.29)	7.88(4.10,11.39)	9.82(4.34,14.98)	1.03(0.93,1.12)
South Africa	4.88(3.92,5.93)	7.58(6.14,9.15)	1.19(0.50,1.88)	12.38(10.38,13.99)	15.83(14.27,17.28)	1.18(1.04,1.31)
South Sudan	0.81(0.70,0.94)	0.91(0.78,1.06)	0.52(0.46,0.58)	7.96(4.08,11.32)	10.03(4.80,14.39)	0.98(0.88,1.08)
Spain	6.82(6.49,7.15)	6.57(5.62,7.57)	-0.28(-0.54,-0.01)	19.87(16.85,20.99)	10.27(9.28,11.65)	-2.24(-2.46,-2.03)
Sri Lanka	1.45(1.37,1.53)	0.98(0.91,1.05)	-1.31(-1.40,-1.22)	28.14(25.26,31.12)	18.64(13.85,24.86)	-2.09(-2.43,-1.75)
Sudan	0.64(0.55,0.74)	0.77(0.67,0.89)	0.79(0.70,0.89)	6.52(4.54,8.73)	8.78(6.05,11.56)	1.15(1.07,1.24)
Suriname	1.23(1.05,1.43)	1.55(1.31,1.81)	0.88(0.74,1.01)	7.13(6.24,8.00)	9.95(8.08,12.09)	1.43(1.11,1.76)
Sweden	5.60(4.54,6.96)	6.45(5.13,7.96)	0.52(0.50,0.55)	10.12(9.54,10.62)	8.37(7.67,9.13)	-0.14(-0.42,0.15)
Switzerland	9.76(9.32,10.23)	9.36(7.88,11.13)	0.25(0.01,0.50)	6.30(5.85,6.88)	9.61(7.63,10.57)	1.61(1.36,1.86)
Syrian Arab Republic	0.58(0.50,0.69)	0.65(0.56,0.76)	0.48(0.41,0.55)	5.10(3.82,6.56)	5.28(4.02,6.90)	0.09(0.01,0.18)
Taiwan (Province of China)	0.83(0.80,0.88)	0.92(0.82,1.04)	0.57(0.39,0.75)	16.22(14.40,17.23)	8.08(6.23,10.82)	-2.51(-2.72,-2.29)
Tajikistan	2.21(1.85,2.57)	2.72(2.31,3.15)	0.88(0.58,1.18)	11.57(7.72,14.51)	13.43(10.79,16.39)	0.41(0.31,0.51)
Thailand	1.38(1.28,1.50)	0.91(0.82,1.02)	-1.36(-1.55,-1.18)	23.28(19.75,27.29)	12.57(9.38,16.52)	-2.96(-3.33,-2.59)
Timor-Leste	0.73(0.66,0.82)	0.85(0.77,0.94)	0.58(0.54,0.61)	13.19(8.39,19.43)	17.35(11.30,23.17)	1.01(0.88,1.14)
Togo	0.45(0.39,0.51)	0.45(0.40,0.52)	0.10(0.08,0.12)	6.87(5.10,8.65)	8.10(5.96,10.53)	0.56(0.48,0.65)
Tokelau	0.65(0.59,0.72)	0.78(0.71,0.86)	0.59(0.56,0.62)	15.15(11.65,19.89)	15.41(11.59,20.04)	0.03(-0.04,0.10)
Tonga	1.97(1.83,2.12)	1.85(1.73,2.00)	-0.18(-0.28,-0.07)	43.61(35.36,52.78)	43.01(33.67,54.46)	-0.07(-0.15,0.01)
Trinidad and Tobago	0.83(0.72,0.94)	1.01(0.86,1.17)	0.80(0.61,0.98)	8.05(7.31,8.95)	7.96(6.00,10.43)	-0.10(-0.20,0.01)
Tunisia	0.79(0.67,0.93)	0.88(0.75,1.03)	0.40(0.37,0.44)	7.03(4.70,9.02)	7.82(5.72,10.62)	0.52(0.44,0.60)
Turkey	1.93(1.71,2.17)	2.00(1.74,2.32)	0.17(-0.25,0.59)	17.79(14.81,21.54)	12.59(10.11,15.62)	-1.24(-1.45,-1.03)
Turkmenistan	1.83(1.52,2.20)	2.38(2.02,2.82)	1.16(0.82,1.50)	8.79(7.23,11.30)	14.27(11.19,18.05)	2.52(2.11,2.92)
Tuvalu	0.60(0.54,0.66)	0.76(0.70,0.84)	0.94(0.87,1.02)	17.86(14.15,22.77)	18.05(13.79,23.99)	-0.02(-0.07,0.02)

Uganda	1.11(0.94,1.28)	1.25(1.07,1.46)	0.45(0.32,0.59)	7.34(3.67,10.16)	10.07(5.92,13.64)	1.17(1.11,1.22)
Ukraine	2.39(1.95,2.90)	2.54(2.08,3.04)	0.34(0.23,0.44)	15.17(13.11,16.98)	18.22(15.19,21.66)	0.56(0.44,0.68)
United Arab Emirates	1.00(0.86,1.13)	1.33(1.15,1.54)	1.25(1.15,1.34)	10.19(6.49,15.87)	12.02(7.25,25.00)	0.52(0.26,0.78)
United Kingdom	6.13(5.08,7.29)	7.43(6.11,8.90)	0.90(0.73,1.07)	10.90(10.35,11.22)	12.05(10.60,12.58)	0.49(0.15,0.83)
United Republic of Tanzania	0.77(0.67,0.89)	0.88(0.77,1.00)	0.54(0.46,0.62)	9.64(4.75,13.31)	12.85(6.07,17.55)	1.17(1.05,1.28)
United States of America	177.17(138.21,224.42)	262.25(235.07,293.36)	1.68(0.81,2.55)	27.90(23.68,33.33)	26.62(22.31,32.01)	-0.06(-0.53,0.41)
United States Virgin Islands	1.31(1.10,1.55)	1.74(1.47,2.06)	1.04(0.97,1.11)	5.80(4.85,6.81)	10.92(8.91,13.24)	2.96(2.48,3.43)
Uruguay	4.86(4.14,5.63)	6.98(5.83,8.30)	1.22(1.10,1.33)	9.83(9.01,10.82)	11.30(10.01,12.18)	0.77(0.44,1.10)
Uzbekistan	2.17(1.84,2.54)	2.87(2.43,3.35)	1.09(0.89,1.30)	11.51(9.29,13.20)	15.57(13.14,18.04)	1.26(1.17,1.36)
Vanuatu	0.80(0.73,0.88)	0.88(0.81,0.97)	0.39(0.34,0.43)	15.06(10.89,19.89)	17.92(12.84,23.89)	0.39(0.27,0.51)
Venezuela (Bolivarian Republic of)	5.12(4.47,5.87)	5.57(4.83,6.47)	0.44(0.39,0.48)	32.38(29.51,35.51)	33.13(25.30,42.27)	-0.18(-0.36,0.00)
Viet Nam	0.67(0.61,0.73)	0.81(0.73,0.88)	0.71(0.68,0.75)	14.27(10.32,18.34)	16.94(13.31,20.99)	0.69(0.58,0.79)
Yemen	0.59(0.51,0.68)	0.74(0.65,0.85)	0.99(0.92,1.05)	6.72(4.56,9.43)	9.21(6.79,12.20)	1.32(1.22,1.43)
Zambia	0.86(0.76,0.98)	0.94(0.82,1.07)	0.38(0.32,0.43)	10.20(6.43,13.23)	13.27(8.76,17.31)	1.07(0.97,1.16)
Zimbabwe	1.79(1.52,2.09)	1.69(1.43,1.95)	-0.65(-1.03,-0.27)	11.57(8.58,14.05)	15.22(11.81,18.81)	1.26(1.04,1.47)

Table S5. Ratio of Age-standardized DALY Rate, ASIR of Non-melanoma skin cancer in Men and Women from 1990 to 2019 in Different Regions Around the World

Region	Age-standardized DALY Rate		ASIR	
	1990	2019	1990	2019
Global	1.905354554	1.975214522	1.552833495	1.895287453
High-middle SDI	1.729364279	1.709380755	1.828878563	1.783561285
High SDI	2.602163917	2.621732909	1.716071109	1.830177743
Low-middle SDI	2.203042963	2.141891235	1.914778989	1.952290582
Low SDI	3.135896949	3.328859199	2.18093414	2.142753825
Middle SDI	1.528796602	1.605871078	1.725158451	1.871599146
Andean Latin America	1.40487712	1.234023548	1.729856501	1.537225929
Australasia	2.405753894	1.764186169	0.44874558	0.349474385
Caribbean	2.68944391	2.490543267	2.352525083	2.098797801
Central Asia	2.106915267	1.867516317	1.676515567	1.619382151
Central Europe	1.657393482	2.149851975	1.680513905	2.152858134
Central Latin America	1.393170812	1.623280778	1.502519372	1.669084038
Central sub-Saharan Africa	2.218868549	2.671979183	1.668384944	1.879695876
East Asia	1.274279877	1.243115572	1.660660147	2.070887408
Eastern Europe	1.747025942	1.961551606	1.697909599	1.864095429
Eastern Sub-Saharan Africa	2.197247726	2.86958792	1.674331542	1.847693355
High-income Asia Pacific	2.072110029	2.626083016	1.184037404	1.006338724
High-income North America	2.989510156	2.818073081	1.8208687	2.030650488
North Africa and Middle East	2.543591621	2.56122288	2.150404753	2.026081734
Oceania	2.091799101	2.348368696	2.815805631	3.034972199
South Asia	5.043834628	4.685180197	4.277014569	3.91831389
Southeast Asia	1.691116416	1.894758666	2.103307916	2.099714869
Southern Latin America	2.709758703	2.412291594	0.657714328	0.438349153
Southern sub-Saharan Africa	2.512209114	3.027735161	1.998924723	2.423552601
Tropical Latin America	2.061067193	2.283568209	1.293510582	1.243345018

Western Europe	2.261541245	2.532710181	2.404638037	2.282081348
Western sub-Saharan Africa	4.266124044	4.77810343	3.034015744	3.035035975

Preprint

Table S6. Incidence Rate of Non-melanoma skin cancer by Age Group in Countries Around the World in 2019

Country	Incidence Rate													
	20-24 years	25-29 years	30-34 years	35-39 years	40-44 years	45-49 years	50-54 years	55-59 years	60-64 years	65-69 years	70-74 years	75-79 years	80-84 years	85+ years
Afghanistan	0.02	0.03	0.07	0.14	0.27	0.45	0.70	0.95	1.66	2.85	4.11	5.49	9.30	17.31
Albania	0.05	0.08	0.25	0.57	1.55	3.18	4.29	5.01	9.36	17.28	25.08	32.60	47.22	74.15
Algeria	0.03	0.04	0.10	0.21	0.41	0.70	1.03	1.40	2.38	4.00	5.52	7.10	11.64	21.98
American Samoa	0.02	0.02	0.04	0.08	0.22	0.48	0.93	1.54	2.41	3.57	4.70	5.77	14.10	33.25
Andorra	0.11	0.19	0.56	1.22	2.77	5.19	7.89	10.88	20.34	35.78	51.61	64.03	90.64	145.76
Angola	0.03	0.04	0.08	0.16	0.32	0.57	0.98	1.54	2.50	3.78	5.01	6.23	10.80	20.53
Antigua and Barbuda	0.06	0.09	0.20	0.40	0.85	1.56	2.38	3.30	5.36	8.52	11.60	14.62	27.02	55.93
Argentina	0.14	0.24	0.65	1.36	2.73	4.75	7.13	9.83	17.19	29.31	41.67	54.42	84.67	154.51
Armenia	0.05	0.08	0.24	0.53	1.27	2.48	3.52	4.35	7.83	13.89	19.68	25.21	39.08	69.21
Australia	2.74	5.03	14.01	29.46	76.36	155.25	276.94	441.97	738.92	1163.66	1580.39	2013.70	2726.83	4239.31
Austria	0.07	0.11	0.33	0.72	1.69	3.25	4.76	6.21	11.05	19.26	27.24	34.86	52.76	94.50
Azerbaijan	0.05	0.08	0.24	0.53	1.27	2.49	3.65	4.71	7.16	10.98	14.66	18.29	26.97	43.02
Bahamas	0.05	0.08	0.19	0.37	0.81	1.50	2.27	3.11	4.76	7.32	9.68	11.99	19.23	34.59
Bahrain	0.02	0.03	0.06	0.13	0.23	0.36	0.56	0.80	1.70	3.22	4.24	5.09	10.65	22.76
Bangladesh	0.02	0.02	0.03	0.05	0.09	0.14	0.24	0.40	0.80	1.45	2.11	2.75	4.89	9.83
Barbados	0.05	0.08	0.19	0.38	0.80	1.44	2.14	2.87	4.12	5.90	7.61	9.30	16.10	33.06
Belarus	0.05	0.08	0.21	0.45	1.15	2.32	3.39	4.25	7.51	13.01	18.21	22.58	36.77	70.32
Belgium	0.08	0.14	0.41	0.92	2.16	4.12	6.40	8.93	15.25	25.36	35.08	44.13	63.22	103.25
Belize	0.05	0.08	0.19	0.38	0.85	1.59	2.41	3.35	5.24	8.16	11.08	14.00	23.27	45.99
Benin	0.03	0.04	0.07	0.13	0.19	0.27	0.47	0.80	1.29	1.96	2.59	3.14	5.28	9.93
Bermuda	0.10	0.16	0.37	0.73	1.45	2.53	3.89	5.45	8.32	12.56	16.70	20.27	35.27	66.21
Bhutan	0.02	0.02	0.04	0.06	0.10	0.16	0.26	0.39	0.76	1.37	1.97	2.60	4.68	9.35
Bolivia (Plurinational)	0.06	0.09	0.20	0.38	0.84	1.56	2.45	3.50	6.04	10.03	14.04	18.05	33.07	67.95

State of)														
Bosnia and Herzegovina	0.05	0.09	0.26	0.59	1.50	2.99	4.18	4.97	8.94	15.99	22.75	29.10	49.66	94.26
Botswana	0.07	0.11	0.28	0.57	1.17	2.06	3.66	5.91	9.27	13.77	17.92	21.35	27.68	40.15
Brazil	0.16	0.25	0.61	1.22	2.30	3.85	6.40	9.93	15.57	23.29	30.88	38.29	51.13	78.54
Brunei Darussalam	0.04	0.05	0.09	0.16	0.30	0.53	0.73	0.91	2.61	5.83	9.02	12.11	34.91	90.09
Bulgaria	0.05	0.07	0.21	0.47	1.17	2.32	3.40	4.31	9.27	18.00	26.17	33.87	49.55	80.47
Burkina Faso	0.03	0.04	0.07	0.12	0.18	0.25	0.44	0.73	1.15	1.71	2.23	2.77	4.83	9.37
Burundi	0.02	0.03	0.06	0.12	0.24	0.43	0.75	1.20	2.01	3.20	4.34	5.42	9.73	19.15
Cabo Verde	0.03	0.04	0.07	0.13	0.20	0.29	0.52	0.85	1.22	1.64	2.07	2.44	4.52	9.96
Cambodia	0.03	0.04	0.07	0.12	0.23	0.40	0.74	1.22	2.17	3.59	5.08	6.50	10.39	18.54
Cameroon	0.03	0.04	0.08	0.13	0.20	0.27	0.48	0.83	1.40	2.17	2.91	3.55	5.88	10.91
Canada	6.37	11.93	33.41	70.73	175.26	346.47	761.89	1405.04	2630.68	4309.16	5810.46	7119.19	9293.24	12155.23
Central African Republic	0.03	0.04	0.07	0.14	0.28	0.51	0.86	1.33	2.06	3.04	3.95	4.76	8.44	16.69
Chad	0.03	0.04	0.07	0.12	0.19	0.26	0.47	0.82	1.34	2.02	2.68	3.30	5.43	9.90
Chile	0.35	0.63	1.47	2.89	5.57	9.56	13.41	17.08	32.64	60.34	88.75	119.50	228.38	497.60
China	0.07	0.09	0.24	0.51	1.05	1.87	2.90	4.11	6.17	9.11	12.10	15.06	21.77	31.72
Colombia	0.08	0.13	0.32	0.67	1.67	3.36	4.91	6.29	11.16	19.59	27.93	36.04	54.62	99.20
Comoros	0.03	0.04	0.07	0.14	0.29	0.51	0.88	1.37	2.22	3.44	4.65	5.88	10.69	21.72
Congo	0.03	0.04	0.08	0.16	0.32	0.57	0.98	1.54	2.46	3.72	5.00	6.27	10.88	20.82
Cook Islands	0.01	0.02	0.04	0.07	0.16	0.31	0.54	0.90	1.40	2.28	2.97	3.81	8.56	21.40
Costa Rica	0.10	0.15	0.38	0.78	1.87	3.64	5.29	6.78	11.42	19.17	26.96	34.56	55.55	109.39
Croatia	0.05	0.08	0.31	0.72	2.02	4.22	5.49	5.73	9.67	17.30	24.66	31.81	57.85	115.40
Cuba	0.07	0.11	0.27	0.54	1.21	2.28	3.76	5.63	9.81	16.34	22.80	29.05	55.81	125.90
Cyprus	0.07	0.10	0.32	0.71	1.81	3.62	4.83	5.59	11.93	23.65	35.15	46.11	86.46	163.61
Czechia	0.08	0.14	0.48	1.09	2.87	5.82	8.69	11.34	25.05	49.03	71.19	91.03	112.64	146.92

Côte d'Ivoire	0.02	0.03	0.06	0.09	0.14	0.19	0.36	0.63	1.13	1.83	2.49	3.09	5.39	10.25
Democratic People's Republic of Korea	0.03	0.03	0.08	0.15	0.27	0.44	0.76	1.23	2.19	3.61	4.87	5.95	9.29	16.22
Democratic Republic of the Congo	0.03	0.04	0.08	0.15	0.30	0.53	0.89	1.35	2.16	3.27	4.30	5.28	9.43	18.80
Denmark	0.12	0.19	0.56	1.24	2.81	5.30	7.68	9.95	18.78	34.11	49.32	63.65	89.46	138.48
Djibouti	0.03	0.04	0.07	0.14	0.29	0.52	0.93	1.51	2.51	3.87	5.25	6.43	11.30	21.85
Dominica	0.05	0.08	0.19	0.37	0.79	1.44	2.13	2.90	4.45	6.52	8.44	10.61	19.32	38.08
Dominican Republic	0.06	0.10	0.25	0.50	1.13	2.14	3.42	4.95	7.85	12.10	16.28	20.42	29.77	50.33
Ecuador	0.07	0.11	0.24	0.47	1.02	1.88	2.88	4.03	7.44	13.09	18.74	24.29	54.24	127.04
Egypt	0.03	0.03	0.08	0.16	0.30	0.49	0.74	1.05	1.71	2.67	3.68	4.69	6.84	11.72
El Salvador	0.08	0.12	0.29	0.60	1.58	3.23	4.45	5.22	8.50	14.31	20.13	25.78	34.79	52.82
Equatorial Guinea	0.03	0.04	0.09	0.16	0.33	0.58	0.96	1.48	2.39	3.71	4.96	6.30	11.05	21.54
Eritrea	0.02	0.03	0.07	0.13	0.27	0.47	0.81	1.27	2.05	3.14	4.17	5.17	9.09	17.45
Estonia	0.05	0.08	0.21	0.46	1.12	2.20	3.21	4.04	7.16	12.43	17.38	21.77	41.58	88.15
Eswatini	0.07	0.11	0.27	0.56	1.15	2.00	3.58	5.78	8.79	12.51	15.60	18.43	23.63	33.65
Ethiopia	0.03	0.04	0.08	0.15	0.29	0.49	0.81	1.24	2.02	3.19	4.39	5.55	9.93	19.73
Fiji	0.01	0.02	0.03	0.07	0.15	0.28	0.49	0.79	1.31	2.03	2.75	3.40	8.21	17.74
Finland	0.11	0.17	0.51	1.12	2.57	4.88	7.11	9.21	16.50	28.88	41.01	52.13	66.36	92.28
France	0.12	0.19	0.58	1.30	2.97	5.61	8.44	11.37	20.15	34.79	49.20	62.58	93.06	162.03
Gabon	0.03	0.04	0.09	0.17	0.34	0.61	1.06	1.69	2.78	4.31	5.62	6.70	11.37	22.03
Gambia	0.04	0.06	0.12	0.24	0.38	0.54	0.87	1.38	2.03	2.80	3.56	4.27	6.60	11.52
Georgia	0.05	0.08	0.23	0.51	1.30	2.60	3.93	5.15	8.88	15.18	21.44	27.42	37.91	58.93
Germany	0.08	0.13	0.37	0.81	1.84	3.48	5.12	6.73	11.75	20.01	28.23	35.83	51.39	82.14
Ghana	0.03	0.05	0.09	0.16	0.22	0.28	0.46	0.78	1.29	1.98	2.61	3.14	5.20	9.35

Greece	0.11	0.18	0.55	1.23	2.87	5.46	8.12	10.71	19.14	33.39	46.94	60.08	83.17	132.97
Greenland	3.93	7.60	22.85	49.65	124.32	245.64	513.10	926.56	1807.29	3052.64	4309.18	5051.74	6313.81	7848.55
Grenada	0.06	0.08	0.19	0.38	0.83	1.53	2.28	3.09	5.21	8.47	11.41	14.02	20.34	28.52
Guam	0.02	0.02	0.04	0.07	0.19	0.41	0.69	0.98	1.50	2.22	3.08	3.67	7.88	18.57
Guatemala	0.08	0.13	0.31	0.64	1.70	3.50	5.34	7.28	12.22	20.12	28.01	35.86	57.53	100.42
Guinea	0.02	0.03	0.06	0.09	0.13	0.18	0.34	0.62	1.12	1.82	2.49	3.13	5.32	9.75
Guinea-Bissau	0.03	0.04	0.07	0.13	0.19	0.25	0.44	0.77	1.24	1.87	2.42	2.89	4.77	8.89
Guyana	0.05	0.08	0.18	0.35	0.76	1.41	2.15	2.97	4.37	6.41	8.39	10.24	17.11	33.58
Haiti	0.05	0.07	0.16	0.31	0.70	1.31	1.96	2.62	4.11	6.46	8.83	11.15	20.78	43.35
Honduras	0.08	0.12	0.30	0.61	1.51	2.97	4.37	5.73	8.69	13.21	17.70	22.25	27.54	35.83
Hungary	0.05	0.08	0.25	0.55	1.48	3.04	4.58	5.95	10.30	17.64	24.64	30.99	48.40	88.41
Iceland	0.11	0.18	0.54	1.18	2.63	4.90	7.21	9.55	16.61	28.53	40.06	50.14	63.79	84.89
India	0.02	0.02	0.04	0.06	0.12	0.19	0.28	0.38	0.79	1.50	2.21	2.85	4.91	9.66
Indonesia	0.04	0.05	0.09	0.17	0.31	0.52	0.88	1.41	2.42	3.89	5.24	6.50	10.76	20.03
Iran (Islamic Republic of)	0.05	0.06	0.15	0.31	0.56	0.90	1.34	1.87	3.19	5.28	7.37	9.66	14.47	24.42
Iraq	0.02	0.03	0.07	0.13	0.25	0.41	0.62	0.85	1.56	2.74	3.90	5.03	7.02	11.10
Ireland	0.16	0.26	0.79	1.76	4.01	7.52	11.78	16.74	32.02	57.40	82.66	106.29	146.00	218.89
Israel	0.11	0.19	0.58	1.28	2.94	5.59	8.77	12.35	22.83	40.41	57.79	74.35	109.03	189.39
Italy	0.14	0.21	0.58	1.25	2.59	4.61	7.13	10.09	16.82	27.33	37.52	46.80	77.27	144.63
Jamaica	0.05	0.07	0.16	0.31	0.65	1.20	1.79	2.42	3.47	5.05	6.61	7.99	11.42	19.82
Japan	0.05	0.05	0.09	0.16	0.27	0.44	0.66	0.95	1.91	3.54	5.14	6.67	17.38	50.75
Jordan	0.04	0.06	0.14	0.29	0.55	0.92	1.38	1.90	3.16	5.11	7.01	9.12	12.29	18.25
Kazakhstan	0.05	0.07	0.21	0.47	1.15	2.24	3.31	4.28	7.50	12.83	17.92	22.56	37.05	69.27
Kenya	0.03	0.04	0.08	0.14	0.28	0.48	0.81	1.27	2.10	3.30	4.44	5.45	9.75	19.47
Kiribati	0.01	0.02	0.03	0.06	0.13	0.23	0.37	0.57	1.01	1.60	2.21	2.90	5.03	9.21
Kuwait	0.03	0.04	0.09	0.19	0.35	0.57	0.83	1.14	1.92	3.05	4.44	5.52	8.11	12.88

Kyrgyzstan	0.05	0.07	0.21	0.47	1.12	2.18	3.50	4.99	8.28	13.44	18.53	23.74	29.54	38.96
Lao People's Democratic Republic	0.03	0.04	0.07	0.12	0.23	0.40	0.68	1.10	1.97	3.24	4.57	5.72	9.37	17.41
Latvia	0.04	0.07	0.19	0.40	1.03	2.08	3.05	3.83	7.26	13.13	18.76	24.01	47.01	101.86
Lebanon	0.05	0.06	0.17	0.35	0.65	1.06	1.52	2.02	3.40	5.71	8.06	10.31	14.83	23.99
Lesotho	0.07	0.11	0.27	0.55	1.10	1.89	3.41	5.54	8.32	11.71	14.65	17.32	22.17	32.11
Liberia	0.03	0.04	0.07	0.12	0.19	0.27	0.46	0.77	1.25	1.84	2.40	2.96	5.23	10.53
Libya	0.02	0.03	0.07	0.14	0.27	0.46	0.72	1.06	1.96	3.39	4.93	6.56	10.72	19.22
Lithuania	0.05	0.08	0.22	0.46	1.18	2.40	3.50	4.42	7.61	12.98	18.03	22.84	35.90	64.47
Luxembourg	0.11	0.18	0.54	1.20	2.76	5.22	7.71	10.22	18.34	32.28	45.89	57.57	80.34	125.27
Madagascar	0.02	0.03	0.07	0.13	0.27	0.48	0.82	1.31	2.11	3.19	4.25	5.25	9.17	18.12
Malawi	0.02	0.03	0.05	0.10	0.20	0.35	0.60	0.96	1.72	2.83	3.87	4.78	8.79	17.49
Malaysia	0.03	0.04	0.09	0.16	0.31	0.53	0.86	1.29	2.15	3.39	4.77	5.99	9.83	18.72
Maldives	0.03	0.04	0.08	0.14	0.24	0.38	0.63	0.96	1.55	2.43	3.24	4.06	7.09	14.01
Mali	0.09	0.12	0.24	0.45	0.71	1.02	1.61	2.47	3.31	4.11	4.90	5.70	8.48	14.87
Malta	0.11	0.19	0.56	1.21	2.70	5.03	7.40	9.81	18.58	33.62	48.19	61.62	80.88	111.38
Marshall Islands	0.01	0.02	0.04	0.09	0.21	0.41	0.76	1.26	2.06	3.19	4.33	5.44	12.60	29.57
Mauritania	0.03	0.04	0.08	0.14	0.20	0.28	0.50	0.85	1.37	2.03	2.67	3.34	5.68	10.99
Mauritius	0.03	0.04	0.07	0.12	0.21	0.34	0.58	0.90	1.47	2.26	2.99	3.70	6.39	12.92
Mexico	0.11	0.16	0.39	0.80	1.88	3.62	5.50	7.52	12.77	21.30	29.62	37.98	68.85	144.24
Micronesia (Federated States of)	0.01	0.02	0.04	0.08	0.21	0.43	0.78	1.30	2.07	3.02	3.88	4.62	10.51	24.93
Monaco	0.11	0.19	0.55	1.19	2.75	5.19	7.66	10.46	18.56	31.63	44.88	56.63	77.44	110.41
Mongolia	0.05	0.07	0.20	0.44	1.04	2.00	2.93	3.77	5.78	8.94	12.06	15.41	25.20	43.48
Montenegro	0.05	0.08	0.24	0.54	1.39	2.79	3.89	4.68	7.95	13.46	18.49	23.48	35.72	60.19
Morocco	0.02	0.02	0.05	0.09	0.17	0.27	0.41	0.61	1.29	2.45	3.52	4.40	6.99	13.51

Mozambique	0.02	0.03	0.07	0.13	0.27	0.48	0.85	1.37	2.36	3.78	5.06	6.19	10.68	20.97
Myanmar	0.03	0.04	0.07	0.13	0.25	0.43	0.75	1.19	2.13	3.54	4.92	6.28	10.27	19.19
Namibia	0.07	0.11	0.28	0.56	1.21	2.21	4.02	6.48	10.24	15.31	20.23	24.72	29.55	37.59
Nauru	0.01	0.02	0.04	0.08	0.21	0.41	0.73	1.15	1.75	2.40	3.23	4.17	13.55	29.52
Nepal	0.02	0.02	0.03	0.05	0.08	0.13	0.23	0.36	0.72	1.28	1.91	2.50	4.59	9.15
Netherlands	0.18	0.30	0.88	1.91	4.26	7.93	11.20	14.10	23.35	38.96	54.25	68.73	98.20	157.53
New Zealand	2.76	4.82	14.26	31.02	77.14	152.26	253.40	382.24	664.09	1093.28	1521.04	1959.90	2842.72	4885.00
Nicaragua	0.09	0.14	0.34	0.70	1.62	3.12	4.59	5.97	9.09	13.92	18.65	23.16	29.05	39.09
Niger	0.03	0.04	0.07	0.12	0.18	0.25	0.42	0.72	1.16	1.70	2.31	2.87	5.09	10.33
Nigeria	0.03	0.04	0.07	0.11	0.17	0.24	0.38	0.58	0.98	1.58	2.28	2.84	5.45	11.29
Niue	0.02	0.02	0.04	0.07	0.18	0.36	0.68	1.15	1.87	2.75	3.52	4.37	10.59	24.95
North Macedonia	0.05	0.08	0.25	0.56	1.45	2.95	4.13	4.98	9.21	16.67	23.88	31.06	59.04	115.87
Northern Mariana Islands	0.02	0.02	0.04	0.08	0.18	0.52	0.69	1.64	2.14	3.60	4.42	5.84	14.05	36.86
Norway	0.14	0.22	0.61	1.31	2.74	4.91	7.71	11.09	18.51	30.00	41.27	51.63	80.76	149.46
Oman	0.03	0.04	0.10	0.20	0.38	0.64	1.00	1.43	2.71	4.77	7.16	9.46	18.70	37.08
Pakistan	0.02	0.03	0.04	0.08	0.12	0.19	0.32	0.49	0.84	1.38	1.94	2.45	4.70	9.93
Palau	0.02	0.02	0.05	0.12	0.33	0.66	1.17	1.85	2.73	3.75	4.80	5.72	14.62	37.01
Palestine	0.03	0.04	0.09	0.17	0.33	0.55	0.78	1.03	1.91	3.47	4.94	6.26	9.96	17.27
Panama	0.08	0.12	0.29	0.59	1.37	2.62	3.96	5.38	8.67	13.86	18.99	23.81	33.24	54.19
Papua New Guinea	0.01	0.02	0.04	0.08	0.19	0.37	0.66	1.04	1.65	2.49	3.22	3.98	8.37	18.18
Paraguay	0.02	0.03	0.06	0.11	0.22	0.38	0.61	0.91	2.29	4.75	7.13	9.38	19.01	44.71
Peru	0.05	0.08	0.17	0.32	0.73	1.39	2.17	3.07	5.37	9.06	12.76	16.41	25.72	47.92
Philippines	0.04	0.05	0.09	0.16	0.29	0.47	0.81	1.30	2.13	3.31	4.41	5.45	8.10	14.43
Poland	0.05	0.07	0.19	0.41	0.96	1.86	2.75	3.60	6.59	11.57	16.28	20.42	43.99	102.91
Portugal	0.11	0.17	0.52	1.16	3.45	7.37	10.99	14.24	30.27	59.00	86.53	113.10	161.86	257.55

Puerto Rico	0.06	0.08	0.20	0.39	0.88	1.68	2.58	3.57	5.41	8.11	10.73	13.33	24.69	54.42
Qatar	0.03	0.03	0.06	0.12	0.20	0.32	0.52	0.82	1.85	3.58	5.27	6.58	13.60	29.18
Republic of Korea	0.04	0.04	0.07	0.12	0.23	0.39	0.56	0.74	1.66	3.31	4.94	6.46	20.52	60.90
Republic of Moldova	0.05	0.07	0.19	0.41	1.05	2.13	3.14	3.95	6.78	11.68	16.45	21.11	27.33	37.30
Romania	0.05	0.07	0.22	0.50	1.48	3.15	5.34	7.85	12.53	19.66	26.67	33.27	49.75	85.73
Russian Federation	0.05	0.08	0.20	0.41	0.94	1.79	2.78	3.81	6.85	11.80	16.54	20.36	37.85	80.67
Rwanda	0.02	0.03	0.07	0.13	0.26	0.45	0.79	1.26	2.14	3.44	4.58	5.71	10.65	21.53
Saint Kitts and Nevis	0.06	0.09	0.20	0.41	0.91	1.71	2.93	4.49	7.21	11.41	15.50	19.37	34.98	63.41
Saint Lucia	0.05	0.08	0.19	0.37	0.77	1.38	2.09	2.85	4.15	5.96	7.90	9.38	17.35	35.98
Saint Vincent and the Grenadines	0.06	0.09	0.20	0.39	0.88	1.68	2.56	3.52	5.54	8.63	11.78	14.64	28.45	59.61
Samoa	0.01	0.02	0.04	0.08	0.19	0.37	0.71	1.17	2.01	3.17	4.31	5.37	11.85	27.68
San Marino	0.11	0.18	0.55	1.22	2.82	5.34	7.60	9.83	17.74	30.84	43.32	54.34	74.66	117.14
Sao Tome and Principe	0.03	0.04	0.07	0.12	0.19	0.29	0.49	0.81	1.23	1.73	2.20	2.64	3.98	6.74
Saudi Arabia	0.02	0.03	0.06	0.12	0.23	0.37	0.55	0.76	1.54	2.94	4.40	5.76	8.22	13.76
Senegal	0.03	0.05	0.09	0.16	0.24	0.32	0.57	0.99	1.54	2.20	2.88	3.47	5.90	11.31
Serbia	0.04	0.07	0.20	0.44	1.21	2.51	3.89	5.25	9.61	16.98	24.19	31.18	52.82	97.51
Seychelles	0.03	0.04	0.08	0.15	0.29	0.48	0.79	1.21	1.94	2.98	3.94	4.59	8.13	16.82
Sierra Leone	0.03	0.04	0.07	0.13	0.19	0.27	0.46	0.76	1.25	1.89	2.50	3.06	5.20	10.08
Singapore	0.06	0.08	0.14	0.25	0.46	0.74	1.05	1.36	2.71	5.16	7.51	9.65	18.20	41.41
Slovakia	0.05	0.09	0.27	0.60	1.50	2.98	4.27	5.27	9.34	16.35	22.77	28.40	41.75	71.51
Slovenia	0.06	0.10	0.33	0.74	2.08	4.34	6.07	7.10	15.74	31.75	46.34	59.69	76.16	102.24
Solomon Islands	0.01	0.02	0.05	0.11	0.27	0.54	0.93	1.46	2.13	2.92	3.67	4.46	10.95	25.96

Somalia	0.02	0.03	0.07	0.12	0.24	0.42	0.70	1.07	1.77	2.75	3.70	4.51	8.32	16.72
South Africa	0.18	0.29	0.76	1.58	3.23	5.62	10.36	17.27	26.20	37.08	47.60	56.27	65.83	84.44
South Sudan	0.03	0.03	0.07	0.14	0.29	0.52	0.89	1.43	2.37	3.71	5.00	6.38	10.93	21.41
Spain	0.10	0.17	0.49	1.09	2.48	4.68	6.89	9.00	15.95	27.66	38.85	49.35	77.06	141.24
Sri Lanka	0.02	0.03	0.05	0.09	0.18	0.34	0.69	1.23	2.41	4.21	5.92	7.57	12.73	24.19
Sudan	0.02	0.03	0.07	0.15	0.29	0.49	0.74	1.05	1.87	3.23	4.58	5.90	9.33	16.71
Suriname	0.05	0.08	0.18	0.36	0.78	1.42	2.09	2.78	4.08	5.95	7.79	9.66	16.22	32.50
Sweden	0.15	0.23	0.65	1.40	2.91	5.17	7.90	11.11	18.26	29.25	40.08	50.68	66.62	98.77
Switzerland	0.14	0.24	0.71	1.56	3.59	6.79	10.14	13.62	24.46	42.16	59.65	76.12	106.36	165.46
Syrian Arab Republic	0.02	0.03	0.07	0.15	0.29	0.48	0.71	0.99	1.66	2.69	3.71	4.75	7.20	12.09
Taiwan (Province of China)	0.02	0.03	0.06	0.12	0.26	0.46	0.75	1.12	2.02	3.43	4.81	6.10	11.94	27.83
Tajikistan	0.05	0.07	0.21	0.47	1.12	2.17	3.03	3.69	6.28	10.79	15.50	20.19	32.01	59.26
Thailand	0.03	0.04	0.08	0.16	0.31	0.53	0.84	1.22	2.11	3.48	4.82	6.14	11.29	24.59
Timor-Leste	0.03	0.04	0.07	0.12	0.24	0.42	0.75	1.21	2.09	3.42	4.79	6.33	10.67	19.41
Togo	0.03	0.04	0.07	0.12	0.19	0.26	0.48	0.82	1.29	1.90	2.27	2.82	4.99	9.38
Tokelau	0.01	0.02	0.04	0.08	0.16	0.36	0.60	0.95	1.81	2.53	3.80	4.13	10.79	28.12
Tonga	0.02	0.02	0.09	0.23	0.48	0.89	1.68	2.82	4.33	6.21	8.07	9.90	24.96	60.29
Trinidad and Tobago	0.04	0.05	0.12	0.23	0.52	0.98	1.40	1.78	2.71	4.19	5.66	7.00	10.17	17.31
Tunisia	0.03	0.04	0.09	0.20	0.37	0.62	0.89	1.19	2.13	3.69	5.19	6.66	10.36	17.67
Turkey	0.05	0.07	0.17	0.35	0.68	1.16	1.76	2.47	4.45	7.57	10.97	13.59	25.33	53.12
Turkmenistan	0.05	0.09	0.25	0.53	1.21	2.30	3.44	4.51	6.87	10.52	14.18	17.80	23.74	32.10
Tuvalu	0.01	0.02	0.04	0.07	0.18	0.35	0.63	1.01	1.63	2.50	3.33	4.21	10.25	25.29
Uganda	0.04	0.06	0.13	0.26	0.55	1.01	1.69	2.60	3.68	4.92	6.15	7.36	12.67	25.30
Ukraine	0.06	0.09	0.25	0.53	1.21	2.29	3.47	4.65	7.15	10.91	14.47	17.59	25.63	42.24
United Arab	0.03	0.04	0.11	0.20	0.38	0.60	1.09	1.79	3.30	5.65	7.45	9.17	16.02	32.11

Emirates														
United Kingdom	0.14	0.22	0.61	1.32	2.84	5.16	7.90	11.06	19.05	31.75	44.19	56.18	85.57	149.64
United Republic of Tanzania	0.02	0.03	0.07	0.13	0.26	0.47	0.83	1.34	2.27	3.58	4.82	5.98	10.58	21.03
United States of America	2.48	4.48	11.74	24.25	61.15	122.52	235.38	398.47	777.61	1365.25	1948.31	2494.75	2967.19	3485.95
United States Virgin Islands	0.06	0.08	0.20	0.39	0.85	1.55	2.30	3.07	4.56	6.84	9.12	11.15	18.45	34.96
Uruguay	0.14	0.23	0.60	1.27	2.61	4.63	6.72	8.83	16.05	28.41	40.80	53.24	84.74	160.97
Uzbekistan	0.05	0.07	0.21	0.47	1.12	2.18	3.15	4.00	6.85	11.69	16.36	20.81	33.04	58.93
Vanuatu	0.01	0.02	0.04	0.08	0.19	0.37	0.71	1.22	1.99	3.00	4.01	5.05	12.01	27.10
Venezuela (Bolivarian Republic of)	0.09	0.13	0.34	0.71	1.83	3.71	5.86	8.17	14.06	23.48	32.96	42.07	65.63	123.34
Viet Nam	0.02	0.03	0.06	0.11	0.22	0.38	0.68	1.11	2.07	3.51	4.87	6.07	9.76	17.97
Yemen	0.02	0.03	0.07	0.15	0.28	0.47	0.70	0.98	1.76	3.07	4.36	5.61	9.17	16.06
Zambia	0.02	0.03	0.07	0.13	0.27	0.48	0.87	1.41	2.36	3.74	5.07	6.42	11.49	22.48
Zimbabwe	0.05	0.07	0.15	0.30	0.62	1.10	1.98	3.14	5.00	7.60	10.13	12.60	17.66	27.72

Table S7. DALYs of Non-melanoma skin cancer by Age Group in Countries Around the World in 2019

Country	DALYs													
	20-24 years	25-29 years	30-34 years	35-39 years	40-44 years	45-49 years	50-54 years	55-59 years	60-64 years	65-69 years	70-74 years	75-79 years	80-84 years	85+ years
Afghanistan	1.22	1.67	2.63	4.61	7.93	11.16	16.31	19.91	31.00	42.04	49.75	65.10	83.11	112.11
Albania	4.64	4.47	5.95	8.57	10.32	14.32	17.15	25.17	41.94	64.53	100.27	134.96	204.45	281.91
Algeria	1.32	1.66	2.31	3.58	5.47	7.55	11.06	14.67	26.05	37.56	46.11	59.44	75.39	155.26
American Samoa	2.40	1.67	2.32	5.02	20.36	19.88	47.90	35.33	50.34	70.91	68.38	67.74	156.36	333.73
Andorra	1.76	2.81	4.64	6.39	9.77	11.62	17.43	23.89	39.86	51.43	66.50	92.73	138.18	285.86
Angola	1.06	1.42	2.57	4.28	7.67	11.46	18.58	26.10	39.17	48.39	60.52	75.55	102.91	139.35
Antigua and Barbuda	1.74	4.02	4.88	6.52	10.01	12.68	23.98	35.27	52.60	62.75	81.72	116.35	184.90	284.91
Argentina	2.06	2.89	3.84	7.07	11.74	15.91	23.10	32.51	50.30	60.82	69.74	98.68	131.78	223.17
Armenia	2.88	3.10	5.47	5.30	15.94	12.22	19.08	29.53	44.61	50.28	87.05	124.61	167.35	243.44
Australia	1.89	4.63	6.72	10.21	17.01	27.89	45.09	75.93	104.52	158.02	218.13	289.86	404.22	649.90
Austria	1.11	1.13	1.99	3.87	6.77	9.40	12.91	18.88	27.29	36.29	44.16	62.39	91.70	211.45
Azerbaijan	3.48	3.78	6.84	9.36	15.90	16.38	26.53	35.98	41.68	47.10	57.19	66.50	99.53	118.76
Bahamas	1.87	4.89	7.44	9.45	14.87	16.24	25.31	30.77	39.43	50.18	57.82	73.67	100.25	160.86
Bahrain	1.01	1.12	1.56	2.51	4.09	6.49	11.14	13.43	21.79	36.18	45.73	69.26	93.06	140.14
Bangladesh	0.97	1.28	1.89	2.89	4.27	5.94	9.72	12.91	21.24	29.20	37.22	48.42	61.38	77.33
Barbados	1.20	1.88	2.69	3.75	6.13	6.69	11.28	15.88	23.75	31.30	41.33	58.10	74.58	136.16
Belarus	2.81	4.08	6.86	11.23	14.02	23.23	29.84	43.60	58.62	68.49	82.30	98.74	137.40	217.52
Belgium	1.62	1.90	3.29	4.59	8.32	10.10	15.49	23.28	44.76	51.55	53.24	66.93	87.33	161.58
Belize	2.82	6.77	9.47	10.48	17.38	20.65	34.20	42.79	53.50	65.28	77.81	101.01	142.80	229.17
Benin	1.29	1.88	10.67	5.17	5.02	5.99	9.42	14.68	24.68	31.70	35.97	43.36	51.67	63.63
Bermuda	1.17	2.35	3.27	4.52	8.47	12.08	20.29	26.96	36.40	50.62	64.72	92.26	139.07	236.11
Bhutan	0.75	0.83	1.28	2.17	3.43	4.85	7.65	10.83	19.47	26.53	40.13	62.72	77.08	87.32
Bolivia (Plurinational)	4.19	3.94	4.87	9.49	14.42	20.86	33.52	48.24	70.71	101.13	124.65	180.21	297.55	501.66

State of)														
Bosnia and Herzegovina	7.09	4.61	6.29	11.29	13.82	15.73	17.68	23.43	41.10	59.15	75.54	128.62	211.71	448.03
Botswana	1.37	2.24	4.85	6.61	10.46	16.32	24.67	34.15	41.33	59.98	85.11	102.79	118.28	164.59
Brazil	3.07	4.44	6.25	10.16	16.65	23.17	33.68	44.25	67.79	80.24	104.65	142.06	184.48	311.30
Brunei Darussalam	1.45	2.13	2.61	4.46	6.35	8.10	11.23	14.88	25.57	36.52	53.32	77.08	132.46	247.34
Bulgaria	2.07	1.96	6.30	11.31	16.45	23.09	34.60	35.63	49.57	53.17	70.56	108.25	193.62	348.05
Burkina Faso	1.23	1.80	10.15	5.18	5.30	6.01	9.14	14.48	23.81	28.83	34.90	42.79	50.37	59.53
Burundi	1.08	1.35	2.25	3.74	6.68	9.61	15.32	21.82	34.70	44.78	56.46	76.06	103.06	128.66
Cabo Verde	0.98	0.92	4.47	2.03	2.76	4.29	7.54	12.88	25.48	31.25	35.03	38.72	50.40	90.47
Cambodia	3.67	3.84	4.34	10.35	11.46	20.92	32.06	45.63	66.77	82.15	104.90	115.25	125.14	158.89
Cameroon	1.53	2.25	13.23	6.56	6.57	7.52	11.19	17.54	29.62	35.40	41.57	49.28	57.57	69.42
Canada	1.04	2.43	4.02	6.68	13.13	26.26	54.56	110.37	201.58	337.39	457.41	574.07	725.66	1032.27
Central African Republic	0.84	0.97	1.70	3.20	6.70	11.44	19.23	27.69	38.49	46.64	55.66	65.17	79.31	101.56
Chad	1.35	1.90	10.87	5.08	5.35	6.15	10.20	16.37	28.72	36.16	41.95	47.19	54.44	60.50
Chile	1.53	2.18	3.96	4.87	7.48	13.08	16.46	27.08	41.88	61.43	73.29	132.59	214.77	476.77
China	3.33	4.08	5.67	8.46	13.58	14.18	20.39	28.22	55.15	73.25	98.33	101.08	131.19	185.16
Colombia	3.26	5.11	6.49	9.36	11.03	17.42	22.98	34.43	47.97	64.20	90.16	135.92	184.18	289.69
Comoros	1.16	1.56	2.76	4.46	7.64	10.28	16.16	22.16	33.94	43.86	58.09	80.56	115.13	157.38
Congo	0.97	1.40	2.54	4.49	8.19	12.17	19.26	26.74	37.79	50.14	63.42	82.66	105.80	164.32
Cook Islands	1.23	1.28	2.19	3.79	9.86	9.67	20.99	16.47	24.96	37.31	37.52	40.24	76.88	169.76
Costa Rica	1.49	3.60	4.31	4.76	5.50	11.19	13.89	27.11	41.60	58.57	86.59	132.98	215.00	411.24
Croatia	0.72	1.48	1.75	2.61	4.58	7.32	15.20	19.22	29.22	44.13	55.64	108.74	222.17	431.36
Cuba	2.78	6.00	9.37	12.61	23.92	25.09	49.71	71.41	93.79	132.88	164.25	234.44	329.40	560.69
Cyprus	0.85	1.60	1.84	2.73	4.29	5.73	11.39	15.51	28.89	50.19	60.95	99.94	166.97	355.51
Czechia	1.28	1.66	2.37	3.63	5.60	8.32	15.26	19.33	27.26	38.54	55.14	88.07	144.70	258.76

Côte d'Ivoire	1.45	2.08	12.50	5.54	5.71	6.66	9.84	15.32	26.38	32.53	37.52	45.88	55.29	65.73
Democratic People's Republic of Korea	3.97	5.22	6.91	9.65	15.77	19.66	27.44	37.20	66.26	79.51	90.88	84.54	94.80	108.15
Democratic Republic of the Congo	0.89	1.18	2.23	3.63	6.60	9.91	16.29	22.67	33.48	41.75	51.26	62.77	84.01	117.39
Denmark	1.06	0.90	2.46	2.90	4.34	6.92	12.05	16.37	26.19	36.48	45.43	79.68	114.26	221.37
Djibouti	1.14	1.56	2.74	4.59	8.56	12.68	20.42	29.84	45.19	56.99	77.25	102.42	139.02	174.99
Dominica	1.57	3.55	4.72	6.30	9.39	10.68	18.47	24.57	33.07	46.65	56.80	77.66	111.09	173.60
Dominican Republic	5.64	13.11	17.79	21.80	36.51	44.53	67.26	81.39	114.90	130.44	152.60	171.12	189.40	319.51
Ecuador	5.19	4.07	5.36	10.72	13.48	16.71	22.90	34.88	46.66	63.06	81.19	109.98	220.18	576.49
Egypt	0.64	0.75	1.02	1.37	2.26	3.86	7.28	10.22	17.06	21.46	23.53	27.16	32.45	44.30
El Salvador	1.27	1.83	3.01	7.09	9.67	15.22	19.32	24.85	32.25	43.46	60.44	92.03	111.65	152.34
Equatorial Guinea	0.96	1.33	2.32	3.76	6.48	9.66	15.04	21.13	30.84	43.63	55.97	78.82	113.05	165.93
Eritrea	1.09	1.46	2.43	4.35	7.90	11.43	17.26	23.78	33.43	41.82	52.16	69.75	90.46	129.01
Estonia	0.61	0.84	2.46	7.47	5.67	15.66	12.98	30.08	44.81	47.08	59.45	82.31	138.53	289.59
Eswatini	1.27	1.81	3.61	5.03	8.40	13.53	21.80	33.97	40.25	54.81	73.15	92.70	110.62	156.10
Ethiopia	0.98	1.27	2.15	3.40	5.91	8.55	14.31	20.69	33.03	45.08	64.09	89.99	124.56	156.23
Fiji	1.25	1.08	1.88	3.49	11.86	9.87	22.52	20.47	27.25	36.46	45.51	41.08	83.38	208.75
Finland	0.70	1.25	1.90	2.92	3.77	5.20	8.23	12.35	20.60	27.04	36.03	55.92	83.66	149.80
France	1.21	1.64	2.56	4.09	6.60	7.43	10.78	15.57	30.69	37.66	45.87	59.83	94.46	208.95
Gabon	1.13	1.50	2.72	4.53	7.99	12.00	19.05	27.00	40.56	54.47	64.54	79.57	102.38	156.76
Gambia	1.63	2.15	12.10	5.87	5.88	6.77	10.94	17.47	29.21	36.09	41.64	46.89	54.31	73.54
Georgia	3.18	4.47	5.14	11.29	20.34	19.48	35.79	42.61	61.78	71.31	139.66	168.69	226.89	201.16
Germany	1.02	1.44	1.90	3.03	4.44	6.42	9.53	13.43	22.29	27.63	35.21	46.46	71.42	140.88
Ghana	2.98	3.54	18.14	8.59	7.17	6.64	9.54	14.80	25.09	29.89	34.83	38.93	48.47	55.79

Greece	1.20	2.56	4.22	6.91	9.39	11.48	17.20	22.33	31.47	35.94	47.47	75.06	115.82	236.59
Greenland	0.77	1.22	2.51	5.08	11.15	22.86	45.17	86.51	162.77	264.82	367.03	421.15	509.68	679.58
Grenada	1.17	2.40	4.71	6.27	9.71	13.37	20.47	30.69	46.48	65.37	72.43	86.46	96.06	104.23
Guam	1.32	1.07	1.78	4.18	11.40	10.44	31.02	20.64	29.32	39.04	31.41	29.76	71.35	156.90
Guatemala	6.63	8.96	11.56	17.97	22.04	31.63	41.57	55.83	76.40	88.48	115.50	175.13	256.53	465.17
Guinea	1.48	2.18	12.48	5.93	6.06	6.78	10.95	17.08	29.14	35.38	40.48	46.19	54.59	62.37
Guinea-Bissau	1.44	1.95	10.92	6.50	6.70	7.86	12.05	19.36	30.40	36.82	39.81	43.58	48.55	60.73
Guyana	2.13	5.21	7.77	9.65	16.55	18.61	29.57	35.80	44.71	54.15	62.82	75.27	94.36	147.81
Haiti	1.68	3.55	5.00	6.81	13.76	16.81	28.64	36.10	48.74	61.68	76.40	102.85	138.19	192.83
Honduras	0.71	1.40	3.03	7.99	9.97	15.96	22.38	39.18	47.91	70.84	72.85	106.04	98.95	112.01
Hungary	1.51	2.11	3.85	6.72	9.50	17.50	28.07	37.02	48.03	61.69	78.81	118.61	166.55	312.97
Iceland	0.61	0.73	1.25	2.17	3.51	4.84	7.69	10.59	18.95	23.93	30.55	40.54	53.11	81.80
India	0.79	0.95	1.66	2.92	4.24	5.69	8.70	11.73	19.65	25.73	35.76	49.26	57.71	67.43
Indonesia	3.70	3.72	4.13	8.98	10.26	18.61	28.13	40.07	62.61	78.88	100.17	109.97	122.84	162.32
Iran (Islamic Republic of)	1.72	1.91	2.51	3.81	5.58	7.39	11.24	15.04	25.92	36.45	45.40	63.10	80.09	112.65
Iraq	2.23	1.90	2.96	4.78	7.58	10.64	15.35	16.25	25.68	36.76	41.02	53.58	64.54	90.36
Ireland	2.44	4.07	4.63	7.02	9.41	11.32	19.20	27.22	45.41	67.41	88.93	136.20	215.38	328.43
Israel	2.05	1.37	3.28	5.26	6.73	8.03	16.19	25.67	46.79	62.75	75.03	116.22	168.65	391.81
Italy	1.30	1.53	2.87	4.03	5.48	7.10	10.87	15.42	24.53	31.88	43.13	62.51	94.40	182.60
Jamaica	0.64	1.46	4.74	5.17	7.08	9.24	14.19	18.34	22.57	31.03	40.78	46.83	55.45	80.39
Japan	0.67	0.82	1.38	2.46	4.03	4.95	8.41	10.96	18.85	23.00	28.57	35.63	47.68	97.53
Jordan	0.86	3.47	3.68	5.15	7.16	9.48	15.60	21.62	27.93	37.44	40.55	58.87	69.89	114.01
Kazakhstan	1.66	2.73	4.98	7.45	12.47	12.79	20.98	34.37	42.84	58.71	73.39	94.60	125.92	158.26
Kenya	1.12	1.43	2.45	4.14	7.10	10.48	16.72	23.82	37.10	48.49	64.44	87.46	118.97	162.57
Kiribati	1.09	1.03	2.54	4.45	12.32	7.88	15.64	17.67	23.52	28.37	36.45	30.90	55.99	132.33
Kuwait	1.02	0.97	1.47	1.96	3.78	5.36	8.48	11.69	23.40	33.35	44.89	49.74	65.43	90.58

Kyrgyzstan	2.02	1.13	7.29	8.62	17.44	14.90	29.67	47.20	61.63	79.39	102.71	132.56	195.79	208.12
Lao People's Democratic Republic	3.58	3.86	4.54	10.35	11.04	18.75	27.31	37.50	56.83	67.39	84.46	88.84	95.95	117.85
Latvia	1.56	1.01	2.97	10.15	8.09	19.49	24.10	40.05	52.82	65.29	97.69	115.70	164.65	367.09
Lebanon	1.47	1.72	2.24	3.23	4.97	6.93	10.60	14.33	23.92	35.88	44.28	54.86	65.09	99.39
Lesotho	1.33	1.85	3.66	5.26	9.23	16.54	27.27	42.41	49.63	66.05	90.66	110.40	120.72	168.73
Liberia	1.30	1.89	10.72	5.27	5.30	6.29	9.40	14.60	24.99	30.07	34.67	42.24	54.94	73.32
Libya	1.20	1.58	2.50	4.12	6.62	9.68	14.03	18.41	29.63	43.88	51.61	71.91	78.76	104.70
Lithuania	0.69	1.85	3.66	6.13	7.03	13.74	17.25	33.06	43.90	48.00	60.35	83.25	117.09	199.02
Luxembourg	1.18	1.62	2.46	3.44	5.13	6.39	9.87	13.92	23.65	30.79	40.08	57.34	84.40	169.42
Madagascar	1.08	1.48	2.37	3.83	6.69	9.22	13.92	20.13	29.78	37.81	47.86	62.44	87.60	119.99
Malawi	1.23	1.52	2.51	4.04	7.20	10.56	16.61	23.29	35.65	45.77	59.58	86.56	114.83	142.81
Malaysia	0.97	1.74	2.80	4.86	6.50	12.40	20.51	29.18	36.78	55.35	67.17	79.19	95.07	135.72
Maldives	0.92	1.31	2.07	3.08	4.44	6.76	9.42	12.50	20.02	27.76	35.90	46.93	73.02	100.80
Mali	1.29	1.89	11.39	5.55	5.55	6.26	10.03	15.83	26.34	32.67	38.55	43.84	53.05	68.22
Malta	1.36	1.92	2.81	3.95	5.63	6.83	9.91	14.34	24.64	32.39	41.61	58.25	87.93	155.26
Marshall Islands	2.25	1.92	4.00	7.51	27.77	20.21	39.68	40.05	44.25	62.70	76.14	66.73	147.55	333.73
Mauritania	1.42	2.18	12.99	5.46	5.29	6.03	9.33	14.31	23.86	30.54	36.20	45.20	57.80	80.30
Mauritius	2.75	2.58	2.38	4.10	3.12	5.61	9.40	13.98	22.86	25.46	38.35	36.26	48.67	72.34
Mexico	2.51	4.01	6.17	9.49	13.61	20.97	28.00	40.54	52.82	71.85	89.60	136.12	194.52	355.80
Micronesia (Federated States of)	2.37	1.85	3.70	6.38	22.59	20.29	44.82	42.92	49.76	66.15	82.91	65.76	138.18	367.05
Monaco	1.30	1.97	3.50	4.13	5.18	5.80	8.14	10.98	18.55	23.35	29.52	40.14	58.50	108.75
Mongolia	0.84	0.95	1.77	4.46	5.10	6.18	16.81	14.88	28.93	36.43	36.77	43.32	73.82	121.72
Montenegro	1.32	1.54	2.60	3.66	5.08	8.03	12.97	17.64	24.53	32.26	45.04	65.61	102.73	175.13
Morocco	0.87	0.98	1.44	2.50	4.50	7.22	11.33	15.51	26.05	38.62	48.88	60.67	84.43	124.66

Mozambique	1.21	1.55	2.72	4.67	8.50	12.37	19.78	29.26	44.17	56.41	70.04	96.74	122.50	159.82
Myanmar	4.01	4.10	4.53	10.19	9.94	17.07	25.14	33.37	48.31	57.52	72.62	79.46	91.18	111.06
Namibia	1.10	1.62	3.37	4.63	7.26	11.90	20.20	30.73	37.58	53.22	81.76	104.50	126.99	172.59
Nauru	2.42	1.92	3.92	7.60	28.14	21.88	46.49	41.62	48.49	58.55	81.38	66.04	196.07	328.08
Nepal	0.69	0.71	1.08	2.01	3.36	4.90	8.45	11.89	21.34	28.95	42.76	61.80	72.82	87.84
Netherlands	0.77	0.98	1.57	2.38	4.10	5.74	8.82	12.68	21.38	29.01	39.56	52.45	73.43	148.12
New Zealand	0.80	1.51	3.38	4.64	11.74	23.52	38.33	57.01	95.72	152.12	227.43	338.71	503.37	806.68
Nicaragua	2.53	3.38	4.02	7.72	11.15	14.17	22.81	39.25	50.37	77.75	112.27	136.96	163.88	256.17
Niger	1.15	1.73	10.39	4.73	4.64	5.06	8.24	13.47	23.53	29.25	35.30	43.29	53.83	68.21
Nigeria	1.05	1.58	9.29	4.49	4.23	4.93	7.37	11.45	19.36	26.64	35.10	46.08	58.65	80.36
Niue	2.15	1.53	2.76	5.28	19.75	16.60	39.35	34.26	48.31	62.92	69.94	61.31	131.91	297.90
North Macedonia	1.44	0.97	3.38	6.39	10.97	16.28	20.75	27.65	40.01	52.97	88.67	167.46	278.05	499.21
Northern Mariana Islands	1.58	1.20	2.33	4.86	16.31	21.09	35.83	35.37	45.12	74.82	68.12	70.52	148.17	369.48
Norway	0.83	1.12	1.66	2.77	3.60	5.48	8.49	14.89	24.26	30.91	39.28	57.03	84.35	183.15
Oman	1.84	1.47	2.36	4.07	7.31	11.65	15.81	27.42	40.40	61.28	75.81	108.66	154.24	292.27
Pakistan	0.99	1.17	1.96	3.44	5.27	6.75	10.69	13.70	23.78	30.16	45.19	61.56	68.26	74.78
Palau	3.08	2.30	4.35	8.83	38.49	29.31	63.66	51.86	55.20	71.59	93.99	67.34	170.70	484.11
Palestine	3.23	5.10	4.45	6.03	10.18	13.86	14.53	20.21	31.87	52.20	53.32	82.49	90.73	124.47
Panama	1.93	3.96	5.68	6.37	6.77	10.25	11.28	20.69	28.55	37.13	47.12	58.09	82.04	134.25
Papua New Guinea	1.53	1.05	2.15	4.36	17.52	13.82	32.82	29.03	39.00	55.20	58.90	53.32	111.37	217.59
Paraguay	1.68	3.56	6.35	11.36	13.07	19.98	27.03	30.36	53.11	64.60	102.49	142.15	187.51	321.69
Peru	4.35	4.87	5.10	7.84	10.69	14.83	23.45	28.65	37.37	50.77	63.36	90.89	125.92	211.64
Philippines	3.94	4.54	5.33	10.19	10.30	16.93	21.40	29.52	42.21	51.22	57.50	62.23	68.37	87.73
Poland	0.87	1.35	2.12	3.79	5.39	8.73	13.53	19.20	28.72	39.49	57.52	94.36	164.83	368.31
Portugal	2.46	1.58	3.95	4.72	10.19	15.27	22.14	28.03	38.11	44.47	58.26	85.24	129.82	308.42

Puerto Rico	0.95	2.18	2.50	5.16	10.85	18.30	25.75	30.65	39.79	46.69	58.63	75.83	121.31	230.71
Qatar	0.85	1.05	1.64	2.80	3.09	4.91	8.52	10.89	18.99	32.82	51.66	72.88	156.14	280.77
Republic of Korea	0.83	1.24	1.75	2.87	3.94	4.95	7.69	10.17	18.20	23.52	31.79	46.03	77.15	213.62
Republic of Moldova	1.13	4.65	6.57	9.60	10.73	23.25	24.86	36.54	51.92	66.52	78.44	99.12	105.50	151.01
Romania	3.12	4.92	6.93	10.04	16.59	29.91	51.82	62.32	74.78	81.93	104.30	146.17	213.51	326.40
Russian Federation	2.56	4.30	6.90	11.64	13.25	19.61	25.69	36.82	50.22	56.82	72.76	93.01	129.63	203.19
Rwanda	1.21	1.52	2.62	4.13	6.94	9.90	16.38	24.37	36.60	49.43	62.15	86.37	119.12	160.84
Saint Kitts and Nevis	1.88	3.97	5.67	7.92	16.28	25.62	48.89	68.07	94.37	123.82	148.98	195.00	240.47	291.38
Saint Lucia	1.04	2.60	3.90	4.57	8.45	10.07	14.86	18.20	23.87	29.99	38.97	49.71	68.39	139.00
Saint Vincent and the Grenadines	2.35	5.81	7.64	10.35	18.99	26.10	40.04	46.16	51.99	69.54	86.35	127.76	182.43	309.49
Samoa	1.89	1.59	3.18	6.32	23.16	18.66	41.75	36.88	49.34	69.36	76.95	68.30	133.36	325.68
San Marino	1.24	1.77	3.14	4.55	5.90	7.36	10.57	14.17	23.70	30.28	39.58	55.73	86.16	187.03
Sao Tome and Principe	0.90	0.80	2.14	1.97	2.87	5.07	8.46	13.77	22.54	27.04	29.92	30.36	35.38	44.05
Saudi Arabia	1.06	1.16	2.04	2.99	4.59	6.84	9.10	11.80	19.93	28.47	36.88	47.15	57.56	90.00
Senegal	1.70	2.38	13.12	5.79	5.76	6.69	10.40	16.76	28.66	35.07	40.89	48.82	60.26	74.84
Serbia	1.35	2.37	3.23	4.37	8.15	14.39	29.07	40.28	50.84	71.14	98.56	161.81	311.57	601.30
Seychelles	1.41	2.42	3.63	4.62	8.50	13.36	18.25	23.71	32.55	41.80	42.50	55.44	62.67	85.69
Sierra Leone	1.26	1.96	11.78	5.51	5.57	6.50	10.22	15.69	27.29	34.40	37.44	43.09	51.77	63.85
Singapore	0.64	0.71	1.01	1.72	2.98	4.03	6.17	8.58	15.33	20.01	26.36	33.29	48.43	79.15
Slovakia	1.00	0.97	2.72	3.50	4.37	6.99	11.46	17.13	25.57	33.01	52.57	72.51	136.45	263.69
Slovenia	0.72	1.56	3.88	4.28	3.68	5.25	9.53	12.33	21.95	30.29	44.42	82.07	138.77	260.45
Solomon Islands	2.60	2.03	4.60	8.64	32.78	25.46	55.19	50.39	55.37	73.26	85.58	71.69	140.07	284.17

Somalia	0.85	1.05	1.86	3.39	6.84	10.10	16.38	22.78	32.64	40.27	50.34	63.74	81.75	107.29
South Africa	1.09	2.03	4.34	5.51	8.26	13.13	23.06	37.45	44.93	62.27	87.47	106.20	138.02	222.45
South Sudan	0.79	1.05	1.81	3.10	5.29	7.82	13.13	19.43	30.34	41.11	54.39	77.34	106.32	134.32
Spain	0.88	1.71	2.74	3.82	6.21	8.12	12.04	17.01	26.10	33.80	42.75	67.10	105.88	234.10
Sri Lanka	2.46	3.03	4.10	9.40	13.29	23.21	35.60	43.52	63.83	76.66	96.44	107.99	126.06	158.16
Sudan	1.20	1.46	2.05	3.03	5.02	7.31	11.61	15.40	27.58	39.79	50.13	64.78	83.01	100.50
Suriname	1.34	3.41	4.29	5.83	9.31	10.26	16.97	21.97	27.49	36.13	41.90	58.73	76.07	116.95
Sweden	1.62	2.56	4.81	4.68	7.00	7.94	10.84	14.35	23.86	29.74	38.28	52.88	66.95	121.20
Switzerland	1.28	1.10	2.05	2.77	4.00	6.85	11.43	14.96	24.61	31.92	44.15	74.32	104.01	221.23
Syrian Arab Republic	0.77	0.86	1.10	1.58	2.73	4.31	7.23	9.85	17.48	23.84	28.63	35.08	44.73	66.40
Taiwan (Province of China)	0.69	1.27	2.10	3.97	7.15	10.11	11.31	14.93	22.18	28.24	37.11	51.31	69.17	128.77
Tajikistan	0.84	0.94	4.15	4.02	15.96	11.32	11.90	16.63	29.53	56.54	71.37	100.54	170.76	193.81
Thailand	2.32	5.29	6.53	9.71	11.68	16.48	20.74	23.56	33.11	41.46	47.99	69.57	92.39	156.49
Timor-Leste	3.70	3.80	4.41	9.18	10.17	18.37	29.01	41.10	60.13	74.00	93.03	104.33	119.63	144.46
Togo	1.42	1.92	11.10	5.61	5.89	7.09	11.04	17.81	28.27	33.48	33.61	40.93	48.39	58.46
Tokelau	2.06	1.91	3.38	6.06	22.95	15.20	29.36	31.59	38.09	47.92	63.59	52.56	122.97	311.01
Tonga	3.04	1.95	5.71	11.93	60.08	40.74	93.78	95.54	99.69	139.52	184.25	145.52	346.58	895.99
Trinidad and Tobago	0.75	1.59	4.23	4.64	7.50	14.66	16.44	15.99	22.31	25.40	30.02	45.12	63.72	72.36
Tunisia	1.22	1.68	2.42	3.47	5.20	7.05	10.29	13.65	22.96	34.10	41.79	54.37	69.49	94.11
Turkey	2.68	3.57	2.95	4.87	7.44	10.73	16.68	21.07	28.72	39.13	59.43	86.63	126.36	247.22
Turkmenistan	7.75	7.63	11.07	14.20	21.81	20.25	27.26	35.91	40.12	38.56	54.90	50.81	66.87	52.80
Tuvalu	2.43	1.98	3.70	7.08	25.24	19.16	40.02	36.56	43.48	58.87	72.79	61.23	135.44	347.28
Uganda	1.08	1.38	2.25	3.58	6.27	8.80	14.47	19.99	30.33	39.45	51.48	73.38	102.86	126.47
Ukraine	4.86	6.45	8.85	15.97	19.70	27.93	35.90	46.91	53.87	60.77	73.97	85.01	93.76	120.30
United Arab	2.10	3.46	5.62	6.78	9.68	13.26	19.83	22.65	35.66	52.03	55.50	71.28	82.95	120.44

Emirates														
United Kingdom	1.35	2.40	3.93	4.96	6.84	8.97	14.75	20.91	30.44	42.09	55.64	82.81	125.95	232.15
United Republic of Tanzania	1.19	1.63	2.83	4.47	7.80	10.76	17.53	25.84	42.29	53.40	67.71	92.20	123.06	156.28
United States of America	1.03	1.49	2.70	4.85	9.85	19.76	37.50	59.41	92.42	130.50	164.99	204.56	241.15	292.40
United States Virgin Islands	0.72	1.62	2.60	4.04	8.19	11.60	19.25	25.02	33.02	43.00	51.14	66.72	90.04	140.17
Uruguay	1.64	1.77	5.34	5.47	10.33	11.57	18.85	20.18	26.75	36.67	41.03	79.65	98.88	189.92
Uzbekistan	2.33	3.17	5.46	8.49	12.83	12.34	19.61	32.62	39.41	44.97	77.59	111.92	160.67	211.49
Vanuatu	2.06	1.64	3.39	6.53	23.91	18.64	40.14	35.92	47.50	65.26	72.42	65.80	140.28	299.52
Venezuela (Bolivarian Republic of)	6.18	7.10	9.01	14.69	20.54	34.68	46.94	68.63	87.20	121.73	165.65	238.44	309.92	442.22
Viet Nam	3.43	3.77	4.54	9.18	11.40	19.42	28.83	40.02	56.94	71.00	90.26	96.63	110.70	148.88
Yemen	0.84	1.22	1.96	3.36	6.11	8.92	13.59	17.65	30.33	42.65	51.33	63.74	77.77	96.43
Zambia	1.45	1.92	3.15	5.29	9.50	13.73	20.91	29.11	42.05	53.69	64.21	82.41	114.52	158.96
Zimbabwe	1.20	1.85	4.03	5.71	9.38	15.05	24.26	36.72	44.99	60.42	85.73	107.76	119.75	170.14

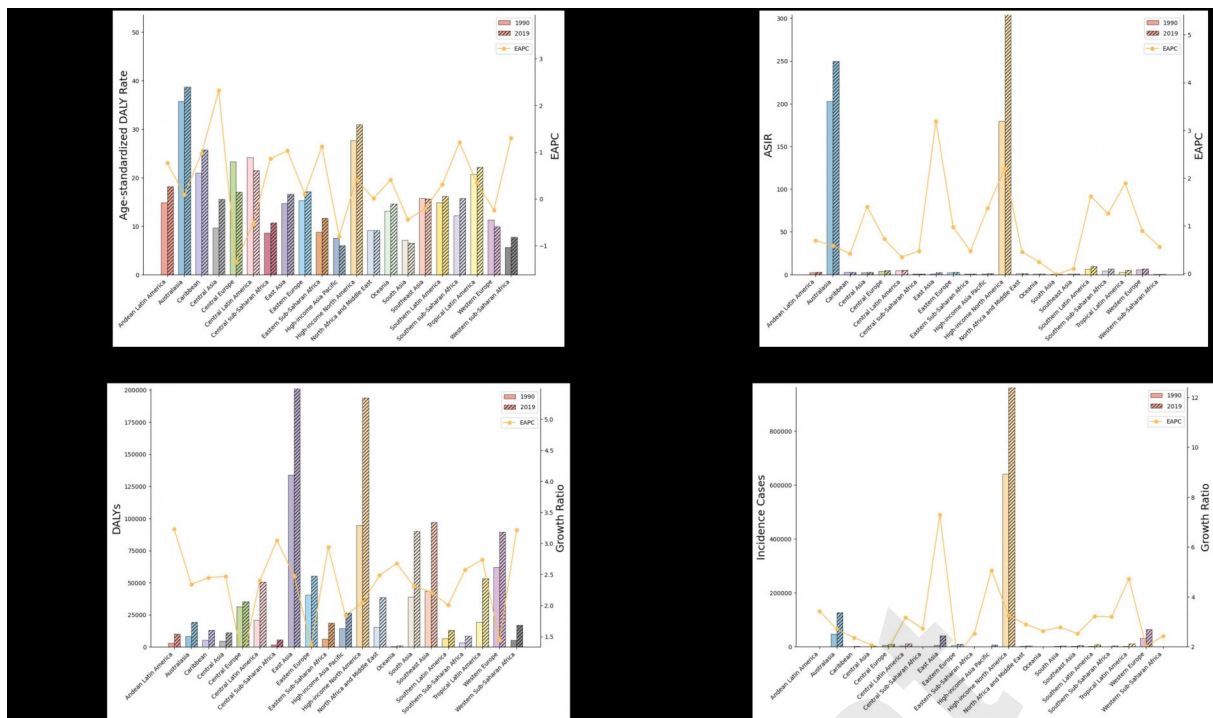


Fig S1. ASIR and Age-standardized DALY Rate of Non-melanoma skin cancer in Different Regions of the World in 1990 and 2019 with EAPC from 1990 to 2019

Preprint

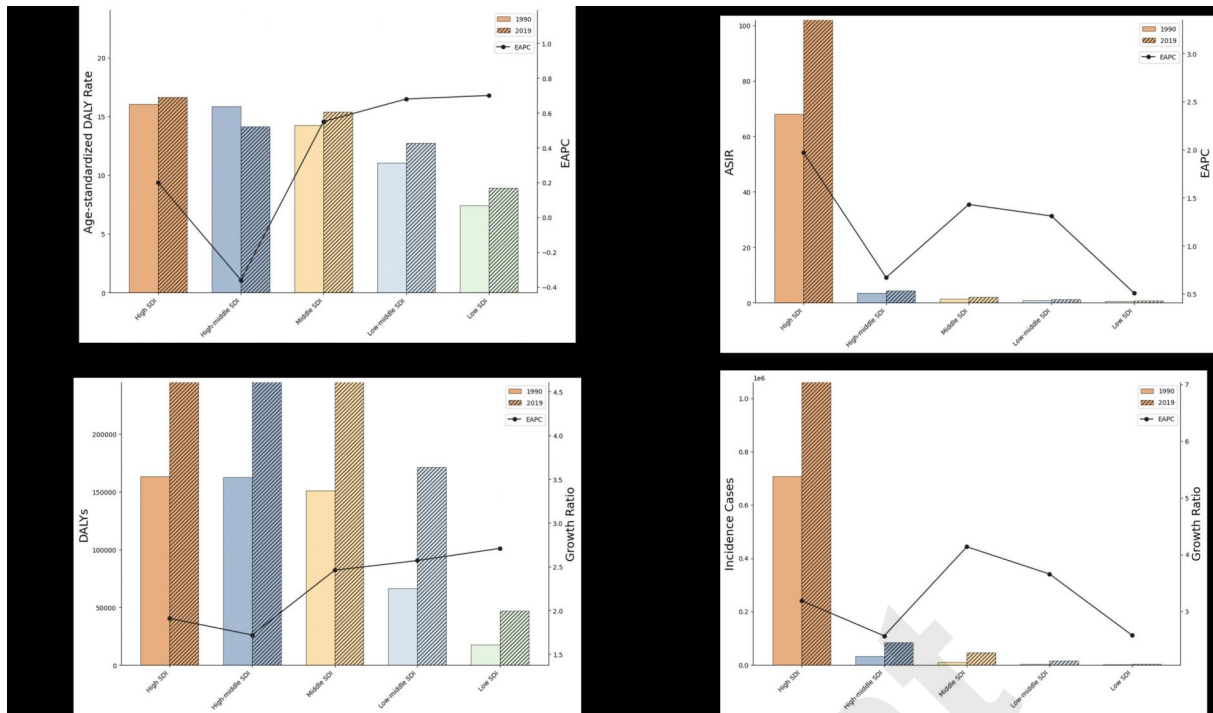


Fig S2. ASIR and Age-standardized DALY Rate of Non-melanoma skin cancer in Countries with Different SDI Levels in 1990 and 2019 with EAPC from 1990 to 2019

Preprint

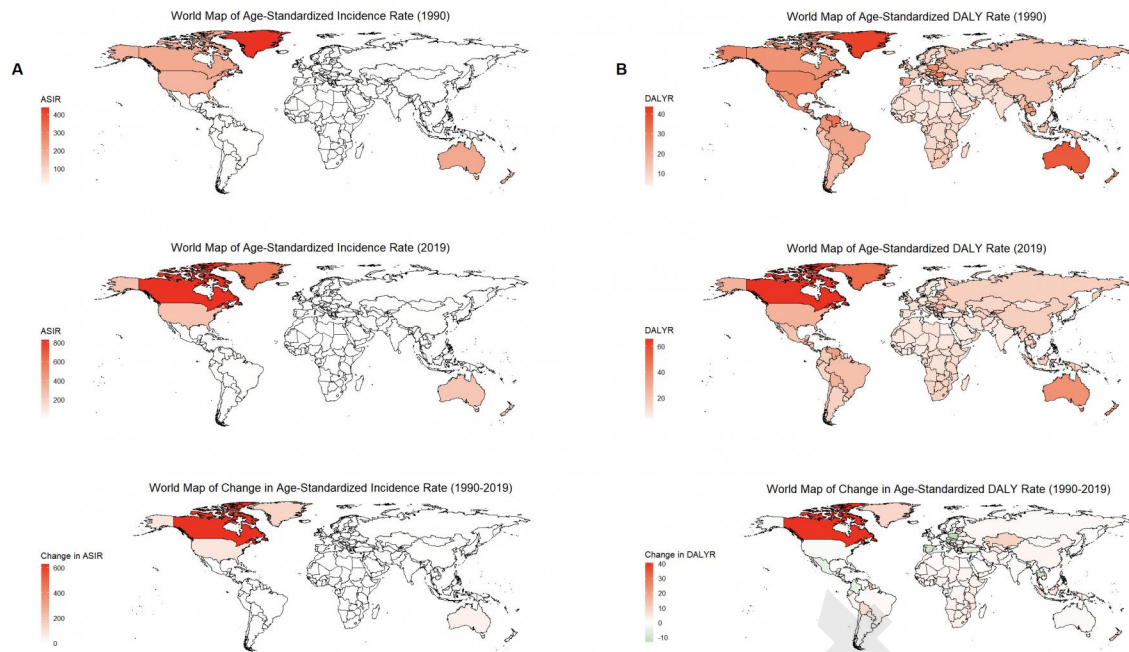


Fig S3. Global distribution of Age-Standardized Incidence Rate and Age-Standardized DALYs Rate of Non-melanoma skin cancer and changes: (A) Age-Standardized Incidence Rate (B) Age-Standardized DALYs Rate

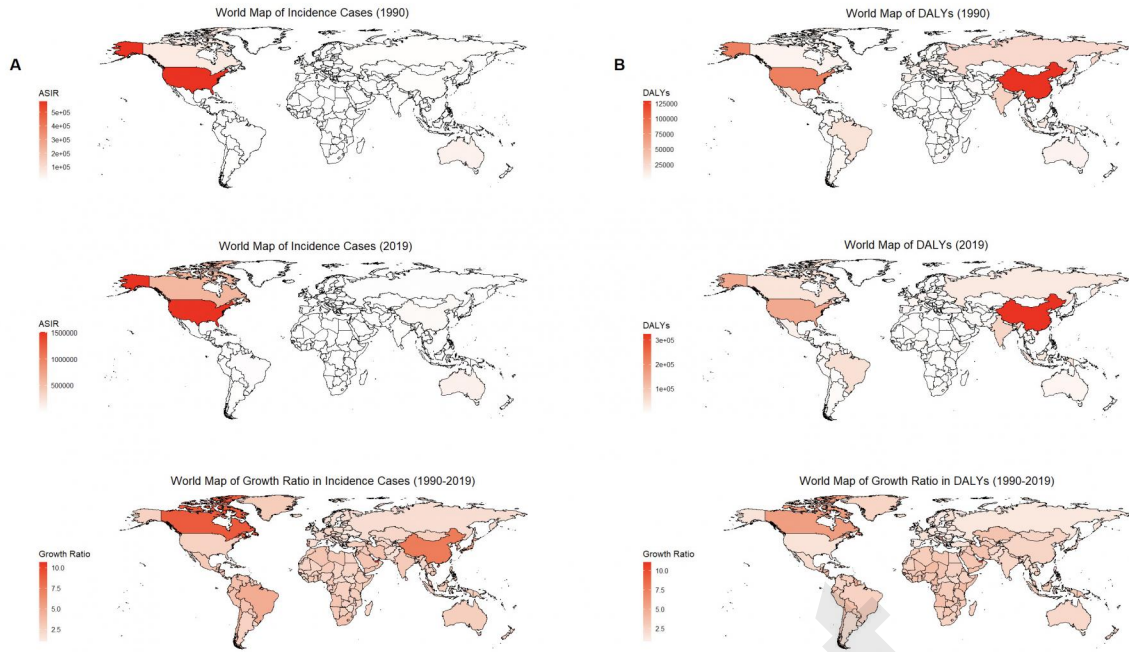


Fig S4. Global distribution of Incidence Cases and DALYs of Non-melanoma skin cancer and growth ratio: (A) Incidence Cases (B) DALYs

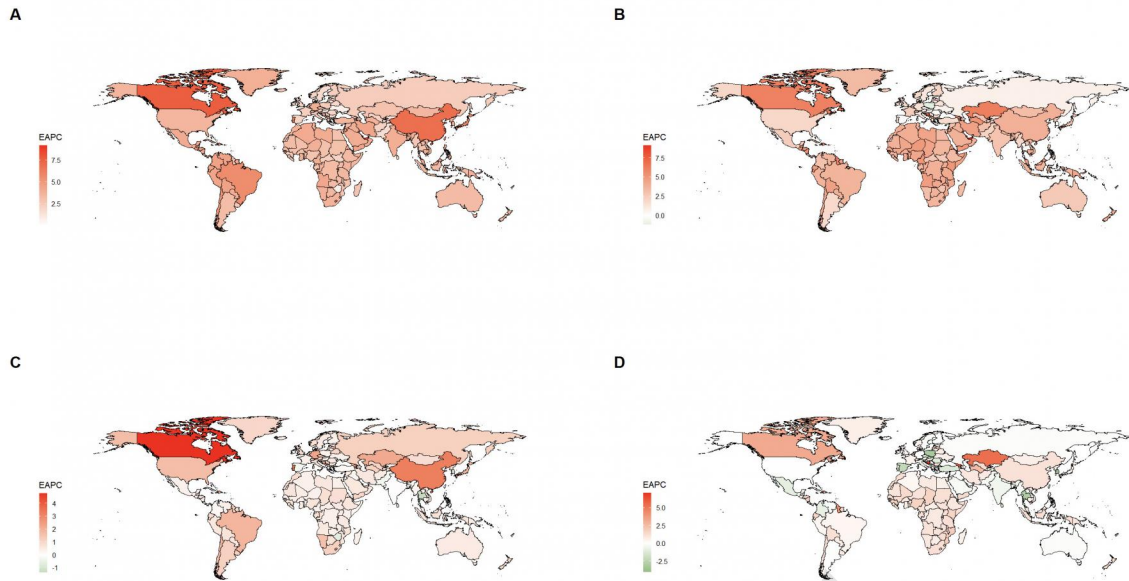


Fig S5. EAPC of Disease Burden Metrics of non-melanoma skin cancer in Countries Around the World: (A) Incidence Cases (B) DALYs (C) ASIR (D) Age-Standardized DALYs Rate

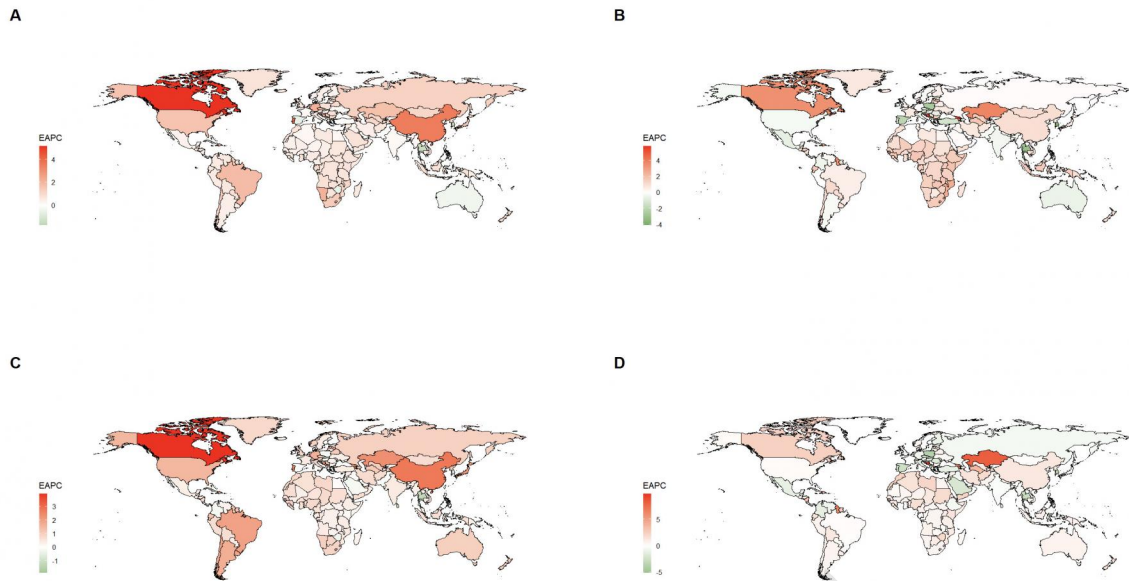


Fig S6. EAPC of Disease Burden Metrics of non-melanoma skin cancer by Gender in Countries Around the World: (A) ASIR of Male (B) Age-Standardized DALYs Rate of Male (C) ASIR of Female (D) Age-Standardized DALYs Rate of Female

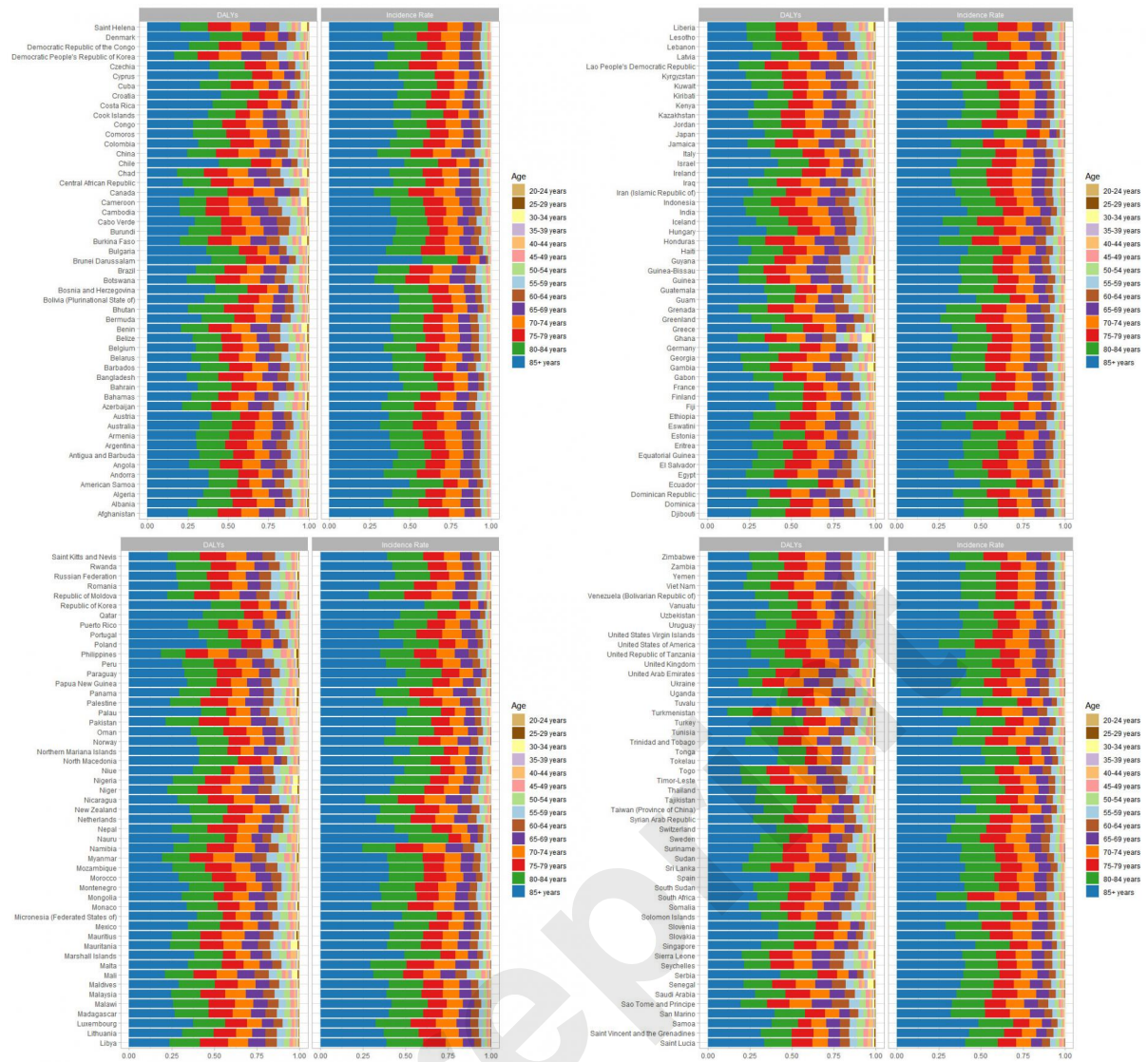


Fig S7. DALYs and Incidence Rate of Non-melanoma skin cancer by Country and Age Group in 2019