

# Assessing the impact of a wheat flour and baker's yeast restricted diet vs. calorie restriction in non-alcoholic fatty liver disease patients

Enver Ciftel<sup>1</sup>, Aleksandra Klisic<sup>2,3</sup>, Serpil Ciftel<sup>4</sup>, Jelena Kotur Stevuljevic<sup>5</sup>, Gokhan Tonkaz<sup>6</sup>, Ramazan Dayanan<sup>7</sup>, Arzu Bilen<sup>8</sup>, Habib Bilen<sup>8</sup>, Ilyas Capoglu<sup>8</sup>, Filiz Mercantepe<sup>9\*</sup>

<sup>1</sup>Department of Endocrinology and Metabolism, Sivas Numune Hospital, Sivas, Turkey

<sup>2</sup>University of Montenegro-Faculty of Medicine, Podgorica, Montenegro

<sup>3</sup>Center for Laboratory Diagnostics, Primary Health Care Center, Podgorica, Montenegro

<sup>4</sup>Department of Endocrinology and Metabolism, Faculty of Medicine, Erzurum Regional Education and Research Hospital, Erzurum, Turkey

<sup>5</sup>Department of Medical Biochemistry, University of Belgrade-Faculty of Pharmacy, Belgrade, Serbia

<sup>6</sup>Department of Radiology, Faculty of Medicine, Giresun Regional Education and Research Hospital, Giresun, Turkey

<sup>7</sup>Department of Endocrinology and Metabolism, Batman Training and Research Hospital, Batman, Turkey

<sup>8</sup>Department of Endocrinology and Metabolism, Faculty of Medicine, Ataturk University, Erzurum, Turkey

<sup>9</sup>Department of Endocrinology and Metabolism, Faculty of Medicine, Recep Tayyip Erdogan University, Rize, Turkey

## \*Corresponding author:

Filiz Mercantepe  
Department of Endocrinology  
and Metabolism  
Recep Tayyip  
Erdogan University  
Rize, Turkey  
E-mail: filizmercantepe@  
hotmail.com

Submitted: 13 July 2024; Accepted: 14 September 2024

Online publication: 26 October 2024

Arch Med Sci 2025; 21 (3): 719–728

DOI: <https://doi.org/10.5114/aoms/193393>

Copyright © 2024 Termedia & Banach

## Abstract

**Introduction:** Non-alcoholic fatty liver disease (NAFLD) is a prevalent and nonalcoholic, progressive liver disorder associated with metabolic disturbance. This study aimed to compare the efficacy of a wheat flour or baker's yeast restricted diet with traditional calorie restriction in NAFLD patients.

**Material and methods:** The analysed data were obtained from 243 individuals with NAFLD, who completed the study. Of these patients, 54 belonged to Group (1) (standard diet, SD), 104 belonged to Group (2) (wheat flour-free diet, WFFD), and 85 belonged to Group (3) (yeast-free diet, YFD). The intervention period lasted 6 months, during which participants' dietary compliance was closely monitored. Anthropometric measurements, liver function tests, and imaging studies were conducted at baseline, after 3 months, and at the endpoint.

**Results:** At the end of the 6-month trial, both the WFFD and YFD groups exhibited a noteworthy reduction in body mass index (BMI) and triglyceride (TG) levels when compared to a standard diet that only involved calorie restriction. Furthermore, a notable reduction in the severity of liver steatosis was seen in these groups ( $p < 0.05$ ). The SD group did not exhibit any significant changes in these metrics. The WFFD group experienced a notable reduction in Hepatic Steatosis Index (HSI) values ( $p < 0.05$ ). Cluster analysis revealed that the obese group had higher HSI, weight, and BMI values throughout the study period, indicating a more advanced stage of NAFLD.

**Conclusions:** This study highlights the significance of food constituents and dietary strategies in the treatment of NAFLD. It suggests that limiting the intake of wheat flour and baker's yeast specifically could have positive effects on liver well-being. Nevertheless, it is imperative to conduct comprehensive and enduring investigations that consider the genetic and metabolic variations among individuals. The results of this study provide evidence that customised dietary approaches designed to meet people's specific nutritional requirements could be crucial in the treatment of NAFLD.

**Key words:** baker's yeast, calorie restriction, diets, non-alcoholic fatty liver disease, wheat flour.

## Introduction

Non-alcoholic fatty liver disease (NAFLD) is a complex worldwide health issue encompassing a range of liver illnesses characterised by the abnormal buildup of fat in the liver, unrelated to alcohol consumption [1–3]. NAFLD encompasses a range of liver disorders, starting with the buildup of fat in the liver (steatosis) and progressing to non-alcoholic steatohepatitis (NASH), which can ultimately lead to cirrhosis and hepatocellular carcinoma [4, 5]. Steatohepatitis is a multifaceted disorder characterised by the buildup of fat in the liver along with inflammation. Its development is typically attributed to a 2-step process [6]. During the initial phase, the liver experiences an increase in fat buildup due to insulin resistance and de novo lipogenesis. During the second stage, the occurrence of oxidative stress and endoplasmic reticulum stress leads to the production of proinflammatory cytokines, resulting in inflammation and damage to hepatocytes. This process can result in the activation of immune cells and the development of fibrosis, ultimately leading to the progression of liver damage [2]. Hepatic lipidosis, also known as fatty metamorphosis, is defined by the accumulation of fat in the liver. Numerous factors, including alcohol consumption, metabolic syndrome, type 2 diabetes, malnutrition, some medications and toxins, rapid weight loss, and genetic/metabolic disorders, can contribute to this condition [7, 8]. The interaction of these factors determines the severity and progression of the disease [3, 9]. Hence, ongoing research is being conducted on various approaches for the management and treatment of NAFLD [10, 11]. There is growing evidence suggesting that dietary behaviours may significantly influence the development and progression of NAFLD [12–16]. In this situation, it has become more and more important to study how certain nutrients and eating habits can speed up or slow down the progression of NAFLD, as well as how they can affect the development and treatment of the disease. The overconsumption of foods that are high in calories but low in nutrients, such as those containing high amounts of sugar and refined carbohydrates, has been linked to the development of NAFLD [17]. Wheat flour bread, a dietary staple in numerous societies, has refined carbohydrates that can induce fast variations in blood glucose levels [18]. These carbohydrates can result in rapid elevations in blood sugar levels and the subsequent development of insulin resistance, which is a significant factor contributing to NAFLD [19].

The yeast *Saccharomyces cerevisiae* undergoes fermentation of the simple sugars in the dough, leading to the production of carbon dioxide (CO<sub>2</sub>), which causes the dough to rise. Additionally, other

fermentation byproducts contribute to the maturation and development of scent in the dough [20]. Baker's yeast, which is frequently utilised in bread production, comprises constituents, including mannose oligosaccharides, that have the potential to modify the composition of the gut microbiota [20, 21]. When the gut microbiome is out of balance, this is called dysbiosis, and it may make NAFLD worse by causing inflammation and metabolic problems [22, 23]. Baker's yeast, a crucial component in the process of bread manufacturing, has purine molecules that can be converted into uric acid during metabolism. Elevated levels of uric acid have been linked to insulin resistance and could potentially contribute to the development of NAFLD [24].

This study aims to evaluate the clinical impact of 3 different dietary approaches (a diet restricted in wheat flour, yeast, and calorie restriction) on developing and treating NAFLD. It will examine the effects of these dietary strategies on the fatty liver and explore the potential of nutritionally based approaches to managing the disease. In this context, the discoveries may provide significant progress in the development of improved and personalised dietary approaches for the management of NAFLD patients.

## Material and methods

### Participants and study design

This study was conducted to evaluate the effects of different dietary strategies in patients diagnosed with NAFLD. The study had a prospective, randomised, controlled design. The research was conducted on adult individuals who applied to the Ataturk University University Endocrinology and Metabolism outpatient clinic and were diagnosed with NAFLD. Those < 18 years old, with other chronic liver diseases, who consumed alcohol (> 30 g/day for men, > 20 g/day for women), who were pregnant, breastfeeding, or those who had difficulty complying with special dietary restrictions were excluded from the study.

The study, with a statistical power of 88%, a type 1 error rate of 0.04, and an effect size of 0.5, required a minimum sample size of 54 for each of the 3 groups. Those with other chronic liver diseases, those who consumed alcohol (> 30 g/day for men, > 20 g/day for women), and those who were pregnant or breastfeeding were excluded from the study. The study comprised a total of 450 patients diagnosed with NAFLD, who were listed sequentially, with each patient assigned a number from 1 to 450. Subsequently, they were allocated into three groups by a random selection process, with each group consisting of 150 patients. The randomisation process was conducted in the fol-

lowing manner: patient number 1 was allocated to Group 1, patient number 2 was allocated to Group 2, patient number 3 was allocated to Group 3, patient number 4 was allocated to Group 1, patient number 5 was allocated to Group 2, etc. Thus, patient 450 was allocated to group 3. Regrettably, due to the overlap of our study with the COVID-19 pandemic period and some patients having difficulty complying with special dietary restrictions, a total of 96 patients from the first group, 46 patients from the second group, and 65 patients from the third group were unable to complete the study. The CONSORT flow diagram is given in Figure 1.

Patients were divided randomly into 3 intervention groups.

Group (1) (standard diet, SD,  $n = 54$ ): This group was fed a generally recommended calorie restriction diet. There was no restriction on wheat flour and yeast, and there was no intervention in the daily nutritional composition of their food intake.

Group (2) (wheat flour-free diet, WFFD,  $n = 104$ ): This group followed a wheat flour-free diet, so they were obtained carbohydrates in their diet from legumes, vegetables, and fruits instead of wheat flour.

Group (3) (baker's yeast-free diet, YFD,  $n = 85$ ): This group adopted a baker's yeast-free diet. They consumed bread without yeast, just with wheat flour and water.

Each group followed a specific diet plan determined by the dietitian. Daily calorie intake and nutrient composition were determined to suit the individual's energy needs and medical condition. Daily calorie needs of patients were determined by the World Health Organisation (WHO), calculated according to the formula: for men:  $\text{weight (kg)} \times 24 \times 1 \text{ kcal}$ ; for women:  $\text{weight (kg)} \times 24 \times 0.95 \text{ kcal}$ . For obese individuals, the corrected weight formula was used. The diet duration was determined as 6 months. No additional physical exercise was recommended for all 3 groups other than walking 30 min/day,

150 min/week in total, 5 days a week, with no breaks for 2 consecutive days. The patients' diet and exercise compliance were evaluated based on their own statements.

## Measurements

### Biochemical analyses

Liver ultrasonography and biochemical analyses were performed on the participants 3 times in total, before starting the diet (month 0) and at the end of the third and sixth months. Biochemical analyses included serum alanine aminotransferase (ALT), aspartate aminotransferase (AST), lipid profile (total cholesterol (TC), triglyceride (TG), low-density lipoprotein-cholesterol (LDL-C), and high-density lipoprotein-cholesterol (HDL-C) levels.

### Hepatic Steatosis Index (HSI) and body mass index (BMI) measurements

Body mass index (BMI) was calculated for each participant. Each participant's height (in metres) and weight (in kilograms) were measured. These measurements were performed by trained personnel. BMI was calculated by dividing the participants' weight by the square of their height ( $\text{BMI} = \text{weight (kg)} / (\text{height (m)})^2$ ). The resulting BMI values were divided into standard categories:  $< 18.5 \text{ kg/m}^2$  (underweight),  $18.5\text{--}24.9 \text{ kg/m}^2$  (normal weight),  $25\text{--}29.9 \text{ kg/m}^2$  (overweight), and  $\geq 30 \text{ kg/m}^2$  (obese).

The hepatic steatosis index (HSI) was used to assess patients' NAFLD severity. Calculation of HSI was done with the following formula:  $\text{HSI} = 8 \times \text{ALT/AST ratio} + \text{BMI}$  (+2 if diabetic, +2 if female) [25].

### Fatty liver grade (FLG) evaluation

Evaluation of the NAFLD score was defined by liver ultrasonography. Ultrasonography has been used for objective assessment of hepatic fat accumulation and liver damage. All 3 ultrasonography

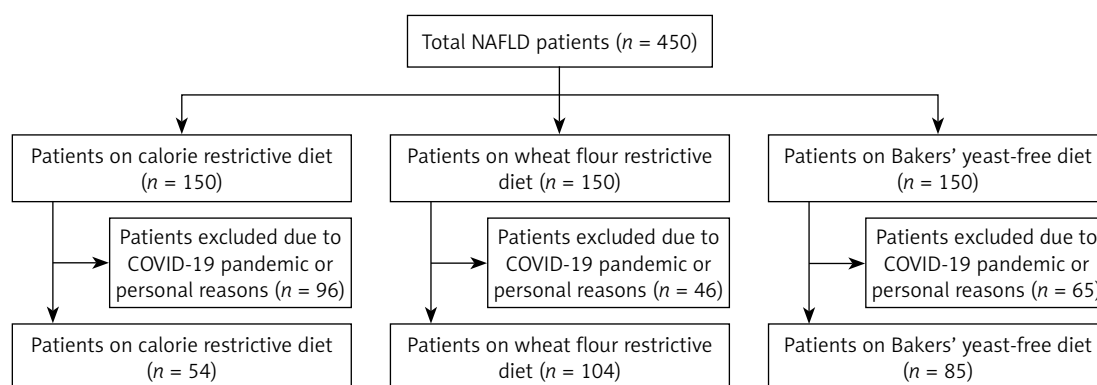


Figure 1. The CONSORT flow diagram of the study

measurements were made by the same radiologist, who was blinded to the study groups. Results were classified based on measured liver fat content. Representative ultrasound images of grading liver fat content are shown in Figure 2.

The grade system used for fatty liver is classified as follows [26]:

Grade 0: Normal liver appearance, no fat accumulation.

Grade 1: Mild fatty liver. Minimal fat accumulation in the liver tissue can be seen on ultrasound.

Grade 2: Moderate fatty liver. Significant fat accumulation in the liver tissue can be observed on ultrasound.

Grade 3: Severe fatty liver. Fat accumulation in liver tissue is evident and widespread. This stage usually refers to an advanced stage of fatty liver disease.

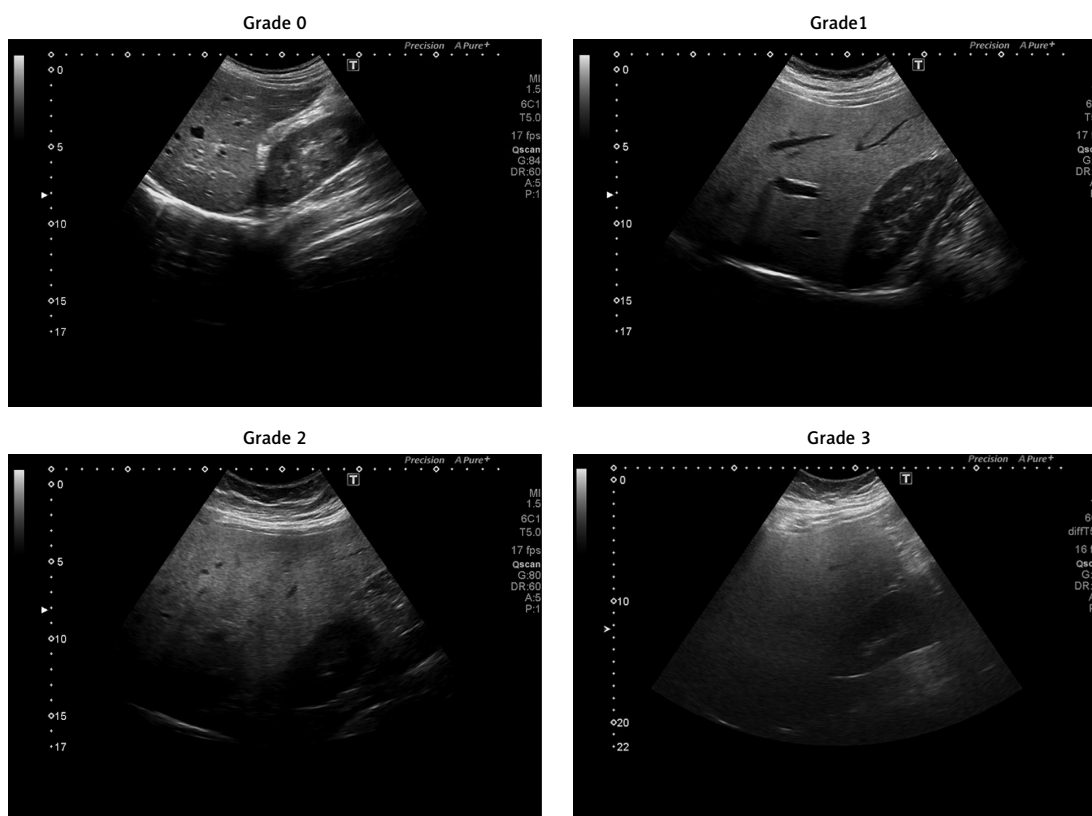
### Statistical analysis

Statistical analysis was performed using IBM SPSS version 24.0 (SPSS Corp., Chicago, Illinois, USA) software. The results were regarded statistically significant for  $p < 0.05$ . The data were presented as mean  $\pm$  standard deviation and median (interquartile range). The differences between groups were examined by Student's  $t$  test, Mann-Whitney  $U$  test, and Kruskal-Wallis ANOVA for continuous and  $\chi^2$  test for categorical variables.

Two step clusters analysis enabled grouping of patients in optimal number of clusters. This analysis included continuous so as categorical variables, using the model-based distance measure [27]. This model allows, albeit distance between the two clusters also decrease in log-likelihood by clusters combination estimation. The clusters were selected using a hierarchical clustering algorithm. The best cluster model was selected through the Bayesian information criterion (BIC), i.e. the lowest BIC characterised the best model [28].

### Results

A total of 243 patients (139 women and 104 men) were included in the study. There were 54 patients in the standard diet group (Group 1; SD), 104 patients in the wheat flour-free diet group (Group 2; WFFD), and 85 patients in the baker's yeast-free diet group (Group 3; YFD). The demographic results presented in Table I confirm that, at the beginning of the study, there were no differences between the subjects in the 3 diet regimes regarding general demographic (age, gender, diabetes mellitus (DM), and BMI) and biochemical (AST, ALT, and TG) data. Table II shows the data on BMI and biochemical markers at 3 study points, categorised by diet type. There was a statistically significant difference between the 3 diet groups



**Figure 2.** Representative ultrasound images of grading liver fat content

**Table I.** Demographic and biochemical data by diet group

Parameter	Standard diet (SD) (n = 54)	Wheat flour-free diet (WFFD) (n = 104)	Yeast-free diet (YFD) (n = 85)	P-value
Age [years]	37 (28–45)	35 (27–46)	34 (26–45)	0.601
Gender, female/male, n (%) <sup>#</sup>	27 (50)/27 (50)	57 (54.8)/47 (45.2)	55 (64.7)/30 (35.3)	0.188
Diabetes, yes/no, n (%) <sup>#</sup>	18(33.3)/36(66.7)	33(38.8)/52(61.2)	41(39.4)/63(60.6)	0.736
BMI [kg/m <sup>2</sup> ]	30.1 (27.0–36.2)	32.9 (29.1–38.2)	31.6 (29.3–35.4)	0.063
AST [U/l]	20.5 (17.0–32.0)	25.0 (19.0–32.0)	23.5 (17.0–32.5)	0.117
ALT [U/l]	24.0 (16.0–45.0)	31.0 (19.0–56.0)	28.0 (19.0–49.0)	0.307
TG [mg/dl]	183 (129–206)	147 (109–234)	186 (124–292)	0.169

P from Kruskal-Wallis test; <sup>#</sup> $\chi^2$  test. BMI – body mass index, AST – aspartate aminotransferase, ALT – alanine aminotransaminase, TG – triglyceride.

**Table II.** BMI and biochemical parameters in the three study points in subgroups defined by diet type

Parameter	Study period	Standard diet	WFFD	YFD	P-value
BMI [kg/m <sup>2</sup> ]	Baseline	30.1 (27.0–35.9)	33.0 (28.3–38.3) <sup>a</sup>	31.6 (29.3–35.4)	0.063
	3 months	29.4 (26.4–34.0)	32.4 (28.9–37.6) <sup>a</sup>	30.9 (28.1–35.1)	0.094
	6 months	29.4 (26.3–33.1)	31.9 (28.6–38.1) <sup>a</sup>	30.5 (28.0–34.7)	0.049
ALT [U/l]	Baseline	24.0 (16.5–43.0)	28.0 (18.5–51.5)	27.0 (19.0–44.0)	0.307
	3 months	25.0 (17.0–34.0)	23.0 (18.0–42.5)	24.0 (16.0–34.0)	0.796
	6 months	23.0 (17.0–34.0)	24.0 (19.5–34.0)	23.0 (18.0–36.0)	0.688
AST [U/l]	Baseline	20.0 (17.0–29.5)	24.0 (19.0–32.0)	24.0 (17.0–32.0)	0.117
	3 months	20.0 (16.0–25.5)	22.0 (18.0–28.5)	22.0 (18.0–28.0)	0.215
	6 months	20.0 (16.0–23.0)	21.0 (15.5–27.0)	21.0 (17.0–28.0)	0.601
TG [mg/dl]	Baseline	183 (131–203)	144 (108–212)	187 (125–292)	0.169
	3 months	164 (124–226)	155 (114–226)	156 (113–234)	0.641
	6 months	156 (105–238)	125 (98–171) <sup>a</sup>	164 (98–234)	0.046

P from Kruskal-Wallis test, <sup>a</sup>p < 0.05 vs. standard diet group by Mann-Whitney U test. BMI – body mass index, AST – aspartate aminotransferase, ALT – alanine aminotransaminase, TG – triglyceride.

solely for BMI and TG levels at month 6. This difference arises from the disparity between WFFD and the standard diet. Table III shows the percentage distribution of fatty liver degree among diet groups by month. None of the participants in the YFD group exhibited grade 3 hepatosteatos after 6 months. The rate of grade 3 hepatosteatos was 4.8% in the WFFD group and 7.4% in the SD group after 6 months. Table IV shows the changes in the

degree of fatty liver during the 6-month study period according to the different diets applied in NAFLD patients. While no difference was found in terms of fatty liver at 3 months in the pairwise comparisons between the diet groups, statistical significance was observed between the standard diet and both WFFD and YFD at 6 months. However, no statistical difference was found between the WFFD and YFD groups in terms of fatty liver

**Table III.** Comparison of fatty liver grade of the diet groups according to months

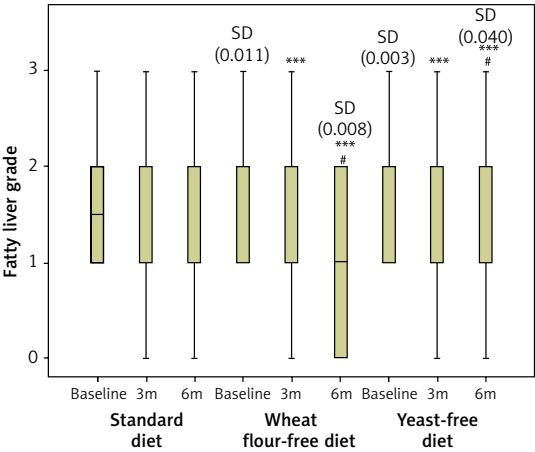
Diet types	Fatty liver grade	Baseline n (%)	Third month n (%)	Sixth month n (%)
Standard diet	Grade 0	0 (0)	3 (5.6)	4 (7.4)
	Grade 1	27 (50)	27 (50)	29 (53.7)
	Grade 2	22 (40.7)	22 (40.7)	17 (31.5)
	Grade 3	5 (9.3)	2 (3.7)	4 (7.4)
Wheat flour-free diet	Grade 0	0 (0)	9 (8.7)	21 (20.2)
	Grade 1	27 (26)	55 (52.9)	54 (51.9)
	Grade 2	58 (55.8)	35 (33.7)	24 (23.1)
	Grade 3	19 (18.3)	5 (4.8)	5 (4.8)
Yeast-free diet	Grade 0	0 (0)	11 (12.9)	26 (30.6)
	Grade 1	25 (29.4)	44 (51.8)	34 (40)
	Grade 2	44 (51.8)	23 (27.1)	25 (29.4)
	Grade 3	16 (18.8)	7 (8.2)	0 (0)



**Table IV.** Fatty liver grade changes during 6 months of study regarding different diets implemented in NAFLD patients

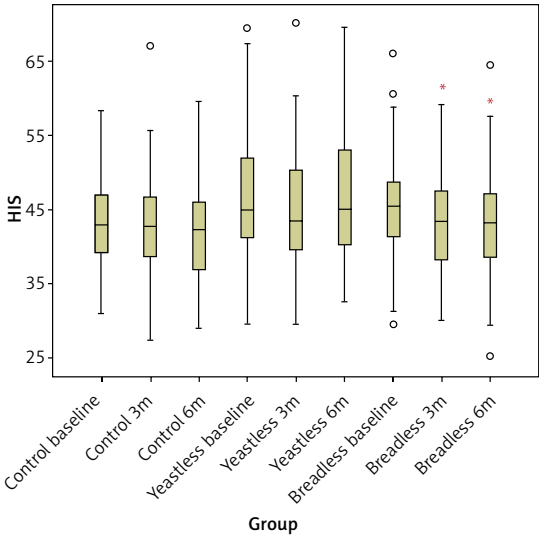
Period	SD	WFFD	YFD	P between groups
Baseline	1.5 (1.0–2.0)	2.0 (1.0–2.0)	2.0 (1.0–2.0)	SD vs. WFFD 0.011 SD vs. YFD 0.003 WFFD vs. YFD ns
Third month	1.0 (1.0–2.0)	1.0 (1.0–2.0)	1.0 (1.0–2.0)	SD vs. WFFD ns SD vs. YFD ns WFFD vs. YFD ns
Sixth month	1.0 (1.0–2.0)	1.0 (0.0–2.0)	1.0 (1.0–2.0)	SD vs. WFFD 0.008 SD vs. YFD 0.04 WFFD vs. YFD ns
P into groups	All ns	bl vs. 3m < 0.001 bl vs. 6m < 0.001 3m vs. 6m 0.022	bl vs. 3m < 0.001 bl vs. 6m < 0.001 3m vs. 6m 0.026	–

bl – baseline, 3m – 3 months, 6m – 6 months study periods; comparison within groups (by study periods) was performed by using Wilcoxon's paired test; comparison between groups in the same study period was performed using the Mann-Whitney U test.



**Figure 3.** Fatty liver grade changes during 6 months of study regarding different diets implemented in NAFLD patients. \*\*\* $P < 0.001$  vs. baseline in the same diet group; \* $P < 0.05$  vs. 3 months in the same diet group; SD ( $p$ -value) – significant difference vs. standard diet group at the same study time point. Lowering of FLG during 3 and 6 months of the study was significant only for the wheat flour-free diet and yeast-free diet groups, while the change in the standard diet group was not statistically significant. At the same time, baseline values in the WFFD group and YFD group were significantly higher compared to the SD group

degree at 6 months. When each diet group was compared in terms of the time points of the study, no difference was found between the baseline, third, and sixth months in the standard diet group. However, the WFFD and YFD groups showed differences in terms of the degree of liver steatosis both at third and sixth months when compared with the baseline time point. Similarly, there was a statistical difference between the third and sixth month time points in the WFFD and YFD groups. Figure 3 provides more detailed information on the FLG score change across the 3 study peri-



**Figure 4.** HSI value change throughout the study period and in 3 diet groups. \* $P < 0.05$  vs. wheat flour-free diet baseline

ods and 3 experimental groups. Lowering of FLG during 3 and 6 months of the study was significant only for the wheat flour-free diet and yeast-free diet groups, while the change in the standard diet group was not statistically significant. At the same time, baseline values in the WFFD group and YFD group were significantly higher compared to the SD group.

The changes in HSI are shown in Figure 4 for three different diet types and 3 different time points: before the diet, after 3 months, and after 6 months of the diet. The HIS level change did not differ between the 3 different diet types, although it was slightly higher in the YFD group (i.e. the yeast-free group) compared to the other 2 groups. There was also a significant decrease in HSI in the WFFD group in the 3- and 6-month measurements compared to baseline measurements in this group.

## Two-step cluster analysis

Cluster analysis enables participants' grouping based on similarities in individual parameters. Here, 3 different diet groups of patients were divided into 2 clusters, with BMI making the principal difference. In Figure 5, the model summary is presented along with silhouette measures of cohesion and separation, indicating the optimal level of cluster quality. Figure 6 shows the relative value of distinct parameters that are included in the study, i.e. their importance in obesity status determination. Figure 6 shows that BMI and HSI are the most important determinants of cluster affiliation.

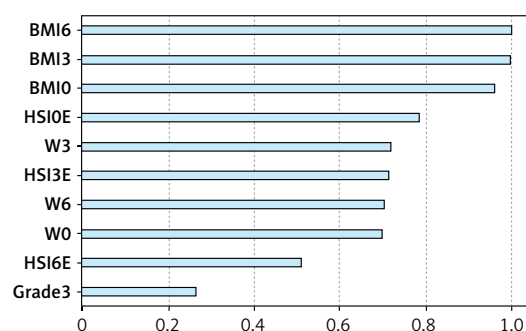
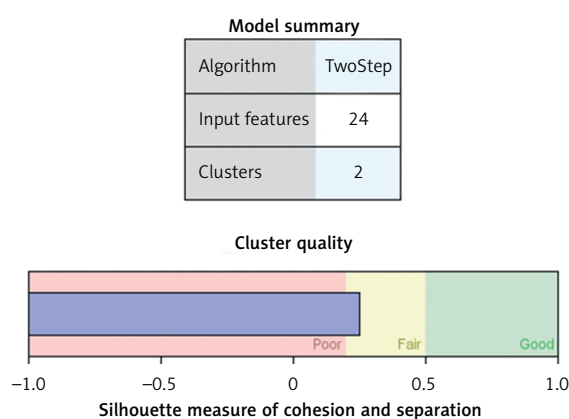
Two groups (clusters) were identified: obese and non-obese patients. Table V displays the parameter values for each of these groups. According to patients' clustering, obese patients had higher HSI (as would be expected based on the formula of HSI calculation), weight, and BMI in all 3 study periods. This analysis grouped significantly more women in the obese group. A smaller number of patients with NAFLD grade 1 and a higher number of patients with NAFLD grade 3 were detected at baseline in the obese group compared to the non-obese group. Similarly, a significantly smaller number of patients with NAFLD grade 0 in obese patients were detected compared to non-obese patients after 3 months, as well as after 6 months of the study.

## Discussion

This study investigated the impact of several dietary therapies on BMI, TG levels, degree of hepatosteatosis, and HSI in patients with NAFLD. The findings indicate that there were notable biochemical and clinical enhancements, particularly in the WFFD and HFD groups, in comparison to a standard diet that just involved calorie restriction. The absence of disparity in demographic and biochemical data across the groups at the study's

onset implies that the variations in the study's outcomes were attributable to the implemented diets. The notable reductions observed in BMI and TG levels, particularly in the WFFD and HFD groups after 6 months, provide evidence of the beneficial impact of these diets on metabolic health.

Wheat flour, a commonly consumed grain product, is believed to potentially impact metabolic health due to its gluten, fibre, and other constituents [29]. Scientific literature provides evidence that gluten and other protein constituents included in wheat flour can have an impact on the microorganisms present in the intestines [13, 14]. These findings indicate that the constituents present in wheat flour, particularly gluten and fructans, have the potential to induce inflammation in the liver [30]. The ingestion of wheat flour potentially causes inflammation in the mucosa of the intestines and impairs the function of the intestinal barrier, resulting in the release of endotoxins into the bloodstream. The current scenario can initiate inflammatory mechanisms in the liver and contribute to the progression of NAFLD. Furthermore, the presence of high glycaemic index carbohydrates in wheat flour might lead to a rise in insulin resistance and have an impact on TG levels [31]. This could lead to enhanced hepatic lipid deposition and facilitate the development of NAFLD. Nevertheless, the presence of non-digestible carbohydrates in wheat flour indicates that it could potentially enhance intestinal well-being and yield favourable outcomes for metabolic health. Fibre is recognised for its ability to decrease inflammation and regulate lipid metabolism through the regulation of the intestinal microbiota. The precise contribution of wheat flour to the development of NAFLD remains unclear, and there are contradictory findings on this matter. Specifically, conducting molecular-level investigations is necessary to gain a more profound comprehension of the impact that individual constituents of wheat flour have on NAFLD. Furthermore, it is imperative to conduct



**Table V.** Cluster definition according to obesity status

Cluster	1	2	P-value
Size	126 (56.5%)	97 (43.5%)	
Features	Non-obese	Obese	
BMI baseline	29.2 ±3.2	38.4 ±4.7	< 0.001
BMI 3m	28.6 ±3.2	37.7 ±4.4	< 0.001
BMI 6m	28.3 ±3.1	37.3 ±4.4	< 0.001
Weight baseline	82.1 ±10.4	99.8 ±12.7	< 0.001
Weight 3m	80.6 ±10.4	97.9 ±11.6	< 0.001
Weight 6m	79.7 ±10.7	96.9 ±11.8	< 0.001
HSI baseline	41.4 ±5.1	50.8 ±5.6	< 0.001
HSI 3m	40.1 ±5.5	50.3 ±5.7	< 0.001
HSI 6m	40.6 ±6.2	50.8 ±7.2	< 0.001
ALT baseline	37.4 ±23.6	34.0 ±22.7	ns
ALT 3m	29.6 ±18.5	32.8 ±23.6	ns
ALT 6m	30.5 ±21.6	31.5 ±33.7	ns
TG baseline	215 ±147	200 ±138	ns
TG 3m	200 ±131	200 ±172	ns
TG 6m	179 ±126	173 ±85	ns
AST baseline	27.2 ±12.9	26.8 ±14.2	ns
AST 3m	24.5 ±11.2	25.6 ±15.7	ns
AST 6m	23.6 ±11.8	23.5 ±17.4	ns
Diet group (%) control/ yeast-free/bread-free	24.7/31.2/44.2	18.0/41.6/40.4	ns
Grade baseline 0/1/2/3	0/42.2/46.1/11.7	0/15.7/59.6/24.7	< 0.001
Grade 3m, 0/1/2/3	13.6/56.5/27.3/2.6	2.2/43.8/42.7/11.2	< 0.001
Grade 6m, 0/1/2/3	31.8/48.1/16.9/3.2	2.2/48.9/44.9/4.5	< 0.001
Gender (%) woman/man	46.8/53.2	75.3/24.7	< 0.001
DM status, yes/ no	35.7/69.0	41.6/58.4	ns

P from Student's t-test for continuous and  $\chi^2$  test for categorical variables. BMI – body mass index, HSI – hepatic steatosis index, AST – aspartate aminotransferase, ALT – alanine aminotransferase, TG – triglyceride, DM – diabetes mellitus, ns – non-significant.

clinical trials to assess the enduring consequences of wheat flour consumption. However, it is important to remember that genetic variations and unique reactions among people can influence the impact of wheat flour. These variables emphasise the necessity of creating customised nutritional approaches to gain a deeper understanding of the impact of wheat flour on NAFLD.

A significant discovery from the study is that diets devoid of wheat flour and diets lacking baker's yeast produce similar outcomes. This supports the positive effects of baker's yeast on NAFLD, especially considering its effects on the gut microbiota [21, 23]. Baker's yeast, a conventional ingredient in various baked goods, contains yeast, proteins, and other constituents that influence the gut microbiota. Prior research has demonstrated that the gut microbiota has a crucial impact on the development of NAFLD [23, 32]. The parts of baker's yeast that are involved in this situation, especial-

ly beta-glucans and other adhesive compounds found in yeast cell walls, could cause inflammation and changes in permeability of the intestinal mucosa. This could cause a decline in the integrity of the intestinal barrier, potentially allowing endotoxins to enter the bloodstream, which in turn may initiate inflammatory reactions in the liver [21]. Moreover, the presence of gluten and other protein constituents found in baker's yeast can trigger immunological responses in the intestine, leading to heightened inflammation of the intestinal mucosa. Inflammation in the intestinal mucosa may play a role in the development of NAFLD [23, 32]. This is because it raises systemic inflammation, which makes it easier for fat to build up in the liver [23, 32].

Regarding analysis of the hepatosteatosis index, a notable reduction was noted in the WFFD group. This discovery strengthens the evidence of the impact of WFFD on liver steatosis. The correlation be-



tween HSI and BMI once again demonstrates the significant association between obesity and liver steatosis [33, 34]. The findings provide evidence that HSI can serve as a dependable biomarker for assessing the severity of hepatic steatosis.

After performing a 2-stage cluster analysis, distinct disparities were observed between patients who were obese and those who were not obese. The higher percentage of females in the obese group underscores the influence of gender in the progression of obesity and NAFLD. Some literature data suggest that women may have a higher susceptibility to obesity and metabolic problems as a result of hormonal disparities [34, 35]. This study also supports these perspectives.

While our study offers insights into the impact of various diets on NAFLD, a widespread global illness, it is important to acknowledge its limitations. Assessments made taking into account these constraints are crucial for both evaluating the findings and planning future research. Our study was unfortunately conducted during the same time period as the COVID-19 epidemic, which had a significant impact on our research. Despite our original enrolment of 450 patients with NAFLD and a meticulous randomisation process, the study had to remove a significant number of participants due to their inability to attend regular follow-up appointments as a result of the pandemic. Both our randomisation process and sample size were negatively affected by this. This condition resulted in a disparity in numbers between the diet groups. Furthermore, our study was constrained by a time frame of only 6 months. While this approach enabled us to assess immediate and intermediate outcomes, it may have resulted in the neglect of long-term impacts and possible adverse consequences. The efficacy of dietary treatments in studies relies on the degree to which participants comply with their recommended diets. This study assessed dietary compliance based on self-reported statements from the participants, without objective measurements, and with inadequate control over factors that could influence dietary compliance. Simultaneously, the lifestyle and physical activity levels of the subjects are unmodifiable variables. In our study, the data obtained using biochemical and clinical indicators such as BMI, TG, HSI, and ultrasonography may not always provide a complete representation of fatty liver. Utilising more advanced imaging techniques or approaches, such as magnetic resonance imaging and liver biopsy, can provide more precise data to evaluate the extent of fatty liver. Nevertheless, these methods are invasive and expensive, thus requiring their restricted application. The study was conducted in a single centre, which may restrict the applicability of the findings to other geographic regions or population groups.

Ultimately, while this study's results showcase the possible advantages of dietary interventions for individuals with NAFLD, it is important to take into account the highlighted limitations when interpreting them. To address these limitations, future research should incorporate bigger and more diverse sample groups, extend the follow-up periods, and employ more complete data collection methods. Thus, employing this approach enables a more distinct and dependable assessment of the impact of diets on NAFLD.

In conclusion, this study investigated the impact of various diets on the treatment of NAFLD, and it showed that the wheat flour-free diet and yeast-free diet have potential effectiveness in lowering liver steatosis. Furthermore, the strong correlation between obesity and HSI results underscores the significance of BMI in assessing hepatic steatosis. The study indicates that diets excluding wheat flour and yeast may have positive effects on the treatment of NAFLD. However, it highlights the need for more research with bigger sample numbers and longer durations to validate these findings. The acquired findings illustrate the potential impact of individualised dietary approaches in the management of NAFLD and offer a significant basis for future investigation.

## Acknowledgments

The author (JKS) from the University of Belgrade-Faculty of Pharmacy is financially supported by the Ministry of Science, Technological Development and Innovation, Republic of Serbia (contract No: 451-03-65/2024-03/ 200161 and No: 451-03-66/2024-03/200161).

## Funding

No external funding.

## Ethical approval

This study was approved by Ataturk University Clinical Research Local Ethics Committee (approval date: 30.05.2019, approval number: B.30.2.ATA.0.01.00/06). The study ensured that subjects provided free consent, demonstrating complete adherence to the Declaration of Helsinki. Moreover, the study strictly adhered to ethical guidelines.

## Conflict of interest

The authors declare no conflict of interest.

## References

1. Polyzos SA, Kountouras J, Mantzoros CS. Obesity and nonalcoholic fatty liver disease: from pathophysiology to therapeutics. *Metabolism* 2019; 92: 82-97.

2. Mitrovic B, Gluvic ZM, Obradovic M, et al. Non-alcoholic fatty liver disease, metabolic syndrome, and type 2 diabetes mellitus: where do we stand today? *Arch Med Sci* 2023; 19: 884-94.
3. Rinella ME, Lazarus JV, Ratziu V, et al.; NAFLD Nomenclature consensus group. A multi-society Delphi consensus statement on new fatty liver disease nomenclature. *Hepatology* 2023; 78: 1966-86.
4. Meneses D, Oliveira A, Corripio R, et al. Performance of noninvasive liver fibrosis scores in the morbid obese patient, same scores but different thresholds. *Obes Surg* 2020; 30: 2538-46.
5. Zhou XD, Targher G, Byrne CD, et al. An international multidisciplinary consensus statement on MAFLD and the risk of CVD. *Hepatol Int* 2023; 17: 773-91.
6. Pan Q, Fan JG, Yilmaz Y. Pathogenetic pathways in non-alcoholic fatty liver disease: an incomplete jigsaw puzzle. *Clin Liver Dis* 2023; 27: 317-32.
7. Klisic A, Kavaric N, Abenavoli L, et al. Is endocan a novel potential biomarker of liver steatosis and fibrosis? *J Med Biochem* 2020; 39: 363-71.
8. Rafaqat S, Gluscevic S, Mercantepe F, Rafaqat S, Klisic A. Interleukins: pathogenesis in non-alcoholic fatty liver disease. *Metabolites* 2024; 14: 153.
9. Park J, Kim G, Kim H, et al. The association of hepatic steatosis and fibrosis with heart failure and mortality. *Cardiovasc Diabetol* 2021; 20: 197.
10. Tian F, Guo Y, Zhou L, et al. Comparison of glimepiride and linagliptin in the treatment of non-alcoholic hepatic disease with type 2 diabetes mellitus. *Arch Med Sci DOI: <https://doi.org/10.5114/aoms/161228>*.
11. Brboric J, Klisic A, Kotur-Stevuljevic J, et al. Natural and natural-like polyphenol compounds: in vitro antioxidant activity and potential for therapeutic application. *Arch Med Sci* 2023; 19: 651-71.
12. Perdomo CM, Frühbeck G, Escalada J. Impact of nutritional changes on nonalcoholic fatty liver disease. *Nutrients* 2019; 11: 677.
13. Suárez M, Boqué N, del Bas JM, Mayneris-Perxachs J, Arola L, Caimari A. Mediterranean diet and multi-ingredient-based interventions for the management of non-alcoholic fatty liver disease. *Nutrients* 2017; 9: 1052.
14. Anania C, Massimo Perla F, Olivero F, Pacifico L, Chiesa C. Mediterranean diet and nonalcoholic fatty liver disease. *World J Gastroenterol* 2018; 24: 2083-94.
15. Watanabe M, Tozzi R, Risi R, et al. Beneficial effects of the ketogenic diet on nonalcoholic fatty liver disease: a comprehensive review of the literature. *Obes Rev* 2020; 21: e13024.
16. Wang H, Wang L, Cheng Y, Xia Z, Liao Y, Cao J. Efficacy of orlistat in non-alcoholic fatty liver disease: a systematic review and meta-analysis. *Biomed Reports* 2018; 9: 90-6.
17. Riazi K, Raman M, Taylor L, Swain MG, Shaheen AA. Dietary patterns and components in nonalcoholic fatty liver disease (NAFLD): what key messages can health care providers offer? *Nutrients* 2019; 11: 2878.
18. Aguiar EV, Santos FG, Krupa-Kozak U, Capriles VD. Nutritional facts regarding commercially available gluten-free bread worldwide: recent advances and future challenges. *Crit Rev Food Sci Nutr* 2023; 63: 693-705.
19. Mohamed DA, Abdelgayed SS, Essa HA, Mohamed RS. Preparation and evaluation of functional foods for prevention of non-alcoholic fatty liver disease. *Pakistan J Biol Sci* 2018; 21: 454-62.
20. Nehmi-Filho V, Santamarina AB, de Freitas JA, et al. Novel nutraceutical supplements with yeast  $\beta$ -glucan, prebiotics, minerals, and Silybum marianum (silymarin) ameliorate obesity-related metabolic and clinical parameters: a double-blind randomized trial. *Front Endocrinol (Lausanne)* 2023; 13: 1089938.
21. Liu Q, Liu S, Chen L, et al. Role and effective therapeutic target of gut microbiota in NAFLD/NASH (review). *Exp Ther Med* 2019; 18: 1935-44.
22. Demir M, Lang S, Hartmann P, et al. The fecal mycobiome in non-alcoholic fatty liver disease. *J Hepatol* 2022; 76: 788-99.
23. Xie C, Haleboua-Demarzio D. Role of probiotics in non-alcoholic fatty liver disease: does gut microbiota matter? *Nutrients* 2019; 11: 2837.
24. Asgharpour A, Cazanave SC, Pacana T, et al. A diet-induced animal model of non-alcoholic fatty liver disease and hepatocellular cancer. *J Hepatol* 2016; 65: 579-88.
25. Lee JH, Kim D, Kim HJ, et al. Hepatic steatosis index: a simple screening tool reflecting nonalcoholic fatty liver disease. *Dig Liver Dis* 2010; 42: 503-8.
26. De Lucia Rolfe E, Brage S, Sleight A, et al. Validity of ultrasonography to assess hepatic steatosis compared to magnetic resonance spectroscopy as a criterion method in older adults. *PLoS One* 2018; 13: 87-99.
27. Hackensack N. Handbook of medical statistics. 1st ed. Singapore: World Scientific Publishing Co. Pte. Ltd.; 2017.
28. Wade S. Bayesian cluster analysis. *Philos Trans R Soc A* 2023; 381.
29. Katsiki N, Stoian Pantea A, Rizzo M. Dietary patterns in non-alcoholic fatty liver disease (NAFLD): stay on the straight and narrow path! *Clin Investig En Arterioscler* 2022; 34: 24-31.
30. Kwanten WJ. Diet and non-alcoholic fatty liver disease, a short narrative review. *Acta Gastroenterol Belg* 2023; 86: 306-10.
31. Ullah R, Rauf N, Nabi G, et al. Role of nutrition in the pathogenesis and prevention of non-alcoholic fatty liver disease: recent updates. *Int J Biol Sci* 2019; 15: 265-76.
32. Quesada-Vázquez S, Aragonès G, Del Bas JM, Escoté X. Diet, gut microbiota and non-alcoholic fatty liver disease: three parts of the same axis. *Cells* 2020; 9: 176.
33. Klisic A, Isakovic A, Kocic G, et al. Relationship between oxidative stress, inflammation and dyslipidemia with fatty liver index in patients with type 2 – diabetes mellitus. *Exp Clin Endocrinol Diabetes* 2018; 126: 371-8.
34. Klisic A, Kavaric N, Jovanovic M, Soldatovic I, Gligorovic-Barhanovic N, Kotur-Stevuljevic J. Bioavailable testosterone is independently associated with Fatty Liver Index in postmenopausal women. *Arch Med Sci* 2017; 13: 1188-96.
35. Della Torre S. Beyond the x factor: relevance of sex hormones in NAFLD pathophysiology. *Cells* 2021; 10: 2502.