

“HER2-Low Status in Breast Cancer: Clinicopathological Factors and Prognostic Value”

Keywords

breast cancer, prognostic factors, overall survival, HER2-low status, HER2-zero status, HER2-positive

Abstract

Introduction

This study aimed to assess the prognostic importance of HER2-low status in breast cancer (BC). Additionally, we compared the HER2-low subgroup (defined as HER2-low1+; HER2-low2+/ISH(-)) with HER2-zero and HER2-positive subgroups according to clinical, histopathological and molecular features.

Material and methods

The study analyzed the medical records of BC patients treated at the National Institute of Oncology in Gliwice, Poland, between 2002-2018. HER2 overexpression was assessed in postoperative specimens or samples obtained via core needle biopsy.

Results

Of the 657 tumors, 176 (27%) tumors were classified as HER2-low BC, 248 (38%) as HER2-zero and 233 (35%) as HER2-positive tumors. BC patients with HER2-low tumors were more likely to have hormone receptor-positive (HR+) status compared to those with HER2-zero tumors (82.4% vs. 62.1%, $P < 0.001$). Specifically, patients with HER2-low1+ tumors had a higher frequency of HR+ status versus both HER2-zero and HER2-positive tumors. Similarly, patients with HER2-low2+/ISH(-) tumors were more frequently characterized as HR+ compared to HER2-zero and HER2-positive patients. In the subgroup of patients with estrogen receptor negative tumors, OS was slightly worse than for those with HER2-low status compared to HER2-zero patients (5-year OS 72.6% vs. 86.7%, $P = 0.074$). A tendency toward poorer OS was noted in HER2-low1+ patients with negative prognostic factors, including HR-, progesterone receptor-negative, grade 3, and larger tumors.

Conclusions

HER2-low status appears to be associated with worse OS in breast cancer patients with certain negative prognostic factors versus HER2-zero status. Also, HER2-low1+ and HER2-low2+/ISH(-) subgroups were characterized by HR+ status.

“HER2-Low Status in Breast Cancer: Clinicopathological Factors and Prognostic Value”

Short title: HER2-Low Status in Breast Cancer.

Abstract:

Background: This study aimed to assess the prognostic importance of HER2-low status in breast cancer (BC). Additionally, we compared the HER2-low subgroup (defined as HER2-low1+; HER2-low2+/ISH(-)) with HER2-zero and HER2-positive subgroups according to clinical, histopathological and molecular features. **Methods:** The study analyzed the medical records of BC patients treated at the National Institute of Oncology in Gliwice, Poland, between 2002-2018. HER2 overexpression was assessed in postoperative specimens or samples obtained via core needle biopsy. **Results:** Of the 657 tumors, 176 (27%) tumors were classified as HER2-low BC, 248 (38%) as HER2-zero and 233 (35%) as HER2-positive tumors. BC patients with HER2-low tumors were more likely to have hormone receptor-positive (HR+) status compared to those with HER2-zero tumors (82.4% vs. 62.1%, $P < 0.001$). Specifically, patients with HER2-low1+ tumors had a higher frequency of HR+ status versus both HER2-zero and HER2-positive tumors. Similarly, patients with HER2-low2+/ISH(-) tumors were more frequently characterized as HR+ compared to HER2-zero and HER2-positive patients. In the subgroup of patients with estrogen receptor negative tumors, OS was slightly worse than for those with HER2-low status compared to HER2-zero patients (5-year OS 72.6% vs. 86.7%, $P = 0.074$). A tendency toward poorer OS was noted in HER2-low1+ patients with negative prognostic factors, including HR-, progesterone receptor-negative, grade 3, and larger tumors. **Conclusion:** HER2-low status appears to be associated with worse OS in breast cancer patients with certain negative prognostic factors versus HER2-zero status. Also, HER2-low1+ and HER2-low2+/ISH(-) subgroups were characterized by HR+ status.

Key words: breast cancer, HER2-low status, HER2-zero status, HER2-positive, overall survival, prognostic factors.

Introduction:

The HER2/neu (ERBB2) oncogene is increased in copy number and/or overexpressed in about 15%-20% of breast cancers (BC) and serves as a significant prognostic marker for relapse and poor overall survival (OS) [1]. However, the development of anti-HER2 therapies has improved the prognosis for patients with both advanced and early-stage HER2-positive breast cancer [2,3,4].

Breast cancer is categorized into four distinct subtypes based on hormone receptor (HR) and human epidermal growth factor receptor 2 (HER2) status, and these are as follows: HR+/HER2-, HR+/HER2+, HR-/HER2+, and HR-/HER2 [5]. In medical practice, international guidelines divide BC into HER2-positive (HER2+) and HER2-negative (HER2-) categories to inform treatment decisions [6]. HER 2 overexpression is assessed as HER2-zero, HER2 IHC1+, HER2 IHC2+/ISH-negative, HER2 IHC2+/ISH-positive, HER2 IHC3+. HER2 positivity is defined as an IHC score of 3+ or 2+ with in situ ISH amplification [7]. Recent studies have proposed a novel subgroup of breast cancers called “HER2-low breast cancer”, defined by an IHC score of 1+ or 2+ without ISH amplification [8,9]. In clinical settings, these tumors-were not considered candidates for anti-HER2 therapies. Two-thirds of HR-positive tumors and one-third of triple-negative tumors exhibit low HER2 expression by immunohistochemistry (IHC).[10]. Earlier research has demonstrated that HER2-low breast cancers are more frequently associated with HR-positive (HR+) status, lower tumor grade, lower Ki67 and a higher proportion of invasive lobular carcinoma [11,12].

Some studies have looked at the prognostic value of HER2-low status in breast cancer patients [10,13,14,15,16,17,18, 19]. Moreover, distinct survival patterns and clinicopathological characteristics were also reported between HER2-low IHC 1+ and HER2-low IHC 2+w/ISH-negative subgroups [13,20,21].

The purpose of this study was to assess the prognostic importance of HER2-low status in BC. We also compared HER2-low (HER2-low1+; HER2-low2+/ISH(-)) subgroup with HER2-zero and HER2-positive subgroups in terms of clinical, histopathological and molecular factors.

Material and methods

Patients

The retrospective study was carried out on a cohort of 657 females diagnosed with breast cancer (BC) treated at the Maria Skłodowska-Curie National Research Institute of Oncology (Gliwice Branch) between 2002 and 2018. Demographic data, such as age, menopausal status and family history, as well as tumor features like histology, estrogen receptor (ER) and progesterone receptor (PR) status, HER2 status (including both IHC and ISH results), Ki67, and disease stage according to the TNM staging system (T-tumor size; N-nodal involvement; and M-metastasis) were collected from hospital medical files and pathology reports. Additional data included the presence of contralateral breast cancer and details regarding the treatment strategy, including surgical procedures, systemic treatment or radiotherapy. The analysis of patient medical records was conducted in compliance with domestic legal regulations. All patients in this study were treated following the latest standard guidelines for chemotherapy and radiotherapy, irrespective of their HER2 status. Patients continue to undergo regular follow-up at the cancer research center. The complete overview of patients' demographic and clinicopathological features is presented in [Table I](#).

Ethical issues

The study received approval from the Bioethics Committee of the Maria Skłodowska-Curie National Research Institute of Oncology in Warsaw (approval no. 66/2024).

HR and HER2 classification

Human epidermal growth factor receptor 2 (HER2) overexpression was evaluated by means of an immunohistochemistry (IHC) in postoperative specimens or in samples collected via core needle biopsy. Patients' HER2 status was categorized as 0, + 1, + 2, or + 3 according to IHC results. Scores of 0, + 1, and + 3 represent HER2-zero, HER2-low, and HER2-positive, respectively. For cases with IHC 2+, additional testing for HER2 gene amplification was conducted using

fluorescence in situ hybridization (FISH). HER2 expression was checked using IHC and ISH based on the latest version of the American Society of Clinical Oncology/College of American Pathologists Clinical Practice (ASCO/CAP) guidelines available on the day of surgery [7]. In summary, HER2-low was classified as IHC 1+ (HER2-low1+) and IHC 2+with negative ISH (HER2-low2+/ISH(-)). HER2-zero was defined as IHC 0, while scores of 3+ or 2+/ISH+ correspond to HER2-positive status. Tumor samples with more than 1% of tumor nuclei positive for estrogen receptor (ER) or progesterone receptor (PR) were classified as ER/PR positive. HR positivity was defined as the presence of ER and/or PR positivity [22].

Statistical analysis

Statistical analysis was carried out with Statistica 13.1 (TIBCO Software Inc.). Categorical variables were presented as frequencies and percentages. Fisher's exact tests were used to compare patient subgroups, with the Benjamini-Hochberg correction applied to address multiple comparisons. Statistical significance was determined by a p-value < 0.05. Survival curves were determined with the Kaplan–Meier method and comparisons between groups were performed using the log-rank test. Confounding and effect-modifying variables were studied through multivariate analysis. The Cox proportional hazards model was applied for both univariate and multivariate analysis to assess the impact of selected variables on OS. Variables with a p-value <0.200 were accepted for the multivariate analysis.

Results

Patient characteristics

The median age of all females was 52 years (range: 24 to 81 years). Among the tumors, 176 (27%) were classified as HER2-low, 248 (38%) as HER2-zero, and 233 (35%) as HER2-positive. Within the HER2-low group, 136 tumors were categorized as HER2-low1+ and 40 as HER2-low2+/ISH(-). No significant differences were reported between the three subgroups (HER2-zero;

HER2-low; HER2-positive) concerning family history of cancer, co-existing medical conditions, and menopausal status. Patients with HER2-positive tumors were marked with a higher incidence of larger tumor size (T3-T4) (23.2%), lymph node metastases (N+) (55.4%) and higher histologic tumor grade (G3) (41.2%). However, positive estrogen receptor (ER+) status (80.1%), positive progesterone receptor (PR+) status (76.1%) and positive HR status (82.4%) were more often reported in patients with HER2-low tumors. Invasive ductal carcinoma was more common in patients with HER2-positive tumors versus those with HER2-low and HER2-zero tumors (84.1% vs. 71.6% vs. 70.6%; $P < 0.001$). Pathogenic/likely pathogenic *BRCA* gene variants were substantially more prevalent in subjects with HER2-zero tumors (14.9% $P < 0.001$). On the other hand, pathogenic/likely pathogenic *CHEK2* variants were more frequently observed in females with HER2-low tumors versus those with HER2-positive and HER2-zero tumors (9.1% vs. 3.4% vs. 6.9%; $P = 0.050$). The patient features according to clinicopathological factors are shown in Table I.

Comparison of HER2-low tumors with HER2-zero breast cancer.

There were no significant differences in molecular factors, including *BRCA* gene mutations ($P = 0.780$) or age ($P = 0.825$), between subjects with HER2-low tumors and HER2-zero tumors. Similarly, no differences were reported between the two groups with respect to family history of cancer ($P = 1.00$), co-morbid conditions ($P = 0.151$), menopausal status ($P = 1.00$), tumor size (T3-T4) ($P = 1.0$), lymph node metastases (N+) ($P = 1.0$), or histologic tumor grade (G3) ($P = 0.386$). However, BC patients with HER2-low tumors more frequently had positive estrogen receptor (ER+) status (80.1% vs. 59.3%, $p < 0.001$) and progesterone receptor (PR+) status (76.1% vs. 55.2%, $P < 0.001$) compared to females with HER2-zero tumors. There were also notable differences between the two groups regarding combined hormone receptor (HR+) (82.4% vs. 62.1%, $P < 0.001$) (Table I).

BC subjects with HER2-low1+ tumors were more likely to have positive hormone receptor (HR+) status compared to those with HER2-zero (82.4% vs. 62.1%, $P < 0.001$). Specifically, ER+ status was observed in 80.9% of patients with HER2-low1+ tumors compared to 59.3% in HER2-

zero patients ($P < 0.001$), and PR+ status was observed in 74.3% of HER2-low1+ patients compared to 55.2% in the HER2-zero group ($P < 0.001$). Similar results were obtained for the subgroup with HER2-low2+/ISH(-) tumors, where patients also more frequently had positive HR status versus those with HER2-zero tumors (82.5% vs. 62.1%, $P = 0.025$).

In total, 94 tumors were classified as TNBC HER2-zero, while 24 tumors were HER2-low1+ and 7 tumors were HER2-low2+/ISH(-). No significant differences were noted between TNBC HER2-zero and TNBC HER2-low1+ with respect to co-morbid conditions ($P = 0.657$), menopausal status ($P = 1.00$), tumor size (T3-T4) ($P = 1.00$), lymph node metastases ($P = 0.629$), or histologic tumor grade (G3) ($P = 1.00$). Similarly, there were no differences between TNBC HER2-zero and HER2-low2+/ISH(-) tumors according to the above mentioned factors.

Comparison of HER2-low tumors with HER2-positive breast cancer.

Significant differences were reported between HER2-low and HER2-positive tumors regarding ER+ (80.1% vs. 63.9%, $P < 0.001$), PR + (76.1% vs. 54.5%, $P < 0.001$), HR+ (82.4% vs. 63.9%, $P < 0.001$), and the invasive ductal carcinoma (IDC) subtype (71.6% vs. 84.1%, $P = 0.003$). *BRCA* pathogenic/likely pathogenic variants were more common in patients with HER2-low breast cancer compared to HER2 positive tumors (13.6% vs. 0.9%, $P < 0.001$). Similarly, *CHEK2* pathogenic/likely pathogenic variants were noted more often in the HER2-low subtype compared to HER2-positive tumors (9.1% vs. 3.4%, $P = 0.058$) (Table I).

Lymph node metastases (N+) were detected more frequently in females with HER2-positive tumors versus those with HER2-low1+ tumors (55.4% vs. 34.6%, $P < 0.001$) and a HER2-low2+/ISH(-) tumors (55.4% vs. 27.5%, $P = 0.004$). BC patients with HER2-low1+ tumors more frequently had positive hormone receptor (HR+) status compared to HER2-positive tumors (82.4% vs. 63.9%, $P = 0.003$). In addition, females with HER2-low2+/ISH(-) more frequently had positive HR status compared to HER2-positive status (82.5% vs. 63.9%, $P = 0.042$). In contrast, negative progesterone receptor status was more often reported in the HER2-positive subgroup compared to HER2-low1+ ($P = 0.001$) and HER2-low2+/ISH(-) ($P = 0.002$) groups. A higher histological tumor

grade (G3) was reported more frequently in subjects with HER2 positive tumors compared to HER2-low 1+ breast cancer (41.2% vs. 27.2%, $P = 0.043$) or HER2-low2+/ISH(-) (41.2% vs. 25.05, $P = 0.111$).

Comparison of HER2-low1+ tumors with HER2-low2+/ISH(-) breast cancer.

However, no differences were found between the HER2-low1+ tumors and HER2-low2+/ISH(-) subgroups regarding positive hormone receptor (HR+) status (82.4% vs. 82.5%, $P = 1.00$). Similarly, no differences were detected between the two subgroups regarding family history of cancer (40.4% vs. 42.5%, $P = 1.00$), co-morbid conditions (42.6% vs. 32.5%, $P = 0.552$), menopausal status (47.8% vs. 55.0%, $P = 1.00$), tumor size T3-T4 (16.9% vs. 15.0%, $P = 1.00$), lymph node metastases (N+) (34.6% vs. 27.5%, $P = 0.674$), or higher histologic tumor grade (G3) (27.2% vs. 25.0%, $P = 0.842$). Additionally, no differences were found between the two subgroups regarding the existence of *BRCA* pathogenic or probably pathogenic variants (16.2% vs. 5.0%, $P = 0.169$). In contrast, the occurrence of *CHEK2* pathogenic or probably pathogenic variants was reported more frequently in patients with HER2-low2+/ISH(-) than in the HER2-low1+ subgroup (20.0% vs. 5.9%, $P = 0.034$) (Table II).

Similarly, no differences were found between HER2-low1+ ER positive tumors and HER2-low2+/ISH(-) ER positive tumors regarding factors such as: family history of cancer (39.1% vs. 41.9%, $P = 1.00$), co-morbid conditions (44.5% vs. 32.3%, $P = 1.00$), menopausal status (49.1% vs. 58.1%, $P = 1.00$), tumor size (T3-T4) (13.6% vs. 12.9%, $P = 1.00$), lymph node metastases (33.6% vs. 29.0%, $P = 1.00$), histologic tumor grade (G3) (20.0% vs. 25.8%, $P = 0.701$), and positive progesterone receptor status (90% vs. 100%, $P = 0.122$). Also, no differences were observed between HER2-low1+ ER negative tumors and HER2-low2+/ISH(-) ER negative tumors according to the same factors.

In contrast, statistically significant differences were found between HER2-low1+ ER positive tumors and HER2-low1+ ER negative subgroups with regard to histologic tumor grade (G3) (20.0% vs. 57.7%, $P < 0.001$) and PR+ (90.0% vs. 7.7%, $P < 0.001$). PR+ status was observed

more frequently in tumors with ER+ HER2-low2+/ISH(-) compared to ER- HER2-low2+/ISH(-) subgroup (100% vs. 22.2%, $P < 0.001$).

Overall survival outcomes

No differences were reported in OS between females with HER2-low status and HER2-zero ($P = 0.747$). In the subgroup of patients with ER-negative receptor status (ER-), overall survival (OS) was slightly worse for those with HER2-low status compared to those with HER2-zero status, although the difference was not statistically significant (5-year OS 72.6% vs. 86.7%, $P = 0.074$) (Fig. 1A). No differences in OS were observed also in subgroup with ER-positive status ($P = 0.763$). The occurrence of lymph node metastases (N+) was found to be similar between the two groups of patients (81.3% vs. 86.9%, $P = 0.599$). A trend toward worse OS was noted in patients with HER2-low status within subgroups showing higher T3-4 (61.2% vs. 75.1%, $P = 0.217$) and G3 (80.7% vs. 89.2%, $P = 0.139$).

For patients with HER2-low1+ status, no significant differences in OS were reported versus those with HER2-zero status ($P = 0.701$). In the subgroup of patients with HR-negative receptor status (HR-) ($P = 0.191$), OS was insignificantly poorer for those with HER2-low1+ compared to the HER2-zero group. A tendency toward worse OS was observed in HER2-low1+ patients with larger tumor sizes (T3-T4) ($P = 0.086$) (Fig. 1B). However, in patients with G3 ($P = 0.042$) (Fig. 1C) and negative estrogen receptor status ($P = 0.036$) (Fig. 1D), OS was significantly poorer in the HER2-low1+ subgroup.

There were no significant differences in OS between females with HER2-low2+/ISH(-) and HER2-zero tumors ($P = 0.967$). A tendency toward better OS was noted in patients with HER2-low2+/ISH(-) in subgroups with negative progesterone receptor status ($P = 0.132$) and negative HR receptor status ($P = 0.161$). No differences in OS were found between patients with HER2-low2+/ISH(-) and HER2-zero in subgroups with T3-T4 ($P = 0.513$), G3 ($P = 0.341$) and ER- ($P = 0.883$).

There were no significant differences in OS between patients with HER2-low1+ status and HER2-low2+/ISH(-) ($P = 0.778$). In the subgroup of patients with HR negative receptor status (HR-) ($P = 0.089$) (Fig. 2A), OS was slightly worse in patients with HER2-low1+ status compared to HER2-low2+/ISH(-). A trend toward worse OS was noted in HER2-low1+ patients within subgroups with negative progesterone receptor status ($P = 0.110$), G3 ($P = 0.090$) (Fig. 2B), and tumor size T3-T4 ($P = 0.128$).

Patients with HER2-low tumors showed a tendency toward better OS compared to the HER2-positive subgroup ($P = 0.144$). In subgroups with histological grade G1-2 ($P = 0.047$) (Fig. 2C), OS was significantly better in the HER2-low subgroup, while in subgroups with T1-T2 ($P = 0.078$) (Fig. 2D), OS was slightly better in the HER2-low subgroup. A trend toward better OS was also noted in females with HER2-low subgroups with PR positive ($P = 0.139$) and ER positive ($P = 0.220$) receptor status.

Univariate analysis revealed several factors linked to poorer OS, including age over 60 years, higher T (T3-4), and the existence of lymph node metastases (N+). Similarly, HER2-positive breast cancer was linked to significantly worse OS versus HER2-zero subtypes. In contrast, both ER-positive and PR-positive statuses were associated with better OS. Multivariate analysis confirmed the independent influence of factors such as age over 60 years, T3-T4, N+, and ER and PR status on OS, suggesting that HER2 expression does not significantly impact OS results (Table III).

The strengths of this study include a follow-up time for survival events longer than five years (ranging from 7 to 13 years), relatively complete data in our database, and consideration of certain genetic factors. However, this study has also some limitations. It was a single-center and retrospective analysis, which limits the generalizability of results. Additionally, the number of patients in some subgroup evaluations was small, potentially affecting the statistical power of the analysis.

Discussion

In this study, we evaluated the clinical, histological, and survival features of HER2-low breast cancer patients, as well as HER2-zero and HER2-positive subgroups in a cohort of 657 patients. Of these, 176 (27%) tumors were defined as HER2-low breast cancer. The HER2-low group included 136 subjects with HER2-low1+ and 40 patients with HER2-low2+/ISH(-) status. In previous studies, the HER2-low subgroup has constituted around 30-50% of the total research population [23,24,25].

Consistent with previous research [13,18,26,27, 28, 29], our study revealed a significantly higher frequency of hormone receptor (HR) status positivity (ER and PR) in the HER2-low group compared to the HER2-zero and HER2-positive subgroups. Specifically, HER2-low tumors were more probable to be HR positive than HER2-zero or HER2-positive tumors. In the literature, the HER2-low subgroup is related to less aggressive clinicopathological characteristics, such as a lower prevalence of grade 3 tumors, a lower Ki67 index, and a smaller number of *TP53* mutations. This suggests that HER2-low tumors more closely resemble HER2-negative rather than the HER2-positive tumors [13]. Petrelli et al. also observed more favorable prognostic factors in HER2-low patients, such as lower Ki67%, more ER-positive cases, and a higher proportion of grade 2 tumors versus HER2 IHC 0 [10]. Similarly, Yang et al. reported a lower incidence of histological grade III cases (29.4% vs. 38.8%, $P < 0.001$) and a greater percentage of HR-positive cases (89.6% vs. 75.6%, $P < 0.001$) in HER2-low tumors versus HER2-zero tumors [16]. Yang et al found that HER2-low breast cancer was strongly linked to increased HR and AR expression, as well as a lower Ki67 index. [30]. Similar results were observed in a study conducted by Sato et al. Their analysis showed that the presence of HER2-low breast cancer was significantly associated with HR-positive status and a lower median Ki-67 compared to HER2-negative patients [28]. Additionally, clinicopathological features such as ductal adenocarcinomas histology and hormone receptor positivity were more frequently reported by Khalil et al [27]. A combined analysis of four prospective neoadjuvant clinical trials with 2,310 subjects revealed that HER2-low breast cancers were more commonly HR-positive, had lower histological grades (I and II), and displayed a reduced Ki-67 labeling index [25]. Additional research has linked the HER2-low group with non-IDC

histotypes and a tendency toward the absence of necrosis [31]. However, in a study by Nonneville et al., no statistical differences were found regarding patient age, clinical T and N stages, pathological type, type of breast surgery or type of surgical axillary surgery between HER2-low and HER2-0 tumors. HER2-low status was, however, independently associated with HR-positivity [32]. Schettini et al. and Agostinetto et al. have shown that HER2-low breast cancers constitute a heterogeneous group based on molecular subtypes. They reported that luminal A (50.8-56.9%) and luminal B (22.8-28.8%) subtypes were most prevalent, followed by basal-like (13.3-17.7%) and HER2-enriched (3.5-3.6%) subtypes [14]. Zhang et al. reported a similar distribution, with luminal B (58.9%-76%) and luminal A (20%-28.6%) being the most frequent subtypes [33]. These studies reported a high occurrence of luminal subtypes and fewer HER2-enriched and basal-like subtypes in HR+/HER2-low tumors [14,33,34]. However, no significant association between clinical and pathological factors and HER2-low status in male breast cancer (MBC) was reported [35]. The Expert Consensus Statements by the European Society for Medical Oncology (ESMO) suggest that HER2-low tumors should be considered rather a heterogeneous group of tumors than a distinct molecular entity [36].

In our study, there were no differences in molecular factors such as BRCA gene mutations, patient age, family cancer history, co-existing conditions, menopausal status, tumor size (T3-T4), lymph node metastasis (N+), or higher histological grade (G3) between patients with HER2-low and HER2-zero tumors. HR positivity was more common in patients with HER2-low tumors. Invasive ductal carcinoma was more frequently reported in females with HER2-positive tumors compared to HER2-low and HER2-zero status. Pathogenic/likely pathogenic variants of *BRCA* gene were characteristic of patients with HER2-zero tumors, while pathogenic/likely pathogenic *CHEK2* variants were more common in HER2-low tumors than in either HER2-positive or HER2-zero tumors.

Li et al. reported that HER2-low TNBC were linked to the lack of necrosis and a higher pN stage. The features of the HER2-low group were assessed based on the HR status, younger age, and smaller tumor size [31]. HER2-low breast cancer was more commonly reported in patients with

HR-positive status than in those with TNBC. HER2-low TNBC was characterized by a high lymph node ratio and positive lymphatic invasion [37]. Da Silva et al. found that in early-stage TNBC, the clinicopathological and demographic features of the HER2-low subgroup did not differ significantly from those of the HER2-zero subgroup. Similarly, no significant differences were found in the recurrence-free survival (RFS), event-free survival (EFS), or OS between these subgroups [38]. No significant differences were noted in clinicopathological factors between HER-low and HER2-zero TNBC tumors.

Abbasvandi et al. reported that HER2-low females revealed the highest DFS and OS among the entire patient cohort. The differences in survival outcomes were significant between the HER2-low and HER2-positive groups and not statistically significant between HER2-low and HER2-negative patients [13]. HER2 IHC 2+/ISH negative breast cancers had substantially better DFS versus HER2-negative patients. Nevertheless, no differences in DFS were reported between HER2-low IHC 1+ and HER2-negative tumors [13]. In contrast, other analyses showed that HER2-low IHC2+/ISH negative early-stage BC had worse DFS compared to HER2 IHC 0 or 1+ patients [20,21]. Additionally, worse DFS was reported in subjects with HER2-low status and lobular breast cancer versus HER2 -negative tumors [10].

Molinelli et al. conducted a systemic literature review to determine research comparing survival outcomes in breast cancer patients with HER2-low status versus HER2-0 status [39]. HER2-low status appeared to be linked to a slightly improved OS in both the advanced and early breast cancer, irrespective of hormone receptor expression, when compared to HER2-zero status. In early-stage breast cancer, HER2-low status was related to significantly better DFS (HR 0.86, 95% CI 0.79-0.92, $P < 0.001$) and OS (HR 0.90, 95% CI 0.85-0.95, $P < 0.001$) versus HER2-zero status. Better OS was observed in both hormone receptor-positive and hormone receptor-negative HER2-low subgroups, with higher disease-free survival (DFS) found only in the hormone receptor-positive group. HER2-low status was significantly associated with a lower rate of pathological complete response (pCR) compared to HER2-zero status, both in the overall population (OR 0.74, 95% CI 0.62-0.88, $P = 0.001$) and in the hormone receptor-positive subgroup (OR 0.77, 95% CI 0.65-0.90, P

= 0.001). In metastatic breast cancer, patients with HER2-low tumors had better OS compared to those with HER2-zero tumors in the overall population (HR 0.94, 95% CI 0.89-0.98, $P = 0.008$), regardless of hormone receptor status, although no significant differences in progression-free survival (PFS) were observed. [39]. Yang et al. found that low HER2 expression was related to a prolonged recurrence-free interval (RFI) in breast cancer patients, especially in HR-positive breast cancer patients ($P = 0.028$) and <65-year-old breast cancer patients ($P = 0.000$) [16]. In early-stage TNBC, HER2-low expression was linked to improved breast cancer-specific survival (BCSS) than those with the HER2-0 status (96.6% vs. 93.7%; log-rank $P = 0.027$). Among stage III patients, both BCSS and OS were better in the HER2-low subgroup versus the HER2-0 subgroup (BCSS, log-rank $P = 0.010$; OS, log-rank $P = 0.047$), though no similar results were observed in patients with stages I and II [40]. Zattarin et al. showed that HER2-low status was related to worse PFS and OS in patients with HR-positive/HER2-negative advanced breast cancer (aBC) treated with first-line endocrine therapy plus CDK4/6i [41]. In another study, the risk of progression and/or death was greater in patients with HER2-low tumors compared to those with HER2-zero tumors (HR: 1.22, 95% CI 1.10–1.35, $P < 0.001$). A combined analysis of several studies indicated that the risk of death was also higher in the HER2-low group compared to the HER2-zero group (HR: 1.22, 95% CI 1.04–1.44, $P = 0.010$) [42]. However, in a study conducted by Yang et al, no significant differences were found between HER2-0 and HER2-low group in either DFS or DDFS [30]. A landmark analysis indicated that patients with HR-positive/HER2-low tumors had better DFS compared to the HR-positive/HER2-zero subgroup after 5 years. HER2-low expression was identified as an independent prognostic factor for DFS following 5 years, with a 69% reduced risk compared to HER2-zero expression (HR 0.31, 95% CI 0.13–0.75, $P = 0.01$). However, similar outcomes were not observed in terms of OS for HR-positive patients. No significant differences in DFS or OS were reported between patients with HER2-zero or HER2-low tumors regardless of HR status [43]. **Sato et al. revealed that the overall survival was significantly better in HER2-low than in HER2-negative patients. However, multivariate logistic regression analyses showed that HER2-low status was not an independent factor for OS [28]. Another study demonstrated that**

HER2-low breast cancer patients had better DFS, OS and BCSS in comparison with HER2-0 cases. Notably, survival outcomes varied by menopausal status: BCSS benefited premenopausal patients, while DFS and OS showed greater benefits for postmenopausal patients [44].

In a study by Liu et al., the HER2-0 group exhibited improved DFS compared to the HER2-low group across the entire population ($P = 0.003$), as well as lymph node-negative ($P = 0.009$) and HR-positive ($P = 0.007$) subgroups. Multivariate regression analysis revealed that low HER2 expression was an independent negative prognostic factor for DFS in the HER2-negative population with early-stage breast cancer (HR 1.33; 95% CI, 1.06-1.66; $P = 0.013$). The differences in DFS observed in the overall, lymph node-negative and HR positive subgroups indicate that HER2-low status may serve as a poorer prognostic indicator for disease progression in early-stage breast cancer [15]. Many studies evaluating the prognostic value of HER2-low expression in breast cancer, both in early-stage and metastatic disease, have not identified a significant difference in OS between HER2-low and HER2-0 tumors [12, 14, 19, 37, 45]. Therefore, the Expert Consensus Statements by the European Society for Medical Oncology (ESMO) suggest that prognostic value of HER2-low expression (IHC 1+ or 2+/ISH-negative) remains insufficient [36].

In our study, no significant differences in OS were found between subjects with HER2-low status and HER2-zero. However, subgroup analysis showed that patients with ER-negative receptor status (ER-) and HER2-low status had worse OS compared to those with the HER2-zero status and ER negative receptor status. Additionally, a trend toward worse OS was noted in HER2-low status patients with higher tumor stages (T3-4) and higher histological grades (G3). There were no differences in OS between subjects with HER2-low1+ tumors and those with HER2-low 2+/(ISH-).

Conclusion.

HER2-low status was linked to HR-positivity. Both subgroups of HER2-low tumors (HER2-low1+ vs. HER2-low IHC 2+ with negative ISH) exhibited positive HR receptor status. *CHEK2* pathogenic or likely pathogenic variants were found in females with HER2-low2+/ISH(-). There was no significant association between the HER2-low subgroups (HER2-low1+ vs. HER2-low IHC

2+ with negative ISH) and factors such as *BRCA* gene mutations, tumor size, N+, G and hormone receptor status. However, HER2-low status was related to worse OS in subgroups of patients with negative prognostic factors compared to patients with HER2-zero status. Specifically, HER2-low1+ status was linked to worse OS in subgroups with negative prognostic factors, such as G3, T3-T4, PR-, HR-, compared to patients with HER2-low2+/ISH(-) tumors.

FUNDING: This study did not receive any specific funding from public, commercial, or not-for-profit organizations.

Declaration of competing interest: The authors declare that they have no known financial conflicts of interest or personal relationships that could have influenced the work presented in this paper.

References:

1. Slamon DJ, Clark GM, Wong SG, Levin WJ, Ullrich A, McGuire WL. Human breast cancer: correlation of relapse and survival with amplification of the HER-2/neu oncogene. *Science*. 1987;235(4785):177-82. doi: 10.1126/science.3798106.
2. Slamon DJ, Leyland-Jones B, Shak S, Fuchs H, Paton V, Bajamonde A, et al. Use of chemotherapy plus a monoclonal antibody against HER2 for metastatic breast cancer that overexpresses HER2. *N Engl J Med*. 2001;344(11):783–792. doi:10.1056/NEJM200103153441101
3. Swain SM, Miles D, Kim SB, Young-Hyuck Im, Seock-Ah Im, Semiglazov V et al. Pertuzumab, trastuzumab, and docetaxel for HER2-positive metastatic breast cancer (CLEOPATRA): end-of-study results from a double-blind, randomised, placebo-controlled, phase 3 study. *Lancet Oncol*. 2020;21(4):519–530. doi:10.1016/S1470-2045(19)30863-0
4. Cameron D, Piccart-Gebhart MJ, Gelber RD, Procter M, Goldhirsch A, de Azambuja E et al. 11 years' follow-up of trastuzumab after adjuvant chemotherapy in HER2-positive early

- breast cancer: final analysis of the HERceptin Adjuvant (HERA) trial. *Lancet*. 2017;389(10075):1195–1205. doi:10.1016/S0140-6736(16) 32616-2
5. Perou CM, Sørlie T, Eisen MB, van de Rijn M, Jeffrey SS, Rees CA, et al. Molecular Portraits of Human Breast Tumours. *Nature*. 2000; 406 (6797):747–52. doi: 10.1038/35021093.
 6. Wolff AC, Hammond MEH, Allison KH, Harvey BE, Mangu PB, Bartlett JMS et al. Human Epidermal Growth Factor Receptor 2 Testing in Breast Cancer: American Society of Clinical Oncology/College of American Pathologists Clinical Practice Guideline Focused Update. *Arch. Pathol. Lab. Med.* 2018; 142, 1364–1382.
 7. Antonio C, Wolff M, Elizabeth H, et al. Recommendations for human epidermal growth factor receptor 2 testing in breast cancer: american society of clinical Oncology/College of american pathologists clinical practice guideline update. *Arch Pathol Lab Med.* 2014;138(2):241–56. <https://doi.org/10.5858/arpa.2013-0953-SA>.
 8. Zhang H, Peng Y. Current Biological, Pathological and Clinical Landscape of HER2-Low Breast Cancer. *Cancers (Basel)*. 2022; 25;15(1):126. doi: 10.3390/cancers15010126.
 9. Tarantino P, Hamilton E, Tolaney SM, Cortes J, Morganti S, Ferraro E et al. HER2-Low Breast Cancer: Pathological and Clinical Landscape. *J Clin Oncol*. 2020; 10;38(17):1951-1962. doi: 10.1200/JCO.19.02488. Epub 2020 Apr 24.
 10. Petrelli F, Rea C, Parati MCh, Borgonovo K, Ghilardi M, Dottorini L et al. Prognostic Value of HER2-low Status in ER+ Early Breast Cancer: A Systematic Review and Meta-Analysis. *Anticancer Res.* 2023;43(10):4303-4313. doi: 10.21873/anticanres.16625.
 11. Fehrenbacher L, Cecchini RS, Geyer CE Jr, Rastogi P, Costantino JP, Atkins JN et al. NSABP B-47/NRG Oncology Phase III Randomized Trial Comparing Adjuvant Chemotherapy With or Without Trastuzumab in High-Risk Invasive Breast Cancer Negative for HER2 by FISH and With IHC 1+ or 2+. *J. Clin. Oncol.* 2019; 38, 444–453.
 12. Denkert C, Seither F, Schneeweiss A, Link T, Blohmer JU, Just M et al. Clinical and molecular characteristics of HER2-low-positive breast cancer: pooled analysis of individual

- patient data from four prospective, neoadjuvant clinical trials. *Lancet Oncol.* 2021;22(8):1151-1161. doi: 10.1016/S1470-2045(21)00301-6. Epub 2021 Jul 9.
13. Abbasvandi F, Bayat M, Akbari A, Shojaeian F, Zandi A, Rahmani J et al. Tumor characteristics and survival rate of HER2-low breast cancer patients: a retrospective cohort study. *Scientific Reports.* 2023; 13:16719
 14. Agostinetto E, Rediti M, Fimereli D, Debien V, Piccart M, Aftimos P et al. HER2-Low Breast Cancer: Molecular Characteristics and Prognosis. *Cancers.* 2021; 13, 2824. <https://doi.org/10.3390/cancers13112824> .
 15. Liu ChG, Li Y, Ma T, Lv M, Lv ZD, Wang YY et al. Clinicopathological characteristics and prognosis of early-stage HER2 low-expression breast cancer: A single-center retrospective study. *Front Oncol.* 2023;13:1130734. doi: 10.3389/fonc.2023.1130734.
 16. Yang X, Li Y, lu X, Ren X, Hua B et al. Clinicopathological features and prognosis of patients with HER2-low breast cancer. *BMC Cancer.* 2023; 23:914.
 17. Hein A, Hartkopf AD, Emons J, Lux MP, Volz B, Taran FA et al. Prognostic effect of low-level HER2 expression in patients with clinically negative HER2 status. *Eur J Cancer.* 2021; 155:1-12. doi: 10.1016/j.ejca.2021.06.033. Epub 2021 Jul 23.
 18. Tan RSYC, Ong W S, Lee KH, Lim AH, Park S, Park YH et al. HER2 expression, copy number variation and survival outcomes in HER2-low non-metastatic breast cancer: an international multicentre cohort study and TCGA-METABRIC analysis. *BMC Medicine.* 2022; **20**: 105.
 19. Horisawa N, Adachi Y, Takatsuka D, Nozawa K, Endo Y, Ozaki Yet al. The frequency of low HER2 expression in breast cancer and a comparison of prognosis between patients with HER2-low and HER2-negative breast cancer by HR status. *Breast Cancer.* 2022;29(2):234-241. doi: 10.1007/s12282-021-01303-3. Epub 2021 Oct 7.
 20. Ignatov, T. Eggemann H, Burger E, Fettke F, Dan Costa S, Ignatov A et al. Moderate level of HER2 expression and its prognostic significance in breast cancer with intermediate grade. *Breast Cancer.* 2015; Res. Treat. 151, 357–364.

21. Rossi V, Sarotto I, Maggiorotto F, Berchialla P, Kubatzki F, Tomasi N et al. Moderate immunohistochemical expression of HER-2 (2+) without HER-2 gene amplification is a negative prognostic factor in early breast cancer. *Oncologist*. 2012; 17, 1418–1425.
22. Allison KH, Hammond EH, Dowsett M, McKernin SE, Carey LA, Fitzgibbons PL et al. Estrogen and Progesterone Receptor Testing in Breast Cancer: American Society of Clinical Oncology/College of American Pathologists Guideline Update. *Archives of Pathology & Laboratory*. 2020; *Medicine* 144(5) Follow journal. <https://doi.org/10.5858/arpa.2019-0904-SA>
23. Modi, S. Park H, Murthy RK, Iwata H, Tamura K, Tsurutani J et al. Antitumor activity and safety of trastuzumab deruxtecan in patients with HER2-low-expressing advanced breast cancer: Results from a phase Ib study. *J. Clin. Oncol.* 2020; 38, 1887.
24. Giuliani S, Ciniselli ChM, Leonardi E, Polla E, Decarli N, Luchini C et al. In a cohort of breast cancer screened patients the proportion of HER2 positive cases is lower than that earlier reported and pathological characteristics differ between HER2 3+ and HER2 2+/Her2 amplified cases. *Virchows Arch.* 2016; 469, 45–50.
25. Denkert, C. Seither F, Schneeweiss A, Link T, Blohmer JU, Just M et al. Clinical and molecular characteristics of HER2-low-positive breast cancer: Pooled analysis of individual patient data from four prospective, neoadjuvant clinical trials. *Lancet Oncol.* 2021; 22, 1151–1161.
26. Miglietta, F. Griguolo G, Bottosso M, Giarratano T, Mele ML, Fassan M et al. Evolution of HER2-low expression from primary to recurrent breast cancer. *NPJ Breast Cancer.* 2021;7, 1–8.
27. **Khalil MA, Habibian L, Martin Ch, Semaan K, Khaddage A, Kassis NE, et al. Landscape of HER2-low breast cancer: Insights from a six-year study on prevalence and clinicopathological characteristics. *Annals of Diagnostic Pathology.* 2024; 72:152326. doi: 10.1016/j.anndiagpath.2024.152326. Epub 2024 May 12.**

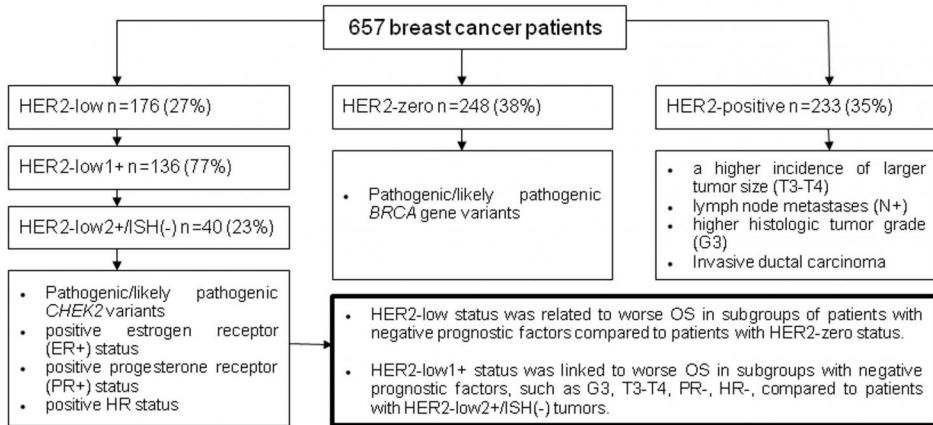
28. [Sato A, Maeda Y, Matsumoto A, Ikeda T, Jinno H](#). Clinicopathological features and prognosis of breast cancer with low HER2 status evaluated by fluorescence in situ hybridization. *Oncology Letter*. 2025; 6;29(2):92. doi: 10.3892/ol.2024.14838. eCollection 2025 Feb.
29. [Bergeron A, Bertaut A, Beltjens F, Charon-Barra C, Amet A](#) et al. [Clémentine Jankowski](#) Anticipating changes in the HER2 status of breast tumours with disease progression—towards better treatment decisions in the new era of HER2-low breast cancers. *British Journal of Cancer*. 2023;129(1):122-134. doi: 10.1038/s41416-023-02287-x. Epub 2023 Apr 29
30. Yang M, Sun J, Liu L, Kong X, Lin D, Zhou H et al. Clinicopathological characteristics of HER2-low breast cancer: a retrospective study. *Scientific Reports*. 2023; 13:12382.
31. Li Y, Tsang JY, Tam F, [Loong T](#), [Tse GM](#). Comprehensive characterization of HER2-low breast cancers: implications in prognosis and treatment. *EbioMedicine*. 2023;91: 104571.
32. de Nonneville A, Houvenaeghel G, Cohen M, Sabiani L, Bannier M, Viret F et al. Pathological complete response rate and disease-free survival after neoadjuvant chemotherapy in patients with HER2-low and HER2-0 breast cancers. *Eur J Cancer*. 2022;176:181-188. doi: 10.1016/j.ejca.2022.09.017. Epub 2022 Sep 28.
33. Zhang H, Katerji H, Turner BM, [Audeh W](#), [Hicks DG](#) et al. HER2-low breast cancers: incidence, HER2 staining patterns, clinicopathological features, MammaPrint and BluePrint genomic profiles. *Mol Pathol*. 2022;35(8): 1075-1082.
34. Schettini F, Braso-Maristany F, Kuderer NM, [Prat A](#). A perspective on the development and lack of interchangeability of the breast cancer intrinsic subtypes. *NPJ Breast Cancer*. 2022; 8(1).
35. [Ignatov A, Lempfer S, Mészáros J, Eggemann H](#). [Prognostic Impact of HER2 Low Status in Male Breast Cancer: Prospective Cohort Analysis](#). *Cancers (Basel)*. 2024; 5;16(19):3399. doi: 10.3390/cancers16193399

36. [Tarantino P](#), [Viale G](#), [Press MF](#), [Hu X](#), [Penault-Llorca F](#), [Bardia A](#) et al. ESMO expert consensus statements (ECS) on the definition, diagnosis, and management of HER2-low breast cancer. *Ann Oncol*. 2023;34(8):645-659. doi: 10.1016/j.annonc. 2023. 05.008. Epub 2023 Jun 1.
37. [Won HS](#), [Ahn J](#), [Kim Y](#), [Kim JS](#), [Song JY](#), [Kim HK](#) et al. Clinical significance of HER2-low expression in early breast cancer: a nationwide study from the Korean Breast Cancer Society. *Breast Cancer Res*. 2022;21;24(1):22. doi: 10.1186/s13058-022-01519-x.
38. [da Silva JL](#), [de Souza Carvalho G](#), [de Albuquerque LZ](#), [Rodrigues FR](#), [Fernandes PV](#), [Kischinhevsky D](#) et al. Exploring Real-World HER2-Low Data in Early-Stage Triple-Negative Breast Cancer: Insights and Implications. *Breast Cancer* (Dove Med Press). 2023;8:15:337-347. doi: 10.2147/BCTT.S408743. ECollection 2023.
39. [Molinelli C](#), [Jacobs F](#), [Agostinetti E](#), [Nader-Marta G](#), [Ceppi M](#), [Bruzzone M](#) et al. Prognostic value of HER2-low status in breast cancer: a systematic review and meta-analysis. *ESMO Open*. 2023; vol 8, issue 4.
40. [Ma Y](#), [Jiao D](#), [Zhang J](#), [Lv M](#), [Chen X](#), [Liu Z](#) et al. HER2-Low Status Was Associated With Better Breast Cancer-Specific Survival in Early-Stage Triple-Negative Breast Cancer. *Oncologist*. 2024;4;29(3):e309-e318. Doi: 10.1093/oncolo/oyad275.
41. [Zattarin E](#), [Presti D](#), [Mariani L](#), [Sposetti C](#), [Leporati R](#), [Menichetti A](#), et al. Prognostic significance of HER2-low status in HR-positive/ HER2-negative advanced breast cancer treated with CDK4/6 inhibitors. *Breast Cancer*. 2023; 9:27 ; <https://doi.org/10.1038/s41523-023-00534-1>
42. [Güven DC](#), [Sahin TK](#). The association between HER2-low status and survival in patients with metastatic breast cancer treated with Cyclin-dependent kinases 4 and 6 inhibitors: a systematic review and meta-analysis. *Breast Cancer Res Treat*. 2024;204(3):443-452.doi: 10.1007/s10549-023-07226-1.

43. Xu H, Han Y, Wu Y, Wang Y, Li Q, Zhan P et al. Clinicopathological Characteristics and Prognosis of HER2-Low Early-Stage Breast Cancer: A Single-Institution Experience. *Frontiers in Oncology*. 2022; 12, 202, 1-11
44. Park WK, Nam SJ, Kim SW, Lee JF, Yu J, Ryu JM et al. The Impact of HER2-Low Expression on Oncologic Outcomes in Hormone Receptor-Positive Breast Cancer. *Cancers (Basel)*. 2023;10;15(22):5361. doi: 10.3390/cancers 15225361.
45. Şen GA, Aydın E, Guliyev M, Öztaş NS, Değerli E, Demirci NS et al. The impact of HER2-low status on pathological complete response and disease-free survival in early-stage breast cancer. *BMC Cancer*. 2024; 24:1311.

Preprint

HER2-Low Status in Breast Cancer: Clinicopathological Factors and Prognostic Value



Preprint

Table I. Patients characteristics and comparison of subgroups according to clinicopathological factors.

	HER2-zero (N=248 (100%))	HER2-low (N=176 (100%))	HER2-positive (N=233 (100%))	P-value	HER2-zero vs HER2- low P-value *	HER2-low vs HER2- positive P-value *
Age (years) (mean ± std dev)	51.2±10.98	52.4±11.12	52.2±10.53	0.485	0.825	0.514
Family history of cancer	113 (45.6%)	72 (40.9%)	102 (43.8%)	0.637	1.00	0.921
Co-morbid condition	77 (31.0%)	71 (40.3%)	80 (34.3%)	0.141	0.151	0.325
Postmenopausal status	118 (47.6%)	87 (49.4%)	116 (49.8%)	0.889	1.00	1.000
Tumor size T3-T4	41 (16.5%)	29 (16.5%)	53 (23.2%)	0.157	1.00	0.202
Lymph nodes N+	82 (33.1%)	58 (33.0%)	129 (55.4%)	<0.001	1.00	0.000
Histologic tumor grade G3	77 (31.0%)	47 (26.7%)	96 (41.2%)	0.005	0.386	0.002
Estrogen receptor positive ER+	147 (59.3%)	141 (80.1%)	149 (63.9%)	<0.001	<0.001	0.001
Progesterone receptor positive PR+	137 (55.2%)	134 (76.1%)	127 (54.5%)	<0.001	<0.001	<0.001
Hormone receptor positive HR+	154 (62.1%)	145 (82.4%)	149 (63.9%)	<0.001	<0.001	<0.001
BRCA mutation	37 (14.9%)	24 (13.6%)	2 (0.9%)	<0.001	0.780	<0.001
CHEK2	17 (6.9%)	16 (9.1%)	8 (3.4%)	0.050	0.463	0.058
Ca ductal	175 (70.6%)	126 (71.6%)	196 (84.1%)	<0.001	0.825	0.003
lobular	34 (13.7%)	23 (13.1%)	10 (4.3%)			
others	39 (15.7%)	27 (15.3%)	27 (11.6%)			

* Benjamin and Hochberg correction for multiple testing

Table II. Comparison HER2-low1+ tumors with HER2-low2+/ISH(-) breast cancer.

	HER2-low1+ N=136 (100%)	HER2-low2+/ISH(-) N=40 (100%)	P-value *
Age (years) (mean \pm std dev)	52.5 \pm 11.0	52.3 \pm 11.6	1.00
Family history of cancer	55 (40.4%)	17 (42.5%)	1.00
Co-morbid condition	58 (42.6%)	13 (32.5%)	0.552
Postmenopausal status	65 (47.8%)	22 (55.0%)	1.00
Tumor size T3-T4	23 (16.9%)	6 (15.0%)	1.00
Lymph nodes N+	47 (34.6%)	11 (27.5%)	0.674
Histologic tumor grade G3	37 (27.2%)	10 (25.0%)	0.842
Estrogen receptor positive ER+	110 (80.9%)	31 (77.5%)	0.655
Progesterone receptor positive PR+	101 (74.3%)	33 (82.5%)	0.478
Hormone receptor positive HR+	112 (82.4%)	33 (82.5%)	1.00
BRCA mutation	22 (16.2%)	2 (5.0%)	0.169
CHEK2	8 (5.9%)	8 (20.0%)	0.034

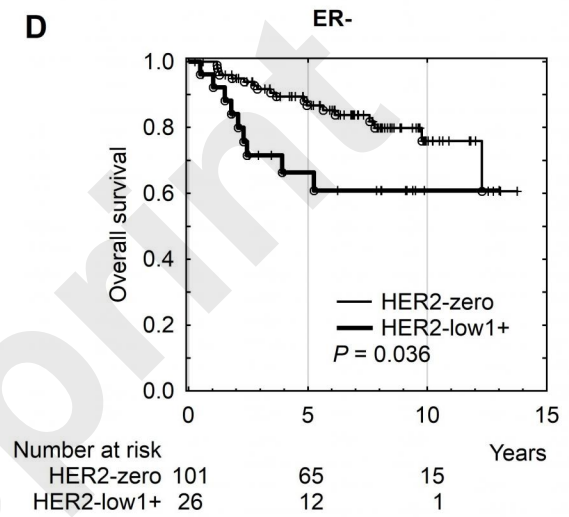
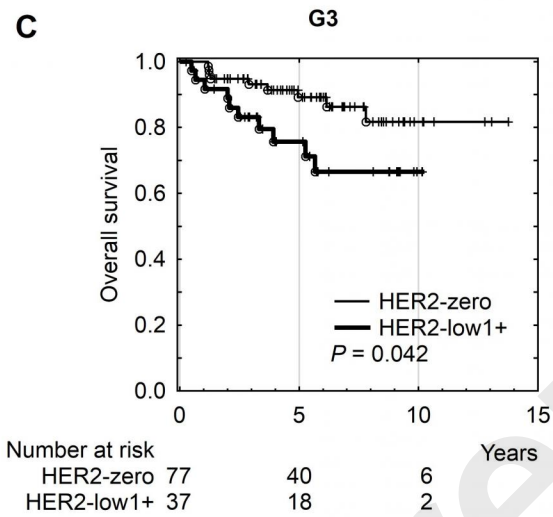
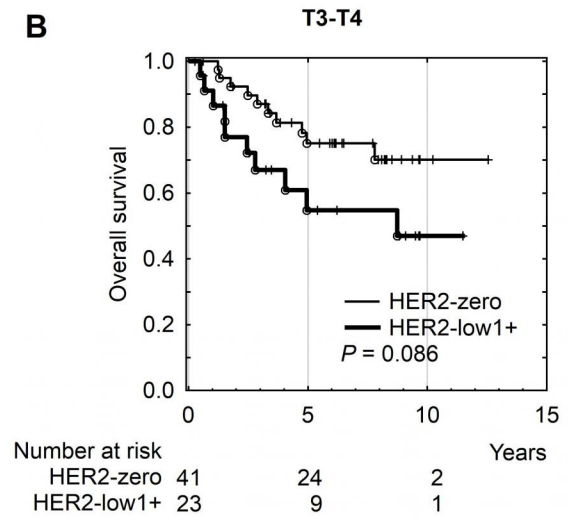
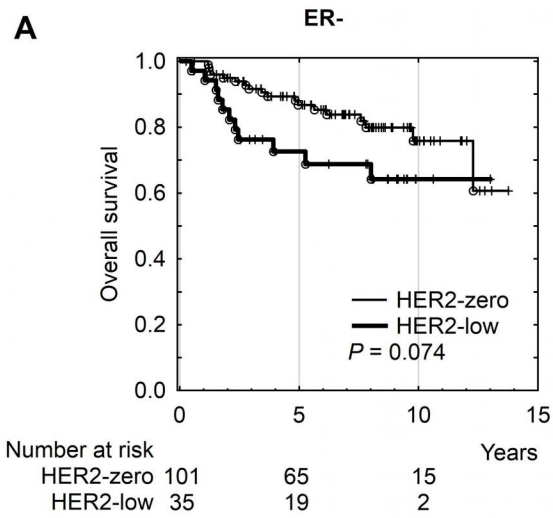
* Benjamin and Hochberg correction for multiple testing

Preprint

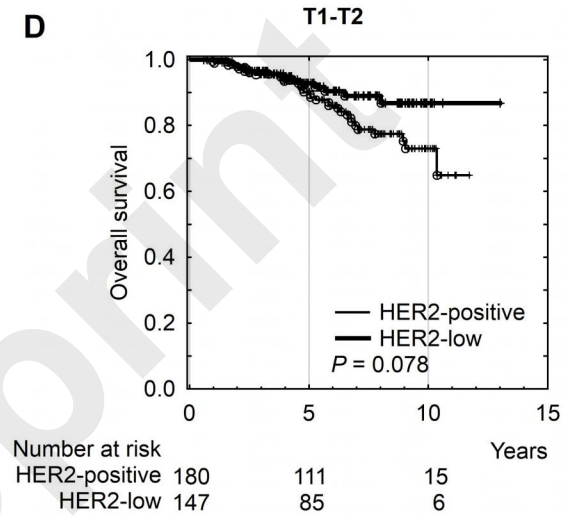
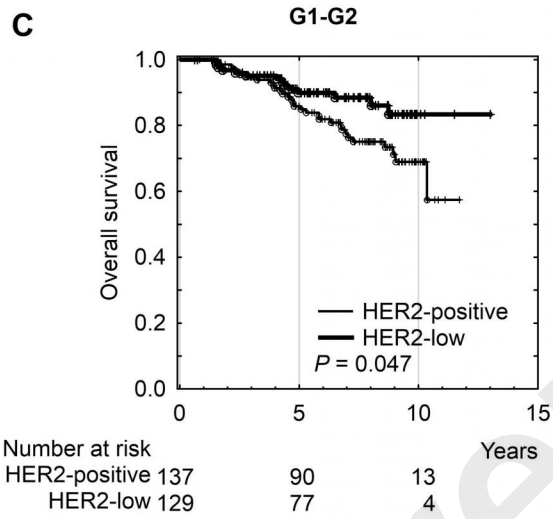
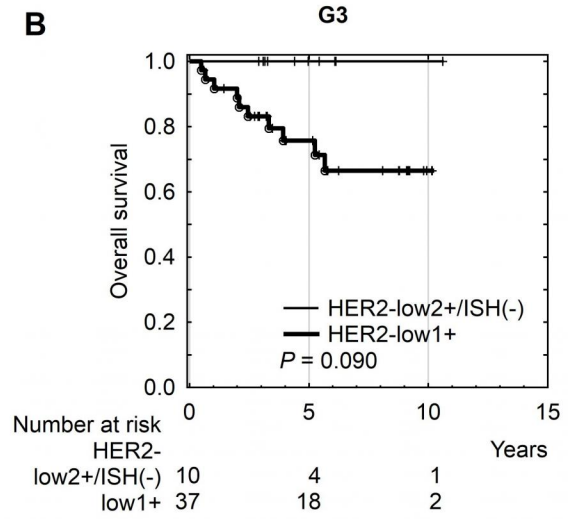
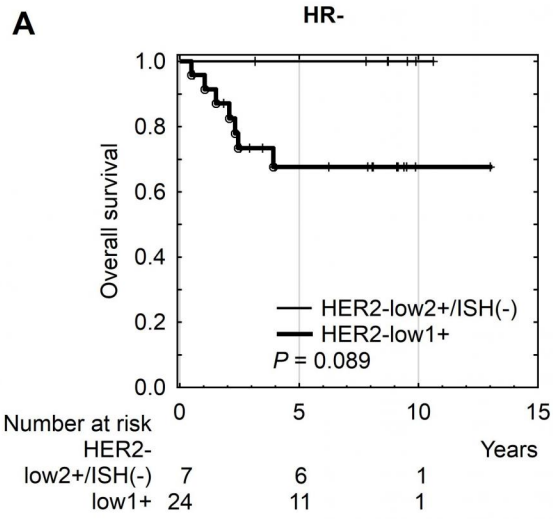
Table III. Univariate and multivariate analysis.

	Univariate analysis		Multivariate analysis	
	Hazard Ratio (95% CI)	P-value	Hazard Ratio (95% CI)	P-value
Age >60 vs <60	1.69 (1.13-2.53)	0.010	1.93 (1.29-2.90)	0.001
Family history of cancer Yes vs No	0.97 (0.65-1.45)	0.884		
Co-morbid condition Yes vs No	0.96 (0.63-1.46)	0.858		
Menopausal status post vs pre	1.15 (0.78-1.68)	0.482		
T stage (T3/4 vs T1/2)	2.77 (1.86-4.13)	<0.001	2.11 (1.38-3.24)	0.001
N stage (N1/2/3 vs N0)	2.45 (1.65-3.64)	<0.001	2.47 (1.63-3.76)	<0.001
G (G3 vs G1-G2)	1.27 (0.85-1.91)	0.245		
ER (positive vs negative)	0.5 (0.34-0.73)	<0.001	0.31 (0.16-0.60)	<0.001
PR (positive vs negative)	0.65 (0.45-0.96)	0.031	2.06 (1.07-3.99)	0.032
BRCA mutation Yes vs No	1.65 (0.97-2.82)	0.065	1.68 (0.92-3.08)	0.091
<i>CHEK2</i> mutation Yes vs No	0.93 (0.41-2.12)	0.860		
Histological type	Reference		Reference	
IDC invasive ductal carcinoma				
ILC invasive lobular carcinoma	0.58 (0.27-1.26)	0.115	0.65 (0.29-1.43)	0.224
Others	1.21 (0.70-2.09)	0.158	1.15 (0.65-2.01)	0.289
HER2 zero	Reference		Reference	
HER2 low	1.1 (0.65-1.87)	0.559	1.14 (0.66-1.95)	0.927
HER2 positive	1.6 (1.03-2.50)	0.033	1.35 (0.83-2.20)	0.280

CI confidence interval



Overall survival outcomes in breast cancer patients according to HER2 status: HER2-zero vs. HER2-low (A) and HER2-zero vs. HER2-low1+ (B,C,D).



Overall survival outcomes in breast cancer patients according to HER2 status: HER2-low2+/ISH(-) vs. HER2-low1+ (A-B) and HER2-positive vs. HER2-low (C-D).