

A 360° Perspective on Cardiovascular Prevention: the International Lipid Expert Panel SiMple tIps for the heaLthy hEart (ILEP-SMILE)

Keywords

alcohol consumption, cardiovascular risk factors, diet, education, exercise, ILEP-SMILE, lipid disorders, sleep disturbances

Abstract

Despite decades of research into lifestyle factors and medications, we still cannot effectively prevent the occurrence of ASCVD and its complications. Yet, only a small percentage of the healthcare budget is allocated to prevention, and only a few nations have introduced integrated programmes in primary prevention to promote health education, invest in health as early as possible, and prevent CVD events. The ILEP SiMple tIps for the heaLthy hEart (ILEP-SMILE) responds to this significant ineffectiveness by offering the most comprehensive population approach, including early, effective education, improvement of all recognised risk factors, alongside those that remain frequently unmeasured, such as lipoprotein(a), those often overlooked such as sleep disturbances and alcohol consumption, and the challenging aspect of stress, and its effect on cardiovascular health. Finally, ILEP-SMILE places considerable emphasis on adherence as a result of education; without it, even efficient lifestyle changes and innovative drugs may not yield the expected outcomes.

Preprint

A 360° Perspective on Cardiovascular Prevention: the International Lipid Expert Panel SiMple tips for the heaLthy hEart (ILEP-SMILE)

Maciej Banach^{1,2,3*}, Federica Fogacci⁴, Atanas G. Atanasov^{5,6,7}, Anca Pantea Stoian⁸, Jacek Józwiak⁹, Ibadete Bytyçi^{10,11,12}, Ivan Pećin^{13,14}, Niki Katsiki^{15,16}, Mohsen Mazidi¹⁷, Ioanna Gouni-Berthold¹⁸, Peter E. Penson^{19,20}, Dan Gaita²¹, Arrigo F.G. Cicero^{4,22*},
on behalf of the International Lipid Expert Panel (ILEP)

Drs Banach and Cicero contributed equally to this paper.

¹Center for Atherosclerosis and Cardiovascular Diseases Prevention, Collegium Medicum, John Paul II Catholic University of Lublin, Lublin, Poland; ²Department of Preventive Cardiology and Lipidology, Medical University of Lodz (MUL), Lodz, Poland; ³Ciccarone Center for the Prevention of Cardiovascular Disease, Johns Hopkins University School of Medicine, Baltimore, MD, USA; ⁴Hypertension and Cardiovascular Risk Research Unit, Alma Mater Studiorum University of Bologna, Bologna, Italy; ⁵Institute of Genetics and Animal Biotechnology of the Polish Academy of Sciences, Magdalenka, Poland; ⁶Laboratory of Natural Products and Medicinal Chemistry (LNPMC), Center for Global Health Research, Saveetha Medical College and Hospital, Saveetha Institute of Medical and Technical Sciences (SIMATS), Thandalam, Chennai, India; ⁷Ludwig Boltzmann Institute Digital Health and Patient Safety, Medical University of Vienna, Vienna, Austria; ⁸Department of Diabetes, Nutrition and Metabolic Diseases, Carol Davila University of Medicine and Pharmacy, Bucharest, Romania; ⁹Department of Family Medicine and Public Health, Institute of Medical Sciences, University of Opole, Poland; ¹⁰Clinic of Cardiology, University Clinical Centre of Kosovo, Prishtina, Kosovo; ¹¹Department of Public Health and Clinical Medicine, Umeå University, Umeå, Sweden; ¹²Medical Faculty, University of Prishtina, Prishtina, Kosovo; ¹³Department of Internal Medicine, Division of Metabolic Diseases, University Hospital Center Zagreb, Zagreb, Croatia; ¹⁴Department of Internal Medicine, School of Medicine, University of Zagreb, Zagreb, Croatia; ¹⁵Department of Nutritional Sciences and Dietetics, International Hellenic University, Thessaloniki, Greece; ¹⁶School of Medicine, European University Cyprus, Nicosia, Cyprus; ¹⁷Clinical Trial Service Unit, Nuffield Department of Population Health, University of Oxford, Oxford, UK; ¹⁸Center for Endocrinology, Diabetes and Preventive Medicine, University of Cologne, Faculty of Medicine and University Hospital Cologne, Cologne, Germany; ¹⁹School of Pharmacy and Biomolecular Sciences, Liverpool John Moores University, Liverpool, UK; ²⁰Liverpool Centre for Cardiovascular Science (LCCS), Liverpool, UK; ²¹Institute for Cardiovascular Diseases, University of Medicine and Pharmacy Victor Babes, Research Center IBCVTIM, Timisoara, Romania; ²²Cardiovascular Medicine Unit, IRCCS Azienda Ospedaliero-Universitaria di Bologna, Bologna, Italy.

***Corresponding authors:**

Prof. Maciej Banach, Center for Atherosclerosis and Cardiovascular Diseases Prevention, Collegium Medicum, John Paul II Catholic University of Lublin, Lublin, Poland; e-mail: Maciej.banach@kul.pl

Prof. Arrigo F.G. Cicero, Cardiovascular Medicine Unit, IRCCS Azienda Ospedaliero-Universitaria di Bologna, Bologna, Italy; e-mail: arrigo.cicero@unibo.it

ABSTRACT:

Cardiovascular disease (CVD), particularly atherosclerotic cardiovascular disease (ASCVD), is the most common cause of death worldwide. Despite decades of research into lifestyle factors and medications, we still cannot effectively prevent the occurrence of ASCVD or the many incident CVD events and their complications. Yet, in most countries, only a small percentage of the healthcare budget is allocated to (primary) prevention, and only a few nations have introduced effective integrated (coordinated) programmes in primary prevention to promote health education, invest in health as early as possible, and prevent adverse CVD events. The International Lipid Expert Panel Simple tips for the healthy heart (ILEP-SMILE) responds to this significant ineffectiveness by offering the most comprehensive population approach, including early, effective education, improvement of all recognised risk factors, alongside those that remain frequently unmeasured, such as lipoprotein(a), factors which are often overlooked such as sleep disturbances and alcohol consumption, and the challenging aspect of stress, and its effect on cardiovascular health. Finally, ILEP-SMILE places considerable emphasis on adherence as a result of education; without it, even efficient lifestyle changes and the most innovative drugs may not yield the expected outcomes. This is also a loud call to action and international collaboration to jointly address the lifetime burden of cardiovascular disease.

Key words: alcohol consumption, cardiovascular risk factors, diet, education, exercise, ILEP-SMILE, lipid disorders, sleep disturbances.

Cardiovascular burden and the role of lifestyle changes

Cardiovascular disease (CVD) remains the leading cause of mortality globally, accounting for over 20 million deaths annually, with as many as 2/3 of them related to atherosclerotic cardiovascular disease (ASCVD) [1]. Historically, preventive strategies have primarily targeted sedentary behavior, unhealthy diet, obesity, hypertension, diabetes, dyslipidemia, and tobacco smoking. Although these factors constitute a foundational approach, emerging evidence indicates that a more comprehensive and integrated strategy is necessary. Banach *et al.* have recently introduced and illustrated the broader approach required for optimal cardiovascular health promotion, highlighting a multidimensional, lifelong strategy that extends the approach previously recommended by Life's Simple 7 (LS7) and the current Life's Essential 8 (LE8) by the American Heart Association [2-4].

The conventional cardiovascular risk factors remain undeniably crucial. Physical inactivity alone contributes to approximately 6–10% of global coronary heart disease, while the burden of type 2 diabetes accounts for as many as 1 million CVD deaths annually [5]. Moreover, less than 8-9% of the adult population engages in regular everyday exercise, despite the very clear results indicating that exercise is directly associated with the prolongation of life through a reduction in blood pressure, inflammation, oxidative stress, improved lipid profile, endothelial functions, arterial stiffness, and many other risk factors. [6]. The largest meta-analysis on step count also suggested that for those under 60 years of age, having an average of 7 to 13,000 steps per day may result in a 49% reduction in all-cause mortality. Furthermore, the benefits for reduction in cardiovascular and total mortality start as low as 4,000 steps per day (but the more, the better!) [7].

Dietary risks, particularly excessive consumption of saturated fats (SFA), trans-unsaturated fats, and added sugars, significantly contribute to disability-adjusted life years (DALYs) attributed to heart disease [8]. Diet should always be personalised, and numerous data clearly indicate that we should adopt well-balanced high-quality diets like the Mediterranean, Planetary, or Nordic diets, as well as hypolipidaemic diets (with a strong emphasis on both quantity and the transition to polyunsaturated fatty acids [PUFAs]) or simply calorie restriction approaches, such as the Dietary Approaches to Stop Hypertension

(DASH). Restrictive diets should be avoided and only recommended for highly selected populations that might benefit from them for a specific period, allowing them to achieve their goals and learn about healthy nutrition [9,10]. Similarly, poor management of hypertension (still the most important CVD risk factor in relation to the mortality risk) [2] along with pre-diabetes and diabetes continues to be a significant contributor to premature cardiovascular mortality [11]. For the latter, careful monitoring of the micro- and macrovascular complications are essential to ensure early effective treatment [12]. The ongoing obesity pandemic, now recognised as the third most prevalent cardiovascular disease risk factor, alongside overweight issues affecting approximately 60% of the adult population, urgently calls for joint action [13,14].

Sleep disturbances and cardiovascular risk

Nevertheless, the traditional framework overlooks several important dimensions that have recently been recognised as independent risk modifiers [2]. A comprehensive meta-analysis encompassing data from 34 studies and over 1.7 million participants, observed for an average of 11.6 years, broadened the scope of traditional risk factors to include sleep health, which was added in the current LE8. Optimal management across these eight risk domains was associated with a significant 53% reduction in overall cardiovascular risk (HR 0.47; 95%CI 0.39–0.56, $p<0.00001$). This risk reduction was similarly pronounced for coronary heart disease (-56%) and stroke (-48%). Moreover, overall mortality risk was reduced by 46% (0.54; 95%CI 0.43–0.69, $p<0.00001$), with cardiovascular-related mortality reduced by 63% (0.37; 95%CI 0.26–0.52, $p<0.00001$) [15]. These findings, along with an increasing amount of evidence-based medicine regarding the impact of lifestyle changes on cardiovascular health, highlight the need to expand cardiovascular disease (CVD) risk assessment beyond conventional parameters. In particular, sleep duration and quality are now widely recognised as essential components of cardiovascular health. Insufficient sleep (typically less than 6 hours per night) has been associated with a 20–25% heightened risk of incident CVD and a 45% increased risk of coronary heart disease [16]. Meta-analyses confirm a U-shaped relationship between sleep duration and cardiovascular and mortality outcomes. It has been shown that a one-hour increase or decrease in sleep duration is associated with an increased risk of all-cause mortality when referenced to the

mortality associated with 7 hours of sleep duration (by 12% and 7%, respectively). Similar results were observed for coronary heart disease risk; compared with 7 hours of sleep per day, the relative risk of CHD was 11% higher for each one-hour reduction and 7% higher for each one-hour increase [17]. Our analysis also confirmed that longer sleep duration might also have harmful effects on renal function [18]. Cognitive-behavioural therapy for insomnia and digital sleep-tracking technologies represent promising, non-pharmacological interventions that can provide tangible cardiovascular benefits [2,19].

The role of stress in cardiovascular health

To be effective, we cannot, however, overlook other critical components of life and lifestyle improvements that might significantly contribute to risk and undermine all efforts related to well-recognised risk factors. Therefore, we should also consider alcohol consumption, elevated lipoprotein(a), managing stress, and adherence to medicines and lifestyle recommendations [2]. An inseparable aspect of sleep quality is stress. Chronic stress remains an underappreciated yet significant risk factor for cardiovascular disease, with the INTERHEART study identifying psychosocial stress as having a comparable impact on myocardial infarction risk to hypertension or diabetes [20]. The role of chronic stress on the risk of depression and their joint effect on cardiovascular health cannot be also overlooked [20-22]. The physiological underpinnings involve inflammatory and neurohormonal mechanisms, highlighting the importance of integrating stress management strategies—such as mindfulness, exercise, and comprehensive counselling—into effective cardiovascular prevention [21]. However, the clinical quantification and management of stress remain challenging, highlighting the necessity for multidisciplinary intervention approaches. There should also be efforts to standardise the tests for optimal stress assessment and its connection to cardiovascular risk. Currently, standardised methods for stress assessment include questionnaires such as the Perceived Stress Scale (PSS), the Holmes and Rahe Stress Scale (HRSS), and the Occupational Stress Questionnaire (OSQ), as well as physiological measures like heart rate variability (HRV) and salivary cortisol tests [22].

Eliminate alcohol consumption for better cardiovascular health

Alcohol consumption calls for distinct consideration, especially given that the recent Organisation for Economic Cooperation and Development (OECD) Health Statistics 2024 indicate that the mean overall alcohol consumption among the population aged 15 and over in Europe remains very high, at over 10 litres per adult per year, with 11 litres in Poland and 11.9 litres per adult in Latvia [23]. Although moderate alcohol intake was traditionally thought to confer cardiovascular protection, recent comprehensive analyses clearly contradict this assumption. A meta-analysis involving over 600,000 individuals demonstrated increased risks of stroke and hypertension, even at moderate levels of alcohol consumption [24]. Similarly, the Global Burden of Disease (GBD) analysis suggested that any amount of alcohol is harmful, and its use is a major risk factor for the global disease burden, leading to substantial health loss. It found that the risk of all-cause mortality, particularly from cancer, increases with rising levels of consumption, and the level of consumption that minimises health loss is zero [25]. Nonetheless, individual variability, drinking patterns, and the quality of alcoholic beverages may modulate these risks, suggesting that reducing alcohol consumption should be a central focus, particularly for those already at elevated cardiovascular risk. Taking into account the current unfavourable trends in alcohol and alcohol-based beverage consumption, all forthcoming guidelines should unify their recommendations towards completely eliminating alcohol consumption.

Know your lipoprotein(a)

A pivotal advancement in cardiovascular prevention is the recent trend to transition from a short-term (10-year) risk evaluation to a lifetime risk assessment. Tools such as the PREVENT calculator developed by the American Heart Association provide sex-specific, race-neutral lifetime risk projections for adults aged 30 to 79 years [26]. Recognising lifetime risk rather than short-term estimates facilitates early, proactive preventive strategies, significantly enhancing patients' motivation and adherence [27]. This is especially relevant to the genetically predisposed and easily monitored (lifetime) risk factor, such as lipoprotein(a) (Lp(a)), which is six times more atherogenic than LDL cholesterol and is responsible for the significant increased risk of myocardial infarction,

stroke, peripheral artery disease, heart failure, or aortic valve stenosis [28]. Lp(a) should be measured at least once in each person's lifetime, preferably in children and adolescents, to promote lifestyle changes and prevent CVD events in parents and grandparents, thereby effectively reducing the risk of premature CVD events [29,30]. Elevated Lp(a) (>50 mg/dl / >125 nmol/l) significantly modifies CVD risk, increasing and altering the risk category. Additionally, we have the dedicated lifetime calculator, which clearly demonstrates not only how the risk increases but also how effectively we can modulate this by optimising the treatment of other CVD risk factors (<https://www.lpaclinicalguidance.com>) [29]. The introduction of Lp(a) into the ILEP Simple Tips for the Healthy Heart also serves a strong educational role and addresses the significant ineffectiveness in Lp(a) measurement, as only a small percentage of patients, even those at high risk of CVD, know their Lp(a) levels [2,28]. It is worth mentioning that Poland has recently implemented the first universal screening of Lp(a) within the "My Health" programme of the Ministry of Health, for all individuals aged 20 and over.

Education and adherence – we cannot achieve effective prevention without them.

Ultimately, lifestyle changes and effective CVD prevention can only be successful if supported by good health education, which consequently leads to the optimal implementation of lifestyle changes and adherence to therapy. [31]. We have accumulated sufficient data indicating that without a good education, only a small percentage of the population—those most aware—will be inclined to invest in their health as early as possible (when they are still healthy and asymptomatic). This involves continuously optimising and adapting their lifestyle, participating in health screening programmes, regularly monitoring their health, and being compliant and adherent to therapy. [31-33]. We have outstanding examples of effective education, with the best referring to the programmes introduced by Prof. Valentin Fuster for school and preschool children (the FAMILIA projects, the SI! Program). [34,35]. Attempts to introduce school Health Education subjects have already been made in other countries, including Poland (starting as a subject from 1st September 2025). Even with the best programmes and the most innovative therapies, we may still fail in CVD prevention due to nonadherence, which is an independent CVD risk factor. In the case of statin therapy, nonadherence may increase

the risk of all-cause mortality by 45% [36,37]. Education – for example, through the ILEP – Personalised Lipid Intervention Plan (PLIP) - may effectively overcome the nocebo/drucebo effect and make patients more inclined to use statin therapy. [38].

The ILEP-SMILE approach

Figure 1 effectively synthesises traditional factors (diet, exercise, smoking) with previously overlooked elements: sleep hygiene, alcohol moderation, stress management, patient education, and routine risk measurement, including at least one lifetime assessment of Lp(a) plasma levels. This comprehensive model reflects an evolved understanding of cardiovascular risk as cumulative, multifactorial, and modifiable across an individual's lifespan, highlighting patient engagement and adherence as fundamental to long-term success. Educational interventions enhancing health literacy have demonstrated the potential to reduce cardiovascular events by up to 20% in high-risk groups [39], while medication adherence, particularly to statins, remains a significant challenge, with nearly 50% discontinuation within one year [40]. The detailed ILEP-SMILE algorithm, along with the specific recommendations, is presented in Figure 2. The abbreviation SMILE is also not coincidental—by addressing all 12 points comprehensively, we can practically guarantee a long and high-quality life without any cardiovascular issues events.

Digital health innovations, such as step counters, dietary tracking apps, and HRV and sleep monitors, ideally supported by proper education, demonstrate potential in encouraging physical activity, enhancing nutritional awareness, and enabling early detection of cardiovascular anomalies. [41,42]. Integrating these digital solutions into clinical workflows enhances patient-provider communication and individualises preventive strategies. They are already and will soon commonly be completed with AI-based tools that assist, for example, based on imaging methods, not only to diagnose very early atherosclerosis (with soft atheroma plaques) but also to monitor its volume, morphology, and artery lumen, clearly demonstrating and further motivating patients that their efforts associated with lifestyle changes and therapy adherence translate into specific health effects [43].

Beyond primary and secondary prevention, primordial prevention (preventing the initial development of risk factors) and tertiary prevention (reducing disability and the recurrence of events) are also vital. Encouraging healthy behaviours from childhood through community education and public policy can lead to significant long-term benefits. [44]. Likewise, incorporating intensive lifestyle management into rehabilitation programmes for post-myocardial infarction or stroke significantly reduces the occurrence of recurrent cardiovascular events. [45].

Take home message and conclusions

Despite significant advances [2], several challenges remain. Optimal dietary recommendations, such as Mediterranean, DASH, or Planetary Health Diets, must accommodate local cultural and socioeconomic factors that influence adherence. In many countries, we also need to advocate for systemic healthcare changes and the regulation of the dietitian profession. Additionally, analyses that focus on one component of the diet at a single timepoint and/or short-term study endpoints complicate the assessment of long-term atherosclerosis progression [46,47]. Current clinical guidelines still inadequately incorporate emerging risk factors such as sleep, stress, alcohol, and issues of compliance, persistence, and nonadherence. Implementation science should now prioritise integrating these expanded risk assessments into routine clinical practice, ensuring that digital health tools remain accessible to mitigate health inequities. In conclusion, cardiovascular prevention must transition from a linear, risk-factor checklist to an integrated, dynamic model. A comprehensive, 360-degree approach within the suggested the ILEP Simple Tips for the Healthy Heart (ILEP-SMILE) incorporates not only traditional factors (diet, exercise, smoking cessation) but also sleep hygiene, stress management, alcohol moderation, lifelong risk assessment, and extensive education of patients. Only by embracing this holistic framework can we substantially mitigate the global cardiovascular disease burden more effectively and, in the consequence, effectively fight with this largest worldwide killer.

ACKNOWLEDGMENT:

No medical writer took part in the preparation of this ILEP Expert Opinion statement. No external funding was used in the preparation of this manuscript.

Conflict of Interest: Maciej Banach has received research grant(s)/support from Amgen, Daiichi-Sankyo, Mylan/Viatris, Sanofi, and has received honoraria and/or served as a consultant for Adamed, Amgen, Daiichi-Sankyo, Esperion, Kogen, KRKA, Lilly, MSD, Mylan/Viatris, NewAmsterdam Pharma, Novartis, Novo-Nordisk, Polfarmex, Polpharma, Sanofi-Regeneron, Servier, Teva, and Zentiva; Atanas G. Atanasov is an Advisory Board member of QluPod AG; Anca Pantea Stoian: Advisory boards: Amgen, Astra Zeneca, Eli Lilly, Merck, Medtronic, MSD, Novo Nordisk, Roche Diabetes, Sanofi; Clinical trials: Credance, Reimagine 2, Zeus, Essence; speaker for: Amgen, Astra Zeneca, Boehringer Ingelheim, Eli Lilly, Egis, Coca-Cola, Medtronic, Medochemie, Novo Nordisk, Novartis, Merck, MSD, Servier, Sanofi; Niki Katsiki has served as a consultant and/or received speaker's fees from Amgen, Astra Zeneca, Boehringer Ingelheim, Libytec, Menarini, Mylan/Viatris, Novartis, Novo-Nordisk, Pfizer and Sanofi; Ioanna Gouni-Berthold has served as a consultant and received honoraria from Akcea, Amgen, Berlin-Chemie, Daiichi-Sankyo, Menarini, Novartis, Sanofi-Regeneron, and Ultragenyx; Peter E. Penson owns four shares in AstraZeneca PLC and has received honoraria and/or travel reimbursement for events sponsored by AKCEA, Amgen, AMRYT, Link Medical, Mylan, Napp, and Sanofi; Dan Gaita has received honoraria and/or served as a consultant for Amgen, AstraZeneca, Boehringer Ingelheim, Krka, Eli Lilly, MSD, Viatris, Novartis, Novo-Nordisk, Pfizer, Sanofi, Servier and Zentiva. All other authors declare that they have no potential conflicts of interest that might be relevant to the contents of this manuscript.

REFERENCES:

1. Roth GA, Mensah GA, Johnson CO, Addolorato G, Ammirati E, Baddour LM, et al. Global Burden of Cardiovascular Diseases and Risk Factors, 1990–2019. *J Am Coll Cardiol*. 2020;76(25):2982–3021.
2. Banach M, Toth PP, Bielecka-Dąbrowa A, Lewek J. Primary and secondary cardiovascular prevention: Recent advances. *Kardiol Pol*. 2024;82(12):1200-1210.
3. Hasbani NR, Ligthart S, Brown MR, Heath AS, Bebo A, Ashley KE, Boerwinkle E, Morrison AC, Folsom AR, Aguilar D, de Vries PS. American Heart Association's Life's Simple 7: Lifestyle Recommendations, Polygenic Risk, and Lifetime Risk of Coronary Heart Disease. *Circulation*. 2022 Mar 15;145(11):808-818.
4. Lloyd-Jones DM, Allen NB, Anderson CAM, Black T, Brewer LC, Foraker RE, Grandner MA, Lavretsky H, Perak AM, Sharma G, Rosamond W; American Heart Association. Life's Essential 8: Updating and Enhancing the American Heart Association's Construct of Cardiovascular Health: A Presidential Advisory From the American Heart Association. *Circulation*. 2022 Aug 2;146(5):e18-e43. doi: 10.1161/CIR.0000000000001078.
5. Lee IM, Shiroma EJ, Lobelo F, Puska P, Blair SN, Katzmarzyk PT, et al. Effect of physical inactivity on major non-communicable diseases worldwide: an analysis of burden of disease and life expectancy. *Lancet*. 2012;380(9838):219–229.
6. Katsiki N, Mikhailidis DP, Bajraktari G, Miserez AR, Cicero AFG, Bruckert E, Serban MC, Mirrahimov E, Alnouri F, Reiner Ž, Paragh G, Sahebkar A, Banach M; International Lipid Expert Panel (ILEP). Statin therapy in athletes and patients performing regular intense exercise - Position paper from the International Lipid Expert Panel (ILEP). *Pharmacol Res*. 2020 May;155:104719.
7. Banach M, Lewek J, Surma S, Penson PE, Sahebkar A, Martin SS, Bajraktari G, Henein MY, Reiner Ž, Bielecka-Dąbrowa A, Bytyçi I. The association between daily step count and all-cause and cardiovascular mortality: a meta-analysis. *Eur J Prev Cardiol*. 2023 Dec 21;30(18):1975-1985.
8. GBD 2019 Risk Factors Collaborators. Global burden of 87 risk factors in 204 countries and territories, 1990–2019: a systematic analysis. *Lancet*. 2020;396(10258):1223–1249.
9. Mazidi M, Mikhailidis DP, Sattar N, Toth PP, Judd S, Blaha MJ, Hernandez AV, Penson PE, Banach M; International Lipid Expert Panel (ILEP) & Lipid and Blood Pressure Meta-analysis Collaboration (LBPMC) Group. Association of types of dietary fats and all-cause and cause-specific mortality: A prospective cohort study and meta-analysis of prospective studies with 1,164,029 participants. *Clin Nutr*. 2020 Dec;39(12):3677-3686.
10. Mazidi M, Katsiki N, Mikhailidis DP, Sattar N, Banach M. Lower carbohydrate diets and all-cause and cause-specific mortality: a population-based cohort study and pooling of prospective studies. *Eur Heart J*. 2019 Sep 7;40(34):2870-2879.
11. NCD Risk Factor Collaboration (NCD-RisC). Worldwide trends in hypertension prevalence and progress in treatment and control from 1990 to 2022: a pooled analysis. *Lancet*. 2024;404(10467):2077–2093.
12. Banach M, Surma S, Dzida G, Józwiak J, Okopień B, Rysz J, Szosland K, Grzybowski A. The prevention opportunities of retinopathy in diabetic patients - position paper endorsed by the Polish Lipid Association. *Arch Med Sci*. 2024 Dec 13;20(6):1754-1769.
13. GBD 2021 Adult BMI Collaborators. Global, regional, and national prevalence of adult overweight and obesity, 1990–2021, with forecasts to 2050: a forecasting study for the Global Burden of Disease Study 2021. *Lancet*. 2025 Mar 8;405(10481):813-838.
14. NCD Risk Factor Collaboration (NCD-RisC). Worldwide trends in underweight and obesity from 1990 to 2022: a pooled analysis of 3663 population-representative studies with 222 million children, adolescents, and adults. *Lancet*. 2024 Mar 16;403(10431):1027-1050.
15. Sebastian SA, Shah Y, Paul H, Arsene C, Life's Essential 8 and the risk of cardiovascular disease: a systematic review and meta-analysis, *Eur J Prev Cardiol*. 2025;32(5):358–373, <https://doi.org/10.1093/eurjpc/zwae280>
16. Cappuccio FP, Cooper D, D'Elia L, Strazzullo P, Miller MA. Sleep duration predicts cardiovascular outcomes: a systematic review and meta-analysis. *Eur Heart J*. 2011;32(12):1484–1492.

17. Wang S, Li Z, Wang X, Guo S, Sun Y, Li G, Zhao C, Yuan W, Li M, Li X, Ai S. Associations between sleep duration and cardiovascular diseases: A meta-review and meta-analysis of observational and Mendelian randomization studies. *Front Cardiovasc Med.* 2022 Aug 11;9:930000.
18. Mazidi M, Shekoohi N, Katsiki N, Banach M. Longer sleep duration may negatively affect renal function. *Int Urol Nephrol.* 2021 Feb;53(2):325-332. doi: 10.1007/s11255-020-02624-6.
19. Ballesio A, Aquino MRJV, Kyle SD, Ferlazzo F, Lombardo C. The efficacy of digital cognitive behavioral therapy for insomnia (dCBT-I) in the real world: a meta-analysis. *Sleep Med Rev.* 2022;61:101568.
20. Yusuf S, Hawken S, Ôunpuu S, Dans T, Avezum A, Lanas F, et al. Effect of potentially modifiable risk factors associated with myocardial infarction in 52 countries. *Lancet.* 2004;364(9438):937–952.
21. Chida Y, Steptoe A. The association of anger and hostility with future coronary heart disease: a meta-analytic review. *Psychol Bull.* 2009;135(4):627–653.
22. Kutal S, Tulkki LJ, Sarkanen T, Redfors P, Jood K, Nordanstig A, et al. Association Between Self-Perceived Stress and Cryptogenic Ischemic Stroke in Young Adults: A Case-Control Study. *Neurology.* 2025 Mar 25;104(6):e213369.
23. Health at a Glance: Europe 2024. STATE OF HEALTH IN THE EU CYCLE: <https://www.oecd.org/en/publications/health-at-a-glance-europe-2024>
24. Wood AM, Kaptoge S, Butterworth AS, Willeit P, Warnakula S, Bolton T, et al. Risk thresholds for alcohol consumption: combined analysis of individual-participant data. *Lancet.* 2018;391(10129):1513–1523.
25. GBD 2016 Alcohol Collaborators. Alcohol use and burden for 195 countries and territories, 1990–2016: a systematic analysis for the Global Burden of Disease Study 2016. *Lancet.* 2018 Sep 22;392(10152):1015-1035. doi: 10.1016/S0140-6736(18)31310-2.
26. Khan SS, Coresh J, Pencina MJ, Ndumele CE, Rangaswami J, Chow SL, et al; American Heart Association. Novel Prediction Equations for Absolute Risk Assessment of Total Cardiovascular Disease Incorporating Cardiovascular-Kidney-Metabolic Health: A Scientific Statement From the American Heart Association. *Circulation.* 2023 Dec 12;148(24):1982-2004.
27. Banach M, Surma S, Guzik TJ, Penson PE, Blaha MJ, Pinto FJ, Sperling LS. Upfront lipid-lowering combination therapy in high cardiovascular risk patients: a route to effective atherosclerotic cardiovascular disease prevention. *Cardiovasc Res.* 2025 Mar 18;cvaf045. doi: 10.1093/cvr/cvaf045.
28. Sosnowska B, Toth PP, Razavi AC, Remaley AT, Blumenthal RS, Banach M. 2024: The Year in Cardiovascular Disease - The Year of Lipoprotein(a) – Research Advances and New Findings. *Archives of Medical Science.* 2025;21(2):355-373. doi:10.5114/aoms/202213.
29. Fogacci F, Di Micoli V, Sabouret P, Giovannini M, Cicero AFG. Lifestyle and Lipoprotein(a) Levels: Does a Specific Counseling Make Sense? *J Clin Med.* 2024;13(3):751. doi: 10.3390/jcm13030751.
30. Sosnowska B, Stepinska J, Mitkowski P, Bielecka-Dabrowa A, Bobrowska B, Budzianowski J, et al. Recommendations of the Experts of the Polish Cardiac Society (PCS) and the Polish Lipid Association (PoLA) on the diagnosis and management of elevated lipoprotein(a) levels. *Arch Med Sci.* 2024 Jan 31;20(1):8-27.
31. Bielecka-Dabrowa A, Lewek J, Sakowicz A, Paduszyńska A, Dąbrowa M, Orszulak-Michalak D, Banach M, Cardioplus Investigators. Effects of Implementing Personalized Health Education in Ambulatory Care on Cardiovascular Risk Factors, Compliance and Satisfaction with Treatment. *J Pers Med.* 2022 Sep 26;12(10):1583.
32. Banach M, Penson PE. Adherence to statin therapy: it seems we know everything, yet we do nothing. *Eur Heart J Open.* 2022 Oct 26;2(6):oeac071.
33. Banach M, Reiner Ž, Surma S, Bajraktari G, Bielecka-Dabrowa A, Bunc M, et al; International Lipid Expert Panel (ILEP). 2024 Recommendations on the Optimal Use of Lipid-Lowering Therapy in Established Atherosclerotic Cardiovascular Disease and Following Acute Coronary Syndromes: A Position Paper of the International Lipid Expert Panel (ILEP). *Drugs.* 2024 Dec;84(12):1541-1577.

34. Fernandez-Jimenez R, Jaslow R, Bansilal S, Santana M, Diaz-Munoz R, Latina J, et al.. Child Health Promotion in Underserved Communities: The FAMILIA Trial. *J Am Coll Cardiol*. 2019 Apr 30;73(16):2011-2021.
35. Fernandez-Jimenez R, Santos-Beneit G, de Cos-Gandoy A, Fernández-Alvira JM, Tresserra-Rimbau A, Storniolo C, et al. Prevalence and correlates of cardiovascular health among early adolescents enrolled in the SI! Program in Spain: a cross-sectional analysis. *Eur J Prev Cardiol*. 2022 Feb 19;29(1):e7-e10.
36. Chowdhury R, Khan H, Heydon E, Shroufi A, Fahimi S, Moore C, Stricker B, Mendis S, Hofman A, Mant J, Franco OH. Adherence to cardiovascular therapy: a meta-analysis of prevalence and clinical consequences. *Eur Heart J*. 2013 Oct;34(38):2940-8.
37. Banach M, Stulc T, Dent R, Toth PP. Statin non-adherence and residual cardiovascular risk: There is need for substantial improvement. *Int J Cardiol*. 2016 Dec 15;225:184-196.
38. Penson PE, Bruckert E, Marais D, Reiner Ž, Pirro M, Sahebkar A, et al.; International Lipid Expert Panel (ILEP). Step-by-step diagnosis and management of the placebo/drucebo effect in statin-associated muscle symptoms patients: a position paper from the International Lipid Expert Panel (ILEP). *J Cachexia Sarcopenia Muscle*. 2022 Jun;13(3):1596-1622.
39. Sørensen K, Pelikan JM, Röthlin F, Ganahl K, Slonska Z, Doyle G, et al. Health literacy in Europe: comparative results of the European health literacy survey (HLS-EU). *BMC Public Health*. 2021;21(1):1–13.
40. Zhang H, Plutzky J, Shubina M, Turchin A. Discontinuation of statins in routine care settings: a cohort study. *J Am Coll Cardiol*. 2021;77(14):1736–1747.
41. Wang JB, Cadmus-Bertram LA, Natarajan L, White MM, Madanat H, Nichols JF, et al. Wearable sensor/device (Fitbit One) and SMS prompts to increase physical activity. *JAMA Intern Med*. 2016;176(3):385–392.
42. Yeung AWK, Torkamani A, Butte AJ, Glicksberg BS, Schuller B, Rodriguez B, Tet al. The promise of digital healthcare technologies. *Front Public Health*. 2023 Sep 26;11:1196596.
43. Miszalski-Jamka M, Malawski F, Goslinski J, Witkowska M, Purgol P, Bujny M, et al. AI-based algorithm for assessing coronary artery calcium score on contrast-enhanced cardiac computed tomography scans, *Eur Heart J* 2024; 45 (Supplement_1):ehae666.197.
44. Fogacci F, Ray KK, Nicholls SJ, Cicero AFG. Reducing the global prevalence of cardiometabolic risk factors: a bet worth winning. *Metabolism*. 2025;163:156084. doi: 10.1016/j.metabol.2024.156084.
45. Anderson L, Oldridge N, Thompson DR, Zwisler AD, Rees K, Martin N, et al. Exercise-based cardiac rehabilitation for coronary heart disease. *Cochrane Database Syst Rev*. 2016;1:CD001800.
46. Surma S, Sahebkar A, Banach M; endorsed by the International Lipid Expert Panel (ILEP). Low carbohydrate/ketogenic diet in the optimization of lipoprotein(a) levels: do we have sufficient evidence for any recommendation? *Eur Heart J*. 2023 Dec 14;44(47):4904-4906.
47. Zhubi-Bakija F, Bajraktari G, Bytyçi I, Mikhailidis DP, Henein MY, Latkovskis G, Rexhaj Z, Zhubi E, Banach M; International Lipid Expert Panel (ILEP). The impact of type of dietary protein, animal versus vegetable, in modifying cardiometabolic risk factors: A position paper from the International Lipid Expert Panel (ILEP). *Clin Nutr*. 2021 Jan;40(1):255-276.

Figure 1. The interplay of different modifiable risk factors with cardiovascular health in relation to the ILEP-SMILE approach.

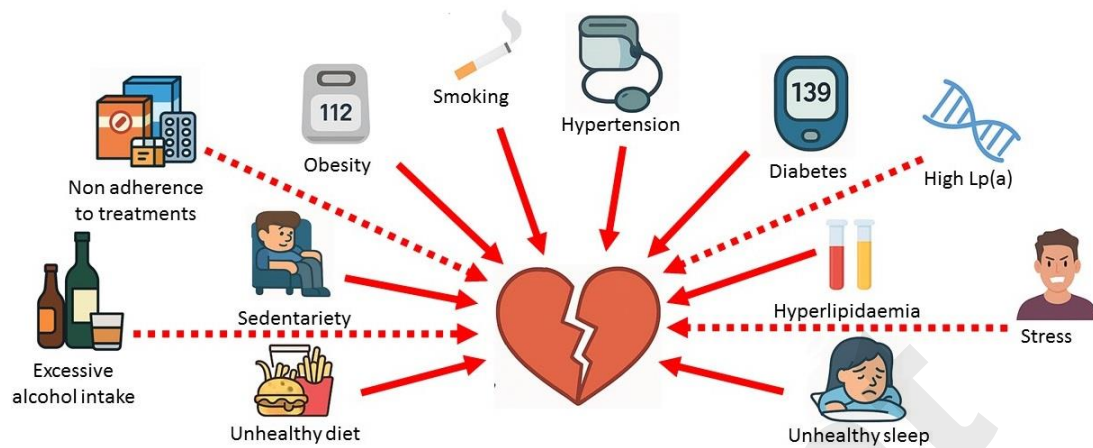


Figure 2: The International Lipid Expert Panel SiMple tips for the heaLthy hEart (ILEP-SMILE). Details on the risk factors and suitable recommendations.

Preprint

The International Lipid Expert Panel Simple Tips for the Healthy Heart (ILEP-SMILE)

12 **ILEP**
smile
tips for the heart



Lack of regular physical exercises Be more active!

At least 150 minutes of moderate-intensity aerobic exercise or 75 minutes of vigorous-intensity exercise per week, along with muscle-strengthening activities on ≥ 2 per week is recommended. Alternatively, at least 4,000 steps per day, preferably 6-13,000 depending on age (the more the better up to 20,000 steps/day on average).



Unhealthy Diet Eat better!

There is a recommendation for well-balanced diet, especially the Mediterranean or the DASH diets. This should include whole foods, lots of fruits and vegetables, fish, lean/plant protein, nuts, seeds, and olive. Restrictive diets, beside the hypolipidemic one, are mostly not recommended.



Obesity and underweight Reduce and manage your weight!

Optimal BMI is less than 25, but less than 18.5 is considered underweight. It is strongly recommended to achieve and maintain a healthy weight to avoid the obesity disease and its complications.



Smoking Quit tabaccoo!

Still on of the most prevalent CVD risk factor. Smoking (cigarettes, e-cigarettes and vaping products) cessation is strongly recommended



Lipid disorders Control cholesterol!

Measure (on any occasion), know and monitor your cholesterol – the most common CVD risk factor. Be on LDL-C target (depending on your risk) as early as possible to significantly reduce CVD outcomes.

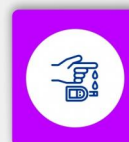


Hypertension Manage blood pressure!

The 2nd most common CVD risk factor. Levels less than 120/80 mm Hg are optimal. High blood pressure is defined as 130-139 mm Hg systolic pressure or 80-89 mm Hg diastolic pressure.

Diabetes Manage blood sugar!

Measure and monitor your fasting blood glucose (FBG) and haemoglobin A1c. The risk is not only associated with diabetes (and its micro- and macrovascular complications) but also with prediabetes that may be present in as many as 40% of the adult population.



Sleep disorders Get healthy sleep!

Adults need 6-8 hours of sleep each night. Adequate sleep improves brain function and significantly reduces the risk for chronic diseases, including cardiovascular ones.



Alcohol consumption Completely avoid alcohol!

There is no healthy amount of alcohol. Alcohol is harmful and should be completely avoided. In the ILEP recommendations all other stimulants are also completely forbidden.



Stress Effectively fight with stress!

There is no standard recommendations on how to avoid and effectively fight with stress. Personalized counseling is recommended. Chronic stress can significantly affect cardiovascular health (and may impact all chronic conditions) and should be avoided.



Nonadherence and lack of education Follow your doctor and be educated on health!

Nonadherence is an independent risk factor that may significantly affect CVD outcomes. Patient's education on the disease, lifestyle changes, and therapy is of critical importance. This may significantly improve adherence and reduce the risk of cardiovascular the risk of cardiovascular outcomes.



Elevated lipoprotein(a) Check your Lp(a) at least once!

Elevated Lp(a) over 50 mg/dl (125 nmol/l) is an independent CVD risk factor (Lp(a) is 6x more atherogenic than LDL-C) with the prevalence of about 20% of the patients, what makes Lp(a) the 5th most prevalent CVD risk factor. Measure your Lp(a) at least once and consult the result with the physician to consider suitable management in case of elevated values.



learn more ilep.eu/ilep-smile

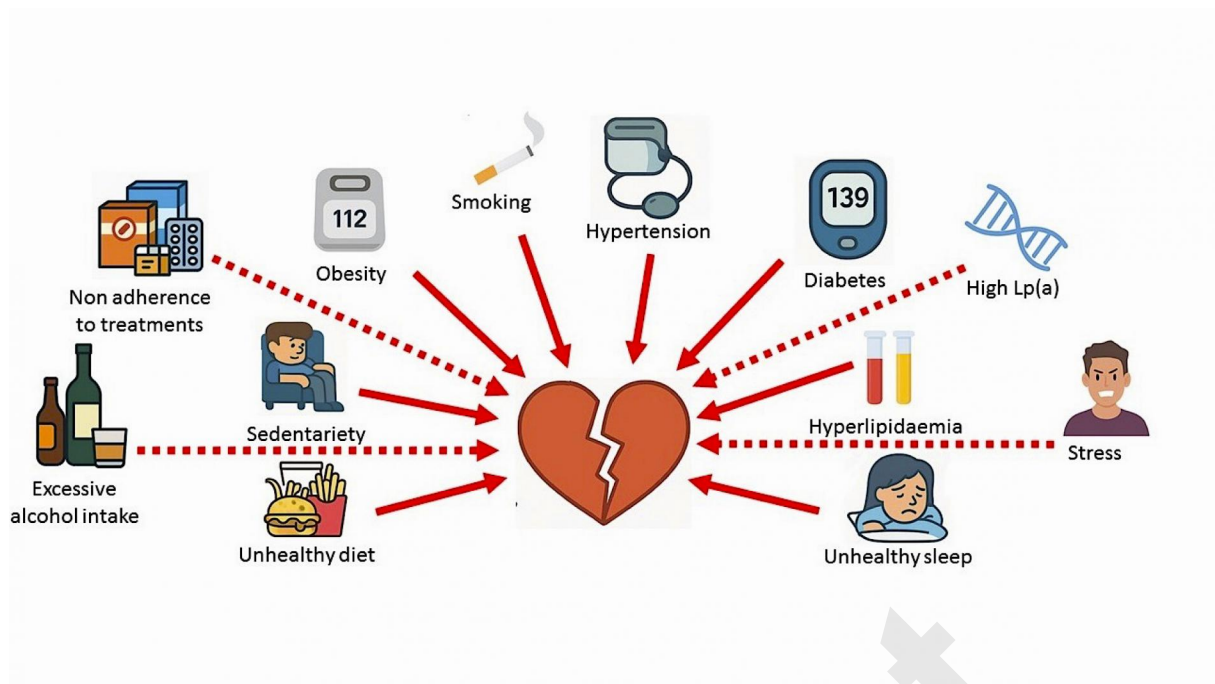


Figure 1.