

Dynamic serum amyloid A for the prediction of the trajectory of ventilator-associated pneumonia in elderly patients with acute ischemic stroke undergoing endovascular therapy and general anesthesia

Ping Su, Yipin Ji*

Department of Anesthesiology, Huai'an Hospital of Huai'an City, Huai'an, Jiangsu Province, China

Submitted: 27 March 2025; **Accepted:** 12 June 2025

Online publication: 22 June 2025

Arch Med Sci

DOI: <https://doi.org/10.5114/aoms/207061>

Copyright © 2025 Termedia & Banach

***Corresponding author:**

Yipin Ji

Department of

Anesthesiology

Huai'an Hospital

of Huai'an City

Huai'an, 223200

Jiangsu Province, China

E-mail: yipinji_2025@163.com

Abstract

Introduction: In patients with acute ischemic stroke (AIS), current models for predicting ventilator-associated pneumonia (VAP) predominantly rely on multi-parameter approaches, which significantly increase data collection complexity and hinder clinical implementation. Here, we further investigate VAP-related risk factors while dynamically analyzing the predictive value of serum amyloid A (SAA) levels for VAP, aiming to bridge the gap between biomarker-driven simplicity and clinical practicality.

Material and methods: 387 patients were ultimately enrolled and divided into two groups: non-VAP ($n = 278$) and VAP ($n = 109$). The least absolute shrinkage and selection operator (LASSO), univariate and multivariate logistic regression analyses were utilized to examine the independent risk factors associated with VAP. Calibration and decision curve analysis (DCA) curves were employed to assess the model's goodness of fit.

Results: A VAP prediction model incorporating seven multimodal clinical parameters, including age, mechanical ventilation duration, DBP, admission NIHSS score, hs-CRP, TC, and SAA-T2, was developed, achieving exceptional predictive performance with an AUC (95% CI) of 0.961 (0.942–0.980). Based on single-parameter AUC values and DCA, SAA-T2 demonstrated the highest diagnostic efficacy and net clinical benefit. The diagnostic performance of Model 1 and SAA-T2 yielded AUCs (95% CI) of 0.889 (0.853–0.924) and 0.885 (0.842–0.928), respectively, with no statistically significant difference between them. Notably, the addition of SAA-T2 to Model 1 significantly enhanced its diagnostic accuracy for VAP.

Conclusions: We developed an excellent nomogram model incorporating seven clinical parameters to predict VAP. SAA-T2 may serve as a rapid and practical clinical indicator for predicting VAP in AIS patients, balancing accuracy with clinical feasibility.

Key words: dynamic serum amyloid A, acute ischemic stroke, ventilator-associated pneumonia, endovascular therapy.

Introduction

Acute ischemic stroke (AIS), characterized by impaired cerebral perfusion with high morbidity, disability, and mortality rates, commonly requires endovascular treatment (EVT) [1]. In this context, general anesthesia has become a cornerstone technique for EVT protocols, offering critical

advantages including airway protection, complete motion control, and enhanced intraoperative imaging quality to optimize procedural outcomes [2]. However, prolonged mechanical ventilation carries an elevated risk of ventilator-associated pneumonia (VAP), with studies indicating that postoperative VAP incidence rates may approach 50% in this patient population [2]. VAP is a type of hospital-acquired pneumonia and a common complication in patients with mechanical ventilation [3, 4]. VAP is defined as pneumonia occurring 48 h after endotracheal intubation or tracheostomy for mechanical ventilation and up to 48 h after extubation [3]. Studies worldwide report that the incidence and mortality rates of VAP can reach as high as 50% and 70%, respectively [5–7]. The development of VAP is associated with airway damage, impaired cough reflex, compromised mucociliary clearance, and bacterial colonization (including pathogens such as *Acinetobacter baumannii*, *Pseudomonas aeruginosa*, and *Staphylococcus aureus*) [5, 8–10]. Bacterial antibiotic resistance has become a major global public health challenge, particularly in the treatment of VAP. Therefore, early recognition of VAP is critical for timely diagnosis and improved clinical outcomes. Currently, there is no definitive gold standard for diagnosing VAP [5, 11]. Diagnosis primarily relies on new or progressive infiltrates on chest X-ray or CT, combined with at least two of the following clinical criteria: fever, neutrophilia ($> 10 \times 10^9/\text{l}$) or neutropenia ($< 5 \times 10^9/\text{l}$), and purulent sputum [5]. The complexity of diagnosis significantly hampers the rapid clinical identification of VAP.

Serum amyloid A (SAA) is an acute-phase reactant synthesized by the liver and belongs to the apolipoprotein family [12]. SAA levels rise significantly in response to inflammation, infection, or tissue injury, making it a critical biomarker for assessing inflammatory status. Compared to C-reactive protein (CRP), SAA exhibits earlier and more sensitive elevation during inflammatory processes [13]. Elevated SAA levels are strongly associated with cardiovascular diseases and serve as an independent predictor of cardiovascular events [14–16]. In addition, elevated SAA levels have been associated with post-stroke inflammation, post-stroke cognitive impairment and poor prognosis in AIS patients undergoing intravenous thrombolysis [12, 17–21]. SAA may be an available predictor for VAP with a sensitivity and specificity of 100% and 93.1%, respectively [22]. SAA also serves as a valuable prognostic indicator for postoperative VAP in elderly patients undergoing abdominal surgery with tracheal intubation and general anesthesia [23]. More intriguingly, the measurement levels of SAA at different time points predict distinct prognostic capabilities [12], highlighting the critical clinical significance of dynamic SAA monitoring.

Although SAA has shown potential as a biomarker for predicting VAP, the differential predictive value of dynamic SAA levels in VAP remains unreported. This study aims to enroll elderly patients with AIS undergoing endovascular therapy and general anesthesia, with or without VAP. By dynamically measuring serum SAA levels at three distinct time points, pre-operation, 48 h post-mechanical ventilation, and 96 h post-mechanical ventilation, we will evaluate the variations in SAA's predictive efficacy for VAP in this cohort population.

Material and methods

Study participants and design

We conducted a retrospective analysis of clinical data from 641 AIS patients treated with endovascular therapy under general anesthesia between January 2020 and December 2024. Inclusion criteria required confirmation of AIS diagnosis according to the American Heart Association/American Stroke Association (AHA/ASA) guidelines [24]. The study excluded participants based on the following criteria: (1) secondary transport for stroke ($n = 27$); (2) preoperative pneumonia ($n = 35$); (3) trauma ($n = 22$); (4) with a recent history of cardiopulmonary resuscitation or established artificial airway ($n = 7$); (5) died during postoperative period within 96 h ($n = 6$); (6) with immune, blood, tumor, severe cardiovascular, hepatic, renal disorders, or unstable vital signs ($n = 23$); (7) data missing and incomplete medical records ($n = 134$). Exclusion criteria led to the removal of 254 AIS patients, resulting in a final cohort of 387 individuals who underwent endovascular therapy under general anesthesia. Among 641 AIS patients who underwent endovascular therapy and general anesthesia, a total of 254 patients were excluded, and 387 patients were ultimately enrolled in the study. These 387 AIS patients were divided into two groups: non-VAP ($n = 278$) and VAP ($n = 109$) (Figure 1). The authors assume full responsibility for study design, data interpretation, and resolution of any concerns related to data accuracy or methodological rigor.

Primary and secondary clinical outcomes

The diagnostic criteria for VAP were defined according to prior studies, and perioperative anesthetic management protocols were guided by established clinical guidelines [23]. The diagnosis of VAP requires meeting specific criteria: radiographic evidence of new or progressive abnormalities on chest X-ray/CT scan combined with at least two clinical manifestations from the following: (1) fever (body temperature $> 38^\circ\text{C}$); (2) purulent respiratory secretions; (3) leukocyte count

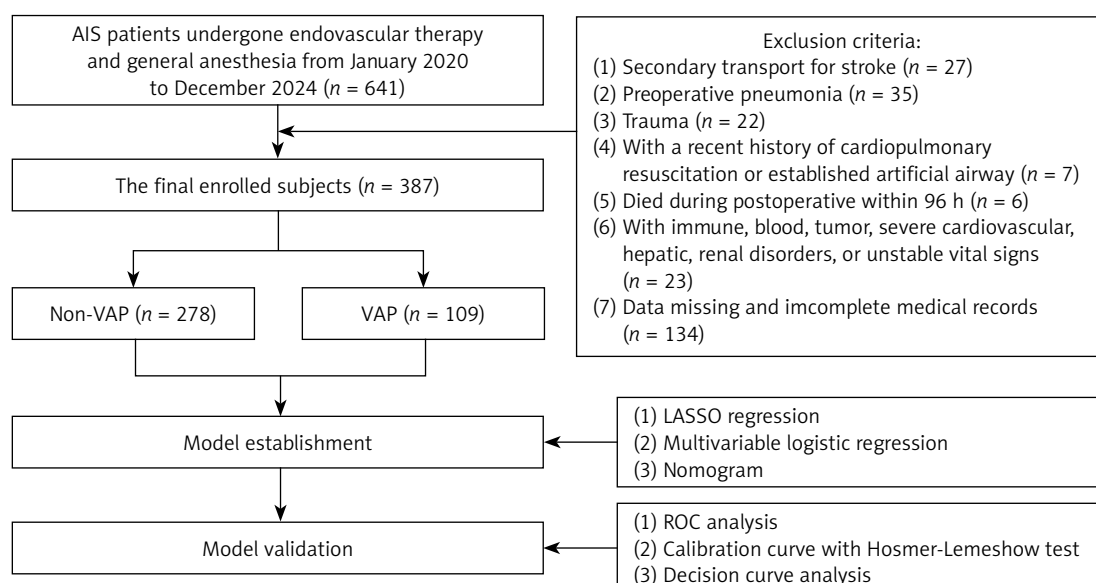


Figure 1. Flowchart of participant enrollment, model development, and validation

AIS – acute ischemic stroke, VAP – ventilator-associated pneumonia, LASSO – least absolute shrinkage and selection operator, ROC – receiver operating characteristic.

> $10 \times 10^9/l$ or < $4 \times 10^9/l$; and (4) presence of cough, dyspnea, or tachypnea (respiratory rate > 25 breaths per minute). The primary outcome of this study was the development of a VAP prediction model, while the secondary outcomes focused on examining the association between SAA levels measured at serial time points and VAP occurrence, as well as evaluating the predictive performance of other clinical indicators. 30-day mortality was the main prognostic parameter in our study.

Data collection and laboratory test

General information, including age, gender, time of mechanical ventilation, body mass index (BMI), hypertension history, systolic blood pressure (SBP), diastolic blood pressure (DBP), diabetes history, stroke history, time of operation, Trial of ORG 10172 in Acute Stroke Treatment (TOAST), hyperlipidemia, fasting blood glucose (FBG), hemoglobin, thrombolysis in cerebral infarction (TICI), length of stay (LOS), National Institute of Health Stroke Scale (NIHSS) score, Glasgow Coma Scale (GCS) score, modified Rankin Scale (mRS), creatinine (Cre) determined using the enzymatic assay, homocysteine (Hcy) determined using the fluorescence polarization immunoassay (FPIA), uric acid (UA) determined using the enzymatic colorimetric assay, D-dimer (D-D) determined using the chemiluminescent immunoassay (CLIA), high-sensitivity C-reactive protein (hs-CRP) determined using the immunonephelometry assay, triglycerides (TG) determined using the enzymatic method, total cholesterol (TC) determined using the enzymatic method, low-density lipoprotein

cholesterol (LDL-C) determined using the homogeneous direct assay (polyethylene glycol-modified enzymes), high-density lipoprotein cholesterol (HDL-C) determined using the homogeneous precipitation (accelerated surfactant method), serum amyloid A (SAA) at pre-operation (T1), 48 h post-mechanical ventilation (T2), and 96 h (T3) post-mechanical ventilation, were collected to file/obtain VAP-related risk factors. The concentration of serum SAA was measured by a commercially available kit with scattering nephelometry (Cat. no. OQMP11; Siemens Healthcare Diagnostics Products GmbH, Munich, Germany; intra-assay CV $\leq 6.2\%$, inter-assay CV $\leq 4.7\%$, and total CV $\leq 6.4\%$) with an automatic biochemical analyser (ADVIA 2400, Siemens, Munich, Germany). The diagnostic criteria for hyperlipidemia were established in accordance with the NCEP-ATP III guidelines, with biochemical cutoff values defined as follows: TC ≥ 6.2 mmol/l, LDL-C ≥ 4.1 mmol/l and TG ≥ 2.3 mmol/l. The biochemical marker analysis was conducted using the Mindray BS-800M fully automatic biochemical analyzer. Intra-assay coefficient of variation: < 5% (enzymatic indicators), < 8% (immunoassay indicators); inter-assay coefficient of variation: < 7% (enzymatic indicators), < 10% (immunoassay indicators).

Statistical analysis

Statistical analyses were performed using IBM SPSS Statistics (version 25.0, IBM, Armonk, NY, USA), GraphPad Prism 9.0 (GraphPad Software, Inc., La Jolla, CA, USA), and R software (version 4.2.1) with the survival package (version 3.3.1),

rms package (version 6.3-0), timeROC package (version 0.4), and ggplot2 package (version 3.3.6). Descriptive statistics, such as the median and interquartile range (IQR) for non-normally distributed data or the mean and standard deviation for normally distributed data, were calculated. The study utilized Fisher's exact test or χ^2 test for categorical variables, Wilcoxon signed-rank test for continuous variables, *t*-tests, and Mann-Whitney test for group differences assessment. Comparisons among the three groups were performed using the omnibus Kruskal-Wallis test, followed by Dunn's test for post-hoc multiple comparisons. Sankey diagrams were visualized using the ggplot2 package (version 3.4.4) and ggaluvial package (version 0.12.3). The independent risk factors associated with VAP were examined through the least absolute shrinkage and selection operator (LASSO) and the binary logistic regression analysis. Receiver operating characteristic (ROC) curves with area under the curve (AUC) were used to evaluate the predictive effectiveness of risk factors. LASSO regression was employed to assess the prognostic correlation coefficient, while the glmnet package (version 4.1.7) was utilized for the analysis of the processed data in order to determine the variable lambda value, maximum likelihood number or C-index with R software (version 4.2.1). The glm function was utilized to develop a binary logistic model, while the rms (version 6.4.0) and ResourceSelection (version 0.3-5) packages were employed to construct a nomogram model and facilitate its visualization. The goodness-of-fit of the nomogram model was assessed using statistical measures such as the likelihood-ratio test, C index, and Hosmer-Lemeshow goodness-of-fit test. The rms package (version 6.3-0) was utilized for calibration analysis and data visualization. The

stdca.R file was employed for conducting decision curve analysis (DCA). A two-tailed approach was employed for all statistical analyses, with statistical significance defined as *p*-values less than 0.05.

Results

Population characteristics and baseline data

We collected 31 clinical parameters, and 12 parameters showed significant intergroup differences, including age, time of mechanical ventilation, hypertension history, DBP, TICI score, admission NIHSS score, hs-CRP, LDL-C, SAA-T1, SAA-T2, SAA-T3, and 30-day mortality (Table I). Compared with non-VAP patients, VAP patients had a higher age, proportion of those with mechanical ventilation duration > 2 days, diastolic blood pressure, proportion of those with TICI score (0-2a), admission NIHSS score, hs-CRP level, LDL-C level, and significantly increased SAA-T1 at three different time points. Moreover, the mortality rate was also significantly increased in VAP patients compared with non-VAP patients (Table I).

SAA level associated with VAP in AIS patients

Compared to non-VAP patients, SAA levels at three different time points (T1, T2, T3) were significantly elevated in VAP patients (Figure 2 A). Additionally, SAA levels at T2 and T3 were significantly higher than at T1 in VAP patients. However, no significant difference was observed between T2 and T3 time points in VAP patients (Figure 2 B). Furthermore, using a Sankey diagram to dynamically visualize the correlation between SAA level changes and VAP, we found that higher SAA levels were more likely to be associated with postoperative VAP occurrence (Figure 2 C).

Table I. Clinical characteristics in elderly AIS patients with or without VAP

Characteristics	Non-VAP (n = 278)	VAP (n = 109)	P-value
Age [years], median (IQR)	71 (67, 77)	75 (70, 81)	< 0.001
Gender, n (%)			0.349
Male	175 (45.2)	63 (16.3)	
Female	103 (26.6)	46 (11.9)	
Time of mechanical ventilation [days], n (%)			< 0.001
≤ 2	207 (53.5)	53 (13.7)	
> 2	71 (18.3)	56 (14.5)	
BMI [kg/m ²], median (IQR)	24.1 (21.0, 26.0)	23.9 (20.8, 26.0)	0.862
Hypertension, n (%)			0.003
No	256 (66.1)	89 (23)	
Yes	22 (5.7)	20 (5.2)	
SBP [mm Hg], median (IQR)	129 (125, 133)	129 (125, 133)	0.713
DBP [mm Hg], median (IQR)	81 (78, 83)	83 (82, 85)	< 0.001

Table I. Cont.

Characteristics	Non-VAP (n = 278)	VAP (n = 109)	P-value
Hyperlipidemia, n (%)			0.956
No	187 (48.3)	73 (18.9)	
Yes	91 (23.5)	36 (9.3)	
Diabetes history, n (%)			0.774
No	200 (51.7)	80 (20.7)	
Yes	78 (20.2)	29 (7.5)	
Stroke history, n (%)			0.170
No	231 (59.7)	84 (21.7)	
Yes	47 (12.1)	25 (6.5)	
Time of operation, median (IQR)	94 (77, 111)	94 (78, 110)	0.640
TOAST classification, n (%)			0.520
Large-artery atherosclerosis	75 (19.4)	35 (9)	
Cardioembolism	62 (16)	27 (7)	
Small vessel occlusion	114 (29.5)	40 (10.3)	
Others	27 (7)	7 (1.8)	
TICI score, n (%)			0.003
2b-3	225 (58.1)	73 (18.9)	
0-2a	53 (13.7)	36 (9.3)	
LOS [days], median (IQR)	10 (8, 11)	10 (8, 12)	0.255
Admission NIHSS, median (IQR)	10.8 (9.0, 13.0)	14.3 (12.0, 16.2)	< 0.001
Admission GCS, median (IQR)	10 (9, 12)	10 (8, 12)	0.420
Admission mRs, 0 ~ 2 score, n (%)			0.225
No	173 (44.7)	75 (19.4)	
Yes	105 (27.1)	34 (8.8)	
FBG ≥ 11.0 mmol/l, n (%)			0.731
No	236 (61)	91 (23.5)	
Yes	42 (10.9)	18 (4.7)	
Hemoglobin (g/dl), median (IQR)	13.3 (11.9, 15.0)	13 (12.1, 15.3)	0.728
Cre [mg/dl], median (IQR)	1.2 (1.0, 1.5)	1.2 (0.9, 1.5)	0.765
Hcy [μmol/l], median (IQR)	17 (14, 20)	17 (14, 20)	0.831
UA [μmol/l], median (IQR)	357.5 (333.0, 462.5)	385.0 (320.0, 463.0)	0.477
D-D [mg/l], median (IQR)	1.5 (1.2, 1.8)	1.6 (1.2, 1.9)	0.339
hs-CRP [mg/l], median [IQR]	12.4 (8.3, 15.2)	14.2 (9.8, 17.9)	< 0.001
TG [mmol/l], median [IQR]	2.03 (1.84, 2.10)	1.98 (1.75, 2.16)	0.422
TC [mmol/l], median [IQR]	4.70 (4.20, 5.00)	4.70 (4.20, 5.20)	0.183
LDL-C [mmol/l], median [IQR]	2.90 (2.60, 3.10)	3.00 (2.70, 3.30)	0.003
HDL-C [mmol/l], median [IQR]	1.20 (1.08, 1.33)	1.21 (1.11, 1.34)	0.284
SAA-T1 [mg/l], median [IQR]	36.0 (33.1, 39.0)	56.2 (34.5, 77.3)	< 0.001
SAA-T2 [mg/l], median [IQR]	40.1 (31.2, 45.1)	74.6 (56.0, 92.7)	< 0.001
SAA-T3 [mg/l], median [IQR]	42.8 (33.0, 51.4)	69.4 (50.6, 78.3)	< 0.001
30-day mortality, n (%)			< 0.001
No	248 (64.1)	73 (18.9)	
Yes	30 (7.8)	36 (9.3)	

AIS – acute ischemic stroke, VAP – ventilator-associated pneumonia, IQR – interquartile range, BMI – body mass index, SBP – systolic blood pressure, DBP – diastolic blood pressure, TOAST – Trial of ORG 10172 in Acute Stroke Treatment, TICI – thrombolysis in cerebral infarction, LOS – length of stay, NIHSS – National Institute of Health Stroke Scale, GCS – Glasgow Coma Scale, mRs – modified Rankin Scale, FBG – fasting blood glucose, Cre – creatinine, Hcy – homocysteine, UA – uric acid, D-D – D-dimer, hs-CRP – high-sensitivity C-reactive protein, TG – triglycerides, TC – total cholesterol, LDL-C – low-density lipoprotein cholesterol, HDL-C – high-density lipoprotein cholesterol, SAA – serum amyloid A, T1 – pre-operation, T2 – 48 h post-mechanical ventilation, T3 – 96 h post-mechanical ventilation.

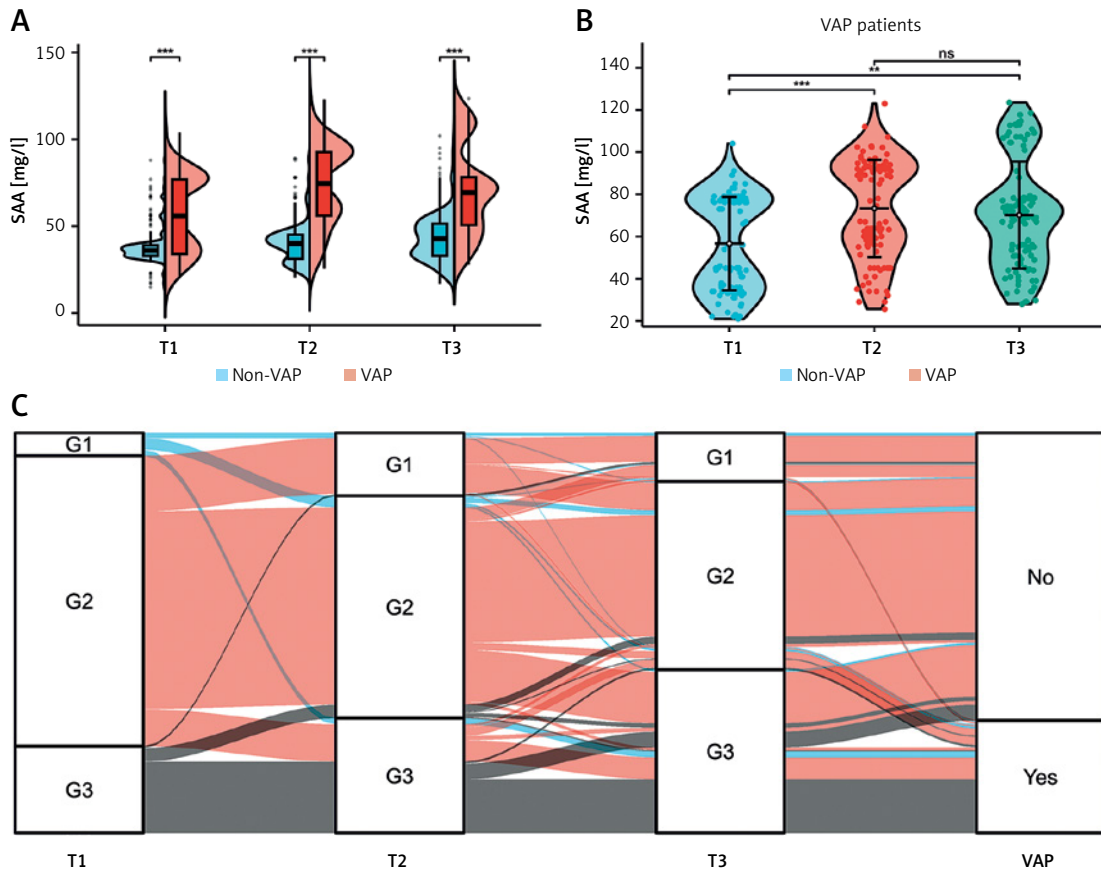


Figure 2. SAA level associated with VAP in AIS patients. **A** – Serum SAA levels at three different time points (T1, T2, T3) were analyzed in AIS patients with or without VAP. **B** – AA levels at T1, T2 and T3 were compared in VAP patients. **C** – Using a Sankey diagram to dynamically visualize the correlation between SAA level changes and VAP in patients with AIS (G1 ≤ 30 mg/l; 30 mg/l < G2 ≤ 50 mg/l; G3 > 50 mg/l)

T1 – pre-operation, T2 – 48 h post-mechanical ventilation, T3 – 96 h post-mechanical ventilation. SAA – serum amyloid A, AIS – acute ischemic stroke, VAP – ventilator-associated pneumonia. ns – no significance; * $p < 0.01$; *** $p < 0.001$.

Screening of VAP-related risk factors in AIS patients

First, we performed LASSO regression analysis, including LASSO coefficient screening (Figure 3 A) and variable trajectory plots (Figure 3 B), which identified 8 non-zero coefficients associated with VAP in AIS patients. Subsequently, univariate and multivariate logistic regression analyses were

used to identify VAP-related risk factors in AIS patients. The results revealed that the following 7 clinical parameters were independent risk factors for VAP development: age (OR = 1.096; 95% CI: 1.032–1.164; $p = 0.003$), time of mechanical ventilation > 2 days (OR = 3.990; 95% CI: 1.721–9.247; $p = 0.001$), DBP (OR = 1.174; 95% CI: 1.030–1.339; $p = 0.017$), admission NIHSS score (OR = 1.309;

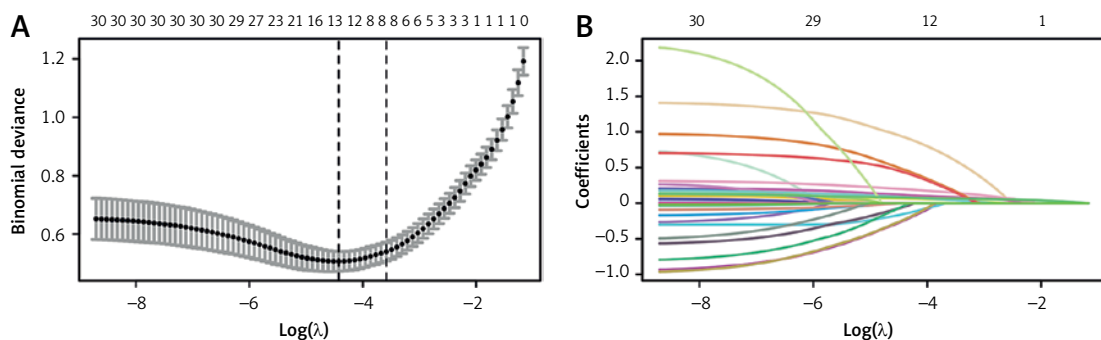


Figure 3. Screening of VAP-related risk factors in AIS patients with LASSO. LASSO regression analysis, including LASSO coefficient screening (A) and variable trajectory plots (B), was used to identify non-zero coefficients associated with VAP in AIS patients

LASSO – least absolute shrinkage and selection operator, VAP – ventilator-associated pneumonia, AIS – acute ischemic stroke.

95% CI: 1.145–1.497; $p < 0.001$), hs-CRP (OR = 1.143; 95% CI: 1.045–1.250; $p = 0.004$), TC (OR = 2.297; 95% CI: 1.221–4.320; $p = 0.010$), and SAA-T2 (OR = 1.104; 95% CI: 1.076–1.132; $p < 0.001$) (Table II).

Establishment of a nomogram for predicting VAP in patients with AIS

We constructed a nomogram for predicting VAP in AIS patients using seven clinical parameters: age, time of mechanical ventilation, DBP, admission NIHSS score, hs-CRP, TC, and SAA-T2. The prediction method involves calculating individual scores for each parameter, summing them to obtain a total score, and then drawing a vertical line from the total score axis to determine the corresponding VAP risk probability (Figure 4 A). The likelihood ratio test ($p < 0.05$) indicated that at least one variable in the model had a statistically significant OR, and the overall model was meaningful. Discrimination ability was evaluated using the C-index (95% CI), which was 0.961 (95% CI: 0.941–0.981), demonstrating excellent predictive accuracy. Calibration performance was assessed by the Hosmer-Lemeshow goodness-of-fit test ($p = 0.945$), indicating no significant difference between predicted and observed outcomes, thus confirming good model fit (Figure 4 B). DCA was used to evaluate the net benefit of clinical interventions based on model predictions across varying high-risk probability thresholds. Each curve represents the net benefit of interventions guided by a specific variable as the threshold changes. Here, “All” indicates intervening on the entire population, while “None” indicates no intervention (net benefit remains 0). The intersection point of the All and None curves represents the threshold at which intervening on all patients (regardless of risk) and intervening on none yield equivalent net benefits. As the high-risk probability threshold increases, the net benefit of model-guided interventions declines. Among the seven clinical

parameters, SAA-T2 exhibited the highest net benefit, indicating its highest clinical utility for guiding VAP risk stratification in AIS patients (Figure 4 C).

ROC analysis

ROC analysis was performed to evaluate the predictive efficiency of risk factors for VAP in AIS patients. We subsequently performed ROC-AUC analysis to evaluate the predictive performance of individual risk factors for VAP. The AUC (95% CI) values of age, time of mechanical ventilation, DBP, admission NIHSS score, hs-CRP, TC, and SAA-T2 were 0.639 (0.576–0.701), 0.629 (0.576–0.683), 0.724 (0.672–0.776), 0.755 (0.698–0.812), 0.617 (0.552–0.683), 0.543 (0.477–0.610), 0.885 (0.842–0.928), respectively (Table III and Figure 5).

ROC analysis was performed to evaluate the predictive efficiency of combined models for VAP in AIS patients. We further developed two combined models. Model 1 included six parameters: age, time of mechanical ventilation, DBP, admission NIHSS score, hs-CRP, and TC. Model 2 was constructed by adding SAA-T2 to Model 1. The diagnostic performance of Model 2 [AUC (95% CI) = 0.961 (0.942–0.980)] was significantly superior to that of Model 1 [AUC (95% CI) = 0.889 (0.853–0.924)], indicating that incorporating SAA-T2 substantially improved the predictive power of Model 1 for VAP in patients with AIS. No significant difference was observed between the diagnostic performance of Model 1 and SAA-T2 alone ($p = 0.905$) (Table IV and Figure 6). These results strongly support that SAA-T2 (cut-off value = 51.11 mg/l) is a robust and efficient clinical indicator for rapid diagnosis of VAP in AIS patients.

SAA level associated with poor prognosis of AIS patients

We evaluated 30-day mortality as a prognostic parameter for AIS patients undergoing endovas-

Table II. Univariate and multivariate analysis to identify VAP-related risk factors in patients with AIS

Characteristics	Total (N)	Univariate analysis		Multivariate analysis	
		Odds ratio (95% CI)	P-value	Odds ratio (95% CI)	P-value
Age [years]	387	1.078 (1.042–1.115)	< 0.001	1.096 (1.032–1.164)	0.003
Time of mechanical ventilation [days]	387				
≤ 2	260	Reference		Reference	
> 2	127	3.081 (1.940–4.891)	< 0.001	3.990 (1.721–9.247)	0.001
DBP [mm Hg]	387	1.337 (1.215–1.473)	< 0.001	1.174 (1.030–1.339)	0.017
Admission NIHSS	387	1.392 (1.276–1.517)	< 0.001	1.309 (1.145–1.497)	< 0.001
hs-CRP [mg/l]	387	1.111 (1.058–1.166)	< 0.001	1.143 (1.045–1.250)	0.004
TC [mmol/l]	387	1.577 (1.133–2.195)	0.007	2.297 (1.221–4.320)	0.010
LDL-C [mmol/l]	387	3.371 (2.001–5.678)	< 0.001	2.225 (0.838–5.910)	0.109
SAA-T2 [mg/l]	387	1.103 (1.080–1.125)	< 0.001	1.104 (1.076–1.132)	< 0.001

AIS – acute ischemic stroke, VAP – ventilator-associated pneumonia, DBP – diastolic blood pressure, hs-CRP – high-sensitivity C-reactive protein, TC – total cholesterol, LDL-C – low-density lipoprotein cholesterol, SAA – serum amyloid A.

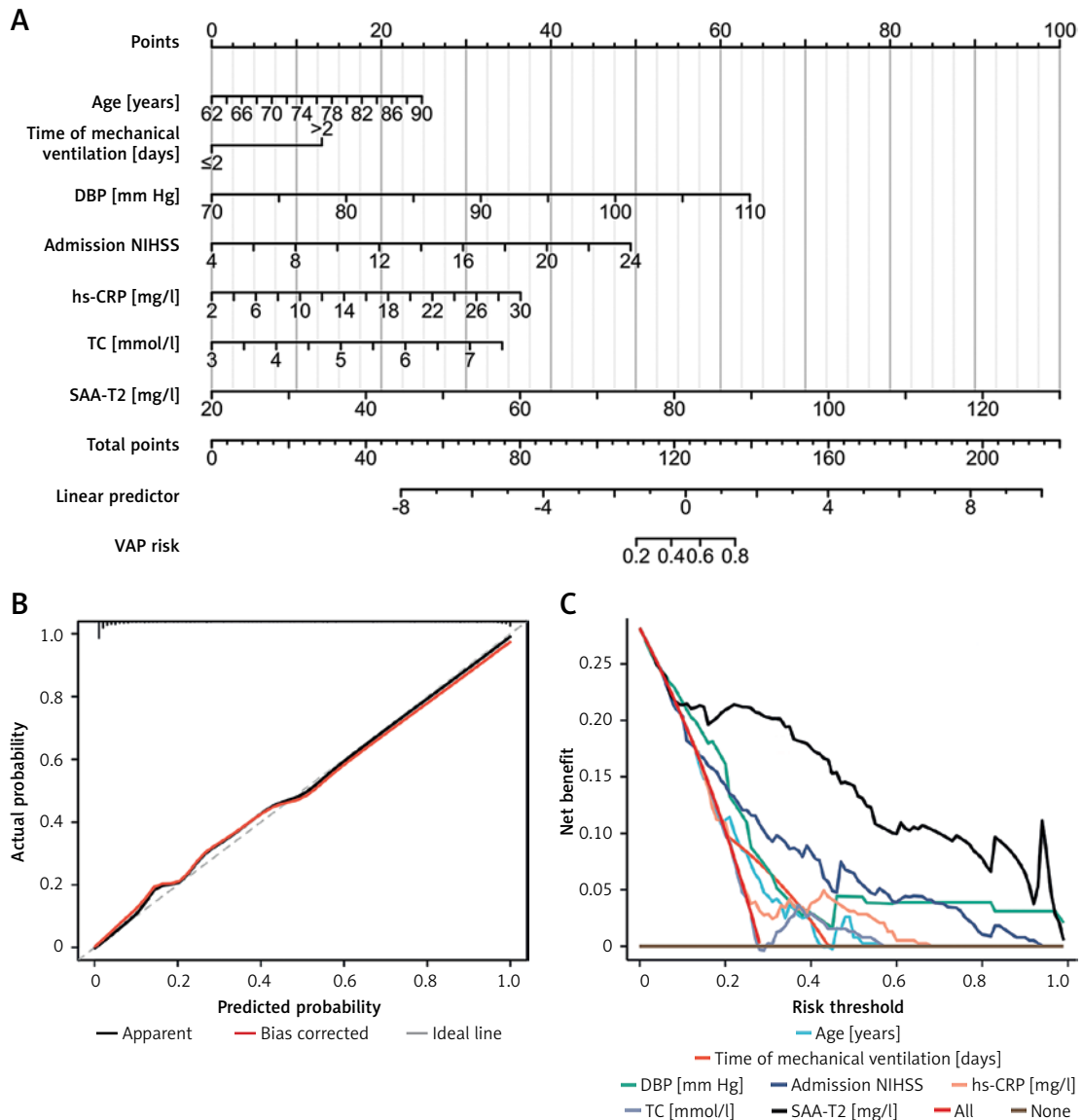


Figure 4. Establishment of a nomogram for predicting VAP of patients with AIS. We constructed a nomogram for predicting VAP in AIS patients using seven clinical parameters: age, time of mechanical ventilation, DBP, admission NIHSS score, hs-CRP, TC, and SAA-T2 (A). The nomogram model was verified with calibration curve with the Hosmer-Lemeshow goodness-of-fit test (B) and DCA (C)

VAP – ventilator-associated pneumonia, AIS – acute ischemic stroke, DBP – diastolic blood pressure, hs-CRP – high-sensitivity C-reactive protein, TC – total cholesterol, SAA – serum amyloid A.

cular therapy. The results revealed that non-survivors (patients who died within 30 days) exhibited significantly elevated serum SAA levels at three distinct time points compared to 30-day survivors: T1 (52.25 ± 20.78 mg/l vs. 41.43 ± 4.93 mg/l; $p < 0.001$), T2 (72.54 ± 25.99 mg/l vs. 44.77 ± 16.97 mg/l; $p < 0.001$), and T3 (71.74 ± 26.48 mg/l vs. 46.3 ± 17.42 mg/l; $p < 0.001$) (Figure 7).

Discussion

In summary, we evaluated SAA levels at three distinct time points and observed that SAA levels were significantly elevated at all three time points in VAP patients. Higher SAA levels were

associated with an elevated risk of VAP. Subsequent LASSO regression combined with logistic regression analysis identified SAA-T2 as the optimal clinical indicator for predicting VAP. Additionally, we developed a nomogram model incorporating seven clinical parameters to predict VAP, which demonstrated excellent discrimination [C-index (95% CI) = 0.961 (0.941–0.981)]. Although the combined model showed superior predictive performance, AUC (0.961; 95%: 0.942–0.980) and DCA analyses revealed that SAA-T2 alone exhibited the high diagnostic power and net benefit rate. We conclude that SAA-T2 may serve as a rapid and practical clinical indicator for

Table III. ROC analysis performed to evaluate the predictive efficiency of risk factors for VAP in AIS patients

Variables	AUC (95% CI)	Cut-off value	Sensitivity	Specificity	Accuracy
Age [years]	0.639 (0.576–0.701)	71.500	0.706	0.514	0.568
Time of mechanical ventilation [days]	0.629 (0.576–0.683)	0.500	0.514	0.745	0.680
DBP [mm Hg]	0.724 (0.672–0.776)	80.500	0.963	0.388	0.550
Admission NIHSS	0.755 (0.698–0.812)	13.001	0.651	0.755	0.726
hs-CRP [mg/l]	0.617 (0.552–0.683)	16.100	0.385	0.827	0.703
TC [mmol/l]	0.543 (0.477–0.610)	5.550	0.156	0.982	0.749
SAA-T2 [mg/l]	0.885 (0.842–0.928)	51.11	0.817	0.924	0.894

ROC – receiver operating characteristic curve, CI, confidence interval, AIS – acute ischemic stroke, VAP – ventilator-associated pneumonia, DBP – diastolic blood pressure, hs-CRP – high-sensitivity C-reactive protein, TC – total cholesterol, SAA – serum amyloid A.

predicting VAP in AIS patients, balancing accuracy with clinical feasibility.

VAP is a severe complication in patients with traumatic brain injury and AIS. Studies have reported that smoking, tracheostomy, blood trans-

fusion on admission, injury severity score (ISS), Glasgow Coma Scale (GCS) score, ICU length of stay, dysphagia, duration of mechanical ventilation, hemorrhagic conversion, Fazekas scale grade 2, admission DBP are associated with VAP

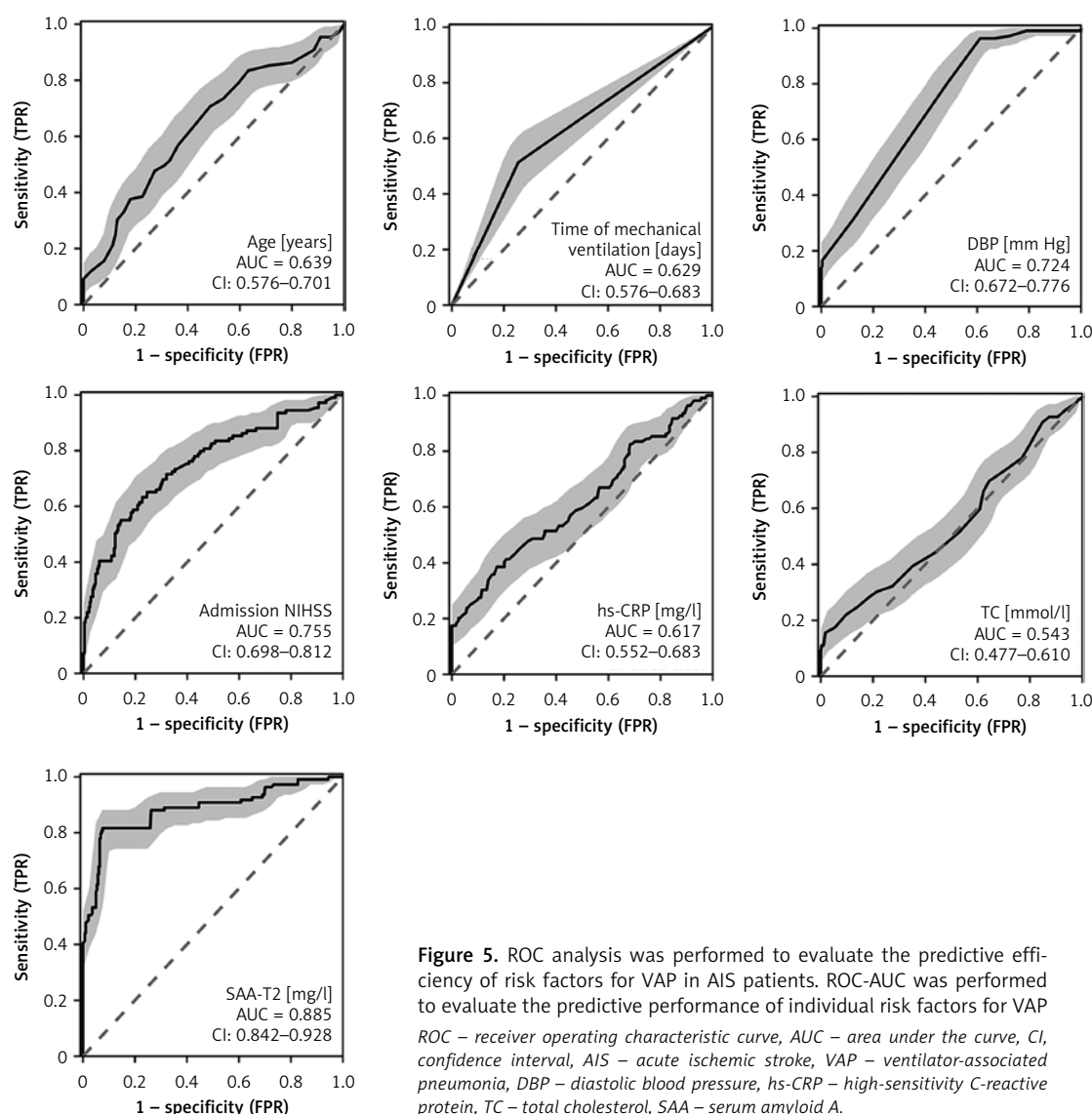


Figure 5. ROC analysis was performed to evaluate the predictive efficiency of risk factors for VAP in AIS patients. ROC-AUC was performed to evaluate the predictive performance of individual risk factors for VAP. ROC – receiver operating characteristic curve, AUC – area under the curve, CI, confidence interval, AIS – acute ischemic stroke, VAP – ventilator-associated pneumonia, DBP – diastolic blood pressure, hs-CRP – high-sensitivity C-reactive protein, TC – total cholesterol, SAA – serum amyloid A.

Table IV. ROC analysis performed to evaluate the predictive efficiency of different models for VAP in AIS patients

Variables	AUC (95% CI)	Cut-off value	Sensitivity	Specificity	Accuracy
[§] Model 1	0.889 (0.853–0.924)	–1.162	0.853	0.788	0.806
^{&} Model 2	0.961 (0.942–0.980)	–0.687	0.862	0.928	0.910
P-value	< 0.001				

[§]Model 1 was composed with 6 risk factors, including age, time of mechanical ventilation, DBP, admission NIHSS score, hs-CRP, and TC; [&]Model 2 was combined with Model 1 and SAA-T2. ROC – receiver operating characteristic curve, CI, confidence interval, AIS – acute ischemic stroke, VAP – ventilator-associated pneumonia, DBP – diastolic blood pressure, hs-CRP – high-sensitivity C-reactive protein, TC – total cholesterol, SAA – serum amyloid A.

development [2, 7, 25–27]. Frondelius *et al.* [7] developed a VAP prediction model incorporating duration of mechanical ventilation, length of ICU stay, blood transfusion, nutrition strategy, and presence of antibiotics, which demonstrated robust performance with an AUC of 0.88 (95% CI: 0.82–0.94), sensitivity of 0.72 (95% CI: 0.45–0.98), and specificity of 0.90 (95% CI: 0.85–0.94). Zhu *et al.* [2] developed a VAP nomogram model for patients with large vessel occlusion stroke, incorporating GCS score, ICU length of stay, dysphagia, Fazekas scale grade 2, and admission diastolic blood pressure, which demonstrated strong predictive accuracy with an AUC of 0.862 (95% CI: 0.810–0.914). Li and Shang [28] identified ICU length of stay, surgery, CRP levels, and number of reintubations as independent risk factors for VAP in elderly ICU patients requiring mechanical ventilation. The predictive model demonstrated robust performance, with AUC values of 0.859 (95% CI: 0.828–0.890) in the training set and 0.813 (95% CI: 0.700–0.850) in the validation set for predicting VAP [28]. In our study, a VAP prediction model

incorporating seven multimodal clinical parameters, including age, mechanical ventilation duration, DBP, admission NIHSS score, hs-CRP, TC, and SAA-T2, was developed, achieving exceptional predictive performance with an AUC (95% CI) of 0.961 (0.942–0.980). Based on single-parameter AUC values and DCA, SAA-T2 demonstrated the highest diagnostic efficacy and net clinical benefit. Further, the seven parameters were split into two models: Model 1 (age, mechanical ventilation duration, DBP, NIHSS score, hs-CRP, TC) and SAA-T2 alone. The diagnostic performance of Model 1 and SAA-T2 yielded AUCs (95% CI) of 0.889 (0.853–0.924) and 0.885 (0.842–0.928), respectively, with no statistically significant difference between them. Notably, the addition of SAA-T2 to Model 1 significantly enhanced its diagnostic accuracy for VAP. These findings suggest that SAA-T2 serves as a rapid and concise biomarker for predicting post-operative VAP in AIS patients, while its combination with other clinical parameters (age, mechanical ventilation duration, DBP, NIHSS score, hs-CRP, TC) achieves superior performance.

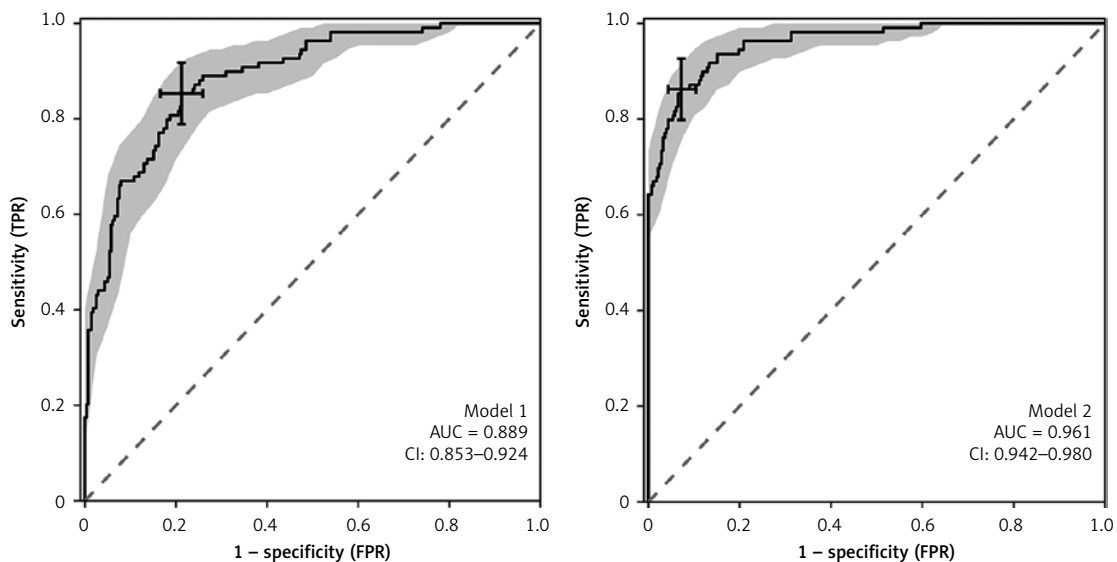


Figure 6. ROC analysis was performed to evaluate the predictive efficiency of combined models for VAP in AIS patients. Two combined models were established as follows: Model 1 included six parameters: age, time of mechanical ventilation, DBP, admission NIHSS score, hs-CRP, and TC; Model 2 was constructed by adding SAA-T2 to Model 1

ROC – receiver operating characteristic curve, AUC – area under the curve, CI, confidence interval, AIS – acute ischemic stroke, VAP – ventilator-associated pneumonia, DBP – diastolic blood pressure, hs-CRP – high-sensitivity C-reactive protein, TC – total cholesterol, SAA – serum amyloid A.

A few studies have suggested a potential association between SAA and VAP [22, 23, 29]. Specifically, baseline SAA levels at enrollment were significantly higher in the early VAP group compared to the non-early VAP group. At a cut-off value of 224 mg/ml, baseline SAA demonstrated 84% sensitivity and 72.7% specificity for predicting early VAP, with an AUC of 0.76, highlighting its discriminative capacity in this clinical setting [29]. Lin *et al.* [23] discovered that in patients undergoing abdominal surgery, SAA levels at 24 h postoperatively demonstrated moderate predictive utility for VAP, with an AUC of 0.68, sensitivity of 73.24%, and specificity of 55.16%. Abo-Hagar *et al.* [22] reported that SAA demonstrated exceptional diagnostic performance for predicting VAP in mechanically ventilated pediatric patients, achieving an AUC of 0.97 (95% CI: 0.86–1.00), sensitivity of 100%, and specificity of 93.1%. These results underscore the potential of SAA as a highly reliable biomarker for early VAP detection in critically ill children requiring mechanical ventilation [22]. In our study, we focused on the association between SAA and VAP in elderly AIS patients undergoing general anesthesia and endovascular therapy. Although there were differences in SAA among the three time points, after LASSO and logistic regression analysis, SAA-T2 was found to be an independent risk factor for VAP. Therefore, SAA-T2 was selected as a predictor of VAP. Since SAA-T2 is a postoperative indicator, it indicates that the acute-phase inflammatory response after surgery can better reflect the risk of VAP. We observed a significant increase in SAA levels at 48 h postoperatively compared to preoperative baseline level. Notably, postoperative 48-hour SAA levels emerged as the strongest independent predictor of VAP, demonstrating an AUC of 0.885 (95% CI: 0.842–0.928), sensitivity of 81.7%, and specificity of 92.4%. While our findings, alongside existing evidence [22, 23, 29], highlight the clinical utility of SAA in VAP prediction, its diagnostic performance may vary across populations and disease contexts.

Plasma SAA levels at 24 h after EVT serve as a significant predictor of poor functional outcome at 3 months in stroke patients [12]. Moreover, SAA levels at 24 h post-EVT were significantly higher compared to pre-EVT SAA levels, and SAA levels at different time points exhibit distinct prognostic values in stroke patients [12]. Chang *et al.* [18] also found that SAA levels were up-regulated during hospitalization in AIS patients after intravenous thrombolysis. No previous studies have reported on the dynamic changes in SAA levels among AIS patients complicated by VAP. This gap underscores the novelty of our investigation, which systematically evaluates temporal SAA trajectories in this high-risk population to uncover its potential role in early VAP detection and prognosis. We found

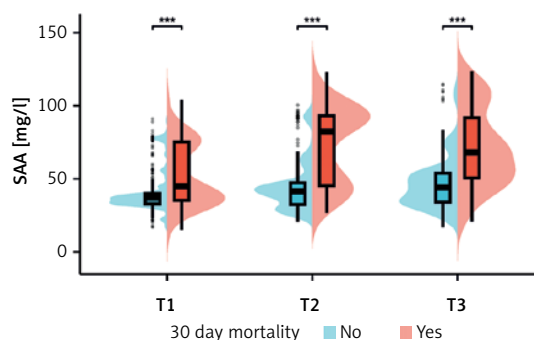


Figure 7. SAA level associated with poor prognosis of AIS patients. We evaluated 30-day mortality as a prognostic parameter for AIS patients undergoing endovascular therapy. Differences in SAA levels were evaluated at three distinct time points between 30-day survivors and non-survivors

AIS – acute ischemic stroke, VAP – ventilator-associated pneumonia, SAA – serum amyloid A, T1 – pre-operation, T2 – 48 hours post-mechanical ventilation, T3 – 96 hours post-mechanical ventilation. *** $P < 0.001$.

that SAA levels at three distinct time points were significantly associated with 30-day mortality in AIS patients. Compared to survivors, patients who died within 30 days exhibited markedly elevated SAA levels. Our findings, consistent with prior evidence [12, 18], confirm that SAA may serve as a robust prognostic biomarker for adverse outcomes in AIS, reflecting its potential role in stratifying mortality risk and guiding early intervention strategies.

Our study has several limitations. First, the relatively small sample size may introduce potential bias in the results. Second, we only collected SAA data at three time points in AIS patients, lacking comprehensive measurements throughout the hospitalization period. Third, we focused solely on 30-day prognosis and did not implement a long-term follow-up plan. In future studies, we will conduct extended follow-up to further explore the relationship between SAA and long-term outcomes in VAP patients.

In conclusion, we developed a highly sensitive predictive model based on seven clinical parameters to forecast postoperative VAP in AIS patients. Among these parameters, SAA demonstrated the highest diagnostic efficacy and played a pivotal role in ensuring model stability. We propose that postoperative 48-hour SAA levels could serve as a rapid and sensitive indicator for estimating the likelihood of VAP in AIS patients, particularly when additional clinical parameters are unavailable.

Funding

No external funding.

Ethical approval

The protocol adhered to the ethical principles of the Declaration of Helsinki (2013 revision) and

followed the TRIPOD guidelines (Transparent Reporting of a multivariable prediction model for Individual Prognosis Or Diagnosis) [25], with institutional ethics committee approval obtained prior to data collection (Approval number: 202409025).

Conflict of interest

The authors declare no conflict of interest.

References

1. Yang S, Li K, Huang Z, et al. Risk factors of acute ischemic stroke and the role of angiotensin I in predicting prognosis of patients undergoing endovascular thrombectomy. *Front Endocrinol (Lausanne)* 2024; 15: 1388871.
2. Zhu H, Liang W, Zhu J, et al. Nomogram to predict ventilator-associated pneumonia in large vessel occlusion stroke after endovascular treatment: a retrospective study. *Front Neurol* 2024; 15: 1351458.
3. Metersky ML, Kalil AC. Management of ventilator-associated pneumonia: guidelines. *Infect Dis Clin North Am* 2024; 38: 87-101.
4. Frondelius T, Atkova I, Miettinen J, Rello J, Jansson MM. Diagnostic and prognostic prediction models in ventilator-associated pneumonia: systematic review and meta-analysis of prediction modelling studies. *J Crit Care* 2022; 67: 44-56.
5. Shi Y, Huang Y, Zhang TT, et al. Chinese guidelines for the diagnosis and treatment of hospital-acquired pneumonia and ventilator-associated pneumonia in adults (2018 Edition). *J Thorac Dis* 2019; 11: 2581-616.
6. Fernando SM, Tran A, Cheng W, et al. Diagnosis of ventilator-associated pneumonia in critically ill adult patients-a systematic review and meta-analysis. *Intensive Care Med* 2020; 46: 1170-9.
7. Frondelius T, Atkova I, Miettinen J, et al. Early prediction of ventilator-associated pneumonia with machine learning models: a systematic review and meta-analysis of prediction model performance. *Eur J Intern Med* 2024; 121: 76-87.
8. Li S, Shang L, Han X, Kang H, Li W. Construction and validation of a predictive model for the risk of ventilator-associated pneumonia in elderly ICU patients. *Can Respir J* 2023; 2023: 7665184.
9. Lin Q, Fu F, Shen L, Zhu B. Pentraxin 3 in the assessment of ventilator-associated pneumonia: an early marker of severity. *Heart Lung* 2013; 42: 139-45.
10. Bilgin H, Haliloglu M, Yaman A, et al. Sequential measurements of pentraxin 3 serum levels in patients with ventilator-associated pneumonia: a nested case-control study. *Can J Infect Dis Med Microbiol* 2018; 2018: 4074169.
11. Howroyd F, Chacko C, MacDuff A, et al. Ventilator-associated pneumonia: pathobiological heterogeneity and diagnostic challenges. *Nat Commun* 2024; 15: 6447.
12. Yeh SJ, Chen CH, Lin YH, et al. Serum amyloid A predicts poor functional outcome in patients with ischemic stroke receiving endovascular thrombectomy: a case control study. *J Neurointerv Surg* 2023; 15: 75-81.
13. Saiki O, Uda H. Ratio of serum amyloid A to C-reactive protein is constant in the same patients but differs greatly between patients with inflammatory diseases. *Scand J Immunol* 2022; 95: e13121.
14. Li L, Liu H, Zhang Q, et al. Serum amyloid A and risks of all-cause and cardiovascular mortality in chronic kidney disease: a systematic review and dose-response meta-analysis. *Ren Fail* 2023; 45: 2250877.
15. Huang XB, Zhao S, Liu ZY, Xu YY, Deng F. Serum amyloid A as a biomarker for immunoglobulin resistance in Kawasaki disease. *Ann Med* 2023; 55: 2264315.
16. Shridas P, Patrick AC, Tannock LR. Role of serum amyloid A in abdominal aortic aneurysm and related cardiovascular diseases. *Biomolecules* 2021; 11: 1883.
17. Zhang Y, Feng Y, Zuo J, et al. Elevated serum amyloid A is associated with cognitive impairment in ischemic stroke patients. *Front Neurol* 2021; 12: 789204.
18. Chang Q, Li Y, Xue M, et al. Serum amyloid A is a potential predictor of prognosis in acute ischemic stroke patients after intravenous thrombolysis. *Front Neurol* 2023; 14: 1219604.
19. Zhang P, Han R, Zhang A, et al. Association between serum amyloid A level and white matter hyperintensity burden: a cross-sectional analysis in patients with acute ischemic stroke. *Neurol Ther* 2023; 12: 161-75.
20. Schweizer J, Bustamante A, Lapiere-Fétau V, et al. SAA (serum amyloid A): a novel predictor of stroke-associated infections. *Stroke* 2020; 51: 3523-30.
21. Gil LA, Krattinger-Turbatu L, Schweizer J, Katan M, Sanchez JC. A panel comprising serum amyloid a, white blood cells and nihss for the triage of patients at low risk of post-stroke infection. *Diagnostics (Basel)* 2021; 11: 1070.
22. Abo-Hagar HH, Abo-Elezz AAE, Mehrez M, Mabrouk MM, Elshora OA. Diagnostic efficacy of serum amyloid A protein and soluble intercellular adhesion molecule 1 in pediatric ventilator-associated pneumonia. *J Intensive Care Med* 2019; 34: 503-10.
23. Lin J, Kang Z, Lin Y, Han L, Li S. Predictive values of serum amyloid A, toll-like receptor 4, and sTREM-1 for ventilator-associated pneumonia in elderly patients undergoing abdominal surgery with tracheal intubation and general anesthesia. *World J Surg* 2024; 48: 2383-90.
24. Powers WJ, Rabinstein AA, Ackerson T, et al. 2018 Guidelines for the early management of patients with acute ischemic stroke: a guideline for healthcare professionals from the American Heart Association/American Stroke Association. *Stroke* 2018; 49: e46-110.
25. Collins GS, Reitsma JB, Altman DG, Moons KG. Transparent reporting of a multivariable prediction model for individual prognosis or diagnosis (TRIPOD): the TRIPOD statement. *BMJ* 2015; 350: g7594.
26. Li Y, Liu C, Xiao W, Song T, Wang S. Incidence, risk factors, and outcomes of ventilator-associated pneumonia in traumatic brain injury: a meta-analysis. *Neurocrit Care* 2020; 32: 272-85.
27. Patel UK, Kodumuri N, Dave M, et al. Stroke-associated pneumonia: a retrospective study of risk factors and outcomes. *Neurologist* 2020; 25: 39-48.
28. Li S, Shang L. Construction and validation of a predictive model for the risk of ventilator-associated pneumonia in elderly ICU patients. *Can Respir J* 2023; 2023: 7665184.
29. Pelosi P, Barassi A, Severgnini P, et al. Prognostic role of clinical and laboratory criteria to identify early ventilator-associated pneumonia in brain injury. *Chest* 2008; 134: 101-8.