

Bidirectional associations of depression, anxiety, sleep disorders, and constipation: insights from Mendelian randomization

Qi Zheng¹, Yingjian Deng², Yajuan Ji¹, Chunmei Shao², Qi Liu¹, Chenyun Zhang¹, Tiantian Zhang¹, Xinchao Chen^{1,3*}

¹Department of Psychiatry, Xiamen Xianyue Hospital, Xianyue Hospital Affiliated with Xiamen Medical College, Fujian Psychiatric Center, Fujian Clinical Research Center for Mental Disorders, Xiamen, Fujian, China

²Xiamen Cardiovascular Hospital of Xiamen University, Xiamen University, Xiamen, Fujian, China

³School of Clinical Medicine, Fujian Medical University, Fuzhou, Fujian, China

Submitted: 23 March 2025; **Accepted:** 27 June 2025

Online publication: 2 July 2025

Arch Med Sci 2026; 22 (2): 1001–1010

DOI: <https://doi.org/10.5114/aoms/207613>

Copyright © 2025 Termedia & Banach

***Corresponding author:**

Xinchao Chen
School of Clinical
Medicine
Fujian Medical University
Fuzhou, Fujian 350122
Department of Psychiatry
Xiamen Xianyue Hospital
Xianyue Hospital Affiliated
with Xiamen
Medical College
Fujian Psychiatric Center
Fujian Clinical
Research Center for
Mental Disorders
Xiamen, Fujian 361003
China
E-mail: psycxc76@fjmu.edu.cn

Abstract

Introduction: Mental health disorders and constipation are increasingly prevalent health problems worldwide. Previous studies have reported bidirectional associations between depression, anxiety, sleep disorders, and constipation. However, observational studies have yielded inconsistent results.

Material and methods: The associations were examined through a two-sample, bidirectional, univariable, and multivariable Mendelian randomization (MR) study. Summary-level data were obtained from the UK Biobank, large consortia, and the FinnGen consortium. The inverse-variance weighted method was applied as the principal analytical approach, and other additional MR methods (maximum likelihood, MR-RAPS, and MR-PRESSO) were used for sensitivity analyses. Multivariable MR analysis was performed to assess the independent effects of selected exposures.

Results: The univariable MR analyses indicated that major depression (MD) (OR = 1.28; 95% CI: 1.12–1.46), broad depression (BD) (OR = 3.72; 95% CI: 1.55–8.97), depressed affect (OR = 1.41; 95% CI: 1.13–1.76), and worry (OR = 1.42; 95% CI: 1.13–1.77) were associated with an increased risk of constipation. There was no evidence supporting the causal effects of anxious feelings, sleep duration, and sleeplessness on constipation. The reverse MR analyses found no reverse causal association of constipation with depression, anxiety, and sleep disorders. In multivariable MR, only MD still had a robust causal association with constipation, while the effect of worry was attenuated to null, and the effects of BD and depressed affect were completely reversed.

Conclusions: MD is causally associated with constipation, and worry might also increase the risk of constipation. Future studies are needed to confirm the causality and elucidate the underlying mechanisms.

Key words: depression, anxiety, sleep, constipation, causal association, Mendelian randomization.

Introduction

Mental health disorders are among the leading causes of disease burden worldwide, accounting for 970 million cases in 2019 [1]. Depression and anxiety disorders are the most common mental health disorders, with an estimated 322 million and 264 million people worldwide affected, respectively [2, 3]. Globally, sleep disorders have become a major public health problem with an increasing prevalence [4], and a large body of research has shown that depression and anxiety are frequently comorbid with sleep disorders [5], which threaten people’s health and quality of life and impose an enormous social and economic burden [6, 7].

Constipation is one of the most common functional gastrointestinal diseases, affecting about 2.5–79% of adults worldwide [8]. Previous studies have shown that depression, anxiety, and sleep disorders are associated with an increased risk of constipation [9–11], and patients with constipation also seem to be at a higher risk of depression, anxiety, and sleep disorders [12–14]. However, some other studies have yielded conflicting results [15–18]. The existing observational studies usually have a limited sample size, and results from observational studies are likely to be affected by causality bias and confounding factors, making it impossible to determine causal associations.

In recent years, Mendelian randomization (MR) has been widely used to investigate causal associations [19, 20]. Using randomly allocated genetic variants as instruments, the MR approach could avoid biases caused by residual confounding and reverse causality on the basis of three stringent assumptions [21, 22]. Multivariable MR (MVMR) is a recently developed extension of MR that allows separate but correlated traits to be assessed simultaneously by clumping and harmonizing genetic variants from each exposure into the same model [23–25].

In the present study, we used the genetic summary statistics from the largest genome-wide association studies (GWASs) to investigate the

bidirectional associations of depression (major depression (MD), broad depression (BD), and depressed affect), anxiety (anxious feelings, worry), and sleep disorders (sleep duration, sleeplessness) with constipation. In this study, univariable MR analysis was first performed to estimate the direction of the associations, and MVMR analyses were then performed to assess the independent effects of correlated exposures on the outcome.

Material and methods

Study design

This is a two-sample, bidirectional MR study to assess the bidirectional causal associations of depression, anxiety, and sleep disorders with constipation (Figure 1). This study included three depression traits (MD, BD, depressed affect), two anxiety traits (anxious feelings, worry), and two sleep disorder traits (sleep duration, sleeplessness). The genetic summary statistics for each trait were extracted from different GWASs. Genetic variants utilized as instruments for MR analyses rely on three assumptions: (I) the genetic instruments must be associated with the exposure; (II) the genetic instruments are independent of confounding factors; (III) the genetic instruments influence the outcome only through the exposure [26]. We also conducted reverse MR with constipation as the exposure and other selected traits as the outcomes. Given the considerable clinical and genetic overlap between depression, anxiety, and sleep disorders [27, 28], we further performed MVMR analyses to estimate the independent effects of correlated mental disorders and sleep disorders on constipation.

Data sources

In this MR study, GWAS summary data used in the analyses were derived from the IEU OpenGWAS project (<https://gwas.mrcieu.ac.uk>). To evaluate the effects of depression on constipation, we used three depression subtypes: MD

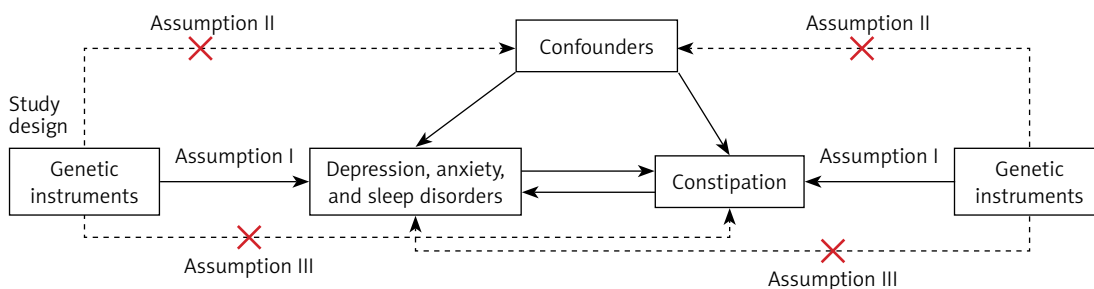


Figure 1. Overview and assumptions of the Mendelian randomization study. Genetic variants utilized as instruments for Mendelian randomization analysis rely on three assumptions: (I) the genetic instruments must be associated with the exposure; (II) the genetic instruments are independent of confounding factors; (III) the genetic instruments influence the outcome only through the exposure

(Dataset ID: ieu-b-102), BD (Dataset ID: ebi-a-GCST005902), and depressed affect (Dataset ID: ebi-a-GCST006475) (Supplementary Table S1). The summary data for MD, including 170,756 cases and 329,443 controls, were generated from the UK Biobank and the Psychiatric Genomics Consortium (PGC) [29]. The GWAS summary statistics for BD (113,769 cases and 208,811 controls) and depressed affect (357,957 individuals) were generated from the UK Biobank data [30, 31]. In the UK Biobank, BD was defined by self-reported past help-seeking behaviors due to personal mental health difficulties, and MD was identified from hospital admission records and coded using the *International Classification of Diseases 10th revision (ICD-10)* [31]. Summed scores on four Revised Eysenck Personality Questionnaire items (“Does your mood often go up and down?”; “Do you ever feel ‘just miserable’ for no reason?”; “Do you often feel ‘fed-up?’”; “Do you often feel lonely?”) were obtained for the depressed affect cluster [30]. In the PGC, the diagnosis of lifetime MD based on the *Diagnostic and Statistical Manual of Mental Disorders, Fourth Edition (DSM-IV)* was determined using structured diagnostic instruments from clinician-completed checklists or direct assessments by trained interviewers [32]. Compared to the less restrictive BD or depressed affect diagnostic criteria, the determination of MD was more stringent. Previous studies have indicated that self-reported depression was genetically highly associated with clinically diagnosed depression [33, 34].

Subtypes of anxiety used to evaluate the relationship between anxiety and constipation included anxious feelings (Dataset ID: ukb-b-6519) and worry (Dataset ID: ebi-a-GCST006478) (Supplementary Table S1). Worry, a cardinal feature of generalized anxiety disorder, is a coping mechanism for possible threats in the future [35]. The GWAS summary statistics for anxious feelings (255,812 cases and 194,953 controls) and worry (348,219 individuals) were sourced from the UK Biobank [30], and the diagnoses were based on questionnaires. For instance, to assess anxiety disorders, participants from the UK Biobank participants were asked: “Have you been diagnosed with one or more of the following mental health problems by a professional, even if you don’t have it currently?” [36]. Similarly, summed scores on four other Eysenck Personality Questionnaire-Revised Short Scale (EPQ-RS) items (“Would you call yourself a nervous person?”; “Are you a worrier?”; “Would you call yourself tense or ‘highly strung?’”; “Do you suffer from ‘nerves?’”) were obtained for the worry cluster [30]. The subtypes of sleep disorders included in this study were sleep duration (460,099 individuals; Dataset ID: ukb-b-4424) and sleeplessness (336,965 individuals; Dataset

ID: ukb-a-13) (Supplementary Table S1). Sleep duration was self-reported by participants with the standardized question: “About how many hours of sleep do you get in every 24 h? (Please include naps)” [37]. Self-reported sleeplessness was assessed using the question: “Do you have trouble falling asleep at night or do you wake up in the middle of the night?”; participants who responded with “usually” were classified as having frequent sleeplessness symptoms, while the other participants were classified as the control group [38].

Summary statistics on constipation (Dataset ID: finn-b-K11_CONSTIPATION), including 17,246 cases and 201,546 controls, were obtained from the latest FinnGen studies [39]. The FinnGen project was approved by the Coordinating Ethics Committee of the Hospital District of Helsinki and Uusimaa (No: HUS/990/2017), and all participants in these studies had written informed consent [39]. The UK Biobank studies were reviewed and approved by the North West Multi-Centre Research Ethics Committee (No: 11/NW/0382) [40]; participants included in these studies were predominantly of European ancestry.

Genetic instrument selection

An overview and flow diagram of genetic instrument selection is shown in Figure 2. Independent single nucleotide polymorphisms (SNPs) with genome-wide significance ($p < 5 \times 10^{-8}$) were selected as the instrumental variables (IVs). Stringent clumping criteria (r^2 cutoff = 0.001, clumping window = 10,000 kb) were used to ensure the independence of SNPs. The strength of IVs was measured using F-statistics, where an F-statistic greater than 10 indicated greater strength of the instrument [41]. The PhenoScanner database was then searched for SNP-phenotype associations to remove the SNPs correlated with mediators or confounders [42, 43]. Several potential confounding factors for constipation, including common gastrointestinal disorders (such as Crohn’s disease and intestinal tumors), sedentary behavior, and inadequate fiber and fluid intake, were excluded. We also removed palindromic SNPs when harmonizing the effects of SNPs on each outcome and exposure. The Mendelian Randomization Pleiotropy Residual Sum and Outlier (MR-PRESSO) test was further performed to identify and remove SNPs with horizontal pleiotropic effects [44]. Eventually, we extracted 46 SNPs for MD, 16 SNPs for BD, 57 SNPs for depressed affect, 63 SNPs for anxious feelings, 59 SNPs for worry, 67 SNPs for sleep duration, and 29 SNPs for sleeplessness (Supplementary Excel File 1). For the reversed direction, we only found one SNP (rs185003380, $p = 4.976E-08$) associated with constipation with a p -value of $< 5 \times 10^{-8}$. Therefore, we adopted a less stringent

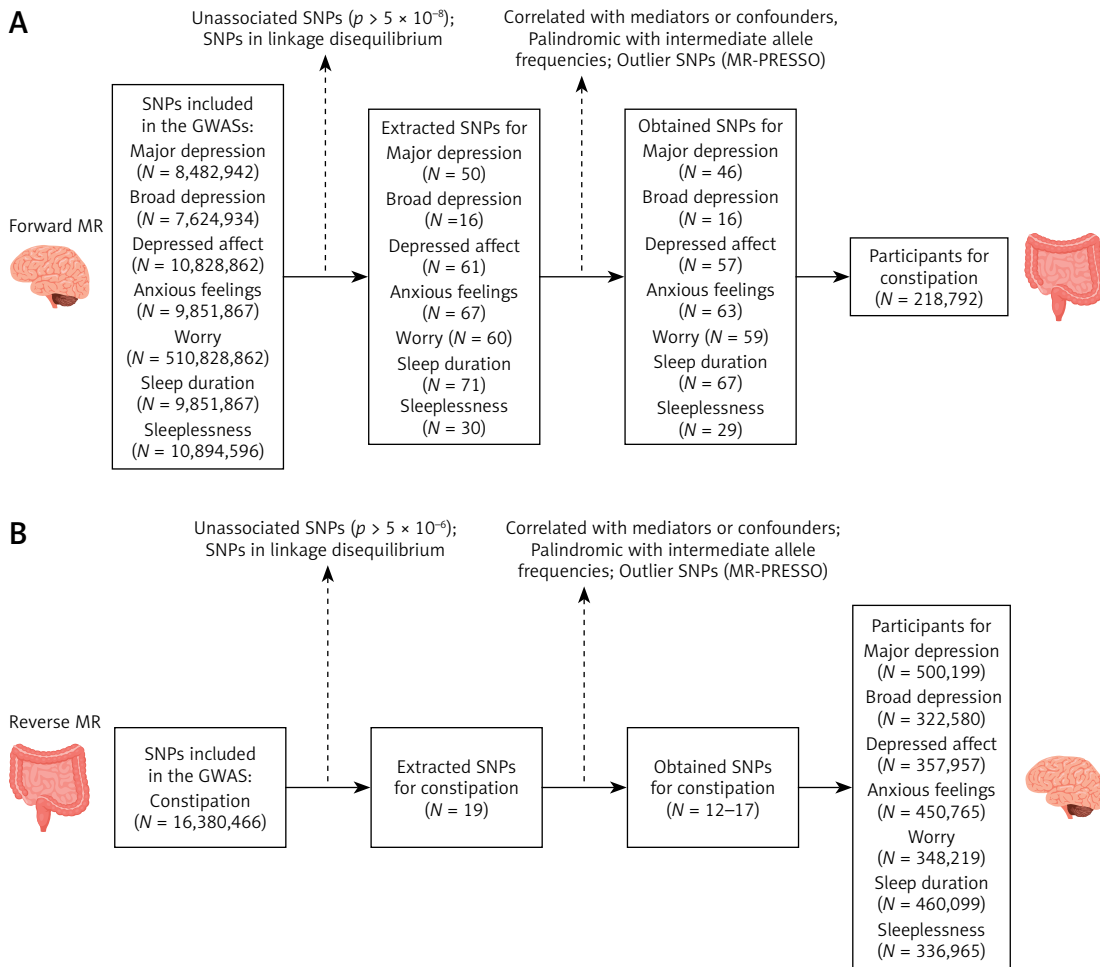


Figure 2. Overview and flow diagram of genetic instrument selection. **A** – Flow diagram of forward Mendelian randomization. **B** – Flow diagram of reverse Mendelian randomization

MR – Mendelian randomization, SNPs – single nucleotide polymorphisms, GWAS – genome-wide association study, MR-PRESSO – Mendelian Randomization Pleiotropy Residual Sum and Outlier.

threshold ($p < 5 \times 10^{-6}$), and extracted 19 SNPs for constipation. The F-statistics of all selected SNPs were greater than 10, suggesting that weak instrument bias is unlikely [45] (Supplementary Excel File 1). The MVMR analyses incorporated genetic variants obtained from selected traits, which extracted 156 SNPs for analysis.

Statistical analysis

In the present study, the inverse-variance weighted (IVW) method and MVMR were applied as the principal analytical approaches. In univariable MR analysis, the random-effects IVW method was preferentially applied in the presence of heterogeneity (Cochran’s Q test $p < 0.05$); otherwise, the fixed-effects IVW method was preferentially used. Despite the IVW method being an authoritative method, the results from other methods (maximum likelihood [46], Robust Adjusted Profile Score (MR-RAPS) [47], and MR-PRESSO [44]) with different assumptions were also assessed

for sensitivity and to ensure the robustness of the results. Given that genetic instruments for different anxiety and depression traits are correlated [48, 49], we further performed MVMR analyses to estimate the independent associations between each trait of interest and constipation. For sensitivity analyses, the IVW (Q) method was used to identify heterogeneity, the MR-PRESSO global test and MR-Egger intercept test were used to detect potential horizontal pleiotropy, and leave-one-out analysis was performed by excluding a single SNP to assess the robustness of the results [50]. In univariable MR analyses, the association with a p -value of < 0.007 (Bonferroni correction $p = 0.05/7 = 0.007$) was considered a significant association, and the association with $p < 0.05$ was considered suggestive. In MVMR models, a p -value of < 0.05 was considered significant. All the MR analyses were conducted using the TwoSampleMR (version 0.5.6) [51], MR-PRESSO [44], and mr.raps [52] packages in the R software (version 4.3.1).

Results

Univariable MR analyses

Significant evidence supporting the causal effects of depression on constipation was found. The univariable MR analyses indicated that genetically determined MD (IVW: odds ratio [OR] = 1.28; 95% confidence interval [CI]: 1.12–1.46; $p = 2.68E-04$), BD (IVW: OR = 3.72; 95% CI: 1.55–8.97; $p = 3.31E-03$), and depressed affect (IVW: OR = 1.41; 95% CI: 1.13–1.76; $p = 2.65E-03$) were significantly associated with a high risk of constipation (Figure 3 A). The result of MD was replicated

by maximum likelihood ($p = 2.42E-04$), MR-RAPS ($p = 4.93E-04$), and MR-PRESSO ($p = 4.39E-04$); the result of BD was replicated by maximum likelihood ($p = 3.00E-03$); and the result of depressed affect was also replicated by maximum likelihood ($p = 2.47E-03$), MR-RAPS ($p = 2.81E-03$), and MR-PRESSO ($p = 3.12E-03$) (Supplementary Table SII). In the reverse MR analyses, no significant associations were found between constipation and the risk of MD, BD, and depressed affect (Figure 3 B, Supplementary Table SIII).

Genetically determined worry was also significantly associated with an increased risk of con-

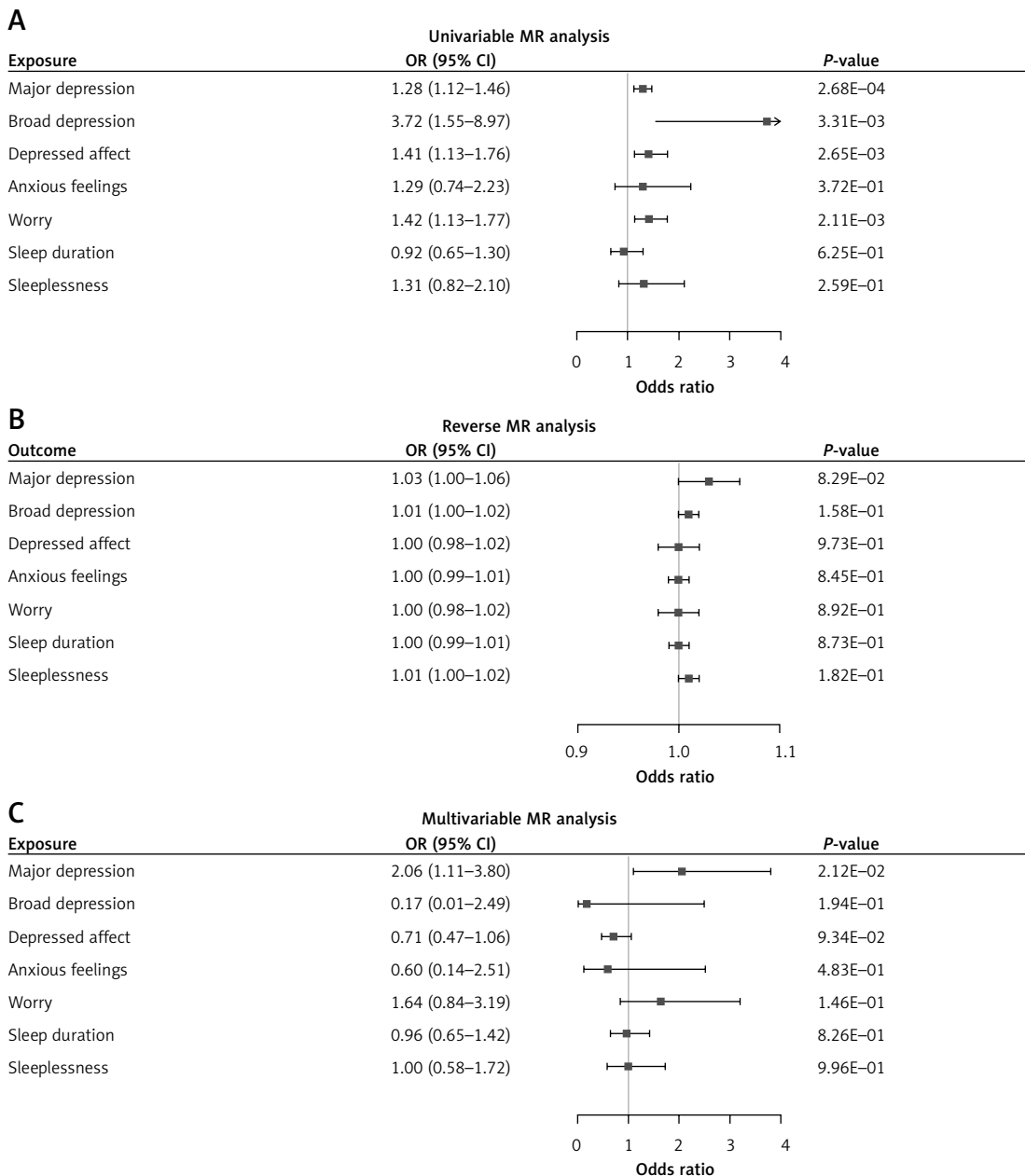


Figure 3. MR estimates of the associations of depression, anxiety, and sleep disorders with constipation. **A** – Univariable MR analysis; **B** – reverse MR analysis; **C** – multivariable MR analysis; MR, Mendelian randomization; odds ratio (OR) and 95% confidence intervals (95% CI) were derived using the inverse-variance weighted method

Table 1. Heterogeneity and horizontal pleiotropy estimates of the Mendelian randomization analyses

Exposure	Heterogeneity test (IVW)		Heterogeneity test (MR-Egger)		MR-PRESSO global test		MR Egger intercept test		Outcome	Heterogeneity test (IVW)		Heterogeneity test (MR-Egger)		MR-PRESSO global test		MR Egger intercept test	
	Q	P-value	Q	P-value	P-value	I	SE	P-value		Q	P-value	Q	P-value	P-value	I	SE	P-value
Major depression	42.57	0.49	42.18	0.46	0.54	0.01	0.01	0.54	Major depression	16.38	0.43	15.93	0.39	0.44	< 0.01	< 0.01	0.53
Broad depression	17.11	0.19	16.98	0.15	0.25	-0.01	0.02	0.77	Broad depression	16.40	0.29	15.72	0.26	0.31	< 0.01	< 0.01	0.47
Depressed affect	59.91	0.27	59.87	0.24	0.68	< 0.01	0.01	0.84	Depressed affect	19.84	0.07	17.37	0.10	0.08	< 0.01	< 0.01	0.24
Anxious feelings	77.53	0.04	77.53	0.04	0.04	< 0.01	0.01	0.94	Anxious feelings	31.47	0.01	29.27	0.01	< 0.01	< 0.01	< 0.01	0.32
Worry	51.87	0.36	51.13	0.35	0.24	0.01	0.01	0.41	Worry	8.58	0.28	7.56	0.27	0.02	< 0.01	< 0.01	0.40
Sleep duration	92.36	0.01	91.68	0.01	0.01	0.01	0.01	0.50	Sleep duration	19.09	0.26	18.51	0.24	0.30	< 0.01	< 0.01	0.50
Sleeplessness	37.13	0.07	36.93	0.06	0.13	< 0.01	0.01	0.72	Sleeplessness	17.83	0.33	17.80	0.27	0.38	< 0.01	< 0.01	0.88

IVW – inverse-variance weighted, MR-Egger – Mendelian Randomization-Egger, MR-PRESSO – Mendelian Randomization Pleiotropy Residual Sum and Outlier.

stipation in univariable MR analyses (IVW: OR = 1.42; 95% CI: 1.13–1.77; $p = 2.11E-03$) (Figure 3 A), which was replicated by maximum likelihood (OR = 1.43; 95% CI: 1.14–1.79; $p = 1.89E-03$) (Supplementary Table SII). Similarly, MR-RAPS and MR-PRESSO also indicated a suggestive association between worry and the risk of constipation. No evidence was found for the effects of constipation on worry, and no significant or suggestive association was found between anxious feelings and constipation (Figure 3 B, Supplementary Table SIII).

The results of sleep duration and sleeplessness are presented in Figures 3 A and B. In univariable MR analyses, we found a negative correlation between sleep duration and constipation, and a positive correlation between sleeplessness and constipation; however, neither of the correlations was statistically significant. The reverse MR analyses also suggested no significant relationship between constipation and the risk of sleep duration or sleeplessness (Figure 3 B, Supplementary Table SIII).

MVMR analyses

The results of MVMR analyses are reported in Figure 3 C. In the MVMR analyses, MD, BD, depressed affect, anxious feelings, worry, sleep duration, and sleeplessness were mutually adjusted, which demonstrated a robust causal association between MD and constipation (OR = 2.06; 95% CI: 1.11–3.80; $p = 2.12E-02$). With regard to worry, the direction of association and effect size were similar to those obtained from the univariable MR but were not statistically significant (OR = 1.64; 95% CI: 0.84–3.19; $p = 1.46E-01$). There was no evidence for the causal effects of other traits on constipation.

Sensitivity analyses

The MR-PRESSO test was conducted, which detected and excluded one outlier ($rs\ 599550$) when estimating the effects of depressed affect on constipation, as well as one outlier when estimating the effects of constipation on anxious feelings ($rs\ 7610243$) and worry ($rs\ 114066486$), respectively. Cochran’s Q test indicated the presence of heterogeneity for anxious feelings ($Q_{\text{exposure}} = 77.53, p_{\text{exposure}} = 4.43E-02; Q_{\text{outcome}} = 31.47, p_{\text{outcome}} = 7.59E-03$) and sleep duration ($Q_{\text{exposure}} = 92.36, p_{\text{exposure}} = 9.37E-03$) (Table I). No pleiotropy was detected using the MR-Egger regression intercept analysis and the MR-PRESSO global test (Table I). With regard to sensitivity analysis, the results of the leave-one-out analysis did not show any significant differences from the primary results (Supplementary Figures S1–10).

Discussion

To the best of our knowledge, this is the first MR study to explore the bidirectional causal associations of depression, anxiety, and sleep disorders with constipation. In the present study, we identified the causal effects of MD, BD, depressed affect, and worry on constipation. The MVMR analyses indicated that MD had a robust causal association with constipation, whereas the effects of BD and depressed affect were completely reversed after adjustment. The effect of worry on constipation was similar in direction to the finding of the univariable MR but was no longer statistically significant after adjustment for depression and other potential confounders. The reverse MR analyses found no evidence for the causal associations between constipation and MD, BD, depressed affect, anxious feelings, worry, sleep duration, and sleeplessness.

A large body of evidence has suggested that depression is associated with an increased risk of constipation [53–55]. A recent cross-sectional study indicated that individuals with depression are at a significantly higher risk of constipation [10]. Another recent study involving 31,191 participants from the National Health and Nutrition Examination Survey (NHANES) reported that depressive symptoms are associated with elevated odds of constipation, and those with constipation were more likely to have depression [11]. Similarly, a study that included 73,047 women suggested that the prevalence of depression was higher among women with constipation compared with those without depression [56]. A recent meta-analysis of 39 studies from China, involving 124,079 participants, indicated that depression might lead to a higher prevalence of constipation (OR = 3.16; 95% CI: 1.96–5.11) [57]. However, a cross-sectional study using NHANES data indicated that only mild depression, not moderate and severe depression, was significantly associated with constipation [16], and a meta-analysis also showed that irritable bowel syndrome with constipation was not significantly associated with an increased risk of depression [15]. Despite the relatively large body of observational studies investigating the bidirectional association between depression and constipation, the sample size was still relatively small, and robust evidence of the causal associations is still insufficient. The present study demonstrated that MD was causally associated with an increased risk of constipation, whereas the effects of BD and depressed affect detected in the univariable MR analysis might be attributed to confounders such as MD and worry. This reminds us of the potential confounding factors in the investigation of the effects of BD and depressed effect on constipation. The result that

constipation was not associated with the risk of depression was not consistent with those from prior observational studies, which might be related to reverse causality and residual confounding.

To our knowledge, this is the first study reporting a potential association between worry and constipation. Prior studies have found that worry might be a pathological process underlying mood disorders and anxiety [58, 59]. A cross-sectional study involving 9,264 participants showed that anxiety was associated with an increased risk of constipation (OR = 1.38; 95% CI: 1.15–1.65) [60], and another study suggested that a high level of anxiety was an independent risk factor for constipation [61]. A meta-analysis also demonstrated that the level of anxiety was higher among patients with irritable bowel syndrome and constipation [15]. In the present study, the effect of worry on constipation remained the same in terms of direction but was no longer significant after adjustment for depression, anxiety, and sleep disorders. Furthermore, we found no evidence to support a causal association between anxious feelings and constipation. In the reverse analyses, constipation was not associated with an increased risk of anxious feelings or worry. To further investigate these associations, future studies are warranted.

Few studies have examined the effects of sleep duration and sleeplessness on constipation. A cross-sectional study involving 3,204 participants reported that sleep disorders were associated not only with anxiety and depression but also with a higher prevalence of constipation [62]. Another recent cross-sectional study involving 17,529 shift workers showed that the OR for constipation in individuals with severe sleeplessness was 4.17 times higher than that in individuals without sleeplessness [63]. Our results in univariable analyses indicated that sleep duration was negatively associated with constipation, whereas sleeplessness was positively associated with constipation; although these associations were not statistically significant, they were in line with previous findings. However, in multivariable analyses, the effects of sleep duration and sleeplessness on constipation were attenuated to null, suggesting the possible influence of confounders.

The mechanism underlying the associations between depression and constipation is still largely underexplored. Previous studies suggested that disorders of the brain-gut axis might play an important role [64, 65]. For instance, through the joint work of the hypothalamic-pituitary-adrenal axis, autonomic nervous system, and enteric autonomic nervous system, psychological factors can directly or indirectly mediate gut motor, permeability, luminal secretions, and mucosal immune function [64, 66]. The autonomic responses to visceral stimula-

tions in turn lead to signaling to the brain, thereby affecting the brain area related to emotional regulation [65, 67]. The gut microbiota has also been found to be a key regulator of the connection between depression and constipation [68]. Studies have shown that the gut microbiota is significantly altered in patients with depression [69, 70], and probiotics appear to improve constipation symptoms as well as depressive symptoms [71–73]. In addition, a variety of depression-related factors, such as the use of antidepressants, sedentary behaviors, dietary changes, and sleep disturbances, may further exacerbate constipation [74, 75].

This study has several limitations. First, the phenotype definitions in the UK Biobank are partially based on self-reported data or structured questionnaires, which could introduce misclassification bias. Second, detailed information regarding the severity and duration of depression, anxiety, sleep disorders, and constipation was not available in the summary-level datasets. It would be valuable to explore the impact of symptom severity and duration on this issue. Third, our study could not eliminate the effect of canalization (i.e., dilution of the gene-exposure association); consequently, the estimate may be subject to inflation. Fourth, the existence of certain heterogeneities in SNPs may introduce potential bias, affecting the robustness of the MR results. Finally, since the UK Biobank predominantly includes individuals of European ancestry, the generalizability of our findings to other populations may be limited.

In conclusion, the present study demonstrated that MD may be causally associated with constipation, even after accounting for anxiety, sleep disorders, and other subtypes of depression. Thus, the identification and management of constipation should be highlighted for patients with MD. Worry might also increase the risk of constipation, but this finding needs to be further investigated. We did not find evidence supporting the causal effects of constipation on depression, anxiety, and sleep disorders. Future studies should pay more attention to the possible reverse causality bias and confounding factors.

Availability of data and materials

The GWAS summary data are all available in the IEU OpenGWAS project (<https://gwas.mrcieu.ac.uk/>). All data generated or analyzed during this study are included in this published article and its supplementary information files.

Acknowledgments

We acknowledge all the participants and the Integrative Epidemiology Unit Open Genome-Wide Association Studies (IEU OpenGWAS) project for sharing the data. We also acknowledge the partic-

ipants and investigators of the UK Biobank, PGC, 23andMe, and FinnGen studies.

Funding

This work was supported by the Health Care Commission Youth Research Project of Fujian Province, grant number 2022QNB029.

Ethical approval

Not applicable.

Conflict of interest

The authors declare no conflict of interest.

References

1. Diseases GBD, Injuries C. Global burden of 369 diseases and injuries in 204 countries and territories, 1990–2019: a systematic analysis for the Global Burden of Disease Study 2019. *Lancet* 2020; 396: 1204–22.
2. Organization WH. Depression and other common mental disorders: global health estimates: World Health Organization; 2017.
3. Collaborators C-MD. Global prevalence and burden of depressive and anxiety disorders in 204 countries and territories in 2020 due to the COVID-19 pandemic. *Lancet* 2021; 398: 1700–12.
4. Morin CM, Benca R. Chronic insomnia. *Lancet* 2012; 379: 1129–41.
5. Hertenstein E, Feige B, Gmeiner T, et al. Insomnia as a predictor of mental disorders: a systematic review and meta-analysis. *Sleep Med Rev* 2019; 43: 96–105.
6. Whiteford HA, Ferrari AJ, Degenhardt L, Feigin V, Vos T. The global burden of mental, neurological and substance use disorders: an analysis from the Global Burden of Disease Study 2010. *PLoS One* 2015; 10: e0116820.
7. Hillman DR, Murphy AS, Pezzullo L. The economic cost of sleep disorders. *Sleep* 2006; 29: 299–305.
8. Mugie SM, Benninga MA, Di Lorenzo C. Epidemiology of constipation in children and adults: a systematic review. *Best Pract Res Clin Gastroenterol* 2011; 25: 3–18.
9. Werth BL, Christopher SA. Potential risk factors for constipation in the community. *World J Gastroenterol* 2021; 27: 2795–817.
10. Adibi P, Abdoli M, Daghighzadeh H, et al. Relationship between depression and constipation: results from a large cross-sectional study in adults. *Korean J Gastroenterol* 2022; 80: 77–84.
11. Eustis SJ, McCall MW, Murphy EA, Wirth MD. Association between gastrointestinal symptoms and depression in a representative sample of adults in the United States: findings from National Health and Nutrition Examination Survey (2005–2016). *J Acad Consult Liaison Psychiatry* 2022; 63: 268–79.
12. Yamamoto S, Kawamura Y, Yamamoto K, et al. Internet survey of Japanese patients with chronic constipation: focus on correlations between sleep quality, symptom severity, and quality of life. *J Neurogastroenterol Motil* 2021; 27: 602–11.
13. Kawamura Y, Yamamoto S, Funaki Y, et al. Internet survey on the actual situation of constipation in the Japanese population under 70 years old: focus on functional

- constipation and constipation-predominant irritable bowel syndrome. *J Gastroenterol* 2020; 55: 27-38.
14. Liang J, Zhao Y, Xi Y, et al. Association between depression, anxiety symptoms and gut microbiota in Chinese elderly with functional constipation. *Nutrients* 2022; 14: 5013.
 15. Fond G, Loundou A, Hamdani N, et al. Anxiety and depression comorbidities in irritable bowel syndrome (IBS): a systematic review and meta-analysis. *Eur Arch Psychiatry Clin Neurosci* 2014; 264: 651-60.
 16. Ballou S, Katon J, Singh P, et al. Chronic diarrhea and constipation are more common in depressed individuals. *Clin Gastroenterol Hepatol* 2019; 17: 2696-703.
 17. Wang K, Liu H, Liu J, et al. Factors related to irritable bowel syndrome and differences among subtypes: a cross-sectional study in the UK Biobank. *Front Pharmacol* 2022; 13: 905564.
 18. Xiao-Ling Q, Gang C, Bo L, et al. Depression is associated with constipation in patients with Parkinson's disease. *Front Neurol* 2020; 11: 567574.
 19. Smith GD, Ebrahim S. 'Mendelian randomization': can genetic epidemiology contribute to understanding environmental determinants of disease? *Int J Epidemiol* 2003; 32: 1-22.
 20. Cho Y, Haycock PC, Sanderson E, et al. Exploiting horizontal pleiotropy to search for causal pathways within a Mendelian randomization framework. *Nat Commun* 2020; 11: 1010.
 21. Smith GD, Lawlor DA, Harbord R, Timpson N, Day I, Ebrahim S. Clustered environments and randomized genes: a fundamental distinction between conventional and genetic epidemiology. *PLoS Med* 2007; 4: e352.
 22. Deng Z, Buyang Z, Hou T. Visual impairment and frailty: insight from genetic correlation and Mendelian randomization. *Arch Med Sci* 2025; 21: 2513-21.
 23. Burgess S, Thompson SG. Multivariable Mendelian randomization: the use of pleiotropic genetic variants to estimate causal effects. *Am J Epidemiol* 2015; 181: 251-60.
 24. Sanderson E, Davey Smith G, Windmeijer F, Bowden J. An examination of multivariable Mendelian randomization in the single-sample and two-sample summary data settings. *Int J Epidemiol* 2019; 48: 713-27.
 25. Rosoff DB, Kaminsky ZA, McIntosh AM, Davey Smith G, Lohoff FW. Educational attainment reduces the risk of suicide attempt among individuals with and without psychiatric disorders independent of cognition: a bidirectional and multivariable Mendelian randomization study with more than 815,000 participants. *Transl Psychiatry* 2020; 10: 388.
 26. Davies NM, Holmes MV, Davey Smith G. Reading Mendelian randomisation studies: a guide, glossary, and checklist for clinicians. *BMJ* 2018; 362: k601.
 27. Morneau-Vaillancourt G, Coleman JRI, Purves KL, et al. The genetic and environmental hierarchical structure of anxiety and depression in the UK Biobank. *Depress Anxiety* 2020; 37: 512-20.
 28. Lind MJ, Hawn SE, Sheerin CM, et al. An examination of the etiologic overlap between the genetic and environmental influences on insomnia and common psychopathology. *Depress Anxiety* 2017; 34: 453-62.
 29. Howard DM, Adams MJ, Clarke TK, et al. Genome-wide meta-analysis of depression identifies 102 independent variants and highlights the importance of the prefrontal brain regions. *Nat Neurosci* 2019; 22: 343-52.
 30. Nagel M, Jansen PR, Stringer S, et al. Meta-analysis of genome-wide association studies for neuroticism in 449,484 individuals identifies novel genetic loci and pathways. *Nat Genet* 2018; 50: 920-7.
 31. Howard DM, Adams MJ, Shirali M, et al. Genome-wide association study of depression phenotypes in UK Biobank identifies variants in excitatory synaptic pathways. *Nat Commun* 2018; 9: 1470.
 32. Power RA, Tansey KE, Butterschön HN, et al. Genome-wide association for major depression through age at onset stratification: major depressive disorder working group of the Psychiatric Genomics Consortium. *Biol Psychiatry* 2017; 81: 325-35.
 33. Hyde CL, Nagle MW, Tian C, et al. Identification of 15 genetic loci associated with risk of major depression in individuals of European descent. *Nat Genet* 2016; 48: 1031-6.
 34. Major Depressive Disorder Working Group of the Psychiatric GC, Ripke S, Wray NR, Lewis CM, et al. A mega-analysis of genome-wide association studies for major depressive disorder. *Mol Psychiatry* 2013; 18: 497-511.
 35. Lee LO, Grimm KJ, Spiro A 3rd, Kubzansky LD. Neuroticism, worry, and cardiometabolic risk trajectories: findings from a 40-year study of men. *J Am Heart Assoc* 2022; 11: e022006.
 36. Davis KAS, Coleman JRI, Adams M, et al. Mental health in UK Biobank: development, implementation and results from an online questionnaire completed by 157 366 participants. *BJPsych Open* 2018; 4: 83-90.
 37. Dashti HS, Jones SE, Wood AR, et al. Genome-wide association study identifies genetic loci for self-reported habitual sleep duration supported by accelerometer-derived estimates. *Nat Commun* 2019; 10: 1100.
 38. Holub F, Petri R, Schiel J, et al. Associations between insomnia symptoms and functional connectivity in the UK Biobank cohort (n = 29,423). *J Sleep Res* 2023; 32: e13790.
 39. Kurki MI, Karjalainen J, Palta P, et al. FinnGen provides genetic insights from a well-phenotyped isolated population. *Nature* 2023; 613: 508-18.
 40. Littlejohns TJ, Holliday J, Gibson LM, et al. The UK Biobank imaging enhancement of 100,000 participants: rationale, data collection, management and future directions. *Nat Commun* 2020; 11: 2624.
 41. Pierce BL, Ahsan H, Vanderweele TJ. Power and instrument strength requirements for Mendelian randomization studies using multiple genetic variants. *Int J Epidemiol* 2011; 40: 740-52.
 42. Kamat MA, Blackshaw JA, Young R, et al. PhenoScanner V2: an expanded tool for searching human genotype-phenotype associations. *Bioinformatics* 2019; 35: 4851-3.
 43. Staley JR, Blackshaw J, Kamat MA, et al. PhenoScanner: a database of human genotype-phenotype associations. *Bioinformatics* 2016; 32: 3207-9.
 44. Verbanck M, Chen CY, Neale B, Do R. Detection of widespread horizontal pleiotropy in causal relationships inferred from Mendelian randomization between complex traits and diseases. *Nat Genet* 2018; 50: 693-8.
 45. Ding L, Chen Q, Liang H, Shen M, Zheng M, Li Z. Physical activities and breast cancer: a Mendelian randomization study. *Arch Med Sci* 2024; 20: 1957-67.
 46. Burgess S, Butterworth A, Thompson SG. Mendelian randomization analysis with multiple genetic variants using summarized data. *Genet Epidemiol* 2013; 37: 658-65.
 47. Zhao Q, Chen Y, Wang J, Small DS. Powerful three-sample genome-wide design and robust statistical inference

- in summary-data Mendelian randomization. *Int J Epidemiol* 2019; 48: 1478-92.
48. Meier SM, Trontti K, Purves KL, et al. Genetic variants associated with anxiety and stress-related disorders: a genome-wide association study and mouse-model study. *JAMA Psychiatry* 2019; 76: 924-32.
 49. Purves KL, Coleman JRI, Meier SM, et al. A major role for common genetic variation in anxiety disorders. *Mol Psychiatry* 2020; 25: 3292-303.
 50. Yu K, Dai X, Bu F, et al. Sleep disorders and renal failure: exploring the role of creatinine and sleep apnea syndrome through cross-sectional studies and Mendelian randomization analysis. *Arch Med Sci* 2025; DOI: <https://doi.org/10.5114/aoms/199512>.
 51. Hemani G, Zheng J, Elsworth B, et al. The MR-Base platform supports systematic causal inference across the human phenome. *Elife* 2018; 7: e34408.
 52. Zhao Q, Wang J, Hemani G, Bowden J, Small DS. Statistical inference in two-sample summary-data Mendelian randomization using robust adjusted profile score. *Ann Statist* 2020; 48: 1742-69.
 53. Werth BL, Fisher MJ, Williams KA, Pont LG. Chronic constipation in the community: a national survey of Australian adults. *J Wound Ostomy Continence Nurs* 2020; 47: 259-64.
 54. Chen HD, Bair MJ, Chang WC, et al. Similarities and differences between IBS-C and FC with regards to symptomatology, sleep quality and psychological attributes. *J Formos Med Assoc* 2020; 119: 75-80.
 55. Dore MP, Pes GM, Bibbo S, Tedde P, Bassotti G. Constipation in the elderly from Northern Sardinia is positively associated with depression, malnutrition and female gender. *Scand J Gastroenterol* 2018; 53: 797-802.
 56. Salmoirago-Blotcher E, Crawford S, Jackson E, Ockene J, Ockene I. Constipation and risk of cardiovascular disease among postmenopausal women. *Am J Med* 2011; 124: 714-23.
 57. Chen Z, Peng Y, Shi Q, et al. Prevalence and risk factors of functional constipation according to the Rome Criteria in China: a systematic review and meta-analysis. *Front Med (Lausanne)* 2022; 9: 815156.
 58. McEvoy PM, Watson H, Watkins ER, Nathan P. The relationship between worry, rumination, and comorbidity: evidence for repetitive negative thinking as a transdiagnostic construct. *J Affect Disord* 2013; 151: 313-20.
 59. Barlow DH, Sauer-Zavala S, Carl JR, Bullis JR, Ellard KK. The nature, diagnosis, and treatment of neuroticism: back to the future. *Clin Psychol Sci* 2014; 2: 344-65.
 60. Moezi P, Salehi A, Molavi H, et al. Prevalence of chronic constipation and its associated factors in pars cohort study: a study of 9000 adults in Southern Iran. *Middle East J Dig Dis* 2018; 10: 75-83.
 61. Cheng C, Chan AO, Hui WM, Lam SK. Coping strategies, illness perception, anxiety and depression of patients with idiopathic constipation: a population-based study. *Aliment Pharmacol Ther* 2003; 18: 319-26.
 62. Nordin G, Sundqvist R, Nordin S, Gruber M. Somatic symptoms in sleep disturbance. *Psychol Health Med* 2023; 28: 884-94.
 63. Yun BY, Sim J, Yoon JH, Kim SK. Association between insomnia and constipation: a multicenter three-year cross-sectional study using shift workers' health check-up data. *Saf Health Work* 2022; 13: 240-7.
 64. Mayer EA, Savidge T, Shulman RJ. Brain-gut microbiome interactions and functional bowel disorders. *Gastroenterology* 2014; 146: 1500-12.
 65. Carabotti M, Scirocco A, Maselli MA, Severi C. The gut-brain axis: interactions between enteric microbiota, central and enteric nervous systems. *Ann Gastroenterol* 2015; 28: 203-9.
 66. Liu X, Liu H, Wei F, et al. Fecal metabolomics and network pharmacology reveal the correlations between constipation and depression. *J Proteome Res* 2021; 20: 4771-86.
 67. Li G, Zhang W, Hu Y, et al. Distinct basal brain functional activity and connectivity in the emotional-arousal network and thalamus in patients with functional constipation associated with anxiety and/or depressive disorders. *Psychosom Med* 2021; 83: 707-14.
 68. Barandouzi ZA, Starkweather AR, Henderson WA, Gyamfi A, Cong XS. Altered composition of gut microbiota in depression: a systematic review. *Front Psychiatry* 2020; 11: 541.
 69. Simpson CA, Diaz-Arteche C, Eliby D, Schwartz OS, Simmons JG, Cowan CSM. The gut microbiota in anxiety and depression - a systematic review. *Clin Psychol Rev* 2021; 83: 101943.
 70. Liu X, Zhao Z, Fan Y, et al. Microbiome and metabolome reveal the metabolic and microbial variations induced by depression and constipation. *Psychogeriatrics* 2023; 23: 319-36.
 71. Zhang X, Chen S, Zhang M, et al. Effects of fermented milk containing *Lactobacillus paracasei* strain shirota on constipation in patients with depression: a randomized, double-blind, placebo-controlled trial. *Nutrients* 2021; 13: 2238.
 72. Wallace CLK, Milev R. The effects of probiotics on depressive symptoms in humans: a systematic review. *Ann Gen Psychiatry* 2017; 16: 14.
 73. Chen S, Ou Y, Zhao L, et al. Differential effects of *Lactobacillus casei* strain shirota on patients with constipation regarding stool consistency in China. *J Neurogastroenterol Motil* 2019; 25: 148-58.
 74. Amdanee N, Shao M, Hu X, et al. Serum metabolic profile in schizophrenia patients with antipsychotic-induced constipation and its relationship with gut microbiome. *Schizophr Bull* 2023; 49: 646-58.
 75. Camilleri M, Ford AC, Mawe GM, et al. Chronic constipation. *Nat Rev Dis Primers* 2017; 3: 17095.