

Putative consequences of exposure to *Helicobacter pylori* infection in patients with coronary heart disease in terms of humoral immune response and inflammation

Agnieszka Matusiak¹, Maciej Chałubiński², Marlena Broncel², Tomasz Rechciński³, Karolina Rudnicka¹, Eliza Mischczyk¹, Maria Walencka¹, Dominik Strapagiel⁴, Adrian Gajewski¹, Magdalena Chmiela¹

¹Laboratory of Gastroimmunology, Department of Immunology and Infectious Biology, Faculty of Biology and Environmental Protection, University of Lodz, Lodz, Poland

²Department of Internal Diseases and Clinical Pharmacology, Biegański Regional Specialty Hospital, Medical University of Lodz, Lodz, Poland

³II Cardiology Clinic, Bieganski Regional Specialty Hospital, Medical University of Lodz, Lodz, Poland

⁴Biobank Lab, Department of Molecular Biophysics, Institute of Biophysics, Faculty of Biology and Environmental Protection, University of Lodz, Lodz, Poland

Submitted: 27 February 2014

Accepted: 3 June 2014

Arch Med Sci 2016; 12, 1: 45–54

DOI: 10.5114/aoms.2015.50772

Copyright © 2016 Termedia & Banach

Corresponding author:

Karolina Rudnicka
Laboratory
of Gastroimmunology
and Infectious Biology
Department of Immunology
and Infectious Biology
Faculty of Biology
and Environmental Protection
University of Lodz
12/16 Banacha St
90-237 Lodz, Poland
Phone: +48 42 635 45 25
E-mail:
rudnicka@biol.uni.lodz.pl

Abstract

Introduction: Pathogens, including *Helicobacter pylori* (Hp), have been suggested to contribute to the development of coronary heart disease (CHD), although the evidence still remains insufficient. The study was focused on the exposure of CHD patients to Hp and resulting anti-Hp heat shock protein B HspB antibody production in relation to the level of serum lipopolysaccharide binding protein (LBP) as a marker of inflammation.

Material and methods: One hundred seventy CHD patients and 58 non-CHD individuals participated in this study. Coronary angiography confirmed the atheromatic background of CHD. The panel of classical risk factors included: arterial hypertension, diabetes, total cholesterol, low-density lipoprotein (LDL)/high-density lipoprotein (HDL) cholesterol, triglycerides, obesity and nicotine use. The Hp status was estimated by ¹³C urea breath test and serology. Immunoblot and ELISA were used for screening the sera samples for anti-Hp HspB immunoglobulins (Igs) and LBP.

Results: Coronary heart disease patients were exposed to Hp more frequently than non-CHD individuals. This was associated with increased levels of specific anti-Hp IgG2 and IgA as well as total IgA. Hp infected CHD and non-CHD donors produced anti-Hp HspB IgG cross-reacting with human Hsp 60. In CHD patients the LBP level was significantly higher in comparison to non-CHD donors. This was related to the severity of the disease. Type I Hp strains stimulated higher LBP levels than less pathogenic type II isolates.

Conclusions: Lipopolysaccharide binding protein secreted in excess together with anti-Hp HspB, cross-reacting with human Hsp60, may increase the risk of vascular pathologies in Hp-exposed CHD patients.

Key words: atherosclerosis, *Helicobacter pylori*, autoantibodies, heat shock protein, lipopolysaccharide binding protein.

Introduction

Gastric ulcer disease and coronary heart disease (CHD) are chronic disorders posing a serious health threat in humans. Their common feature is a local inflammatory response within the gastric epithelium [1] or in vascular endothelium, respectively [2–6]. Conventional risk factors account only for part of the CHD incidence. The prevalence of atherosclerosis in CHD patients seems to be increased by a number of infections to which an individual has been exposed [7]. Pathogens may directly affect the vessel wall by inducing the formation of macrophage-derived foam cells or indirectly by initiation of the inflammatory and auto-immune processes or due to the modification of classic CHD risk factors. The role of inflammation in the pathogenesis of CHD is supported by the finding that levels of proinflammatory cytokines, including tumor necrosis factor (TNF)- α , interleukin (IL)-6 and IL-1 β , increase during heart failure. Elevated levels of such cytokines have been considered as independent predictors of cardiovascular events [8].

The results of pioneer [9] and recent studies [10, 11] showed the elevation of anti-*Helicobacter pylori* (Hp) Igs from 40% to 90% in CHD patients. Especially type I Hp strains, producing cytotoxin associated gene A antigen (CagA) and vacuolating cytotoxin (VacA), so-called CagA⁺VacA⁺ Hp strains, are considered to be involved in CHD. The process underlying this association is probably the low-grade persistent inflammation stimulated by Hp strains with this phenotype [12]. This linkage was also supported by the identification of Hp genomic material within the coronary arteries [13], upregulation of biochemical inflammatory parameters and coronary lumen reduction [14]. A significant association of Hp infection with elevated levels of low-density lipoprotein (LDL), C-reactive protein (CRP), homocysteine, fibrinogen, plasminogen as well as inflammatory cytokines and a higher incidence of diabetes have been shown [15–18]. However, the evidence still remains unsatisfactory [19]. In several studies, no association between Hp seropositivity and CHD incidence was found. Thus there was no consensus on the role of Hp infections in either causation or progression of CHD [20–22]. The main controversy concerned the magnitude of study groups and various systems of data analysis. However, recently it was found that in Central Africans seropositive for Hp, very high levels of anti-Hp IgG were significantly associated with CHD. After adjustment for classic risk factors of CHD, Hp infection was found to be an independent predictor of carotid plaque and stroke prevalence [10]. Exposure to Hp has been found to be a risk factor of stroke in Mexican Americans, and given the increased exposure to Hp in this popu-

lation, it may contribute to ethnic susceptibility to stroke [11]. In the light of recent findings it can be suggested that Hp seropositivity may be a predictor in patients with long-term but not early unstable angina [23]. However, the results of Schöttker *et al.* [24] do not support the hypothesis that Hp infection and exposure to CagA are risk factors for cardiovascular diseases or mortality and suggest an inverse relationship between infection with Hp CagA⁺ and fatal cardiovascular events.

In this study we asked whether CHD patients chronically exposed to Hp-respond with specific anti-Hp Igs production. Attention was focused on the production of antibodies to Hp heat shock protein B (Hp HspB) and their ability to cross-react with human recombinant Hsp60 (hr Hsp60) and the reference *Mycobacterium bovis* Hsp65 (Mb Hsp65). The relation between exposure to Hp and levels of lipopolysaccharide binding protein (LBP) was considered as a marker of ongoing inflammation caused by tissue damage or bacterial infections. Recently it has been shown that the acute phase proteins can play a role of endogenous ligands for pattern recognition receptors (PRR) potentially involved in the pathogenesis of cardiovascular diseases [25]. We asked whether LBP levels might be influenced by type I Hp strains, which induce a stronger inflammatory response than CagA negative isolates.

Material and methods

Subjects

Subjects for the study were recruited from patients who were under the care of the 2nd Cardiology Clinic of Bieganski Regional Specialty Hospital (Medical University of Lodz, Poland) and the Department of Internal Diseases and Clinical Pharmacology (Medical University in Lodz, Poland).

The CHD study group consisted of 170 patients (mean age: 59.7 \pm 7.4, males comprised 65.3%), 106 with unstable angina pectoris (UAP) and 64 after myocardial infarction (MI). The inclusion criteria for the CHD group constituted classic CHD risk factors and were as follows: arterial hypertension (intake of antihypertensive drugs prior to enrolment, systolic blood pressure > 140 or diastolic blood pressure > 90 mm Hg), diabetes (glucose-reducing agents or insulin intake prior to enrolment), fasting glucose level (> 126 mg/dl (7 mmol/l) double checked), glycosylated hemoglobin (Hb) level (> 7% or positive oral glucose tolerance test with 75 g glucose), dyslipidemia (hypolipidemic agents intake prior to enrolment), hyperlipidemia: total cholesterol level (> 190 mg/dl (5.0 mmol/l), LDL cholesterol level (> 115 mg/dl (3.0 mmol/l)), high-density lipoprotein (HDL) cholesterol (< 40 mg/dl (1.0 mmol/dl)), or triglycerides

(> 150 mg/dl (1.2 mmol/l)), obesity measured by body mass index (BMI) (> 32), nicotineism.

All CHD patients were examined by standardized coronary artery angiography. Angiographic results of CHD cases were further analyzed to calculate the Gensini score [26], and the reports were routinely used in both clinics. Multiple scoring systems are available for various angiographic coronary artery abnormalities. Neeland *et al.* compared several coronary angiographic scoring systems and concluded that although all of these scores correlated with each other, the Gensini was one of the most accurate [27]. The Gensini score provides valuable prognostic information on cardiovascular risk factors. This most widely used system takes into account: geometrically increasing severity of lesions: 25%, 50%, 75%, 90%, 99% and 100% diameter reduction, cumulative effect of multiple lesions, location of lesions, influence of collaterals, and vessel graftability [27]. The index was calculated as a sum of multipliers dependent on the degree of lumen narrowing and localization of atherosclerotic plaque.

The control, non-CHD group consisted of 66 healthy individuals (mean age 56.5 ± 5.2, males comprised 63.6%), with a negative history of cardiovascular diseases. The control group was selected on the basis of the exclusion of classic CHD risk factors: arterial hypertension, hyperlipidemia, diabetes, smoking or obesity. Eight individuals were excluded from the control group and further study, due to positive criteria for CHD.

All participants involved in the study were adults of European origin. All patients signed an informed consent form, and the study was approved by the Local Ethics Committee.

The blood samples were collected from the patients (CHD) and the controls (non-CHD) in a fasting state, on admission, before the medical and pharmacological intervention. The routine laboratory tests listed in the inclusion criteria (total cholesterol, lipoprotein fractions (LDL, HDL), triglyceride as well as glucose and glycosylated Hb levels) were evaluated in fresh blood samples using an automatic analyzer (Cobas 6000, Roche Diagnostics, Germany) in the Diagnostic Laboratory of Bieganski Regional Specialty Hospital in Lodz. Serum from the same blood sample was obtained within 1 h, by 30 min incubation at room temperature and subsequent 30 min incubation at 4°C followed by centrifugation (2000 x g, 10 min, 4°C). The sera were aliquoted and stored at -80°C for further analysis. Samples were thawed directly before research measurements.

The Hp status was estimated by the ¹³C urea breath test (¹³C UBT), and by enzyme linked immunosorbent assay (ELISA) for anti-Hp IgG₂ and IgA as well as by immunoblot for anti-Hp IgG, as previously described [28, 29], with anti-Hp IgG₂ as

IgA subclasses being indicators of chronic Hp infection. Coincidence between the results obtained from ELISA and ¹³C UBT, as well as between ELISA and immunoblot, was 98% [30].

Detection of anti-Hp IgG and IgG₂/IgA by ELISA

The ELISA assay was performed using 170 serum samples of CHD patients and 58 non-CHD individuals with a glycine acid extract (GE) from the reference Hp strain CCUG 17874 (Culture Collection, University of Gothenburg, Sweden) and rabbit anti-human IgG and IgA antibodies, or mouse monoclonal antibodies to a human IgG₂ subclass conjugated with horseradish peroxidase (HRP) (Dako, Glostrup, Denmark) [29]. The cut-off OD₄₅₀ value for anti-Hp IgG and IgG₂ was 0.30 and 0.2, respectively, and 0.34 for anti-Hp IgA. These markers of nonspecific ELISA reactions were derived from medium OD₄₅₀ values supplemented with double SD for the wells coated with the GE and incubated with the HRP conjugated antibody, and chromogen-substrate solution. An immunoturbidimetric assay with anti-IgG or anti-IgA antiserum was used for estimation of the total concentrations of IgG or IgA in the serum samples (Sentinel Diagnostic, Milan, Italy). The reference values were in the range of 700–1600 mg/dl and 70–400 mg/dl for IgG and IgA, respectively.

Specificity of IgG response to Hp antigens including HspB visualized by Western blot

IgG against the Hp antigens CagA (120 kDa), VacA (87 kDa), UreB (66 kDa), HspB (60 kDa), Fla (54, 57 kDa), Ure A (29 kDa) and proteins of 20, 26, 35 kDa were detected by immunoblot using 170 serum samples of CHD patients and 58 non-CHD donors (Milenia ID Blot *H. pylori* IgG kit, DPC Biermann GmbH, Bad Nauheim, Germany or Viro-Blot anti-*H. pylori* IgG, Viro-Immun Labor-Diagnostika GmbH, Oberursel, Germany). The Hp infection was evaluated on the basis of the reactivity of serum samples with selected antigens, as recommended by the manufacturer. The summarized Western blot data (Milenia ID Blot) of selected serum samples from *H. pylori* infected and uninfected donors are shown in Figure 1. Infection with the CagA⁺ VacA⁺ Hp strain was confirmed by the detection of anti-CagA and anti-VacA antibodies reacting in Western blot with the proteins of 120 kDa and 87 kDa, respectively. The semiquantitative analysis of anti-Hp HspB antibodies reacting in Western blot with the protein of 60 kDa was performed using image processing and analysis in Java software ImageJ (<http://rsb.info.nih.gov>, National Institute of Health, Bethesda, Maryland, USA) with color intensity units (CIU) for the analysis.

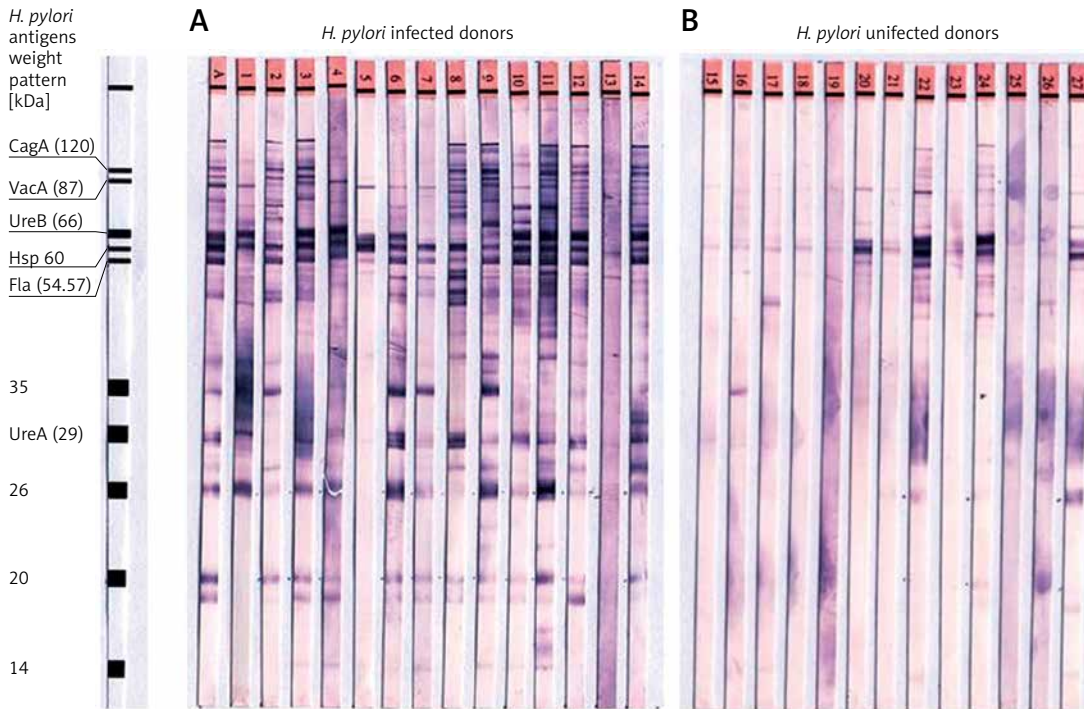


Figure 1. Summarized Western blot data of selected serum samples from *H. pylori* infected (A) and uninfected (B) individuals

Cytotoxin associated gene A antigen (CagA), vacuolating cytotoxin (VacA), urease (Ure), heat shock protein (Hsp), flagellin (Fla).

Detection of anti-Mt Hsp65 IgG by ELISA

The in-house ELISA assay was evaluated experimentally and performed using serum samples of 170 CHD and 58 non-CHD donors. Recombinant *M. bovis* BCG Hsp65 (StressMarq, Victoria, Canada), in a final concentration of 1 ng/ml (evaluated experimentally) in a 0.05 M carbonate buffer, pH 9.6, was used for coating the wells (18 h, 4°C). Phosphate buffered saline (PBS) with 1% bovine serum albumin (BSA) and 0.05% Tween 80 (PBS/BSA/Tween) was used for blocking, dilutions of serum samples (1 : 100) and HRP-conjugated rabbit antibodies to human IgG (Dako, Glostrup, Denmark) preparation. For the color reaction, chromogen *o*-phenylenediamine dihydrochloride (Sigma, St. Louis, MO, USA) was used in the 0.1 M citric phosphate buffer, pH 5.0 with 0.005 ml of 30% H₂O₂ per ml. The cut-off OD₄₅₀ value (0.25) was the average absorbance supplemented with double SD for the wells coated with the antigen and containing HRP-conjugated secondary antibodies as well as chromogen-substrate solution. The results were evaluated quantitatively and expressed as OD₄₅₀ absorbance readings above the cut-off value.

Screening of serum samples for anti-rh Hsp60 IgG by ELISA

The prevalence and concentrations of serum IgG specific for human Hsp60 were evaluated

in 39 of CHD and 41 non-CHD sera samples by commercial ELISA assay as recommended by the manufacturer (Stressgen, Ann Arbor, USA). The detection limit of the assay was 2.88 ng/ml.

Cross-reactivity of anti-Hp HspB with human Hsp60 and *M. bovis* Hsp65

To evaluate whether anti-Hp HspB IgG present in the serum samples from Hp-exposed CHD patients (three serum samples) and non-CHD individuals (one serum sample) cross-reacted with human Hsp60 and with *M. bovis* Hsp65, all selected serum samples were absorbed: 1 h at 21°C, 1 h at 37°C and 18 h at 4°C with a heat inactivated (1 h, 80°C) Hp reference strain, CCUG 17874. Non-absorbed and absorbed serum samples were used in the ELISA assays for the detection of IgG interacting with human Hsp60 and *M. bovis* Hsp65. The ELISA OD₄₅₀ values for non-absorbed sera were considered as 100% reaction intensity in the assay, and were compared with the OD₄₅₀ values obtained for the serum samples absorbed with Hp. The final results were expressed as a percentage of ELISA assay inhibition.

Quantitative determination of LBP

The concentration of serum LBP was measured in all CHD, non-CHD samples and selected MI (34), UAP (93) samples by the ELISA (Human LBP ELISA Test Kit, HyCult Biotechnology, Uden, Netherlands)

as recommended by the manufacturer. The sensitivity of the assay was 0.8 ng/ml.

Statistical analysis

The Statistica 5.5 PL software (StatSoft, Poland) with non-parametric tests was used. To verify the potential differences between two statistically different populations, the Mann-Whitney *U* test (for unpaired data) was used and frequency of analyzed parameters was analyzed by the chi-square (χ^2) test. Results were considered statistically significant when $p < 0.05$.

Results

Baseline characteristics of the study group

Demographic data, prevalence of typical risk factors of atherosclerosis development, concomitant disorders and selected treatment of CHD patients are outlined in Table I.

Anti-Hp IgG₂ and IgA seroprevalence as markers of long-term exposure to Hp in CHD and non-CHD subjects

The CHD patients were chronically exposed to Hp with higher frequency than non-CHD individ-

uals, which was shown by independent detection of anti-Hp IgG₂ (89% vs. 69%, $p = 0.0004$) and anti-Hp IgA (65% vs. 18%, $p = 0.0001$) or simultaneous detection of anti-Hp IgG₂ and IgA isotypes (55% vs. 27%, $p = 0.01$). Higher frequency of Hp exposure in the CHD group was accompanied by significantly elevated anti-Hp IgG₂ (OD₄₅₀ 0.586 ± 0.461 vs. 0.367 ± 0.346, $p = 0.0006$) and IgA (OD₄₅₀ 0.820 ± 0.532 vs. 0.529 ± 0.180, $p = 0.0220$). Moreover, in the CHD group an elevated level of total IgA was detected more frequently (26% vs. 6%, $p = 0.001$) as compared to the non-CHD individuals. There was no difference between the CHD and non-CHD group in the total IgG levels.

Levels of LBP in response to atherosclerosis and Hp exposure

The LBP concentrations in the sera of CHD patients were significantly higher than in non-CHD individuals and were related to the severity of CHD disease: unstable angina pectoris and myocardial infarction (Figure 2 A). In CHD patients the increased LBP production cannot be directly attributed to exposure to type I Hp strains (Figure 2 B). However, such an effect was observed in non-CHD donors, where sera exposed to CagA⁺VacA⁺ but not

Table I. Baseline demographics and clinical characteristics of patients with coronary heart disease (CHD) and non-CHD donors

Characteristic	CHD (n = 170)	Non-CHD (n = 58)	Statistical significance (p-value)
Questionnaire:			
Age [years]	59.7 ± 7.4	56.5 ± 5.2	Matched
Females [%]	111 (65.3%)	42 (63.6%)	Matched
Coronary heart disease [%]:			
Myocardial infarction	38.3	0	< 0.05
Angina pectoris	61.7	0	
Classic CHD risk factors/co-morbidities [%]:			
Arterial hypertension	79.4	12.1	< 0.05
Obesity (BMI > 32 kg/m ²)	10.0	3.0	
Smoking	35.8	9.0	
Hyperlipidemia	65.2	12.1	
Diabetes	25.3	3.0	
Inflammatory markers [%]:			
CRP (> 6 mg/ml)	34.1	0	< 0.05
Medication/surgery intervention [%]:			
Bypass grafting	29.4	0	< 0.05
High blood pressure medicines	79.4	12.1	
Other specific medicines	100.0	0	
Antidiabetics	25.3	3.0	
Aspirin	100.0	10.0	

BMI – body mass index, CHD – coronary heart disease, CRP – C-reactive protein.

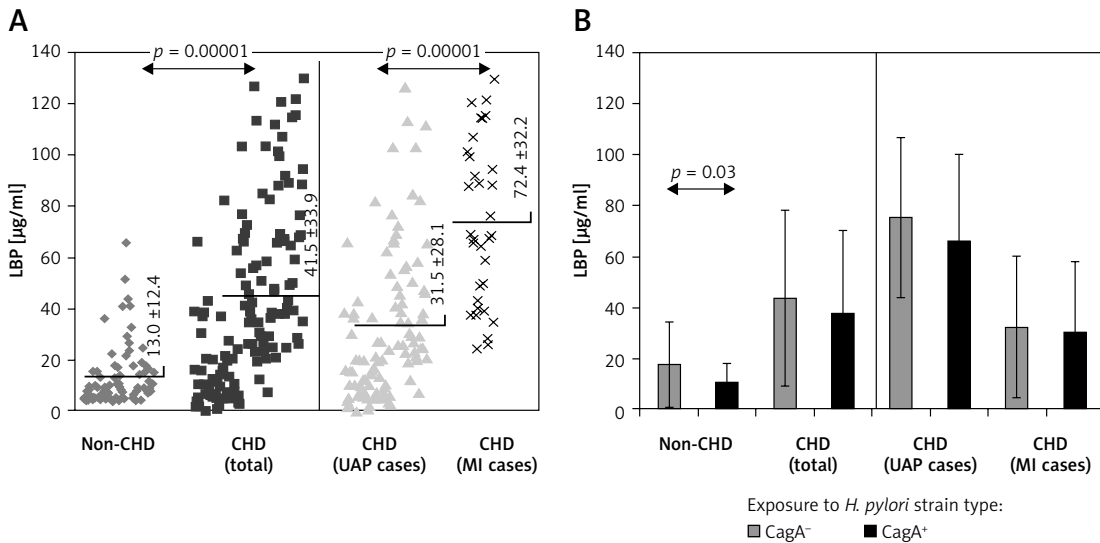


Figure 2. Concentrations of lipopolysaccharide binding protein (LBP) in the sera samples of the coronary heart disease (CHD) group in total, in CHD patients with unstable angina pectoris (UAP) and myocardial infarction (MI), as well as healthy non-CHD donors (A), infected with CagA⁺VacA⁺ or CagA⁻VacA⁻ *H. pylori* strains (B)

CagA⁻VacA⁻ Hp strains contained higher concentrations of LBP ($p = 0.03$) (Figure 2 B).

Distribution of IgG directed to human (rh Hsp60) and bacterial (Hp HspB, Mb Hsp65) Hsp proteins in CHD and non-CHD individuals

All sera samples from cases (CHD) and controls (non-CHD) contained detectable levels of anti-hr Hsp60 IgG. However, the concentration of these antibodies in the CHD group was significantly higher as compared to healthy donors ($p = 0.0006$) (Figure 3 A). The anti-Mb Hsp65 IgG was detected in the majority of CHD sera (89%), whereas only 65% of individuals of the non-CHD group produced IgG with such specificity ($p = 0.0001$). Also, the levels of anti-Mb Hsp65 IgG were significantly higher in CHD than non-CHD donors

($p = 0.00002$) (Figure 3 B). IgG anti-Hp HspB was detected by Western blot more frequently in the CHD cases (86%) than in healthy controls (68%) ($p = 0.003$). However, semiquantitative evaluation of the antibody production on the basis of color intensity units failed to show differences between the two studied groups. In order to evaluate whether anti-Hp HspB antibodies present in the sera of Hp-positive CHD and non-CHD individuals cross-react with hr Hsp60 and with Mb Hsp65, four serum samples positive for anti-Hp HspB in Western blot (one from a Hp-positive non-CHD donor and three from Hp-positive CHD patients) were absorbed with heat-inactivated Hp bacteria as described in the Material and Methods section. As shown in Figure 4, the absorption of sera with Hp bacteria diminished the intensity of IgG reactivity with Mb Hsp65 and with hr Hsp60 to approximately 43% and 31%, respectively.

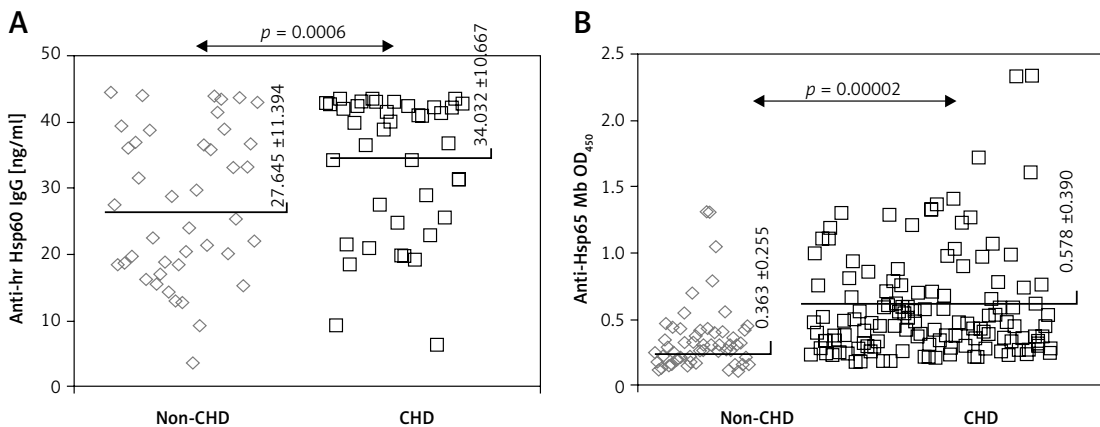


Figure 3. Distribution of IgG against human recombinant heat shock protein of 60 kDa (hr Hsp60 – A) and *M. bovis* Hsp65 (Mb Hsp65 – B) in patients with coronary heart disease (CHD) and healthy non-CHD individuals, expressed as ng/ml or optical density (OD) units, respectively

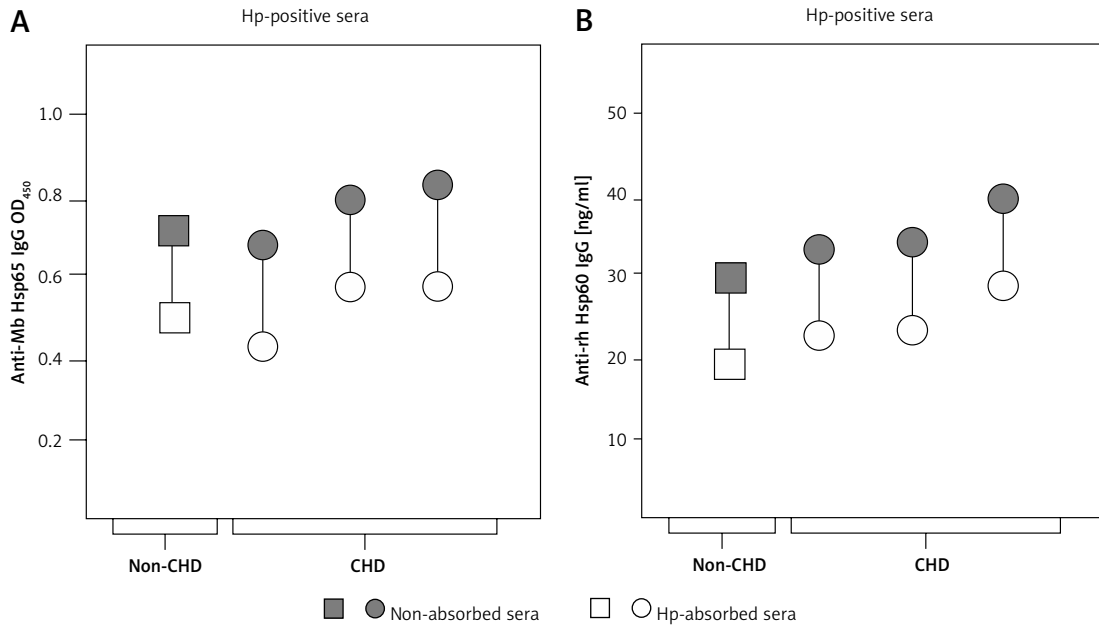


Figure 4. Reactivity of *H. pylori* (Hp)-positive sera from coronary heart disease (CHD) and non-CHD individuals, investigated in the ELISA assays with heat shock proteins (Hsp): *M. bovis* Hsp65 and human recombinant Hsp60 (rh Hsp60), expressed as optical density (OD) or ng/ml, respectively. Serum samples nonabsorbed (full figures) and absorbed (empty figures) with heat-inactivated Hp were used

Discussion

Since Hp induces a chronic inflammatory response, such infections could amplify the atherosclerosis-related pathologies. This indirect acceleration may involve inflammatory mediators induced by infection as well as specific antibodies with cross-reacting potency. The study supports the idea that chronic exposure to Hp in CHD patients may result in the increase of serum LBP and the production of antibodies against Hp HspB, cross-reacting with human Hsp60, both of which may facilitate the inflammation in the vascular endothelium. The pathological role of LBP may depend on the phenotype of vascular endothelium, which exhibits proinflammatory features such as increased PRR expression. The involvement of anti-Hsp60 Igs in CHD-related processes can be explained by the antigenic mimicry and complement dependent cell damage, possibly induced by such antibodies. The main limitation of most studies on the relationship of Hp infections and CHD is the lack of data on the duration of such infections. In this study the majority of CHD patients were chronically exposed to Hp, since their serum samples contained both anti-Hp IgG₂ and IgA occurring in chronic infections, as a result of immunoglobulin class switching. Previously, we reported the lack or very rare production of anti-Hp IgA in Hp infected children, and increasing occurrence of such antibodies in Hp-infected adolescents or adults, suggesting that specific anti-Hp IgA appears later during infection [31]. In

the present study we found that the CHD group was characterized by higher levels of both anti-Hp IgG₂ and IgA. In research of others, IgG₂ against Hp antigens was found to be dominating during chronic Hp infections, whereas the IgG₃ subclass was typical for the acute stage [30]. The development of a humoral response in both classes of immunoglobulins may reflect the nature of antigens. Domination of IgG₂ could be a consequence of the immune response to polysaccharide antigens, including lipopolysaccharide (LPS). The binding of LPS to toll-like receptors (TLR) on phagocytes and B lymphocytes results in the secretion of TNF- α which activates dendritic cells and thereby enhances the activation of CD4⁺ T cells, which promote the production of IgG₂ [32]. The overproduction of TNF- α is a characteristic feature of various cardiovascular disorders including CHD [5, 6]. It was postulated that antibodies induced by Hp LPS may potentiate CHD-related pathologies due to the recognition of common bacterial and host Lewis^{XY} determinants [33]. Intense production of anti-Hp IgA in CHD patients might be a result of the prolonged exposure to Hp protein antigens, such as Hsp, which can be effectively presented to immunocompetent cells of the mucosal immune system [32].

In the CHD group, elevated levels of total IgA but not IgG were detected more frequently than in the non-CHD donors. IgG levels can be affected by protein loss, infections and the use of drugs. In CHD individuals, enhanced diffusion and accumulation of IgG immune complexes (ICs) into the

arterial walls was previously observed [34]. The negative modulation of the IgG humoral response by periodontitis-inducing microbes such as *Actinomyces actinomycetemcomitans* in CHD patients cannot be excluded [35]. An increased concentration of IgA in CHD patients could have also been a result of chronic exposure of the host immune cells to various antigens of *Moraxella*, *Bordetella*, *Propionibacterium*, *Campylobacter*, *Chlamydia*, *Salmonella*, *Borrelia*, *Legionella*, *Haemophilus* and *Pseudomonas* species [36]. Another reason for the elevated levels of serum IgA in Hp-positive CHD patients could be the domination of IgA monomers due to the down-regulation of the J chain synthesis induced by Hp during infection [37]. IgA could be involved in the development of post-infection autoimmune processes, which are supposed to be involved in the development of atherosclerosis [38].

Vascular endothelium may be dysregulated due to the overexpression of inflammatory markers induced by infection [39] or endogenous compounds [2–6]. The list of inflammatory markers which correlate with atherosclerosis includes various cytokines and chemokines, for instance TNF- α , IL-6 [8], monocyte chemoattractant protein (MCP-1), fibrinogen, CRP, adhesion molecules such as selectins and vascular cell adhesion molecule-1 (VCAM-1), as well as myeloperoxidase and metalloproteinase involved in lipid peroxidation and accelerated consumption of nitric oxide (NO) [40–42]. Attention was also paid to the role of the cellular signaling pathways involving CD14, TLR and LBP [43, 44], with the latter being considered as a protein triggering pathological symptoms during CHD [45].

In this study the levels of LBP were found to be significantly higher in the CHD than in the non-CHD group. Type I Hp strains, inducing a strong inflammatory response [45], were able to trigger LBP overproduction. This was visualized by higher levels of LBP in the non-CHD donors exposed to type I Hp strains. The effectiveness of type I Hp strains to stimulate LBP production in the CHD patients was probably masked due to the overproduction of this acute phase protein in response to atherosclerosis-caused pathology. In the previous study [33] it was shown that in CHD Hp negative individuals the level of LBP was significantly higher than in Hp negative healthy controls, which suggests that the atherogenic processes influence the level of LBP.

Similarly, CRP concentrations in plasma of CHD patients increase in response to infections or tissue damage, which may be a consequence of cardiovascular disorders [42]. In CHD patients high levels of LBP may be involved in the binding and transportation of oxLDL and/or

bacterial LPS, which may lead to the deposition of these compounds on endothelial cells, thus accelerating inflammatory processes that promote CHD-related pathologies [37, 46]. It was shown that TLR4 may function intracellularly in human coronary artery endothelial cells and via LBP and sCD14 proteins mediates LPS responses [47]. A limitation of these studies is that they do not allow combining the results of routine CRP and experimental LBP measurements with inflammatory markers in gastric epithelium, which may induce systemic effects [42]. However, experimental works on mice models showed that chronic Hp infection induces the upregulation of VCAM-1 expression and thrombosis parameters and downregulation of NO synthesis, which supports a possible role of these microorganisms in atherogenesis [48, 49].

Immunological cross-reactivity was considered as a possible mechanism of CHD-related pathologies [50]. In this study the increased prevalence of anti-Hp HspB Ig was related to the high frequency of Hp exposure in CHD patients. The concentration of anti-Hp HspB Ig in Hp-positive sera was reduced by its absorption; with inactivated Hp bacteria. The absorption assay showed the cross-reactive nature of Hp-induced anti-Hp HspB antibodies. *In vivo* anti-HspB IgG may interact with human Hsp60, overexpressed in the vascular endothelium of CHD individuals, and trigger complement-dependent disorders. Some pathological effects could be induced in CHD patients by ICs containing Hp LPS and anti-Hp LPS IgG [25, 33] or by anti-CagA antibodies reacting with the host antigens on endothelial cells, uncovered during the inflammatory process [40, 51].

In conclusion, the present study supports the hypothesis of a relationship between Hp infections and CHD, which may result from the elevated levels of LBP and cross-reacting anti-Hsp60 IgG.

Acknowledgments

The study was supported by grants from the University of Lodz.

Conflict of interest

The authors declare no conflict of interest.

References

1. Chmiela M, Michetti P. Inflammation, immunity, vaccines for Helicobacter infection. *Helicobacter* 2006; 11 (Suppl. 1): 21-6.
2. Libby P, Theroux P. Pathophysiology of coronary artery disease. *Circulation* 2005; 111: 3481-8.
3. Chałubiński M, Wojdan K, Dorantowicz R, Jackowska P, Grzelak P, Broncel M. Comprehensive insight into im-

- immune regulatory mechanisms and vascular wall determinants of atherogenesis-emerging perspectives of immunomodulation. *Arch Med Sci* 2013; 9: 159-65.
4. Ertek S, Cicero A. Impact of physical activity on inflammation: effects on cardiovascular disease risk and other inflammatory conditions. *Arch Med Sci* 2012; 8: 794-804.
 5. Kleinbongard P, Schultz R, Heusch G. TNF-alpha in atherosclerosis, myocardial ischemia/reperfusion, remodeling and heart failure. *Heart Fail Rev* 2011; 16: 49-69.
 6. Baars T, Konorza T, Kahlert P, et al. Coronary aspirate TNF-alpha reflects saphenous vein bypass graft restenosis risk in diabetic patients. *Cardiovasc Diabetol* 2013; 12: 12.
 7. Espinola-Klein C, Rupprecht HJ, Blankenberg S, et al. Impact of infectious burden on progression of carotid atherosclerosis. *Stroke* 2013; 33: 2581-6.
 8. Matsuura E, Kobayashi K, Matsunami Y, et al. Autoimmunity, infectious immunity and atherosclerosis. *J Clin Immunol* 2009; 29: 714-21.
 9. Mendall MA, Goggin PM, Molineux N, et al. Relation of *Helicobacter pylori* infection and coronary heart disease. *Br Heart J* 1994; 71: 437-9.
 10. Longo-Mbenza B, Nsenga JN, Mokondjimobe E, et al. *Helicobacter pylori* infection is identified as a cardiovascular risk factor in Central Africans. *Vasc Health Risk Management* 2012; 8: 455-61.
 11. Jefferson SS, Gillespie BW, Aiello AE, Haan MN, Morgenstern LB, Lisabeth LD. Antibody levels to persistent pathogens and incident stroke in Mexican Americans. *PLoS One* 2013; 8: e65959.
 12. Khodaii Z, Hosain VH, Ghaderian SM, Najar RA, Panah AS. Association of *Helicobacter pylori* infection with acute myocardial infarction. *Coron Artery Dis* 2011; 22: 6-11.
 13. Kowalski M, Rees W, Konturek PC, et al. Detection of *H. pylori* specific DNA in human atheromatous coronary arteries and its association to prior myocardial infarction and unstable angina. *Dig Liver Dis* 2002; 34: 398-402.
 14. Akbas HS, Basyigit S, Suleymanlar I, et al. The assessment of carotid intima media thickness and serum paraoxonase-1 activity in *Helicobacter pylori* positive subjects. *Lipids Health Dis* 2010; 9: 92.
 15. Satoh H, Saijo Y, Yoshioka E, Tsutsui H. *Helicobacter pylori* infection is a significant risk for modified lipid profile in Japanese male subjects. *J Atheroscler Thromb* 2010; 17: 1041-8.
 16. Wierzbicki AS. Homocysteine and cardiovascular disease: a review of the evidence. *Diabetes Vasc Dis Res* 2007; 4: 143-9.
 17. Smiley ST, King JA, Hancock WW. Fibrinogen stimulates macrophage chemokine secretion through Toll-like receptor 4. *J Immunol* 2001; 167: 2887-94.
 18. Polyzos SA, Kountouras J, Zavos C, Deretzi G. The association between *Helicobacter pylori* infection and insulin resistance: a systemic review. *Helicobacter* 2011; 16: 79-88.
 19. Schöttker BEN, Adamu MA, Weck MN, Müller H, Brenner H. *Helicobacter pylori* infection, chronic atrophic gastritis and major cardiovascular events: a population based cohort study. *Atherosclerosis* 2012; 220: 569-74.
 20. Tsai CJ, Huang TY. Relation of *Helicobacter pylori* infection and angiographically demonstrated coronary artery disease. *Dig Dis Sci* 2000; 45: 1227-32.
 21. Christodoulou DK, Milionis HJ, Pappa P, et al. Association of *Helicobacter pylori* infection with cardiovascular disease – is it just a myth? *Eur J Intern Med* 2011; 22: 191-4.
 22. Tan HJ, Goh KL. Extragastrintestinal manifestations of *Helicobacter pylori* infection: facts or myth? A critical review. *J Dig Dis* 2012; 13: 342-9.
 23. Kaulgud RS, Kamath RL. Early prognosis of unstable angina patients with positive *H. pylori* IgG values. *Int J Biom Res* 2013; 4: 145-52.
 24. Schöttker B, Adamu MA, Weck MN, Müller H, Brenner H. *Helicobacter pylori* infection, chronic atrophic gastritis and major cardiovascular events: a population-based cohort study. *Atherosclerosis* 2012; 220: 569-74.
 25. Labarrere CA, Zaloga GP. C-reactive protein: from innocent bystander to pivotal mediator of atherosclerosis. *Circulation* 2004; 109: 27-33.
 26. Gensini GG. A more meaningful scoring system for determining the severity of coronary heart disease. *Am J Cardiol* 1983; 51: 606.
 27. Neeland IJ, Patel RS, Eshthardi P, et al. Coronary angiographic scoring systems. An evaluation of their equivalence and validity. *Am Heart J* 2012; 164: 547-52.
 28. Bielański W, Konturek SJ. New approach to 13C urea breath test capsule-based modification with low dose of 13C urea in the diagnosis of *Helicobacter pylori* infection. *J Physiol Pharmacol* 1996; 47: 545-53.
 29. Rechciński T, Chmiela M, Matecka-Panas E, Planeta-Matecka I, Rudnicka W. Serological indicators of *Helicobacter pylori* infection in adult dyspeptic patients and healthy blood donors. *Microbiol Immunol* 1997; 41: 387-93.
 30. Vorobjova T, Ren Z, Dunkley M, et al. Response of IgG1 and IgG2 subclasses to *Helicobacter pylori* in subjects with chronic inflammation of the gastric mucosa, atrophy and gastric cancer in a country with high *Helicobacter pylori* infection prevalence. *APMIS* 2006; 114: 372-80.
 31. Chmiela M, Ławnik M, Czkwianiec E, Rechciński T, Planeta-Matecka I, Rudnicka W. Systemic humoral response to *Helicobacter pylori* in children and adults. *Arch Immunol Ther Exp* 1998; 46: 161-7.
 32. Weintraub A. Immunology of bacterial polysaccharide antigens. *Carbohydr Res* 2003; 338: 2539-47.
 33. Grebowska A, Rechciński T, Moran A, et al. Increased levels of immunoglobulin and non-immunoglobulin markers of host response to Hp LPS in the patients with coronary artery disease (CAD). *Curr Trends Immunol* 2006; 7: 85-96.
 34. Sims FH, Gavin JB, Edgar S, Toelmeyer T. Diffusion of gammaglobulin into the arterial wall identifies localized entry of lipid and cells in atherosclerosis. *Coron Artery Dis* 2000; 12: 21-30.
 35. Haynes WG, Stanford C. Periodontal disease and atherosclerosis: from dental to arterial plaque. *Arterioscler Thromb Vasc Biol* 2003; 23: 1309-11.
 36. Muscari A, Bazzoli C, Puddu GM, et al. Increased serum IgA levels in subjects with previous myocardial infarction or other major ischaemic events. *Cardiology* 1993; 83: 383-9.
 37. Berstad A, Kilian M, Valnes KN, Brandtzaeg P. Increased mucosal production of monomeric IgA1 but no IgA1 protease activity in *Helicobacter pylori* gastritis. *Am J Pathol* 1999; 155: 1097-104.
 38. Virella G, Atchley D, Koskinen S, Zheng D, Lopes-Virella MF; the DCCTI/EDIC Research Group. Proatherogenic and proinflammatory properties of immune complexes prepared with purified human oxLDL antibodies and human oxLDL. *Clin Immunol* 2002; 105: 81-2.
 39. Oshima T, Ozono R, Yano Y, et al. Association of *Helicobacter pylori* infection with systemic inflammation and

- endothelial dysfunction in healthy male subjects. *J Am Coll Cardiol* 2005; 45: 1219-22.
40. Davington J, Granz P. Role of endothelial dysfunction in atherosclerosis. *Circulation* 2004; 109 (Suppl. 1): 1127-32.
 41. Sheikine Y, Hansson GK. Chemokines and atherosclerosis. *Ann Med* 2004; 36: 98-118.
 42. Hirsch AT, Folsom AR. The continuum risk. Vascular pathophysiology, function and structure. *Circulation* 2004; 110: 2774-77.
 43. Edfeldt K, Bennet AM, Eriksson P, et al. Association of hypo-responsive Toll-like receptor 4 variants with risk of myocardial infarction. *Eur Heart J* 2004; 25: 1447-53.
 44. Ferencik M, Stvrtinova V, Hulin I. Defects in regulation of local immune responses resulting in atherosclerosis. *Clin Dev Immunol* 2005; 12: 225-34.
 45. Rozankovic PB, Huzjan AL, Cupic H, Bencic IJ, Basic S, Demarin V. Influence of CagA-positive *Helicobacter pylori* strains on atherosclerotic carotid disease. *J Neurol* 2011; 258: 753-61.
 46. Lepper PM, Schumann C, Triantafilou K, et al. Association of lipopolysaccharide-binding protein and coronary artery disease in men. *J Am Coll Cardiol* 2007; 50: 25-31.
 47. Duzendorfer S, Lee MK, Soldau K, Tobias PS. Toll-like receptor 4 functions intracellularly in human coronary artery endothelial cells: roles of LBP and sCD14 in mediating LPS-responses. *FASEB J* 2004; 18: 1117-9.
 48. Liuba P, Pesonen E, Paakkari I, et al. Co infection with *Chlamydia pneumoniae* and *H. pylori* results in vascular endothelial dysfunction and enhanced VCAM-1 expression in apoE-knockout mice. *J Vasc Res* 2003; 40: 115-22.
 49. Agucjof O, Mayo K, Montciro L, Doutrcmcpuich F, Dou-tremepuich C, Megraud F. Increase of arterial thrombosis parameters in chronic *Helicobacter pylori* infection in mice. *Tromb Res* 2003; 108: 245-8.
 50. Erkkilä L, Laitinen K, Haasio K, et al. Heat shock protein 60 autoimmunity and early lipid lesions in cholesterol-fed C57BL/6J mice during *Chlamydia pneumoniae* infections. *Atherosclerosis* 2004; 177: 321-8.
 51. Franceschi F, Sepulveda AR, Gasbarrini A, et al. Cross-reactivity of anti-CagA antibodies with vascular wall antigens: possible pathogenic link between *Helicobacter pylori* infection and atherosclerosis. *Circulation* 2002; 106: 430-4.