

STAT3 promotes chronic lymphocytic leukemia progression through upregulating SMYD3 expression

Wei Ma¹, Yingying Zhang², Yu Qi³, Shidong Guo⁴

¹Hematology and Oncology Department, Dongzhimen Hospital, Beijing University of Chinese Medicine, Beijing, China

²Scientific Research Department, Dongzhimen Hospital, Beijing University of Chinese Medicine, Beijing, China

³Nursing Department, Dongzhimen Hospital, Beijing University of Chinese Medicine, Beijing, China

⁴Emergency Department, China-Japan Friendship Hospital, Beijing, China

Submitted: 3 May 2018

Accepted: 14 July 2018

Arch Med Sci 2019; 15 (5): 1163–1175

DOI: <https://doi.org/10.5114/aoms.2018.77733>

Copyright © 2018 Termedia & Banach

Corresponding author:

Shidong Guo

Emergency Department
China-Japan

Friendship Hospital

No. 2 Sakura East St

Chaoyang District

Beijing 100029, China

Phone/fax:

+86 010 84205185

E-mail: guoshidong_@126.com

Abstract

Introduction: This study was designed to investigate the roles of STAT3 and SMYD3 in chronic lymphocytic leukemia and the regulatory relationship between STAT3 and SMYD3 in chronic lymphocytic leukemia.

Material and methods: The expression of STAT3 and SMYD3 was determined by RT-qPCR and western blot in chronic lymphocytic leukemia samples and cells (MEC1, CLL). Small interfering RNA was used to knock down the mRNA level of *STAT3* and the pcDNA3.1-SMYD3 plasmid was used to construct a SMYD3 overexpression model. An MTT assay was performed to evaluate cell proliferation. A transwell assay was used to detect cell invasion ability. Afterwards, a luciferase reporter assay and chromatin immunoprecipitation experiment (ChIP assay) were applied to confirm the correlation between STAT3 and SMYD3.

Results: STAT3 was highly expressed in chronic lymphocytic leukemia mononuclear cells and cancerous cell lines. STAT3 knockdown dramatically inhibited the mRNA and protein expression of *SMYD3* in MEC1 and CLL cell lines. The luciferase reporter assay combined with the ChIP assay revealed that STAT3 bound to the promoter region of *SMYD3* and contributed to the transcription of *SMYD3*. Knockdown of STAT3 positively correlated with inhibition of cell proliferation and invasion abilities, while overexpression of *SMYD3* negatively correlated with inhibition of cell proliferation and invasion.

Conclusions: STAT3 may promote chronic lymphocytic leukemia progression through elevating *SMYD3* expression. Targeting STAT3 and *SMYD3* may be a potential therapeutic strategy for chronic lymphocytic leukemia.

Key words: chronic lymphocytic leukemia, STAT3, SMYD3.

Introduction

Chronic lymphocytic leukemia (CLL) is a serious disease of inherent immune dysfunction, which is the major type of adult leukemia in the western world. The defect in cell apoptosis and proliferation causes accumulation of leukemic cells, which was a typical characteristic of CLL [1]. This disease has a high incidence in North America and among elderly people, especially those more than 72 years old [2]. The clinical course of CLL is remarkably heterogeneous. Some patients need no treatment,

while some patients die rapidly [3]. Patients with CLL are more likely to suffer from chronic infections, which lead to 50–60% of all deaths [4]. With the advances in therapeutic strategies, the relative 5-year survival rate rose from 67.5% in 1975 to 87.9% in 2007 [5], but drug resistance was still a formidable obstacle for some patients [6]. Novel drug treatment strategies for CLL have shifted their focus from nonspecific chemo-immunotherapy agents with potential side effects to more specific drugs with maximal efficacy and minimal toxicity [7]. Thus, there is a necessity to elucidate the underlying mechanism of CLL and offer a better therapy target for long-term treatments.

The balance between cell proliferation and cell apoptosis is essential for health. It has been widely recognized that tumor formation is a result of abnormal cell accumulation. Chronic lymphocytic leukemia is a malignant hematologic tumor due to the accumulation of abnormal monoclonal mature B lymphocytes [8]. Thus, inhibiting cell proliferation and promoting apoptosis are the common strategies for cancer prevention and treatment. Furthermore, CLL neoplastic cells can easily circulate through peripheral blood and secondary lymphoid organs, whereby the tumor metastasizes [9]. Distant metastasis often shortens the patient's survival. Therefore, inhibition of tumor cell proliferation and invasion was essential for better outcome of CLL patients.

The premises for a transcription factor to be a potential therapeutic target in CLL are as follows. First, it should be overexpressed in CLL, and then its oncogenic mechanisms should be well elucidated in other tumors. Signal transducer and activator of transcription 3 (STAT3) is one of the transcription factors which meet these criteria as a potential therapeutic target in CLL. STAT3 was highly expressed in many cancers and was found to positively regulate neoplastic cell survival and proliferation, tumor angiogenesis, migration [10, 11]. Thus, STAT3 played a pivotal role in cancer initiation and progression [12]. The JAK/STAT3 signaling pathway was activated in various cells, thus leading to cell accumulation. Additionally, STAT3 has opposing impacts on inflammation, which means that it may influence the tumor microenvironment to facilitate tumor progression. Several solid tumors, hematologic malignancies and some tumor cells have found STAT3 constitutive phosphorylation on tyrosine residues [13]. Over-activated STAT3 facilitated tumor growth and deletion of it prevented many epithelial cancers [14] and hematologic tumors [15]. In CLL, STAT3 is constitutively phosphorylated on serine 727 residues and facilitates CLL cell survival [16]. Recently, some researchers found that STAT3 knockdown significantly decreased the production of IL-10 in CLL cells, thus leading to immu-

nodeficiency in patients [17]. From these observations we can easily assume that STAT3 contributed to CLL initiation and progression, but the underlying pathways have not been interpreted in detail.

Recently, it has been accepted that dysregulation of histone methylation has an impact on tumorigenesis. SET and MYND domain-containing protein 3 (SMYD3), as one member of the SMYD family, is a histone methyltransferase which participates in various pathological processes and can promote many cancers' formation and progression by activating target gene transcription [18]. SMYD3 was associated with epithelial-mesenchymal transition (EMT), cell proliferation and oncogene activation [19]. Overexpression of SMYD3 has been implicated in many cancers, such as colorectal carcinoma, hepatocellular carcinoma, and breast cancer, suggesting a carcinogenic role of SMYD3 [18, 20]. In human hepatocellular carcinoma (HCC), the expression of SMYD3 was negatively related to overall survival, new tumor occurrence, tumor grade and chemical drug resistance, suggesting the prognostic value of SMYD3 in HCC [19]. But the association between SMYD3 and CLL has not been fully investigated.

This study was performed to gain insights into the role of STAT3 and SMYD3 in CLL. We first detected the mRNA and protein expression of *STAT3* in CLL neoplastic cells and cancerous cell lines, and then conducted cell transfection to knock down or overexpress specific proteins to elucidate the correlation between STAT3 and SMYD3. Furthermore, the effects of STAT3 reduction and SMYD3 overexpression on cell proliferation and invasion were investigated in two cancer cell lines, MEC1 and CCL. Our present data suggest that STAT3 can up-regulate SMYD3 to promote chronic lymphocytic leukemia cell proliferation and invasion.

Material and methods

Collection of chronic lymphocytic leukemia patients' samples

Inclusion and exclusion criteria for chronic lymphocytic leukemia patients: All patients were clinically diagnosed with chronic lymphocytic leukemia and had not received any treatment. Written informed consent was obtained from all volunteers. Sample cells were harvested and isolated from peripheral blood cells of 77 chronic lymphocytic leukemia patients and 77 normal volunteers. Magnetic cell sorting (MACS) of Lymphoprep-separated buffy coats with MACS CD19 Microbeads (Miltenyi Biotec, Bergisch Gladbach, Germany) were applied to isolated different cells. All experiments were performed in accordance with the guidelines approved by Beijing University of Chinese Medicine Affiliated Dongzhimen Hospital

Table I. Primers for RT-qPCR

Gene	Forward	Reverse
STAT3	CAGCAGCTTGACACACGGTA	AAACACCAAAGTGGCATGTGA
SMYD3	CGCGTCGCCAAATACTGTAGT	CAAGAAGTCGAACGGAGTCTG
GAPDH	GGAGCGAGATCCCTCCAAAAT	GGCTGTTGTCATACTTCTCATGG

and were done according to the principles of the Declaration of Helsinki.

Cell culture

The human chronic lymphocytic leukemia cancerous cell lines MEC1 (17p deletion) and CCL were obtained from American Type Culture Collection (ATCC) and maintained with DMEM (Gibco, USA) growth medium containing 10% fetal bovine serum (FBS) (HyClone) in culture flasks. Cells were incubated at 37°C with 5% CO₂ in air.

Quantitative real-time PCR (RT-qPCR)

The RNAs (1 µg per sample) were extracted with TRIZOL reagent and isolated from patients' neoplastic B cells, normal volunteers' B cells and cancerous cell lines after specific treatments. After being generated with M-MLV reverse transcriptase (Invitrogen), cDNAs were used and incubated with SYBR Green reagents (Roche) and specific primers (Table I) following the manufacturer's instructions. GAPDH was used as an internal control. StepOne Software v2.1 (Applied Biosystems) was used to detect the cycle threshold (Ct) values. The expression level of the target genes relative to GAPDH was calculated as $2^{-\Delta\Delta CT}$.

Western blot analysis

Cells were homogenized on ice in cell lysis buffer (Cell Signaling Technology, USA) containing proteinase inhibitor cocktail and phosphatase inhibitors. After being centrifuged at 14 000 × g for 15 min, the protein supernatant was determined with a Bio-Rad DC protein assay kit (Bio-Rad Laboratories). Samples containing 100 µg of protein and SDS-PAGE loading buffer with 4% β-mercaptoethanol were heated at 100°C for 7 min and then loaded on a 10% polyacrylamide gel. After electrophoretic transfer to nitrocellulose membranes, membranes were incubated with anti-STAT3 or anti-SMYD3 or GAPDH antibodies at 4°C overnight. Then membranes were washed 3 times with wash buffer and incubated with secondary antibody conjugated with peroxidase for an hour. The signal was detected by chemiluminescence using the ECL-Plus detection system (PerkinElmer Life Sciences). All antibodies for western blot were obtained from Abcam (Cambridge, MA, USA).

Cell transfection

Small interfering RNAs (siRNAs) for human STAT3 and pcDNA3.1-SMYD3 plasmid were purchased from Gene Pharma in Shanghai, China. siRNA sequences are presented in Table II. For transfections, cells were plated in 6-well plates at a concentration of 1×10^7 /ml. After 24 h, cells were transfected with siRNA or plasmid using Lipofectamine 3000 (Life Technology, MD, USA) according to the manufacturer's instructions. The mRNA and protein levels were assessed 48 h later.

Luciferase reporter assay

Cells were maintained in 24-well plates and were transfected with siRNA-STAT3 for a certain period. A Renilla luciferase-containing plasmid, which is driven by a thymidine kinase promoter, was taken as a transfection efficiency internal control. A dual luciferase reporter assay system was used to determine luciferase activity following the manufacturer's instructions (Promega, Madison, WI).

Chromatin immunoprecipitation

A chromatin immunoprecipitation (ChIP) assay kit (Millipore) was employed following the manufacturer's manual. Cells were plated at a density of 1×10^7 cells/100-mm petri dish for 2 days in GM. After 1% formaldehyde was added to the medium, the cells were removed and suspended in a cell-lysis buffer. After centrifugation, the resulting cell pellet was resuspended in a nuclear-lysis buffer for 10 min. The sample was then sonicated to produce DNA fragments at lengths of 200–600 bp, followed by incubation with anti-SMYD3 antibodies (or IgG) and protein A/G magnetic beads at 4°C overnight. DNA-protein complexes were collected and treated with proteinase K at 62°C for

Table II. siRNA sequence of STAT3

Gene	Sequence
siRNA1	5'-CCACTTTGGTGTTCATAA-3'
siNC-1	5'-GCCCAAACGACTACGAAGT-3'
siRNA2	5'-GCAACAGATTGCCTGCATT-3'
siNC-2	5'-GGACAAATATCAAGCGGAA-3'

2 h. After DNA purification, the DNA fragments that potentially interacted with SMYD3 were analyzed by RT-qPCR using specific primers. IgG was used as a negative control.

Invasion assay

Cell invasion ability was detected using a 24-well Transwell chamber with an 8 μ m pore (Costar), and the inserts were coated with 20 μ l Matrigel (1 : 3 dilution, BD Bioscience). After transfection for 48 h, cells were collected, transferred to the upper Matrigel chamber in a 100 μ l serum-free medium containing 3×10^5 cells, and incubated for 18 h. A medium supplemented with 10% FBS was added to the lower chamber as the chemo-attractant. Then, the non-invading cells on the upper membrane surface were removed with a cotton tip, and the cells that passed through the filter were fixed in 4% paraformaldehyde and then stained with hematoxylin.

MTT cell growth assay

Cell proliferation was determined with an MTT colorimetric assay. Cells were seeded in multi-well plates in a concentration of 5×10^3 per well for all cell lines using DMEM medium containing 10% FBS. After transfection for 20, 44, and 68 h, MTT solution (5 mg/ml, Sigma) was added to each well and continually cultivated for another 4 h, followed by incubation with 10% sodium dodecyl sulfate (SDS) in 0.01N HCl overnight at 37°C. Absorbance was measured at 490 nm using an ELISA plate reader.

Statistical analysis

All experiments were repeated three times and data were analyzed with GraphPad prism 6. Data were expressed as means \pm SD. One-way ANOVA was used to compare means in different experimental groups and Turkey's test was used for multiple comparison. Differences are considered statistically significant at $p < 0.05$.

Results

STAT3 and SMYD3 were highly expressed in both chronic lymphocytic leukemia tumor samples and cell lines

The neoplastic B cells from chronic lymphocytic leukemia patients and normal volunteers' B cells were collected and detected for STAT3 mRNA expression. As shown in Figure 1, the mRNA level of STAT3 (Figure 1 A, $p = 0.0045$) and SMYD3 (Figure 1 E, $p = 0.0034$) was dramatically elevated in sample cells compared with normal volunteers' B cells. The clinicopathological features of CLL patients are presented in Table III. We found that

chromosome abnormalities were detected in 59 of 77 (76.6%) CLL patients by molecular cytogenetics (FISH) and G-banding cytogenetic analysis. 13q14 deletion (16.9%) was the most common finding followed by 17p13 deletion (13.0%) and trisomy 12 (7.8%). 11q23 deletion (6.5%) was also detected, as were several less frequent chromosome abnormalities. Consistently, the mRNA expression of STAT3 (Figure 1 B, $p = 0.0057$, $p = 0.0049$) and SMYD3 (Figure 1 F, $p = 0.0048$, $p = 0.0046$) in two cancerous cell lines, MEC1 and CLL, was significantly higher than in normal B cells. Moreover, the protein expression of STAT3 was determined by western blotting and normalized with GAPDH. Compared with normal B cells, protein levels of STAT3 (Figures 1 C and D, $p = 0.0061$, $p = 0.0058$) and SMYD3 (Figures 1 G and H, $p = 0.0055$, $p = 0.0060$) in MEC1 and CLL both were increased significantly. Collectively, these data suggested that STAT3 and SMYD3 are highly expressed in chronic lymphocytic leukemia and may play an important role in its evolution and progression.

Positive feedback regulation relationship between STAT3 and SMYD3

To investigate the effect of down-regulating STAT3 on the expression of SMYD3, we used two small interfering RNAs (siRNA1-STAT3, siRNA2-STAT3) to knock down the mRNA expression of STAT3 in two cancerous cell lines. After transfection, the STAT3 mRNA expression in the MEC1 cell line was dramatically decreased by about 70% for siRNA1-STAT3 ($p = 0.0037$) and 50% for siRNA2-STAT3 ($p = 0.0044$) (Figure 2 A). Accordingly, SMYD3 mRNA in MEC1 was respectively decreased to 40% ($p = 0.0042$) and 56% ($p = 0.0048$). The protein level was also detected; it showed a 50–60% reduction for STAT3, and a 40–45% reduction for SMYD3 (Figures 2 C, D) ($p < 0.01$). The same transfection was conducted in the CCL cell line. The mRNA and protein expression of STAT3 were similarly changed in CCL after transfection, and the reduction was slightly stronger than that for MEC1, suggesting a better effect for transfection. With the reduction of STAT3, mRNA and protein expression of SMYD3 were decreased by approximately a half (Figures 2 B, E, F) ($p < 0.01$). To verify the relationship between STAT3 and SMYD3, a luciferase reporter assay and a CHIP assay were performed after transfection. As Figure 2 G shows, the relative luciferase activity of SMYD3 was dramatically decreased in both transfection groups compared with the negative control group (si-NC), and the siRNA1-STAT3 group showed a better reduction. As Figure 2 H suggests, compared with IgG (as a base level control), SMYD3 expression was obviously higher than IgG. After STAT3 siRNA transfection, SMYD3 expression

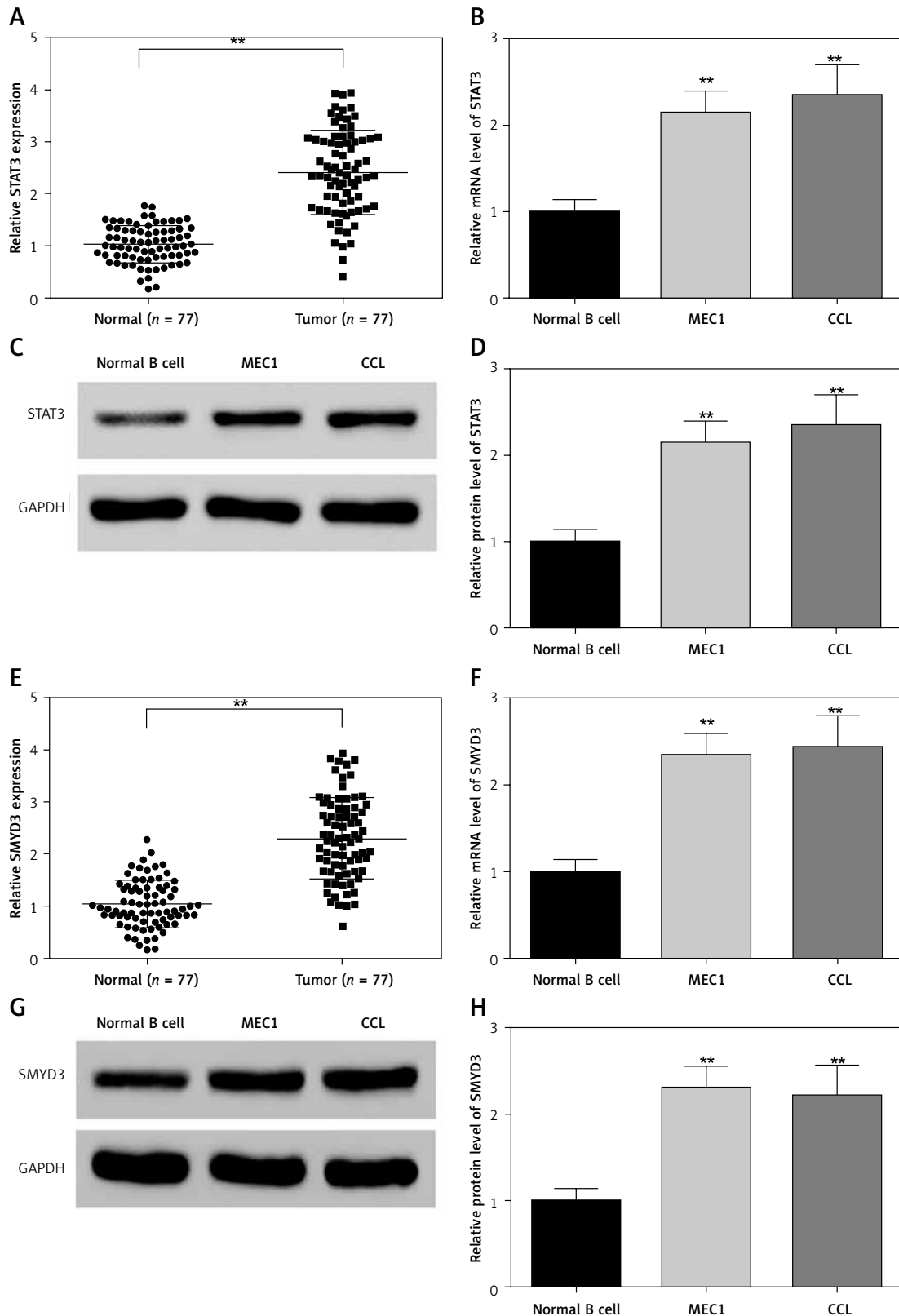


Figure 1. Expression of STAT3 and SMYD3 was up-regulated in chronic lymphocytic leukemia and cancerous cell lines. The mRNA expression level of *STAT3* (A) and *SMYD3* (E) was detected in chronic lymphocytic leukemia patients' sample cells and normal volunteers' B cells by RT-qPCR analysis. **Represents $p < 0.01$, compared with normal volunteers' B cells. The mRNA expression level of *STAT3* (B) and *SMYD3* (F) was detected by RT-qPCR in MEC1 and CCL cancerous cell lines. The protein expression level of *STAT3* (C, D) and *SMYD3* (G, H) was detected by western blot analysis. Data are means \pm SD. **Represents $p < 0.01$, compared with normal B cells

Table III. Clinicopathological characteristics of CLL patients

Characteristics	Values
Median age (range) [years]	72 (28–96)
Age ≤ 60	23 (30%)
Age > 60	54 (70%)
Gender:	
Male	41
Female	36
Blood counts:	
Total white blood cells [$\times 10^9/l$]	42 (5.3–377)
Lymphocytes [$\times 10^9/l$]	23 (4.73–526.1)
Hemoglobin [g/dl]	11 (3.3–15)
Platelets [$\times 10^9/l$]	169 (55–659)
Binet stage, n (%):	
A	44 (57.1)
B	23 (42.9)
C	10 (13)
Rai stage, n (%):	
0	21 (27.3)
I–II	35 (45.4)
III–IV	21 (27.3)

was significantly reduced and siRNA1 showed a better inhibition effect on SMYD3 ($p = 0.0051$). Collectively, these data showed that STAT3 may increase the oncogene SMYD3 to promote chronic lymphocyte leukemia progression. Figure 2 indicates that low expressed STAT3 suppressed the expression of SMYD3.

Then we used two small interfering RNAs (siRNA1-SMYD3, siRNA2-SMYD3) to knock down the mRNA expression of SMYD3 in two cancerous cell lines to investigate the effect of down-regulating SMYD3 on the expression of STAT3, and repeated the above experiment. All the results are shown in Figure 3, which indicates that low expressed SMYD3 suppressed the expression of STAT3. Hence, we concluded that there was a positive regulation relationship between STAT3 and SMYD3.

STAT3 promoted cell proliferation in chronic lymphocytic leukemia through increasing SMYD3 expression

In order to determine whether STAT3 promotes cell proliferation through targeting SMYD3, we designed two sets of experiments. In the first set of experiments, the results of which are shown in Figure 4, we used siRNA1-STAT3 to reduce SMYD3 expression and the pcDNA3.1-SMYD3 plasmid for SMYD3 overexpression, siRNA1-SMYD3 to reduce SMYD3 expression and the pcDNA3.1-STAT3 plas-

mid for SMYD3 overexpression. Then an MTT assay was performed to determine cell proliferation in MEC1 and CLL. We found that cell proliferation in MEC1 was strongly inhibited when SMYD3 was decreased by STAT3 reduction, and was increased with SMYD3 overexpression. When siRNA1-STAT3 transfection combined with SMYD3 overexpression, cell proliferation could be restored and little difference was observed compared with the negative control (Figure 4 A) ($p = 0.0072$). MTT assay results in CLL showed a similar effect to that in MEC1, though the inhibition or elevation had no significance (Figure 4 B). Figures 4 C and D indicate that up-regulating STAT3 significantly increased cell proliferation but it was attenuated by adding siRNA-SMYD3 ($p = 0.0061$). Taken together, these data showed that STAT3 promoted cell proliferation in chronic lymphocytic leukemia through increasing SMYD3 expression.

STAT3 promoted invasion in chronic lymphocytic leukemia through increasing SMYD3 expression

Transwell assays were performed to detect cell invasion ability changes after applying identical transfection treatments to MEC1 and CLL cell lines also in two sets of experiments as mentioned above. We found that the invasion ability of MEC1 was significantly restrained by STAT3 down-regulation ($p = 0.0083$), while it was dramatically facilitated by SMYD3 overexpression compared with the NC group ($p = 0.0039$). Also, the invasion ability of MEC1 remained at its original level when the combination of siRNA1-STAT3 and pcDNA3.1-SMYD3 was used (Figures 5 A, B). In CLL, STAT3 low expression correlated with inhibition of invasion, while SMYD3 high expression was related to acceleration of invasion. Not surprisingly, when these two treatments were combined, the invasion rate returned to the NC level (Figures 5 C, D). Figure 6 indicated that up-regulating STAT3 significantly increased cell invasion in these two cell lines, but was restored to the NC level by adding siRNA-SMYD3. Altogether, these data suggested that STAT3 may accelerate invasion ability through upregulating SMYD3 expression.

Discussion

In the samples from CLL patients, STAT3 was highly expressed compared with the normal volunteers' B cells, indicating that STAT3 may play a role in CLL evolution. In vitro, we found that reduced STAT3 expression attenuated the cell proliferation and inhibited invasion in cancer cell lines MEC1 and CLL. The reduced expression of oncogenic SMYD3 was closely related to STAT3 knockdown. Liu *et al.* reported that overexpression of SMYD3

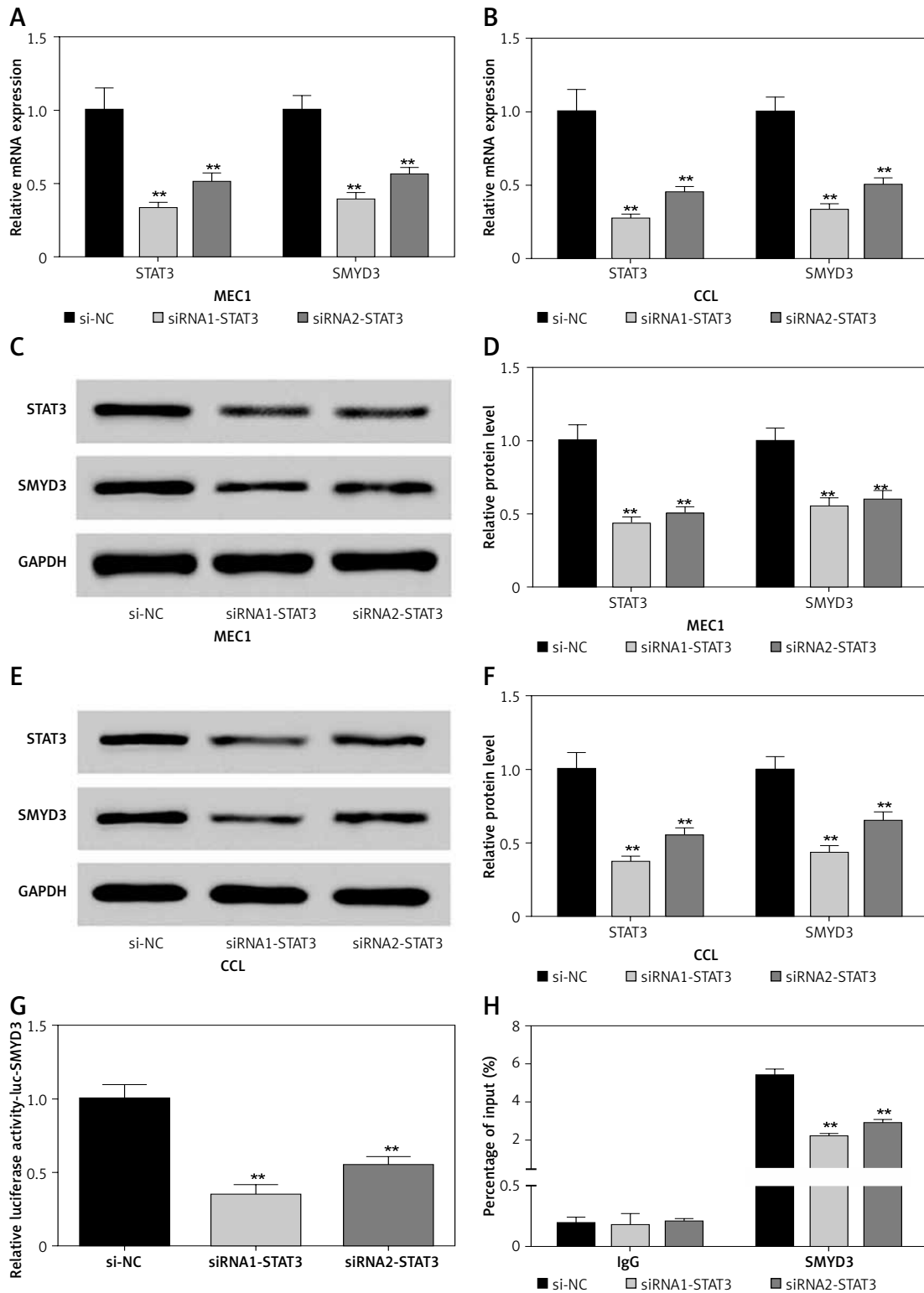


Figure 2. Knockdown of STAT3 restrained expression of SMYD3. Cells were plated into multi-well plates and divided into 3 groups to apply different transfection. si-NC group represents transfection with scramble siRNA, siRNA1-STAT3 group transfection with siRNA1- STAT3, siRNA2-STAT3 group transfection with siRNA2- STAT3. **A** – mRNA expression of *STAT3* and *SMYD3* in MEC1 cell line was detected by RT-qPCR. **B** – mRNA expression of *STAT3* and *SMYD3* in CCL cell line was detected by RT-qPCR. **C, D** – Protein expression of *STAT3* and *SMYD3* in MEC1 cell line was detected by western blotting. **E, F** – Protein expression of *STAT3* and *SMYD3* in CCL cell line was detected by western blotting. **G** – mRNA correlation between *STAT3* and *SMYD3* was investigated through luciferase reporter experiment. **H** – Protein correlation between *STAT3* and *SMYD3* was investigated through co-immunoprecipitation experiment. Normalized by IgG. Data are means \pm SD. ** $P < 0.01$, compared with si-NC group.

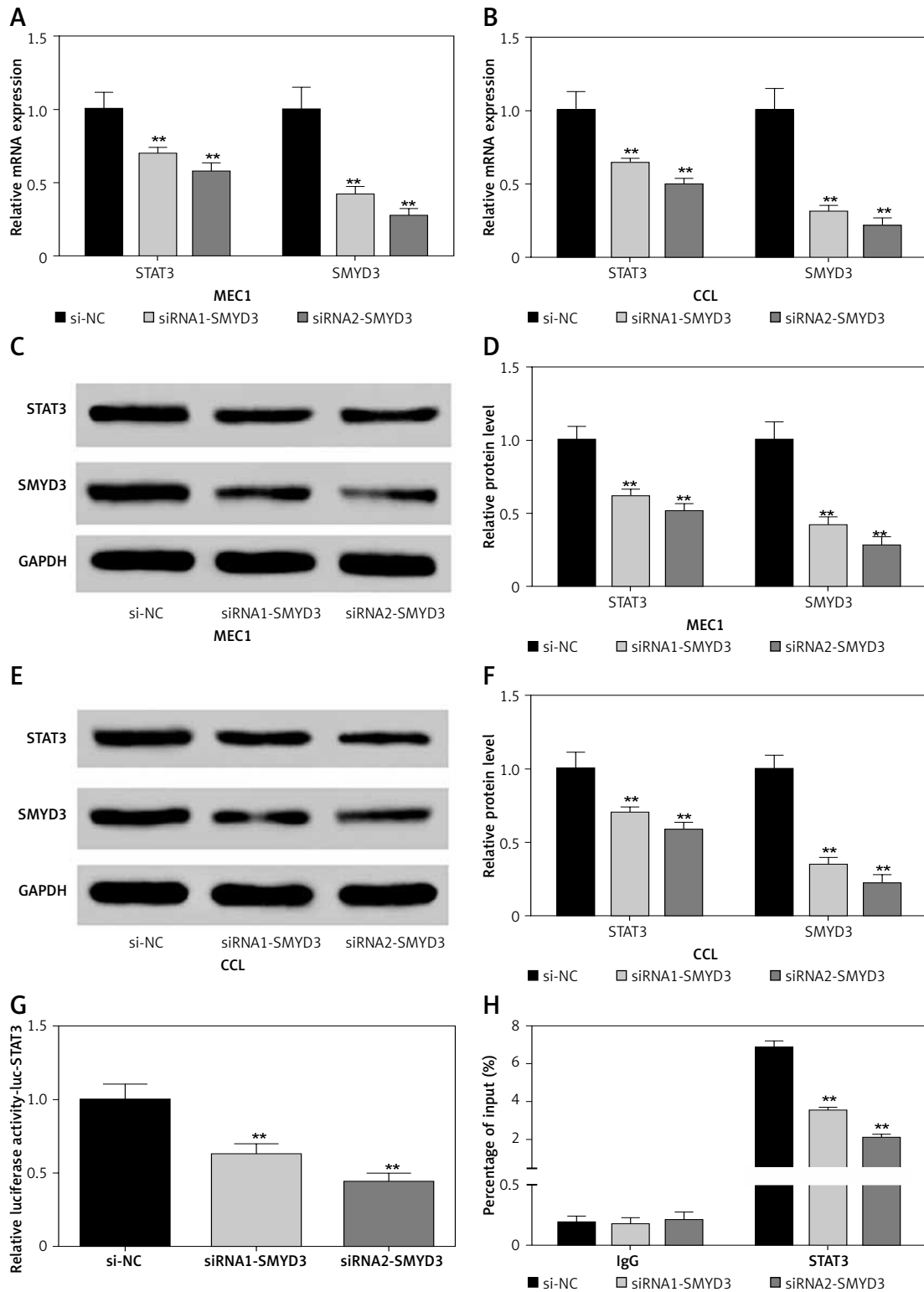


Figure 3. Knockdown of SMYD3 restrained expression of STAT3. Cells were plated into multi-well plates and divided into 3 groups to apply different transfection. si-NC group represents transfection with scramble siRNA, siRNA1-SMYD3 group transfection with siRNA1- SMYD3, siRNA2-SMYD3 group transfection with siRNA2-SMYD3. **A** – mRNA expression of *STAT3* and *SMYD3* in MEC1 cell line was detected by RT-qPCR. **B** – mRNA expression of *STAT3* and *SMYD3* in CCL cell line was detected by RT-qPCR. **C, D** – protein expression of *STAT3* and *SMYD3* in MEC1 cell line was detected by western blotting. **E, F** – Protein expression of *STAT3* and *SMYD3* in CCL cell line was detected by western blotting. **G** – mRNA correlation between *STAT3* and *SMYD3* was investigated through luciferase reporter experiment. **H** – Protein correlation between *STAT3* and *SMYD3* was investigated through co-immunoprecipitation experiment. Normalized by IgG

Data are means ± SD. ***P* < 0.01, compared with si-NC group.

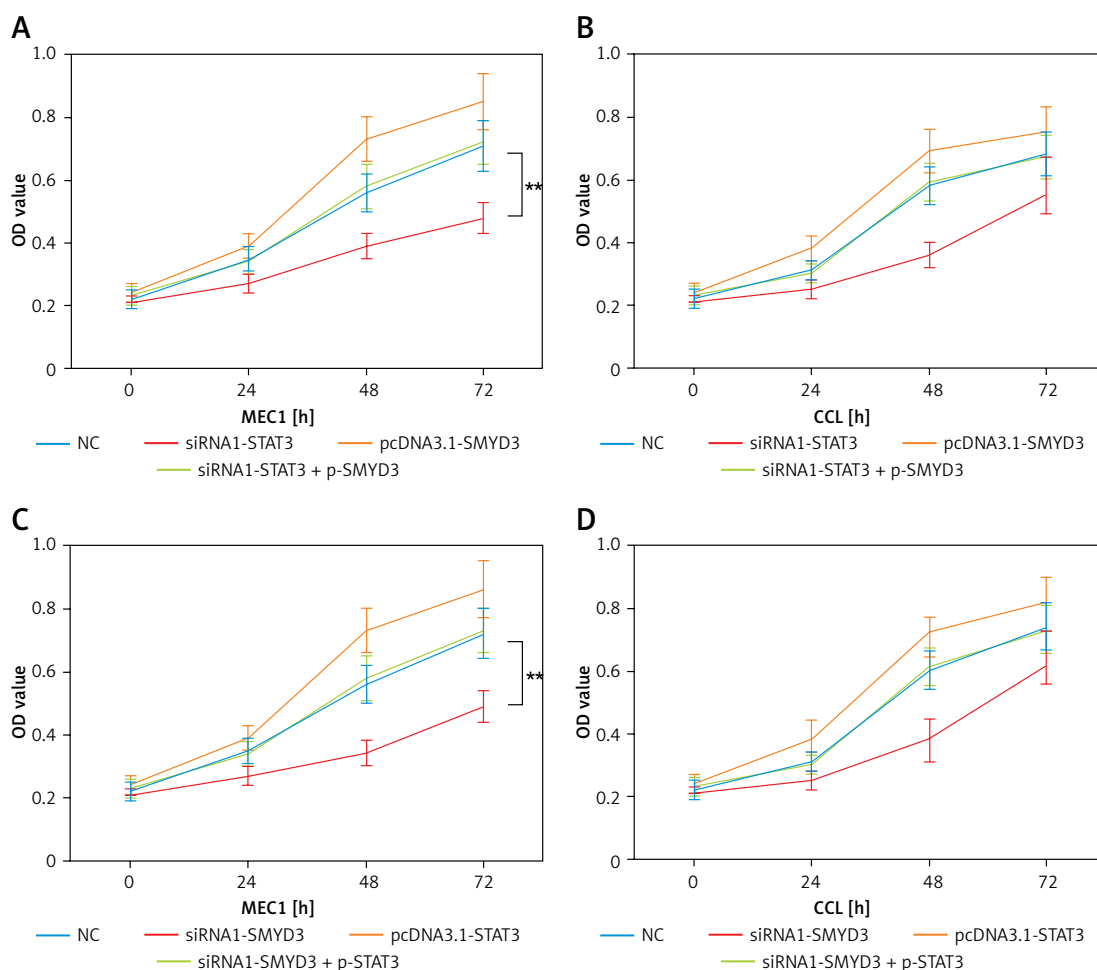


Figure 4. SMYD3 promoted cell proliferation in MEC1 and CCL cancerous cells through increasing STAT3 expression. Cells were plated into multi-well plates and divided into four groups to apply four different treatments: NC group, negative control, STAT3 knockdown group, indicating transfection with siRNA1-STAT3, SMYD3 overexpression group, indicating transfection with pcDNA3.1-SMYD3 vectors and combination group, indicating transfection with siRNA-STAT3 and pcDNA3.1-SMYD3. **A** – Cell viability was detected in MEC1 cell line by MTT assay. **B** – Cell viability was detected in CCL cell line by MTT assay. **C** – Cell viability was detected in MEC1 cell line by MTT assay. **D** – Cell viability was detected in CCL cell line by MTT assay (B)

was associated with increased STAT3 activation in gastric cancer [21], and Sarris *et al.* found that in liver and colon SMYD3 functions in the nucleus, stimulating the transcription of several key regulators involved in cell proliferation, epithelial-mesenchymal transition, and the JAK/Stat3 oncogenic pathway [19]. Thus we speculated that the regulation by STAT3 of cell proliferation and invasion may depend on oncogenic SMYD3. While SMYD3 overexpression dramatically facilitated cell proliferation and invasion, the combination of STAT3 reduction and SMYD3 overexpression restored the cell function back to the basic level, perfectly certifying the assumption. Collectively, our study suggests that STAT3 can promote chronic lymphocytic leukemia progression through up-regulated oncogenic SMYD3 expression.

It has been demonstrated frequently that STAT3 participated in numerous cancers including both solid and hematologic tumors [22]. STAT3 is in-

involved in inflammation and signal initiation. Activated STAT3 protein translocates into the nucleus to regulate gene transcription [23]. In CLL, STAT3 is constitutively and exclusively phosphorylated [16, 24, 25], but the downstream signal pathways related to its function remain unknown. Doshi *et al.* reported that STAT3 may mediate C6-ceramide-induced cell death in CLL [26]. More research suggested that STAT3 intertwined with NF- κ B to promote CLL inflammation [27]. Rozovski *et al.* [28] found that the JAK/STAT3 signaling pathway was activated in CLL through B-cell receptor stimulation, then anti-apoptotic signals were activated. When STAT3 expression levels were sufficiently high, STAT3 could also activate pro-apoptotic mechanisms and induce cell apoptosis in CLL [29]. Except for apoptosis, STAT3 activation was found to regulate every step of cancer metastasis [30]. One of the key steps in tumor metastasis is invasion to the extracellular matrix, which was reg-

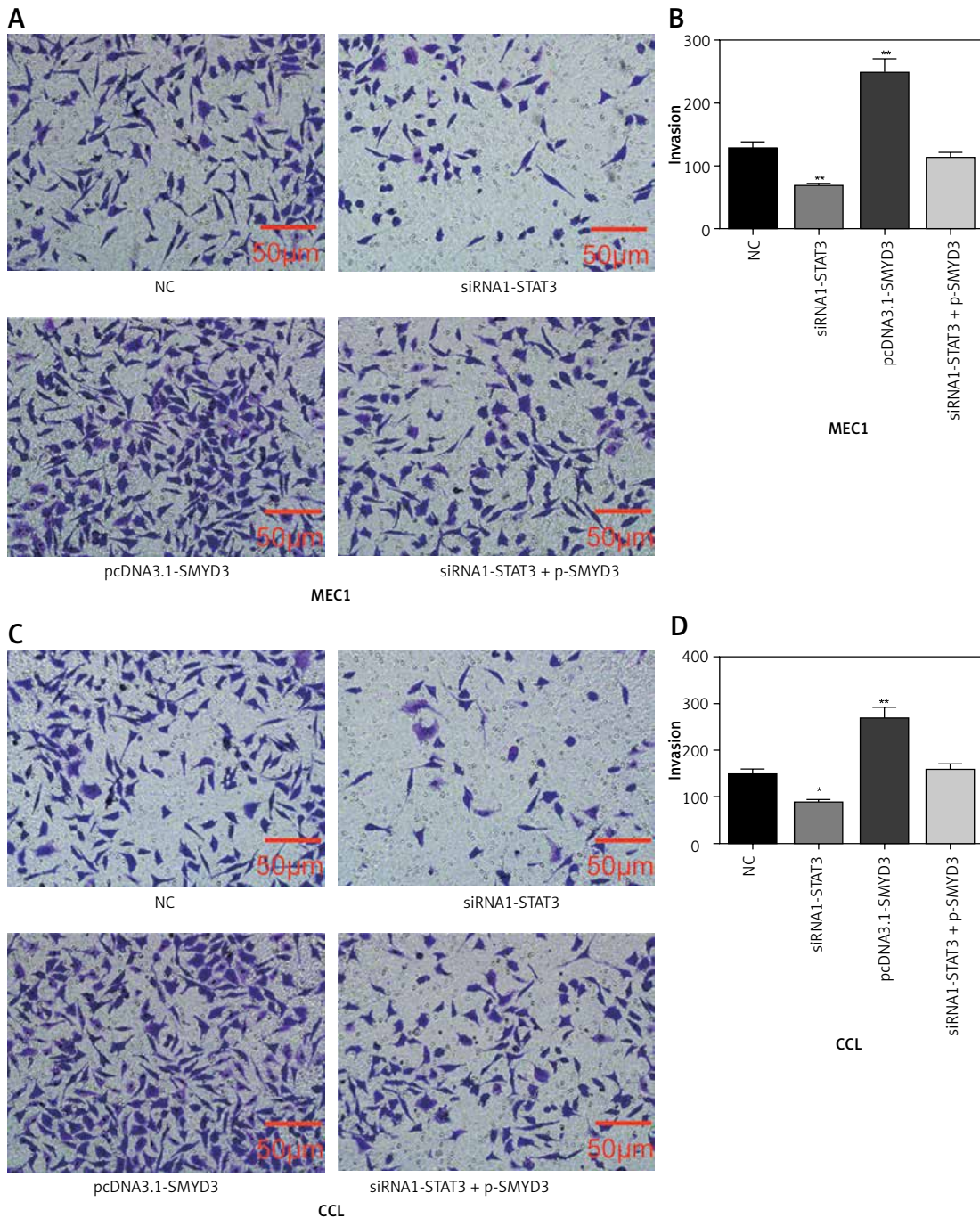


Figure 5. SMYD3 promoted invasion in MEC1 and CCL cancerous cells through increasing STAT3 expression. Cells were plated into multi-well transwell plates and divided into four groups to apply four different treatments: NC group, negative control, STAT3 knockdown group, indicating transfection with siRNA1-STAT3, SMYD3 overexpression group, indicating transfection with pcDNA3.1-SMYD3 vectors and combination group, indicating transfection with siRNA-STAT3 and pcDNA3.1-SMYD3. **A, B** – Cell invasion ability of MEC1 was investigated in different transfection groups. **C, D** – Cell invasion ability of CCL was investigated in different transfection groups

Data are means \pm SD. ** $P < 0.01$, compared with NC group.

ulated by the matrix metalloproteinases (MMPs). Not surprisingly, STAT3 has a crucial impact on this complex process. In a pancreatic cancer model, using siRNA to knock down STAT3 expression significantly reduced cell invasiveness and MMP-7 expression in nude mice [31]. Consistently, our data showed that the knockdown of STAT3 attenuated

MEC1 and CLL cell proliferative and invasion ability, verifying the tumor promotion role of STAT3.

A direct functional relationship between SMYD3 and cell proliferation and invasion in CLL has been found in this study. Many studies have revealed that Smdy3 protein was recruited together with trimethylated H3K4 histone tails to

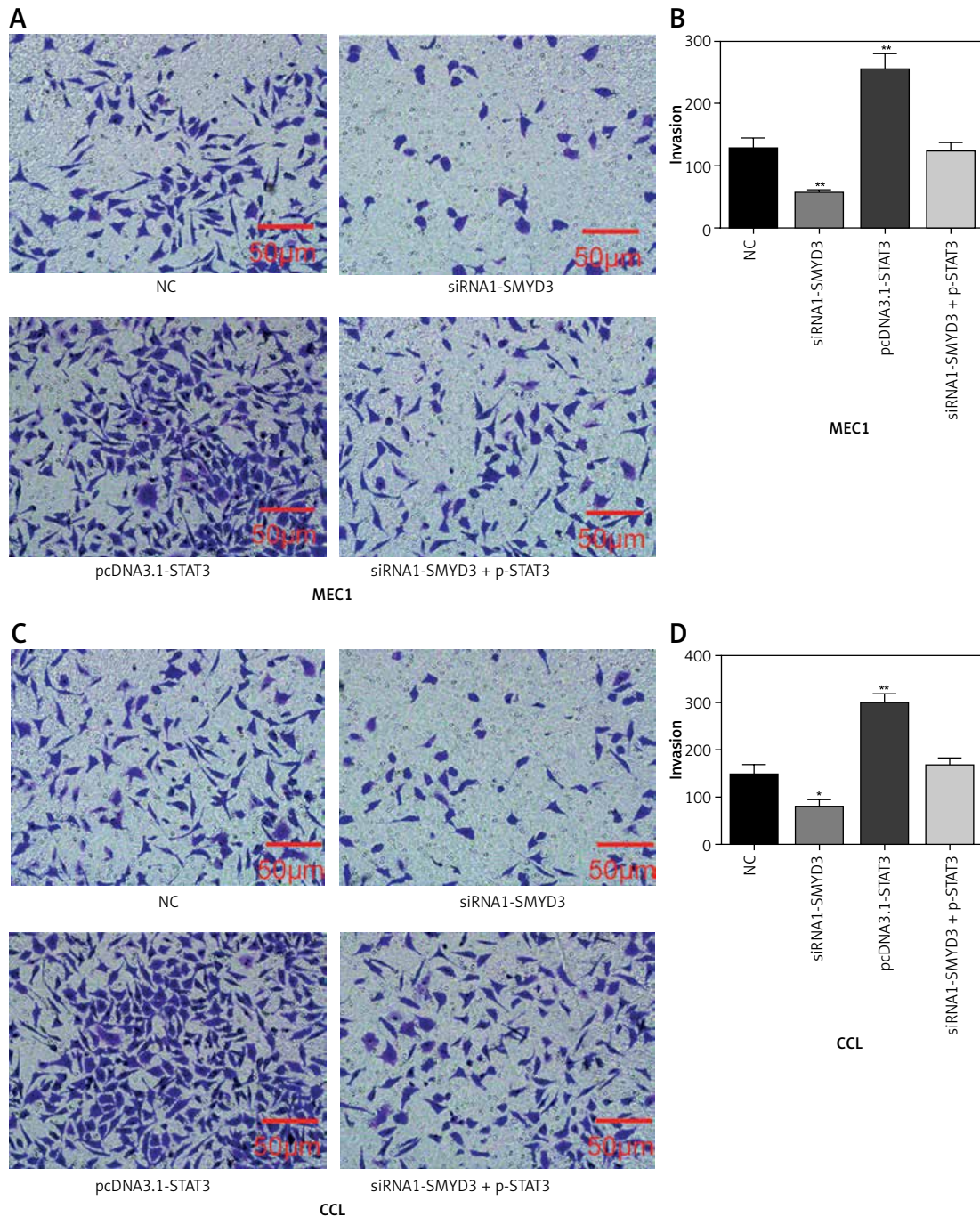


Figure 6. STAT3 promoted invasion in MEC1 and CCL cancerous cells through increasing SMYD3 expression. Cells were plated into multi-well transwell plates and divided into four groups to apply four different treatments: NC group, negative control, SMYD3 knockdown group, indicating transfection with siRNA1-SMYD3, STAT3 overexpression group, indicating transfection with pcDNA3.1-STAT3 vectors and combination group, indicating transfection with siRNA-SMYD3 and pcDNA3.1-STAT3. **A, B** – Cell invasion ability of MEC1 was investigated in different transfection groups. **C, D** – Cell invasion ability of CCL was investigated in different transfection groups

Data are means ± SD. ** $P < 0.01$, compared with NC group.

active gene regulatory regions and act as an important transcriptional potentiator. In hepatic cancer cells, Smyd3 regulated cancer-related nuclear processes, through activating oncogenes or potentiating transcription of cancer-promoting genes [19]. While some oncogenic transcription factors, such as Myc and stat3 were regulated by

Smyd3, Smyd3 inactivation inhibited cancer formation by attenuating cell proliferation in HCC. Interestingly, our data revealed that SMYD3 was elevated by STAT3 in CLL cancer cell lines MEC1 and CCL, which suggested an intimate relationship between these two oncogenic genes. When STAT3 mRNA expression was knocked down by

small interfering RNA transfection, cell proliferation was suppressed and invasion ability was restrained. In contrast, when SMYD3 was overexpressed by plasmid transfection, the proliferation and invasion ability were dramatically facilitated. Intriguingly, we found that SMYD3 overexpression can equilibrate the declination of STAT3. Cell function determination of proliferation and invasion showed consistent results. Thus, there may be an interaction between STAT3 and SMYD3 which needs further investigation.

This study was a superficial exploration of the relationship between STAT3 and SMYD3 and the results were limited. We did not investigate the role of STAT3 or SMYD3 in patients' prognosis due to the lack of follow-up data. Furthermore, we did not interpret the involved upstream or downstream elements in this pathway, and there may be some unknown intermediate targets. More experiments are required to elucidate their interaction. Also clinical trials are required to determine whether the STAT3-SMYD3 pathway can be a potential target for therapy.

In conclusion, we identified that STAT3 promoted chronic lymphocytic leukemia cell lines' proliferation and invasion ability by inducing oncogenic SMYD3 expression. We speculated that the induction of STAT3 to SMYD3 in CLL may lead to a poor prognosis in CLL cancer. Targeting STAT3-SMYD3 may be a potential strategy for CLL treatment.

Conflict of interest

The authors declare no conflict of interest.

References

- Dighiero G, Hamblin TJ. Chronic lymphocytic leukaemia. *Lancet* 2008; 371: 1017-29.
- Oliveira-Santos W, Rabello DA, Lucena-Araujo AR, et al. Residual expression of SMYD2 and SMYD3 is associated with the acquisition of complex karyotype in chronic lymphocytic leukemia. *Tumour Biol* 2016; 37: 9473-81.
- Moreno C, Montserrat E. New prognostic markers in chronic lymphocytic leukemia. *Blood Rev* 2008; 22: 211-9.
- Molica S. Infections in chronic lymphocytic leukemia: risk factors, and impact on survival, and treatment. *Leuk Lymphoma* 1994; 13: 203-14.
- Howlader N, Noone A, Krapcho M, et al. SEER Cancer Statistics Review 1975-2007 National Cancer Institute SEER Cancer Statistics Review 1975-2007, National Cancer Institute 2010.
- Lu K, Wang X. Therapeutic advancement of chronic lymphocytic leukemia. *J Hematol Oncol* 2012; 5: 55.
- Voorhies BN, Stephens DM. What is optimal front-line therapy for chronic lymphocytic leukemia in 2017? *Curr Treat Options Oncol* 2017; 18: 12.
- Chiorazzi N, Rai KR, Ferrarini M. Chronic lymphocytic leukemia. *N Engl J Med* 2005; 352: 804-15.
- Ten Hacken E, Burger JA. Microenvironment interactions and B-cell receptor signaling in chronic lymphocytic leukemia: implications for disease pathogenesis and treatment. *Biochim Biophys Acta* 2016; 1863: 401-13.
- Alvarez JV, Greulich H, Sellers WR, Meyerson M, Frank DA. Signal transducer and activator of transcription 3 is required for the oncogenic effects of non-small-cell lung cancer-associated mutations of the epidermal growth factor receptor. *Cancer Res* 2006; 66: 3162-8.
- Garcia R, Bowman TL, Niu G, et al. Constitutive activation of Stat3 by the Src and JAK tyrosine kinases participates in growth regulation of human breast carcinoma cells. *Oncogene* 2001; 20: 2499-513.
- Kusaba T, Nakayama T, Yamazumi K, et al. Activation of STAT3 is a marker of poor prognosis in human colorectal cancer. *Oncol Rep* 2006; 15: 1445-51.
- Antosz H, Wojciechowska K, Sajewicz J, et al. IL-6, IL-10, c-Jun and STAT3 expression in B-CLL. *Blood Cells Mol Dis* 2015; 54: 258-65.
- Chan KS, Sano S, Kiguchi K, et al. Disruption of Stat3 reveals a critical role in both the initiation and the promotion stages of epithelial carcinogenesis. *J Clin Invest* 2004; 114: 720-8.
- Chiarle R, Simmons WJ, Cai H, et al. Stat3 is required for ALK-mediated lymphomagenesis and provides a possible therapeutic target. *Nat Med* 2005; 11: 623-9.
- Hazan-Halevy I, Harris D, Liu Z, et al. STAT3 is constitutively phosphorylated on serine 727 residues, binds DNA, and activates transcription in CLL cells. *Blood* 2010; 115: 2852-63.
- Shaim H, Estrov Z, Harris D, et al. The CXCR4-STAT3-IL-10 pathway controls the immunoregulatory function of chronic lymphocytic leukemia and is modulated by lenalidomide. *Front Immunol* 2017; 8: 1773.
- Hamamoto R, Furukawa Y, Morita M, et al. SMYD3 encodes a histone methyltransferase involved in the proliferation of cancer cells. *Nat Cell Biol* 2004; 6: 731-40.
- Sarris ME, Moulos P, Haroniti A, Giakountis A, Talianidis I. Smyd3 is a transcriptional potentiator of multiple cancer-promoting genes and required for liver and colon cancer development. *Cancer Cell* 2016; 29: 354-66.
- Mazur PK, Reynoird N, Khatri P, et al. SMYD3 links lysine methylation of MAP3K2 to Ras-driven cancer. *Nature* 2014; 510: 283-7.
- Liu Y, Deng J, Luo X, et al. Overexpression of SMYD3 was associated with increased STAT3 activation in gastric cancer. *Med Oncol* 2015; 32: 404.
- Darnell JE. Validating Stat3 in cancer therapy. *Nat Med* 2005; 11: 595-6.
- Carpenter RL, Lo HW. STAT3 target genes relevant to human cancers. *Cancers (Basel)* 2014; 6: 897-925.
- Lee YK, Shanafelt TD, Bone ND, Strege AK, Jelinek DF, Kay NE. VEGF receptors on chronic lymphocytic leukemia (CLL) B cells interact with STAT 1 and 3: implication for apoptosis resistance. *Leukemia* 2005; 19: 513-23.
- Frank DA, Mahajan S, Ritz J. B lymphocytes from patients with chronic lymphocytic leukemia contain signal transducer and activator of transcription (STAT) 1 and STAT3 constitutively phosphorylated on serine residues. *J Clin Invest* 1997; 100: 3140-8.
- Doshi UA, Shaw J, Fox TE, Claxton DF, Loughran TP, Kester M. STAT3 mediates C6-ceramide-induced cell death in chronic lymphocytic leukemia. *Signal Transduct Target Ther* 2017; 2: 17051.
- Rozovski U, Harris DM, Li P, et al. Activation of the B-cell receptor successively activates NF-kappaB and STAT3 in chronic lymphocytic leukemia cells. *Int J Cancer* 2017; 141: 2076-81.

28. Rozovski U, Wu JY, Harris DM, et al. Stimulation of the B-cell receptor activates the JAK2/STAT3 signaling pathway in chronic lymphocytic leukemia cells. *Blood* 2014; 123: 3797-802.
29. Rozovski U, Harris DM, Li P, et al. At high levels, constitutively activated STAT3 induces apoptosis of chronic lymphocytic leukemia cells. *J Immunol* 2016; 196: 4400-9.
30. Kamran MZ, Patil P, Gude RP. Role of STAT3 in cancer metastasis and translational advances. *Biomed Res Int* 2013; 2013: 421821.
31. Li H, Huang C, Huang K, et al. STAT3 knockdown reduces pancreatic cancer cell invasiveness and matrix metalloproteinase-7 expression in nude mice. *PLoS One* 2011; 6: e25941.